

Start of Season Report

Report Date: Thu 07-Feb-2019

Headlines

| | S19 Start | vs. S18 Start | vs. S18 End |
|---|------------|---------------|-------------|
| Total Air Transport Movements (Passenger & Freight) | 81,994 | ▲ 2.7% | ▲ 3.7% |
| Total Passenger Air Transport Movements | 78,766 | ▲ 2.8% | ▲ 3.9% |
| Total Passenger Air Transport Movement Seats | 11,434,064 | ▲ 3.9% | ▲ 4.7% |
| Average Seats per Passenger Air Transport Movement | 145 | ▲ 1.1% | ▲ 0.8% |
| Percentage of allocated slots cleared as requested (OK) | 98.46% | | |

Contents

| Page | Content |
|------|---|
| 2 | ATM Allocation by Operator (Full season and Peak Week Comparison) |
| 3 | Significant Route Changes |
| 4 | Full Season - ATM Analysis |
| 5 | Full Season - PATM Seats Analysis |
| 6 | Full Season - Terminal Analysis |
| 7 | Full Season - Aircraft Size Analysis |
| 8 | Full Season - Seasonality |
| 9 | Peak Week - Hourly Runway Allocation |
| 10 | Peak Week - Hourly Runway Allocation Comparison (S19 Start vs. S18 End) |
| 11 | Peak Week Histogram - Departure Passengers (T60/15) - All Terminals - All Operators |
| 12 | Peak Week Histogram - Departure Passengers (T60/15) - All Terminals - All Operators |
| 13 | Peak Week Histogram - Arrival Passengers (T60/15) - 1D - All Operators |
| 14 | Peak Week Histogram - Arrival Passengers (T60/15) - 1D - All Operators |
| 15 | Peak Week Histogram - Arrival Passengers (T60/15) - 1I - All Operators |
| 16 | Peak Week Histogram - Arrival Passengers (T60/15) - 1I - All Operators |
| 17 | Glossary |

S18 scheduling season runs from Sun 25-Mar-2018 to Sat 27-Oct-2018 (217 days).

S19 scheduling season runs from Sun 31-Mar-2019 to Sat 26-Oct-2019 (210 days).

S18 full season data is adjusted by a factor of 0.96774 in order to directly compare against S19 full season data.

Disclaimer

No warranty whether expressed or implied as to the completeness, accuracy, fitness for purpose, or satisfactory quality is given by ACL regarding the information in this report, which is provided by third parties. Accordingly, ACL excludes all liability with regard to such data.

The contents of this report may not be reproduced without the written consent of ACL.

Air Transport Movement Allocation by Operator

Comparison between S18 End vs. S19 Start



| Operator | FULL SEASON ALLOCATION | | | | | | | PEAK WEEK ALLOCATION | | | | | | | | |
|--------------------------|------------------------|---------------|--------------|----------|-------------------|-------------------|----------------|----------------------|--------------|--------------|------------|----------|----------------|----------------|---------------|----------|
| | S18 ATMs | S19 ATMs | +/- change | S19 Rank | S18 Seats | S19 Seats | +/- change | S19 Rank | S18 ATMs | S19 ATMs | +/- change | S19 Rank | S18 Seats | S19 Seats | +/- change | S19 Rank |
| Aegean Airlines | 77 | 116 | 39 | 37 | 13,523 | 20,184 | 6,661 | 32 | 4 | 4 | 0 | 35 | 696 | 696 | 0 | 33 |
| Aer Lingus | 3,459 | 3,534 | 75 | 7 | 247,223 | 254,448 | 7,225 | 9 | 118 | 120 | 2 | 7 | 8,436 | 8,640 | 204 | 9 |
| Air Canada | 120 | 132 | 12 | 34 | 33,840 | 37,224 | 3,384 | 28 | 8 | 8 | 0 | 31 | 2,256 | 2,256 | 0 | 25 |
| Air France | 1,195 | 836 | -359 | 15 | 162,437 | 109,516 | -52,921 | 19 | 42 | 28 | -14 | 17 | 5,694 | 3,668 | -2,026 | 20 |
| AlbaStar | 9 | 1 | -8 | 43 | 1,481 | 170 | -1,311 | 39 | 3 | 1 | -2 | 41 | 510 | 170 | -340 | 37 |
| Alitalia | 2 | 26 | 24 | 40 | 279 | 4,680 | 4,401 | 36 | - | 2 | 2 | 39 | - | 360 | 360 | 35 |
| American Airlines | 412 | 414 | 2 | 24 | 72,557 | 72,864 | 307 | 22 | 14 | 14 | 0 | 24 | 2,464 | 2,464 | 0 | 22 |
| Atlantic Airways | 124 | 120 | -4 | 35 | 18,000 | 18,420 | 420 | 33 | 6 | 4 | -2 | 35 | 864 | 636 | -228 | 34 |
| Austrian Airlines | 3 | - | -3 | 47 | 418 | - | -418 | 43 | - | - | 0 | 42 | - | - | 0 | 38 |
| BA Cityflyer | - | 3,225 | 3,225 | 8 | - | 300,364 | 300,364 | 8 | - | 98 | 98 | 8 | - | 9,164 | 9,164 | 8 |
| Balkan Holidays Air Ltd | 81 | 78 | -3 | 38 | 14,197 | 14,040 | -157 | 34 | 6 | 4 | -2 | 35 | 1,080 | 720 | -360 | 32 |
| British Airways | 8,687 | 5,834 | -2,853 | 5 | 1,245,822 | 964,001 | -281,821 | 4 | 275 | 190 | -85 | 5 | 39,856 | 31,437 | -8,419 | 4 |
| Brussels Airlines | 762 | 780 | 18 | 16 | 105,015 | 109,980 | 4,965 | 18 | 26 | 26 | 0 | 20 | 3,580 | 3,666 | 86 | 21 |
| Danish Air Transport | 15 | 10 | -5 | 41 | 1,434 | 820 | -614 | 37 | - | - | 0 | 42 | - | - | 0 | 38 |
| Delta Air Lines | 378 | 626 | 248 | 21 | 63,569 | 105,168 | 41,599 | 21 | 14 | 28 | 14 | 17 | 2,352 | 4,704 | 2,352 | 18 |
| EasyJet | 16,238 | 14,700 | -1,538 | 1 | 2,911,274 | 2,645,160 | -266,114 | 1 | 540 | 486 | -54 | 1 | 96,846 | 87,486 | -9,360 | 1 |
| EasyJet Europe GmbH | - | 1,674 | 1,674 | 10 | - | 312,972 | 312,972 | 6 | - | 56 | 56 | 10 | - | 10,434 | 10,434 | 7 |
| Edelweiss Air | 208 | 244 | 36 | 29 | 37,527 | 43,290 | 5,763 | 25 | 6 | 10 | 4 | 28 | 1,080 | 1,730 | 650 | 28 |
| Emirates | 52 | 412 | 360 | 25 | 18,499 | 145,848 | 127,349 | 15 | - | 14 | 14 | 24 | - | 4,956 | 4,956 | 17 |
| Enter Air | 7 | - | -7 | 47 | 1,280 | - | -1,280 | 43 | - | - | 0 | 42 | - | - | 0 | 38 |
| Ethiad Airways | 263 | - | -263 | 47 | 68,965 | - | -68,965 | 43 | 10 | - | -10 | 42 | 2,620 | - | -2,620 | 38 |
| Eurowings | 882 | 752 | -130 | 17 | 144,180 | 135,360 | -8,820 | 16 | 30 | 30 | 0 | 15 | 4,860 | 5,400 | 540 | 16 |
| Finnair | 417 | 402 | -15 | 26 | 48,405 | 40,200 | -8,205 | 27 | 18 | 18 | 0 | 23 | 2,322 | 1,800 | -522 | 27 |
| FLEXFLIGHT APS | - | 60 | 60 | 39 | - | 6,000 | 6,000 | 35 | - | 2 | 2 | 39 | - | 200 | 200 | 36 |
| Flybe | 12,798 | 13,688 | 890 | 2 | 1,014,397 | 1,077,164 | 62,767 | 3 | 436 | 462 | 26 | 2 | 34,368 | 36,356 | 1,988 | 3 |
| Germania | 15 | - | -15 | 47 | 2,295 | - | -2,295 | 43 | - | - | 0 | 42 | - | - | 0 | 38 |
| Hainan Airlines | 153 | 240 | 87 | 30 | 35,932 | 70,080 | 34,148 | 23 | 8 | 8 | 0 | 31 | 2,336 | 2,336 | 0 | 23 |
| Helvetic Airways | 2 | - | -2 | 47 | 194 | - | -194 | 43 | - | - | 0 | 42 | - | - | 0 | 38 |
| Iberia Express | 192 | 196 | 4 | 32 | 33,079 | 35,280 | 2,201 | 30 | 8 | 12 | 4 | 27 | 1,386 | 2,160 | 774 | 26 |
| Israir | 23 | - | -23 | 47 | 4,390 | - | -4,390 | 43 | 2 | - | -2 | 42 | 378 | - | -378 | 38 |
| Jet2.com | 4,201 | 4,200 | -1 | 6 | 731,362 | 793,800 | 62,438 | 5 | 165 | 164 | -1 | 6 | 28,746 | 30,996 | 2,250 | 5 |
| KLM Royal Dutch Airlines | 2,198 | 1,796 | -402 | 9 | 319,192 | 308,656 | -10,536 | 7 | 84 | 70 | -14 | 9 | 11,740 | 11,224 | -516 | 6 |
| Loganair | 5,033 | 5,874 | 841 | 4 | 152,754 | 185,708 | 32,954 | 11 | 165 | 201 | 36 | 4 | 4,926 | 6,380 | 1,454 | 11 |
| Lufthansa | 838 | 1,018 | 180 | 12 | 157,415 | 186,990 | 29,575 | 10 | 28 | 34 | 6 | 13 | 5,184 | 6,246 | 1,062 | 12 |
| Maleth-Aero | 5 | - | -5 | 47 | 523 | - | -523 | 43 | - | - | 0 | 42 | - | - | 0 | 38 |
| Norwegian | 1,623 | 964 | -659 | 14 | 304,154 | 179,304 | -124,850 | 12 | 54 | 32 | -22 | 14 | 10,128 | 5,952 | -4,176 | 13 |
| Qatar Airways | 420 | 548 | 128 | 22 | 113,501 | 155,084 | 41,583 | 14 | 14 | 20 | 6 | 22 | 3,962 | 5,660 | 1,698 | 14 |
| Ryanair | 11,676 | 13,332 | 1,656 | 3 | 2,206,727 | 2,519,748 | 313,021 | 2 | 391 | 446 | 55 | 3 | 73,899 | 84,294 | 10,395 | 2 |
| SAS Scandinavian | 787 | 713 | -74 | 18 | 111,914 | 106,929 | -4,985 | 20 | 36 | 30 | -6 | 15 | 4,748 | 3,852 | -896 | 19 |
| Thomas Cook (UK) | 50 | - | -50 | 47 | 11,071 | - | -11,071 | 43 | 2 | - | -2 | 42 | 440 | - | -440 | 38 |
| Titan Airways | 10 | - | -10 | 47 | 1,410 | - | -1,410 | 43 | 2 | - | -2 | 42 | 162 | - | -162 | 38 |
| Transavia France | 209 | 192 | -17 | 33 | 39,472 | 36,288 | -3,184 | 29 | 8 | 4 | -4 | 35 | 1,512 | 756 | -756 | 31 |
| TUI Airways | 742 | 686 | -56 | 20 | 142,036 | 131,430 | -10,606 | 17 | 32 | 28 | -4 | 17 | 6,492 | 5,514 | -978 | 15 |
| Turkish Airlines | 420 | 420 | 0 | 23 | 68,938 | 69,300 | 362 | 24 | 14 | 14 | 0 | 24 | 2,290 | 2,310 | 20 | 24 |
| United Airlines | 1,012 | 1,006 | -6 | 13 | 170,908 | 170,014 | -894 | 13 | 42 | 42 | 0 | 12 | 7,098 | 7,098 | 0 | 10 |
| VLM Airlines | 3 | - | -3 | 47 | 145 | - | -145 | 43 | - | - | 0 | 42 | - | - | 0 | 38 |
| Vueling | 244 | 240 | -4 | 30 | 43,897 | 43,200 | -697 | 26 | 8 | 8 | 0 | 31 | 1,440 | 1,440 | 0 | 29 |
| West Atlantic Cargo | 1,455 | 1,466 | 11 | 11 | - | - | 0 | 43 | 50 | 50 | 0 | 11 | - | - | 0 | 38 |
| WOW Air | 201 | 118 | -83 | 36 | 40,258 | 23,600 | -16,658 | 31 | 6 | 6 | 0 | 34 | 1,200 | 1,200 | 0 | 30 |
| TOTAL | 79,064 | 81,994 | 2,930 | | 10,920,810 | 11,434,064 | 513,254 | | 2,722 | 2,818 | 96 | | 378,434 | 394,361 | 15,927 | |

Operators with 0 'ATMs' in both S18 End & S19 Start schedules are included in the table due to appearing in the S18 Start schedule (either with/without allocated slots).

Significant Route Changes

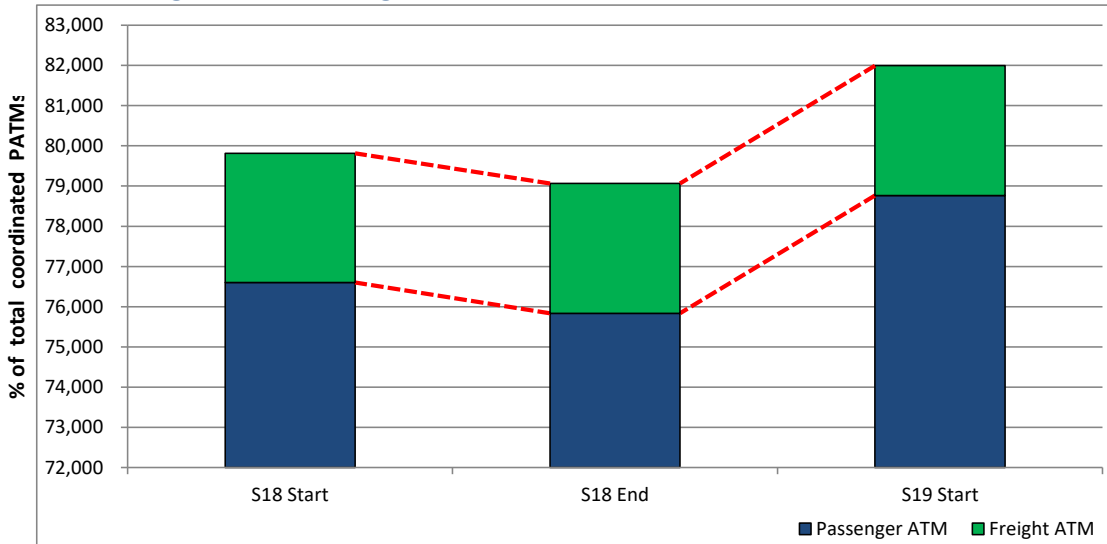


| Operator | Category | Description of change from S18 schedule to S19 schedule |
|--------------------------|------------------|---|
| Aegean Airlines | CHANGE | Increase Athens service. |
| Air France | CHANGE | Decrease Paris Ch. De Gaulle service. |
| Alitalia | NEW | Milan Linate & Milan Malpensa services. |
| American Airlines | NEW | Philadelphia service. |
| American Airlines | CANCELLED | New York JFK service. |
| Delta Air Lines | NEW | Boston service. |
| EasyJet | CHANGE | Decrease London Gatwick, London Luton, London Stansted & Milan Malpensa services. |
| Emirates | CHANGE | Increase Dubai service. |
| Etihad Airways | CANCELLED | Abu Dhabi service. |
| Eurowings | CHANGE | Decrease Munich service. |
| Finnair | CHANGE | Decrease Helsinki service. |
| FLEXFLIGHT APS | NEW | Aalborg service. |
| Flybe | CHANGE | Increase Cardiff, Exeter & London Heathrow services. |
| Flybe | CANCELLED | Jersey service. |
| Hainan Airlines | CHANGE | Increase Beijing service. |
| Israir | CANCELLED | Tel Aviv service. |
| Jet2.com | NEW | Bodrum, Bourgas & Kerkyra I. Kapodistrias services. |
| Jet2.com | CHANGE | Decrease Budapest, Almeria & Pula services |
| Jet2.com | CHANGE | Increase Lanzarote, Antalya & Dalaman services. |
| Jet2.com | CANCELLED | Murcia & Vienna services. |
| KLM Royal Dutch Airlines | CHANGE | Decrease Amsterdam service. |
| Loganair | NEW | Islay Glenegedale, Guernsey & Stavanger Sola services. |
| Loganair | CHANGE | Decrease Shetland Islands Sumburgh service. |
| Loganair | CHANGE | Increase Bergen, Isle of Man, & Norwich services. |
| Lufthansa | NEW | Munich service. |
| Norwegian | CANCELLED | Barcelona, Providence USA, Newburgh Stewart USA & Tenerife services. |
| Qatar Airways | CHANGE | Increase Doha service. |
| Ryanair | NEW | Billund, Londonderry, Lisbon, Luxembourg, Stockholm, Riga, Sofia, Sevilla, Tallinn, Berlin & Memmingen-Allgau services. |
| Ryanair | CHANGE | Decrease London Stansted service. |
| Ryanair | CHANGE | Increase Kerkyra I. Kapodistrias, Nantes, Palma Mallorca & Modlin services. |
| Ryanair | CANCELLED | Vigo, Szczecin Goleniow, Poitiers Biard, & Frankfurt services. |
| SAS Scandinavian | CHANGE | Decrease Stockholm & Copenhagen services. |
| SAS Scandinavian | CHANGE | Increase Oslo service. |
| Thomas Cook (UK) | CANCELLED | Antalya service. |
| TUI Airways | CANCELLED | Pula service. |
| WOW Air | CHANGE | Decrease Keflavik service. |

Full Season - ATM Analysis

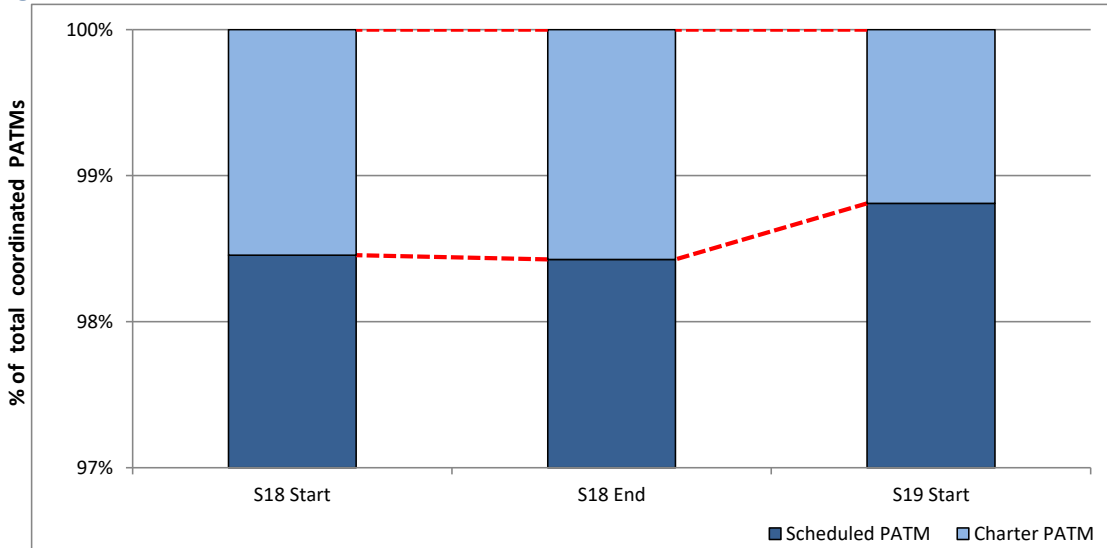


Total ATMs: Passenger ATMs vs. Freight ATMs



Schedule Snapshot

Passenger ATMs: Scheduled vs. Charter

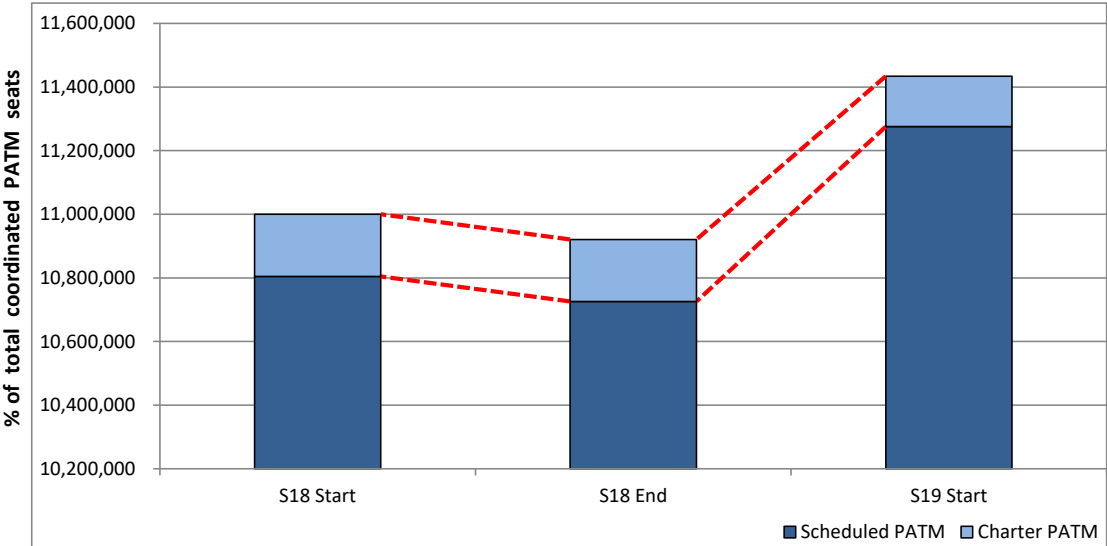


Schedule Snapshot

Full Season - PATM Seats Analysis

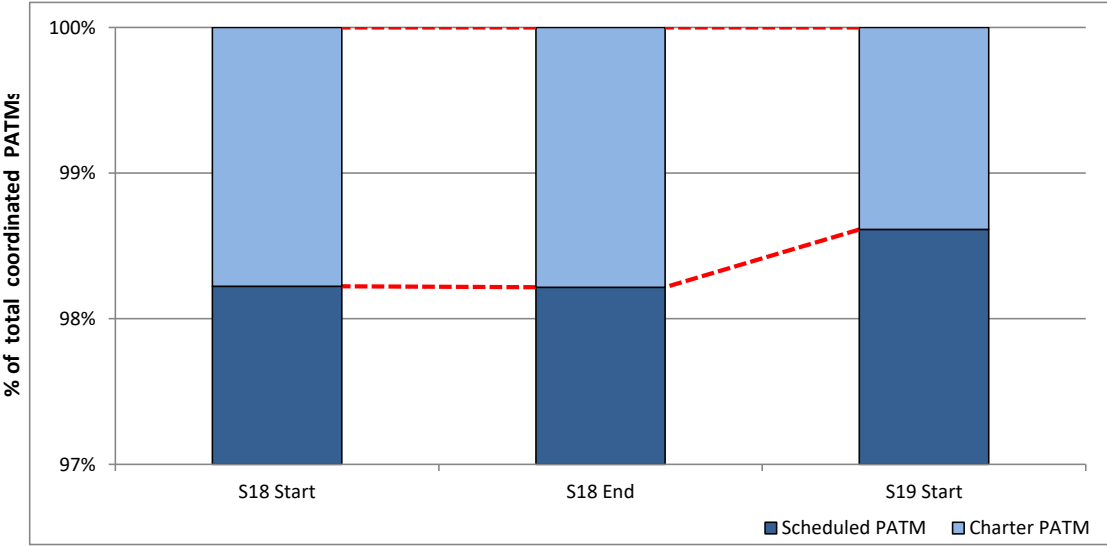


Total Passenger ATM seats: Scheduled vs. Charter



Schedule Snapshot

Passenger ATM seats: Scheduled vs. Charter

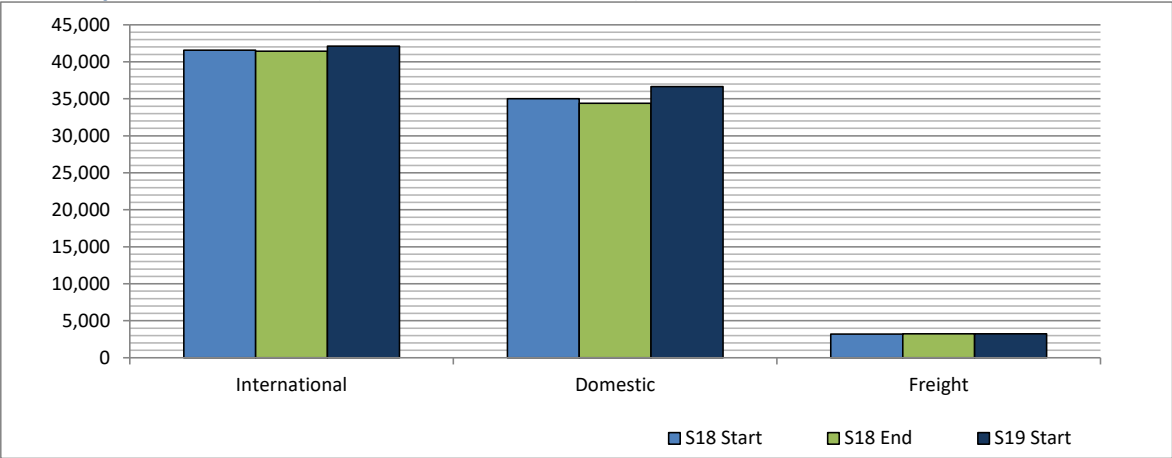


Schedule Snapshot

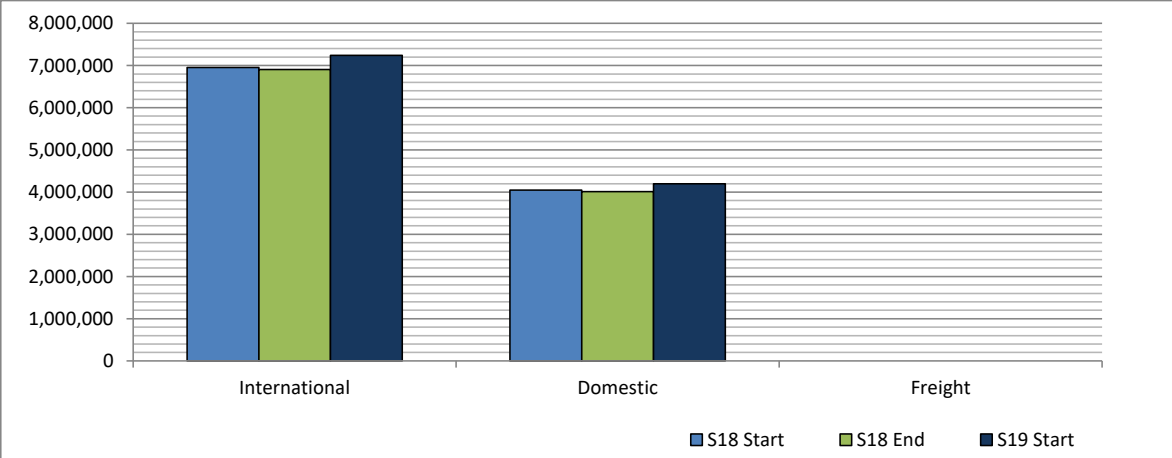
Full Season - Terminal Analysis



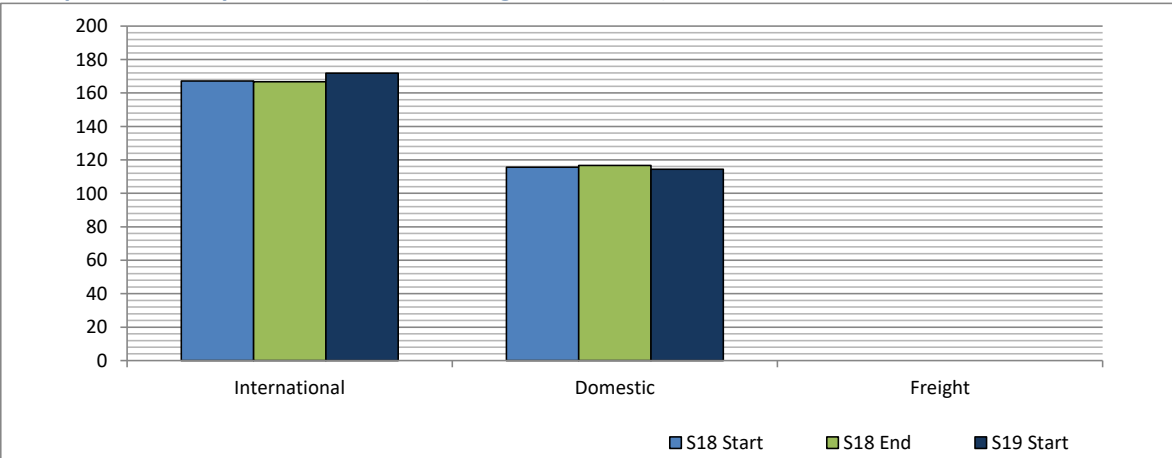
Air Transport Movements (total allocated for season)



Air Transport Movement Seats (total allocated for season)



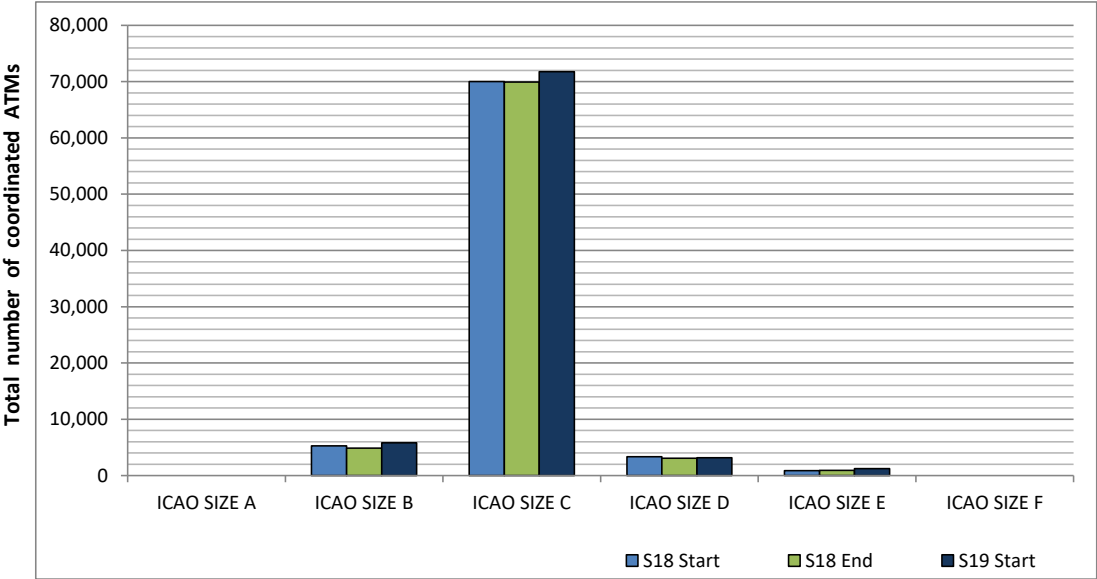
Seats per Air Transport Movement (average for season)



Full Season - Aircraft Size Analysis

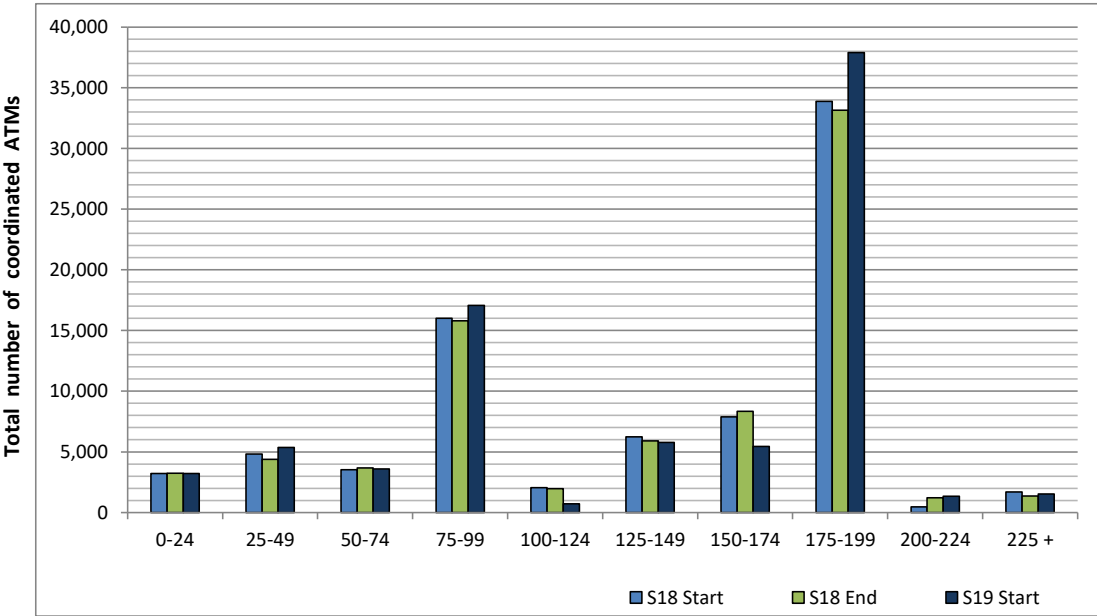


ICAO size designation



Note: See Glossary for definitions of ICAO SIZE groupings

Air Transport Movement seat distribution

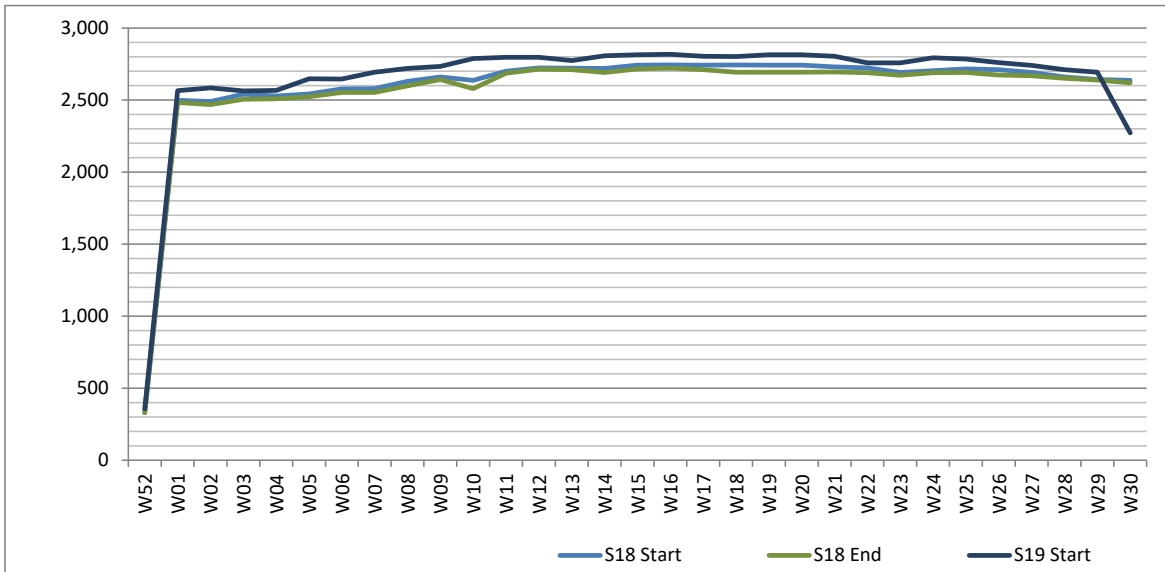


Note: FREIGHT-ONLY services with 0 seats are included in the first seat band '0-24'

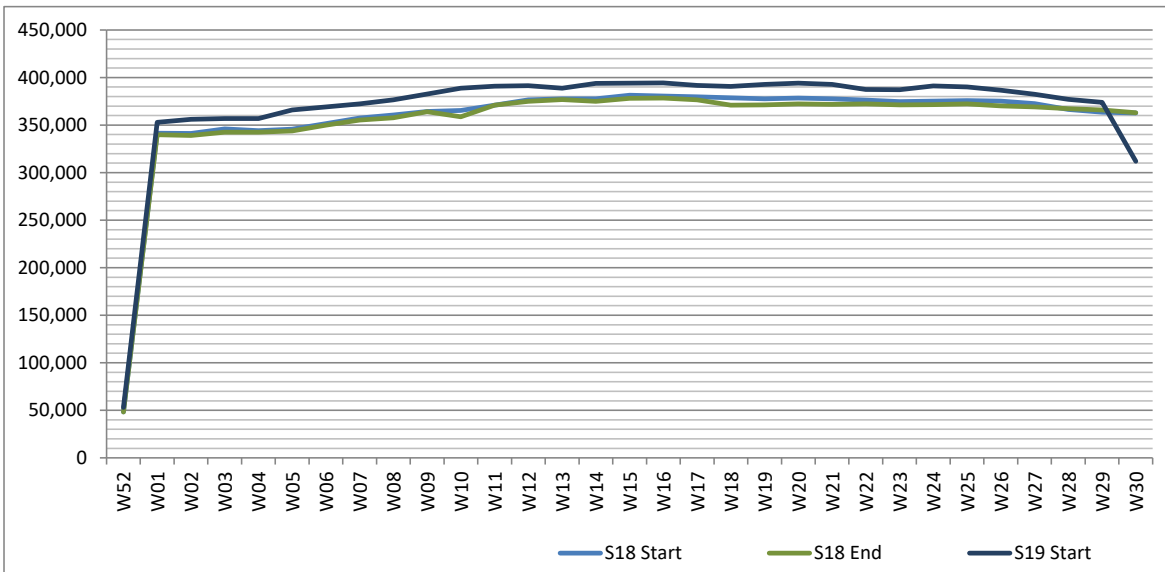
Full Season - Seasonality



Air Transport Movements by week of season



Air Transport Movement Seats by week of season



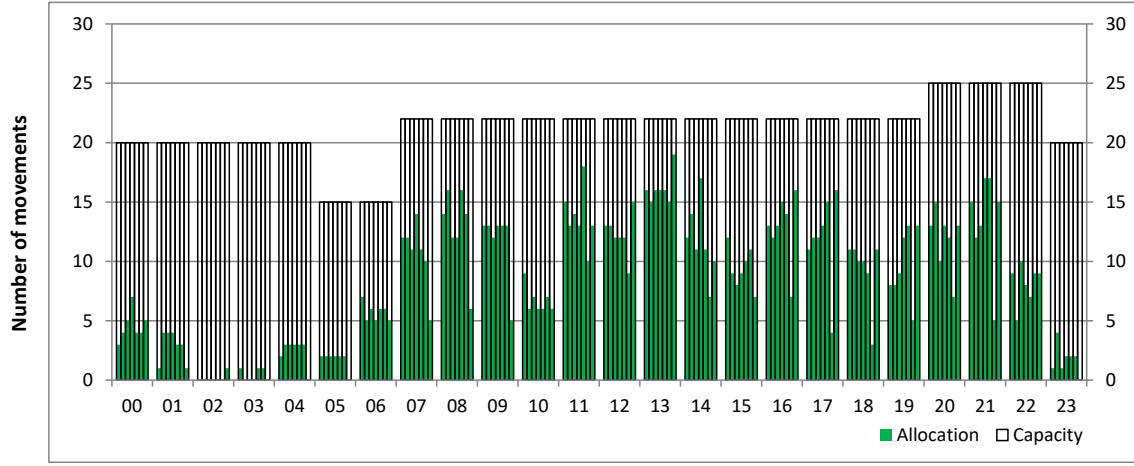
Peak Week - Hourly Runway Allocation

Schedule: S19 Start



Hourly Arrival Allocation

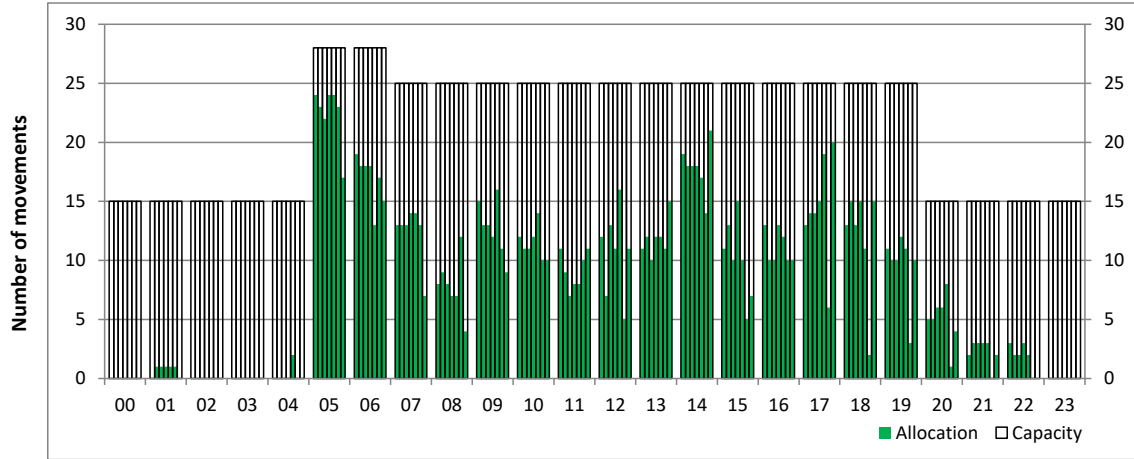
Time: UTC



Hour of day (24 hour format)

Hourly Departure Allocation

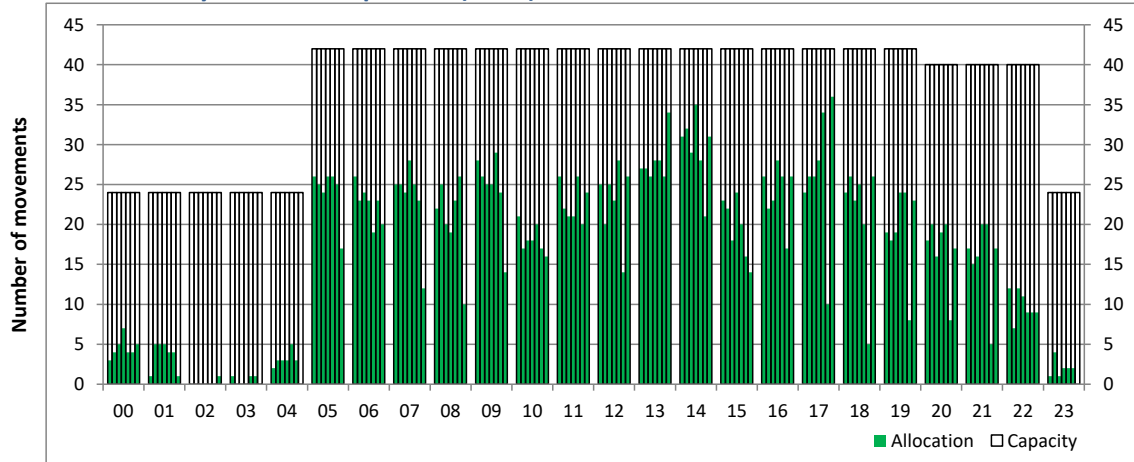
Time: UTC



Hour of day (24 hour format)

Combined Hourly Arrival & Departure (Total) Allocation

Time: UTC



Hour of day (24 hour format)

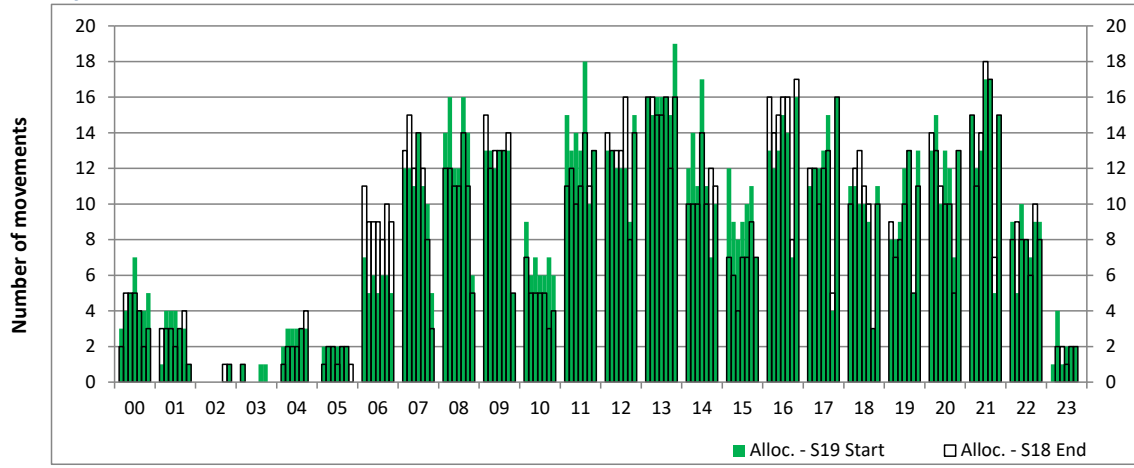
Peak Week - Runway Allocation Comparison

Comparison of S19 Start vs. S18 End



Hourly Arrival Allocation

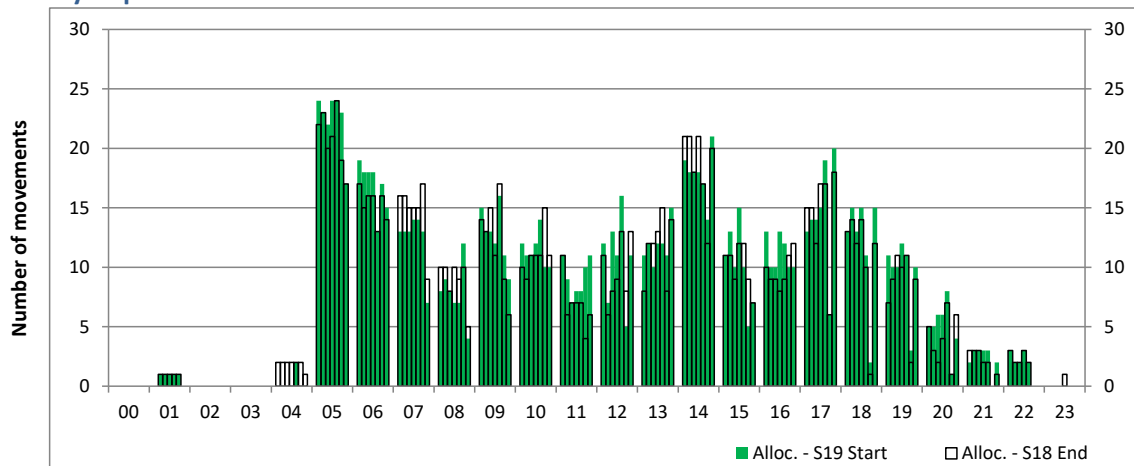
Time: UTC



Hour of day (24 hour format)

Hourly Departure Allocation

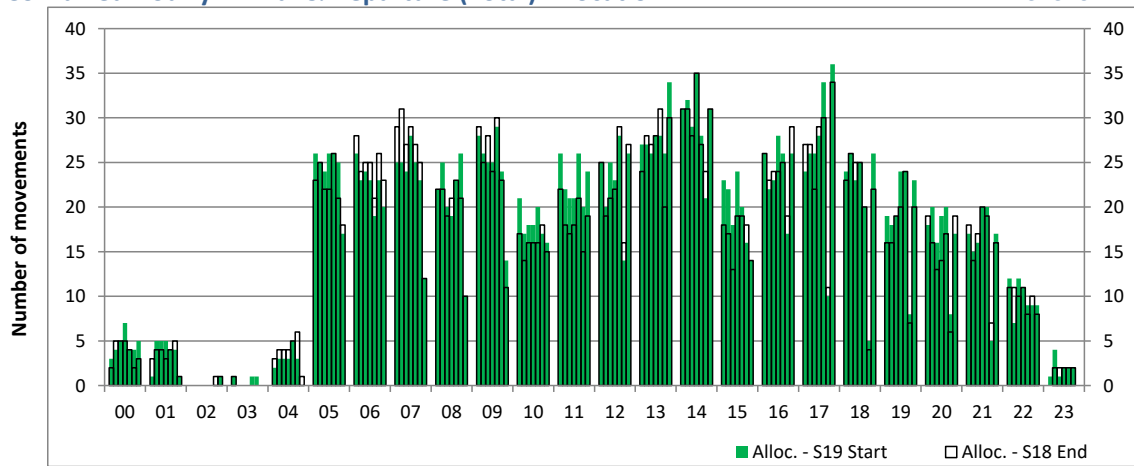
Time: UTC



Hour of day (24 hour format)

Combined Hourly Arrival & Departure (Total) Allocation

Time: UTC



Hour of day (24 hour format)

Peak Week - Passengers Histogram

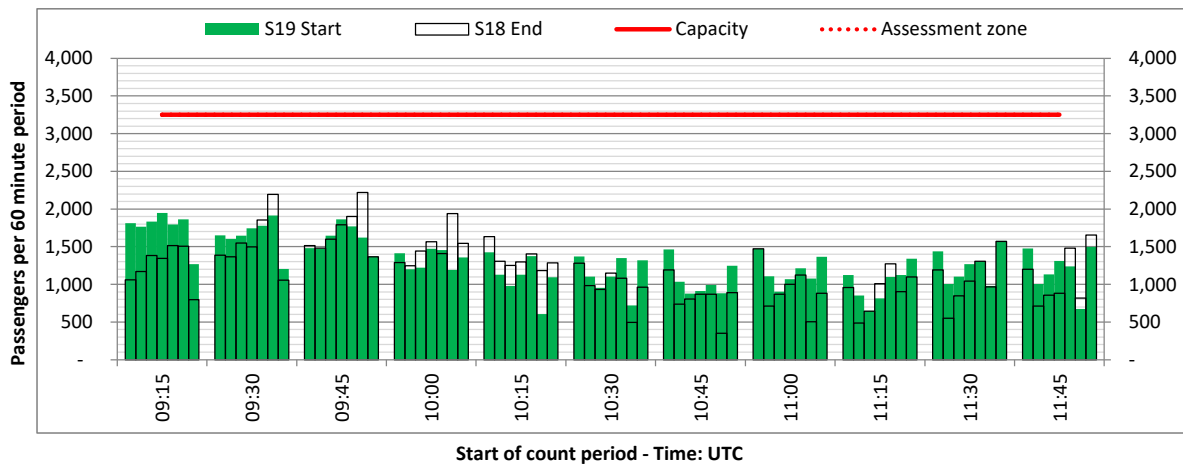
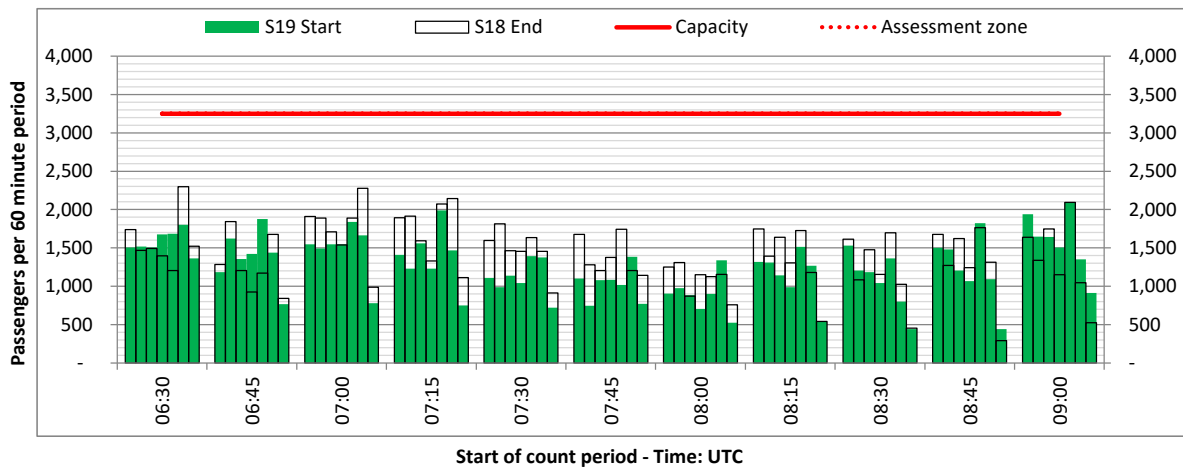
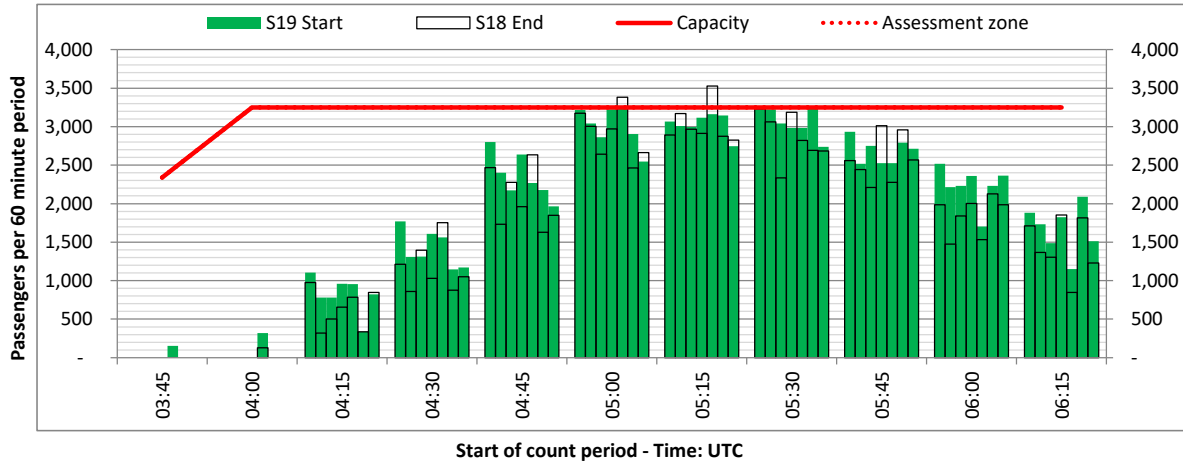
DEPARTURE - 60 minute count rolling every 15 mins (T60/15)



Terminals: All Terminals

Operators: All Operators

Days: 1234567



Peak Week - Passengers Histogram

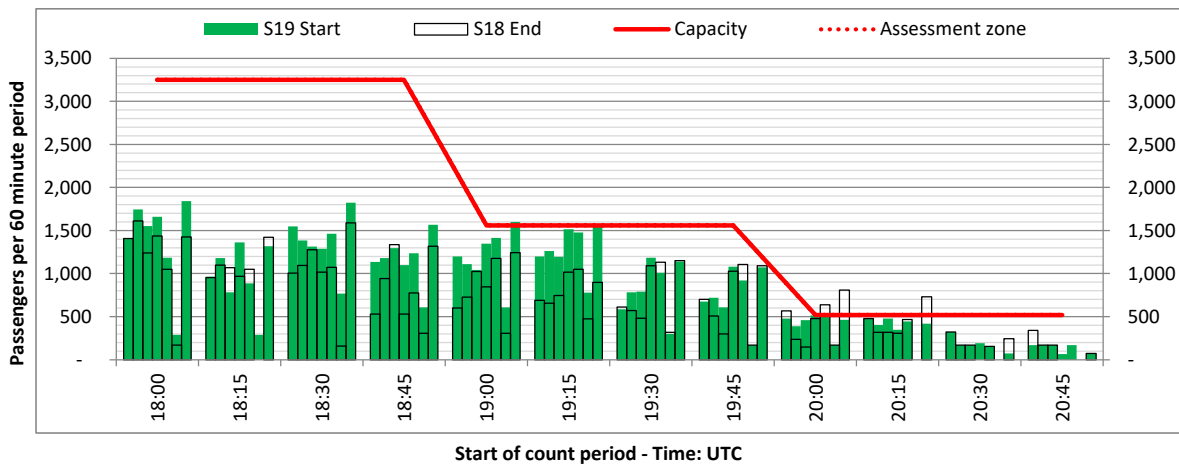
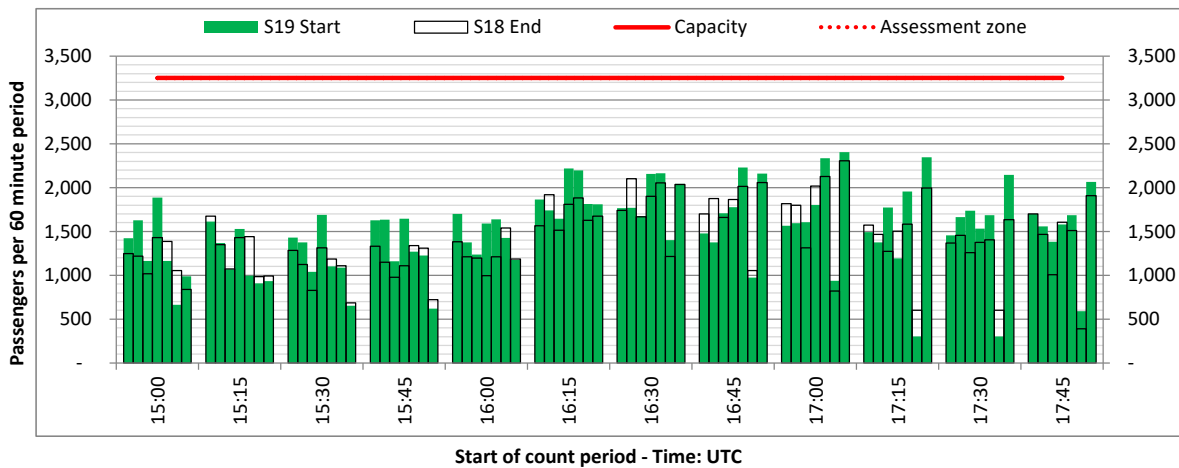
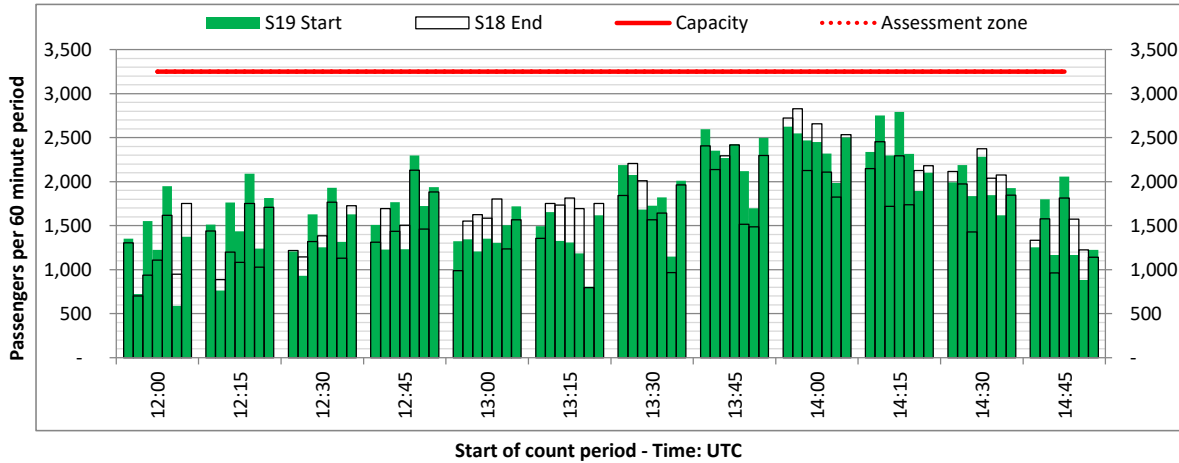
DEPARTURE - 60 minute count rolling every 15 mins (T60/15)



Terminals: All Terminals

Operators: All Operators

Days: 1234567



Peak Week - Passengers Histogram

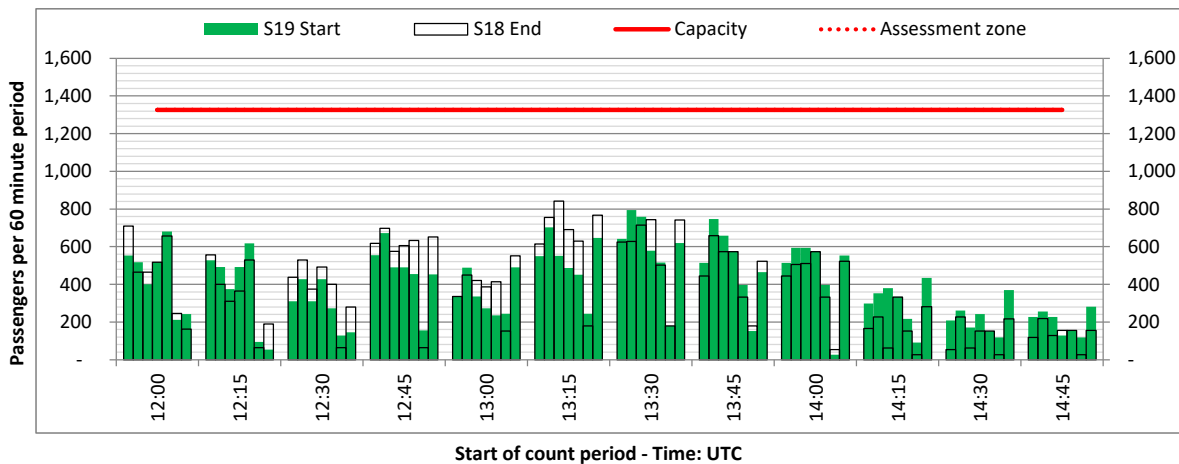
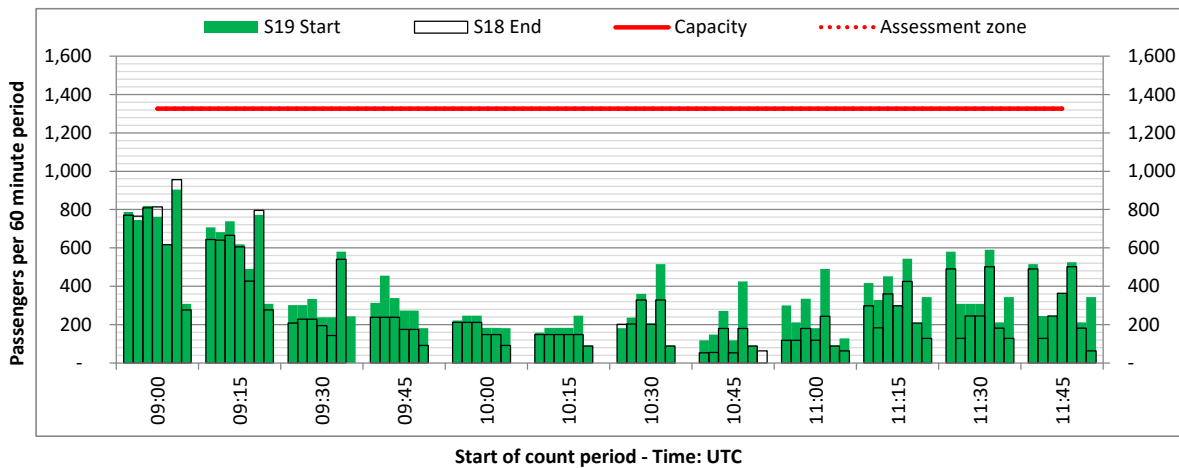
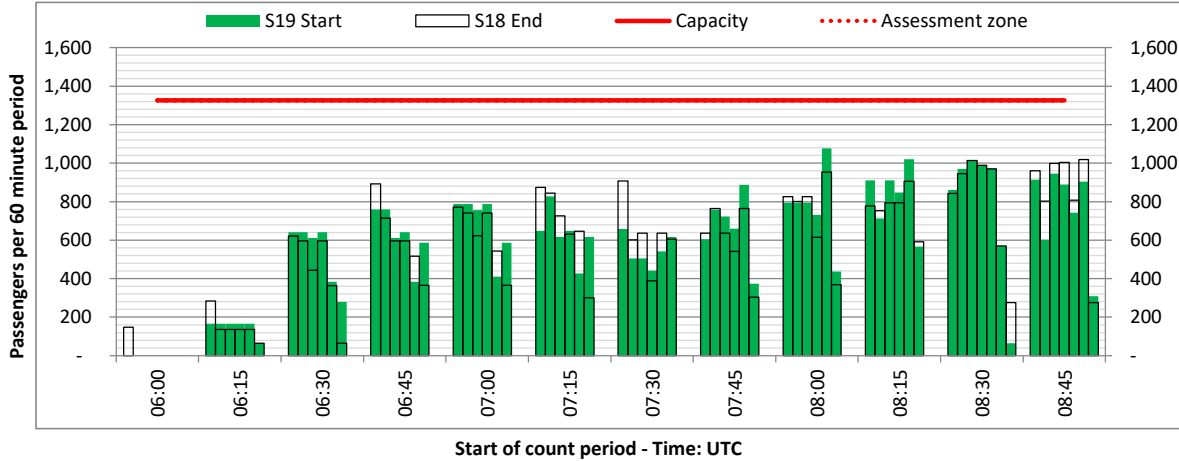
ARRIVAL - 60 minute count rolling every 15 mins (T60/15)



Terminals: 1D

Operators: All Operators

Days: 1234567



Peak Week - Passengers Histogram

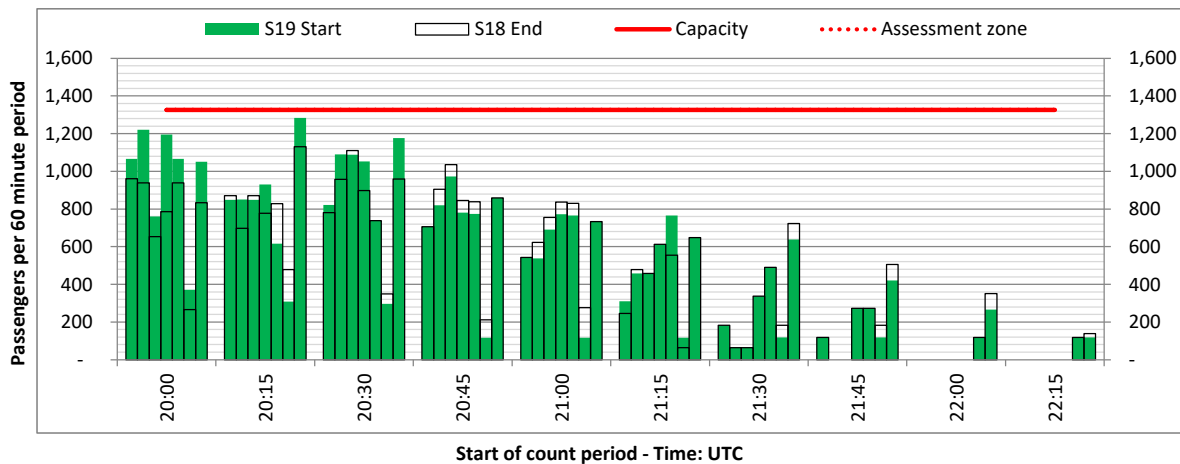
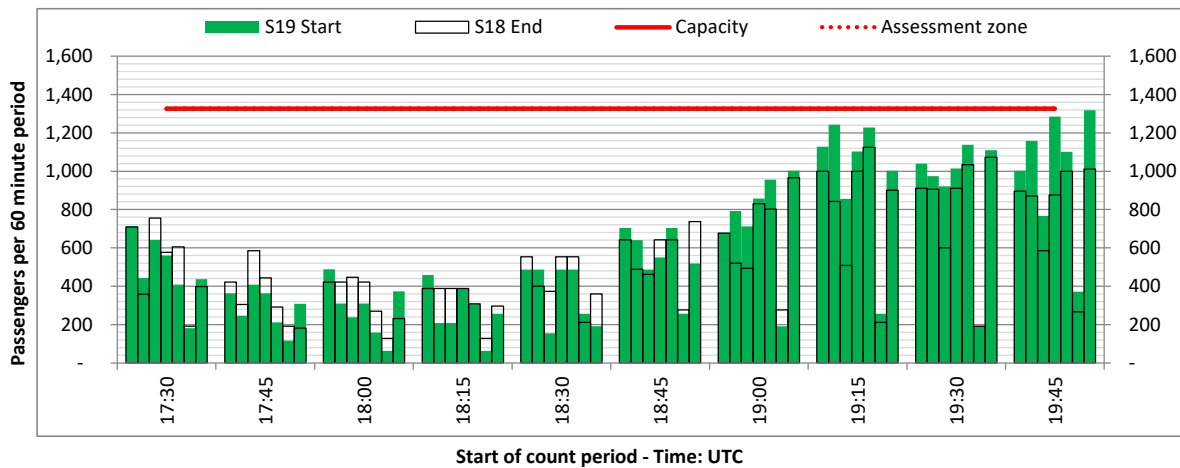
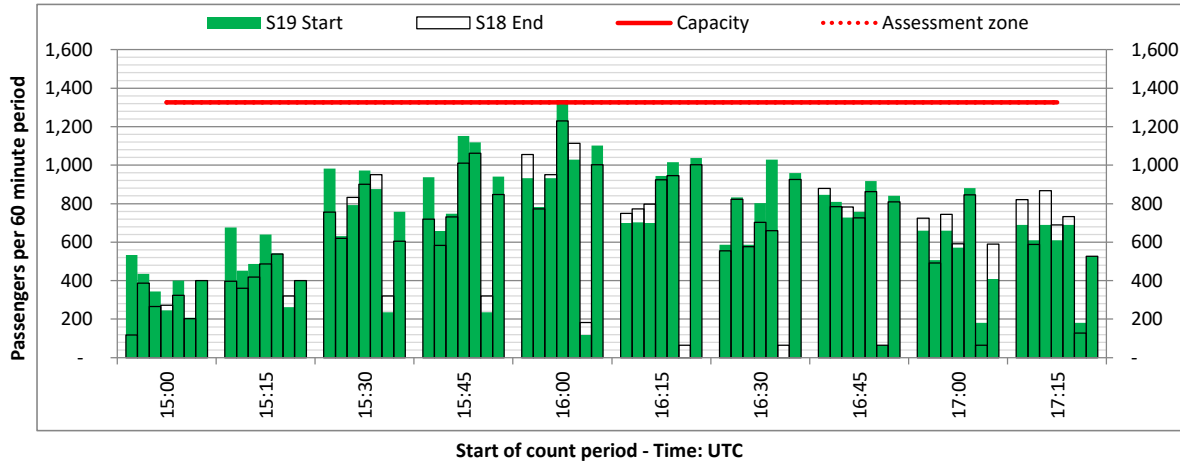
ARRIVAL - 60 minute count rolling every 15 mins (T60/15)



Terminals: 1D

Operators: All Operators

Days: 1234567



Peak Week - Passengers Histogram

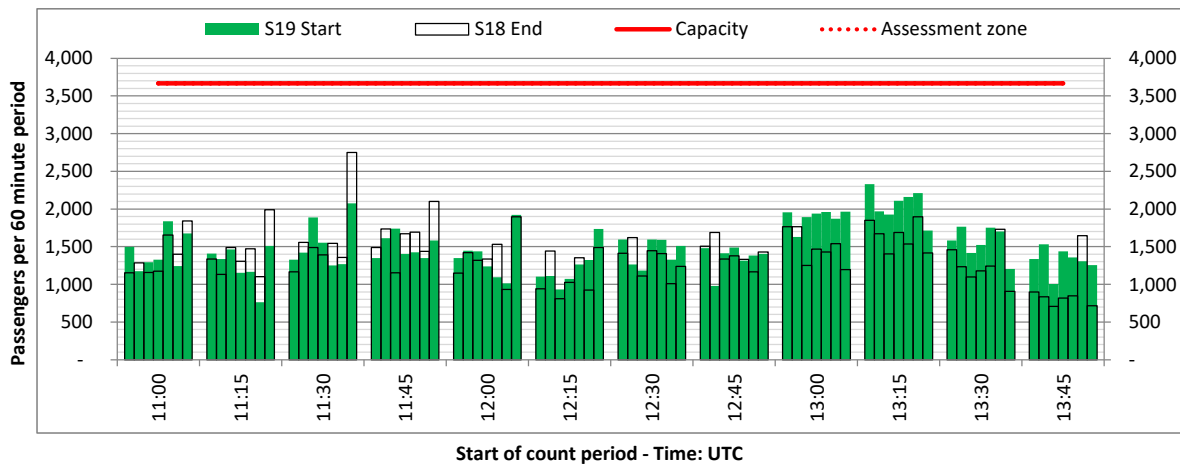
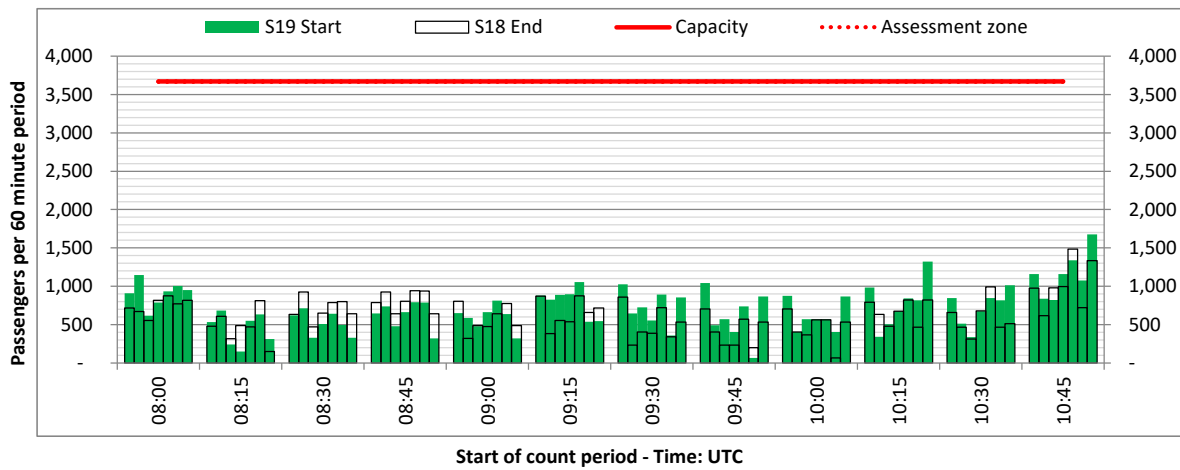
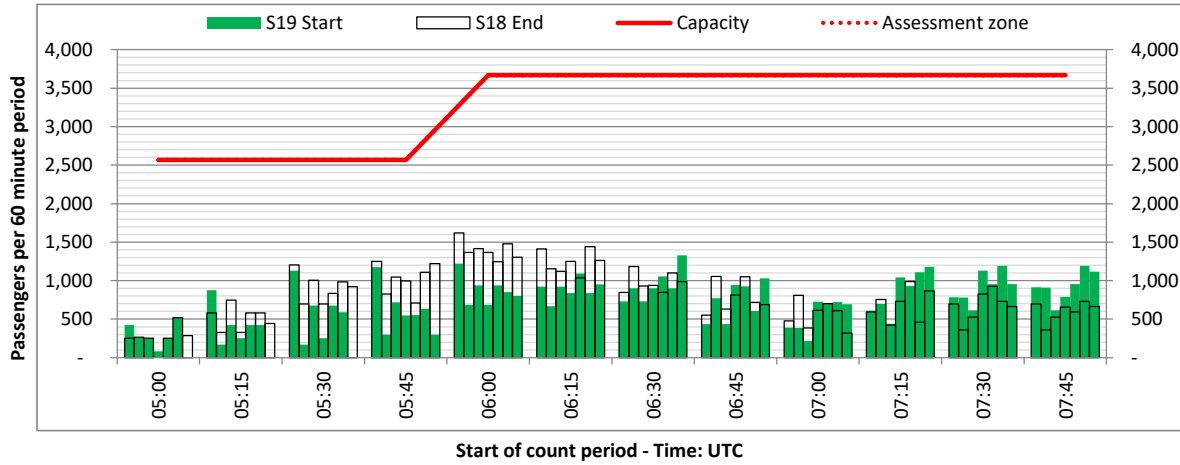
ARRIVAL - 60 minute count rolling every 15 mins (T60/15)



Terminals: 1I

Operators: All Operators

Days: 1234567



Peak Week - Passengers Histogram

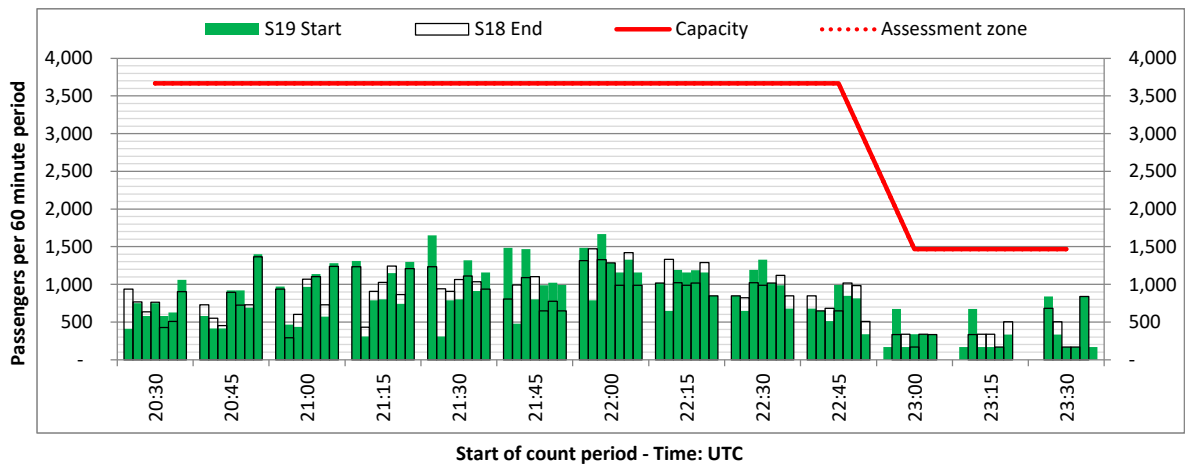
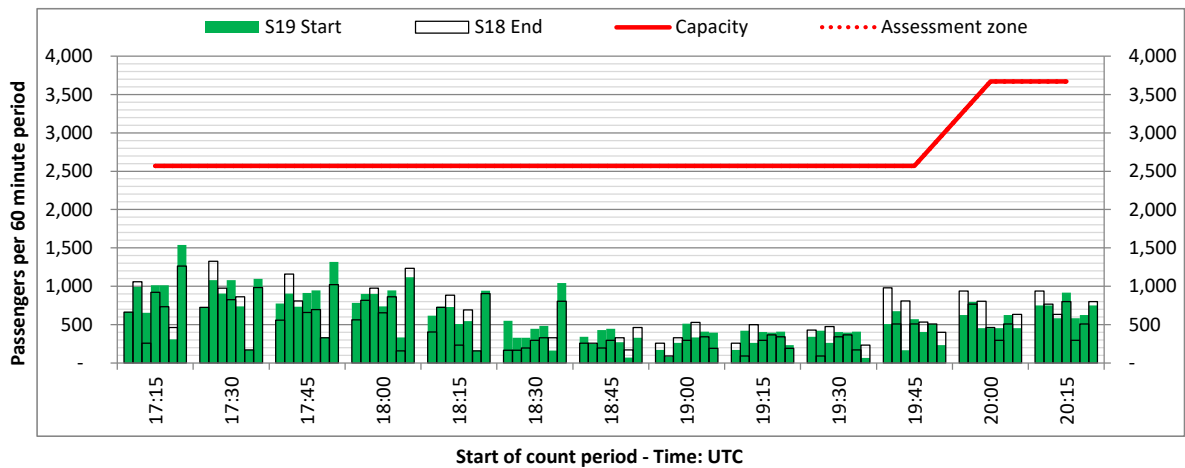
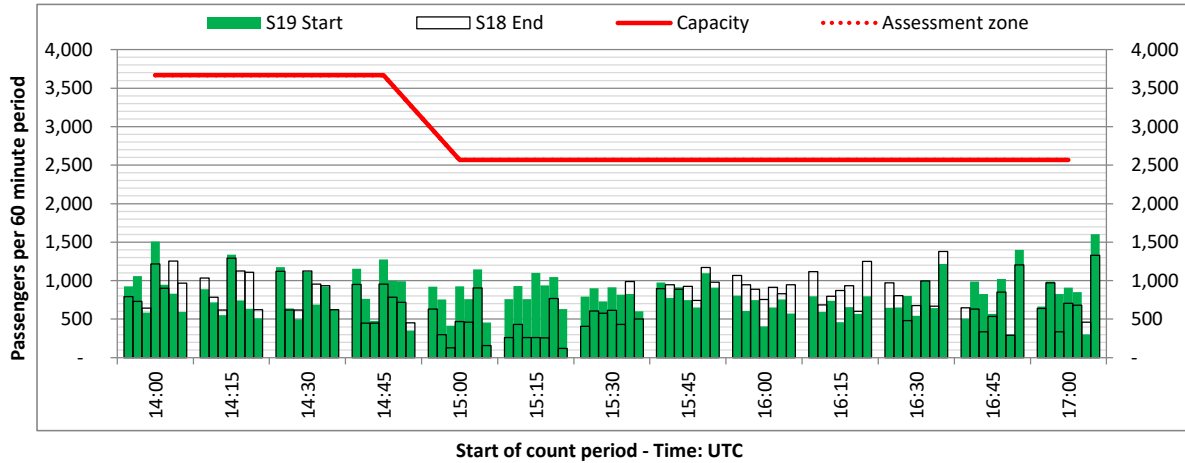
ARRIVAL - 60 minute count rolling every 15 mins (T60/15)



Terminals: 1I

Operators: All Operators

Days: 1234567



| | |
|--|--|
| Air Transport Movement (ATM) | Any aircraft movement which is either a scheduled or chartered passenger or cargo flight. |
| Common Travel Area (CTA) | Origin or Destination is in Republic of Ireland or the Channel Islands. |
| Demand | Unconstrained demand before any schedule adjustments have been made. |
| "Fill-in" | These are gaps in a historic series of slots which the carrier requests to "Fill-in" at Initial Submissions - Fill-ins will be recognisably part of the historic series and will have the same flight details to qualify as a "Fill-in". |
| Hist (SHL) | Snapshot of historic schedule rolled over from end of the previous equivalent season - as advised to airlines in the SHLs. |
| ICAO Size A | Aircraft with wingspan between 0.00m - 14.99m. |
| ICAO Size B | Aircraft with wingspan between 15.00m - 23.99m. |
| ICAO Size C | Aircraft with wingspan between 24.00m - 35.99m. |
| ICAO Size D | Aircraft with wingspan between 36.00m - 51.99m. |
| ICAO Size E | Aircraft with wingspan between 52.00m - 64.99m. |
| ICAO Size F | Aircraft with wingspan between 65.00m - 80.00m. |
| Init Coord | Snapshot of schedule immediately after Initial Coordination is completed - as advised to airlines in the SALs. |
| Passenger Air Transport Movement (PATM) | Any aircraft movement which is either a scheduled or chartered passenger flight. |
| Start | Snapshot of schedule shortly before the start of the scheduling season (exact date given below where used). |
| Time: Local | Times shown are in LOCAL time for the airport/scheduling season. |
| Time: UTC | Times shown are in Universal Time Constant (UTC). |

Data snapshot descriptions

| | |
|------------------|--|
| S18 Start | S18 schedule as cleared on Fri 23-Mar-18. |
| S18 End | S18 schedule as cleared on Sat 27-Oct-18. |
| S19 Start | S19 schedule as cleared on Fri 01-Feb-19. |
| Peak Week | Peak week for S18 is Mon 09-Jul-18 to Sun 15-Jul-18. Peak week for S19 is Mon 15-Jul-19 to Sun 21-Jul-19. |

For ACL use

| | Airport-Season-Branch-Resource | From date | To date | Time |
|-------------------|--------------------------------|-----------------|-----------------|------|
| Full Season Rep 1 | EDI-S18-SOS Report-Standard | Sun 25-Mar-2018 | Sat 27-Oct-2018 | UTC |
| Full Season Rep 2 | EDI-S18-Live-Standard | Sun 25-Mar-2018 | Sat 27-Oct-2018 | UTC |
| Full Season Rep 3 | EDI-S19-SOS Report-Standard | Sun 31-Mar-2019 | Sat 26-Oct-2019 | UTC |
| | Airport-Season-Branch-Resource | From date | To date | Time |
| Peak Week Rep 1 | EDI-S18-SOS Report-Standard | Mon 09-Jul-2018 | Sun 15-Jul-2018 | UTC |
| Peak Week Rep 2 | EDI-S18-Live-Standard | Mon 09-Jul-2018 | Sun 15-Jul-2018 | UTC |
| Peak Week Rep 3 | EDI-S19-SOS Report-Standard | Mon 15-Jul-2019 | Sun 21-Jul-2019 | UTC |