

Dublin Airport (DUB)

Summer 2019 (S19)



Start of Season Report

Report Date: Tue 26-Mar-2019

Headlines

	S19 Start	vs. S18 Start	vs. S18 End
Total Air Transport Movements (Passenger & Freight)	148,425	▲ 3.7%	▲ 5.5%
Total Passenger Air Transport Movements	145,395	▲ 3.6%	▲ 5.3%
Total Passenger Air Transport Movement Seats	25,388,862	▲ 4.7%	▲ 6.5%
Average Seats per Passenger Air Transport Movement	175	▲ 1.1%	▲ 1.1%
Percentage of allocated slots cleared as requested (OK)	97.8%		

Contents

Page Content

2	Runway Scheduling Limits
3	ATM Allocation by Operator (Full season and Peak Week Comparison)
4	Peak Week - Allocation and Slot Adjustment Distribution by Operator
5	Significant Route Changes
6	Full Season - ATM Analysis
7	Full Season - PATM Seats Analysis
8	Full Season - Terminal Analysis
9	Full Season - Aircraft Size Analysis
10	Full Season - Seasonality
11	Peak Week - Hourly Runway Demand
12	Peak Week - Hourly Runway Allocation
13	Peak Week - Hourly Runway Allocation Comparison (S19 Start vs. S18 Start)
14	Peak Week - Hourly Runway Allocation Comparison (S19 Start vs. S18 End)
15	Peak Week Histogram - Arrival Passengers (T60/10) - 1 - All Operators
16	Peak Week Histogram - Arrival Passengers (T60/10) - 2 - All Operators
17	Peak Week Histogram - Departure Passengers (T60/10) - 1 - All Operators
18	Peak Week Histogram - Departure Passengers (T60/10) - 2 - All Operators
19	Glossary

S18 scheduling season runs from Sun 25-Mar-2018 to Sat 27-Oct-2018 (217 days).

S19 scheduling season runs from Sun 31-Mar-2019 to Sat 26-Oct-2019 (210 days).

S18 full season data is adjusted by a factor of 0.96774 in order to directly compare against S19 full season data.

Disclaimer

No warranty whether expressed or implied as to the completeness, accuracy, fitness for purpose, or satisfactory quality is given by ACL regarding the information in this report, which is provided by third parties. Accordingly, ACL excludes all liability with regard to such data.

The contents of this report may not be reproduced without the written consent of ACL.

Air Transport Movement Allocation by Operator

Comparison between S18 Start vs. S19 Start



Operator	FULL SEASON ALLOCATION							PEAK WEEK ALLOCATION								
	S18 ATMs	S19 ATMs	+/- change	S19 Rank	S18 Seats	S19 Seats	+/- change	S19 Rank	S18 ATMs	S19 ATMs	+/- change	S19 Rank	S18 Seats	S19 Seats	+/- change	S19 Rank
Aegean Airlines	170	194	24	48	29,636	33,756	4,120	40	8	8	0	44	1,392	1,392	0	40
Aer Lingus	52,229	55,068	2,839	1	8,634,117	8,951,959	317,842	2	1,803	1,897	94	1	298,180	308,700	10,520	2
Aeroflot	-	420	420	32	-	58,800	58,800	36	-	14	33	-	-	1,960	1,960	37
Air Arabia Maroc	120	78	-42	54	20,880	13,572	-7,308	46	4	2	-2	55	696	348	-348	50
Air Canada	722	710	-12	20	190,732	199,968	9,236	14	32	28	-4	16	8,260	8,078	-182	14
Air Europa	32	-	-32	67	5,940	-	-5,940	59	2	-	-2	61	372	-	-372	53
Air France	1,740	1,722	-18	8	192,780	211,742	18,962	12	58	58	0	8	6,426	7,284	858	15
Air Lubo	-	-	0	67	-	-	0	59	-	-	0	61	-	-	0	53
Air Moldova	211	290	79	42	30,774	52,150	21,376	38	8	14	6	33	1,136	2,516	1,380	33
Air Nostrum	75	74	-1	55	7,452	6,580	-872	49	4	4	0	53	400	360	-40	48
Air Transat	221	220	-1	47	69,341	67,248	-2,093	33	10	10	0	39	3,048	3,048	0	28
airBaltic	-	240	240	43	-	34,800	34,800	39	-	8	8	44	-	1,160	1,160	41
Airest	300	300	0	38	-	-	0	59	10	10	0	39	-	-	0	53
AlbaStar	148	179	31	49	26,072	33,033	6,961	41	6	8	2	44	1,096	1,474	378	39
American Airlines	1,488	1,352	-136	9	332,607	335,292	2,685	6	56	56	0	9	12,544	14,070	1,526	5
Arkia	26	21	-5	60	6,262	4,463	-1,799	52	2	2	0	55	378	438	60	46
ASL Airlines Belgium	300	300	0	38	-	-	0	59	10	10	0	39	-	-	0	53
ASL Airlines France	4	4	0	65	569	588	19	57	-	-	0	61	-	-	0	53
ASL Airlines Ireland	8	5	-3	63	1,146	740	-406	55	-	-	0	61	-	-	0	53
Aurigny Air Services	-	-	0	67	-	-	0	59	-	-	0	61	-	-	0	53
Blue Air	650	658	8	21	116,123	115,074	-1,049	21	24	24	0	22	4,284	4,204	-80	22
Blue Panorama Airlines	8	-	-8	67	1,301	-	-1,301	59	-	-	0	61	-	-	0	53
Bluebird Cargo	300	300	0	38	-	-	0	59	10	10	0	39	-	-	0	53
British Airways	4,974	4,938	-36	3	644,315	687,824	43,509	3	152	154	2	3	19,838	21,836	1,998	3
Cathay Pacific	165	240	75	43	46,065	67,200	21,135	34	8	8	0	44	2,240	2,240	0	35
Cello Aviation	342	-	-342	67	50,559	-	-50,559	59	15	-	-15	61	2,220	-	-2,220	53
Cityjet	2,439	-	-2,439	67	231,677	-	-231,677	59	86	-	-86	61	8,170	-	-8,170	53
Cobalt Air	120	-	-120	67	17,280	-	-17,280	59	4	-	-4	61	576	-	-576	53
Croatia Airlines	99	170	71	50	14,214	24,480	10,266	43	4	6	2	50	576	864	288	44
Danish Air Transport	9	9	0	61	583	640	57	56	-	-	0	61	-	-	0	53
Delta Air Lines	1,092	1,260	168	10	268,560	289,148	20,588	8	42	42	0	11	9,898	10,052	154	8
Eastern Airways	3	-	-3	67	145	-	-145	59	-	-	0	61	-	-	0	53
Emirates	840	800	-40	18	319,510	316,560	-2,950	7	28	28	0	16	10,080	11,032	952	7
Enter Air	-	9	9	61	-	1,701	1,701	53	-	-	0	61	-	-	0	53
Ethiopian Airlines	439	240	-199	43	118,626	64,800	-53,826	35	16	8	-8	44	4,320	2,160	-2,160	36
Etihad Airways	840	514	-326	29	220,080	208,760	-11,320	13	28	22	-6	24	7,336	8,808	1,472	11
European Air Transport (DHL)	486	780	294	19	-	-	0	59	16	26	10	21	-	-	0	53
Eurowings	650	586	-64	24	117,058	106,200	-10,858	22	22	20	-2	26	3,960	3,624	-336	25
Federal Express	298	300	2	38	-	-	0	59	10	10	0	39	-	-	0	53
Finnair	571	588	17	23	71,501	70,498	-1,003	32	20	20	0	26	2,760	2,380	-380	34
FLEXFLIGHT APS	-	46	46	58	-	4,600	4,600	51	-	2	2	55	-	200	200	52
Fly Ernest	35	36	1	59	6,271	6,480	209	50	2	2	0	55	360	360	0	48
Fly One	141	130	-11	52	24,585	20,220	-4,365	44	6	6	0	50	1,044	924	-120	43
Flybe	4,331	2,924	-1,407	4	412,006	241,212	-170,794	11	146	98	-48	4	13,828	8,084	-5,744	13
Hainan Airlines	248	360	112	37	65,766	85,800	20,034	27	12	12	0	38	3,188	2,860	-328	30
Iberia	534	-	-534	67	95,876	-	-95,876	59	28	-	-28	61	5,022	-	-5,022	53
Iberia Express	2	542	540	26	331	97,560	97,229	24	-	28	28	16	-	5,040	5,040	19
Icelandair	300	534	234	27	54,900	97,956	43,056	23	12	20	8	26	2,196	3,660	1,464	24
KLM Royal Dutch Airlines	2,472	2,302	-170	6	270,232	251,008	-19,224	10	94	76	-18	6	10,552	8,596	-1,956	12
Lauda Motion	-	420	420	32	-	75,600	75,600	30	-	14	14	33	-	2,520	2,520	31
Loganair	612	586	-26	24	24,145	26,058	1,913	42	22	24	2	22	856	1,016	160	42
Lufthansa	2,501	2,917	416	5	438,662	504,275	65,613	4	84	98	14	4	14,728	16,926	2,198	4
Luxair	819	400	-419	35	66,480	57,220	-9,260	37	28	14	-14	33	2,348	1,934	-414	38
Maleth-Aero	1	-	-1	67	58	-	-58	59	-	-	0	61	-	-	0	53
Neos	6	1	-5	66	1,080	186	-894	58	-	-	0	61	-	-	0	53
Norwegian	2,092	1,884	-208	7	393,045	354,471	-38,574	5	80	66	-14	7	15,042	12,426	-2,616	6
Qatar Airways	420	526	106	28	142,380	133,604	-8,776	19	14	22	8	24	4,746	5,588	842	18
RVL Aviation	238	240	2	43	-	-	0	59	8	8	0	44	-	-	0	53
Ryanair	48,462	52,303	3,841	2	9,157,896	9,885,267	727,371	1	1,592	1,785	193	2	300,888	337,365	36,477	1
S7 Airlines	25	50	25	57	3,623	7,900	4,277	48	-	2	2	55	-	316	316	51
SAS Scandinavian	1,446	1,222	-224	12	237,205	199,104	-38,101	15	44	42	-2	11	7,264	6,678	-586	16
Sky Taxi	2	-	-2	67	64	-	-64	59	-	-	0	61	-	-	0	53
Star Air	596	-	-596	67	-	-	0	59	20	-	-20	61	-	-	0	53
Stobart Air	-	856	856	15	-	83,888	83,888	29	-	35	35	15	-	3,430	3,430	26
SunExpress	50	52	2	56	9,511	9,828	317	47	2	2	0	55	378	378	0	47
Swiss International	863	1,026	163	14	161,599	181,670	20,071	17	30	36	6	14	5,596	6,326	730	17
TAP Air Portugal	-	838	838	17	-	130,796	130,796	20	-	28	28	16	-	4,392	4,392	21
Transavia	6	5	-1	63	1,097	945	-152	54	1	-	-1	61	189	-	-189	53
Transavia France	437	454	17	30	82,672	85,806	3,134	26	14	16	2	31	2,646	3,024	378	29
Travel Service	79	82	3	53	14,998	15,498	500	45	4	4	0	53	756	756	0	45
TUI Airways	636	1,032	396	13	121,671	196,602	74,931	16	28	50	22	10	5,292	9,450	4,158	9
Turkish Airlines	840	840	0	16	140,760	150,780	10,020	18	28	28	0	16	4,692	5,026	334	20
United Airlines	1,229	1,248	19	11	289,606	278,368	-11,238	9	42	42	0	11	9,828	9,184	-644	10
UPS Airlines	-	600	600	22	-	-	0	59	-	20	20	26	-	-	0	53
Vueling	435	420	-15	32	78,387	75,600	-2,787	30	14	14	0	33	2,520	2,520	0	31
West Atlantic Cargo	-	-	0	67	-	-	0	59	-	-	0	61	-	-	0	53
Westjet	329	394	65	36	44,090	85,784	41,694	28	14	18	4	30	1,876	4,008	2,132	23
WOW Air	619	436	-183	31	123,871	87,200	-36,671	25	22	16	-6	31	4,400	3,200	-1,200	27
Zimex Aviation	149	150	1	51												

Peak Week - Allocation and Slot Adjustment Distribution by Operator



Schedule: S19 Start

Operator	S19 allocated ATMs	SLOT ADJUSTMENTS (MINUTES OFF REQUESTED TIME)													Requests with NO slot allocated		
		0	5	10	15	20	25	30	35	40	45	50	55	60		>60	
Agean Airlines	8	100.0%	0.0%	0.0%	0.0%	0.0%	0.0%	0.0%	0.0%	0.0%	0.0%	0.0%	0.0%	0.0%	0.0%	0.0%	-
Aer Lingus	1,897	99.0%	0.5%	0.1%	0.0%	0.1%	0.0%	0.1%	0.1%	0.1%	0.0%	0.0%	0.0%	0.0%	0.1%	0.0%	2
Aeroflot	14	100.0%	0.0%	0.0%	0.0%	0.0%	0.0%	0.0%	0.0%	0.0%	0.0%	0.0%	0.0%	0.0%	0.0%	0.0%	-
Air Arabia Maroc	2	100.0%	0.0%	0.0%	0.0%	0.0%	0.0%	0.0%	0.0%	0.0%	0.0%	0.0%	0.0%	0.0%	0.0%	0.0%	-
Air Canada	28	100.0%	0.0%	0.0%	0.0%	0.0%	0.0%	0.0%	0.0%	0.0%	0.0%	0.0%	0.0%	0.0%	0.0%	0.0%	-
Air Europa	-	-	-	-	-	-	-	-	-	-	-	-	-	-	-	-	-
Air France	58	100.0%	0.0%	0.0%	0.0%	0.0%	0.0%	0.0%	0.0%	0.0%	0.0%	0.0%	0.0%	0.0%	0.0%	0.0%	-
Air Moldova	14	100.0%	0.0%	0.0%	0.0%	0.0%	0.0%	0.0%	0.0%	0.0%	0.0%	0.0%	0.0%	0.0%	0.0%	0.0%	-
Air Nostrum	4	75.0%	25.0%	0.0%	0.0%	0.0%	0.0%	0.0%	0.0%	0.0%	0.0%	0.0%	0.0%	0.0%	0.0%	0.0%	-
Air Transat	10	100.0%	0.0%	0.0%	0.0%	0.0%	0.0%	0.0%	0.0%	0.0%	0.0%	0.0%	0.0%	0.0%	0.0%	0.0%	-
airBaltic	8	100.0%	0.0%	0.0%	0.0%	0.0%	0.0%	0.0%	0.0%	0.0%	0.0%	0.0%	0.0%	0.0%	0.0%	0.0%	-
Airest	10	100.0%	0.0%	0.0%	0.0%	0.0%	0.0%	0.0%	0.0%	0.0%	0.0%	0.0%	0.0%	0.0%	0.0%	0.0%	-
AlbaStar	8	62.5%	12.5%	0.0%	25.0%	0.0%	0.0%	0.0%	0.0%	0.0%	0.0%	0.0%	0.0%	0.0%	0.0%	0.0%	-
American Airlines	56	96.4%	0.0%	1.8%	1.8%	0.0%	0.0%	0.0%	0.0%	0.0%	0.0%	0.0%	0.0%	0.0%	0.0%	0.0%	-
Arkia	2	100.0%	0.0%	0.0%	0.0%	0.0%	0.0%	0.0%	0.0%	0.0%	0.0%	0.0%	0.0%	0.0%	0.0%	0.0%	-
ASL Airlines Belgium	10	100.0%	0.0%	0.0%	0.0%	0.0%	0.0%	0.0%	0.0%	0.0%	0.0%	0.0%	0.0%	0.0%	0.0%	0.0%	-
ASL Airlines France	-	-	-	-	-	-	-	-	-	-	-	-	-	-	-	-	-
Aurigny Air Services	-	-	-	-	-	-	-	-	-	-	-	-	-	-	-	-	2
Blue Air	24	79.2%	8.3%	0.0%	0.0%	0.0%	4.2%	0.0%	0.0%	0.0%	0.0%	0.0%	0.0%	0.0%	8.3%	0.0%	-
Bluebird Cargo	10	100.0%	0.0%	0.0%	0.0%	0.0%	0.0%	0.0%	0.0%	0.0%	0.0%	0.0%	0.0%	0.0%	0.0%	0.0%	-
British Airways	154	100.0%	0.0%	0.0%	0.0%	0.0%	0.0%	0.0%	0.0%	0.0%	0.0%	0.0%	0.0%	0.0%	0.0%	0.0%	-
Cathay Pacific	8	100.0%	0.0%	0.0%	0.0%	0.0%	0.0%	0.0%	0.0%	0.0%	0.0%	0.0%	0.0%	0.0%	0.0%	0.0%	-
Cello Aviation	-	-	-	-	-	-	-	-	-	-	-	-	-	-	-	-	-
Cityjet	-	-	-	-	-	-	-	-	-	-	-	-	-	-	-	-	-
Cobalt Air	-	-	-	-	-	-	-	-	-	-	-	-	-	-	-	-	-
Croatia Airlines	6	100.0%	0.0%	0.0%	0.0%	0.0%	0.0%	0.0%	0.0%	0.0%	0.0%	0.0%	0.0%	0.0%	0.0%	0.0%	-
Danish Air Transport	-	-	-	-	-	-	-	-	-	-	-	-	-	-	-	-	-
Delta Air Lines	42	100.0%	0.0%	0.0%	0.0%	0.0%	0.0%	0.0%	0.0%	0.0%	0.0%	0.0%	0.0%	0.0%	0.0%	0.0%	-
Emirates	28	100.0%	0.0%	0.0%	0.0%	0.0%	0.0%	0.0%	0.0%	0.0%	0.0%	0.0%	0.0%	0.0%	0.0%	0.0%	-
Ethiopian Airlines	8	37.5%	12.5%	0.0%	0.0%	0.0%	0.0%	0.0%	0.0%	0.0%	0.0%	0.0%	0.0%	12.5%	37.5%	0.0%	-
Etihad Airways	22	50.0%	31.8%	9.1%	9.1%	0.0%	0.0%	0.0%	0.0%	0.0%	0.0%	0.0%	0.0%	0.0%	0.0%	0.0%	-
European Air Transport (DHL)	26	100.0%	0.0%	0.0%	0.0%	0.0%	0.0%	0.0%	0.0%	0.0%	0.0%	0.0%	0.0%	0.0%	0.0%	0.0%	-
Eurowings	20	100.0%	0.0%	0.0%	0.0%	0.0%	0.0%	0.0%	0.0%	0.0%	0.0%	0.0%	0.0%	0.0%	0.0%	0.0%	-
Federal Express	10	100.0%	0.0%	0.0%	0.0%	0.0%	0.0%	0.0%	0.0%	0.0%	0.0%	0.0%	0.0%	0.0%	0.0%	0.0%	-
Finnair	20	100.0%	0.0%	0.0%	0.0%	0.0%	0.0%	0.0%	0.0%	0.0%	0.0%	0.0%	0.0%	0.0%	0.0%	0.0%	-
FLEXFLIGHT APS	2	0.0%	50.0%	50.0%	0.0%	0.0%	0.0%	0.0%	0.0%	0.0%	0.0%	0.0%	0.0%	0.0%	0.0%	0.0%	2
Fly Ernest	2	0.0%	0.0%	50.0%	50.0%	0.0%	0.0%	0.0%	0.0%	0.0%	0.0%	0.0%	0.0%	0.0%	0.0%	0.0%	-
Fly One	6	33.3%	0.0%	0.0%	0.0%	0.0%	16.7%	0.0%	16.7%	0.0%	0.0%	0.0%	0.0%	0.0%	33.3%	0.0%	-
Flybe	98	99.0%	1.0%	0.0%	0.0%	0.0%	0.0%	0.0%	0.0%	0.0%	0.0%	0.0%	0.0%	0.0%	0.0%	0.0%	4
Hainan Airlines	12	91.7%	0.0%	8.3%	0.0%	0.0%	0.0%	0.0%	0.0%	0.0%	0.0%	0.0%	0.0%	0.0%	0.0%	0.0%	-
Iberia	-	-	-	-	-	-	-	-	-	-	-	-	-	-	-	-	-
Iberia Express	28	85.7%	7.1%	7.1%	0.0%	0.0%	0.0%	0.0%	0.0%	0.0%	0.0%	0.0%	0.0%	0.0%	0.0%	0.0%	-
Icelandair	20	100.0%	0.0%	0.0%	0.0%	0.0%	0.0%	0.0%	0.0%	0.0%	0.0%	0.0%	0.0%	0.0%	0.0%	0.0%	-
KLM Royal Dutch Airlines	76	93.4%	0.0%	6.6%	0.0%	0.0%	0.0%	0.0%	0.0%	0.0%	0.0%	0.0%	0.0%	0.0%	0.0%	0.0%	-
Lauda Motion	14	100.0%	0.0%	0.0%	0.0%	0.0%	0.0%	0.0%	0.0%	0.0%	0.0%	0.0%	0.0%	0.0%	0.0%	0.0%	-
Loganair	24	91.7%	0.0%	0.0%	0.0%	0.0%	0.0%	0.0%	0.0%	0.0%	0.0%	0.0%	0.0%	0.0%	8.3%	0.0%	-
Lufthansa	98	98.0%	2.0%	0.0%	0.0%	0.0%	0.0%	0.0%	0.0%	0.0%	0.0%	0.0%	0.0%	0.0%	0.0%	0.0%	8
Luxair	14	100.0%	0.0%	0.0%	0.0%	0.0%	0.0%	0.0%	0.0%	0.0%	0.0%	0.0%	0.0%	0.0%	0.0%	0.0%	-
Norwegian	66	93.9%	0.0%	1.5%	0.0%	0.0%	0.0%	4.5%	0.0%	0.0%	0.0%	0.0%	0.0%	0.0%	0.0%	0.0%	-
Qatar Airways	22	81.8%	18.2%	0.0%	0.0%	0.0%	0.0%	0.0%	0.0%	0.0%	0.0%	0.0%	0.0%	0.0%	0.0%	0.0%	-
RVL Aviation	8	100.0%	0.0%	0.0%	0.0%	0.0%	0.0%	0.0%	0.0%	0.0%	0.0%	0.0%	0.0%	0.0%	0.0%	0.0%	-
Ryanair	1,785	98.3%	0.8%	0.2%	0.1%	0.1%	0.1%	0.1%	0.1%	0.0%	0.0%	0.0%	0.0%	0.1%	0.1%	0.0%	-
S7 Airlines	2	100.0%	0.0%	0.0%	0.0%	0.0%	0.0%	0.0%	0.0%	0.0%	0.0%	0.0%	0.0%	0.0%	0.0%	0.0%	-
SAS Scandinavian	42	97.6%	2.4%	0.0%	0.0%	0.0%	0.0%	0.0%	0.0%	0.0%	0.0%	0.0%	0.0%	0.0%	0.0%	0.0%	-
SprintAir	-	-	-	-	-	-	-	-	-	-	-	-	-	-	-	-	-
Star Air	-	-	-	-	-	-	-	-	-	-	-	-	-	-	-	-	-
Stobart Air	35	100.0%	0.0%	0.0%	0.0%	0.0%	0.0%	0.0%	0.0%	0.0%	0.0%	0.0%	0.0%	0.0%	0.0%	0.0%	-
SunExpress	2	100.0%	0.0%	0.0%	0.0%	0.0%	0.0%	0.0%	0.0%	0.0%	0.0%	0.0%	0.0%	0.0%	0.0%	0.0%	-
Swiss International	36	100.0%	0.0%	0.0%	0.0%	0.0%	0.0%	0.0%	0.0%	0.0%	0.0%	0.0%	0.0%	0.0%	0.0%	0.0%	14
TAP Air Portugal	28	96.4%	0.0%	3.6%	0.0%	0.0%	0.0%	0.0%	0.0%	0.0%	0.0%	0.0%	0.0%	0.0%	0.0%	0.0%	-
Transavia	-	-	-	-	-	-	-	-	-	-	-	-	-	-	-	-	-
Transavia France	16	81.3%	0.0%	6.3%	12.5%	0.0%	0.0%	0.0%	0.0%	0.0%	0.0%	0.0%	0.0%	0.0%	0.0%	0.0%	-
Travel Service	4	100.0%	0.0%	0.0%	0.0%	0.0%	0.0%	0.0%	0.0%	0.0%	0.0%	0.0%	0.0%	0.0%	0.0%	0.0%	-
TUI Airways	50	90.0%	6.0%	0.0%	0.0%	0.0%	0.0%	0.0%	0.0%	0.0%	0.0%	0.0%	0.0%	2.0%	2.0%	0.0%	-
Turkish Airlines	28	50.0%	50.0%	0.0%	0.0%	0.0%	0.0%	0.0%	0.0%	0.0%	0.0%	0.0%	0.0%	0.0%	0.0%	0.0%	-
United Airlines	42	100.0%	0.0%	0.0%	0.0%	0.0%	0.0%	0.0%	0.0%	0.0%	0.0%	0.0%	0.0%	0.0%	0.0%	0.0%	-
UPS Airlines	20	100.0%	0.0%	0.0%	0.0%	0.0%	0.0%	0.0%	0.0%	0.0%	0.0%	0.0%	0.0%	0.0%	0.0%	0.0%	-
Vueling	14	100.0%	0.0%	0.0%	0.0%	0.0%	0.0%	0.0%	0.0%	0.0%	0.0%	0.0%	0.0%	0.0%	0.0%	0.0%	-
West Atlantic Cargo	-	-	-	-	-	-	-	-	-	-	-	-	-	-	-	-	-
Westjet	18	100.0%	0.0%	0.0%	0.0%	0.0%	0.0%	0.0%	0.0%	0.0%	0.0%	0.0%	0.0%	0.0%	0.0%	0.0%	-
WOW Air	16	87.5%	0.0%	0.0%	0.0%	0.0%	0.0%	0.0%	0.0%	0.0%	12.5%	0.0%	0.0%	0.0%	0.0%	0.0%	2
Zimex Aviation	5	100.0%	0.0%	0.0%	0.0%	0.0%	0.0%	0.0%	0.0%	0.0%	0.0%	0.0%	0.0%	0.0%	0.0%	0.0%	-
TOTAL	5,140	97.4%	1.3%	0.4%	0.2%	0.0%	0.1%	0.1%	0.1%	0.1%	0.0%	0.0%	0.0%	0.1%	0.3%	0.0%	34

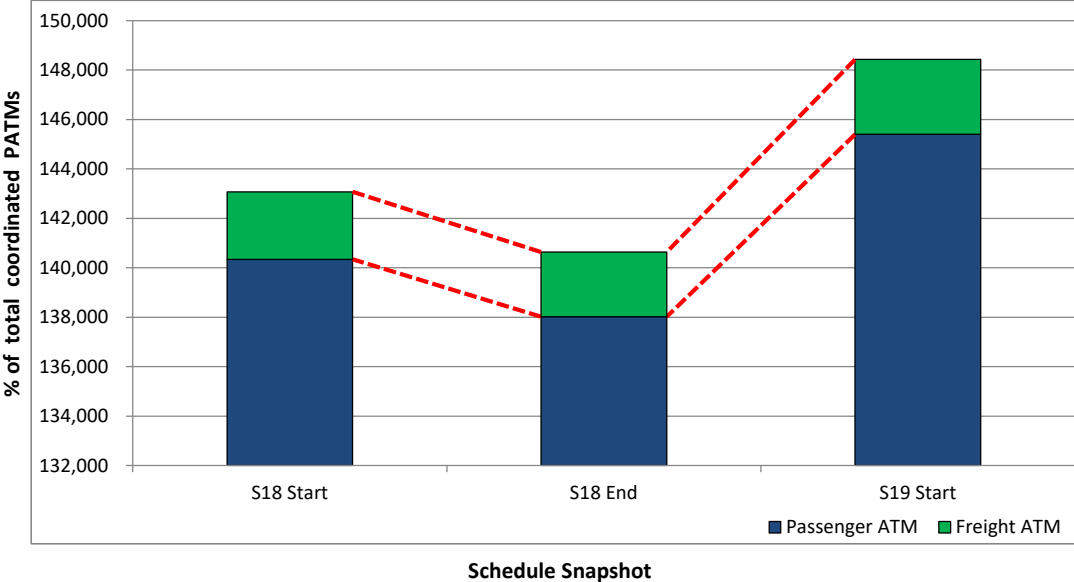
Operators with 0 'allocated ATMs' and 0 'Requests with NO slot allocated' in S19, are included in this list due to having slots allocated in either S18 Start or S18 End schedules.

Significant Route Changes



Operator	Category	Description of change from S18 schedule to S19 schedule
Aer Lingus	NEW	London City & Minneapolis services
Aer Lingus	CHANGE	Decrease Bordeaux, Hamburg, Milan Linate, Munich, Prague services
Aer Lingus	CHANGE	Decrease Edinburgh, London Gatwick, London Heathrow, Manchester services
Aer Lingus	CHANGE	Increase Bilbao, Paris CDG, Milan Malpensa, Nantes, Santiago, Seattle services
Aer Lingus	CANCELLED	Murcia & Stuttgart services
Aeroflot	NEW	Moscow service
Air Arabia Maroc	CHANGE	Decrease Agadir service
Air Canada	CHANGE	Decrease Montreal service
Air France	CHANGE	Decrease Paris CDG service
Air Moldova	CHANGE	Increase Chisinau service
airBaltic	NEW	Riga service
American Airlines	NEW	Dallas Fort Worth service
American Airlines	CANCELLED	New York JFK service
British Airways	CHANGE	Decrease London City service
Cathay Pacific	CHANGE	Increase Hong Kong service
Croatia Airlines	CHANGE	Increase Zagreb service
Delta Air Lines	NEW	Los Angeles service
Delta Air Lines	CHANGE	Increase Boston service
Emirates	CHANGE	Decrease Dubai service
Ethiopian Airlines	CANCELLED	Los Angeles service
Etihad Airways	CHANGE	Decrease Abu Dhabi service
European Air Transport (DHL)	CHANGE	Increase Leipzig service
Eurowings	CHANGE	Decrease Cologne-Bonn service
Flybe	CHANGE	Decrease Southampton service
Flybe	CANCELLED	Southend service
Hainan Airlines	CHANGE	Increase Beijing & Shenzhen services
Icelandair	CHANGE	Increase Keflavik service
KLM Royal Dutch Airlines	CHANGE	Decrease Amsterdam service
Lauda Motion	NEW	Vienna service
Loganair	NEW	Carlisle service
Lufthansa	CHANGE	Increase Munich service
Luxair	CHANGE	Decrease Luxembourg service
Norwegian	NEW	Hamilton service
Norwegian	CHANGE	Decrease Providence & Stewart services
Norwegian	CANCELLED	Helsinki service
Qatar Airways	CHANGE	Increase Doha service
Ryanair	NEW	Bodrum, Bordeaux, Cagliari, Dubrovnik, Dalaman, Southend, Thessaloniki, Split
Ryanair	NEW	Frankfurt Int'l, Gothenburg, Kiev, Lourdes, Luxembourg, Milan Malpensa
Westjet	NEW	Halifax & Calgary services
Westjet	CANCELLED	St Johns & Toronto Pearson services
WOW Air	CHANGE	Decrease Keflavik service

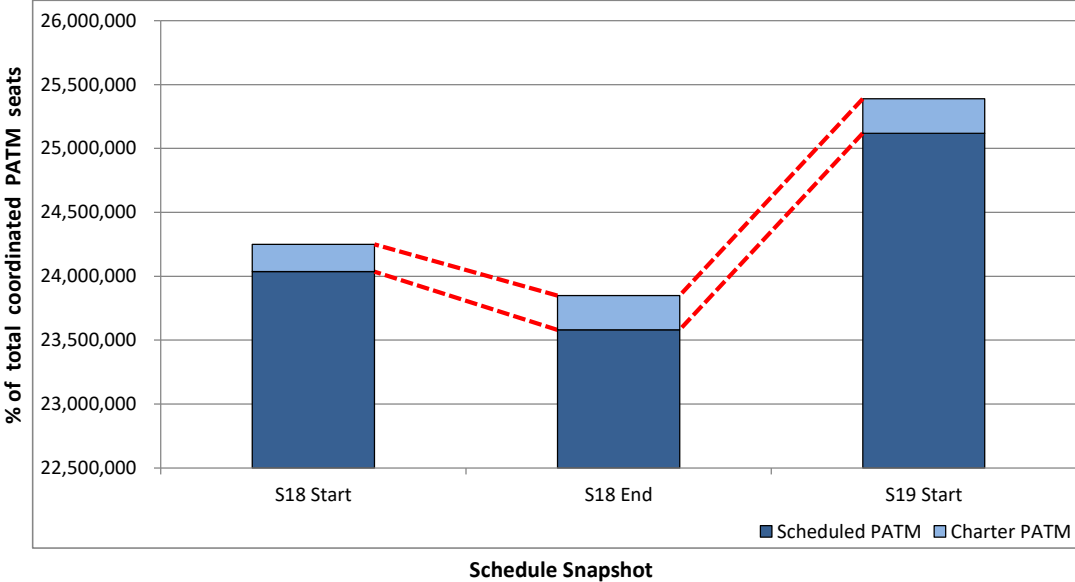
Total ATMs: Passenger ATMs vs. Freight ATMs



Full Season - PATM Seats Analysis



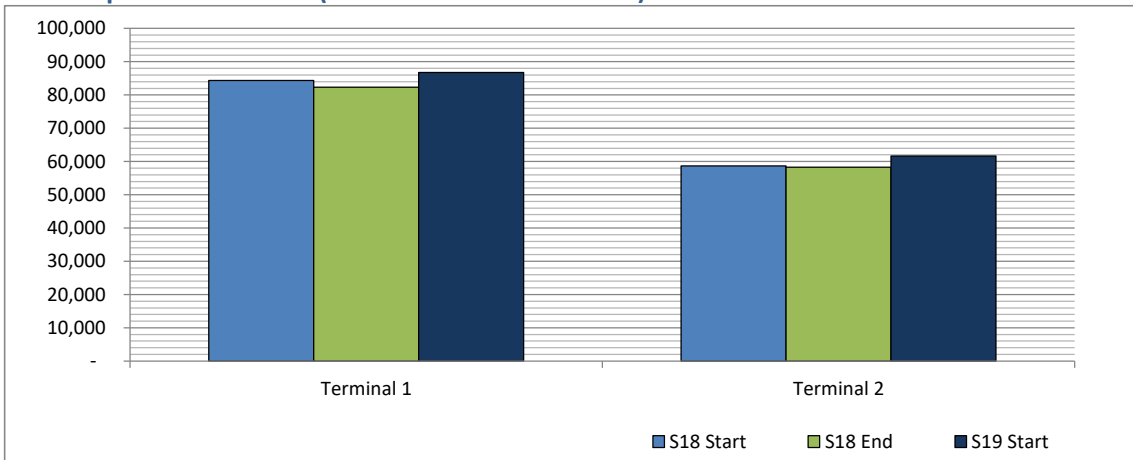
Total Passenger ATM seats: Scheduled vs. Charter



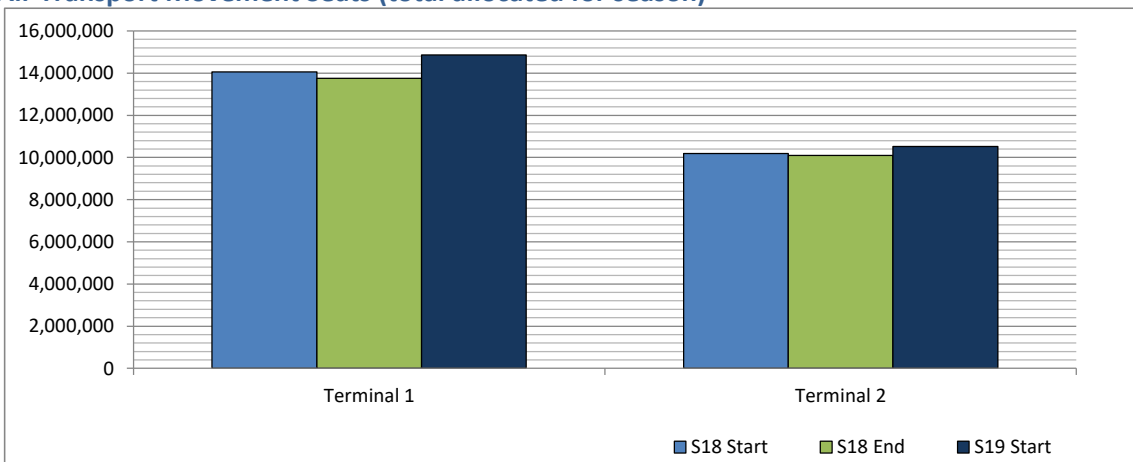
Full Season - Terminal Analysis



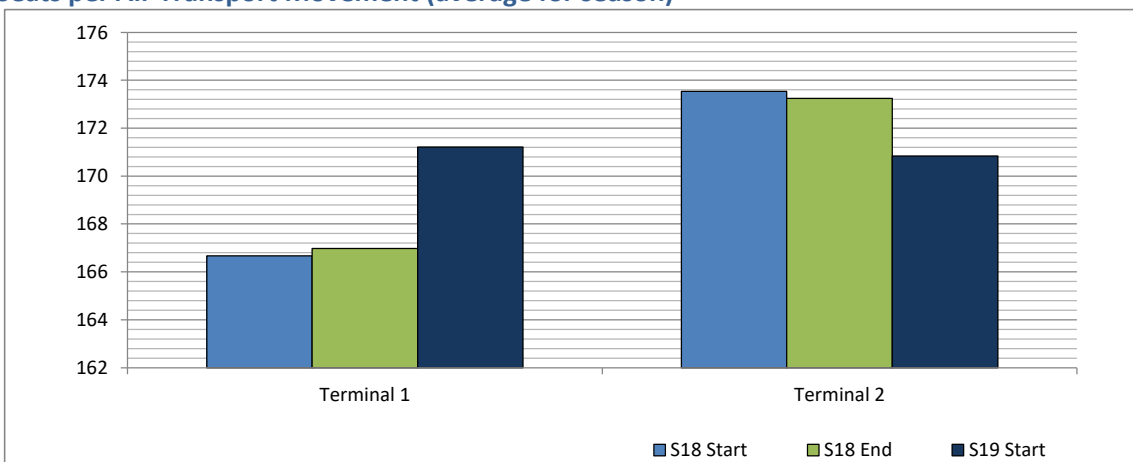
Air Transport Movements (total allocated for season)



Air Transport Movement Seats (total allocated for season)



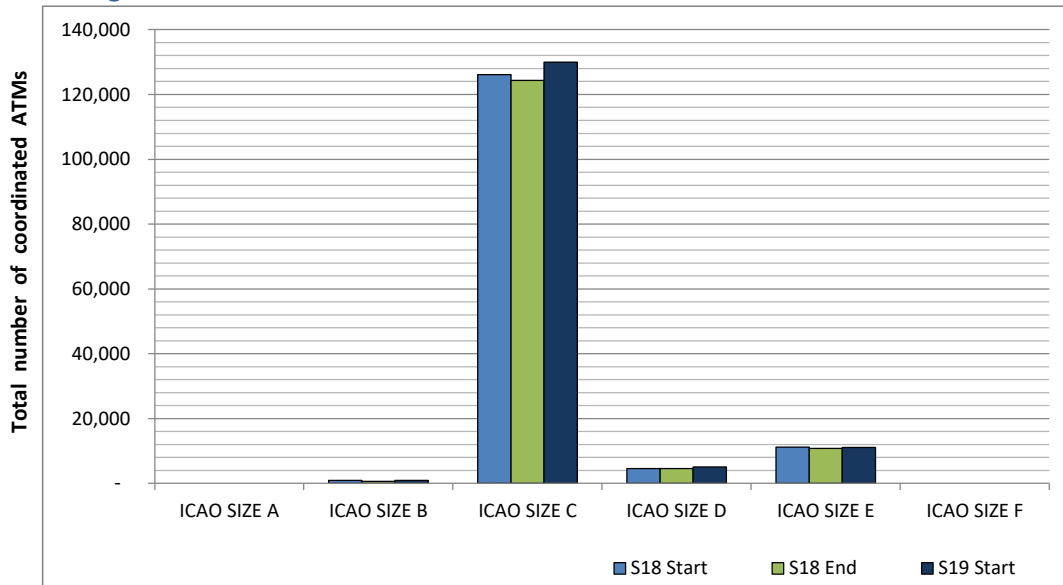
Seats per Air Transport Movement (average for season)



Full Season - Aircraft Size Analysis

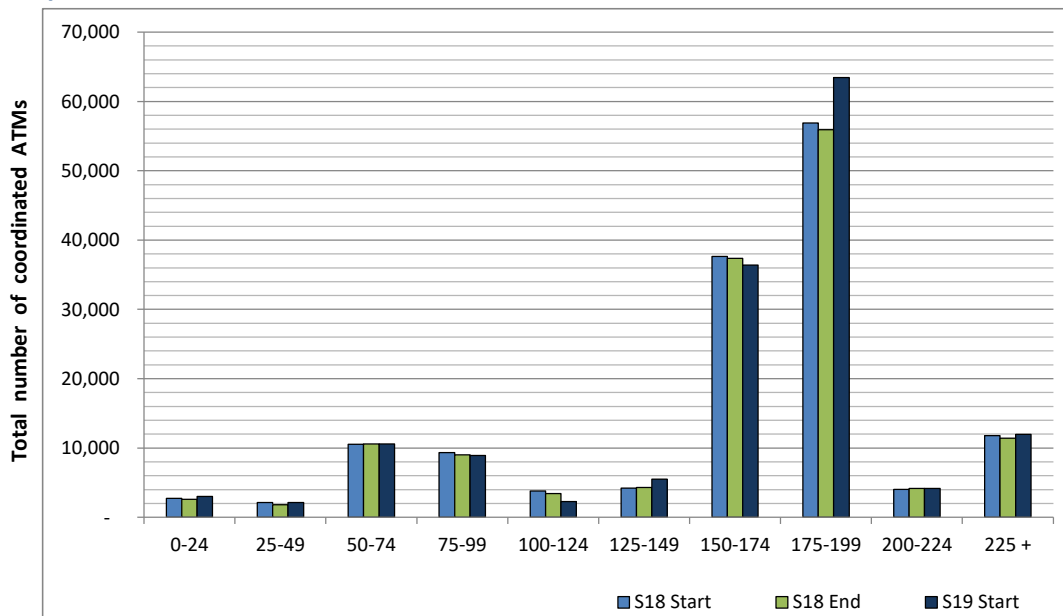


ICAO size designation



Note: See Glossary for definitions of ICAO SIZE groupings

Air Transport Movement seat distribution

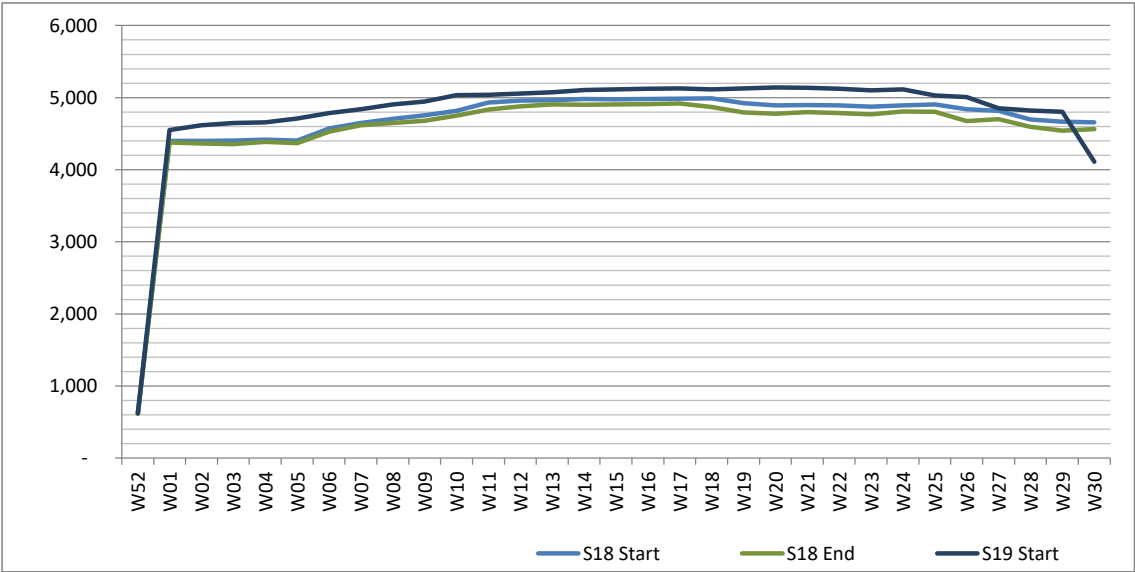


Note: FREIGHT-ONLY services with 0 seats are included in the first seat band '0-24'

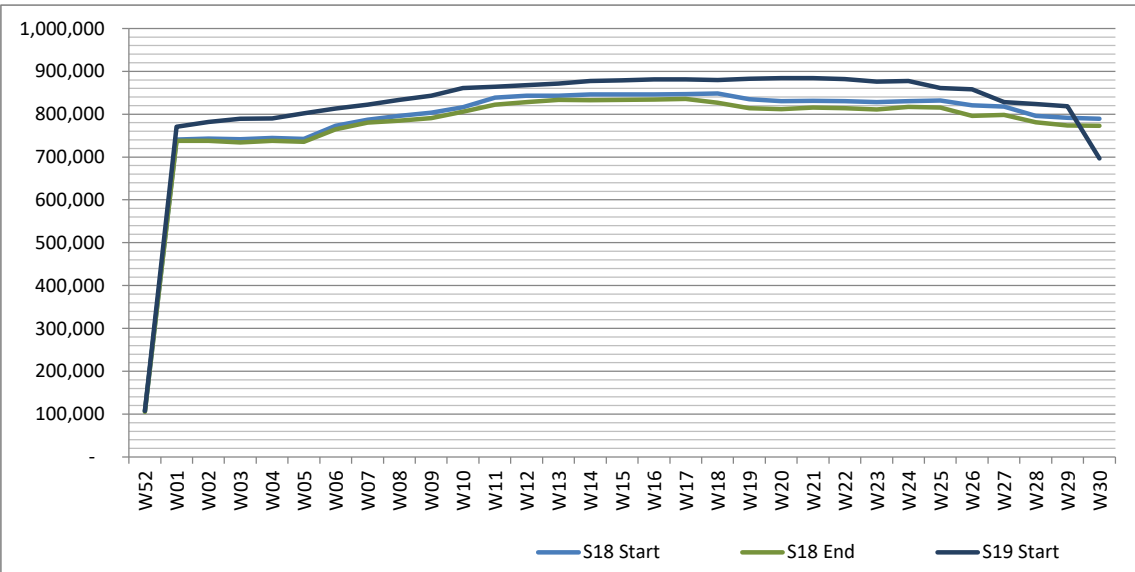
Full Season - Seasonality



Air Transport Movements by week of season



Air Transport Movement Seats by week of season



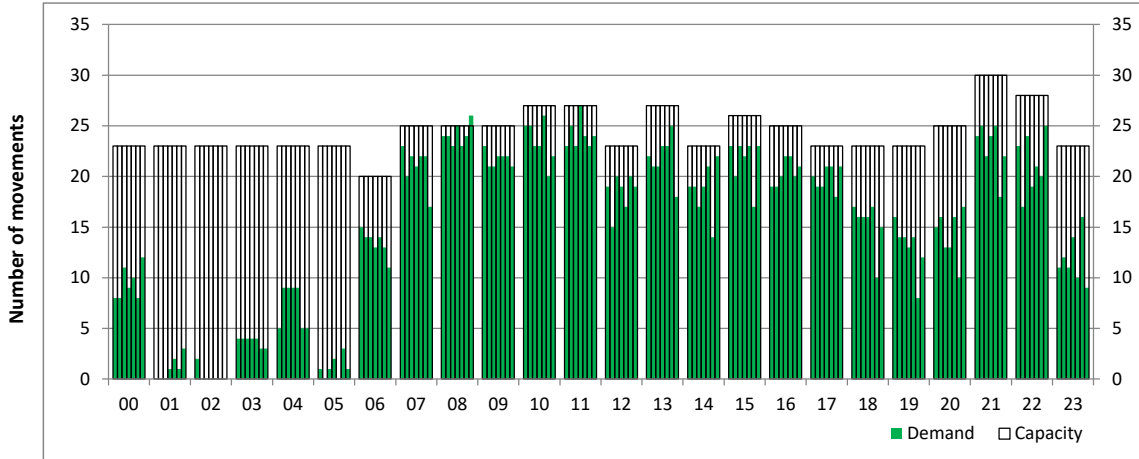
Peak Week - Hourly Runway Demand

Schedule: S19 Start



Hourly Arrival Demand

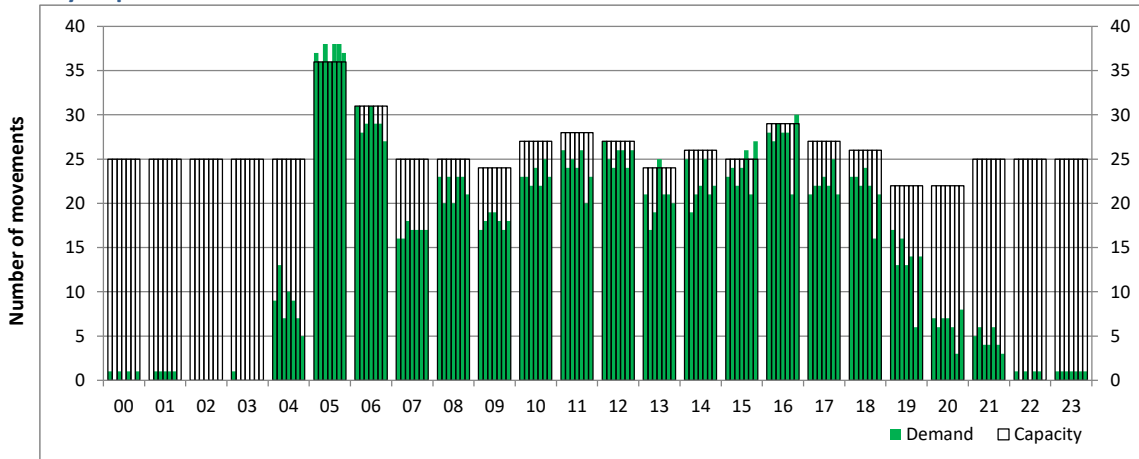
Time: UTC



Hour of day (24 hour format)

Hourly Departure Demand

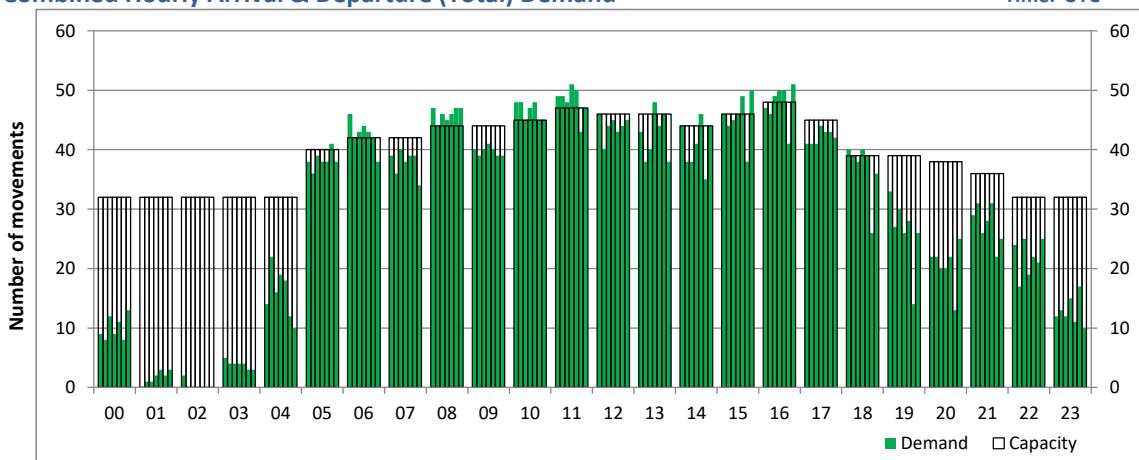
Time: UTC



Hour of day (24 hour format)

Combined Hourly Arrival & Departure (Total) Demand

Time: UTC



Hour of day (24 hour format)

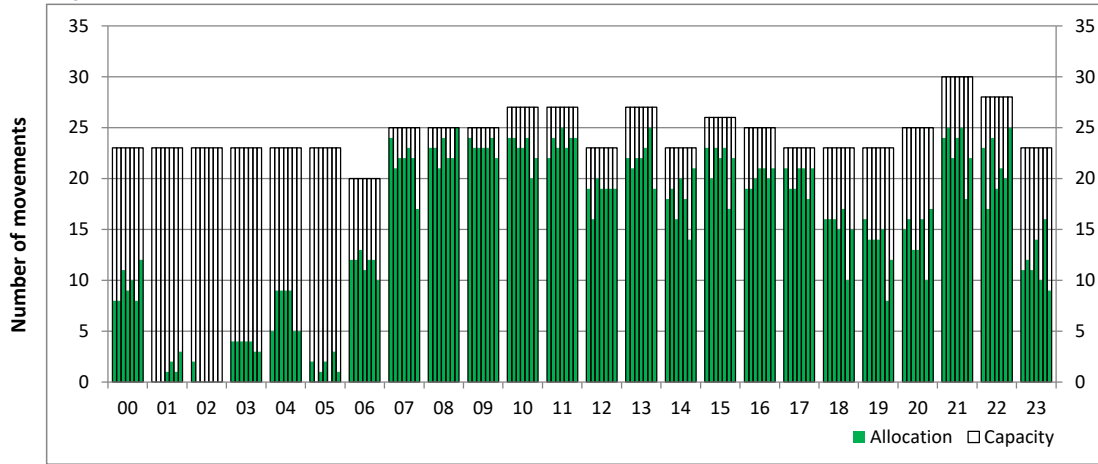
Peak Week - Hourly Runway Allocation

Schedule: S19 Start



Hourly Arrival Allocation

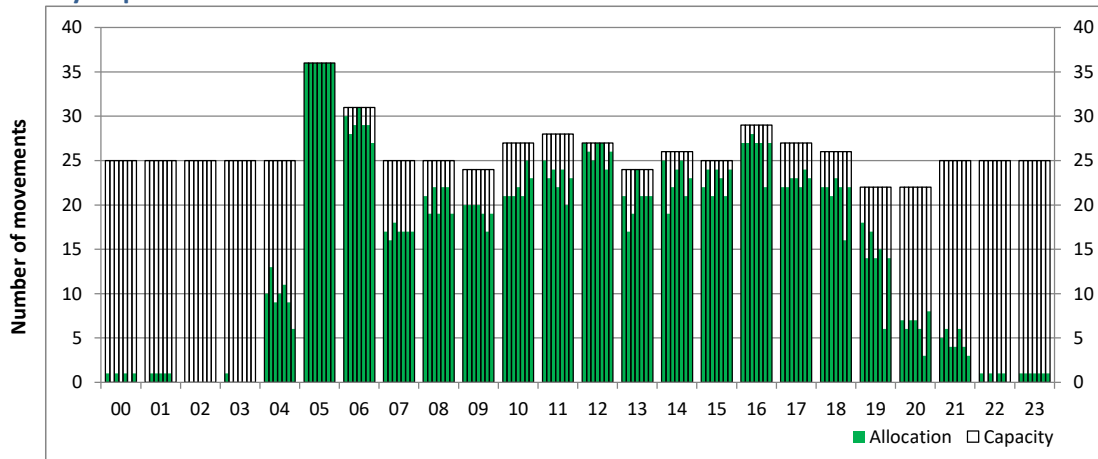
Time: UTC



Hour of day (24 hour format)

Hourly Departure Allocation

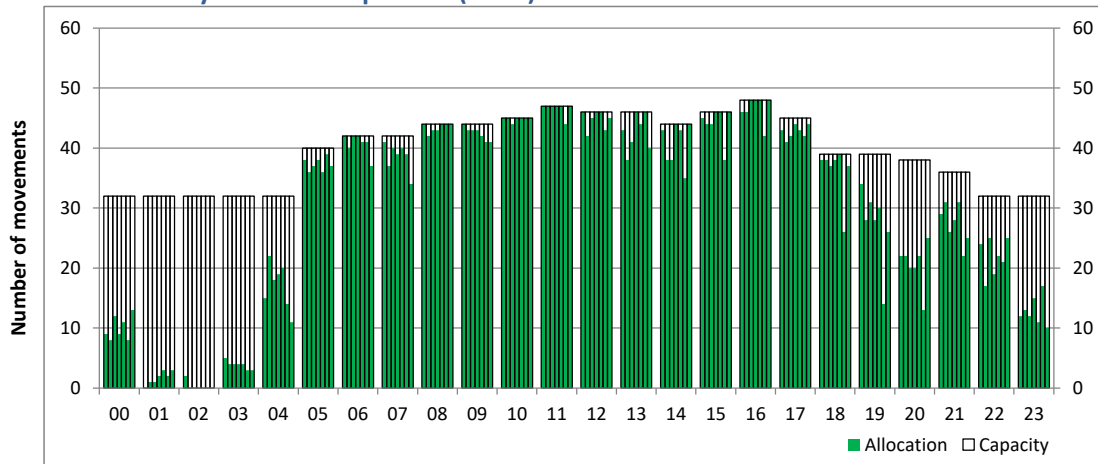
Time: UTC



Hour of day (24 hour format)

Combined Hourly Arrival & Departure (Total) Allocation

Time: UTC



Hour of day (24 hour format)

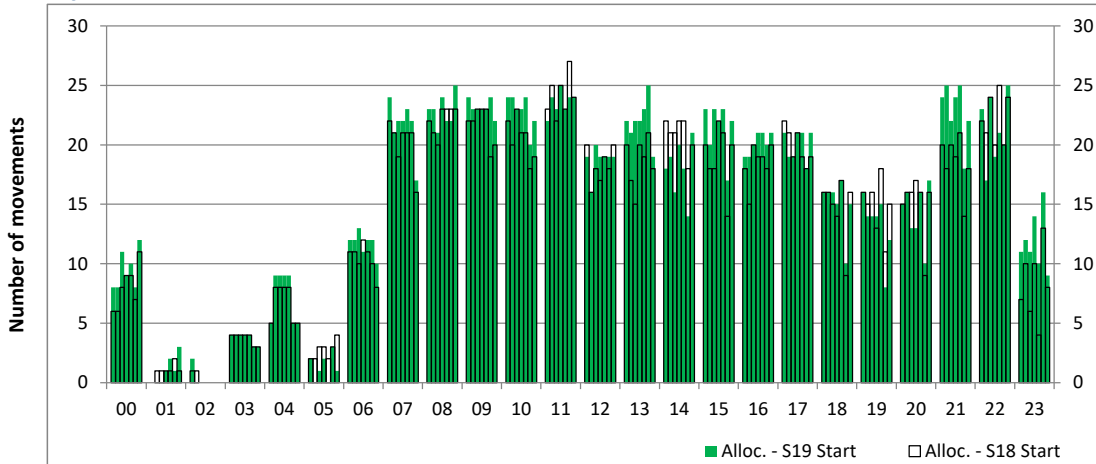
Peak Week - Runway Allocation Comparison

Comparison of S19 Start vs. S18 Start



Hourly Arrival Allocation

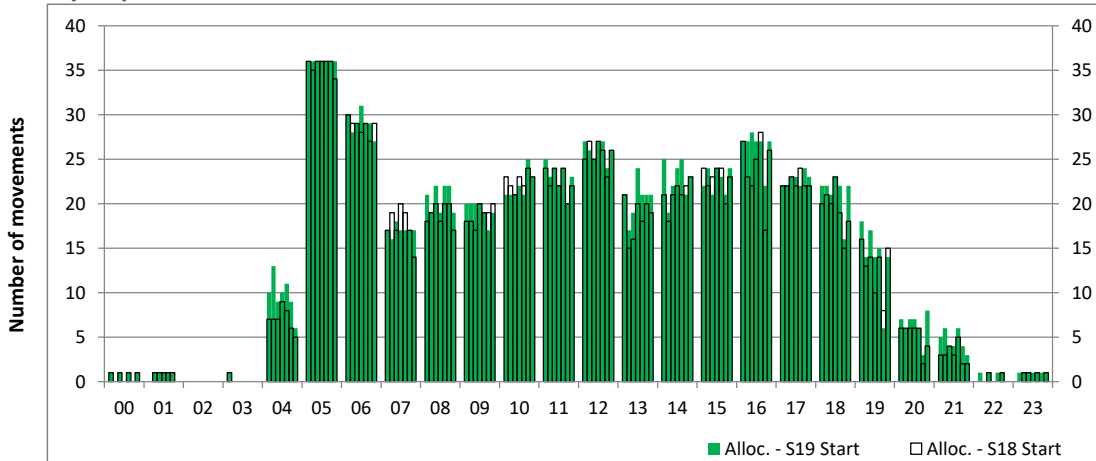
Time: UTC



Hour of day (24 hour format)

Hourly Departure Allocation

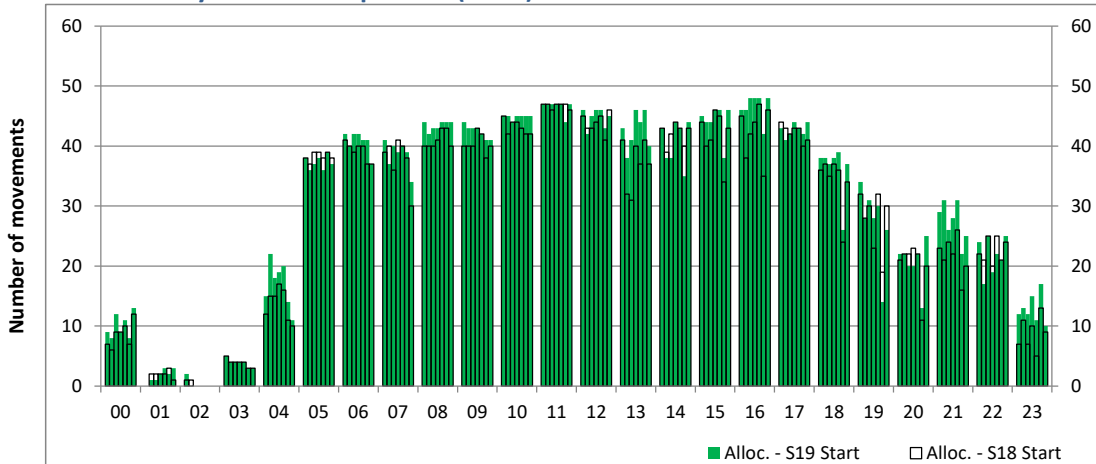
Time: UTC



Hour of day (24 hour format)

Combined Hourly Arrival & Departure (Total) Allocation

Time: UTC



Hour of day (24 hour format)

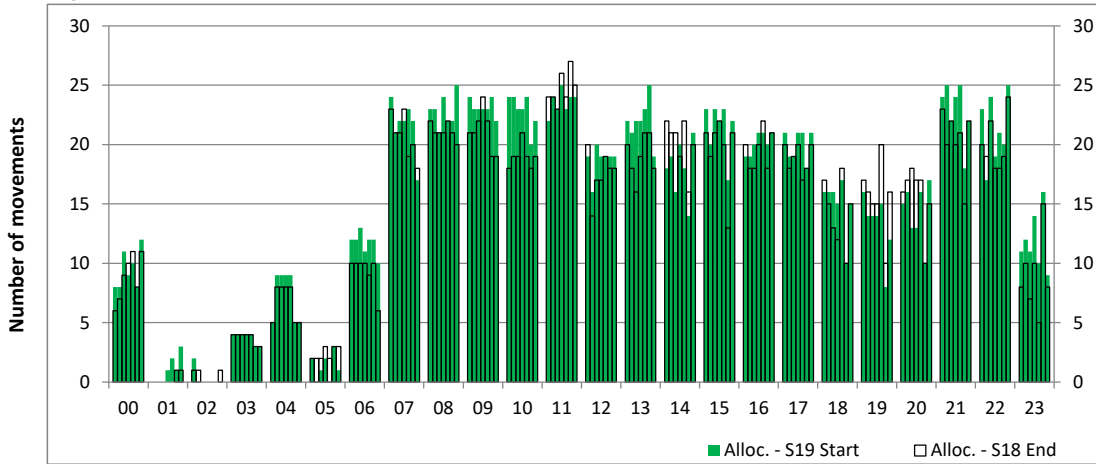
Peak Week - Runway Allocation Comparison

Comparison of S19 Start vs. S18 End



Hourly Arrival Allocation

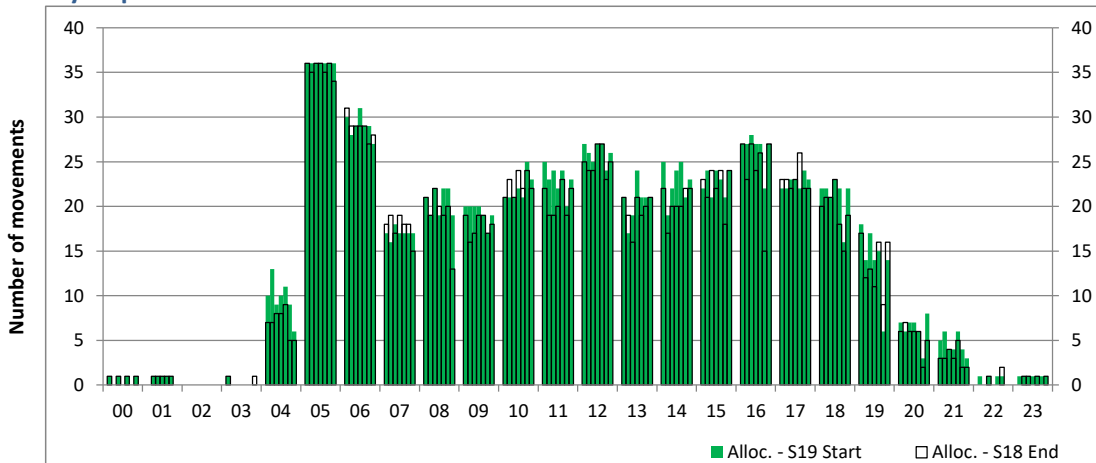
Time: UTC



Hour of day (24 hour format)

Hourly Departure Allocation

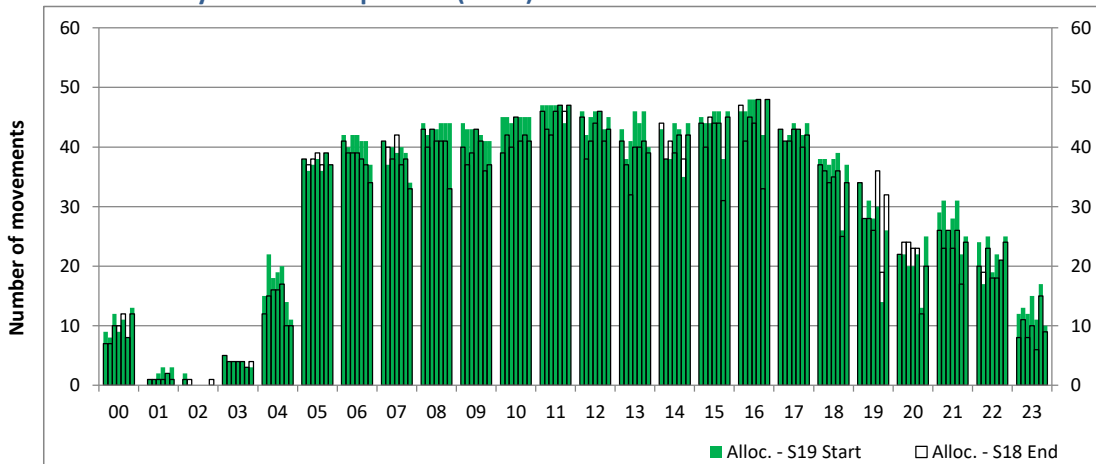
Time: UTC



Hour of day (24 hour format)

Combined Hourly Arrival & Departure (Total) Allocation

Time: UTC



Hour of day (24 hour format)

Peak Week - Passengers Histogram

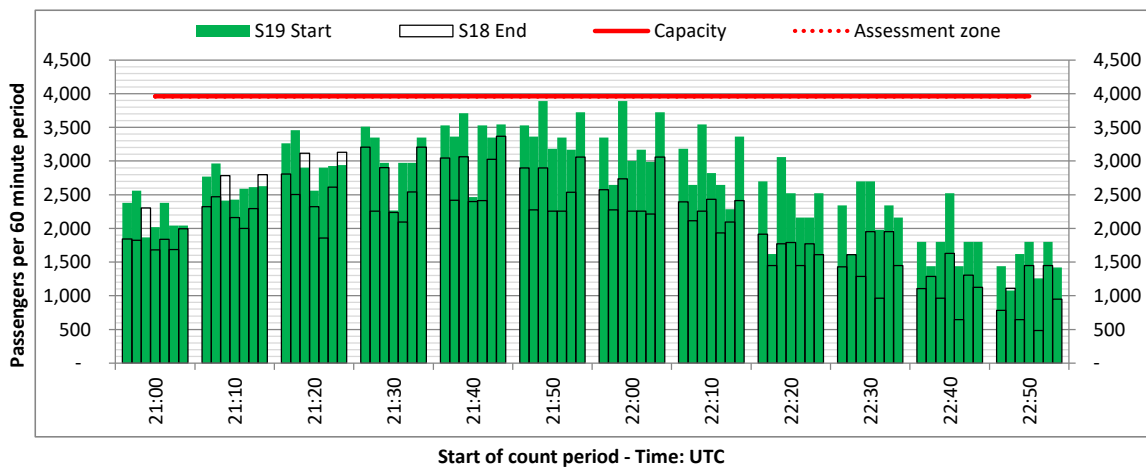
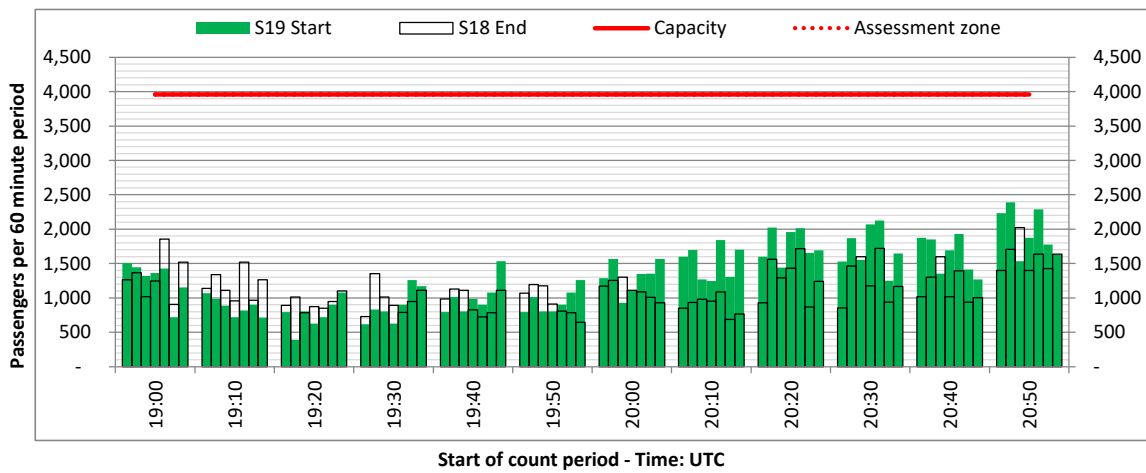
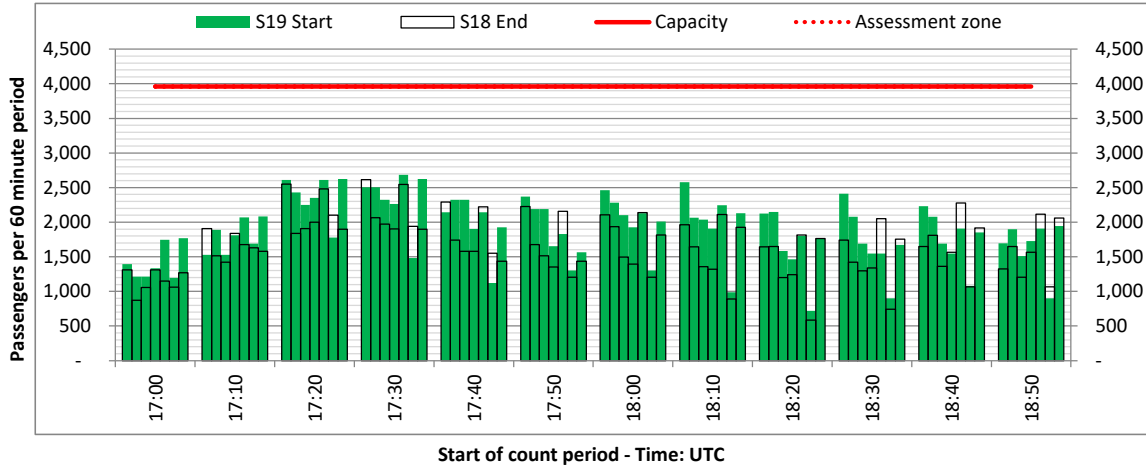
ARRIVAL - 60 minute count rolling every 10 mins (T60/10)



Terminals: 1

Operators: All Operators

Days: 1234567



Peak Week - Passengers Histogram

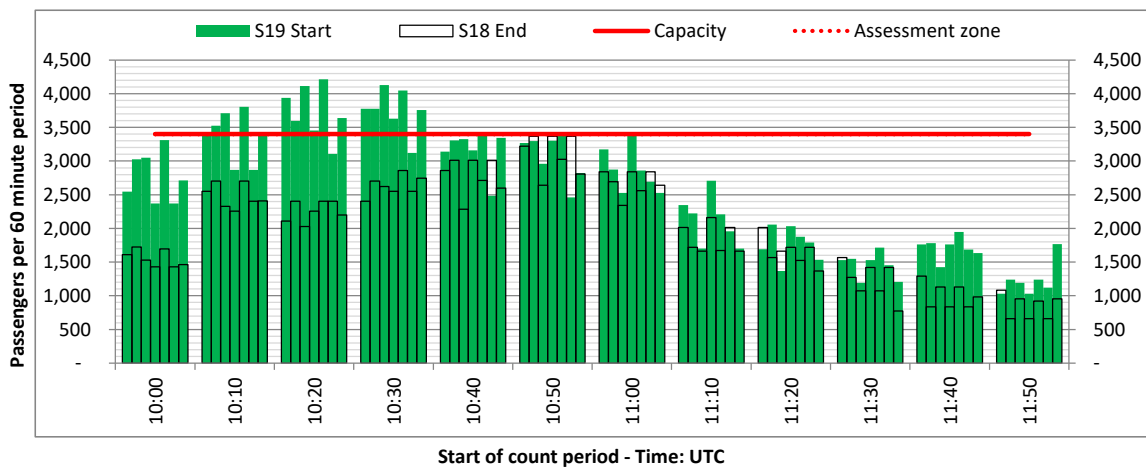
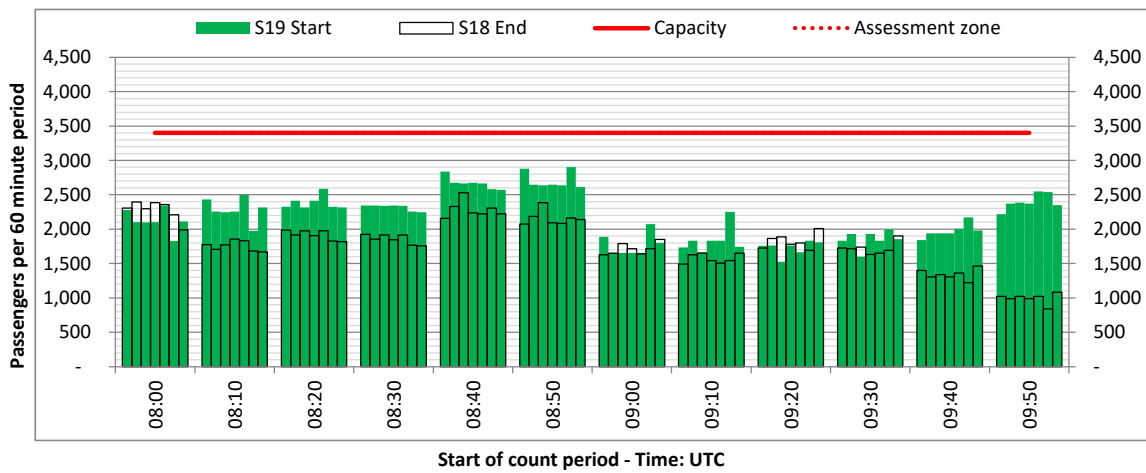
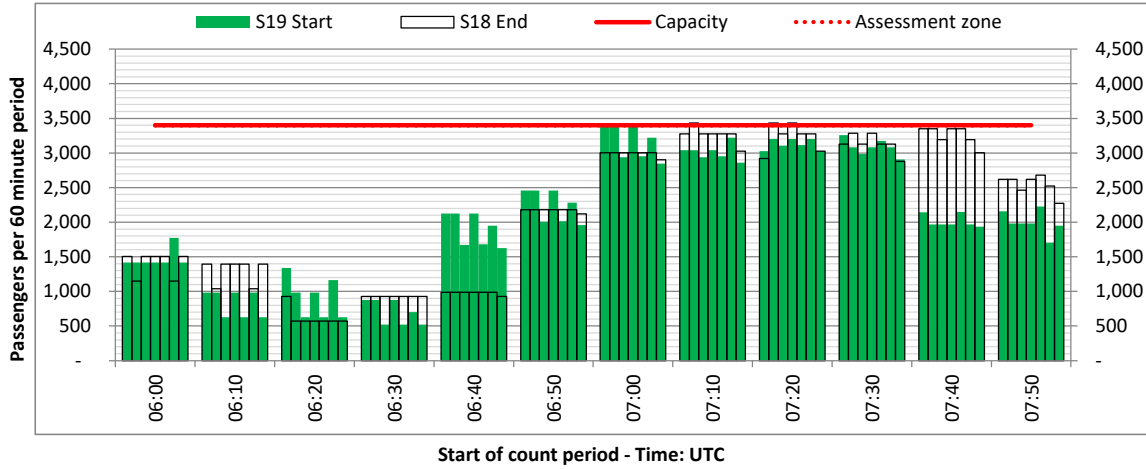
ARRIVAL - 60 minute count rolling every 10 mins (T60/10)



Terminals: 2

Operators: All Operators

Days: 1234567



Peak Week - Passengers Histogram

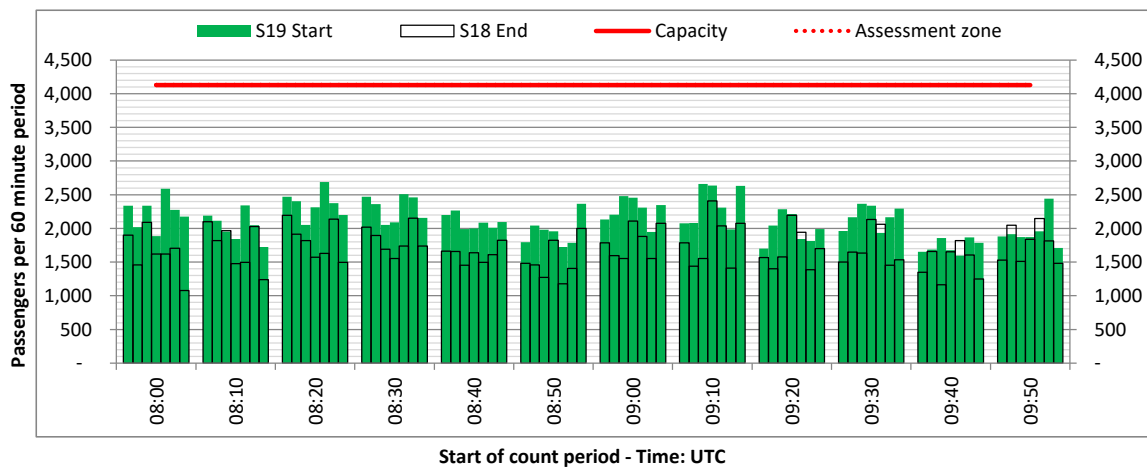
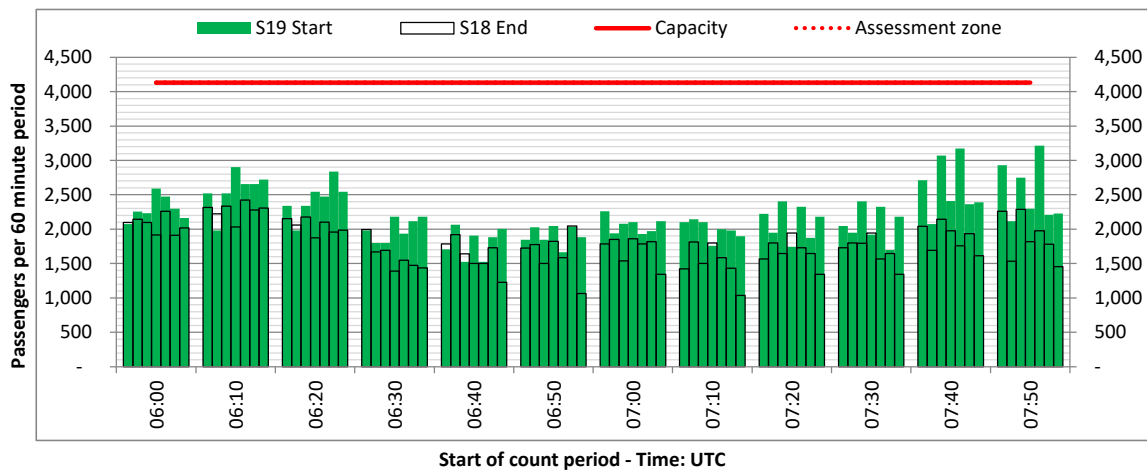
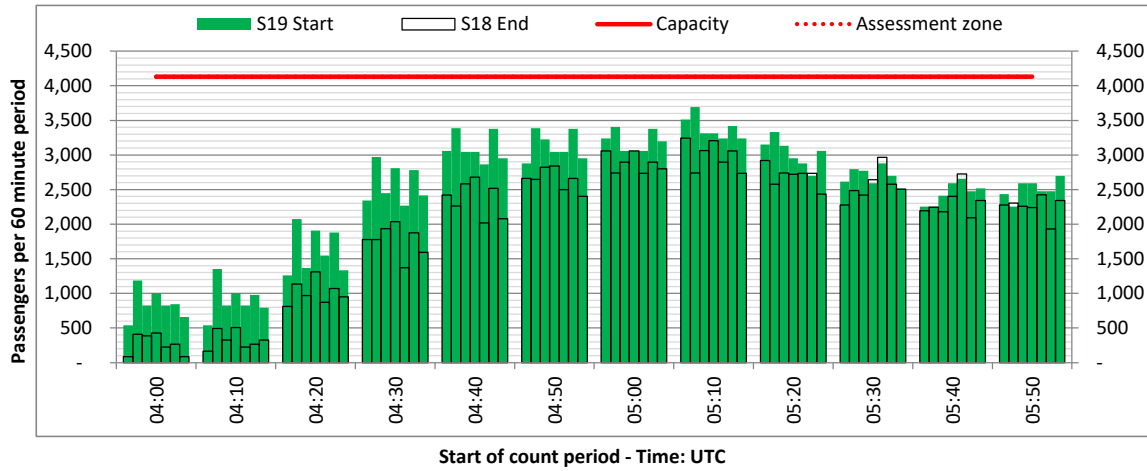
DEPARTURE - 60 minute count rolling every 10 mins (T60/10)



Terminals: 1

Operators: All Operators

Days: 1234567



Peak Week - Passengers Histogram

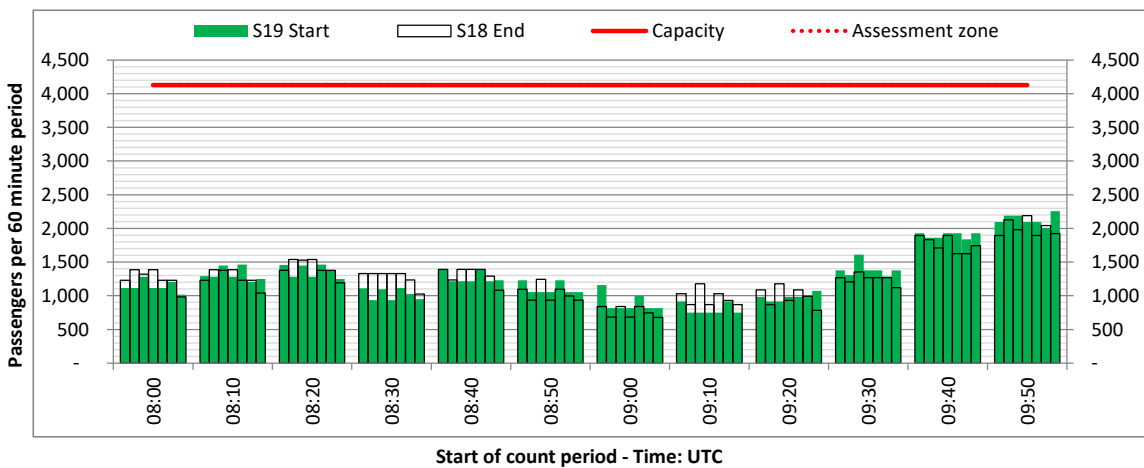
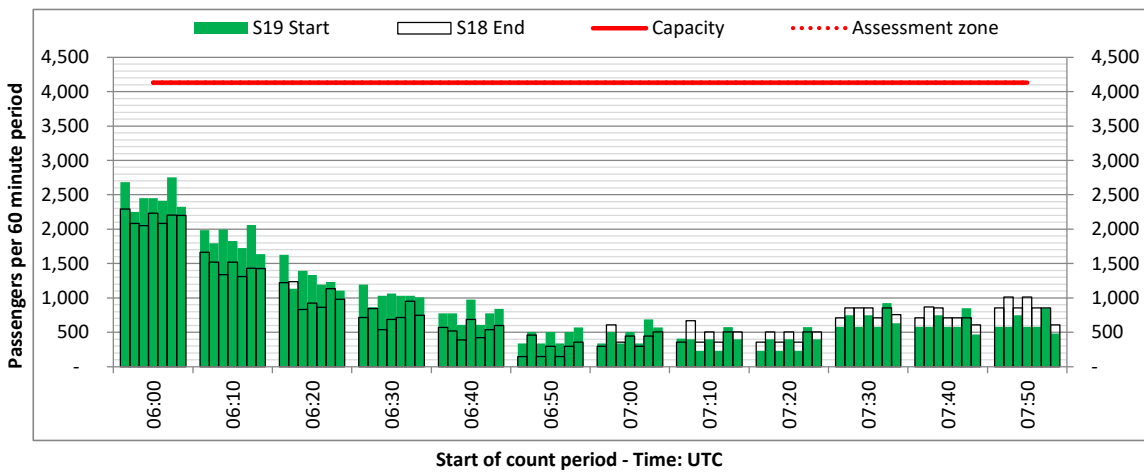
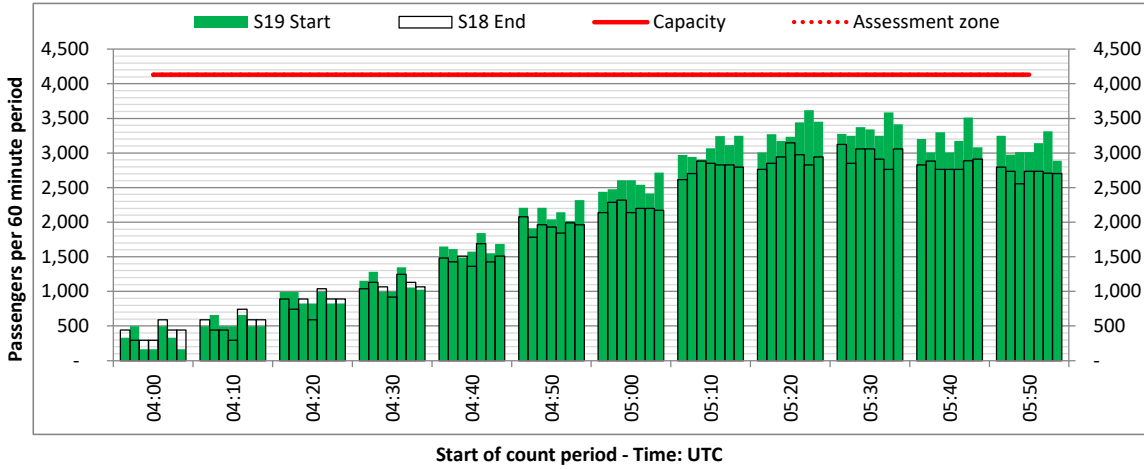
DEPARTURE - 60 minute count rolling every 10 mins (T60/10)



Terminals: 2

Operators: All Operators

Days: 1234567



Air Transport Movement (ATM)	Any aircraft movement which is either a scheduled or chartered passenger or cargo flight.
Common Travel Area (CTA)	Origin or Destination is in Republic of Ireland or the Channel Islands.
Demand	Unconstrained demand before any schedule adjustments have been made.
"Fill-in"	These are gaps in a historic series of slots which the carrier requests to "Fill-in" at Initial Submissions - Fill-ins will be recognisably part of the historic series and will have the same flight details to qualify as a "Fill-in".
Hist (SHL)	Snapshot of historic schedule rolled over from end of the previous equivalent season - as advised to airlines in the SHLs.
ICAO Size A	Aircraft with wingspan between 0.00m - 14.99m.
ICAO Size B	Aircraft with wingspan between 15.00m - 23.99m.
ICAO Size C	Aircraft with wingspan between 24.00m - 35.99m.
ICAO Size D	Aircraft with wingspan between 36.00m - 51.99m.
ICAO Size E	Aircraft with wingspan between 52.00m - 64.99m.
ICAO Size F	Aircraft with wingspan between 65.00m - 80.00m.
Init Coord	Snapshot of schedule immediately after Initial Coordination is completed - as advised to airlines in the SALs.
Passenger Air Transport Movement (PATM)	Any aircraft movement which is either a scheduled or chartered passenger flight.
Start	Snapshot of schedule shortly before the start of the scheduling season (exact date given below where used).
Time: Local	Times shown are in LOCAL time for the airport/scheduling season.
Time: UTC	Times shown are in Universal Time Constant (UTC).

Data snapshot descriptions

S18 Start	S18 schedule as cleared on Thu 08-Mar-18.
S18 End	S18 schedule as cleared on Tue 29-Aug-17.
S19 Start	S19 schedule as cleared on Fri 15-Mar-19.
Peak Week	Peak week for S18 is Mon 03-Sep-18 to Sun 09-Sep-18. Peak week for S19 is Mon 12-Aug-19 to Sun 18-Aug-19.

For ACL use

	Airport-Season-Branch-Resource	From date	To date	Time
Full Season Rep 1	DUB-S18-SOS Report-Standard	Sun 25-Mar-2018	Sat 27-Oct-2018	UTC
Full Season Rep 2	DUB-S18-Live-Standard	Sun 25-Mar-2018	Sat 27-Oct-2018	UTC
Full Season Rep 3	DUB-S19-SOS Report-Standard	Sun 31-Mar-2019	Sat 26-Oct-2019	UTC
	Airport-Season-Branch-Resource	From date	To date	Time
Peak Week Rep 1	DUB-S18-SOS Report-Standard	Mon 03-Sep-2018	Sun 09-Sep-2018	UTC
Peak Week Rep 2	DUB-S18-Live-Standard	Mon 23-Jul-2018	Sun 29-Jul-2018	UTC
Peak Week Rep 3	DUB-S19-SOS Report-Standard	Mon 12-Aug-2019	Sun 18-Aug-2019	UTC