

Start of Season Report

Report Date: Tue 19-Mar-2019

Headlines

	S19 Start	vs. S18 Start	vs. S18 End
Total Air Transport Movements (Passenger & Freight)	41070	▼ -6.0%	▼ -5.1%
Total Passenger Air Transport Movements	41070	▼ -6.0%	▼ -5.1%
Total Passenger Air Transport Movement Seats	6950210	▲ 4.3%	▲ 5.0%
Average Seats per Passenger Air Transport Movement	169.23	▲ 10.9%	▲ 10.7%
Percentage of allocated slots cleared as requested (OK)	99%		

Contents

Page	Content
2	Runway Scheduling Limits
3	ATM Allocation by Operator (Full season and Peak Week Comparison)
4	Full Season - ATM Analysis
5	Full Season - PATM Seats Analysis
6	Full Season - Aircraft Size Analysis
7	Full Season - Seasonality
8	Peak Week - Hourly Runway Allocation
9	Peak Week - Hourly Runway Allocation Comparison (S19 Start vs. S18 End)
10	Peak Week Histogram - Arrival Passengers (T60/15) - 1I - All Operators
11	Peak Week Histogram - Arrival Passengers (T30/15) - 1I - All Operators
12	Peak Week Histogram - Arrival Passengers (T60/15) - 1D - All Operators
13	Peak Week Histogram - Departure Passengers (T60/15) - All Terminals - All Operators
14	Glossary

S18 scheduling season runs from Sun 25-Mar-2018 to Sat 27-Oct-2018 (217 days).

S19 scheduling season runs from Sun 31-Mar-2019 to Sat 26-Oct-2019 (210 days).

S18 full season data is adjusted by a factor of 0.96774 in order to directly compare against S19 full season data.

Disclaimer

No warranty whether expressed or implied as to the completeness, accuracy, fitness for purpose, or satisfactory quality is given by ACL regarding the information in this report, which is provided by third parties. Accordingly, ACL excludes all liability with regard to such data.

The contents of this report may not be reproduced without the written consent of ACL.

Air Transport Movement Allocation by Operator

Comparison between S18 End vs. S19 Start



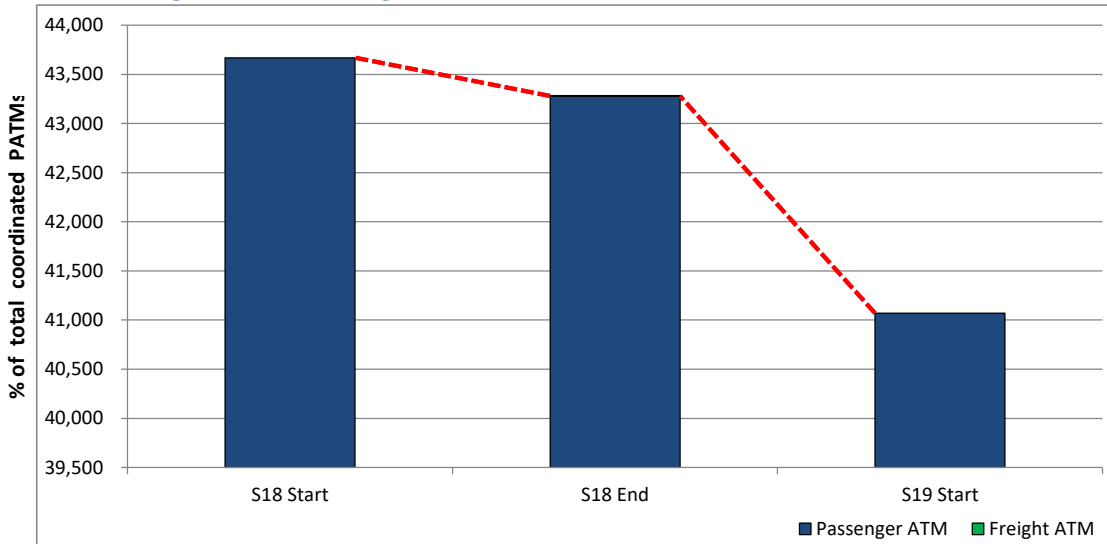
Operator	FULL SEASON ALLOCATION								PEAK WEEK ALLOCATION							
	S18 ATMs	S19 ATMs	+/- change	S19 Rank	S18 Seats	S19 Seats	+/- change	S19 Rank	S18 ATMs	S19 ATMs	+/- change	S19 Rank	S18 Seats	S19 Seats	+/- change	S19 Rank
Aer Lingus	1,676	1,680	4	5	120,654	120,960	306	7	60	56	-4	5	4,320	4,032	-288	7
Aero4M	2	-	-2	24	95	-	-95	23	-	-	0	18	-	-	0	17
Air Malta	48	48	0	15	8,686	8,640	-46	14	2	2	0	15	360	360	0	15
Aurigny Air Services	420	420	0	11	28,335	30,048	1,713	10	14	14	0	11	912	1,008	96	11
Austrian Airlines	7	1	-6	21	1,063	144	-919	20	-	-	0	18	-	-	0	17
Avanti Air	2	-	-2	24	194	-	-194	23	-	-	0	18	-	-	0	17
Balkan Holidays Air Ltd	37	40	3	17	6,619	7,200	581	16	2	2	0	15	360	360	0	15
Blue Islands	-	1	1	21	-	68	68	21	-	-	0	18	-	-	0	17
BMI Regional	4,648	-	-4,648	24	220,880	-	-220,880	23	167	-	-167	18	7,919	-	-7,919	17
British Airways	195	-	-195	24	18,083	-	-18,083	23	8	-	-8	18	740	-	-740	17
Brussels Airlines	-	610	610	9	-	29,890	29,890	11	-	22	22	8	-	1,078	1,078	10
City Airline	2	-	-2	24	337	-	-337	23	-	-	0	18	-	-	0	17
Eastern Airways	841	-	-841	24	42,048	-	-42,048	23	28	-	-28	18	1,400	-	-1,400	17
EasyJet	20,268	20,714	446	1	3,522,176	3,750,774	228,598	1	696	708	12	1	120,708	128,118	7,410	1
EasyJet Europe GmbH	-	720	720	8	-	129,240	129,240	6	-	24	24	7	-	4,320	4,320	6
Enter Air	18	8	-10	18	3,475	1,512	-1,963	17	-	-	0	18	-	-	0	17
Flybe	475	750	275	7	31,752	48,464	16,712	8	16	18	2	10	1,128	1,264	136	9
Freebird Airlines	35	76	41	14	6,271	13,680	7,409	13	2	4	2	14	360	720	360	12
GA	1	-	-1	24	-	-	0	23	-	-	0	18	-	-	0	17
Jota Aviation	-	4	4	19	-	380	380	19	-	-	0	18	-	-	0	17
KLM Royal Dutch Airlines	1,621	1,666	45	6	159,728	165,436	5,708	5	56	56	0	5	5,576	5,576	0	5
Loganair	4	420	416	11	194	20,580	20,386	12	-	14	14	11	-	686	686	13
Maleth-Aero	2	-	-2	24	95	-	-95	23	-	-	0	18	-	-	0	17
Neos	36	44	8	16	6,660	8,184	1,524	15	2	2	0	15	372	372	0	14
ProAir Aviation GmbH	-	1	1	21	-	50	50	22	-	-	0	18	-	-	0	17
Ryanair	7,265	7,624	359	2	1,373,055	1,440,936	67,881	2	250	258	8	2	47,250	48,762	1,512	2
Thomas Cook (UK)	2,003	2,334	331	4	414,039	506,040	92,001	4	78	86	8	4	16,040	18,920	2,880	4
Titan Airways	3	3	0	20	377	572	195	18	-	-	0	18	-	-	0	17
TUI Airways	2,923	3,150	227	3	623,188	632,732	9,544	3	124	128	4	3	26,180	25,524	-656	3
VICKERS LTD	600	600	0	10	-	-	0	23	20	20	0	9	-	-	0	17
Vistajet Canada	1	-	-1	24	15	-	-15	23	-	-	0	18	-	-	0	17
Wizz Air	149	156	7	13	28,374	34,680	6,306	9	6	6	0	13	1,080	1,380	300	8
TOTAL	43,281	41,070	-2,211		6,616,394	6,950,210	333,816		1,531	1,420	-111		234,705	242,480	7,775	

Operators with 0 'ATMs' in both S18 End & S19 Start schedules are included in the table due to appearing in the S18 Start schedule (either with/without allocated slots).

Full Season - ATM Analysis

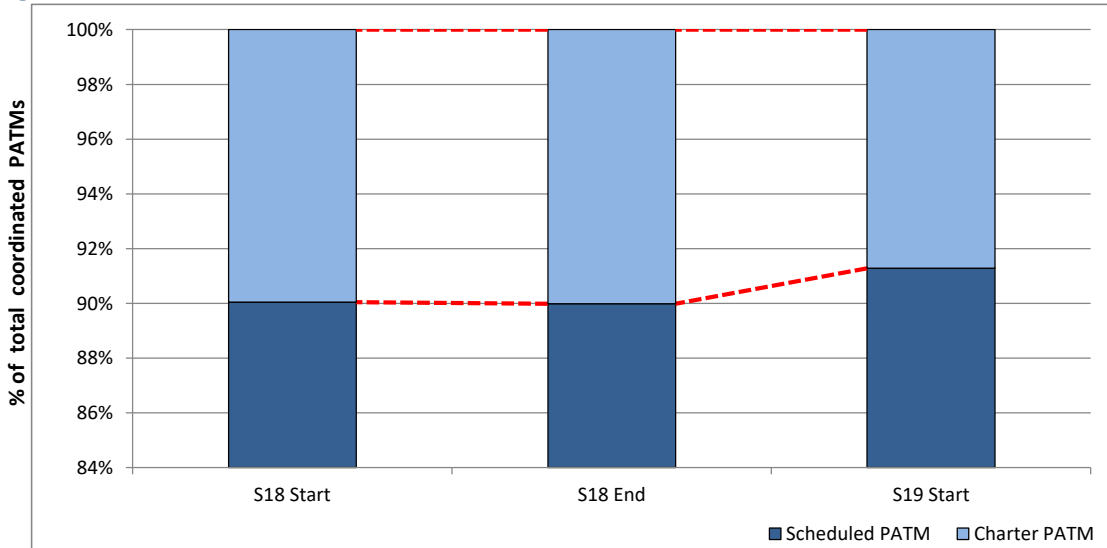


Total ATMs: Passenger ATMs vs. Freight ATMs



Schedule Snapshot

Passenger ATMs: Scheduled vs. Charter

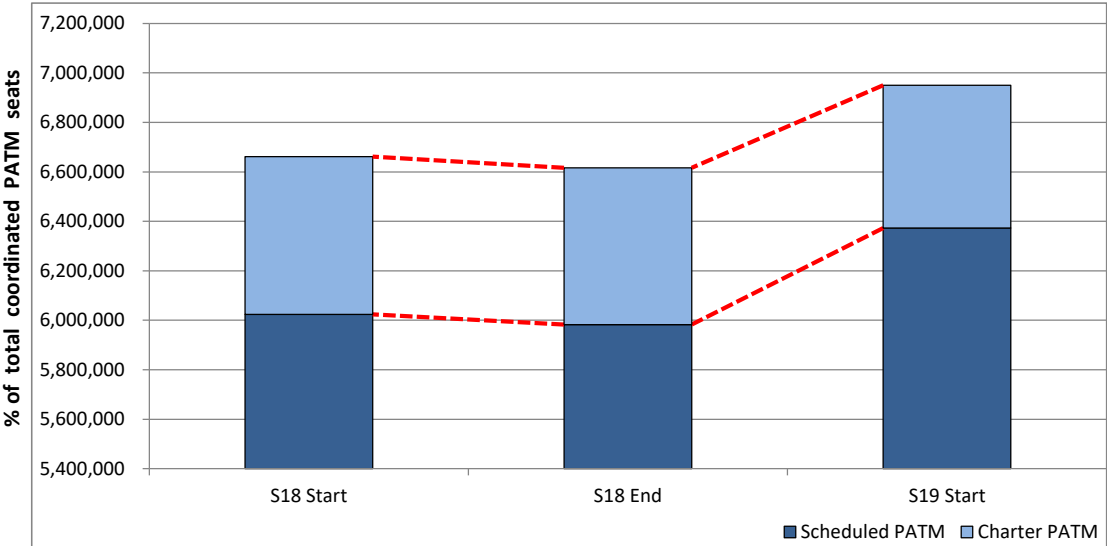


Schedule Snapshot

Full Season - PATM Seats Analysis

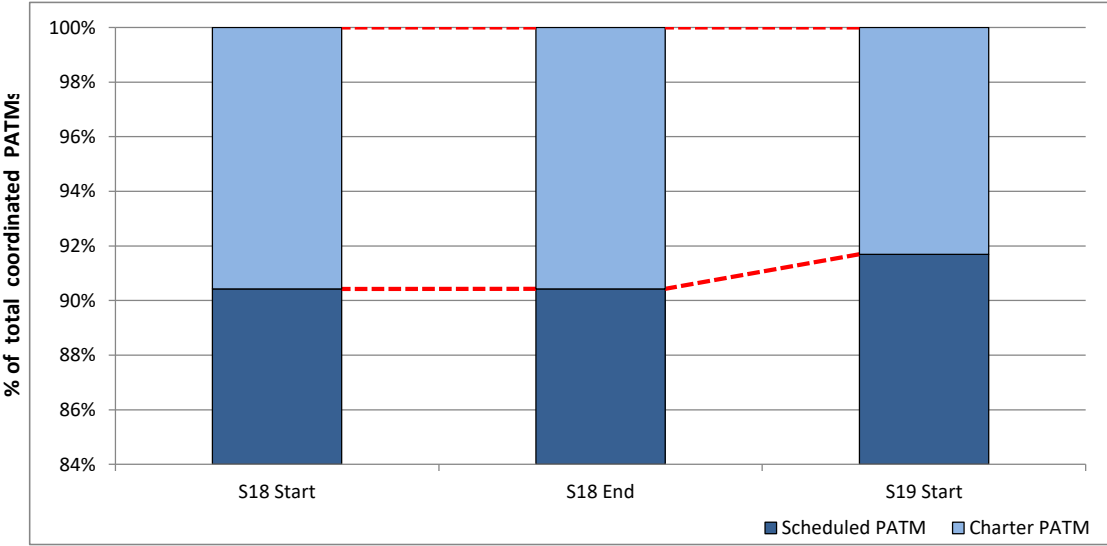


Total Passenger ATM seats: Scheduled vs. Charter



Schedule Snapshot

Passenger ATM seats: Scheduled vs. Charter

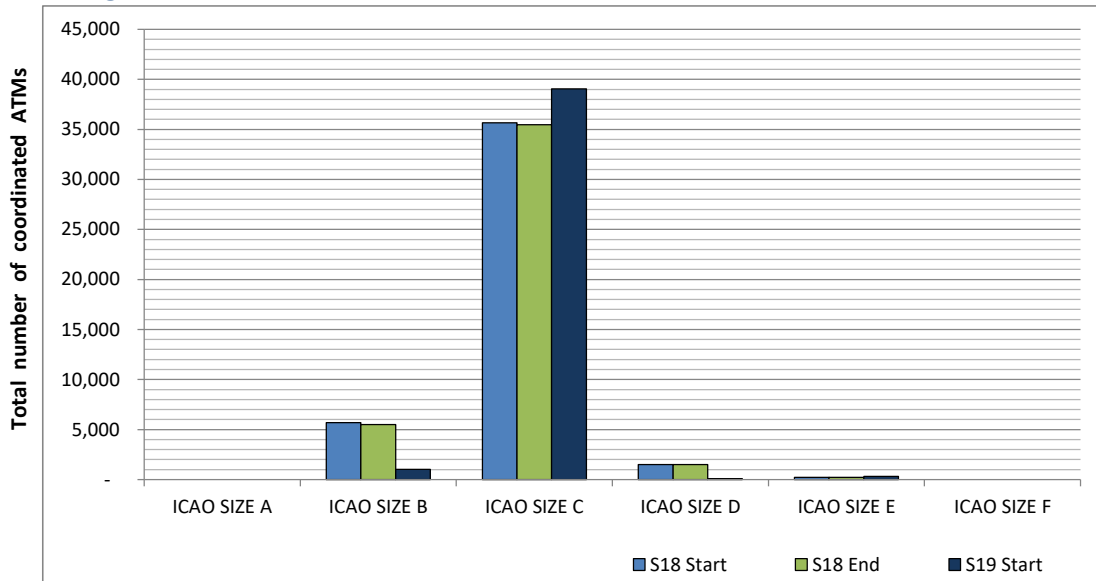


Schedule Snapshot

Full Season - Aircraft Size Analysis

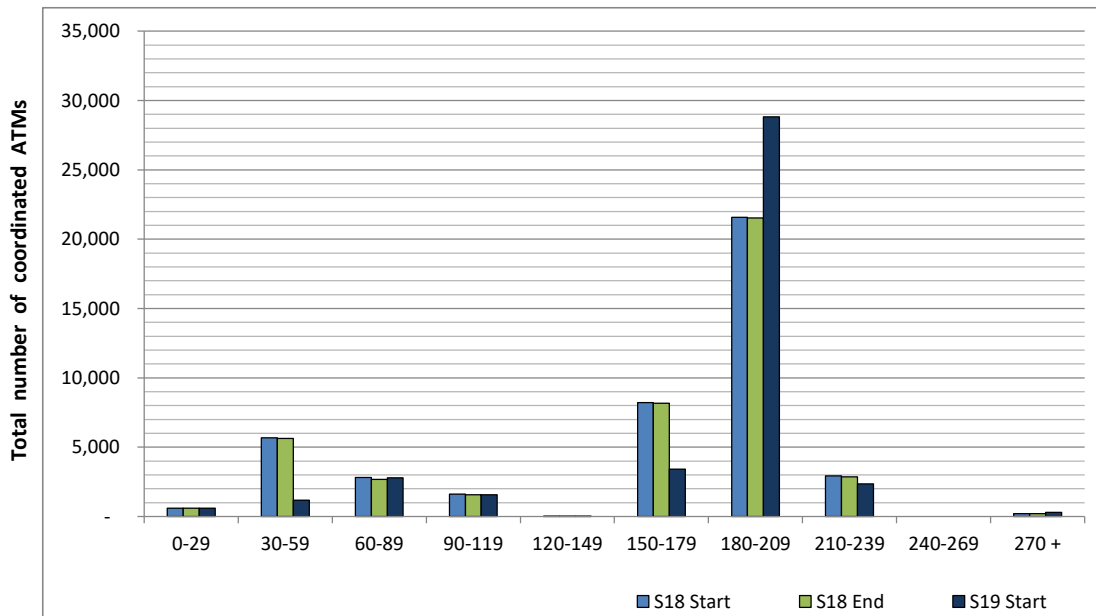


ICAO size designation



Note: See Glossary for definitions of ICAO SIZE groupings

Air Transport Movement seat distribution

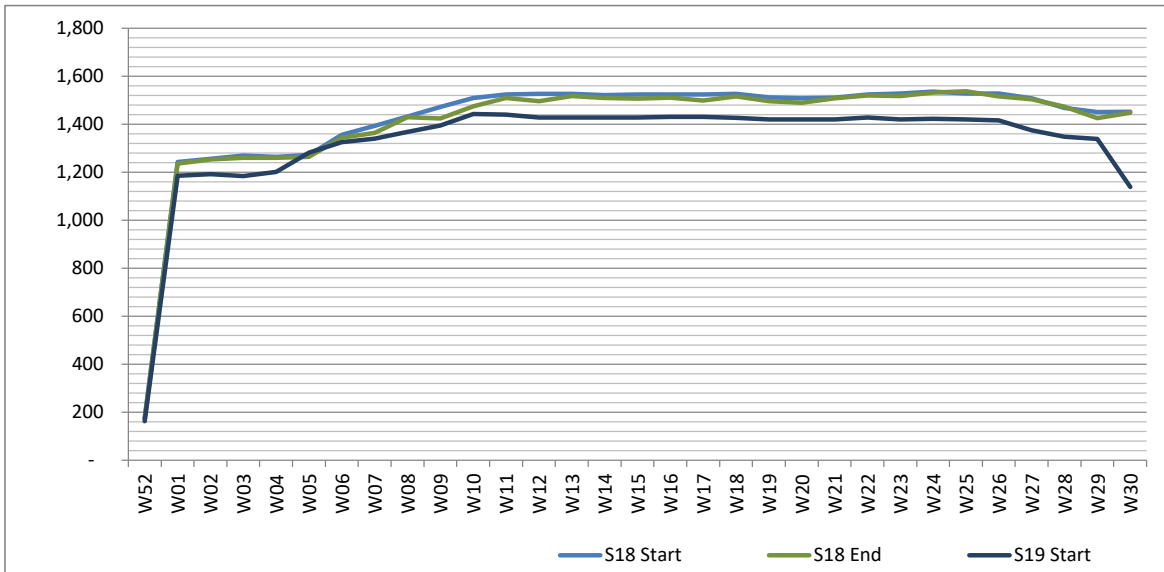


Note: FREIGHT-ONLY services with 0 seats are included in the first seat band '0-29'

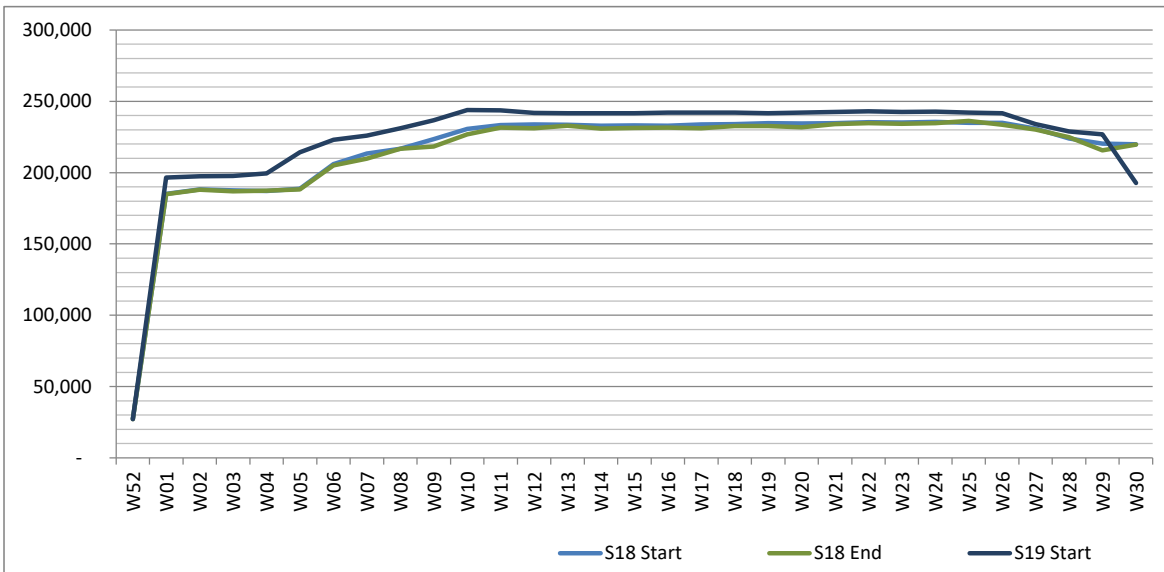
Full Season - Seasonality



Air Transport Movements by week of season



Air Transport Movement Seats by week of season



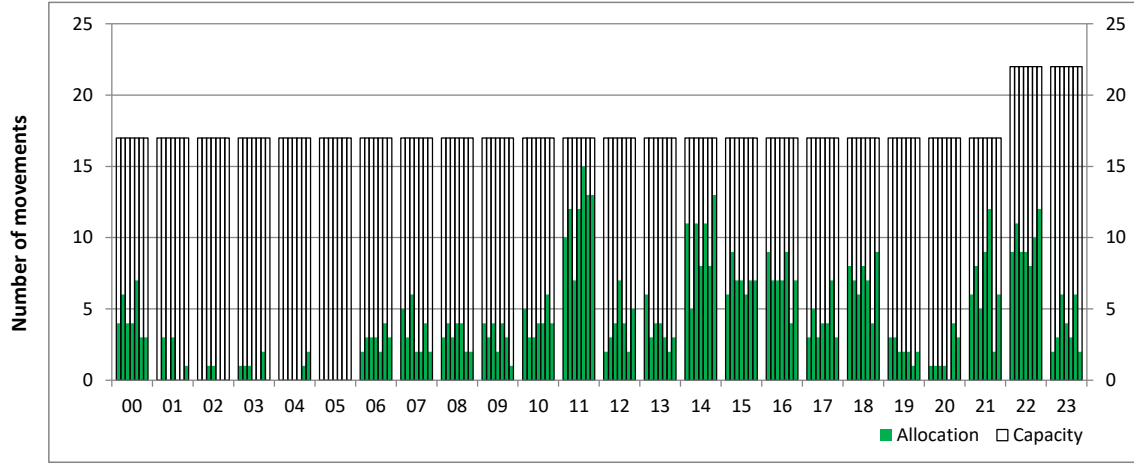
Peak Week - Hourly Runway Allocation

Schedule: S19 Start



Hourly Arrival Allocation

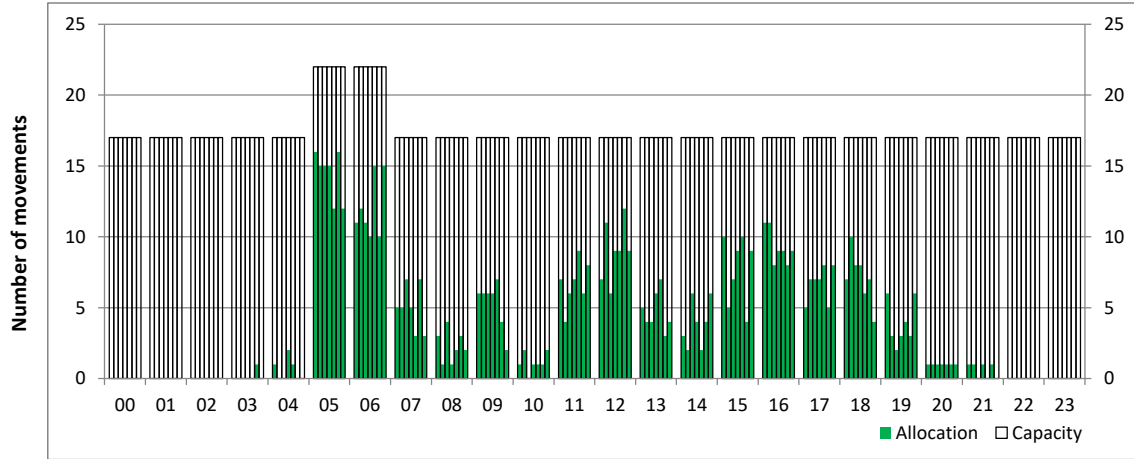
Time: UTC



Hour of day (24 hour format)

Hourly Departure Allocation

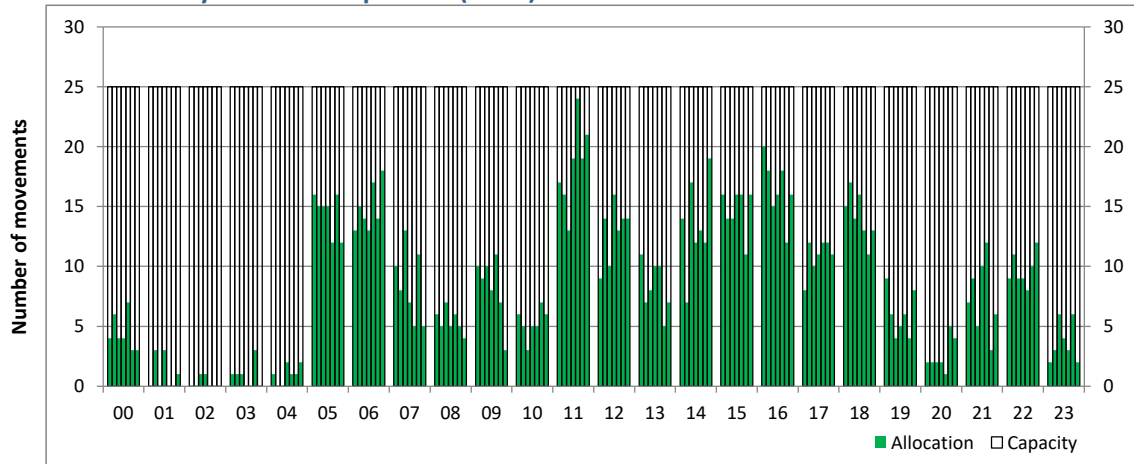
Time: UTC



Hour of day (24 hour format)

Combined Hourly Arrival & Departure (Total) Allocation

Time: UTC



Hour of day (24 hour format)

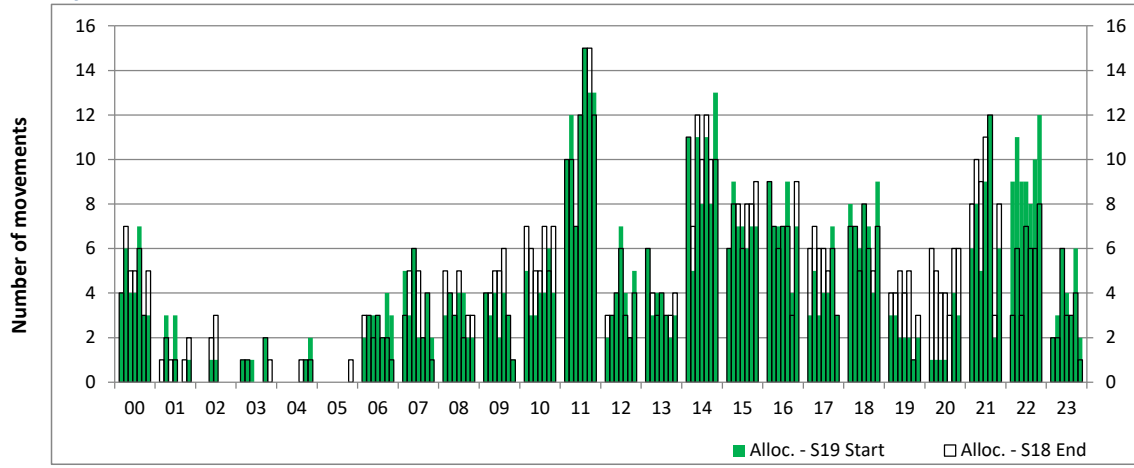
Peak Week - Runway Allocation Comparison

Comparison of S19 Start vs. S18 End



Hourly Arrival Allocation

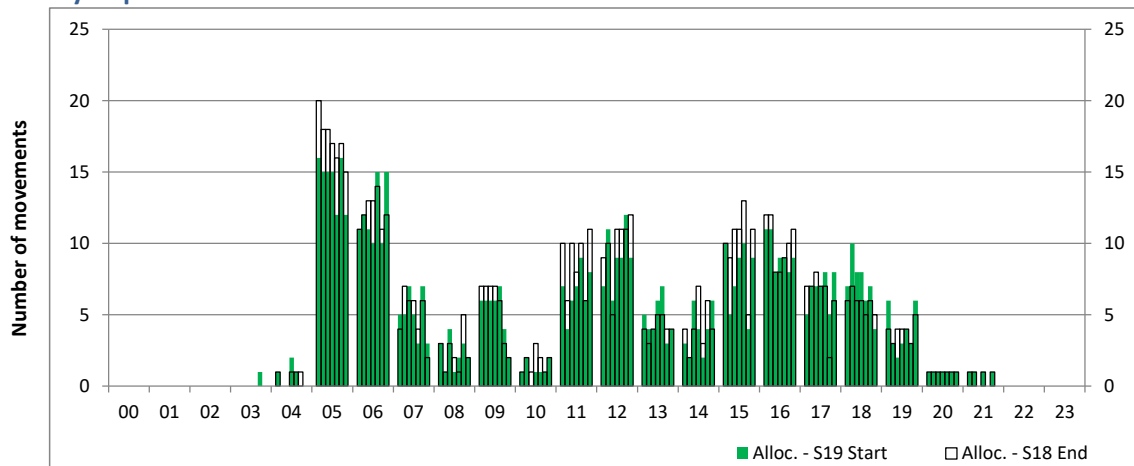
Time: UTC



Hour of day (24 hour format)

Hourly Departure Allocation

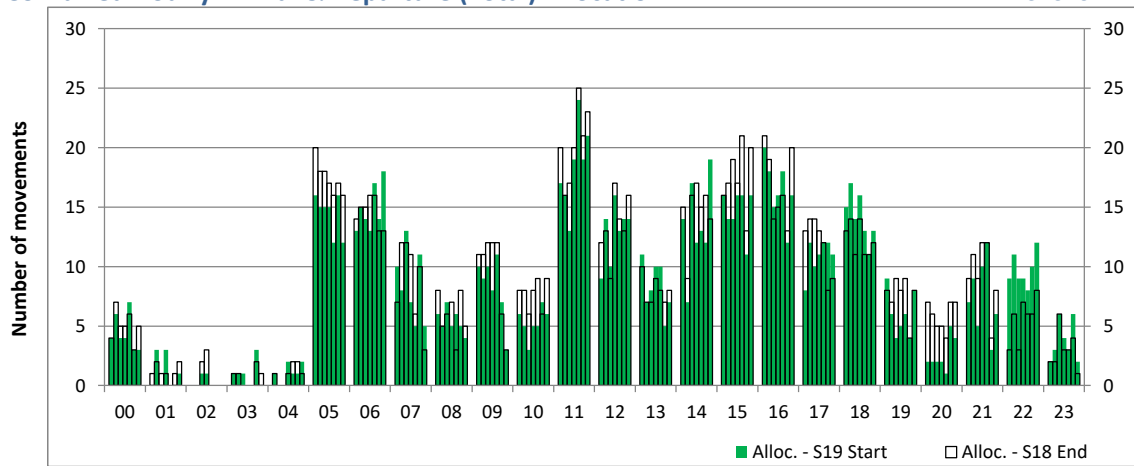
Time: UTC



Hour of day (24 hour format)

Combined Hourly Arrival & Departure (Total) Allocation

Time: UTC



Hour of day (24 hour format)

Peak Week - Passengers Histogram

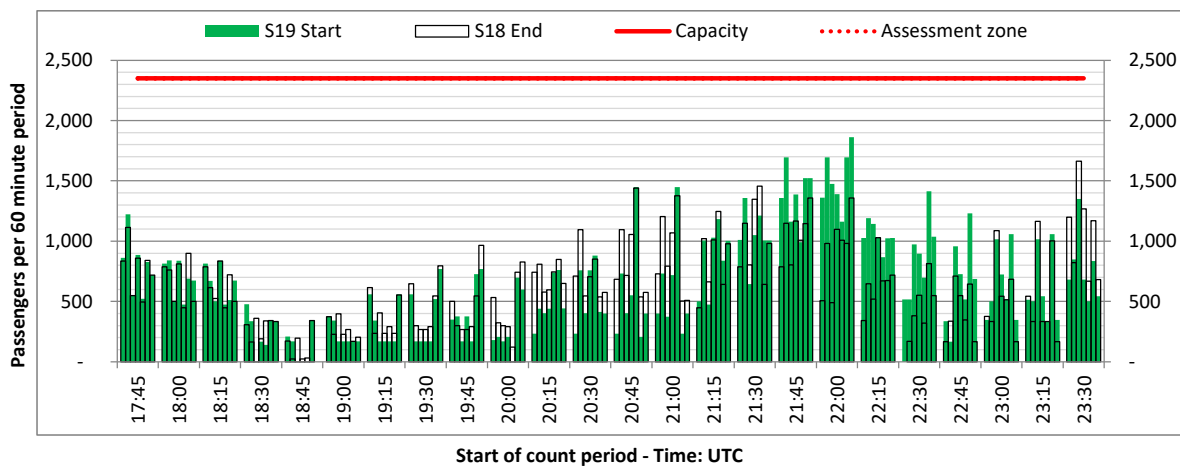
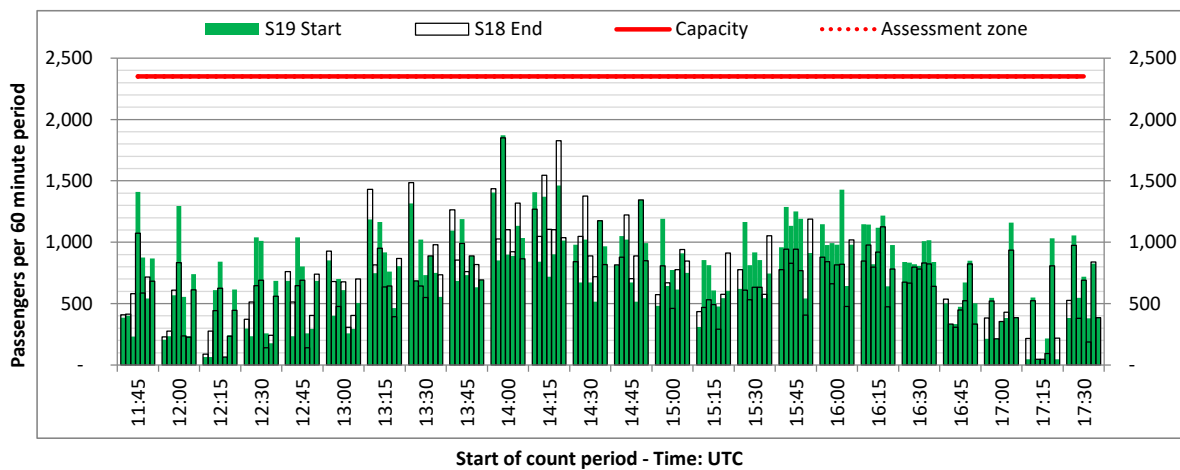
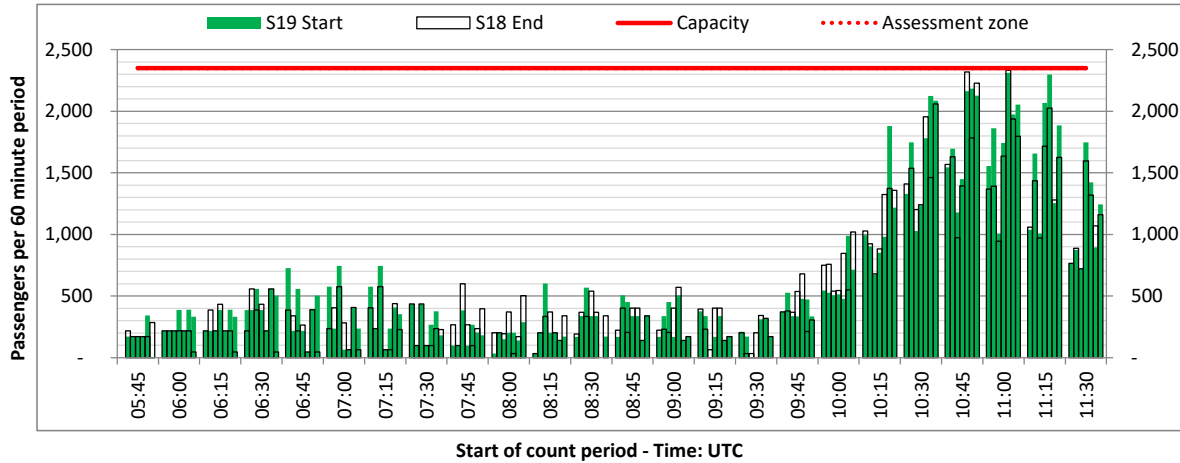
ARRIVAL - 60 minute count rolling every 15 mins (T60/15)



Terminals: 1I

Operators: All Operators

Days: 1234567



Peak Week - Passengers Histogram

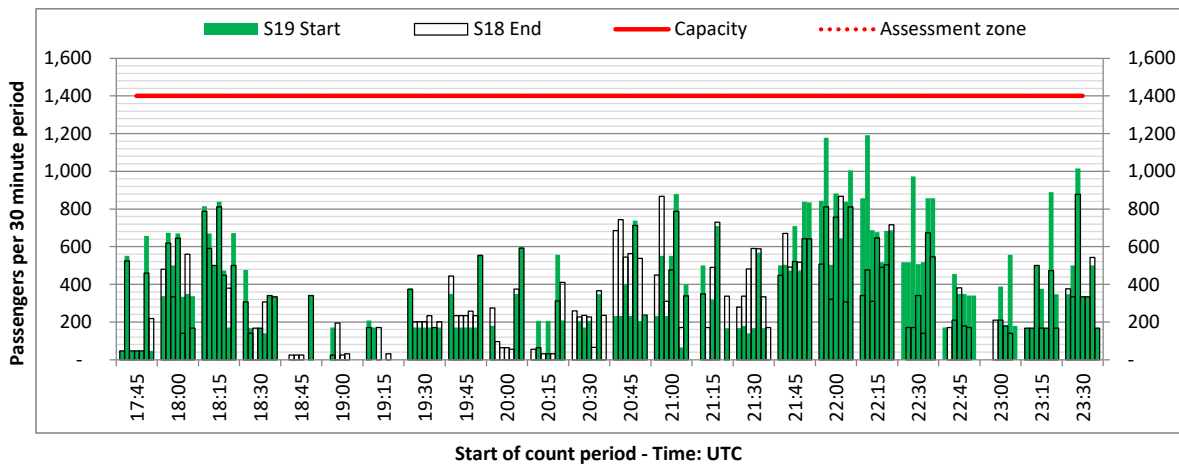
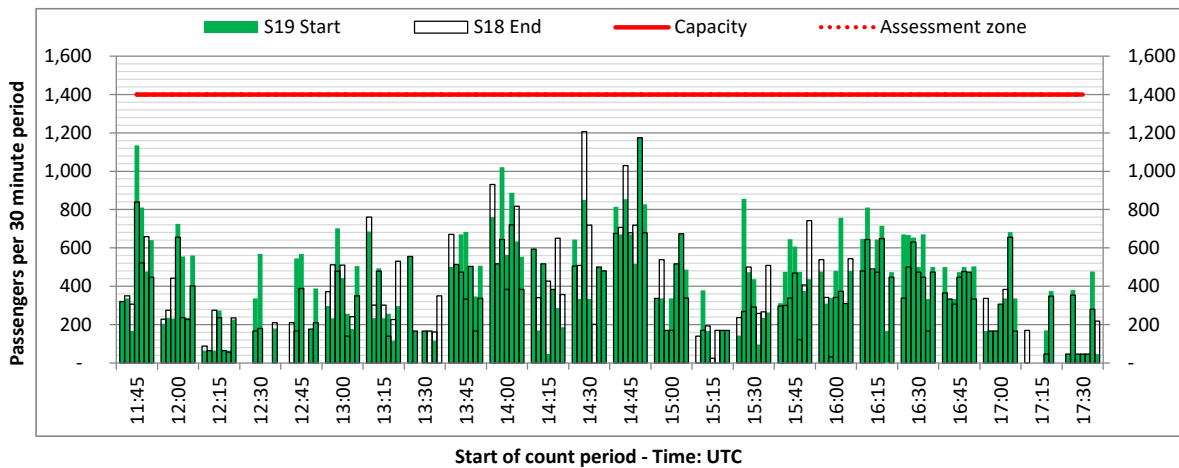
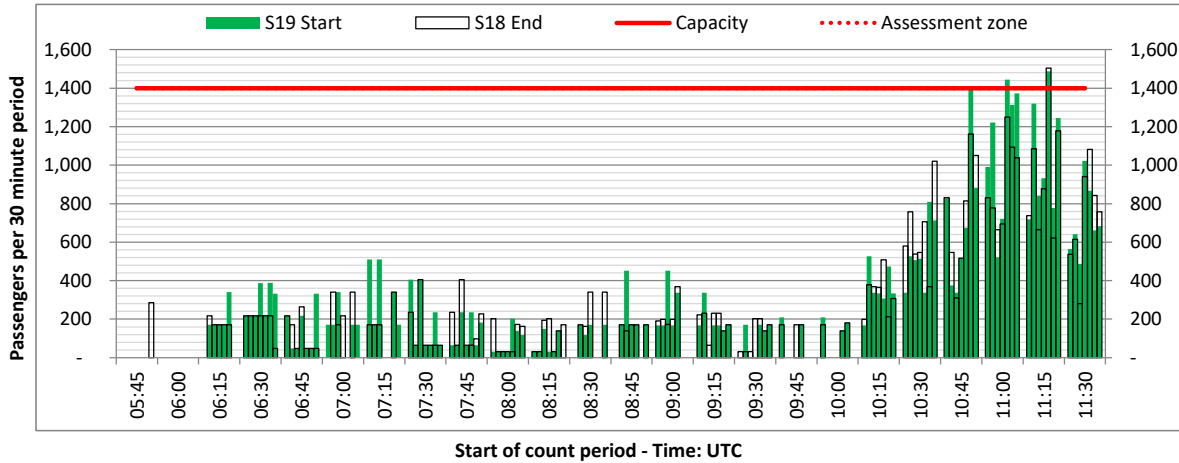
ARRIVAL - 30 minute count rolling every 15 mins (T30/15)



Terminals: 1I

Operators: All Operators

Days: 1234567



Peak Week - Passengers Histogram

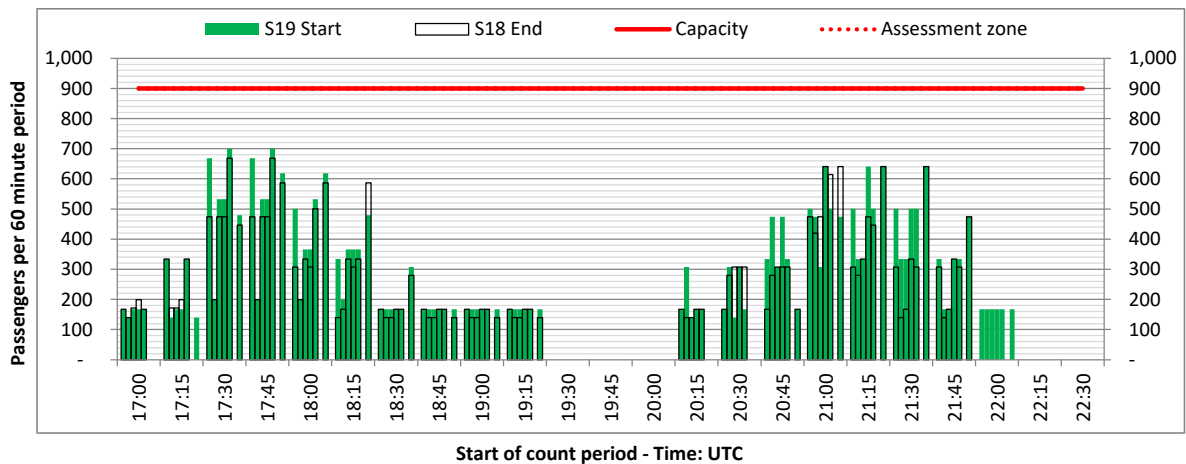
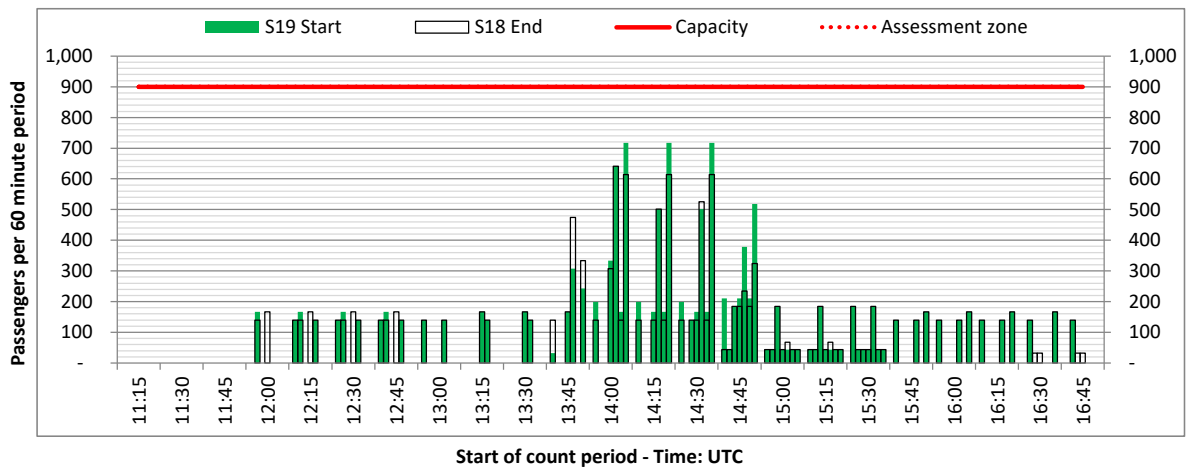
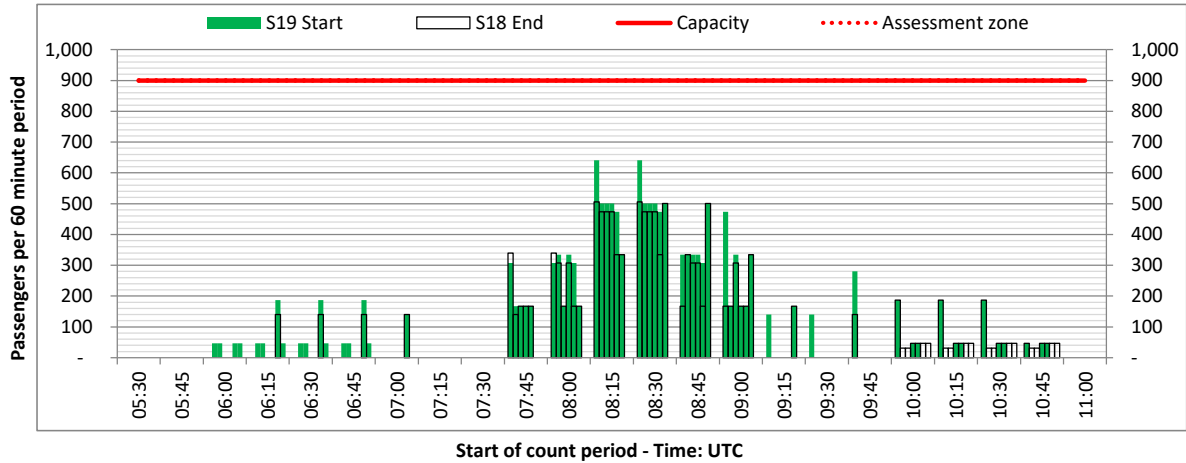
ARRIVAL - 60 minute count rolling every 15 mins (T60/15)



Terminals: 1D

Operators: All Operators

Days: 1234567



Peak Week - Passengers Histogram

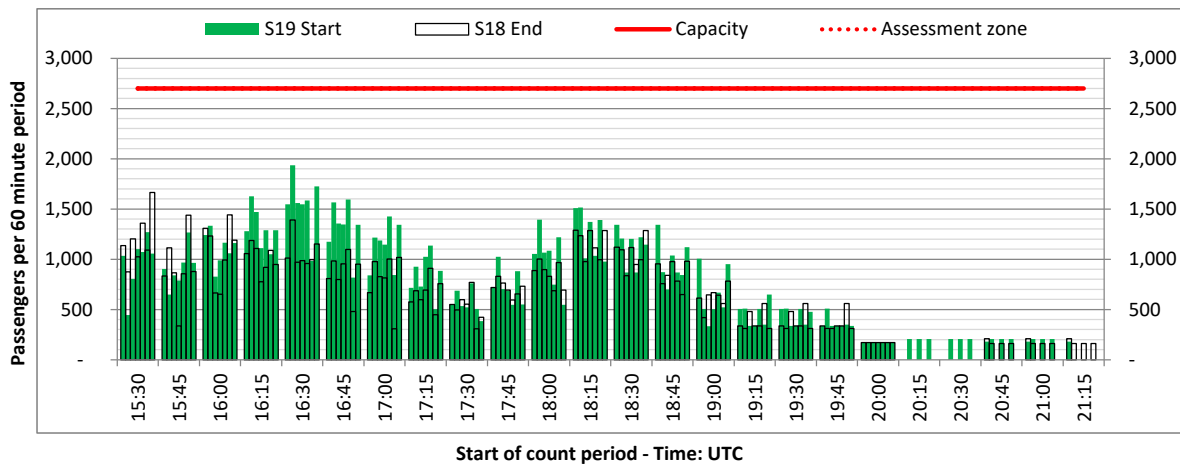
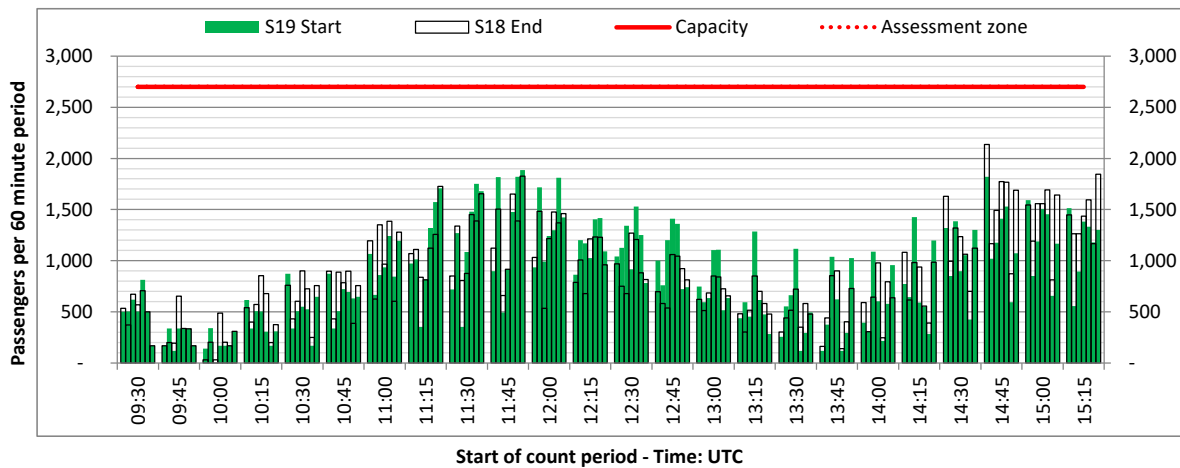
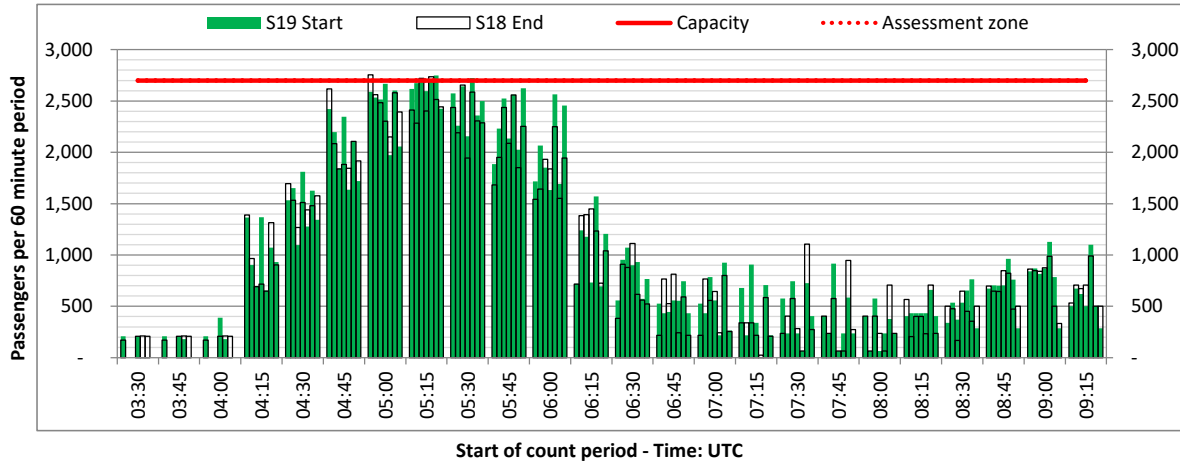
DEPARTURE - 60 minute count rolling every 15 mins (T60/15)



Terminals: All Terminals

Operators: All Operators

Days: 1234567



Air Transport Movement (ATM)	Any aircraft movement which is either a scheduled or chartered passenger or cargo flight.
Common Travel Area (CTA)	Origin or Destination is in Republic of Ireland or the Channel Islands.
Demand	Unconstrained demand before any schedule adjustments have been made.
"Fill-in"	These are gaps in a historic series of slots which the carrier requests to "Fill-in" at Initial Submissions - Fill-ins will be recognisably part of the historic series and will have the same flight details to qualify as a "Fill-in".
Hist (SHL)	Snapshot of historic schedule rolled over from end of the previous equivalent season - as advised to airlines in the SHLs.
ICAO Size A	Aircraft with wingspan between 0.00m - 14.99m.
ICAO Size B	Aircraft with wingspan between 15.00m - 23.99m.
ICAO Size C	Aircraft with wingspan between 24.00m - 35.99m.
ICAO Size D	Aircraft with wingspan between 36.00m - 51.99m.
ICAO Size E	Aircraft with wingspan between 52.00m - 64.99m.
ICAO Size F	Aircraft with wingspan between 65.00m - 80.00m.
Init Coord	Snapshot of schedule immediately after Initial Coordination is completed - as advised to airlines in the SALs.
Passenger Air Transport Movement (PATM)	Any aircraft movement which is either a scheduled or chartered passenger flight.
Start	Snapshot of schedule shortly before the start of the scheduling season (exact date given below where used).
Time: Local	Times shown are in LOCAL time for the airport/scheduling season.
Time: UTC	Times shown are in Universal Time Constant (UTC).

Data snapshot descriptions

S18 Start	S18 schedule as cleared on Sun 18-Mar-18.
S18 End	S18 schedule as cleared on Sun 17-Mar-19.
S19 Start	S19 schedule as cleared on Sun 17-Mar-19.
Peak Week	Peak week for S18 is Mon 03-Sep-18 to Sun 09-Sep-18. Peak week for S19 is Mon 02-Sep-19 to Sun 08-Sep-19.

For ACL use

	Airport-Season-Branch-Resource	From date	To date	Time
Full Season Rep 1	BRS-S18-SOS Report-Standard	Sun 25-Mar-2018	Sat 27-Oct-2018	UTC
Full Season Rep 2	BRS-S18-EOS Report-Standard	Sun 25-Mar-2018	Sat 27-Oct-2018	UTC
Full Season Rep 3	BRS-S19-SOS Report-Standard	Sun 31-Mar-2019	Sat 26-Oct-2019	UTC
	Airport-Season-Branch-Resource	From date	To date	Time
Peak Week Rep 1	BRS-S18-SOS Report-Standard	Mon 03-Sep-2018	Sun 09-Sep-2018	UTC
Peak Week Rep 2	BRS-S18-EOS Report-Standard	Mon 03-Sep-2018	Sun 09-Sep-2018	UTC
Peak Week Rep 3	BRS-S19-SOS Report-Standard	Mon 02-Sep-2019	Sun 08-Sep-2019	UTC