

Birmingham Airport (BHX)

Summer 2019 (S19)



Start of Season Report

Report Date: Mon 04-Mar-2019

Headlines

	S19 Start	vs. S18 Start	vs. S18 End
Total Air Transport Movements (Passenger & Freight)	68,434	▲ 2.2%	▲ 4.0%
Total Passenger Air Transport Movements	65,950	▲ 0.8%	▲ 3.3%
Total Passenger Air Transport Movement Seats	10,418,733	▲ 3.2%	▲ 7.4%
Average Seats per Passenger Air Transport Movement	158	▲ 2.3%	▲ 3.9%
Percentage of allocated slots cleared as requested (OK)	98.5%		

Contents

Page	Content
2	Runway Scheduling Limits
3	Coordinator's Report
4	ATM Allocation by Operator (Full season and Peak Week Comparison)
5	Peak Week - Allocation and Slot Adjustment Distribution by Operator
6	Significant Route Changes
7	Full Season - ATM Analysis
8	Full Season - PATM Seats Analysis
9	Full Season - Terminal Analysis
10	Full Season - Aircraft Size Analysis
11	Full Season - Seasonality
12	Peak Week - Hourly Runway Allocation
13	Peak Week - Hourly Runway Allocation Comparison (S19 Start vs. S18 Start)
14	Peak Week - Hourly Runway Allocation Comparison (S19 Start vs. S18 End)
15	Peak Week Histogram - Departure Passengers (T120/15) - All Terminals - All Operators
16	Peak Week Histogram - Departure Passengers (T60/15) - All Terminals - All Operators
17	Peak Week Histogram - Arrival Passengers (T60/15) - 11 - All Operators
18	Peak Week Histogram - Arrival Passengers (T30/15) - 11 - All Operators
19	Peak Week Histogram - Arrival Passengers (T30/15) - 21 - All Operators
20	Glossary

S18 scheduling season runs from Sun 25-Mar-2018 to Sat 27-Oct-2018 (217 days).

S19 scheduling season runs from Sun 31-Mar-2019 to Sat 26-Oct-2019 (210 days).

S18 full season data is adjusted by a factor of 0.96774 in order to directly compare against S19 full season data.

Disclaimer

No warranty whether expressed or implied as to the completeness, accuracy, fitness for purpose, or satisfactory quality is given by ACL regarding the information in this report, which is provided by third parties. Accordingly, ACL excludes all liability with regard to such data.

The contents of this report may not be reproduced without the written consent of ACL.

Coordinator's Report



Total demand	68,614	slots		
Total slots allocated	68,434	slots	99.74%	of total demand
Number of slots cleared OK	67,416	slots	98.51%	of total slots cleared

Slots adjusted (not OK) due to:

RUNWAY constraints	173	slots	17.0%	of total slots adjusted
TERMINAL constraints	817	slots	80.3%	of total slots adjusted
STAND constraints	-	slots	0.0%	of total slots adjusted
NIGHT constraints	-	slots	0.0%	of total slots adjusted
OTHER constraints	28	slots	2.8%	of total slots adjusted
ARR/DEP TURNAROUND feasibility	-	slots	0.0%	of total slots adjusted

Executive Summary

Jet2 have seen a 30% increase in the number of ATMs from S18, increasing by 1,925 to 8,322 in S19. TUI has seen ATMs increase by nearly 15% to 6,305 in S19. Flybe has seen a small decrease in ATMs of 1.2% while remaining the largest operator with 19,499 ATMs in S19.

S19 has seen a new carriers Air Arabia Maroc, Indigo & SpiceJet added to the schedule.

Runway Constraints

- R60 - hourly runway constraint.
- R15 - 15 minute runway constraint.

Terminal Constraints

- T60/15 - hourly departure terminal constraint that rolls every 15 minutes.
- T2H/15 - two hourly departure terminal constraint that rolls every 15 minutes.
- T30/15 - half hourly arrival terminal constraint that rolls every 15 minutes (T1 & T2 INT and CTA).
- T60/15 - hourly arrival terminal constraint that rolls every 15 minutes (T1 DOMESTIC).

Stand Constraints

No Stand Constraint issues.

Night Constraints

Birmingham Night Flying Policy in Place.

Effective from 28th October 2018 to 30th October 20211.

Other Constraints

- Currently there are no permitted training flights at BHX.
- Only exemption is for based operators / aircraft and RAF Brize Norton aircraft with prior approval.

Arr/Dep Turnaround Feasibility

No Turnaround Feasibility issues.

Air Transport Movement Allocation by Operator

Comparison between S18 End vs. S19 Start



Operator	FULL SEASON ALLOCATION								PEAK WEEK ALLOCATION							
	S18 ATMs	S19 ATMs	+/- change	S19 Rank	S18 Seats	S19 Seats	+/- change	S19 Rank	S18 ATMs	S19 ATMs	+/- change	S19 Rank	S18 Seats	S19 Seats	+/- change	S19 Rank
Adria Airways	2	-	-2	41	135	-	-135	36	-	-	0	35	-	-	0	30
Aer Lingus	3,048	3,076	28	6	338,977	343,668	4,691	8	96	100	4	6	10,788	11,280	492	8
Air Arabia Maroc	-	78	78	31	-	13,572	13,572	27	-	2	2	32	-	348	348	29
Air France	1,103	1,170	67	11	178,306	181,790	3,484	12	40	40	0	9	6,254	6,208	-46	12
Air Horizont	2	-	-2	41	325	-	-325	36	-	-	0	35	-	-	0	30
Air India	437	418	-19	24	111,979	107,008	-4,971	16	16	14	-2	21	4,096	3,584	-512	16
Air Itlay	1	-	-1	41	261	-	-261	36	-	-	0	35	-	-	0	30
Air Malta	48	48	0	34	8,710	8,640	-70	30	2	2	0	32	360	360	0	28
Air Nostrum	6	-	-6	41	339	-	-339	36	-	-	0	35	-	-	0	30
Airest	252	300	48	26	-	-	0	36	10	10	0	26	-	-	0	30
AirTanker	10	-	-10	41	2,816	-	-2,816	36	-	-	0	35	-	-	0	30
AlbaStar	5	-	-5	41	859	-	-859	36	-	-	0	35	-	-	0	30
Alitalia	3	-	-3	41	399	-	-399	36	-	-	0	35	-	-	0	30
Austrian Airlines	4	-	-4	41	674	-	-674	36	-	-	0	35	-	-	0	30
Balkan Holidays Air Ltd	51	60	9	32	8,884	10,800	1,916	29	2	4	2	31	360	720	360	27
Blue Air	505	544	39	20	92,328	92,558	230	18	16	20	4	20	2,898	3,408	510	18
Blue Panorama Airlines	2	-	-2	41	325	-	-325	36	-	-	0	35	-	-	0	30
BMI Regional	19	-	-19	41	759	-	-759	36	-	-	0	35	-	-	0	30
Bravo Airways	15	-	-15	41	1,997	-	-1,997	36	-	-	0	35	-	-	0	30
British Airways	182	-	-182	41	17,830	-	-17,830	36	8	-	-8	35	784	-	-784	30
Brussels Airlines	878	1,010	132	13	100,798	142,410	41,612	14	23	34	11	12	2,254	4,794	2,540	14
Corendon Airlines Europe	-	4	4	36	-	756	756	31	-	-	0	35	-	-	0	30
CSA Czech Airlines	374	382	8	25	53,415	72,116	18,701	23	12	14	2	21	1,778	2,646	868	23
Eastern Airways	3	-	-3	41	195	-	-195	36	-	-	0	35	-	-	0	30
EasyJet	1,256	1,248	-8	10	206,030	205,488	-542	11	40	40	0	9	6,504	6,600	96	11
Emirates	840	802	-38	15	514,347	493,230	-21,117	6	28	28	0	14	17,220	17,220	0	6
Eurowings	1,242	1,266	24	9	184,721	215,400	30,679	10	42	40	-2	9	6,308	6,784	476	10
Federal Express	683	720	37	17	-	-	0	36	24	24	0	17	-	-	0	30
Fly Ernest	2	-	-2	41	269	-	-269	36	-	-	0	35	-	-	0	30
Fly One	25	-	-25	41	3,623	-	-3,623	36	2	-	-2	35	288	-	-288	30
Flybe	19,731	19,499	-232	1	1,592,403	1,590,002	-2,401	3	677	666	-11	1	55,232	54,398	-834	3
Freebird Airlines	136	-	-136	41	24,561	-	-24,561	36	8	-	-8	35	1,440	-	-1,440	30
Germania	5	-	-5	41	722	-	-722	36	-	-	0	35	-	-	0	30
Iberia Express	228	240	12	29	39,751	43,200	3,449	26	8	8	0	29	1,386	1,440	54	26
Indigo	-	52	52	33	-	11,544	11,544	28	-	-	0	35	-	-	0	30
Jet2.com	6,397	8,322	1,925	3	1,225,843	1,600,479	374,636	2	237	332	95	2	45,621	63,771	18,150	1
Jota Aviation	4	-	-4	41	324	-	-324	36	-	-	0	35	-	-	0	30
KLM Royal Dutch Airlines	2,206	2,010	-196	8	302,830	295,824	-7,006	9	78	66	-12	8	10,532	9,424	-1,108	9
LOT Polish Airlines	-	2	2	37	-	164	164	34	-	-	0	35	-	-	0	30
Lufthansa	2,693	2,774	81	7	402,468	451,678	49,210	7	90	94	4	7	13,722	15,288	1,566	7
Maleth-Aero	2	1	-1	39	286	148	-138	35	-	-	0	35	-	-	0	30
PIA Pakistan International	180	230	50	30	66,455	83,350	16,895	19	6	8	2	29	2,230	2,888	658	21
Primera Air	525	-	-525	41	93,689	-	-93,689	36	36	-	-36	35	6,876	-	-6,876	30
Qatar Airways	421	420	-1	22	106,926	106,680	-246	17	14	14	0	21	3,556	3,556	0	17
Royal Jordanian	1	-	-1	41	261	-	-261	36	-	-	0	35	-	-	0	30
Ryanair	8,455	8,852	397	2	1,598,025	1,673,028	75,003	1	278	300	22	3	52,542	56,700	4,158	2
SAS Scandinavian	629	706	77	19	76,196	82,416	6,220	20	24	24	0	17	2,944	2,940	-4	20
Spicejet	-	258	258	28	-	68,886	68,886	24	-	12	12	25	-	3,204	3,204	19
Swiss International	718	720	2	17	83,143	81,420	-1,723	21	22	24	2	17	2,396	2,714	318	22
Thomas Cook (UK)	3,340	3,166	-174	5	708,716	683,720	-24,996	5	126	112	-14	5	26,600	24,200	-2,400	5
Titan Airways	29	2	-27	37	5,434	336	-5,098	32	3	-	-3	35	669	-	-669	30
Travel Service	1	-	-1	41	183	-	-183	36	-	-	0	35	-	-	0	30
TUI Airways	5,500	6,305	805	4	1,156,191	1,339,067	182,876	4	221	241	20	4	46,120	50,751	4,631	4
Turkish Airlines	720	840	120	14	116,946	140,280	23,334	15	24	28	4	14	3,820	4,676	856	15
Turkmenistan Airlines	244	274	30	27	47,535	51,786	4,251	25	4	10	6	26	756	1,890	1,134	25
Uzbekistan Airways	2	-	-2	41	478	-	-478	36	-	-	0	35	-	-	0	30
VLM Airlines	205	-	-205	41	10,258	-	-10,258	36	14	-	-14	35	700	-	-700	30
Vueling	359	420	61	22	65,323	75,600	10,277	22	12	14	2	21	2,240	2,520	280	24
Wizz Air	747	750	3	16	141,929	151,500	9,571	13	24	26	2	16	4,520	5,280	760	13
Zimex Aviation	290	1,018	728	12	-	-	0	36	10	34	24	12	-	-	0	30
TOTAL	65,789	68,434	2,645		9,701,692	10,418,733	717,041		2,326	2,396	70		344,168	369,592	25,424	

Operators with 0 'ATMs' in both S18 End & S19 Start schedules are included in the table due to appearing in the S18 Start schedule (either with/without allocated slots).

Peak Week - Allocation and Slot Adjustment Distribution by Operator

Schedule: S19 Start



Operator	S19 allocated ATMs	SLOT ADJUSTMENTS (MINUTES OFF REQUESTED TIME)													Requests with NO slot allocated			
		0	5	10	15	20	25	30	35	40	45	50	55	60		>60		
Aer Lingus	100	100.0%	0.0%	0.0%	0.0%	0.0%	0.0%	0.0%	0.0%	0.0%	0.0%	0.0%	0.0%	0.0%	0.0%	0.0%	0.0%	-
Air Arabia Maroc	2	100.0%	0.0%	0.0%	0.0%	0.0%	0.0%	0.0%	0.0%	0.0%	0.0%	0.0%	0.0%	0.0%	0.0%	0.0%	0.0%	-
Air France	40	100.0%	0.0%	0.0%	0.0%	0.0%	0.0%	0.0%	0.0%	0.0%	0.0%	0.0%	0.0%	0.0%	0.0%	0.0%	0.0%	-
Air India	14	100.0%	0.0%	0.0%	0.0%	0.0%	0.0%	0.0%	0.0%	0.0%	0.0%	0.0%	0.0%	0.0%	0.0%	0.0%	0.0%	-
Air Malta	2	100.0%	0.0%	0.0%	0.0%	0.0%	0.0%	0.0%	0.0%	0.0%	0.0%	0.0%	0.0%	0.0%	0.0%	0.0%	0.0%	-
Airest	10	100.0%	0.0%	0.0%	0.0%	0.0%	0.0%	0.0%	0.0%	0.0%	0.0%	0.0%	0.0%	0.0%	0.0%	0.0%	0.0%	-
Balkan Holidays Air Ltd	4	100.0%	0.0%	0.0%	0.0%	0.0%	0.0%	0.0%	0.0%	0.0%	0.0%	0.0%	0.0%	0.0%	0.0%	0.0%	0.0%	-
Blue Air	20	100.0%	0.0%	0.0%	0.0%	0.0%	0.0%	0.0%	0.0%	0.0%	0.0%	0.0%	0.0%	0.0%	0.0%	0.0%	0.0%	-
Brussels Airlines	34	100.0%	0.0%	0.0%	0.0%	0.0%	0.0%	0.0%	0.0%	0.0%	0.0%	0.0%	0.0%	0.0%	0.0%	0.0%	0.0%	-
CSA Czech Airlines	14	100.0%	0.0%	0.0%	0.0%	0.0%	0.0%	0.0%	0.0%	0.0%	0.0%	0.0%	0.0%	0.0%	0.0%	0.0%	0.0%	-
Easyjet	40	100.0%	0.0%	0.0%	0.0%	0.0%	0.0%	0.0%	0.0%	0.0%	0.0%	0.0%	0.0%	0.0%	0.0%	0.0%	0.0%	-
Emirates	28	100.0%	0.0%	0.0%	0.0%	0.0%	0.0%	0.0%	0.0%	0.0%	0.0%	0.0%	0.0%	0.0%	0.0%	0.0%	0.0%	-
Eurowings	40	100.0%	0.0%	0.0%	0.0%	0.0%	0.0%	0.0%	0.0%	0.0%	0.0%	0.0%	0.0%	0.0%	0.0%	0.0%	0.0%	-
Federal Express	24	100.0%	0.0%	0.0%	0.0%	0.0%	0.0%	0.0%	0.0%	0.0%	0.0%	0.0%	0.0%	0.0%	0.0%	0.0%	0.0%	-
Flybe	666	99.8%	0.0%	0.0%	0.0%	0.0%	0.0%	0.0%	0.0%	0.0%	0.0%	0.2%	0.0%	0.0%	0.0%	0.0%	0.0%	-
Iberia Express	8	100.0%	0.0%	0.0%	0.0%	0.0%	0.0%	0.0%	0.0%	0.0%	0.0%	0.0%	0.0%	0.0%	0.0%	0.0%	0.0%	-
Jet2.com	332	95.8%	0.3%	0.6%	0.9%	0.0%	0.3%	0.3%	0.0%	0.0%	0.0%	0.0%	0.0%	0.9%	0.9%	0.0%	0.0%	-
KLM Royal Dutch Airlines	66	100.0%	0.0%	0.0%	0.0%	0.0%	0.0%	0.0%	0.0%	0.0%	0.0%	0.0%	0.0%	0.0%	0.0%	0.0%	0.0%	-
Lufthansa	94	98.9%	0.0%	1.1%	0.0%	0.0%	0.0%	0.0%	0.0%	0.0%	0.0%	0.0%	0.0%	0.0%	0.0%	0.0%	0.0%	-
PIA Pakistan International	8	100.0%	0.0%	0.0%	0.0%	0.0%	0.0%	0.0%	0.0%	0.0%	0.0%	0.0%	0.0%	0.0%	0.0%	0.0%	0.0%	-
Qatar Airways	14	92.9%	0.0%	0.0%	0.0%	0.0%	0.0%	0.0%	7.1%	0.0%	0.0%	0.0%	0.0%	0.0%	0.0%	0.0%	0.0%	-
Ryanair	300	97.7%	0.7%	0.3%	0.3%	0.0%	0.0%	0.0%	0.0%	0.0%	0.3%	0.0%	0.0%	0.0%	0.0%	0.7%	0.0%	-
SAS Scandinavian	24	100.0%	0.0%	0.0%	0.0%	0.0%	0.0%	0.0%	0.0%	0.0%	0.0%	0.0%	0.0%	0.0%	0.0%	0.0%	0.0%	-
Spicejet	12	91.7%	0.0%	0.0%	0.0%	0.0%	0.0%	0.0%	8.3%	0.0%	0.0%	0.0%	0.0%	0.0%	0.0%	0.0%	0.0%	-
Swiss International	24	100.0%	0.0%	0.0%	0.0%	0.0%	0.0%	0.0%	0.0%	0.0%	0.0%	0.0%	0.0%	0.0%	0.0%	0.0%	0.0%	-
Thomas Cook (UK)	112	99.1%	0.0%	0.0%	0.9%	0.0%	0.0%	0.0%	0.0%	0.0%	0.0%	0.0%	0.0%	0.0%	0.0%	0.0%	0.0%	-
TUI Airways	241	94.2%	0.8%	1.2%	0.8%	0.8%	0.4%	0.4%	0.8%	0.0%	0.0%	0.4%	0.0%	0.0%	0.0%	0.0%	0.0%	-
Turkish Airlines	28	100.0%	0.0%	0.0%	0.0%	0.0%	0.0%	0.0%	0.0%	0.0%	0.0%	0.0%	0.0%	0.0%	0.0%	0.0%	0.0%	-
Turkmenistan Airlines	10	100.0%	0.0%	0.0%	0.0%	0.0%	0.0%	0.0%	0.0%	0.0%	0.0%	0.0%	0.0%	0.0%	0.0%	0.0%	0.0%	-
Vueling	14	100.0%	0.0%	0.0%	0.0%	0.0%	0.0%	0.0%	0.0%	0.0%	0.0%	0.0%	0.0%	0.0%	0.0%	0.0%	0.0%	-
Wizz Air	26	100.0%	0.0%	0.0%	0.0%	0.0%	0.0%	0.0%	0.0%	0.0%	0.0%	0.0%	0.0%	0.0%	0.0%	0.0%	0.0%	-
Zimex Aviation	34	100.0%	0.0%	0.0%	0.0%	0.0%	0.0%	0.0%	0.0%	0.0%	0.0%	0.0%	0.0%	0.0%	0.0%	0.0%	0.0%	-
TOTAL	2,396	98.3%	0.2%	0.3%	0.3%	0.1%	0.1%	0.1%	0.1%	0.0%	0.1%	0.0%	0.0%	0.1%	0.2%		6	

Operators with 0 'allocated ATMs' and 0 'Requests with NO slot allocated' in S19, are included in this list due to having slots allocated in either S18 Start or S18 End schedules.

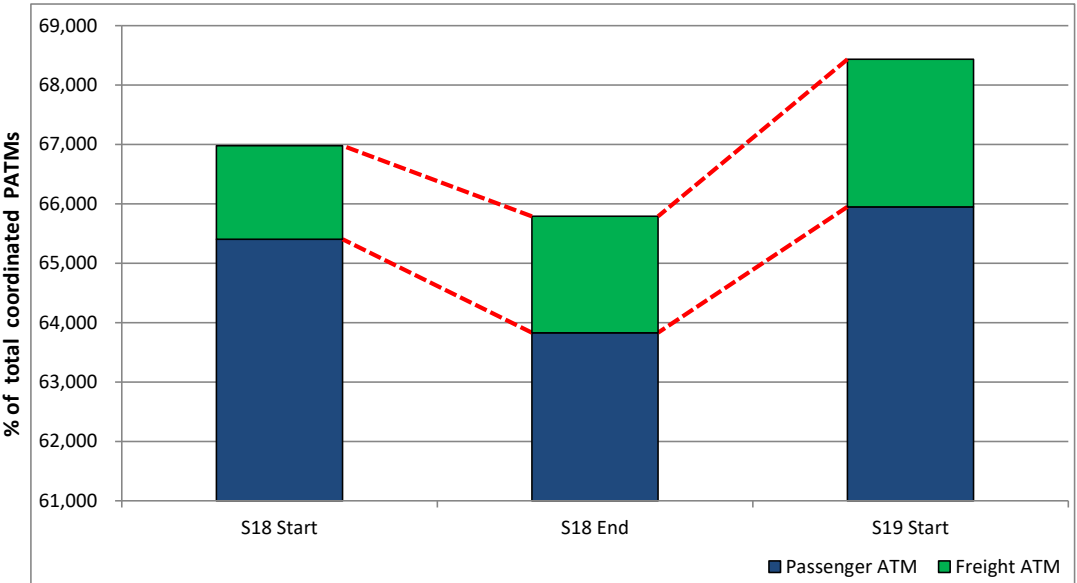
Significant Route Changes

Operator	Category	Description of change from S18 schedule to S19 schedule
Air Arabia Maroc	NEW	Agadir service.
British Airways	CANCELLED	Malaga, Florence & Palma Mallorca services.
Brussels Airlines	CHANGE	Increase Brussels service.
Emirates	CHANGE	Decrease Dubai service.
Flybe	CHANGE	Decrease Amsterdam, Belfast City, Paris Ch. De Gaulle, Dusseldorf, Edinburgh, Hanover, Jersey & Knock services.
Flybe	CHANGE	Increase Milan Malpensa & Guernsey services.
Indigo	NEW	Amritsar service.
Jet2.com	NEW	Izmir, Bourgas, Chania, Bergerac Roumanieres, Pula & Verona services.
Jet2.com	CHANGE	Increase Lanzarote, Malaga, Alicante, Antalya, Corfu, Faro, Larnaca, Ibiza, Las Palmas, Paphos, Palma Mallorca, Prague & Tenerife services.
KLM Royal Dutch Airlines	CHANGE	Decrease Amsterdam service.
PIA Pakistan International	CHANGE	Increase Islamabad service.
Primera Air	CANCELLED	Palma Mallorca & Malaga services.
Ryanair	CHANGE	Decrease Las Palmas & Dublin services.
Ryanair	CHANGE	Increase Malaga, Alicante, Faro, Palma Mallorca & Krakow services.
Ryanair	CANCELLED	Vilnius service.
SAS Scandinavian	CHANGE	Increase Copenhagen service.
SAS Scandinavian	CANCELLED	Stockholm service.
Spicejet	NEW	Amritsar service.
Thomas Cook (UK)	CHANGE	Decrease Antalya, Dalaman & Paphos services.
Thomas Cook (UK)	CANCELLED	Comiso, Varna & Thessaloniki services.
TUI Airways	NEW	Bodrum, Agadir, Thessaloniki & Izmir services.
TUI Airways	CHANGE	Increase Dalaman, Boa Vista Cape Verde, Enfidha & Antalya services.
TUI Airways	CANCELLED	Funchal service.
Turkish Airlines	CHANGE	Increase Istanbul service.
VLM Airlines	CANCELLED	Antwerp service.
Vueling	CHANGE	Increase Barcelona service.
Wizz Air	NEW	Cluj-Napoca Romania service.
Wizz Air	CANCELLED	Poznan service.

Full Season - ATM Analysis

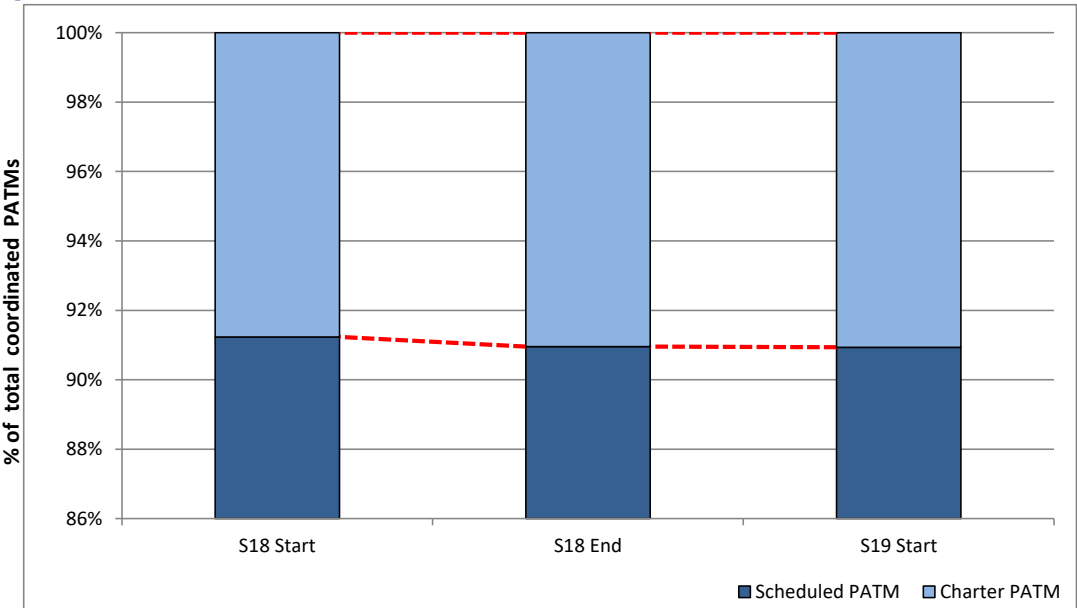


Total ATMs: Passenger ATMs vs. Freight ATMs



Schedule Snapshot

Passenger ATMs: Scheduled vs. Charter

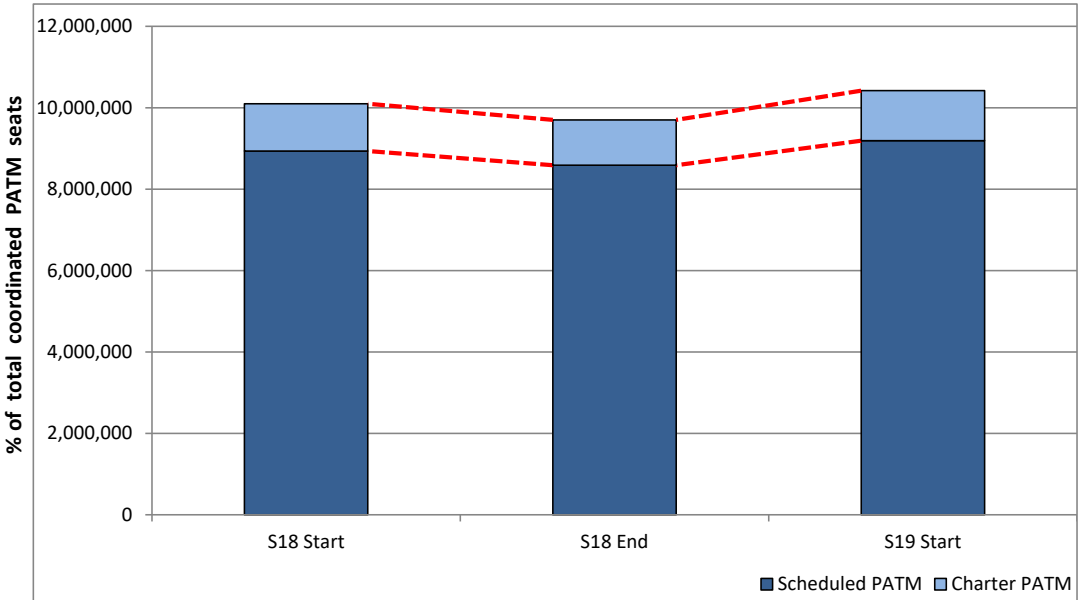


Schedule Snapshot

Full Season - PATM Seats Analysis

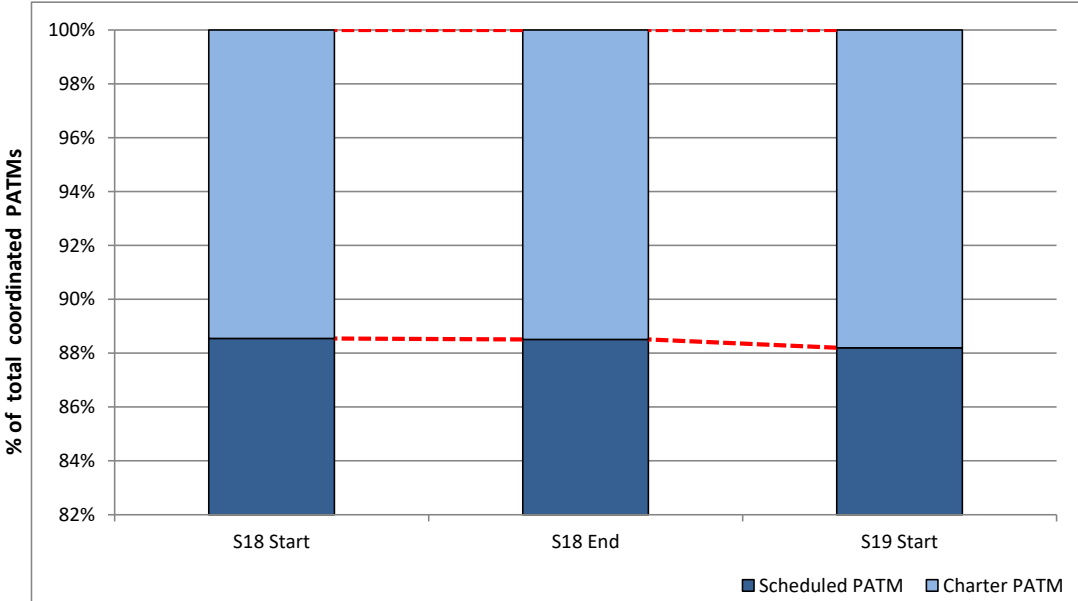


Total Passenger ATM seats: Scheduled vs. Charter



Schedule Snapshot

Passenger ATM seats: Scheduled vs. Charter

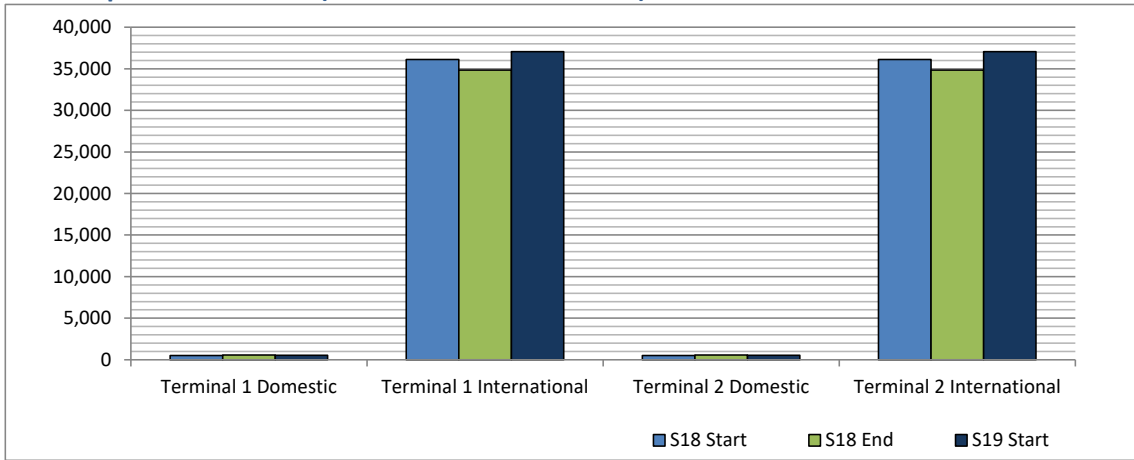


Schedule Snapshot

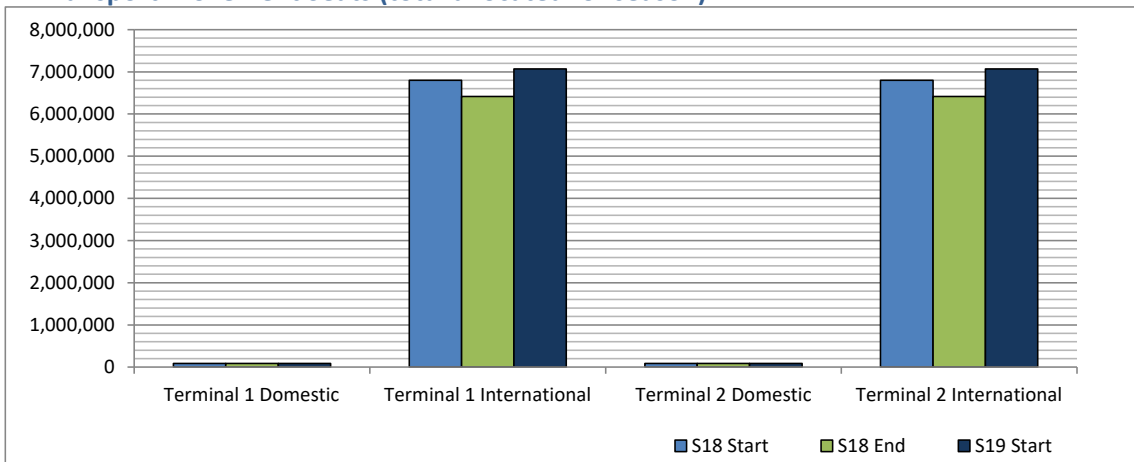
Full Season - Terminal Analysis



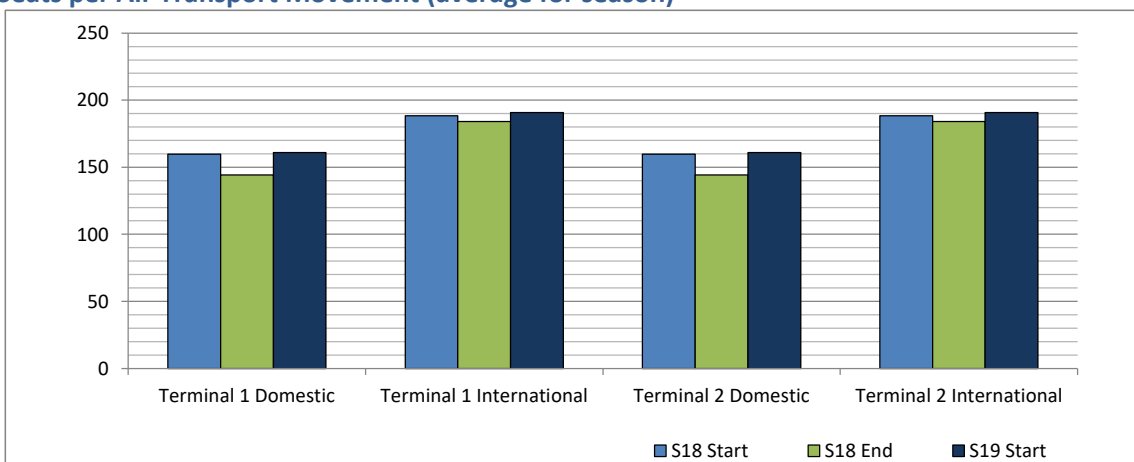
Air Transport Movements (total allocated for season)



Air Transport Movement Seats (total allocated for season)



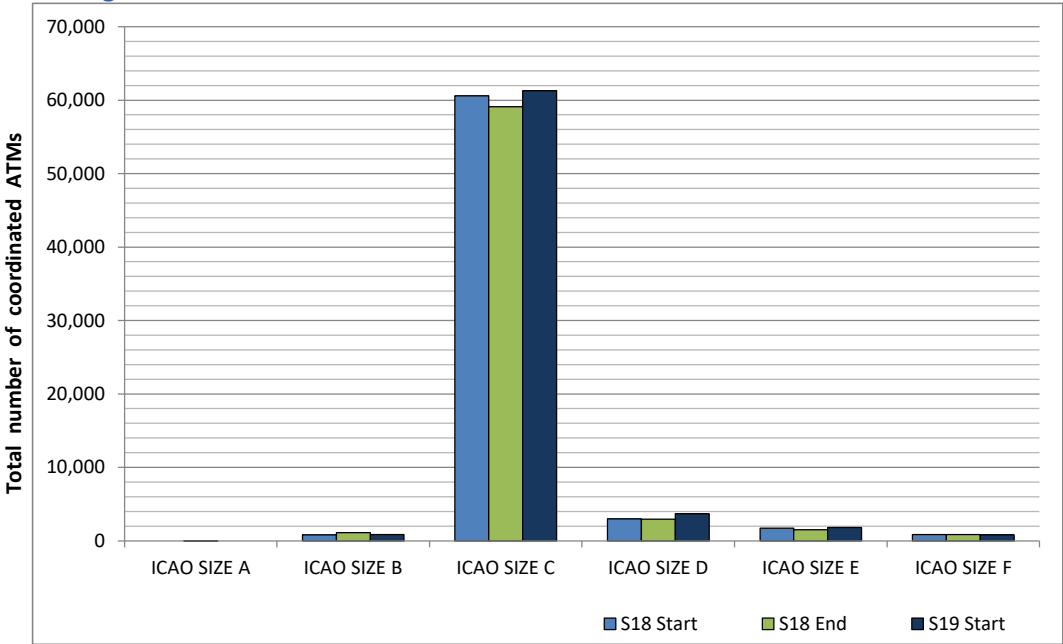
Seats per Air Transport Movement (average for season)



Full Season - Aircraft Size Analysis

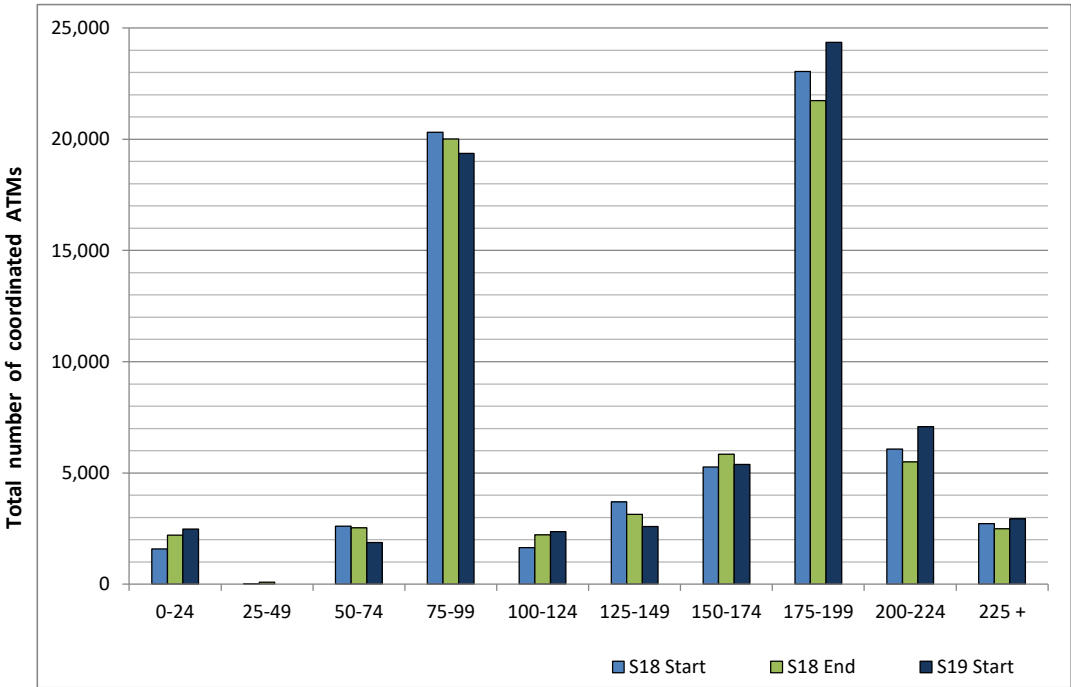


ICAO size designation



Note: See Glossary for definitions of ICAO SIZE groupings

Air Transport Movement seat distribution

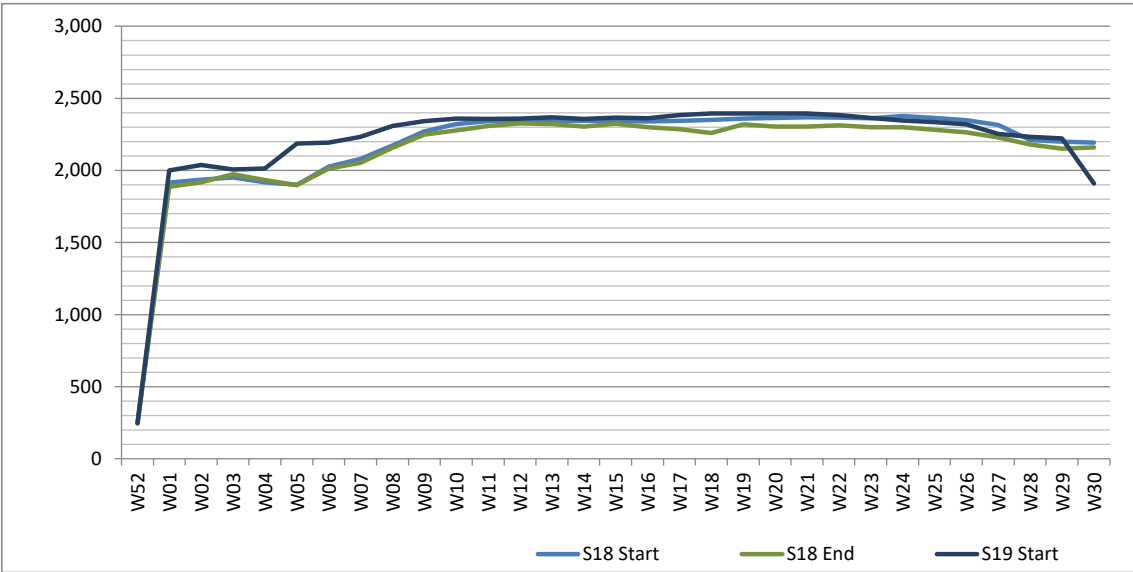


Note: FREIGHT-ONLY services with 0 seats are included in the first seat band '0-24'

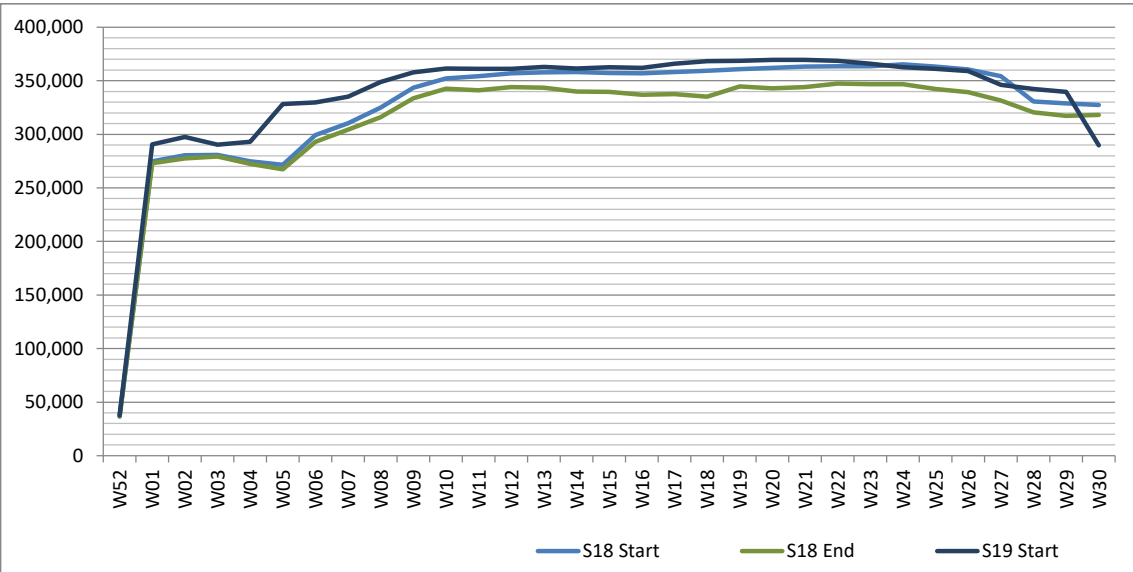
Full Season - Seasonality



Air Transport Movements by week of season



Air Transport Movement Seats by week of season



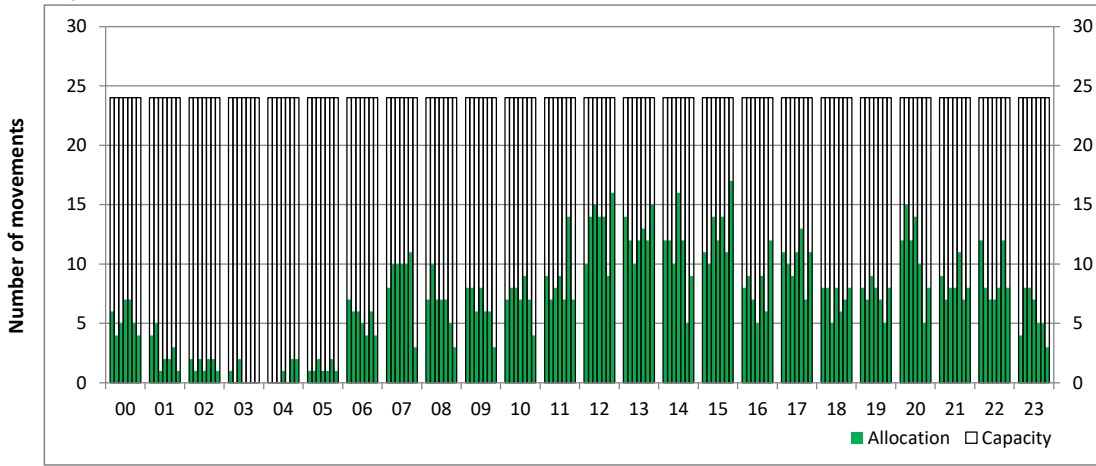
Peak Week - Hourly Runway Allocation

Schedule: S19 Start



Hourly Arrival Allocation

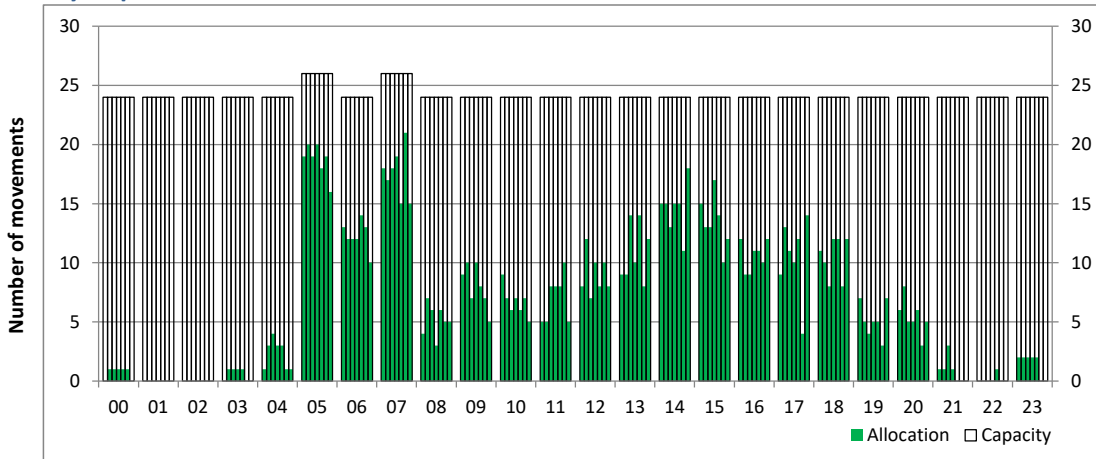
Time: UTC



Hour of day (24 hour format)

Hourly Departure Allocation

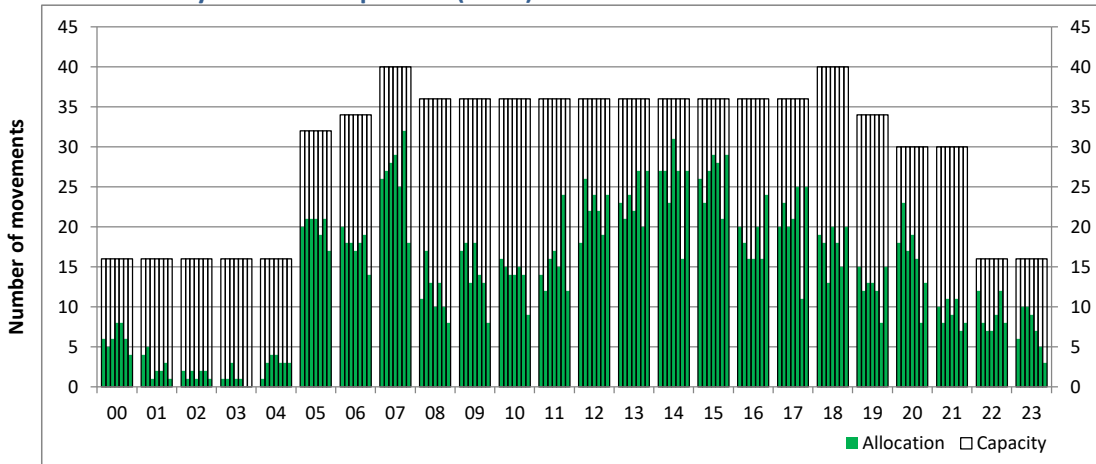
Time: UTC



Hour of day (24 hour format)

Combined Hourly Arrival & Departure (Total) Allocation

Time: UTC



Hour of day (24 hour format)

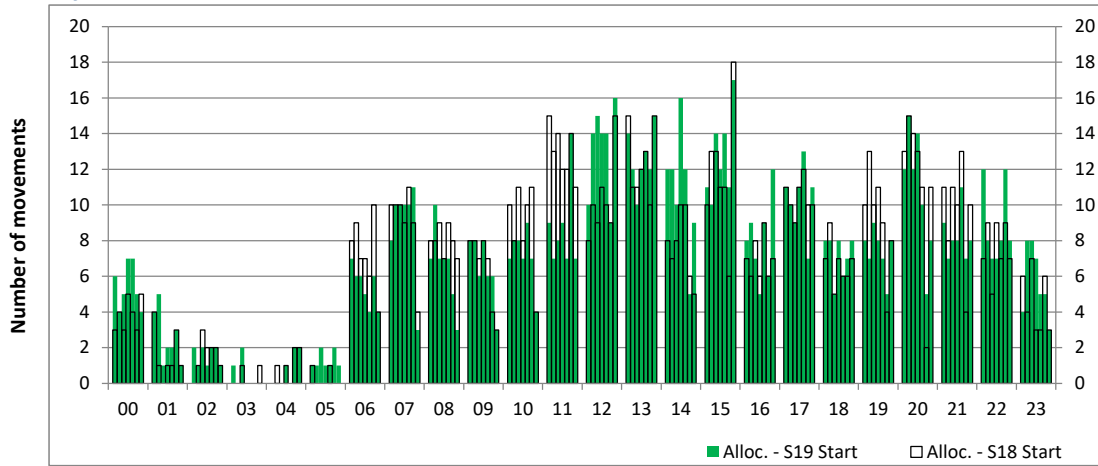
Peak Week - Runway Allocation Comparison

Comparison of S19 Start vs. S18 Start



Hourly Arrival Allocation

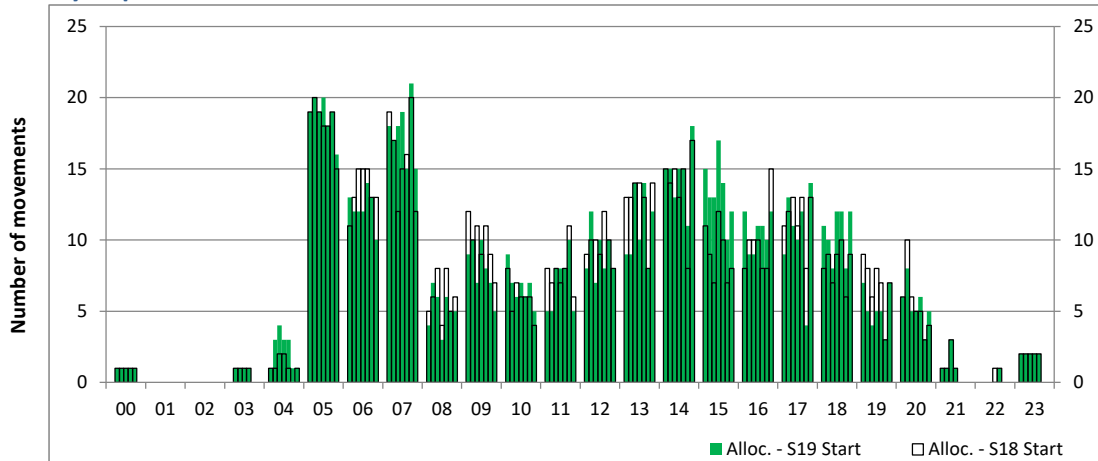
Time: UTC



Hour of day (24 hour format)

Hourly Departure Allocation

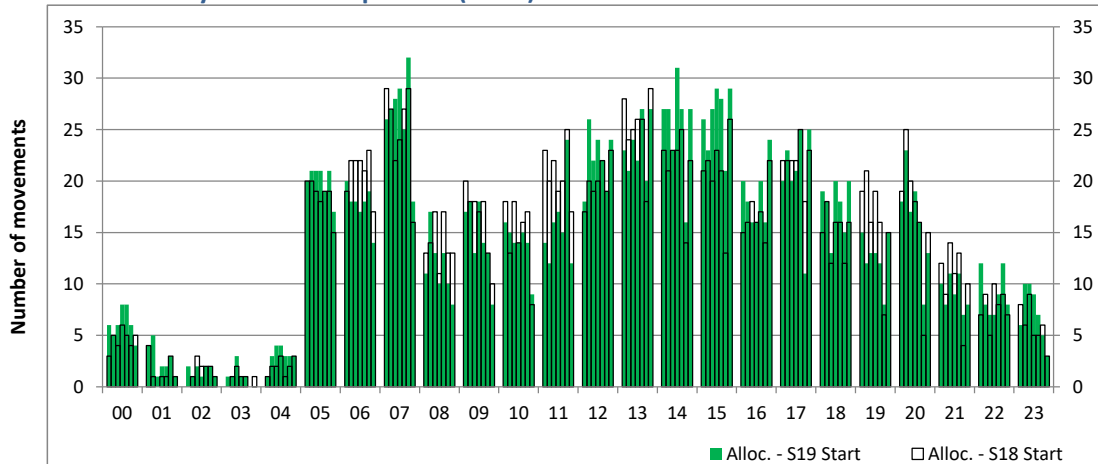
Time: UTC



Hour of day (24 hour format)

Combined Hourly Arrival & Departure (Total) Allocation

Time: UTC



Hour of day (24 hour format)

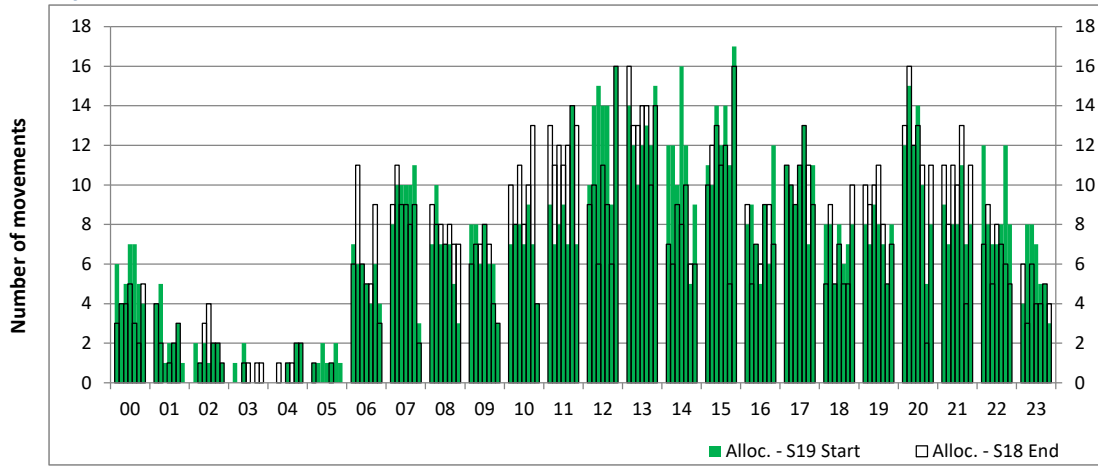
Peak Week - Runway Allocation Comparison

Comparison of S19 Start vs. S18 End



Hourly Arrival Allocation

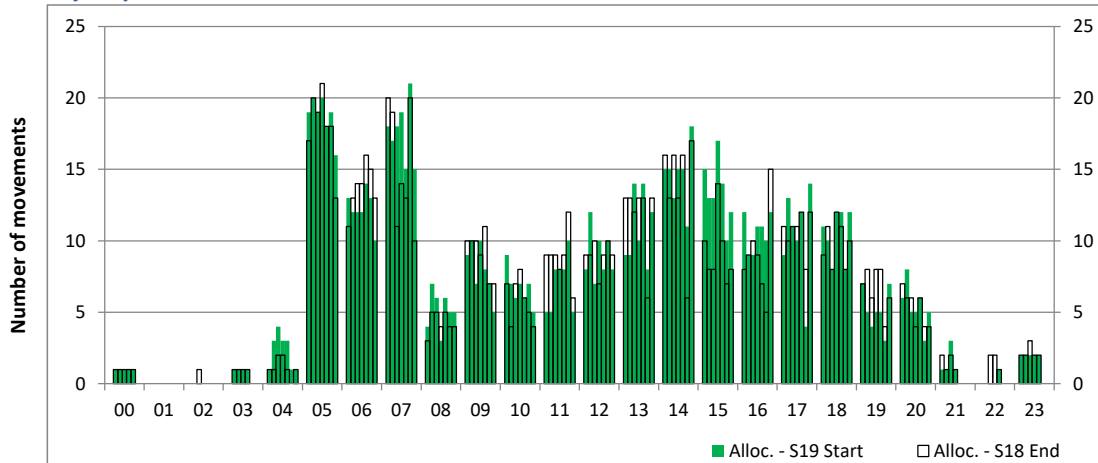
Time: UTC



Hour of day (24 hour format)

Hourly Departure Allocation

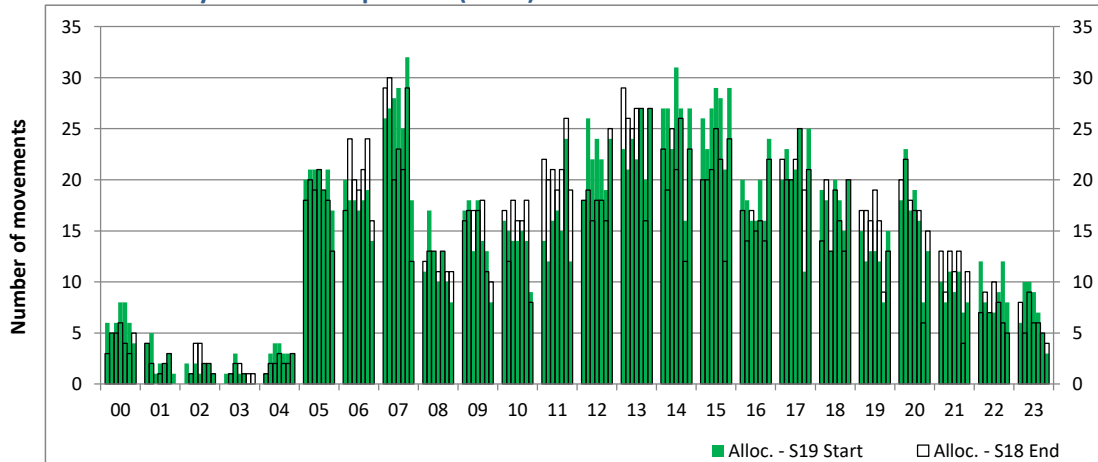
Time: UTC



Hour of day (24 hour format)

Combined Hourly Arrival & Departure (Total) Allocation

Time: UTC



Hour of day (24 hour format)

Peak Week - Passengers Histogram

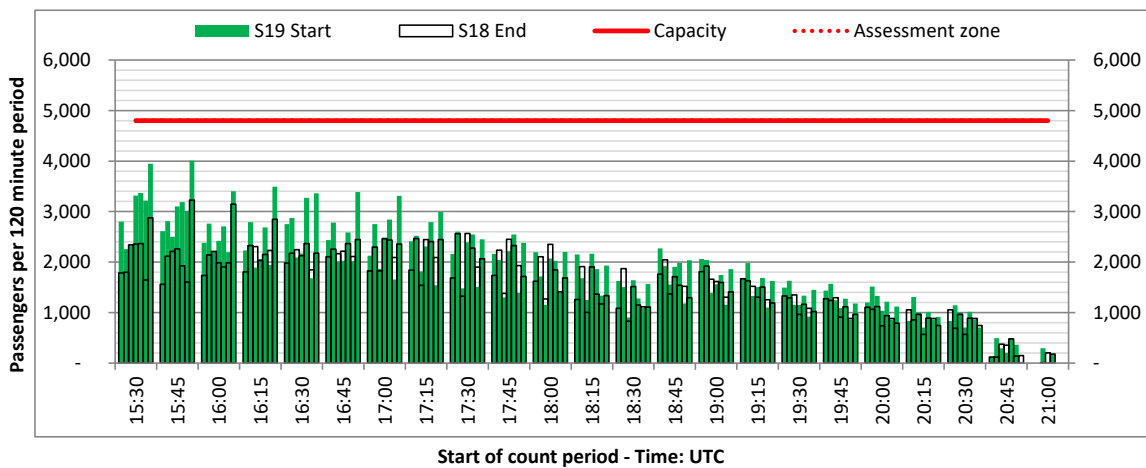
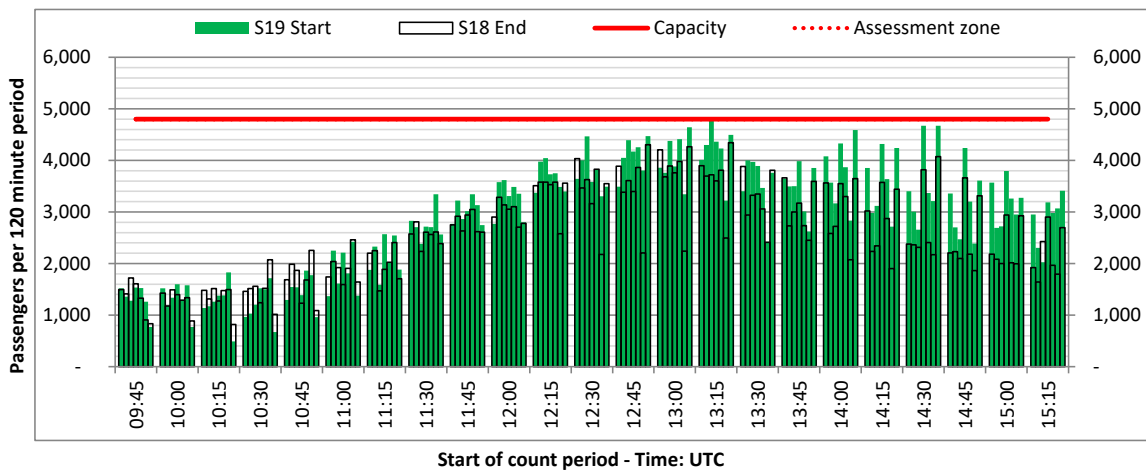
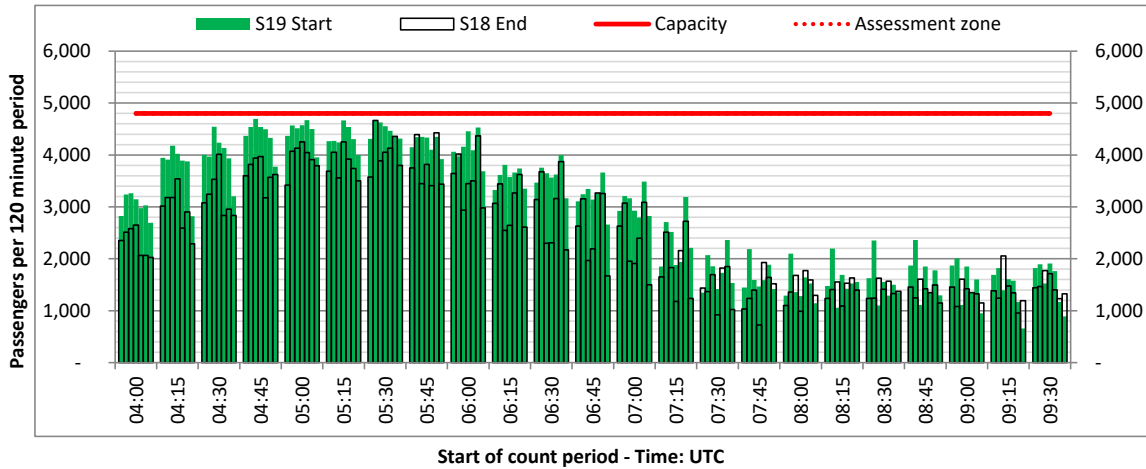
DEPARTURE - 120 minute count rolling every 15 mins (T120/15)



Terminals: All Terminals

Operators: All Operators

Days: 1234567



Peak Week - Passengers Histogram

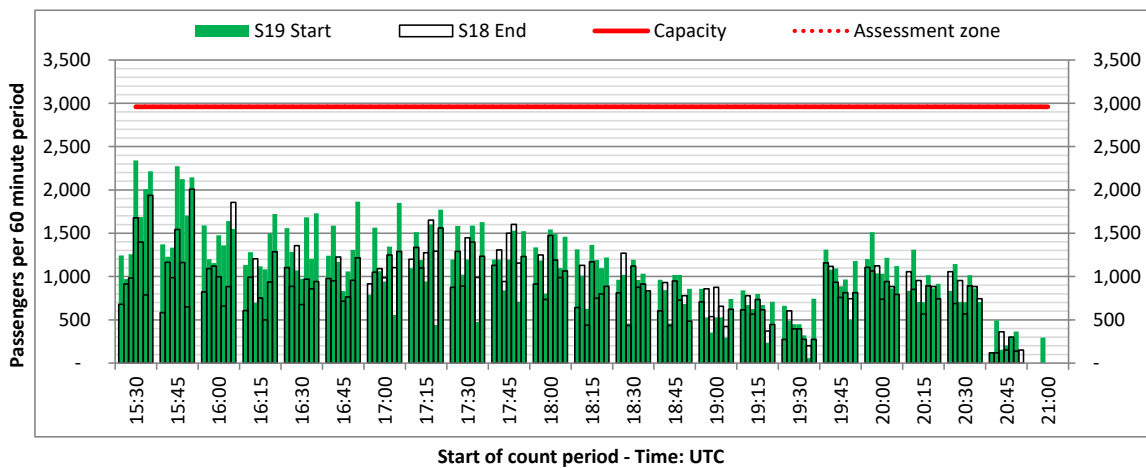
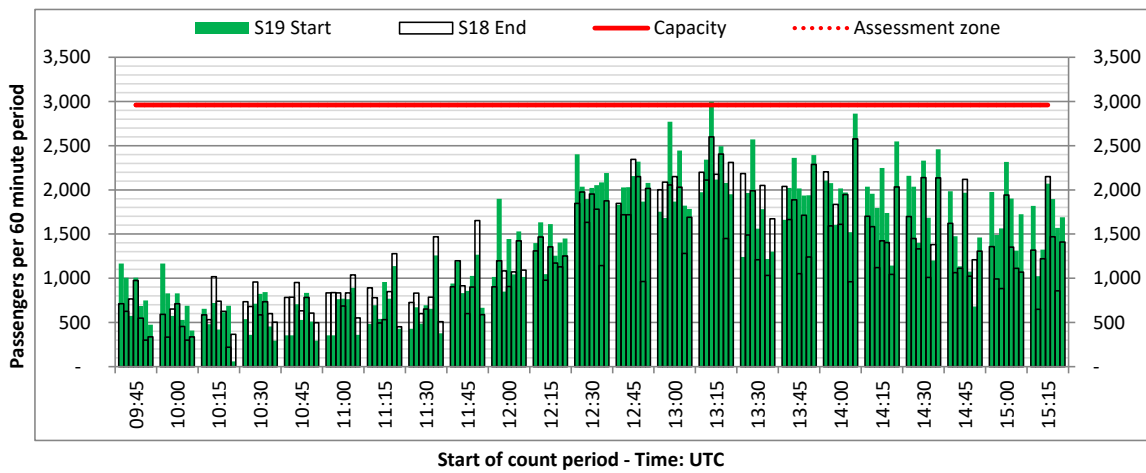
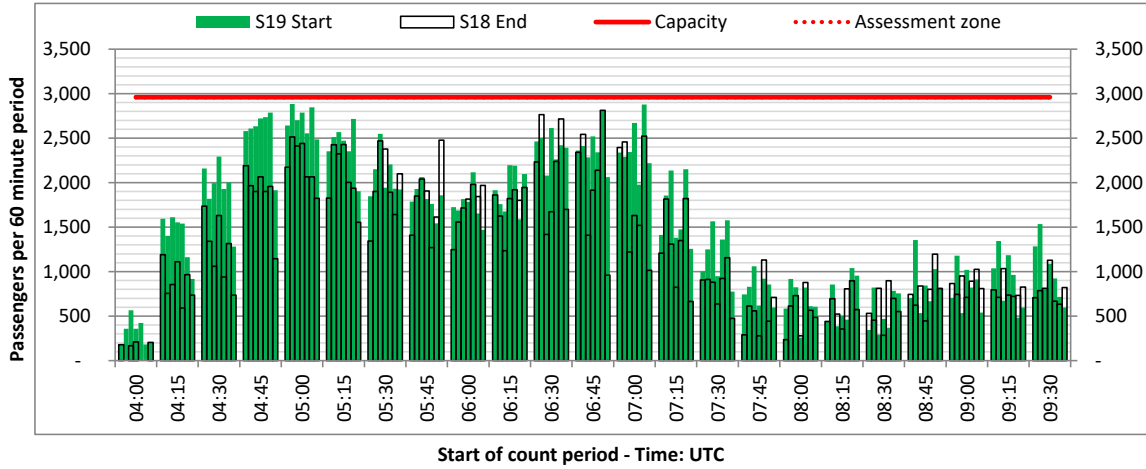
DEPARTURE - 60 minute count rolling every 15 mins (T60/15)



Terminals: All Terminals

Operators: All Operators

Days: 1234567



Peak Week - Passengers Histogram

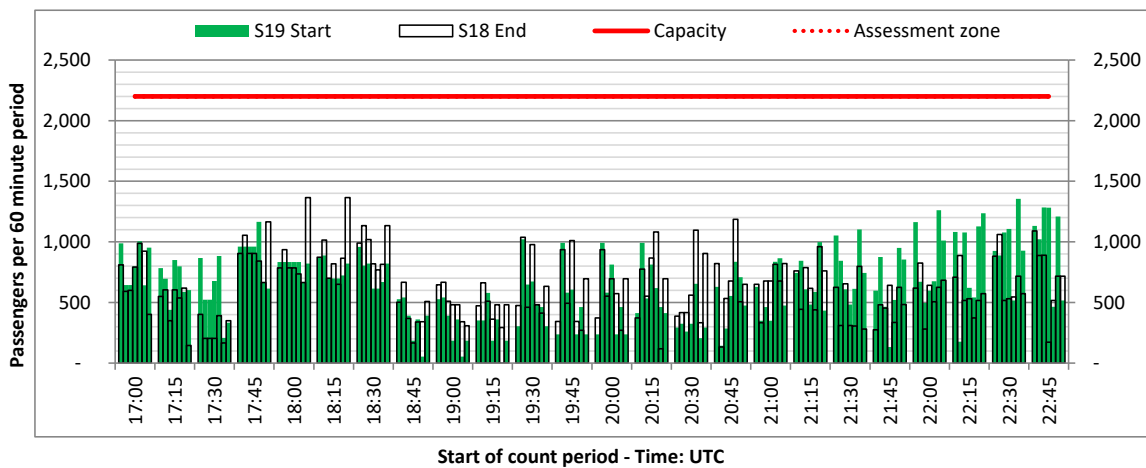
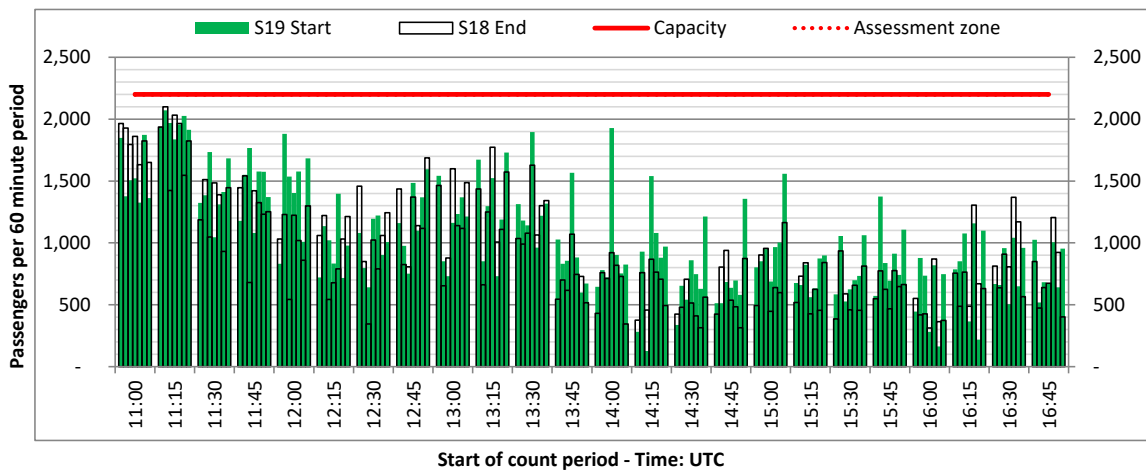
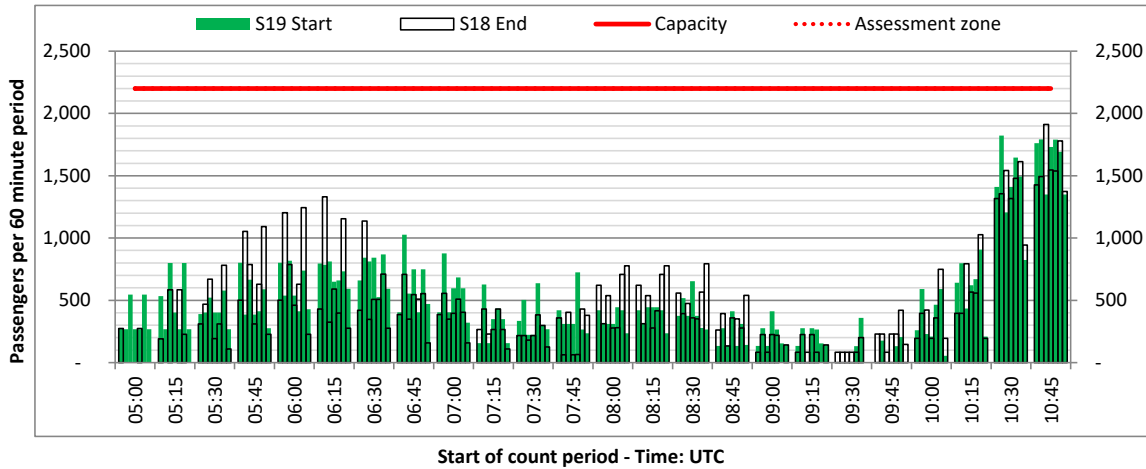
ARRIVAL - 60 minute count rolling every 15 mins (T60/15)



Terminals: 1I

Operators: All Operators

Days: 1234567



Peak Week - Passengers Histogram

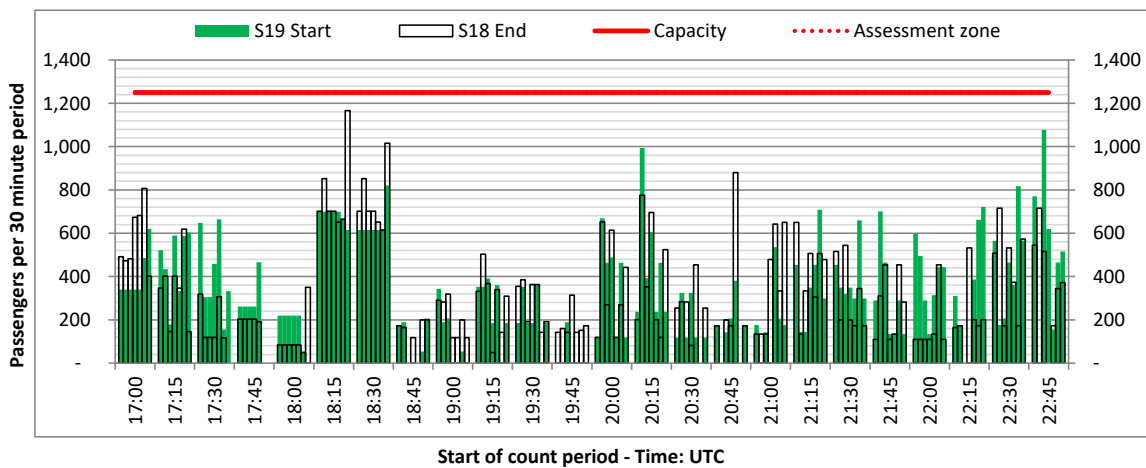
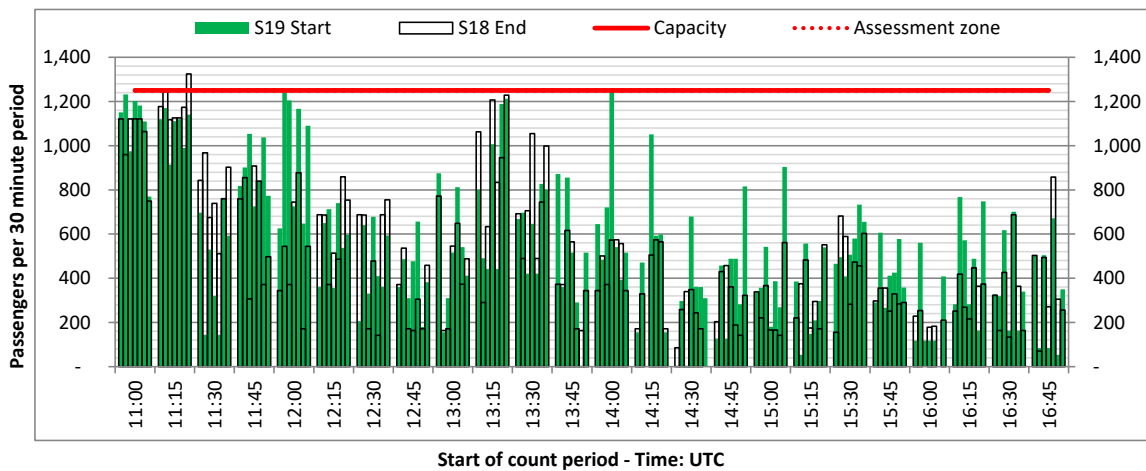
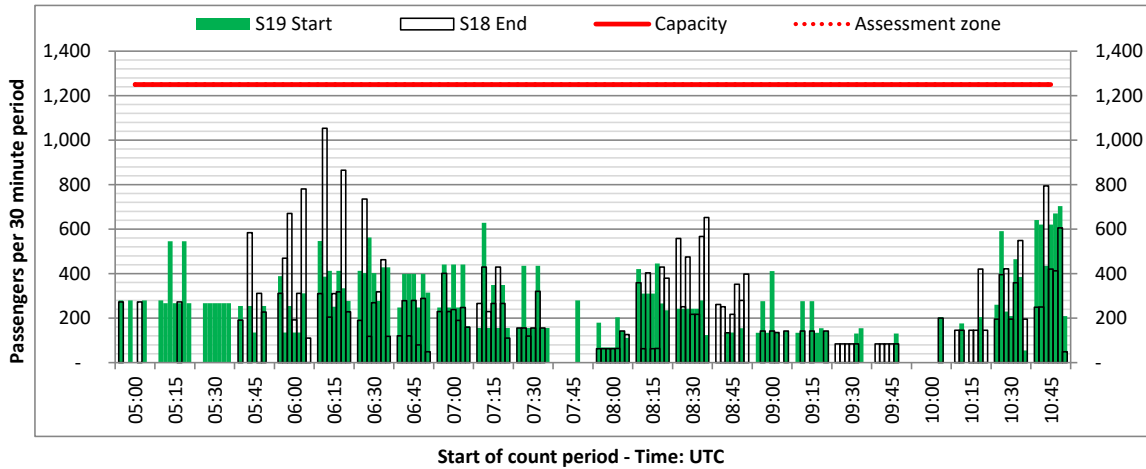
ARRIVAL - 30 minute count rolling every 15 mins (T30/15)



Terminals: 1I

Operators: All Operators

Days: 1234567



Peak Week - Passengers Histogram

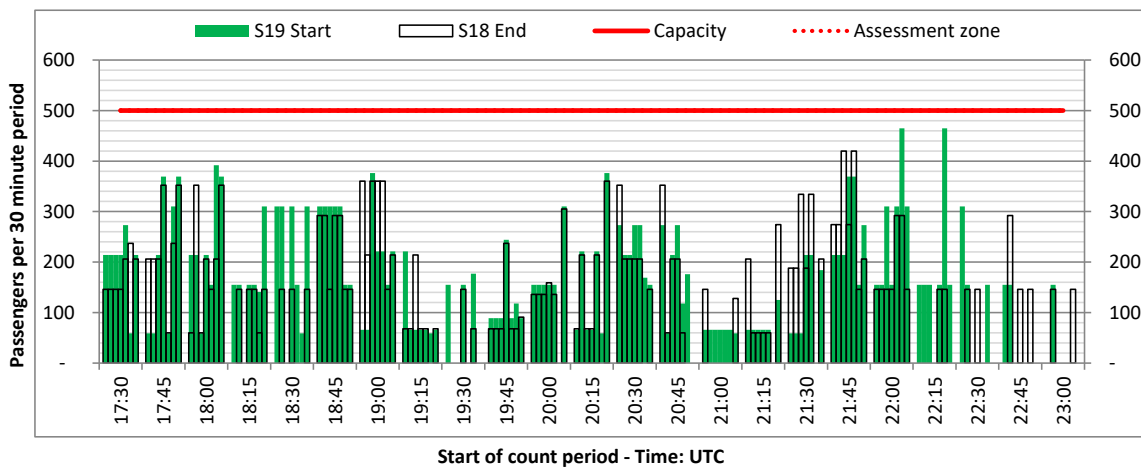
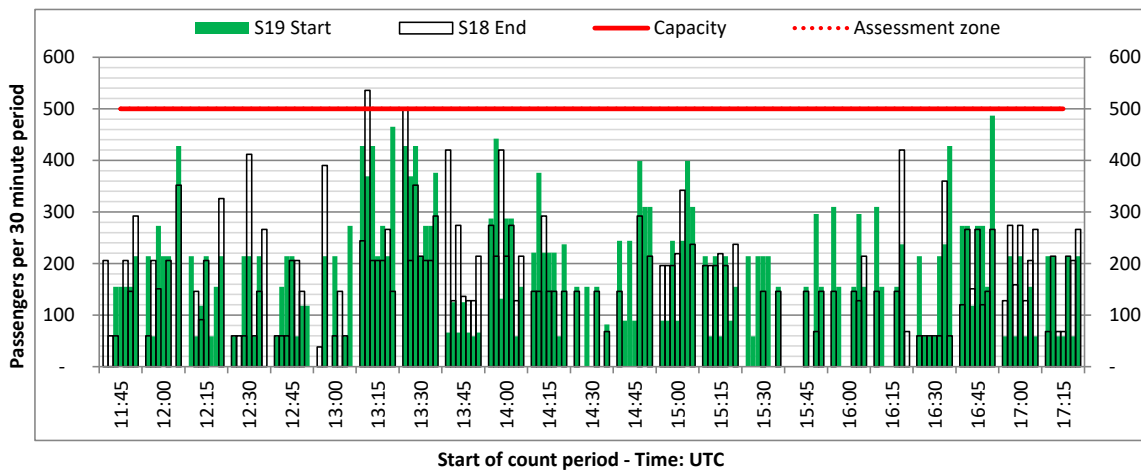
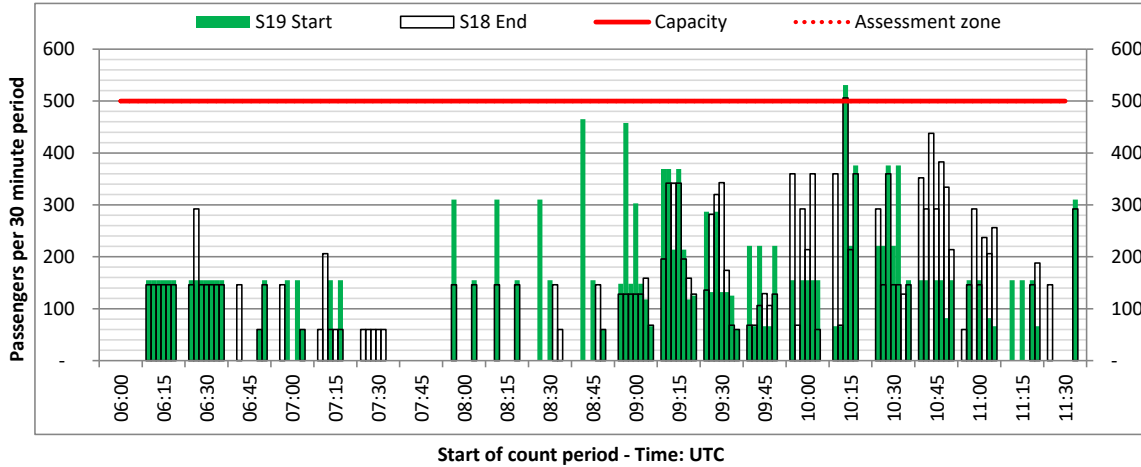
ARRIVAL - 30 minute count rolling every 15 mins (T30/15)



Terminals: 2I

Operators: All Operators

Days: 1234567



Glossary



Air Transport Movement (ATM)	Any aircraft movement which is either a scheduled or chartered passenger or cargo flight.
Common Travel Area (CTA)	Origin or Destination is in Republic of Ireland or the Channel Islands.
Demand	Unconstrained demand before any schedule adjustments have been made.
"Fill-in"	These are gaps in a historic series of slots which the carrier requests to "Fill-in" at Initial Submissions - Fill-ins will be recognisably part of the historic series and will have the same flight details to qualify as a "Fill-in".
Hist (SHL)	Snapshot of historic schedule rolled over from end of the previous equivalent season - as advised to airlines in the SHLs.
ICAO Size A	Aircraft with wingspan between 0.00m - 14.99m.
ICAO Size B	Aircraft with wingspan between 15.00m - 23.99m.
ICAO Size C	Aircraft with wingspan between 24.00m - 35.99m.
ICAO Size D	Aircraft with wingspan between 36.00m - 51.99m.
ICAO Size E	Aircraft with wingspan between 52.00m - 64.99m.
ICAO Size F	Aircraft with wingspan between 65.00m - 80.00m.
Init Coord	Snapshot of schedule immediately after Initial Coordination is completed - as advised to airlines in the SALs.
Passenger Air Transport Movement (PATM)	Any aircraft movement which is either a scheduled or chartered passenger flight.
Start	Snapshot of schedule shortly before the start of the scheduling season (exact date given below where used).
Time: Local	Times shown are in LOCAL time for the airport/scheduling season.
Time: UTC	Times shown are in Universal Time Constant (UTC).

Data snapshot descriptions

S18 Start	S18 schedule as cleared on Thu 15-Mar-18.
S18 End	S18 schedule as cleared on Sat 27-Oct-18.
S19 Start	S19 schedule as cleared on Fri 01-Feb-19.
Peak Week	Peak week for S18 is Mon 03-Sep-18 to Sun 09-Sep-18. Peak week for S19 is Mon 12-Aug-19 to Sun 18-Aug-19.

For ACL use

	Airport-Season-Branch-Resource	From date	To date	Time
Full Season Rep 1	BHX-S18-SOS Report-Standard	Sun 25-Mar-2018	Sat 27-Oct-2018	UTC
Full Season Rep 2	BHX-S18-Live-Standard	Sun 25-Mar-2018	Sat 27-Oct-2018	UTC
Full Season Rep 3	BHX-S19-SOS Report-Standard	Sun 31-Mar-2019	Sat 26-Oct-2019	UTC
	Airport-Season-Branch-Resource	From date	To date	Time
Peak Week Rep 1	BHX-S18-SOS Report-Standard	Mon 03-Sep-2018	Sun 09-Sep-2018	UTC
Peak Week Rep 2	BHX-S18-Live-Standard	Mon 11-Jun-2018	Sun 17-Jun-2018	UTC
Peak Week Rep 3	BHX-S19-SOS Report-Standard	Mon 12-Aug-2019	Sun 18-Aug-2019	UTC