

AUCKLAND INTERNATIONAL AIRPORT

AKL

S19 Start of Season Report (International Traffic)

Key Statistics	S18 Operated	S19 -Season Start	Percentage Change
Air Transport Movements	31,583	31,607	▲ 0.1%
Total Seats	7,623,777	7,764,124	▲ 1.8%
Seats per Passenger ATM	241	246	

Contents

	Page
Movements and Seats by Service Type	2
Week Departure Frequencies by Carrier	3-6
Top 10 Airlines by ATM's and Seats	7
Top 20 Destinations by ATM's and Seats	8
International Terminal - Passengers per 60 Minutes	9-10
International Arrivals - Passengers per 30 Minutes	11
Glossary	12

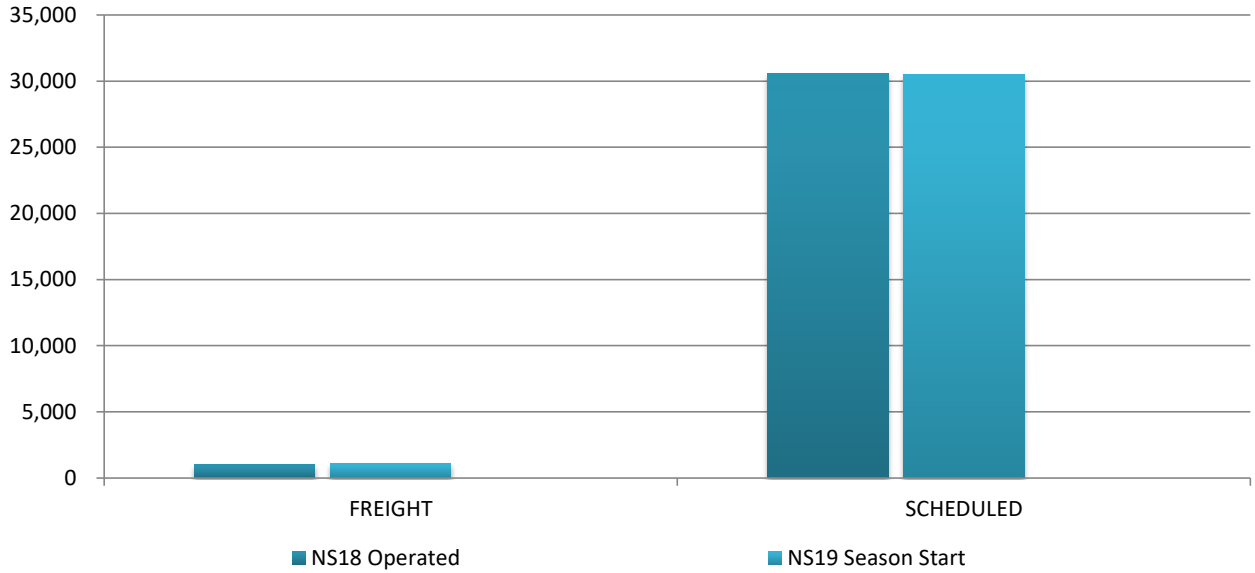
****S18 numbers adjusted down to 31 weeks to match S19**

Data in this report is current as of 22 March 2019

No warranty whether expressed or implied as to the completeness, accuracy, fitness for purpose, or satisfactory quality is given by ACL regarding the information in this report, which is provided by third parties. Accordingly, ACL excludes all liability with regard to such data.

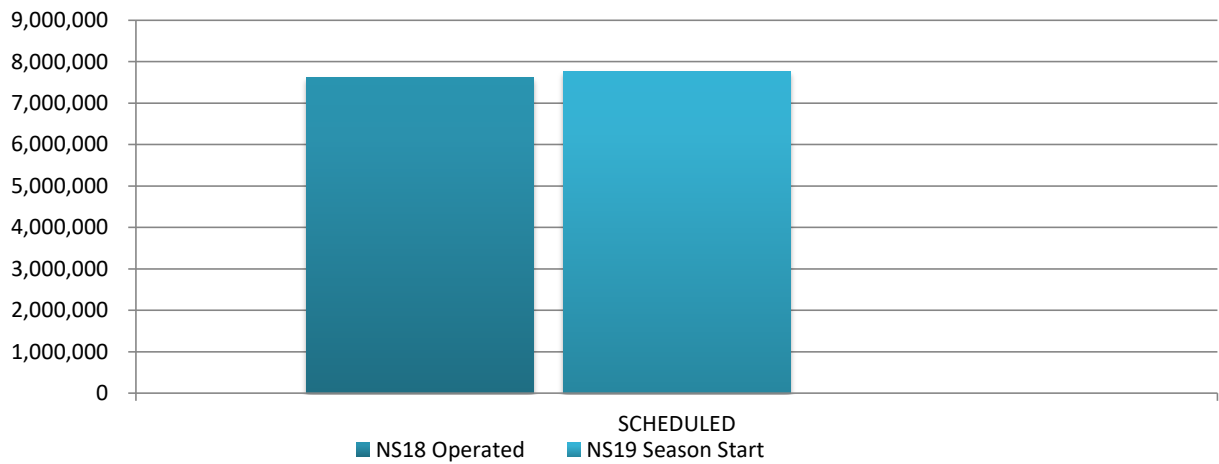
The contents of this report may not be reproduced without the written consent of ACL.

Full Season ATMs by Service Type



	NS18 Operated	NS19 Season Start	Percentage Change
FREIGHT	1,009	1,119	▲ 11%
SCHEDULED	30,574	30,488	▲ -0.3%
TOTAL	31,583	31,607	▲ 0.1%

Full Season Seats by Service Type



	NS18 Operated	NS19 Season Start	Percentage Change
SCHEDULED	7,623,777	7,764,124	▲ 1.8%
TOTAL	7,623,777	7,764,124	▲ 1.8%

AUCKLAND INTERNATIONAL AIRPORT

PEAK WEEK DEPARTURE FREQUENCIES - BY CARRIER

	OPERATOR	AIRPORT		S18		S19		SEATS +/-	ATMS +/-
				SEATS	ATMS	SEATS	ATMS		
3U	Sichuan Airlines	CTU	Chengdu	900	3	900	3	0	0
3U Total				900	3	900	3	0	0
CA	Air China	PEK	Beijing Capital	1,172	4	1,172	4	0	0
CA Total				1,172	4	1,172	4	0	0
CI	China Airlines	TPE	Taipei Chiang Kai Shek	2,142	7	2,142	7	0	0
CI Total				2,142	7	2,142	7	0	0
CX	Cathay Pacific	HKG	Hong Kong Int'L	1,960	7	1,960	7	0	0
CX Total				1,960	7	1,960	7	0	0
CZ	China Southern Airlines	CAN	Guangzhou Baiyun	2,247	10	2,907	10	660	0
CZ Total				2,247	10	2,907	10	660	0
D7	AirAsiaX	OOL	Gold Coast Coolangatta	2,639	7	0	0	-2,639	-7
D7 Total				2,639	7	0	0	-2,639	-7
EK	Emirates	DXB	Dubai	5,915	14	5,915	14	0	0
EK Total				5,915	14	5,915	14	0	0
FJ	Fiji Airways	NAN	Nadi International	2,744	14	2,811	13	67	-1
		SUV	Nausori International Airport	408	3	408	3	0	0
FJ Total				3,152	17	3,219	16	67	-1
FX	Fedex	CAN	Guangzhou Baiyun	0	1	0	1	0	0
		SYD	Sydney Kingsford Smith	0	0	0	1	0	1
FX Total				0	1	0	2	0	1
GS	Tianjin Airlines	TSN	Tianjin	260	1	0	0	-260	-1
GS Total				260	1	0	0	-260	-1
HA	Hawaiian Airlines	HNL	Honolulu International	1,390	5	1,390	5	0	0
HA Total				1,390	5	1,390	5	0	0
HJ	Tasman Pacific (DHL)	SYD	Sydney Kingsford Smith	0	5	0	5	0	0
HJ Total				0	5	0	5	0	0
HU	Hainan Airlines	SZX	Shenzhen	584	2	584	2	0	0
HU Total				584	2	584	2	0	0
HX	Hong Kong Airlines	HKG	Hong Kong Int'L	1,981	7	0	0	-1,981	-7
HX Total				1,981	7	0	0	-1,981	-7
JQ	Jetstar Airways	MEL	Melbourne	1,440	8	1,302	7	-138	-1
		OOL	Gold Coast Coolangatta	1,260	7	1,302	7	42	0

AUCKLAND INTERNATIONAL AIRPORT

PEAK WEEK DEPARTURE FREQUENCIES - BY CARRIER

OPERATOR		AIRPORT		S18		S19		SEATS +/-		ATMS +/-	
				SEATS	ATMS	SEATS	ATMS	SEATS +/-	ATMS +/-		
		RAR	Rarotonga	540	3	1,116	6	576	3		
		SYD	Sydney Kingsford Smith	1,260	7	1,302	7	42	0		
JQ Total				4,500	25	5,022	27	522	2		
KE	Korean Air	ICN	Seoul Incheon Intl	992	4	1,345	5	353	1		
KE Total				992	4	1,345	5	353	1		
LA	Lan Airlines	SCL	Santiago Arturo Merino Benitez	1,729	7	2,128	7	399	0		
		SYD	Sydney Kingsford Smith	1,729	7	2,128	7	399	0		
LA Total				3,458	14	4,256	14	798	0		
MH	Malaysia Airlines	KUL	Kuala Lumpur Int'L	2,009	7	2,009	7	0	0		
MH Total				2,009	7	2,009	7	0	0		
MU	China Eastern Airlines	PVG	Shanghai Pu Dong	1,834	7	1,834	7	0	0		
MU Total				1,834	7	1,834	7	0	0		
NF	Air Vanuatu	VLJ	Vanuatu	680	4	756	6	76	2		
NF Total				680	4	756	6	76	2		
NZ	Air New Zealand	ADL	Adelaide	1,104	4	1,218	4	114	0		
		APW	Apia Faleolo	2,548	11	2,704	11	156	0		
		BNE	Brisbane International	4,380	19	4,232	17	-148	-2		
		CNS	Cairns	1,310	7	1,462	5	152	-2		
		DPS	Denpasar Bali Ngurah Rai	1,510	5	1,208	4	-302	-1		
		EZE	Buenos Aires Ministro Pistarini	936	3	966	3	30	0		
		HKG	Hong Kong Int'L	2,184	7	2,184	7	0	0		
		HND	Tokyo Haneda	936	3	0	0	-936	-3		
		HNL	Honolulu International	2,562	9	2,114	7	-448	-2		
		IAH	Houston	1,925	7	1,962	6	37	-1		
		IUE	Niue International Airport	336	2	336	2	0	0		
		LAX	Los Angeles International	2,706	8	2,658	8	-48	0		
		LHR	London Heathrow	2,394	7	2,394	7	0	0		
		MCY	Sunshine Coast Airport	672	4	660	4	-12	0		
		MEL	Melbourne	5,902	22	5,903	21	1	-1		
		NAN	Nadi International	4,524	19	4,838	18	314	-1		
		NOU	Noumea	504	3	642	3	138	0		
		NRT	Tokyo Narita	2,114	7	2,114	7	0	0		

AUCKLAND INTERNATIONAL AIRPORT

PEAK WEEK DEPARTURE FREQUENCIES - BY CARRIER

OPERATOR	AIRPORT	S18		S19		SEATS +/-	ATMS +/-		
		SEATS	ATMS	SEATS	ATMS				
	OOL Gold Coast Coolangatta	1,176	7	1,751	8	575	1		
	ORD Chicago O'Hare International	0	0	825	3	825	3		
	PER Perth	1,812	6	2,006	7	194	1		
	PPT Papeete Faa	916	3	862	3	-54	0		
	PVG Shanghai Pu Dong	2,114	7	2,114	7	0	0		
	RAR Rarotonga	2,558	11	2,504	9	-54	-2		
	SFO San Francisco International	2,364	7	1,680	5	-684	-2		
	SGN Ho Chi Minh City	604	2	0	0	-604	-2		
	SIN Singapore Changi	2,114	7	3,489	12	1,375	5		
	SYD Sydney Kingsford Smith	7,840	31	8,543	31	703	0		
	TBU Nuku'Alofa Fua'Amotu Internationa	1,584	6	1,908	8	324	2		
	TPE Taipei Chiang Kai Shek	0	0	906	3	906	3		
	YVR Vancouver	2,184	7	2,184	7	0	0		
NZ Total		63,813	241	66,367	237	2,554	-4		
OL	Samoa Airways	APW	Apia Faleolo	1,190	7	1,323	7	133	0
OL Total				1,190	7	1,323	7	133	0
PR	Philippine Airlines	MNL	Manila	762	3	927	3	165	0
PR Total				762	3	927	3	165	0
QF	Qantas	BNE	Brisbane International	3,463	16	3,297	14	-166	-2
		MEL	Melbourne	6,315	28	5,559	27	-756	-1
		SYD	Sydney Kingsford Smith	7,461	41	7,935	41	474	0
QF Total				17,239	85	16,791	82	-448	-3
QR	Qatar Airways	DOH	Doha	1,813	7	1,904	7	91	0
QR Total				1,813	7	1,904	7	91	0
SB	Aircalin Air Caledonie Int	NOU	Noumea	474	3	474	3	0	0
SB Total				474	3	474	3	0	0
SQ	Singapore Airlines	SIN	Singapore Changi	1,848	12	1,848	14	0	2
SQ Total				1,848	12	1,848	14	0	2
TG	Thai Airways International Public Lt	BKK	Bangkok International	2,324	7	2,086	7	-238	0
TG Total				2,324	7	2,086	7	-238	0
TN	Air Tahiti Nui	LAX	Los Angeles International	882	3	882	3	0	0
TN Total				882	3	882	3	0	0

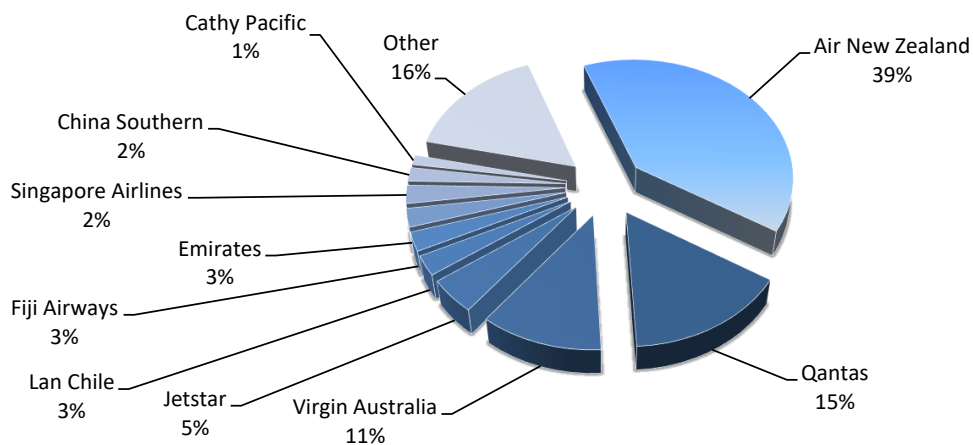
AUCKLAND INTERNATIONAL AIRPORT

PEAK WEEK DEPARTURE FREQUENCIES - BY CARRIER

OPERATOR	AIRPORT	S18		S19		SEATS +/-	ATMS +/-		
		SEATS	ATMS	SEATS	ATMS				
UA	United Airlines	SFO	San Francisco International	0	0	828	3	828	3
UA Total				0	0	828	3	828	3
VA	Virgin Australia	BNE	Brisbane International	2,464	14	2,992	17	528	3
		MEL	Melbourne	2,112	12	2,464	14	352	2
		OOL	Gold Coast Coolangatta	1,232	7	1,232	7	0	0
		RAR	Rarotonga	704	4	880	5	176	1
		SYD	Sydney Kingsford Smith	2,112	12	3,344	19	1,232	7
		TBU	Nuku'Alofa Fua'Amotu Internationa	528	3	528	3	0	0
VA Total				9,152	52	11,440	65	2,288	13

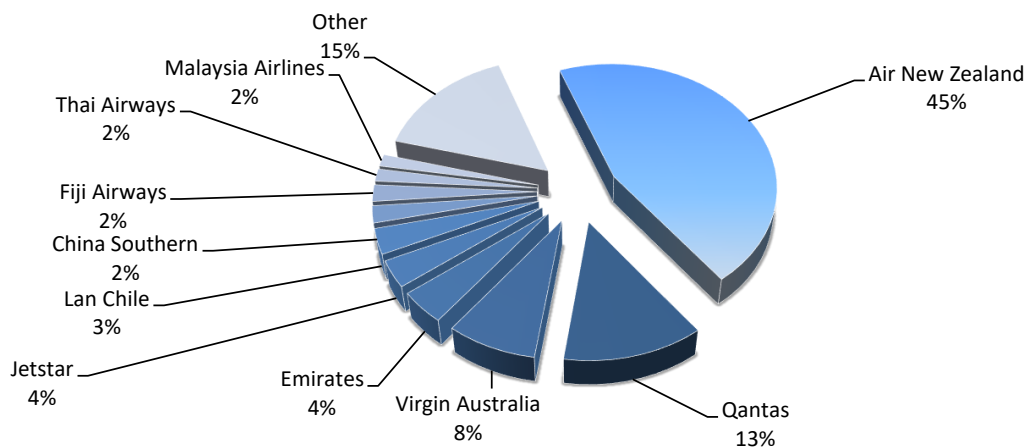
Top 10 Airlines by Air Transport Movements (ATMs)

Airline	Movements
Air New Zealand	12,447
Qantas	4,856
Virgin Australia	3,597
Jetstar	1,459
Lan Chile	840
Fiji Airways	806
Emirates	786
Singapore Airlines	777
China Southern	588
Cathy Pacific	420
Other	5031

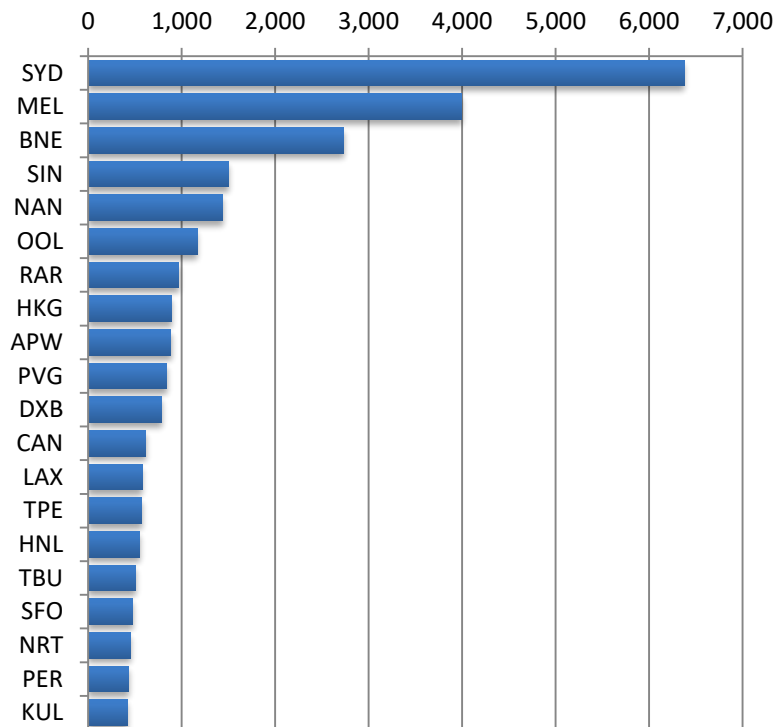


Top 10 Airlines by Air Seats

Airline	Seats
Air New Zealand	3,505,810
Qantas	986,562
Virgin Australia	633,072
Emirates	333,866
Jetstar	271,374
Lan Chile	255,360
China Southern	171,108
Fiji Airways	166,910
Thai Airways	125,160
Malaysia Airlines	120,540
Other	1,194,362

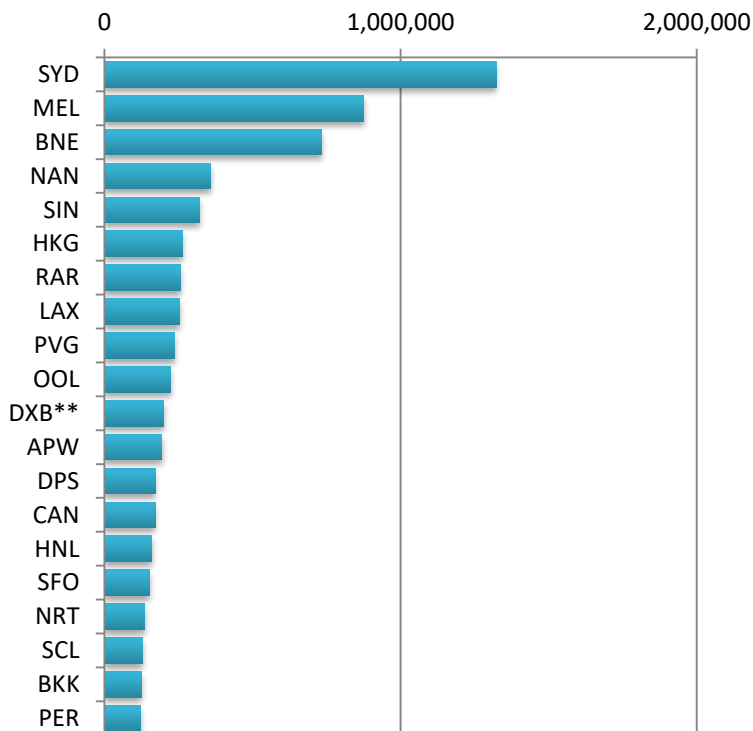


Air Transport Top 20 Movements by Destination



Destination	ATM'S
SYD	6,375
MEL	3,990
BNE	2,734
SIN	1,502
NAN	1,436
OOL	1,166
RAR	969
HKG	891
APW	886
PVG	840
DXB	786
CAN	618
LAX	577
TPE	570
HNL	548
TBU	507
SFO	479
NRT	452
PER	432
KUL	420

Air Transport Top 20 Seats by Destination

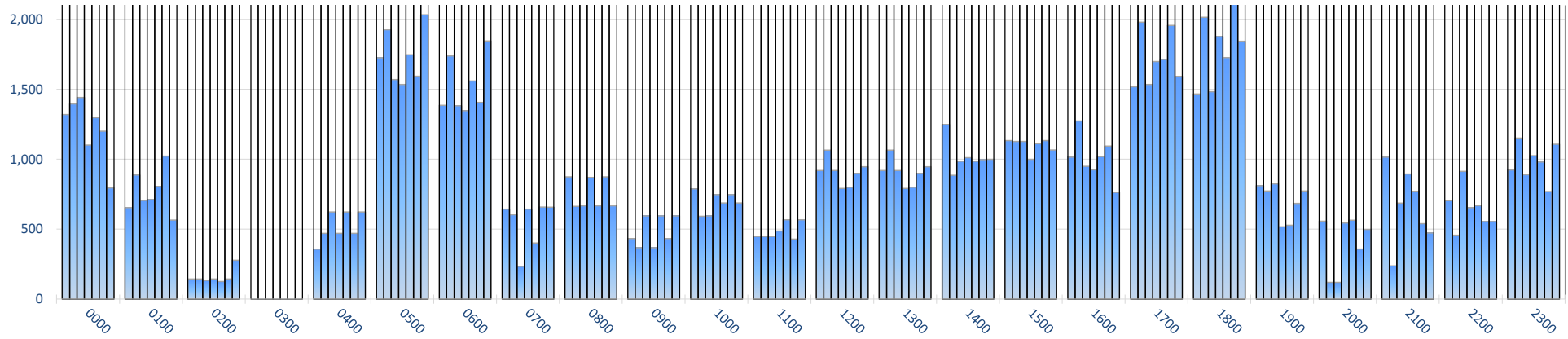


Destination	SEATS
SYD	1,322,342
MEL	875,028
BNE	731,515
NAN	357,854
SIN	320,736
HKG	262,741
RAR	257,175
LAX	252,623
PVG	236,772
OOL	224,060
DXB**	199,346
APW	194,162
DPS	171,364
CAN	171,108
HNL	159,542
SFO	151,502
NRT	136,384
SCL	127,680
BKK	125,160
PER	122,904

** EK DXB Direct service

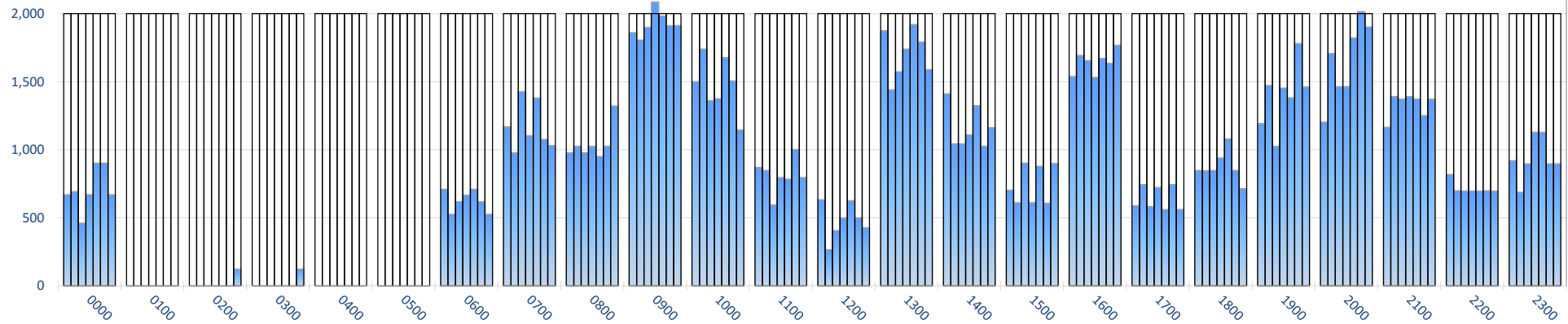
INTERNATIONAL TERMINAL ARRIVALS (PER 60 MINUTES, ROLLING EVERY 5 MINUTES)

Week Movements per Hour - All times LOCAL



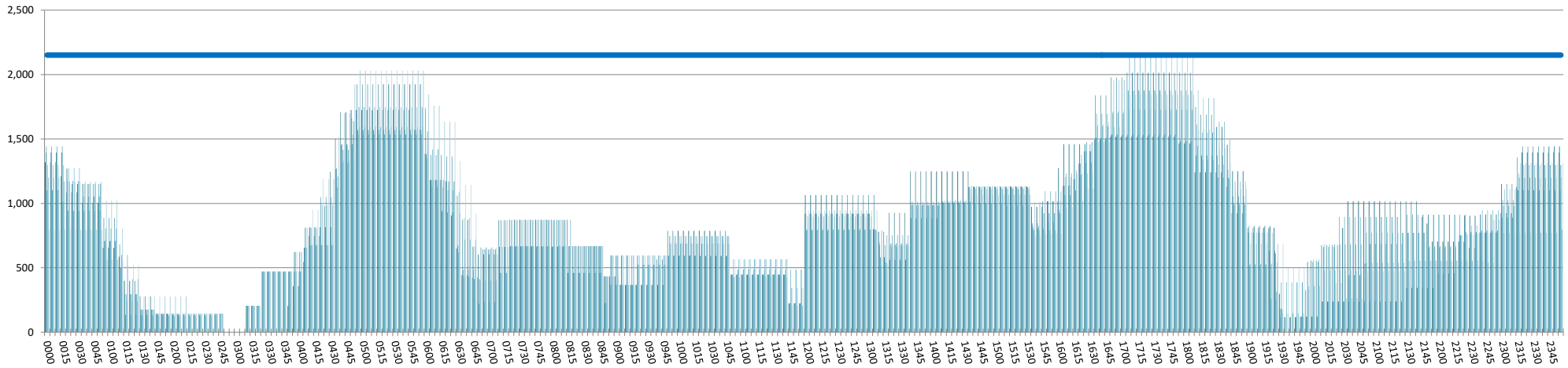
INTERNATIONAL TERMINAL DEPARTURES (PER 60 MINUTES, ROLLING EVERY 5 MINUTES)

Week Movements per Hour - All times LOCAL



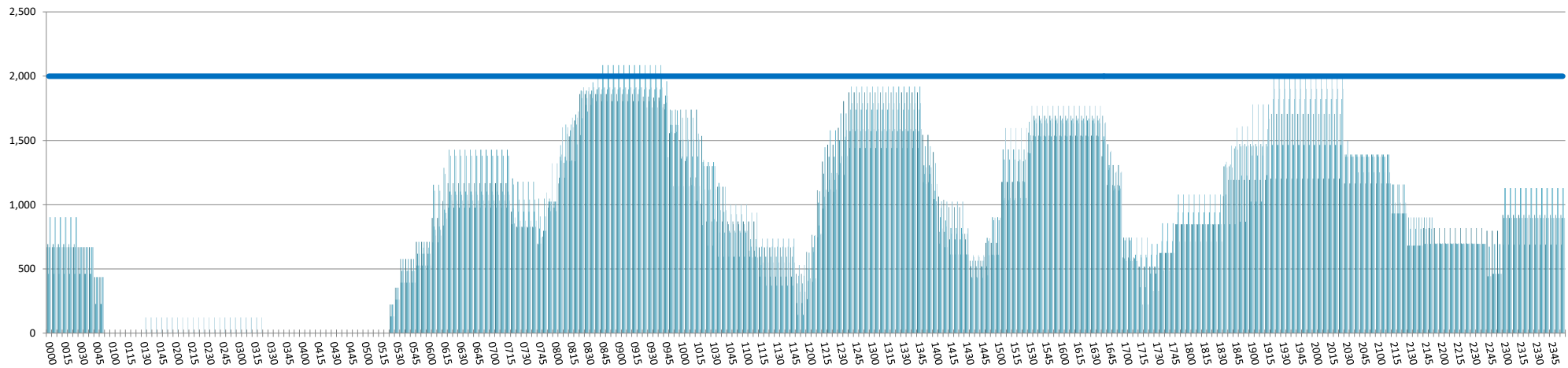
INTERNATIONAL TERMINAL ARRIVALS (PER 60 MINUTES, ROLLING EVERY 5 MINUTES)

Week Movements per Hour - All times LOCAL



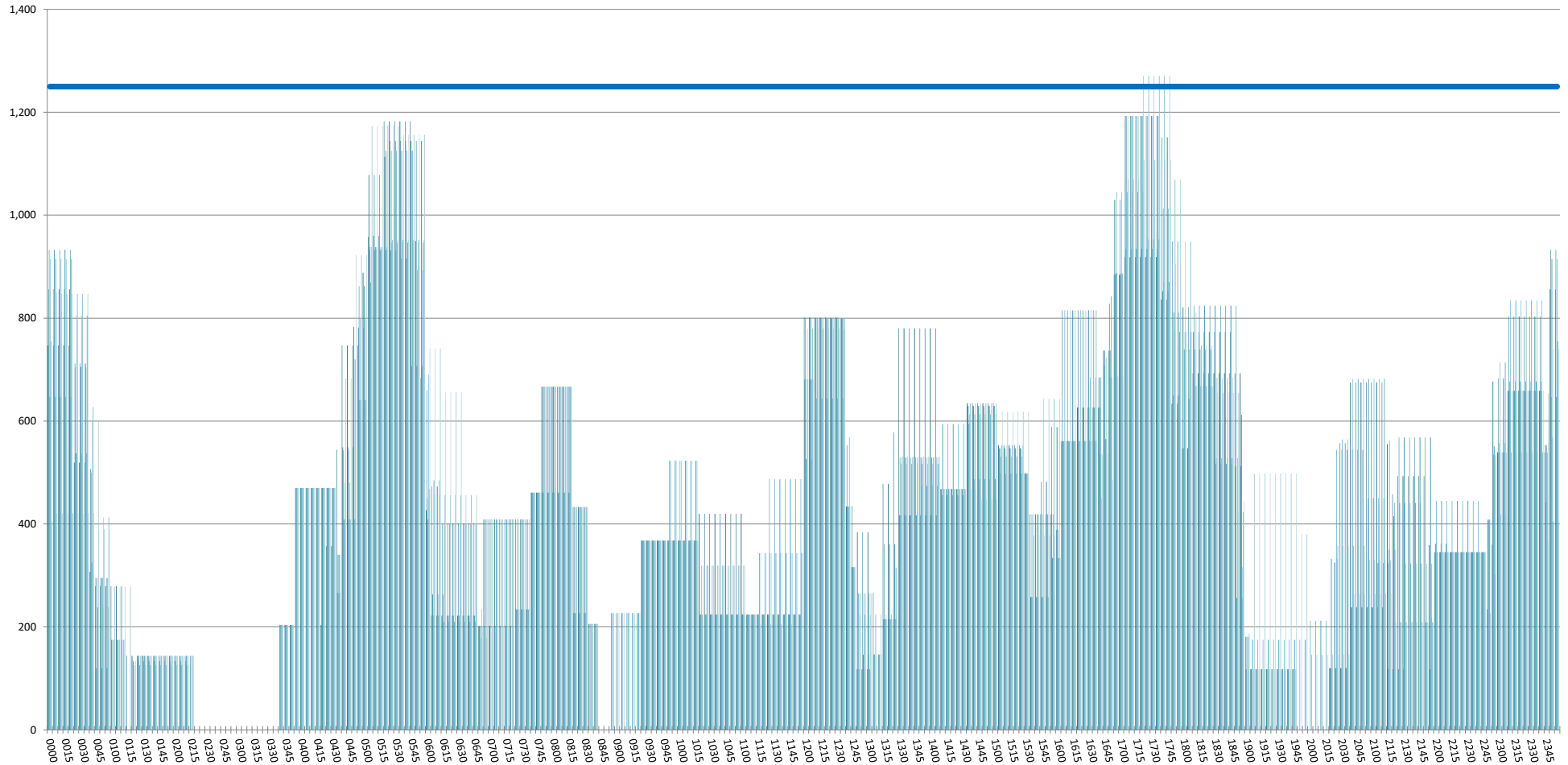
INTERNATIONAL TERMINAL DEPARTURES (PER 60 MINUTES, ROLLING EVERY 5 MINUTES)

Week Movements per Hour - All times LOCAL



INTERNATIONAL TERMINAL ARRIVALS (PER 30 MINUTES, ROLLING EVERY 5 MINUTES)

Week Movements - All times LOCAL



GLOSSARY OF TERMS

Air Transport Movement (ATM)	A scheduled or charter passenger or freight aircraft movement.
Allocation	The allocation of slots such that demand is constrained to fit within declared scheduling limits.
Common Travel Area (CTA)	Services to or from the Republic of Ireland and the Channel Islands.
Demand	The unconstrained demand for slots, prior to any schedule adjustments.
Passenger ATM	A scheduled or charter <u>passenger</u> aircraft movement (ie, excluding all-cargo aircraft movements).
Scheduling Limits	Limiting parameters declared by the Airport Operator used in the coordination process.
Seats	The number of seats based on the aircraft configuration advised by the airline.
Average Week	Peak Week for S19 is 15 to 21 July 2019
Data Snapshot	All data used for this report was as held 22 March 2019

GUIDE TO HISTOGRAMS

The histograms show the pattern of traffic by time of day against the appropriate scheduling limit. Each time period consist of seven columns representing the days-of-week, Monday through Sunday.