

QUEENSTOWN INTERNATIONAL AIRPORT

ZQN

W18 Start of Season Report

Key Statistics	W17 Operated	W18 Season Start	Percentage Change
Air Transport Movements	7,193	8,361	▲ 16%
Total Seats	1,170,283	1,363,164	▲ 16%
Seats per Passenger ATM	163	163	

Contents	Page
Airline Rank by ATM's and Seats	2
Aircraft Type Rankings by ATM's and Seats	3
Peak Week Departure Frequencies by Carrier	4
Destination Rankings by ATM's and Seats	5
Runway Peak Week Utilisation	6
Domestic Terminal Peak Week Utilisation	7
International Terminal Peak Week Utilisation	8
Total Terminal Peak Week Utilisation	9
Glossary	10

****W17 numbers adjusted up to 22 weeks to match W18**

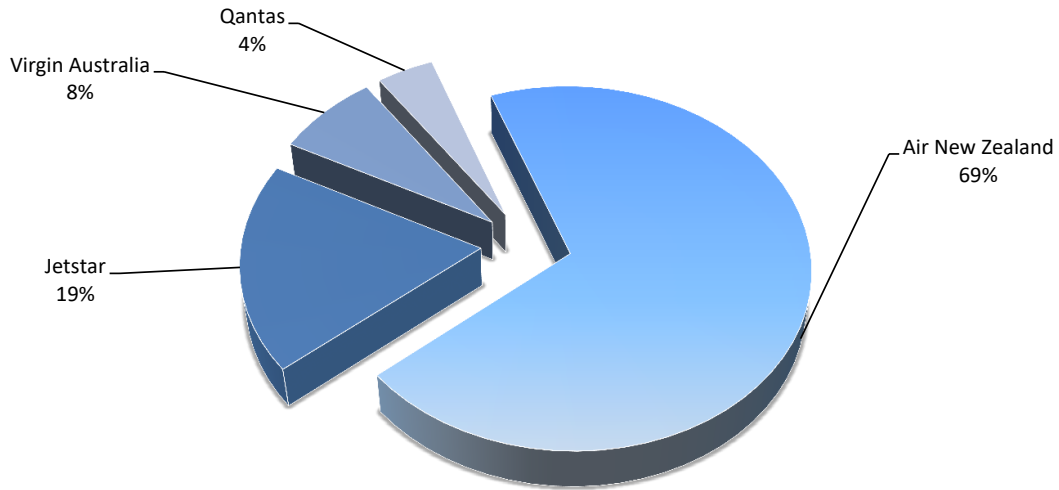
Data in this report is current as of 18 October 2018

No warranty whether expressed or implied as to the completeness, accuracy, fitness for purpose, or satisfactory quality is given by ACL regarding the information in this report, which is provided by third parties. Accordingly, ACL excludes all liability with regard to such data.

The contents of this report may not be reproduced without the written consent of ACL.

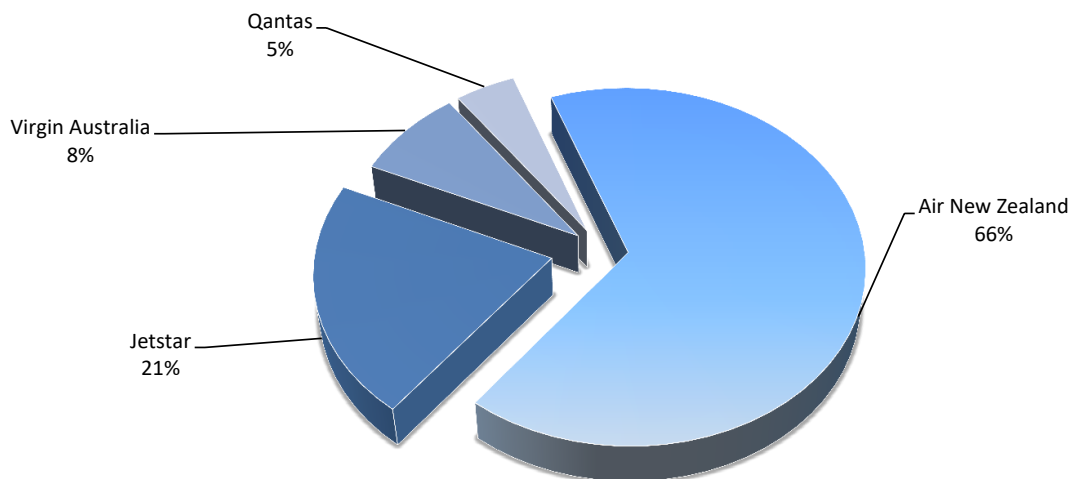
Airlines by Air Transport Movements (ATMs)

Airline	Movements
Air New Zealand	5,817
Jetstar	1,554
Virgin Australia	640
Qantas	350



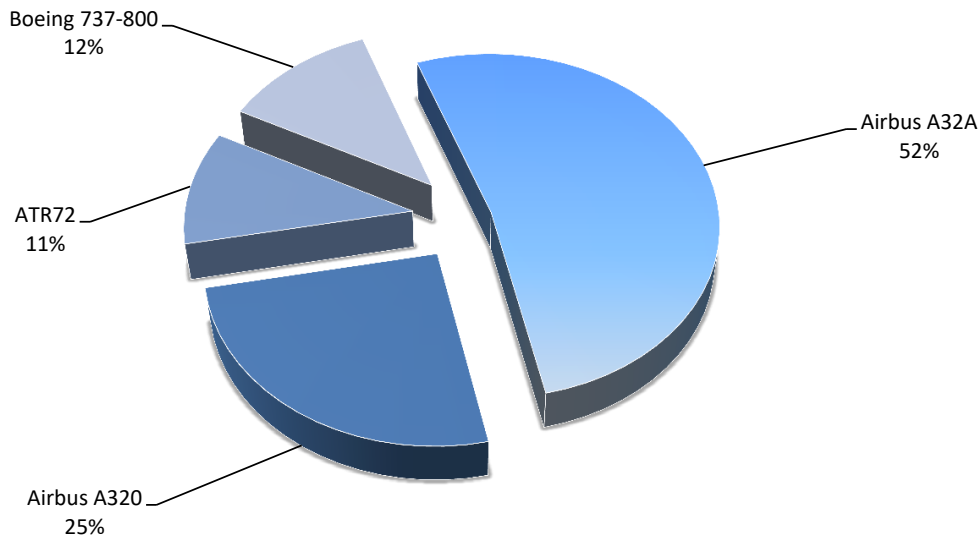
Airlines by Seats

Airline	Seats
Air New Zealand	900,580
Jetstar	289,044
Virgin Australia	112,640
Qantas	60,900



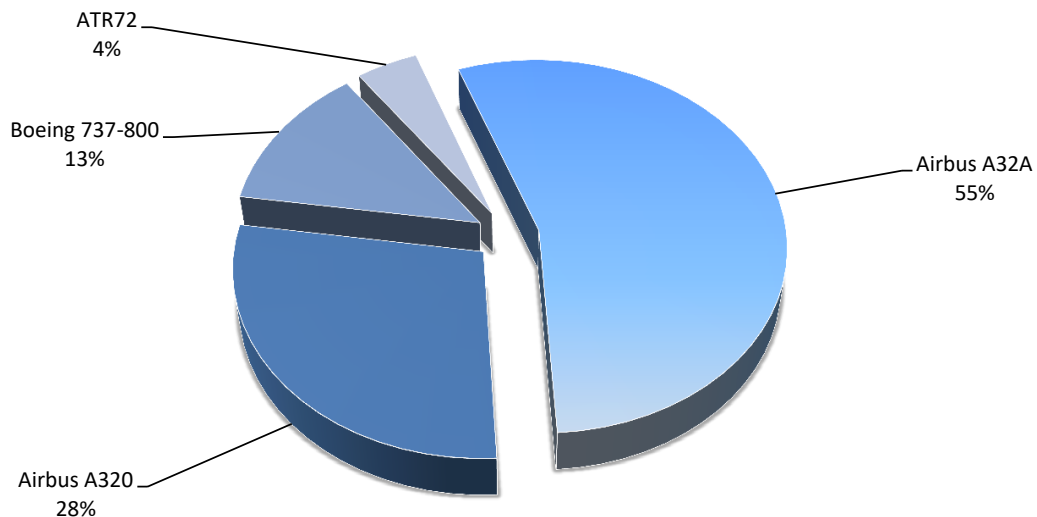
Aircraft Types by Air Transport Movements (ATMs)

Airline	Movements
Airbus A32A	4,357
Airbus A320	2,124
ATR72	890
Boeing 737-800	990



Aircraft types by seats

Airline	Seats
Airbus A32A	744,876
Airbus A320	384,636
Boeing 737-800	173,540
ATR72	60,112

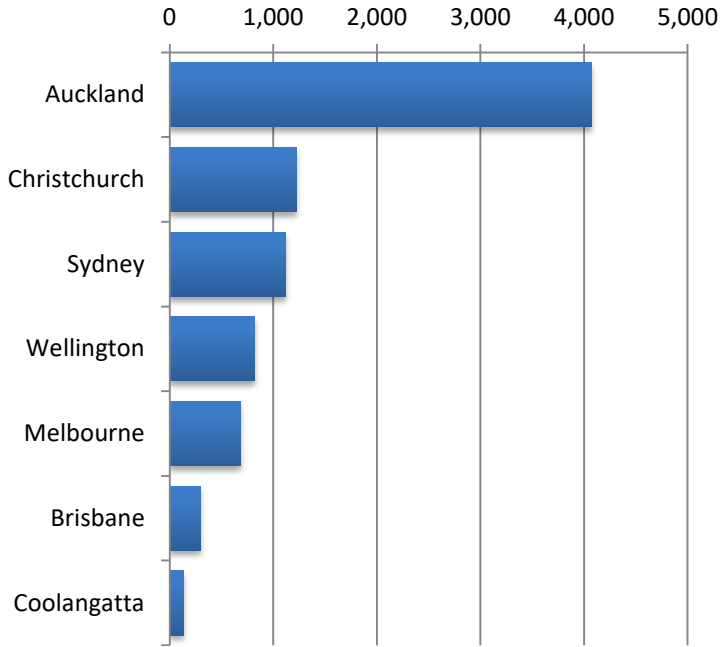


QUEENSTOWN INTERNATIONAL AIRPORT

PEAK WEEK DEPARTURE FREQUENCIES - BY CARRIER

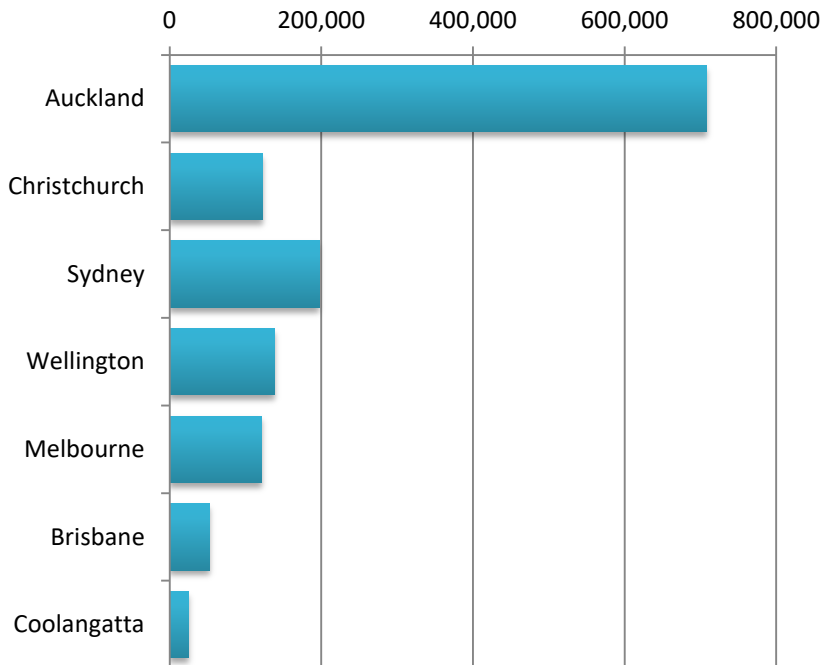
OPERATOR	AIRPORT	W17		W18		SEATS +/-	ATMS +/-		
		SEATS	ATMS	SEATS	ATMS				
JQ	Jetstar	AKL	Auckland International	2,880	16	3,534	19	654	3
		MEL	Melbourne	1,260	7	1,302	7	42	0
		OOL	Gold Coast Coolangatta	540	3	558	3	18	0
		SYD	Sydney Kingsford Smith	1,260	7	1,302	7	42	0
		WLG	Wellington International	0	0	558	3	558	3
JQ Total				5,940	33	7,254	39	1,314	6
NZ	Air New Zealand	AKL	Auckland International	12,138	71	14,706	86	2,568	15
		BNE	Brisbane International	0	0	672	4	672	4
		CHC	Christchurch International	3,175	27	2,660	27	-515	0
		MEL	Melbourne	1,344	8	1,344	8	0	0
		SYD	Sydney Kingsford Smith	1,344	8	1,176	7	-168	-1
	WLG	Wellington International	1,982	14	2,633	16	651	2	
NZ Total				19,983	128	23,191	148	3,208	20
QF	Qantas	SYD	Sydney Kingsford Smith	1,218	7	2,436	14	1,218	7
QF Total				1,218	7	2,436	14	1,218	7
VA	Virgin Australia	BNE	Brisbane International	1,232	7	1,232	7	0	0
		MEL	Melbourne	0	0	880	5	880	5
		SYD	Sydney Kingsford Smith	1,056	6	1,232	7	176	1
VA Total				2,288	13	3,344	19	1,056	6

Air Transport Movements by Destination



Destination	ATM'S
Auckland	4,073
Christchurch	1,225
Sydney	1,118
Wellington	824
Melbourne	682
Brisbane	302
Coolangatta	132

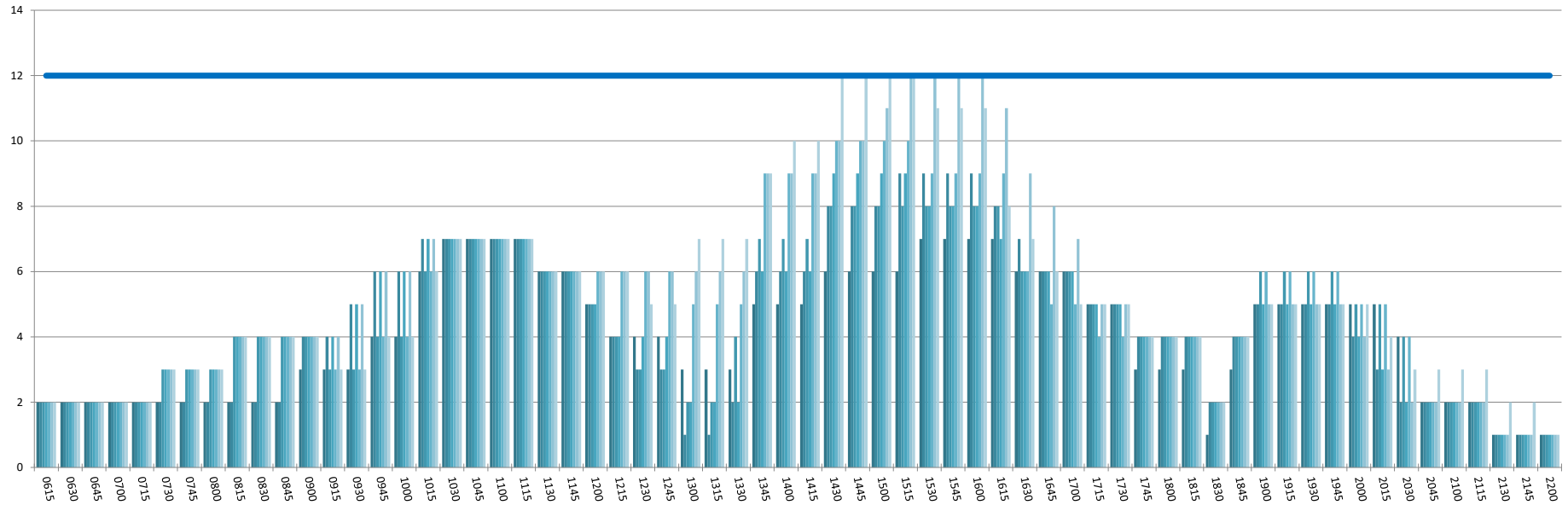
Air Transport Seats by Destination



Destination	SEATS
Auckland	707,526
Christchurch	121,964
Sydney	197,068
Wellington	138,490
Melbourne	120,888
Brisbane	52,336
Coolangatta	24,552

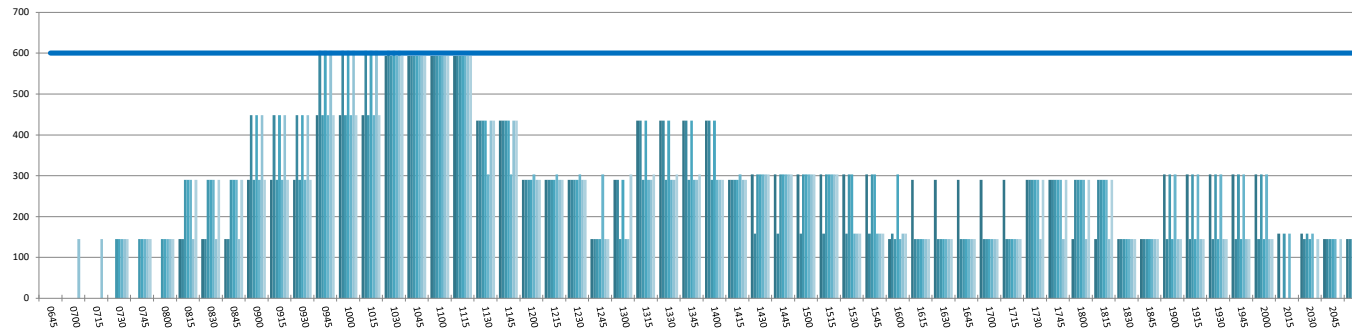
RUNWAY TOTAL UTILISATION PER 60 MINUTES (ROLLING EVERY 15 MINUTES)

Peak Week Movements per Hour - (17 to 23 Dec 2018) - All times LOCAL



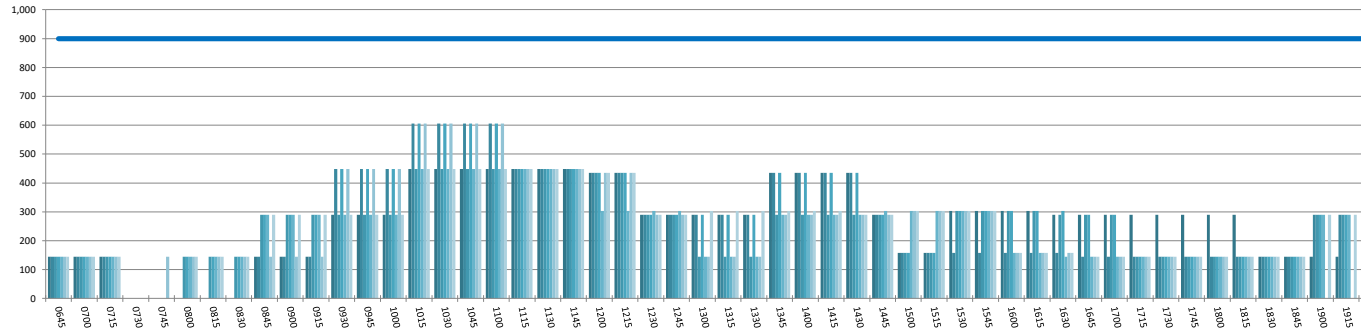
DOMESTIC TERMINAL ARRIVALS UTILISATION PER 60 MINUTES (ROLLING EVERY 15 MINUTES)

Peak Week Movements per Hour - All times LOCAL



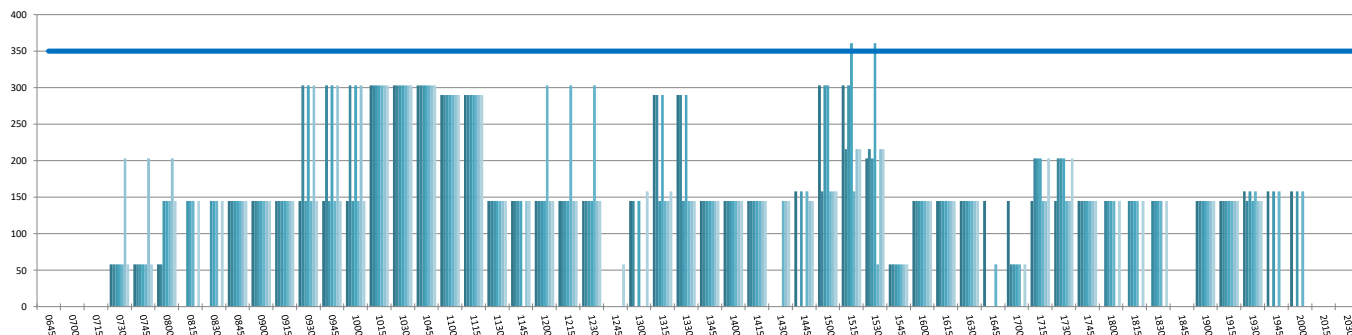
DOMESTIC TERMINAL DEPARTURES UTILISATION PER 60 MINUTES (ROLLING EVERY 15 MINUTES)

Peak Week Movements per Hour - All times LOCAL



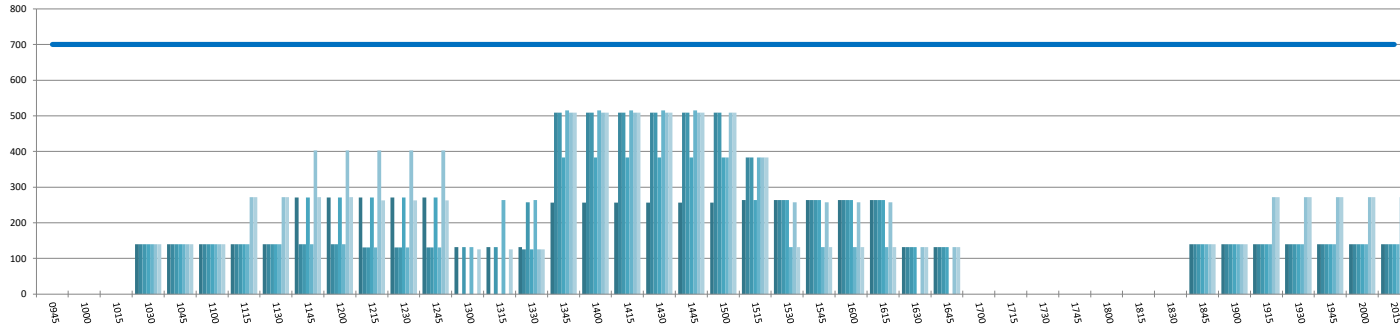
DOMESTIC TERMINAL ARRIVALS UTILISATION PER 30 MINUTES (ROLLING EVERY 15 MINUTES)

Peak Week Movements per Hour - All times LOCAL



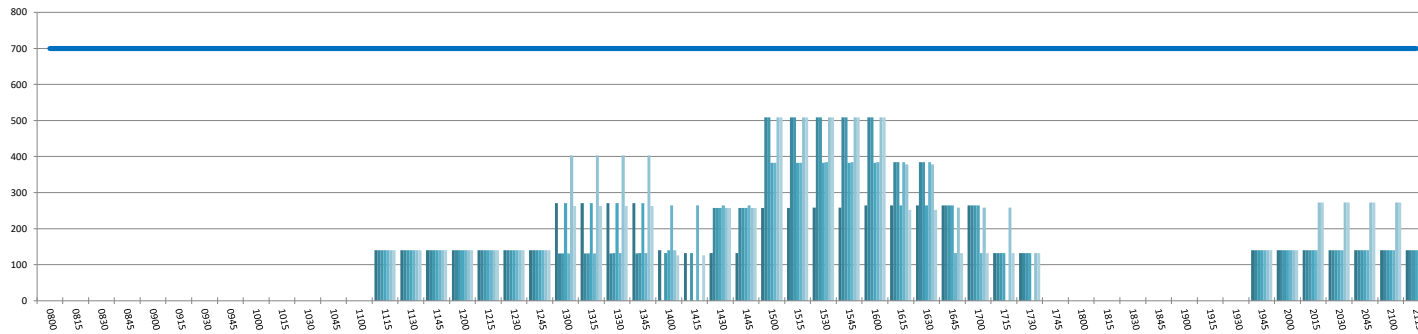
INTERNATIONAL TERMINAL ARRIVALS UTILISATION PER 60 MINUTES (ROLLING EVERY 15 MINUTES)

Peak Week Movements per Hour - All times LOCAL



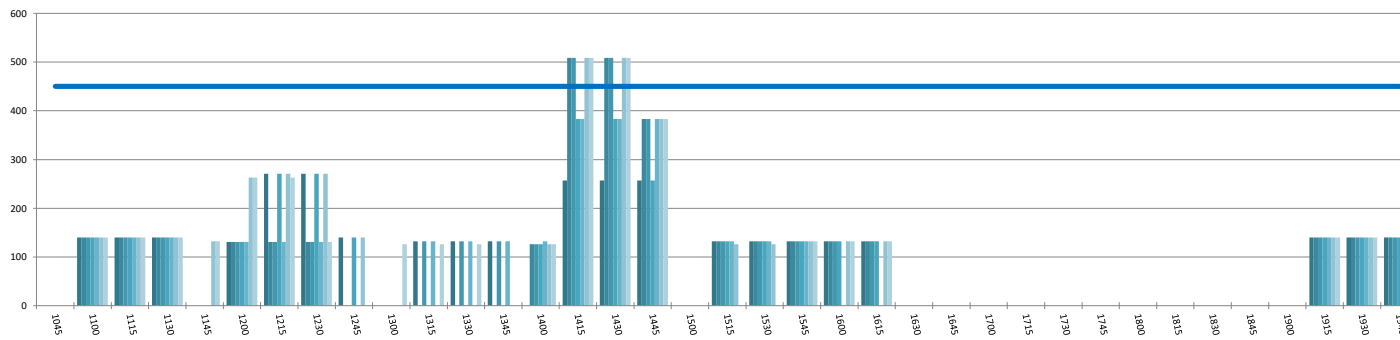
INTERNATIONAL TERMINAL DEPARTURES UTILISATION PER 60 MINUTES (ROLLING EVERY 15 MINUTES)

Peak Week Movements per Hour - All times LOCAL



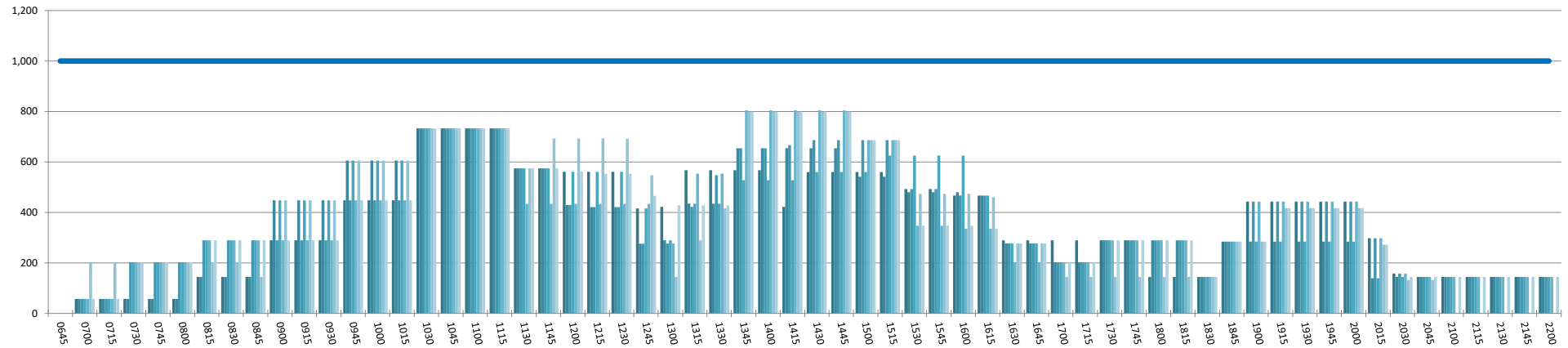
INTERNATIONAL TERMINAL ARRIVALS UTILISATION PER 30 MINUTES (ROLLING EVERY 15 MINUTES)

Peak Week Movements per Hour - All times LOCAL



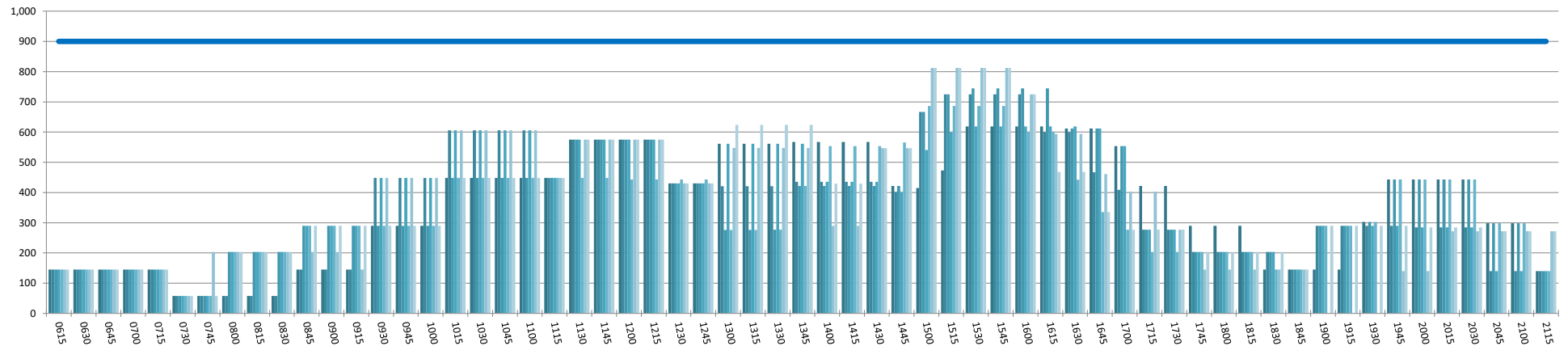
ENTIRE TERMINAL PASSENGER ARRIVALS UTILISATION PER 60 MINUTES (ROLLING EVERY 15 MINUTES)

Peak Week Movements per Hour - All times LOCAL



ENTIRE TERMINAL PASSENGER DEPARTURES UTILISATION PER 60 MINUTES (ROLLING EVERY 15 MINUTES)

Peak Week Movements per Hour - All times LOCAL



GLOSSARY OF TERMS

Air Transport Movement (ATM)	A scheduled or charter passenger or freight aircraft movement.
Allocation	The allocation of slots such that demand is constrained to fit within declared scheduling limits.
Common Travel Area (CTA)	Services to or from the Republic of Ireland and the Channel Islands.
Passenger ATM	A scheduled or charter <u>passenger</u> aircraft movement (ie, excluding all-cargo aircraft movements).
Scheduling Limits	Limiting parameters declared by the Airport Operator used in the coordination process.
Seats	The number of seats based on the aircraft configuration advised by the airline.
Peak Week	07 to 13 Jan 2019
Data Snapshot	All data used for this report was as held 18 October 2018

GUIDE TO HISTOGRAMS

The histograms show the pattern of traffic by time of day against the appropriate scheduling limit. Each time period consist of seven columns representing the days-of-week, Monday through Sunday.