

### Start of Season Report

Report Date: Fri 26-Oct-2018

#### Headlines

	W18 Start	vs. W17 Start	vs. W17 End
Total Air Transport Movements (Passenger & Freight)	73,896	▲ 6.4%	▲ 14.6%
Total Passenger Air Transport Movements	72,080	▲ 6.4%	▲ 14.9%
Total Passenger Air Transport Movement Seats	9,456,981	▲ 6.2%	▲ 20.2%
Average Seats per Passenger Air Transport Movement	131	▼ -0.2%	▲ 4.6%
Percentage of allocated slots cleared as requested (OK)	95%		

#### Contents

Page	Content
2	Runway Scheduling Limits
3	ATM Allocation by Operator (Full season and Peak Week Comparison)
4	Peak Week - Allocation and Slot Adjustment Distribution by Operator
5	Significant Route Changes
6	Full Season - ATM Analysis
7	Full Season - PATM Seats Analysis
8	Full Season - Terminal Analysis
9	Full Season - Aircraft Size Analysis
10	Full Season - Seasonality
11	Peak Week - Hourly Runway Demand
12	Peak Week - Hourly Runway Allocation
13	Peak Week - Hourly Runway Allocation Comparison (W18 Start vs. W17 Start)
14	Peak Week - Hourly Runway Allocation Comparison (W18 Start vs. W17 End)
15	Peak Week Histogram - Arrival Movements (R10) - All Terminals - All Operators
16	Peak Week Histogram - Arrival Movements (R10) - All Terminals - All Operators
17	Peak Week Histogram - Arrival Movements (R10) - All Terminals - All Operators
18	Peak Week Histogram - Departure Movements (R10) - All Terminals - All Operators
19	Peak Week Histogram - Departure Movements (R10) - All Terminals - All Operators
20	Peak Week Histogram - Arrival Passengers (T60/10) - Schengen - All Operators
21	Peak Week Histogram - Arrival Passengers (T60/10) - Schengen - All Operators
22	Peak Week Histogram - Departure Passengers (T60/10) - Schengen - All Operators
23	Peak Week Histogram - Departure Passengers (T60/10) - Schengen - All Operators
24	Peak Week Histogram - Arrival Passengers (T60/10) - Non-Schengen - All Operators
25	Peak Week Histogram - Arrival Passengers (T60/10) - Non-Schengen - All Operators
26	Peak Week Histogram - Departure Passengers (T60/10) - Non-Schengen - All Operators
27	Peak Week Histogram - Departure Passengers (T60/10) - Non-Schengen - All Operators
28	Peak Week Histogram - Arrival Passengers (T30/10) - Non-Schengen - All Operators
29	Peak Week Histogram - Arrival Passengers (T30/10) - Non-Schengen - All Operators
30	Peak Week Histogram - Departure Passengers (T30/10) - Non-Schengen - All Operators
31	Peak Week Histogram - Departure Passengers (T30/10) - Non-Schengen - All Operators
32	Peak Week Histogram - Arrival Passengers (T60/10) - All Terminals - All Operators
33	Peak Week Histogram - Arrival Passengers (T60/10) - All Terminals - All Operators
34	Peak Week Histogram - Departure Passengers (T60/10) - All Terminals - All Operators
35	Peak Week Histogram - Departure Passengers (T60/10) - All Terminals - All Operators
36	Coordinated vs Actual Night Movements
37	Glossary

W17 scheduling season runs from Sun 29-Oct-2017 to Sat 24-Mar-2018 (147 days).

W18 scheduling season runs from Sun 28-Oct-2018 to Sat 30-Mar-2019 (154 days).

W17 full season data is adjusted by a factor of 1.04762 in order to directly compare against W18 full season data.

#### Disclaimer

No warranty whether expressed or implied as to the completeness, accuracy, fitness for purpose, or satisfactory quality is given by ACL regarding the information in this report, which is provided by third parties. Accordingly, ACL excludes all liability with regard to such data.

The contents of this report may not be reproduced without the written consent of ACL.

# Runway Scheduling Limits



## Declared Hourly Movement Capacity

W17 Arrivals								Change: W17 to W18								W18 Arrivals							
Hour	Mon	Tue	Wed	Thu	Fri	Sat	Sun	Hour	Mon	Tue	Wed	Thu	Fri	Sat	Sun	Hour	Mon	Tue	Wed	Thu	Fri	Sat	Sun
UTC	1	2	3	4	5	6	7	UTC	1	2	3	4	5	6	7	UTC	1	2	3	4	5	6	7
00	26	26	26	26	26	26	26	00								00	26	26	26	26	26	26	26
01	26	26	26	26	26	26	26	01								01	26	26	26	26	26	26	26
02	26	26	26	26	26	26	26	02								02	26	26	26	26	26	26	26
03	26	26	26	26	26	26	26	03								03	26	26	26	26	26	26	26
04	26	26	26	26	26	26	26	04								04	26	26	26	26	26	26	26
05	26	26	26	26	26	26	26	05	2	2	2	2	2	2	2	05	28	28	28	28	28	28	28
06	26	26	26	26	26	26	26	06								06	26	26	26	26	26	26	26
07	26	26	26	26	26	26	26	07								07	26	26	26	26	26	26	26
08	26	26	26	26	26	26	26	08								08	26	26	26	26	26	26	26
09	26	26	26	26	26	26	26	09								09	26	26	26	26	26	26	26
10	26	26	26	26	26	26	26	10								10	26	26	26	26	26	26	26
11	26	26	26	26	26	26	26	11	2	2	2	2	2	2	2	11	28	28	28	28	28	28	28
12	26	26	26	26	26	26	26	12								12	26	26	26	26	26	26	26
13	26	26	26	26	26	26	26	13								13	26	26	26	26	26	26	26
14	26	26	26	26	26	26	26	14	2	2	2	2	2	2	2	14	28	28	28	28	28	28	28
15	26	26	26	26	26	26	26	15								15	26	26	26	26	26	26	26
16	26	26	26	26	26	26	26	16								16	26	26	26	26	26	26	26
17	26	26	26	26	26	26	26	17								17	26	26	26	26	26	26	26
18	26	26	26	26	26	26	26	18								18	26	26	26	26	26	26	26
19	26	26	26	26	26	26	26	19								19	26	26	26	26	26	26	26
20	26	26	26	26	26	26	26	20	2	2	2	2	2	2	2	20	28	28	28	28	28	28	28
21	26	26	26	26	26	26	26	21								21	26	26	26	26	26	26	26
22	26	26	26	26	26	26	26	22								22	26	26	26	26	26	26	26
23	26	26	26	26	26	26	26	23								23	26	26	26	26	26	26	26

W17 Departures								Change: W17 to W18								W18 Departures							
Hour	Mon	Tue	Wed	Thu	Fri	Sat	Sun	Hour	Mon	Tue	Wed	Thu	Fri	Sat	Sun	Hour	Mon	Tue	Wed	Thu	Fri	Sat	Sun
UTC	1	2	3	4	5	6	7	UTC	1	2	3	4	5	6	7	UTC	1	2	3	4	5	6	7
00	28	28	28	28	28	28	28	00								00	28	28	28	28	28	28	28
01	28	28	28	28	28	28	28	01								01	28	28	28	28	28	28	28
02	28	28	28	28	28	28	28	02								02	28	28	28	28	28	28	28
03	28	28	28	28	28	28	28	03								03	28	28	28	28	28	28	28
04	28	28	28	28	28	28	28	04								04	28	28	28	28	28	28	28
05	28	28	28	28	28	28	28	05								05	28	28	28	28	28	28	28
06	28	28	28	28	28	28	28	06	2	2	2	2	2	2	2	06	30	30	30	30	30	30	30
07	28	28	28	28	28	28	28	07								07	28	28	28	28	28	28	28
08	28	28	28	28	28	28	28	08								08	28	28	28	28	28	28	28
09	28	28	28	28	28	28	28	09								09	28	28	28	28	28	28	28
10	28	28	28	28	28	28	28	10								10	28	28	28	28	28	28	28
11	28	28	28	28	28	28	28	11								11	28	28	28	28	28	28	28
12	28	28	28	28	28	28	28	12								12	28	28	28	28	28	28	28
13	28	28	28	28	28	28	28	13								13	28	28	28	28	28	28	28
14	28	28	28	28	28	28	28	14								14	28	28	28	28	28	28	28
15	28	28	28	28	28	28	28	15	2	2	2	2	2	2	2	15	30	30	30	30	30	30	30
16	28	28	28	28	28	28	28	16								16	28	28	28	28	28	28	28
17	28	28	28	28	28	28	28	17								17	28	28	28	28	28	28	28
18	28	28	28	28	28	28	28	18								18	28	28	28	28	28	28	28
19	28	28	28	28	28	28	28	19								19	28	28	28	28	28	28	28
20	28	28	28	28	28	28	28	20								20	28	28	28	28	28	28	28
21	28	28	28	28	28	28	28	21								21	28	28	28	28	28	28	28
22	28	28	28	28	28	28	28	22								22	28	28	28	28	28	28	28
23	28	28	28	28	28	28	28	23								23	28	28	28	28	28	28	28

W17 Totals								Change: W17 to W18								W18 Totals							
Hour	Mon	Tue	Wed	Thu	Fri	Sat	Sun	Hour	Mon	Tue	Wed	Thu	Fri	Sat	Sun	Hour	Mon	Tue	Wed	Thu	Fri	Sat	Sun
UTC	1	2	3	4	5	6	7	UTC	1	2	3	4	5	6	7	UTC	1	2	3	4	5	6	7
00	38	38	38	38	38	38	38	00								00	38	38	38	38	38	38	38
01	38	38	38	38	38	38	38	01								01	38	38	38	38	38	38	38
02	38	38	38	38	38	38	38	02								02	38	38	38	38	38	38	38
03	38	38	38	38	38	38	38	03								03	38	38	38	38	38	38	38
04	38	38	38	38	38	38	38	04								04	38	38	38	38	38	38	38
05	42	42	42	42	42	42	42	05	-2	-2	-2	-2	-2	-2	-2	05	40	40	40	40	40	40	40
06	42	42	42	42	42	42	42	06	-2	-2	-2	-2	-2	-2	-2	06	40	40	40	40	40	40	40
07	38	38	38	38	38	38	38	07								07	38	38	38	38	38	38	38
08	38	38	38	38	38	38	38	08	2	2	2	2	2	2	2	08	40	40	40	40	40	40	40
09	38	38	38	38	38	38	38	09	2	2	2	2	2	2	2	09	40	40	40	40	40	40	40
10	38	38	38	38	38	38	38	10								10	38	38	38	38	38	38	38
11	38	38	38	38	38	38	38	11	4	4	4	4	4	4	4	11	42	42	42	42	42	42	42
12	38	38	38	38	38	38	38	12	2	2	2	2	2	2	2	12	40	40	40	40	40	40	40
13	38	38	38	38	38	38	38	13								13	38	38	38	38	38	38	38
14	38	38	38	38	38	38	38	14	4	4	4	4	4	4	4	14	42	42	42	42	42	42	42
15	38	38	38	38	38	38	38	15	2	2	2	2	2	2	2	15	40	40	40	40	40	40	40
16	38	38	38	38	38	38	38	16								16	38	38	38	38	38	38	38
17	38	38	38	38	38	38	38	17								17	38	38	38	38	38	38	38
18	38	38	38	38	38	38	38	18	2	2	2	2	2	2	2	18	40	40	40	40	40	40	40
19	38	38	38	38	38	38	38	19								19	38	38	38	38	38	38	38
20	38	38	38	38	38	38	38	20								20	38	38	38	38	38	38	38
21	38	38	38	38	38	38	38	21								21	38	38	38	38	38	38	38
22	38	38	38	38	38	38	38	22								22	38	38	38	38	38	38	38
23	38																						

# Air Transport Movement Allocation by Operator

Comparison between W17 End vs. W18 Start



Operator	FULL SEASON ALLOCATION								PEAK WEEK ALLOCATION							
	W17 ATMs	W18 ATMs	+/- change	W18 Rank	W17 Seats	W18 Seats	+/- change	W18 Rank	W17 ATMs	W18 ATMs	+/- change	W18 Rank	W17 Seats	W18 Seats	+/- change	W18 Rank
Adria Airways	193	122	-71	41	15,341	8,664	-6,677	39	8	6	-2	39	624	452	-172	40
Aegean Airlines	205	210	5	37	35,489	36,594	1,105	30	10	12	2	30	1,728	2,142	414	25
Aer Lingus	65	16	-49	49	11,779	2,784	-8,995	42	-	4	4	43	-	696	696	39
Aeroflot	915	920	5	6	134,037	134,380	343	8	42	42	0	6	6,384	6,132	-252	9
Air Berlin	-	-	0	54	-	-	0	47	-	-	-	0	51	-	-	44
Air Cairo	222	264	42	30	38,670	45,936	7,266	26	10	12	2	30	1,740	2,088	348	27
Air China	132	132	0	39	31,284	31,284	0	32	6	6	0	39	1,422	1,422	0	32
Air Corsica	2	-	-2	54	377	-	-377	47	-	-	-	0	51	-	0	44
Air France	895	884	-11	8	160,950	143,212	-17,738	7	42	42	0	6	7,534	6,828	-706	7
AirBaltic	528	524	-4	19	40,312	39,824	-488	28	24	24	0	18	1,824	1,824	0	28
AirExplore	2	2	0	51	396	378	-18	44	-	-	0	51	-	-	0	44
AlbaStar	1	-	-1	54	198	-	-198	47	-	-	0	51	-	-	0	44
Alitalia	306	308	2	24	55,113	55,440	327	21	14	14	0	25	2,520	2,520	0	21
Antonov Airlines	3	-	-3	54	-	-	0	47	-	-	0	51	-	-	0	44
Arkefly	147	99	-48	42	41,054	27,321	-13,733	33	6	6	0	39	1,674	1,650	-24	30
Arkia	4	-	-4	54	1,110	-	-1,110	47	-	-	0	51	-	-	0	44
ASL Airlines Belgium	214	224	10	33	-	-	0	47	10	10	0	34	-	-	0	44
ASL Airlines France	1	-	-1	54	154	-	-154	47	-	-	0	51	-	-	0	44
Astra Airlines	1	-	-1	54	117	-	-117	47	-	-	0	51	-	-	0	44
Austrian Airlines	750	762	12	12	79,011	68,384	-10,627	19	36	36	0	11	3,228	3,264	36	19
Belavia Belarusian Airlines	258	304	46	27	36,407	38,304	1,897	29	12	14	2	25	1,644	1,764	120	29
Bin Air	1	-	-1	54	-	-	0	47	-	-	0	51	-	-	0	44
Blue Panorama Airlines	-	44	44	46	-	11,924	11,924	38	-	4	4	43	-	1,084	1,084	35
British Airways	551	536	-15	18	92,576	85,676	-6,900	14	26	24	-2	18	4,368	3,802	-566	16
Brussels Airlines	606	550	-56	17	85,018	77,550	-7,468	17	32	29	-3	14	4,512	4,089	-423	15
BUSINESS WINGS	2	-	-2	54	-	-	0	47	-	-	0	51	-	-	0	44
Carpatair	2	-	-2	54	210	-	-210	47	-	-	0	51	-	-	0	44
Corendon Airlines	19	2	-17	51	3,564	378	-3,186	44	2	-	0	51	378	-	-378	44
Corendon Airlines Europe	-	80	80	44	-	15,120	15,120	36	-	4	4	43	-	756	756	36
CSA Czech Airlines	599	608	9	15	33,813	40,940	7,127	27	30	24	-6	18	2,036	1,636	-400	31
DHL Air	2	-	-2	54	-	-	0	47	-	-	0	51	-	-	0	44
EasyJet	-	762	762	12	-	132,708	132,708	9	-	36	36	11	-	6,276	6,276	8
El Al Israel Airlines	211	222	11	34	32,670	35,232	2,562	31	10	8	-2	37	1,576	1,268	-308	33
Emirates	309	308	-1	24	129,335	131,540	2,205	10	14	14	0	25	5,992	5,992	0	10
Enter Air	559	1,538	979	4	105,600	290,304	184,704	4	30	67	37	4	5,670	12,642	6,972	5
European Air Transport (DHL)	238	266	28	29	-	-	0	47	10	18	8	23	-	-	0	44
Eurowings	469	-	-469	54	69,692	-	-69,692	47	22	-	-22	51	3,632	-	-3,632	44
Federal Express	168	176	8	38	-	-	0	47	8	8	0	37	-	-	0	44
Finnair	598	608	10	15	62,972	63,702	730	20	28	28	0	15	3,006	2,800	-206	20
Flydubai	-	296	296	28	-	51,504	51,504	23	-	14	14	25	-	2,436	2,436	22
GA	21	-	-21	54	18	-	-18	47	-	-	0	51	-	-	0	44
Genex	208	220	12	35	-	-	0	47	9	10	1	34	-	-	0	44
Go2Sky	2	-	-2	54	352	-	-352	47	-	-	0	51	-	-	0	44
Israir	43	2	-41	51	7,741	360	-7,381	46	8	-	-8	51	1,467	-	-1,467	44
KLM Royal Dutch Airlines	842	906	64	7	100,425	101,730	1,305	13	40	42	2	6	4,504	4,704	200	13
LOT Polish Airlines	40,492	47,439	6,947	1	4,189,518	5,156,922	967,404	1	1,888	2,158	270	1	198,018	234,378	36,360	1
Lufthansa	2,033	2,054	21	3	284,936	309,122	24,186	3	96	98	2	3	13,821	14,770	949	3
Norwegian	321	452	131	20	59,626	84,558	24,932	15	16	22	6	21	2,976	4,128	1,152	14
Nouvelair Tunisie	1	88	87	43	185	15,576	15,391	35	-	4	4	43	-	708	708	38
Onur Air	-	62	62	45	-	12,243	12,243	37	-	2	2	48	-	438	438	41
Qatar Airways	521	876	355	9	121,177	251,472	130,295	6	28	42	14	6	6,028	12,096	6,068	6
RAF-Avia	2	-	-2	54	69	-	-69	47	-	-	0	51	-	-	0	44
Ryanair	259	258	-1	32	48,906	48,762	-144	24	12	12	0	30	2,268	2,268	0	24
SAS Scandinavian	625	770	145	11	56,475	70,844	14,369	18	34	30	-4	13	3,196	3,370	174	18
Sky Taxi	4	-	-4	54	69	-	-69	47	-	-	0	51	-	-	0	44
Small Planet Airlines Poland	361	451	90	21	68,410	81,180	12,770	16	18	20	2	22	3,440	3,600	160	17
SprintAir	283	318	35	23	138	-	-138	47	10	27	17	17	-	-	0	44
SprintAir Cargo	212	218	6	36	-	-	0	47	10	10	0	34	-	-	0	44
Star Air	4	-	-4	54	-	-	0	47	-	-	0	51	-	-	0	44
SunExpress	-	20	20	48	-	3,780	3,780	41	-	2	2	48	-	378	378	43
Swiss International	871	833	-38	10	104,514	116,051	11,537	11	40	38	-2	10	4,384	5,496	1,112	11
TAP Air Portugal	294	306	12	26	46,307	47,904	1,597	25	12	14	2	25	1,968	2,136	168	26
Trade Air	1	-	-1	54	114	-	-114	47	-	-	0	51	-	-	0	44
Travel Service	83	127	44	40	15,642	24,003	8,361	34	6	6	2	39	756	1,134	378	34
Travel Service Polska	607	1,157	550	5	131,429	281,853	150,424	5	29	53	24	5	6,261	12,825	6,564	4
Turkish Airlines	222	264	42	30	39,889	52,316	12,427	22	10	12	2	30	1,800	2,378	578	23
Ukraine International	614	616	2	14	99,677	107,972	8,295	12	28	28	0	15	4,636	4,908	272	12
UPS Airlines	382	394	12	22	-	-	0	47	18	18	0	23	-	-	0	44
Ural Airlines	61	-	-61	54	9,667	-	-9,667	47	6	-	-6	51	960	-	-960	44
Vueling	115	44	-71	46	20,743	7,920	-12,823	40	6	4	-2	43	1,080	720	-360	37
Wizz Air	5,787	5,251	-536	2	1,165,028	1,112,730	-52,298	2	260	268	8	2	52,550	56,400	4,090	2
WOW Air	7	3	-4	50	1,439	600	-839	43	-	2	2	48	-	400	400	42
<b>TOTAL</b>	<b>64,456</b>	<b>73,896</b>	<b>9,440</b>		<b>7,869,745</b>	<b>9,456,981</b>	<b>1,587,236</b>		<b>3,014</b>	<b>3,428</b>	<b>414</b>		<b>371,605</b>	<b>441,038</b>	<b>69,433</b>	

Operators with 0 'ATMs' in both W17 End & W18 Start schedules are included in the table due to appearing in the W17 Start schedule (either with/without allocated slots).

# Peak Week - Allocation and Slot Adjustment Distribution by Operator



Schedule: W18 Start

Operator	W18 allocated ATMs	SLOT ADJUSTMENTS (MINUTES OFF REQUESTED TIME)														Requests with NO slot allocated	
		0	5	10	15	20	25	30	35	40	45	50	55	60	>60		
Adria Airways	6	100.0%	0.0%	0.0%	0.0%	0.0%	0.0%	0.0%	0.0%	0.0%	0.0%	0.0%	0.0%	0.0%	0.0%	0.0%	-
Aegean Airlines	12	100.0%	0.0%	0.0%	0.0%	0.0%	0.0%	0.0%	0.0%	0.0%	0.0%	0.0%	0.0%	0.0%	0.0%	0.0%	-
Aer Lingus	4	100.0%	0.0%	0.0%	0.0%	0.0%	0.0%	0.0%	0.0%	0.0%	0.0%	0.0%	0.0%	0.0%	0.0%	0.0%	-
Aeroflot	42	100.0%	0.0%	0.0%	0.0%	0.0%	0.0%	0.0%	0.0%	0.0%	0.0%	0.0%	0.0%	0.0%	0.0%	0.0%	-
Air Berlin	-																-
Air Cairo	12	100.0%	0.0%	0.0%	0.0%	0.0%	0.0%	0.0%	0.0%	0.0%	0.0%	0.0%	0.0%	0.0%	0.0%	0.0%	-
Air China	6	100.0%	0.0%	0.0%	0.0%	0.0%	0.0%	0.0%	0.0%	0.0%	0.0%	0.0%	0.0%	0.0%	0.0%	0.0%	-
Air France	42	100.0%	0.0%	0.0%	0.0%	0.0%	0.0%	0.0%	0.0%	0.0%	0.0%	0.0%	0.0%	0.0%	0.0%	0.0%	-
AirBaltic	24	100.0%	0.0%	0.0%	0.0%	0.0%	0.0%	0.0%	0.0%	0.0%	0.0%	0.0%	0.0%	0.0%	0.0%	0.0%	-
Alitalia	14	100.0%	0.0%	0.0%	0.0%	0.0%	0.0%	0.0%	0.0%	0.0%	0.0%	0.0%	0.0%	0.0%	0.0%	0.0%	-
Arkfly	6	100.0%	0.0%	0.0%	0.0%	0.0%	0.0%	0.0%	0.0%	0.0%	0.0%	0.0%	0.0%	0.0%	0.0%	0.0%	-
ASL Airlines Belgium	10	100.0%	0.0%	0.0%	0.0%	0.0%	0.0%	0.0%	0.0%	0.0%	0.0%	0.0%	0.0%	0.0%	0.0%	0.0%	-
Austrian Airlines	36	100.0%	0.0%	0.0%	0.0%	0.0%	0.0%	0.0%	0.0%	0.0%	0.0%	0.0%	0.0%	0.0%	0.0%	0.0%	-
Belavia Belarusian Airlines	14	100.0%	0.0%	0.0%	0.0%	0.0%	0.0%	0.0%	0.0%	0.0%	0.0%	0.0%	0.0%	0.0%	0.0%	0.0%	-
Blue Panorama Airlines	4	0.0%	0.0%	0.0%	0.0%	0.0%	0.0%	0.0%	0.0%	0.0%	50.0%	0.0%	0.0%	0.0%	50.0%	0.0%	-
British Airways	24	100.0%	0.0%	0.0%	0.0%	0.0%	0.0%	0.0%	0.0%	0.0%	0.0%	0.0%	0.0%	0.0%	0.0%	0.0%	-
Brussels Airlines	29	100.0%	0.0%	0.0%	0.0%	0.0%	0.0%	0.0%	0.0%	0.0%	0.0%	0.0%	0.0%	0.0%	0.0%	0.0%	-
Corendon Airlines	-																-
Corendon Airlines Europe	4	75.0%	25.0%	0.0%	0.0%	0.0%	0.0%	0.0%	0.0%	0.0%	0.0%	0.0%	0.0%	0.0%	0.0%	0.0%	-
CSA Czech Airlines	24	91.7%	0.0%	0.0%	0.0%	0.0%	0.0%	0.0%	4.2%	0.0%	0.0%	0.0%	0.0%	0.0%	4.2%	0.0%	-
EasyJet	36	100.0%	0.0%	0.0%	0.0%	0.0%	0.0%	0.0%	0.0%	0.0%	0.0%	0.0%	0.0%	0.0%	0.0%	0.0%	-
El Al Israel Airlines	8	100.0%	0.0%	0.0%	0.0%	0.0%	0.0%	0.0%	0.0%	0.0%	0.0%	0.0%	0.0%	0.0%	0.0%	0.0%	-
Emirates	14	100.0%	0.0%	0.0%	0.0%	0.0%	0.0%	0.0%	0.0%	0.0%	0.0%	0.0%	0.0%	0.0%	0.0%	0.0%	-
Enter Air	67	77.6%	6.0%	3.0%	3.0%	1.5%	0.0%	0.0%	1.5%	1.5%	1.5%	0.0%	0.0%	0.0%	4.5%	0.0%	-
European Air Transport (DHL)	18	100.0%	0.0%	0.0%	0.0%	0.0%	0.0%	0.0%	0.0%	0.0%	0.0%	0.0%	0.0%	0.0%	0.0%	0.0%	-
Eurowings	-																-
Federal Express	8	100.0%	0.0%	0.0%	0.0%	0.0%	0.0%	0.0%	0.0%	0.0%	0.0%	0.0%	0.0%	0.0%	0.0%	0.0%	-
Finnair	28	100.0%	0.0%	0.0%	0.0%	0.0%	0.0%	0.0%	0.0%	0.0%	0.0%	0.0%	0.0%	0.0%	0.0%	0.0%	-
Flydubai	14	100.0%	0.0%	0.0%	0.0%	0.0%	0.0%	0.0%	0.0%	0.0%	0.0%	0.0%	0.0%	0.0%	0.0%	0.0%	-
Genex	10	100.0%	0.0%	0.0%	0.0%	0.0%	0.0%	0.0%	0.0%	0.0%	0.0%	0.0%	0.0%	0.0%	0.0%	0.0%	-
Israir	-																-
KLM Royal Dutch Airlines	42	83.3%	0.0%	0.0%	0.0%	0.0%	16.7%	0.0%	0.0%	0.0%	0.0%	0.0%	0.0%	0.0%	0.0%	0.0%	-
LOT Polish Airlines	2,158	96.5%	1.8%	1.0%	0.5%	0.0%	0.0%	0.0%	0.0%	0.0%	0.0%	0.0%	0.0%	0.0%	0.0%	0.0%	-
Lufthansa	98	92.9%	3.1%	4.1%	0.0%	0.0%	0.0%	0.0%	0.0%	0.0%	0.0%	0.0%	0.0%	0.0%	0.0%	0.0%	-
Norwegian	22	100.0%	0.0%	0.0%	0.0%	0.0%	0.0%	0.0%	0.0%	0.0%	0.0%	0.0%	0.0%	0.0%	0.0%	0.0%	-
Nouvelair Tunisie	4	100.0%	0.0%	0.0%	0.0%	0.0%	0.0%	0.0%	0.0%	0.0%	0.0%	0.0%	0.0%	0.0%	0.0%	0.0%	-
Onur Air	2	0.0%	0.0%	0.0%	0.0%	0.0%	0.0%	0.0%	0.0%	0.0%	0.0%	0.0%	0.0%	0.0%	100.0%	0.0%	-
Qatar Airways	42	85.7%	0.0%	0.0%	0.0%	0.0%	0.0%	0.0%	0.0%	0.0%	0.0%	0.0%	0.0%	0.0%	2.4%	11.9%	-
Ryanair	12	91.7%	8.3%	0.0%	0.0%	0.0%	0.0%	0.0%	0.0%	0.0%	0.0%	0.0%	0.0%	0.0%	0.0%	0.0%	-
SAS Scandinavian	30	100.0%	0.0%	0.0%	0.0%	0.0%	0.0%	0.0%	0.0%	0.0%	0.0%	0.0%	0.0%	0.0%	0.0%	0.0%	-
Small Planet Airlines Poland	20	95.0%	0.0%	0.0%	0.0%	5.0%	0.0%	0.0%	0.0%	0.0%	0.0%	0.0%	0.0%	0.0%	0.0%	0.0%	-
SprintAir	27	100.0%	0.0%	0.0%	0.0%	0.0%	0.0%	0.0%	0.0%	0.0%	0.0%	0.0%	0.0%	0.0%	0.0%	0.0%	-
SprintAir Cargo	10	100.0%	0.0%	0.0%	0.0%	0.0%	0.0%	0.0%	0.0%	0.0%	0.0%	0.0%	0.0%	0.0%	0.0%	0.0%	-
SunExpress	2	100.0%	0.0%	0.0%	0.0%	0.0%	0.0%	0.0%	0.0%	0.0%	0.0%	0.0%	0.0%	0.0%	0.0%	0.0%	-
Swiss International	38	97.4%	2.6%	0.0%	0.0%	0.0%	0.0%	0.0%	0.0%	0.0%	0.0%	0.0%	0.0%	0.0%	0.0%	0.0%	-
TAP Air Portugal	14	100.0%	0.0%	0.0%	0.0%	0.0%	0.0%	0.0%	0.0%	0.0%	0.0%	0.0%	0.0%	0.0%	0.0%	0.0%	-
Travel Service	6	66.7%	16.7%	16.7%	0.0%	0.0%	0.0%	0.0%	0.0%	0.0%	0.0%	0.0%	0.0%	0.0%	0.0%	0.0%	-
Travel Service Polska	53	67.9%	1.9%	1.9%	0.0%	1.9%	1.9%	0.0%	0.0%	0.0%	0.0%	15.1%	0.0%	1.9%	7.5%	0.0%	-
Turkish Airlines	12	100.0%	0.0%	0.0%	0.0%	0.0%	0.0%	0.0%	0.0%	0.0%	0.0%	0.0%	0.0%	0.0%	0.0%	0.0%	-
Ukraine International	28	100.0%	0.0%	0.0%	0.0%	0.0%	0.0%	0.0%	0.0%	0.0%	0.0%	0.0%	0.0%	0.0%	0.0%	0.0%	-
UPS Airlines	18	100.0%	0.0%	0.0%	0.0%	0.0%	0.0%	0.0%	0.0%	0.0%	0.0%	0.0%	0.0%	0.0%	0.0%	0.0%	-
Ural Airlines	-																-
Vueling	4	100.0%	0.0%	0.0%	0.0%	0.0%	0.0%	0.0%	0.0%	0.0%	0.0%	0.0%	0.0%	0.0%	0.0%	0.0%	-
Wizz Air	268	89.6%	3.0%	2.2%	1.5%	1.1%	0.4%	0.0%	0.4%	0.0%	1.5%	0.0%	0.0%	0.0%	0.4%	0.0%	-
WOW Air	2	100.0%	0.0%	0.0%	0.0%	0.0%	0.0%	0.0%	0.0%	0.0%	0.0%	0.0%	0.0%	0.0%	0.0%	0.0%	-
<b>TOTAL</b>	<b>3,428</b>	<b>95.1%</b>	<b>1.7%</b>	<b>1.0%</b>	<b>0.5%</b>	<b>0.2%</b>	<b>0.3%</b>	<b>0.1%</b>	<b>0.1%</b>	<b>0.1%</b>	<b>0.2%</b>	<b>0.3%</b>	<b>0.0%</b>	<b>0.1%</b>	<b>0.5%</b>	<b>-</b>	<b>-</b>

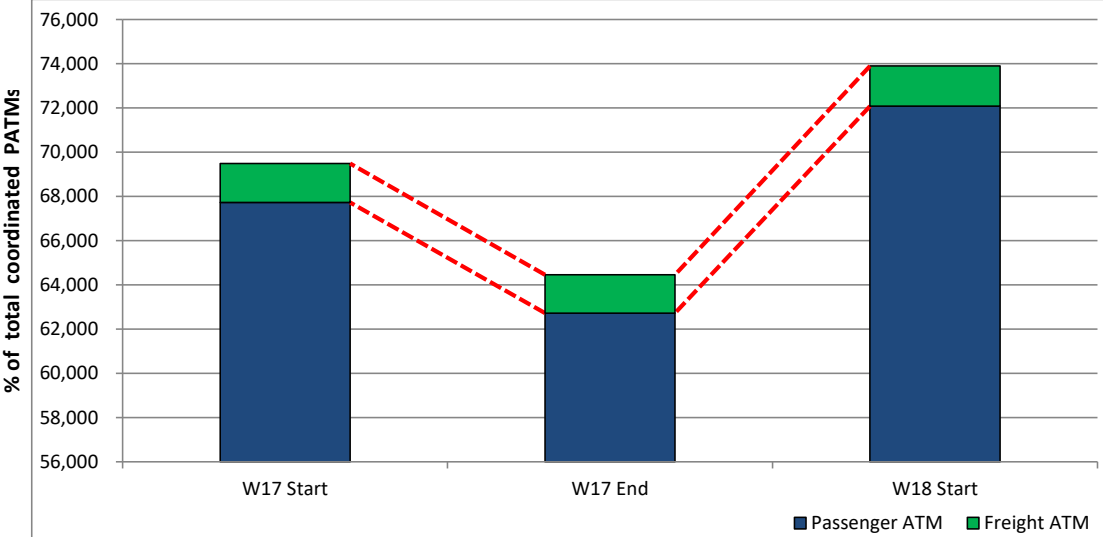
Operators with 0 'allocated ATMs' and 0 'Requests with NO slot allocated' in W18, are included in this list due to having slots allocated in either W17 Start or W17 End schedules.

## Significant Route Changes



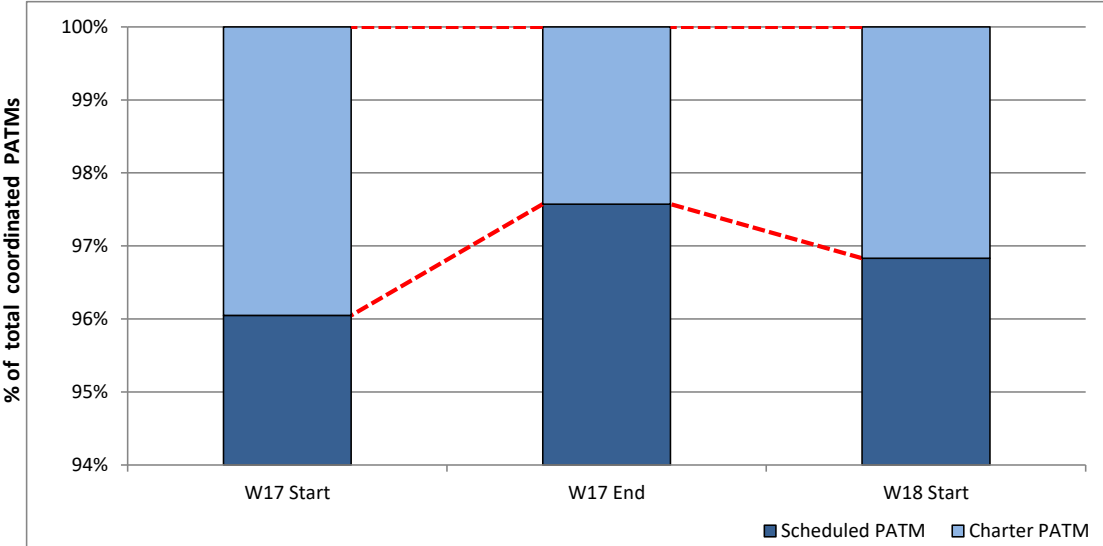
Operator	Category	Description of change from W17 schedule to W18 schedule
Travel Service Polska	New	Service to AGP, ASR, BJL, CCC, BJL, KTW, SLL and SSH
Travel Service Polska	New	Service to TCP and TLV
Travel Service Polska	Change	Increased service to CMB, FNC, HRG, RMF, SID and TFS
Travel Service Polska	Change	Decreased service to ACE
Onur Air	New	Service to AYT
Nouvelair	New	Service to DJE and TUN
Blue Panorama	New	Service to MXP and NOS
Corendon	New	Service to HRG
Norwegian International	Change	Increased service to AGP
Aer Lingus	Change	Decreased service to DUB
Enter Air	New	Service to BJL, DJE, FUE, SSH and ZNZ
Enter Air	Change	Increased service to ACE, AGA, CMB, FNC, HRG and LPA
Enter Air	Change	Increased service to MCT, RMF, SID and TFS
Eurowings	Cancelled	Service to DUS
EasyJet Switzerland	New	Service to BSL and G VA
EasyJet UK	New	Service to LGW and TXL
Flydubai	New	Service to DXB
Adria Airways	Cancelled	Service to LJU
LOT	New	Service to BLL, DBV, DME, HAJ, HKT, KUN, LUZ, MBA and MRU
LOT	New	Service to NUE, OSL, OZH, POP, SIN, SKP and TGD
LOT	Change	Increased service to BUD, MSQ and SZZ
TUI Netherlands	Cancelled	Service to MBA, MRU and POZ
Small Planet Airlines	New	Service to AGA, ASR, SSH and TCP
Small Planet Airlines	Cancelled	Service to BJL, RMF, SLL and TFS
Small Planet Airlines	Change	Increased service to HRG
Qatar Airways	Change	Increased service to DOH
Travel Service Airlines	Cancelled	Service to PRG
Turkish Airlines	Change	Increased service to IST
Vueling Airlines	Change	Decreased service to BCN
Wizzair	New	Service to RAK
Wizzair	Cancelled	Service to ABZ, BLL, BRI, LIS, NCE, OPO, SDR, VNO

## Total ATMs: Passenger ATMs vs. Freight ATMs



Schedule Snapshot

## Passenger ATMs: Scheduled vs. Charter

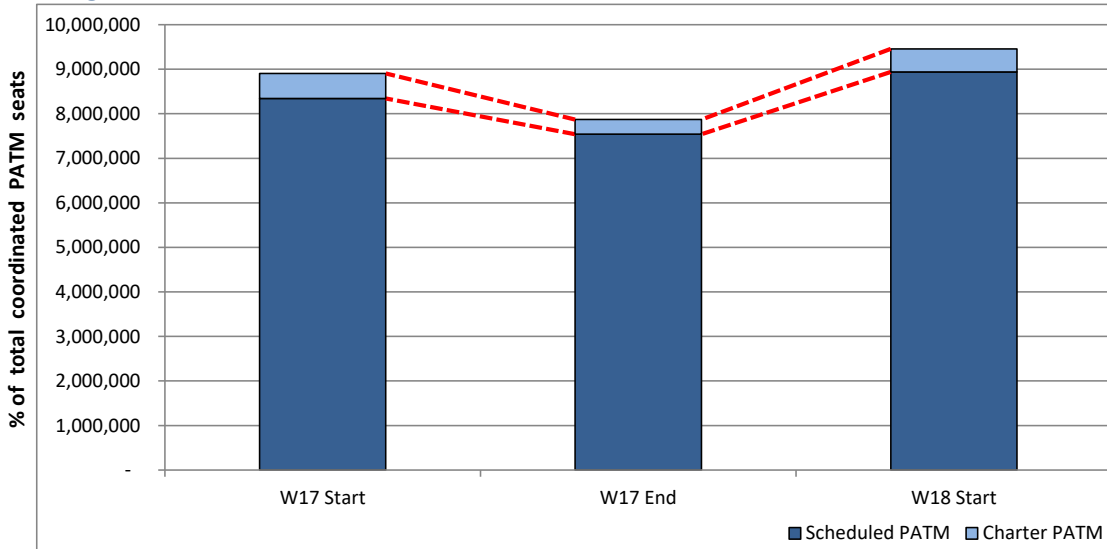


Schedule Snapshot

# Full Season - PATM Seats Analysis

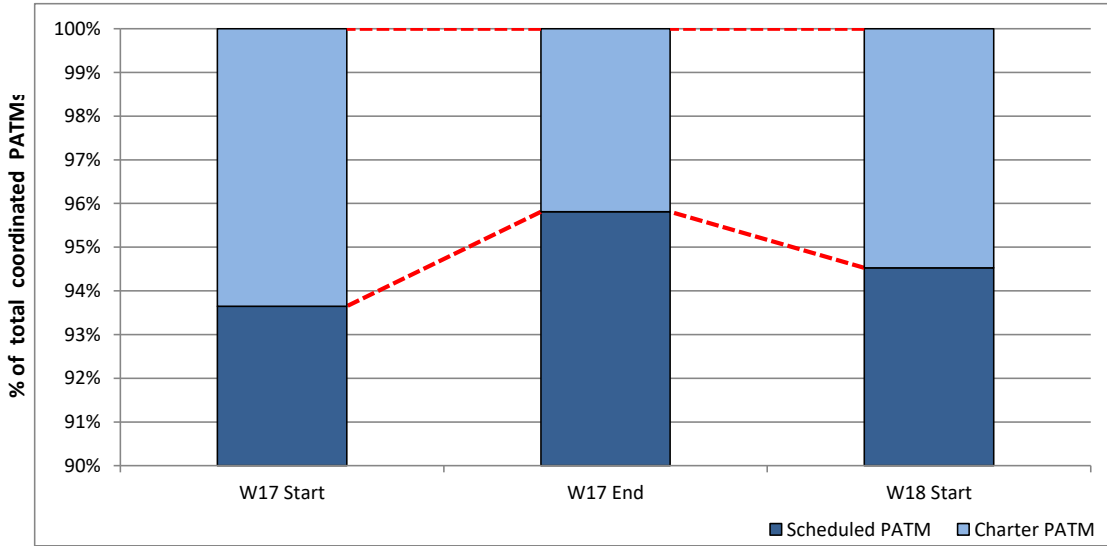


**Total Passenger ATM seats: Scheduled vs. Charter**



**Schedule Snapshot**

**Passenger ATM seats: Scheduled vs. Charter**

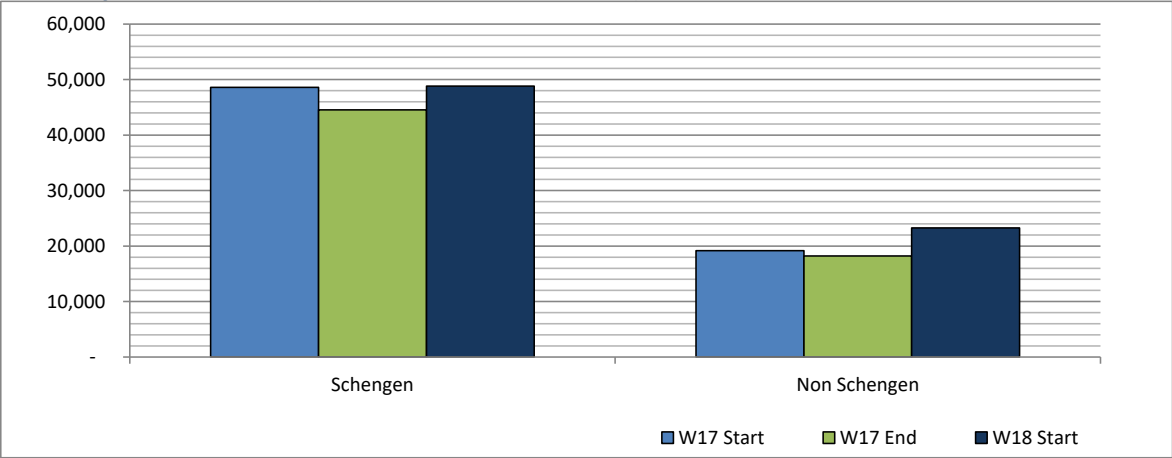


**Schedule Snapshot**

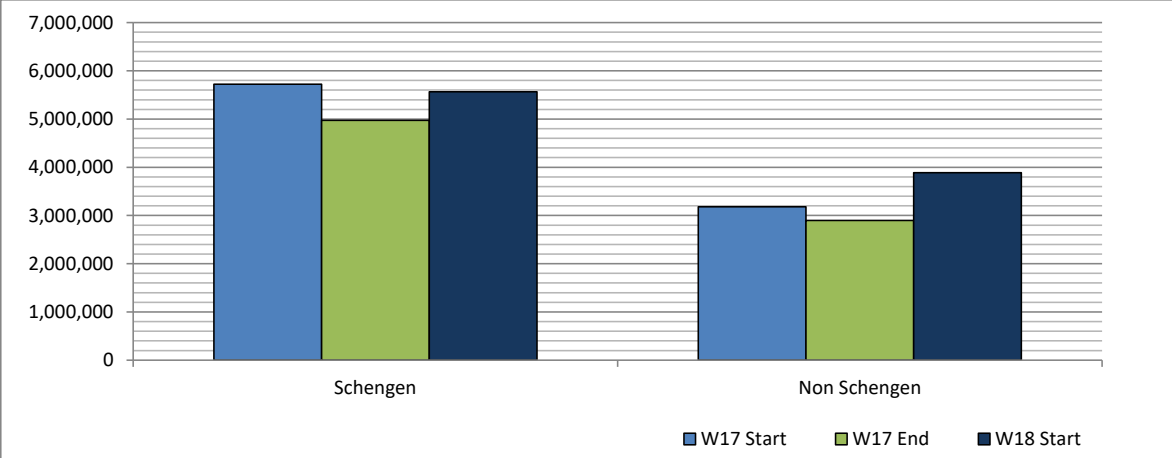
# Full Season - Terminal Analysis



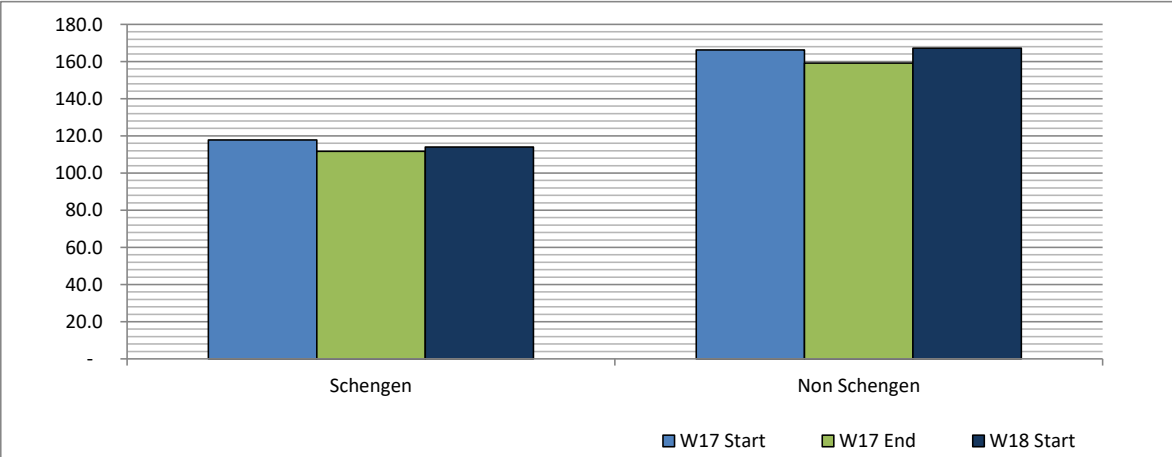
**Air Transport Movements (total allocated for season)**



**Air Transport Movement Seats (total allocated for season)**



**Seats per Air Transport Movement (average for season)**

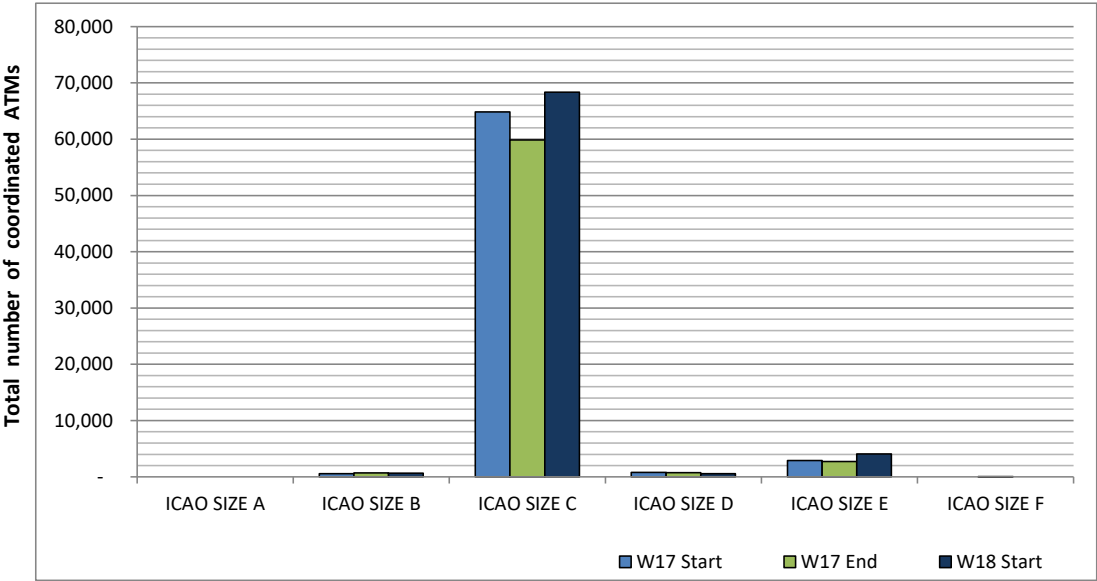




# Full Season - Aircraft Size Analysis

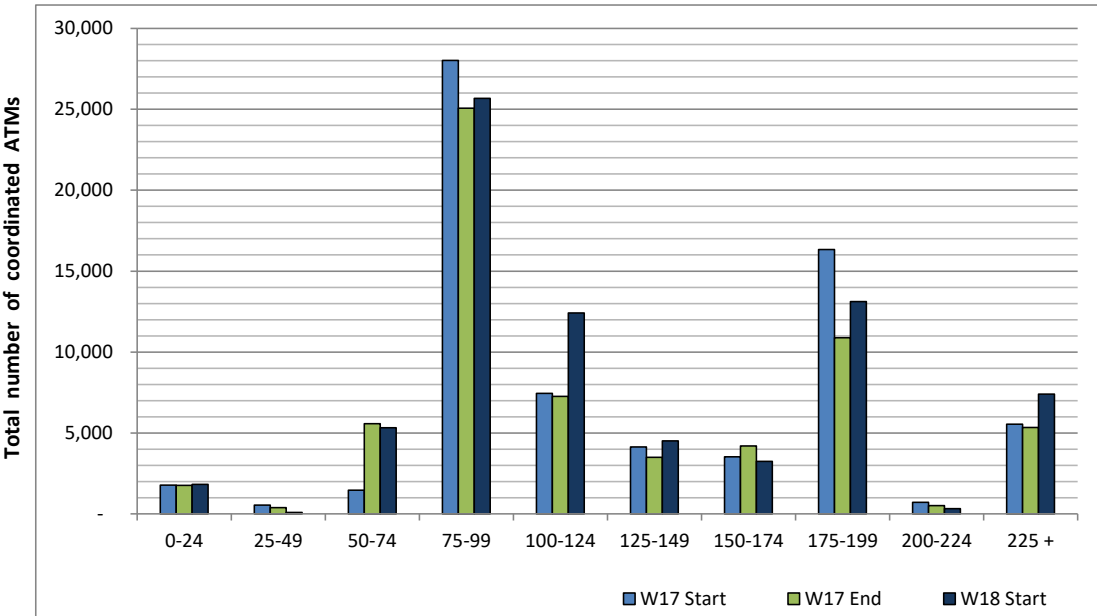


## ICAO size designation



Note: See Glossary for definitions of ICAO SIZE groupings

## Air Transport Movement seat distribution

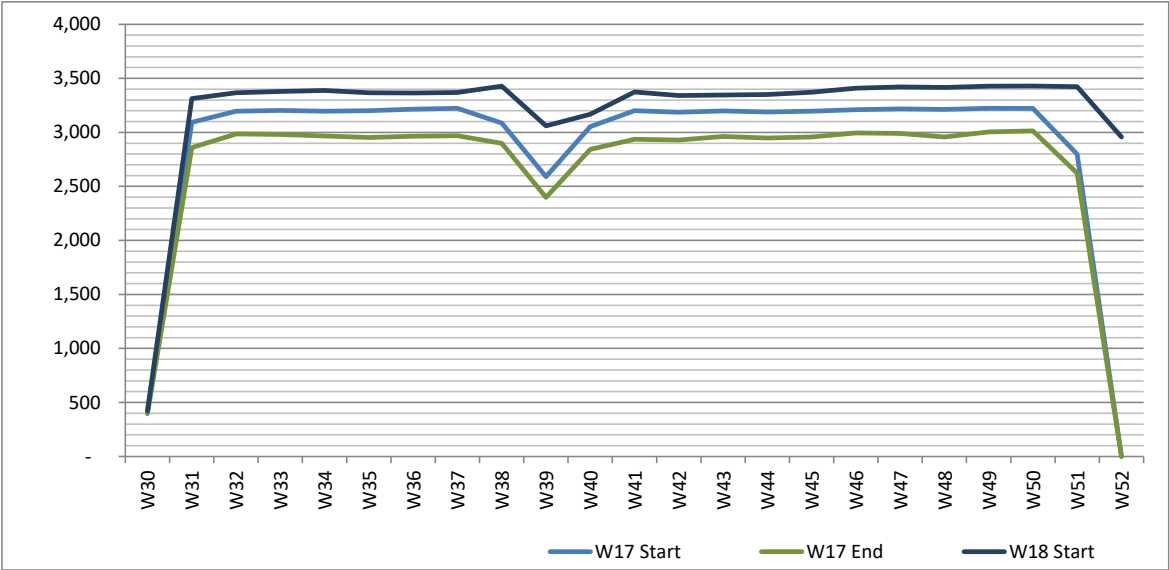


Note: FREIGHT-ONLY services with 0 seats are included in the first seat band '0-24'

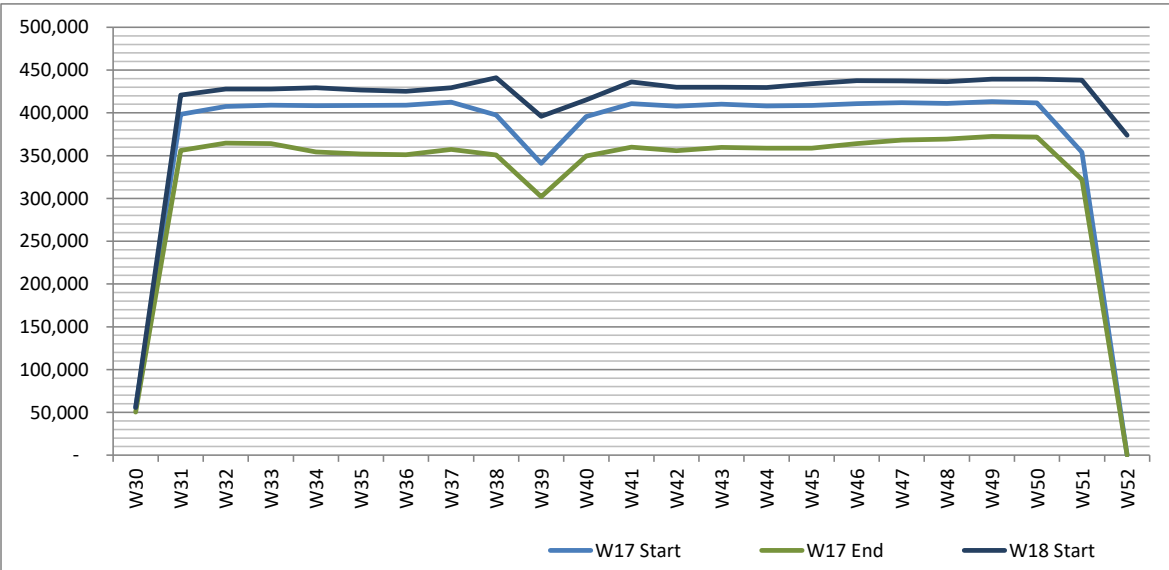
# Full Season - Seasonality



Air Transport Movements by week of season



Air Transport Movement Seats by week of season



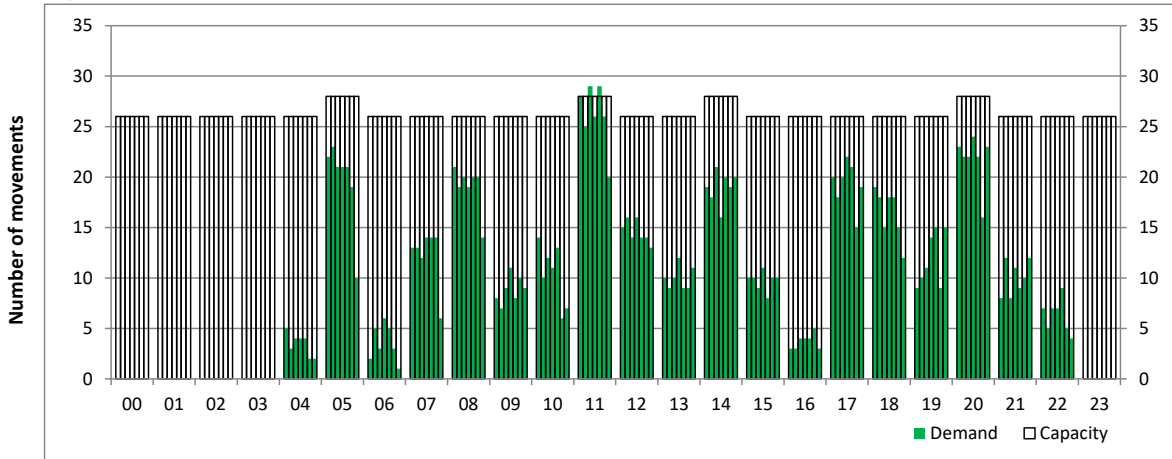
# Peak Week - Hourly Runway Demand

Schedule: W18 Start



## Hourly Arrival Demand

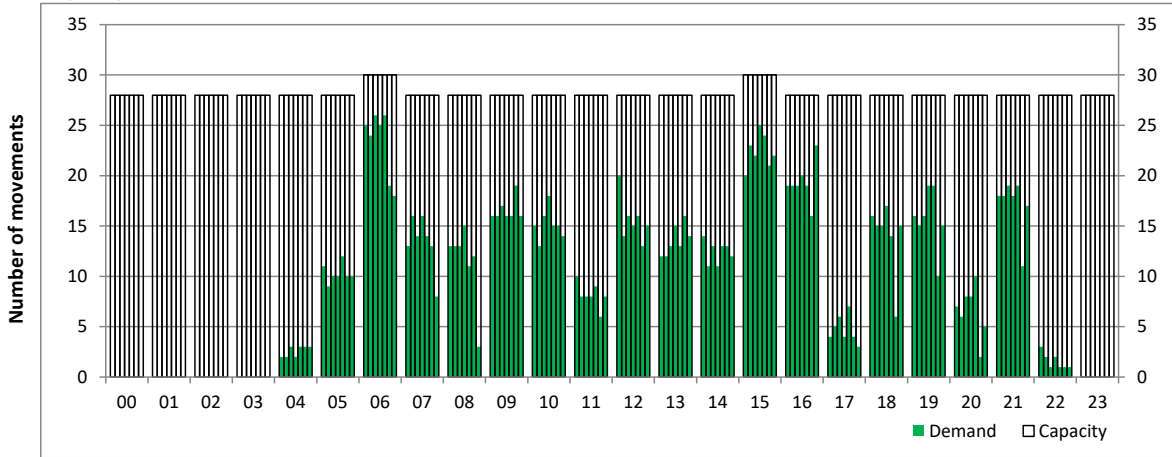
Time: UTC



Hour of day (24 hour format)

## Hourly Departure Demand

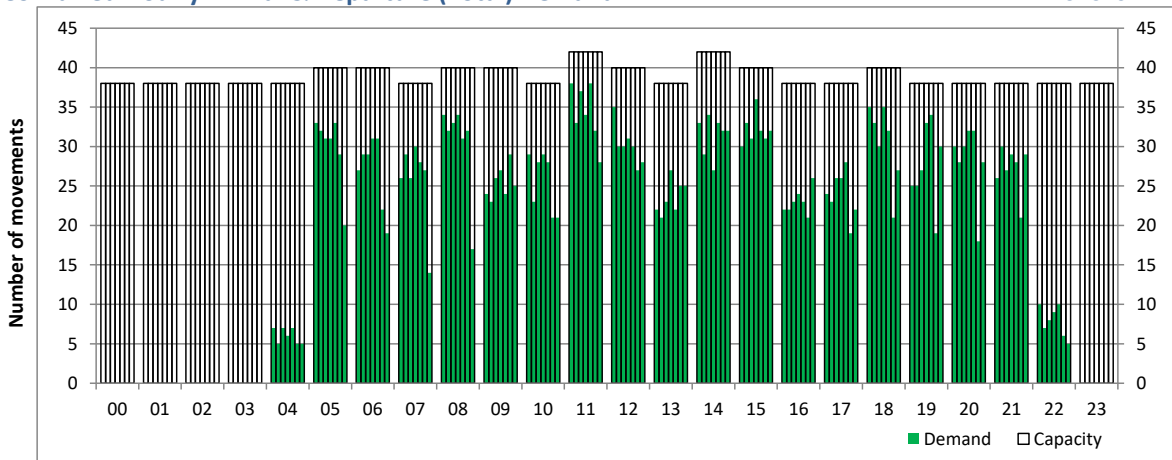
Time: UTC



Hour of day (24 hour format)

## Combined Hourly Arrival & Departure (Total) Demand

Time: UTC



Hour of day (24 hour format)

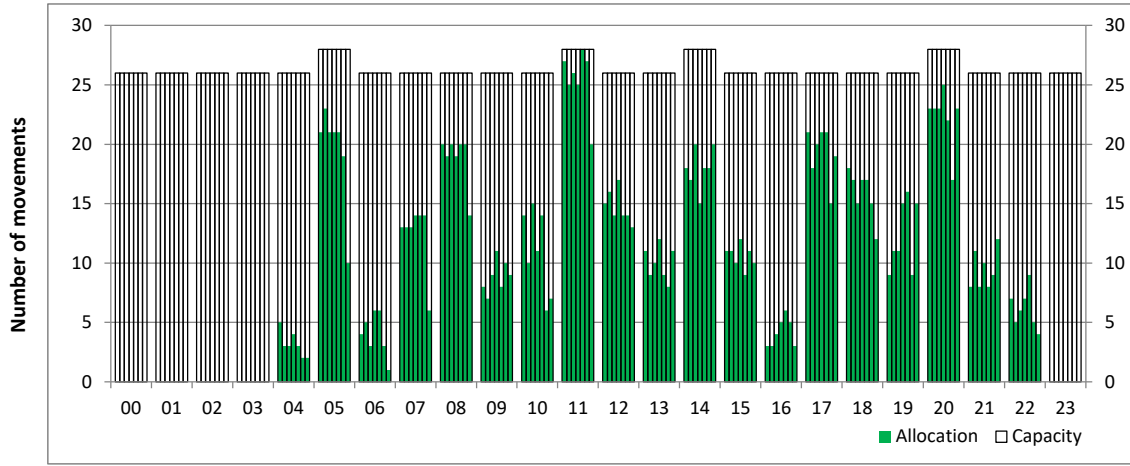
# Peak Week - Hourly Runway Allocation

Schedule: W18 Start



## Hourly Arrival Allocation

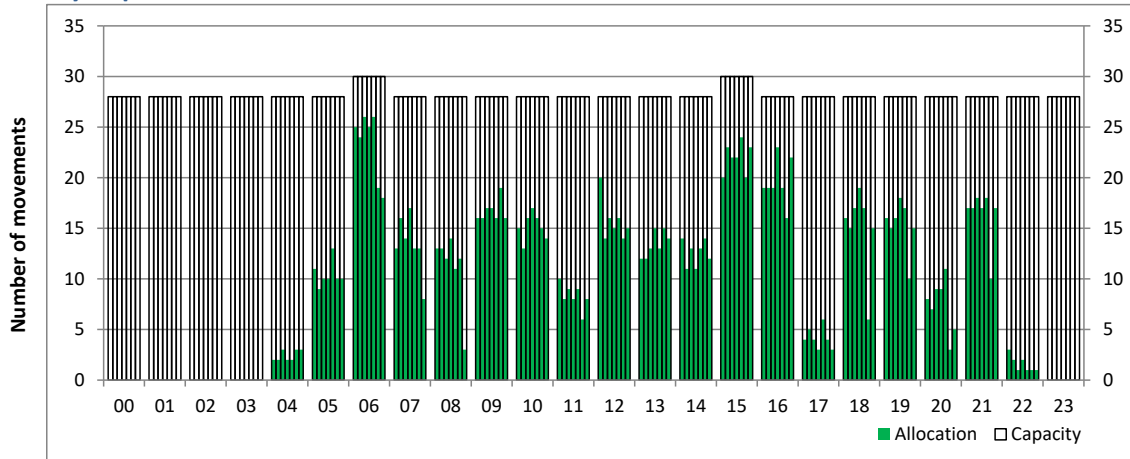
Time: UTC



Hour of day (24 hour format)

## Hourly Departure Allocation

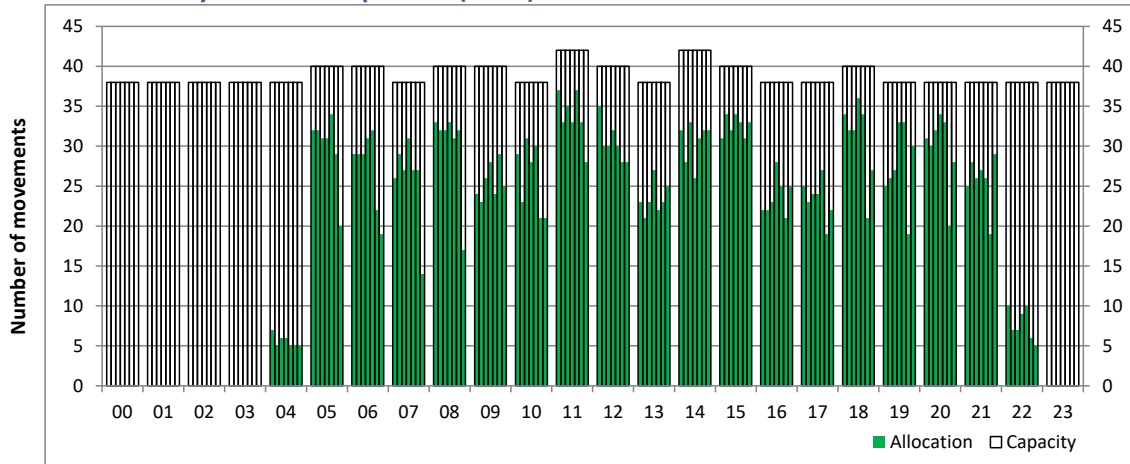
Time: UTC



Hour of day (24 hour format)

## Combined Hourly Arrival & Departure (Total) Allocation

Time: UTC



Hour of day (24 hour format)

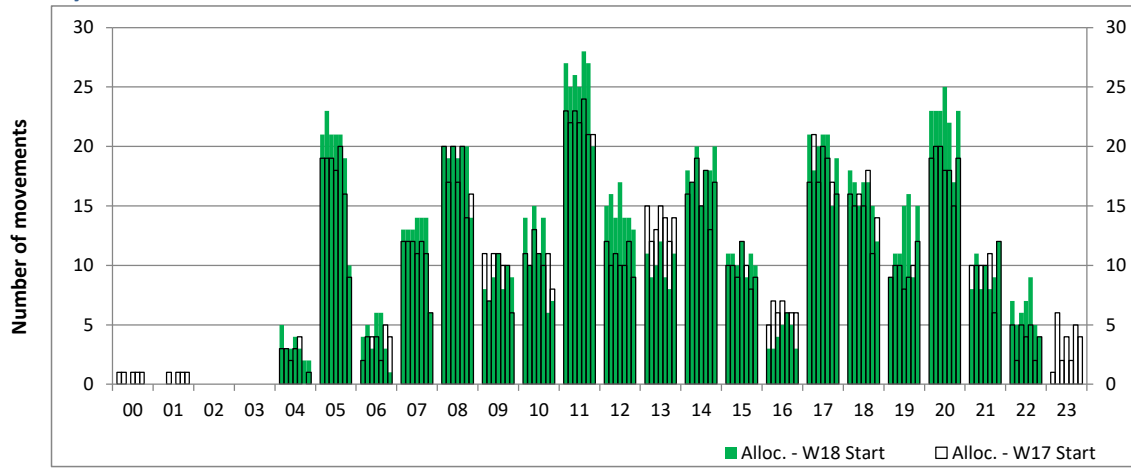
# Peak Week - Runway Allocation Comparison



Comparison of W18 Start vs. W17 Start

## Hourly Arrival Allocation

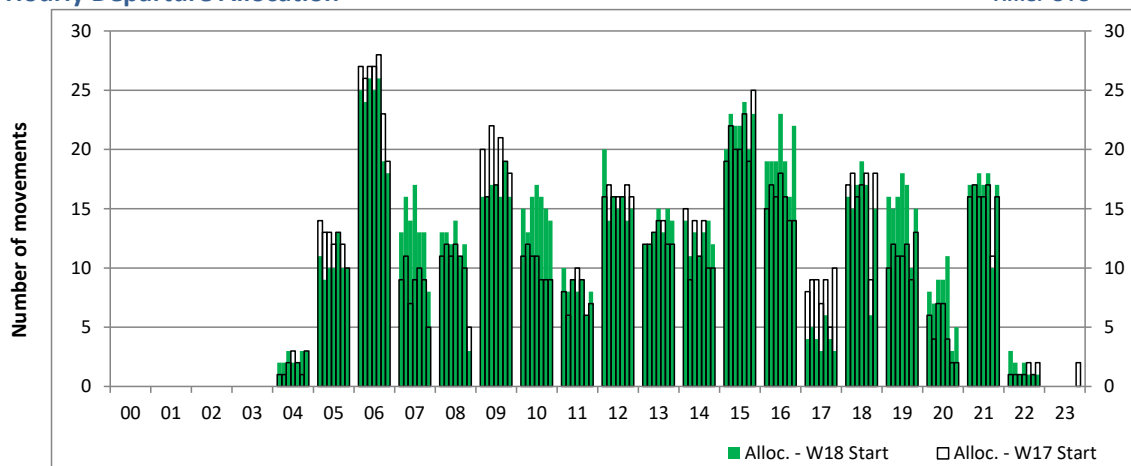
Time: UTC



Hour of day (24 hour format)

## Hourly Departure Allocation

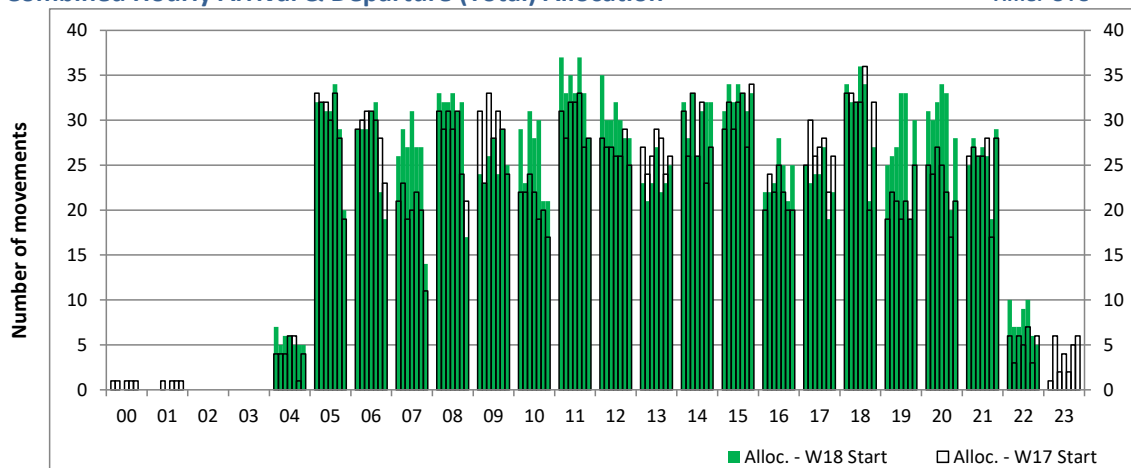
Time: UTC



Hour of day (24 hour format)

## Combined Hourly Arrival & Departure (Total) Allocation

Time: UTC



Hour of day (24 hour format)

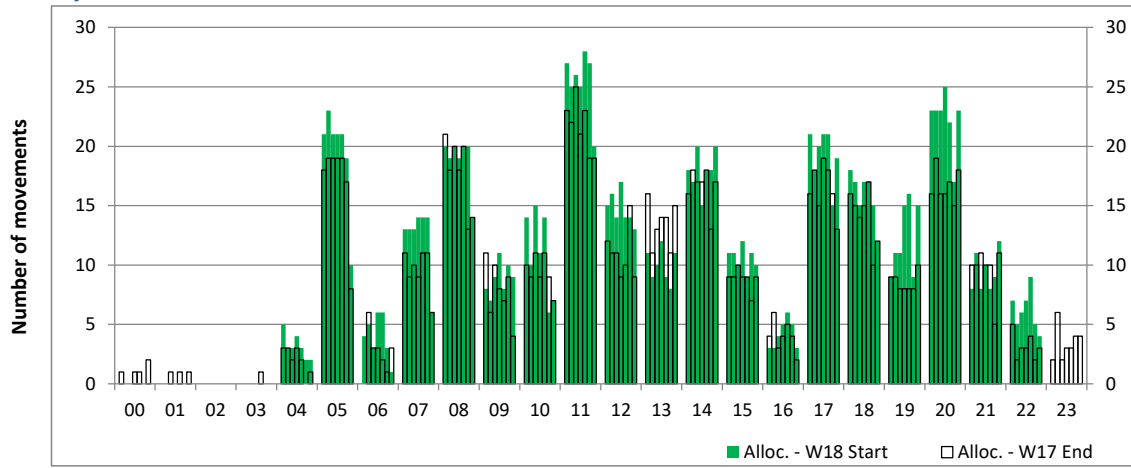
# Peak Week - Runway Allocation Comparison



Comparison of W18 Start vs. W17 End

## Hourly Arrival Allocation

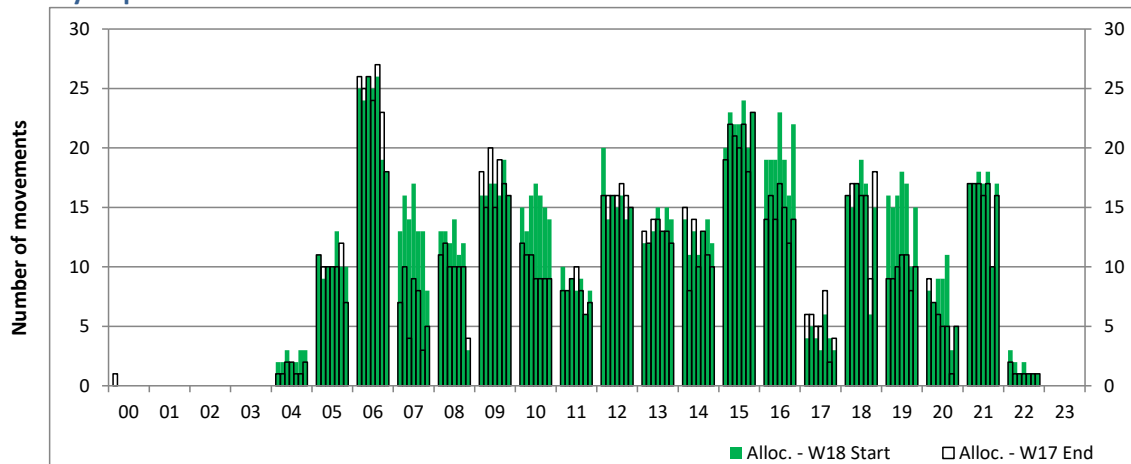
Time: UTC



Hour of day (24 hour format)

## Hourly Departure Allocation

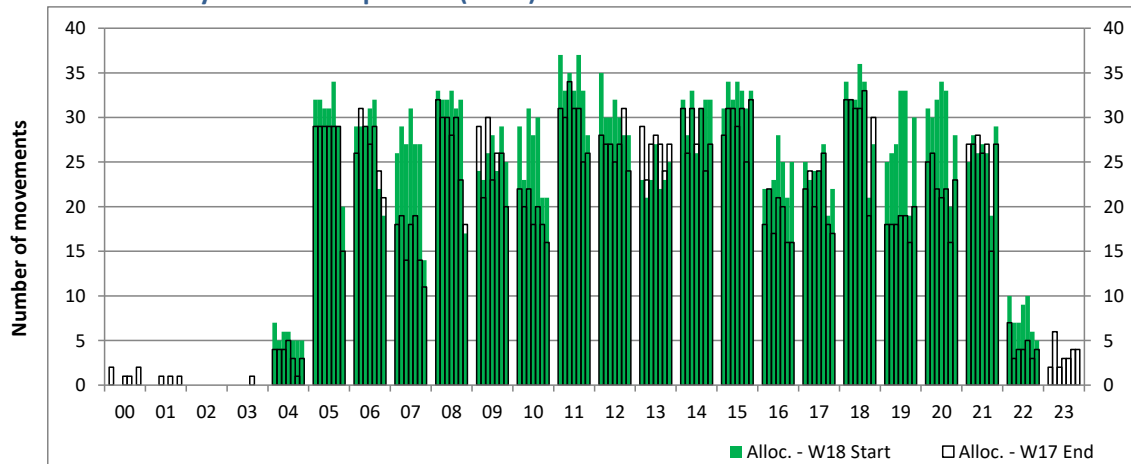
Time: UTC



Hour of day (24 hour format)

## Combined Hourly Arrival & Departure (Total) Allocation

Time: UTC



Hour of day (24 hour format)

# Peak Week - Passengers Histogram

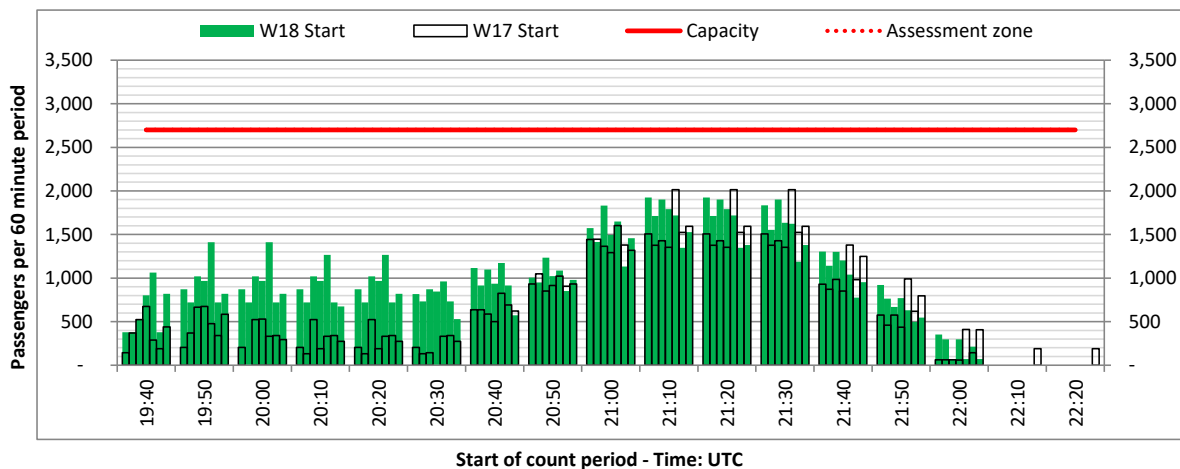
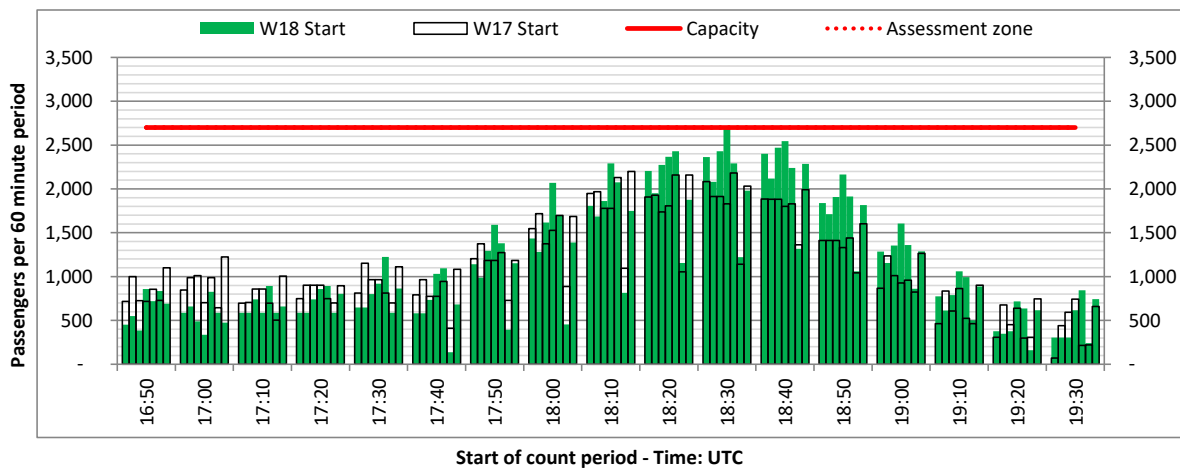
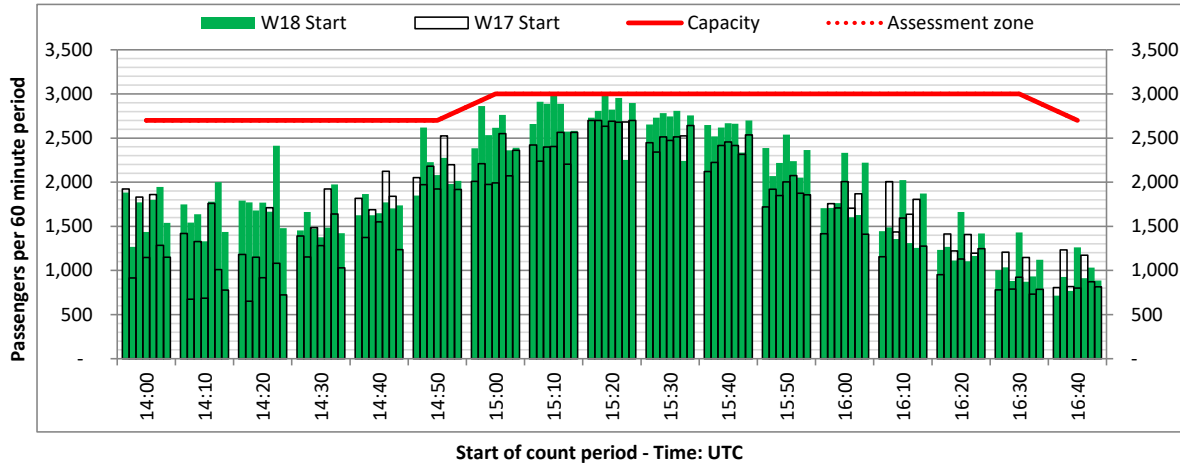


DEPARTURE - 60 minute count rolling every 10 mins (T60/10)

Terminals: All Terminals

Operators: All Operators

Days: 1234567



# Peak Week - Movements Histogram

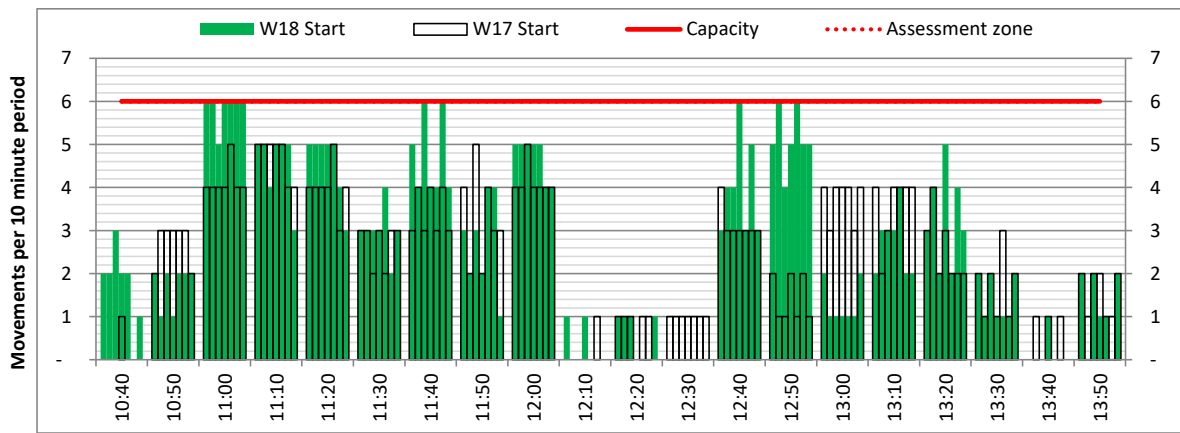
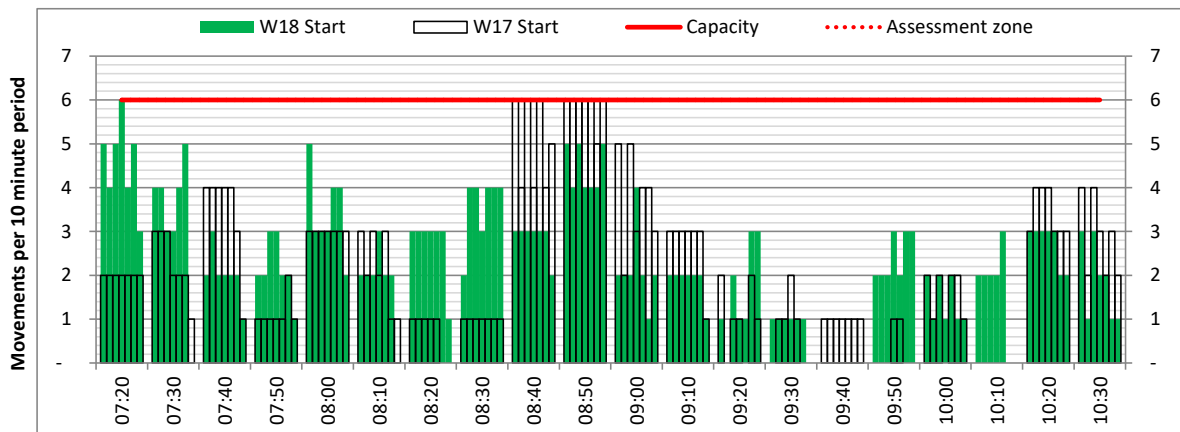
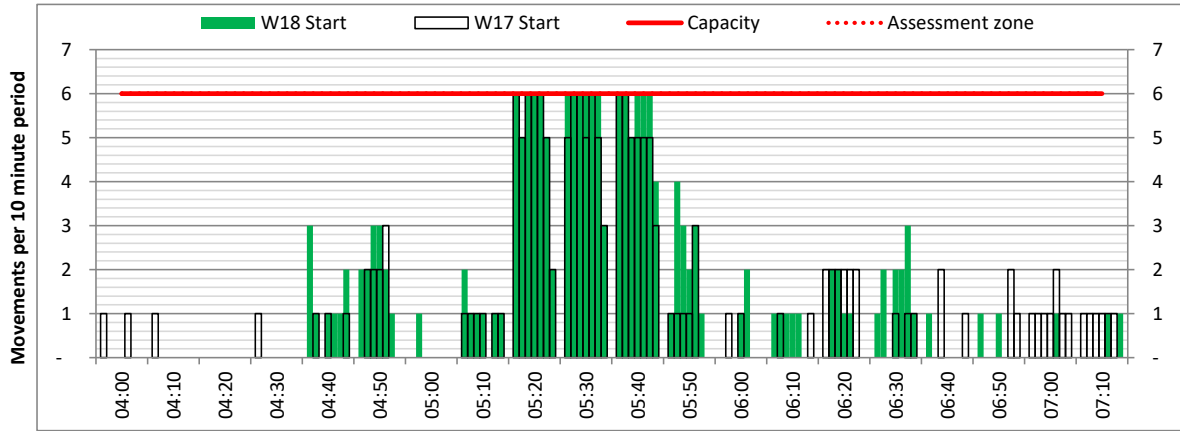


ARRIVAL - 10 minute count rolling every 10 mins (R10)

Terminals: All Terminals

Operators: All Operators

Days: 1234567





# Peak Week - Movements Histogram

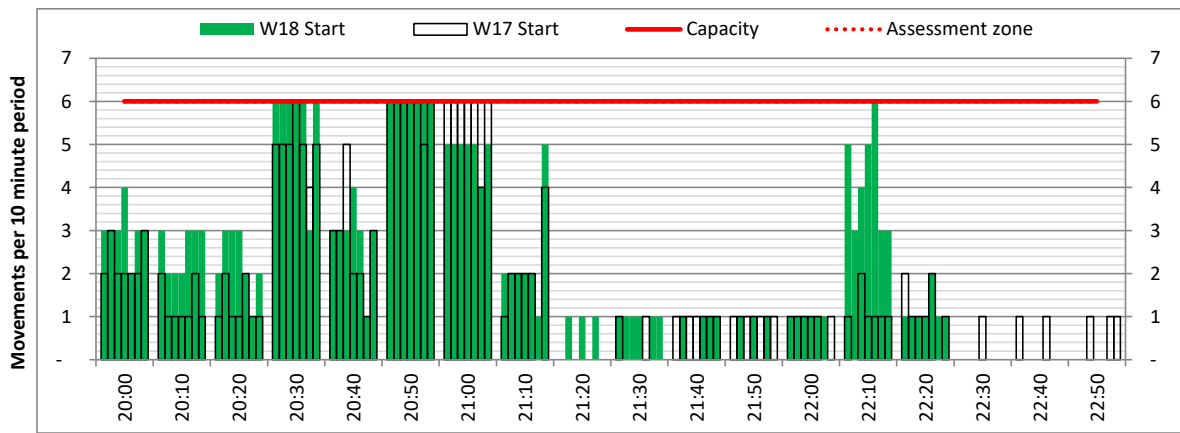
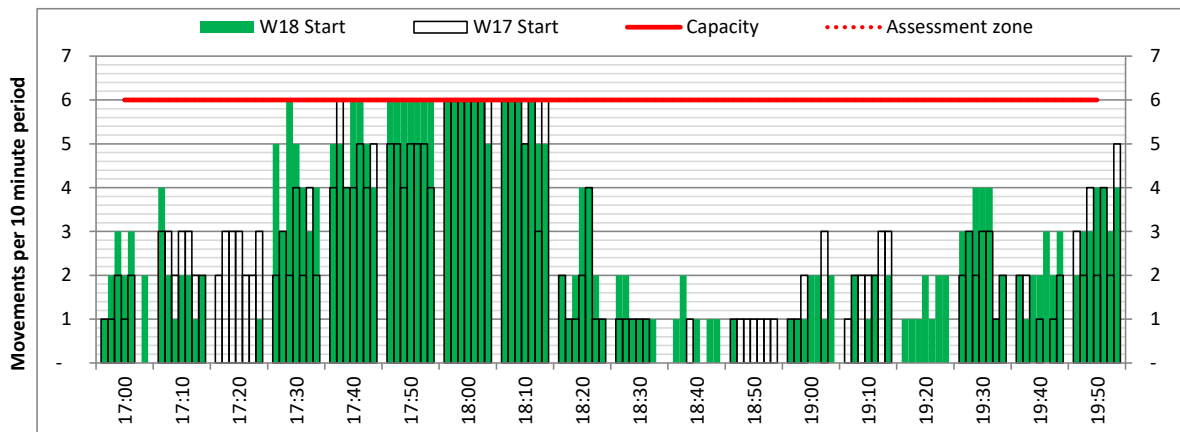
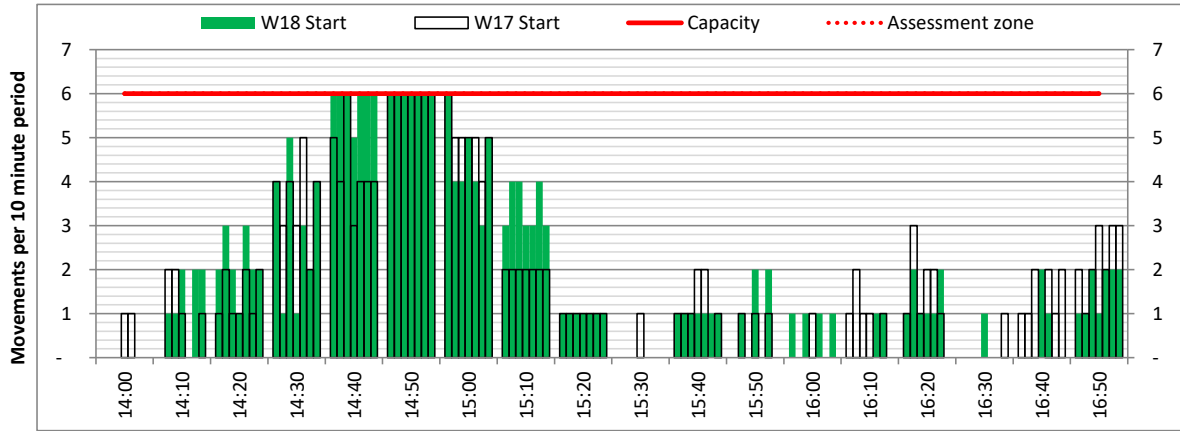


ARRIVAL - 10 minute count rolling every 10 mins (R10)

Terminals: All Terminals

Operators: All Operators

Days: 1234567



# Peak Week - Movements Histogram

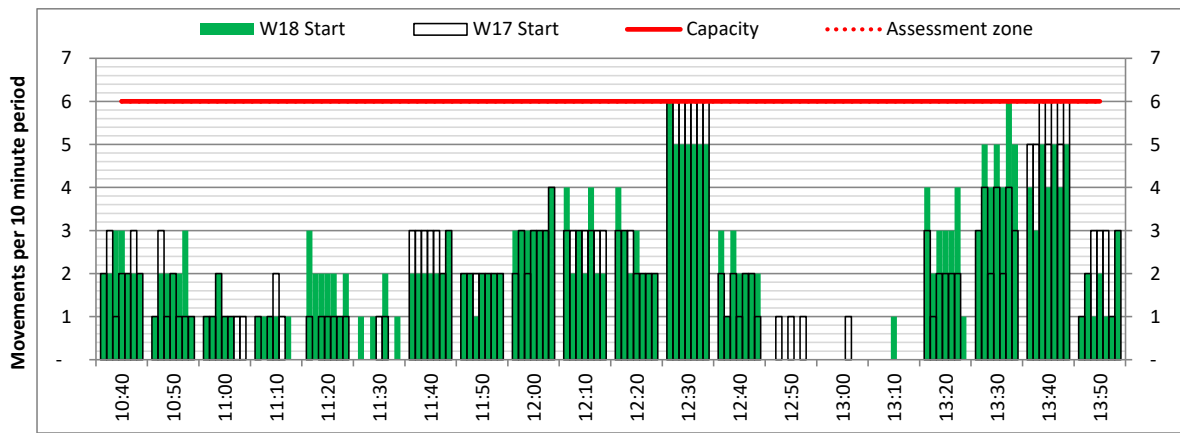
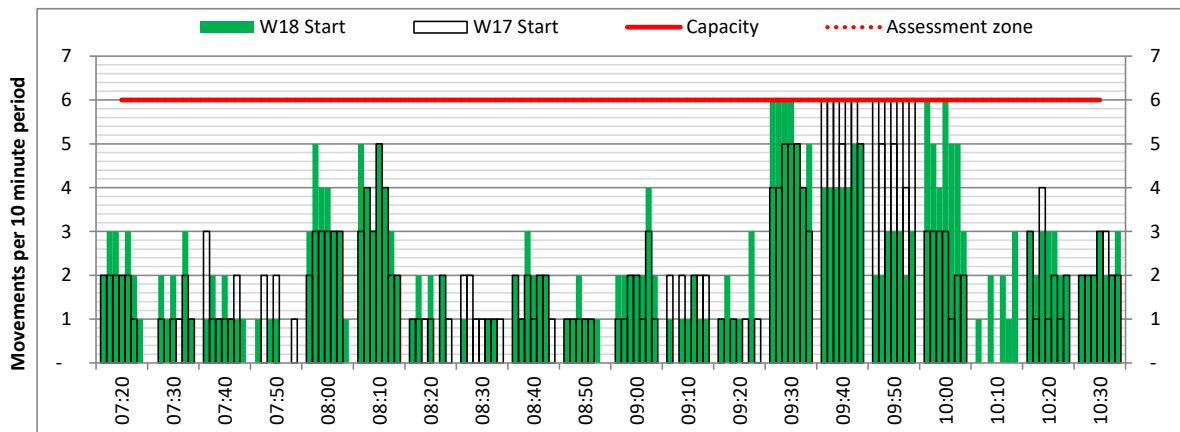
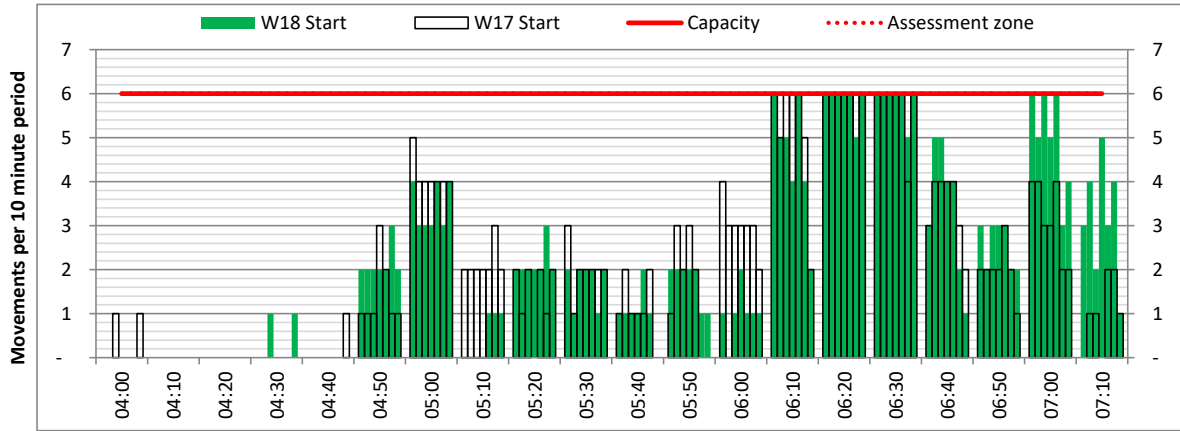


DEPARTURE - 10 minute count rolling every 10 mins (R10)

Terminals: All Terminals

Operators: All Operators

Days: 1234567



# Peak Week - Movements Histogram

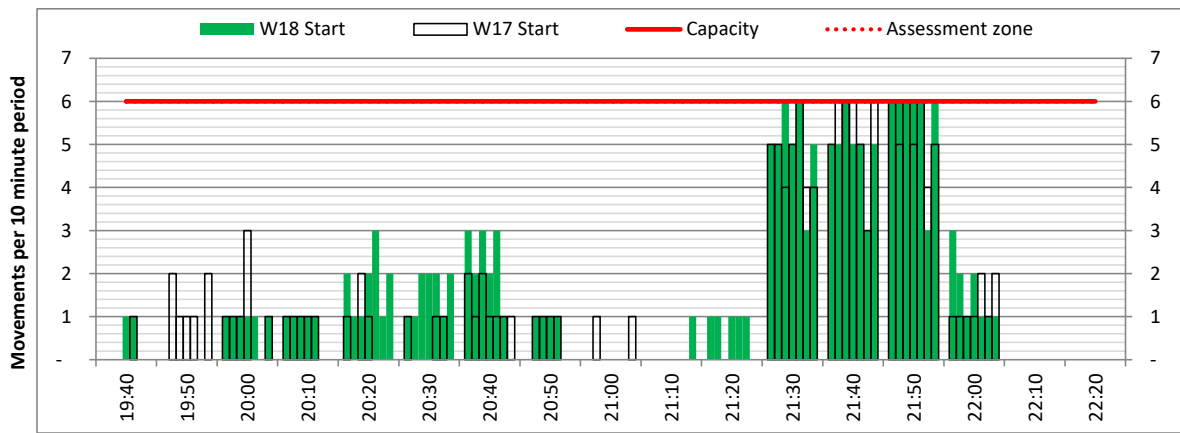
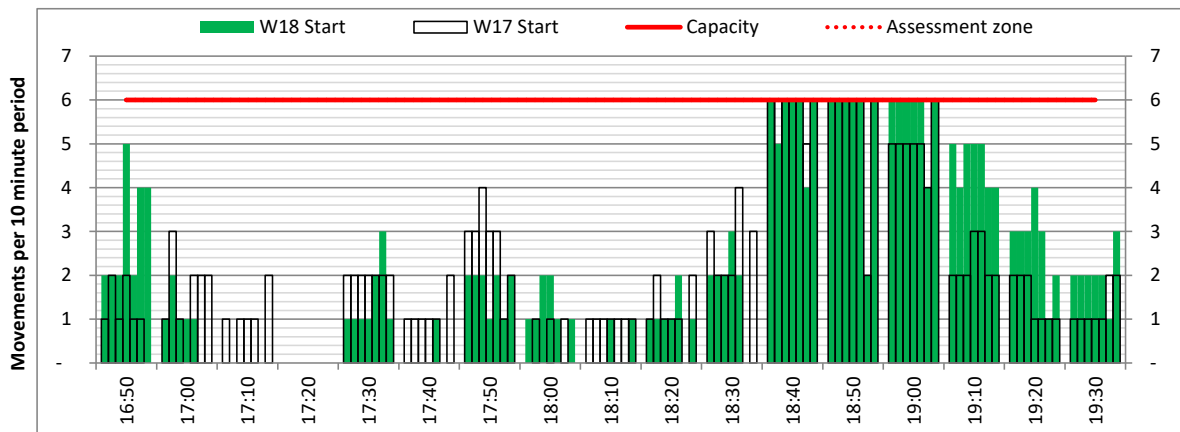
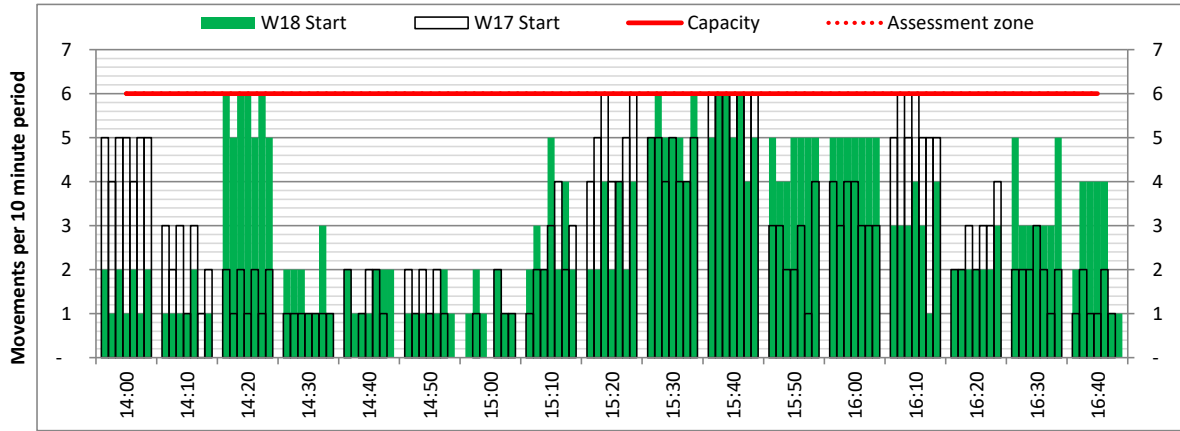


DEPARTURE - 10 minute count rolling every 10 mins (R10)

Terminals: All Terminals

Operators: All Operators

Days: 1234567



# Peak Week - Passengers Histogram

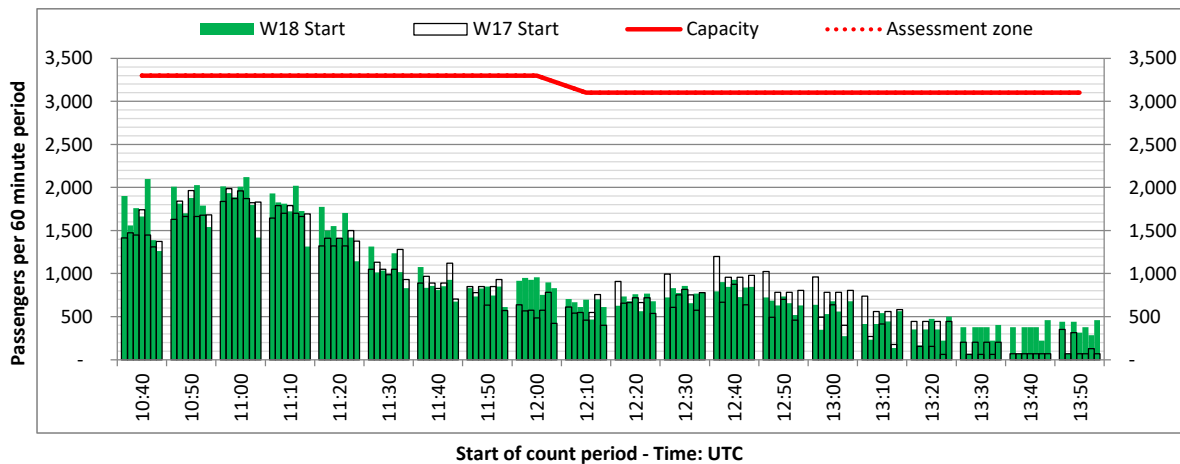
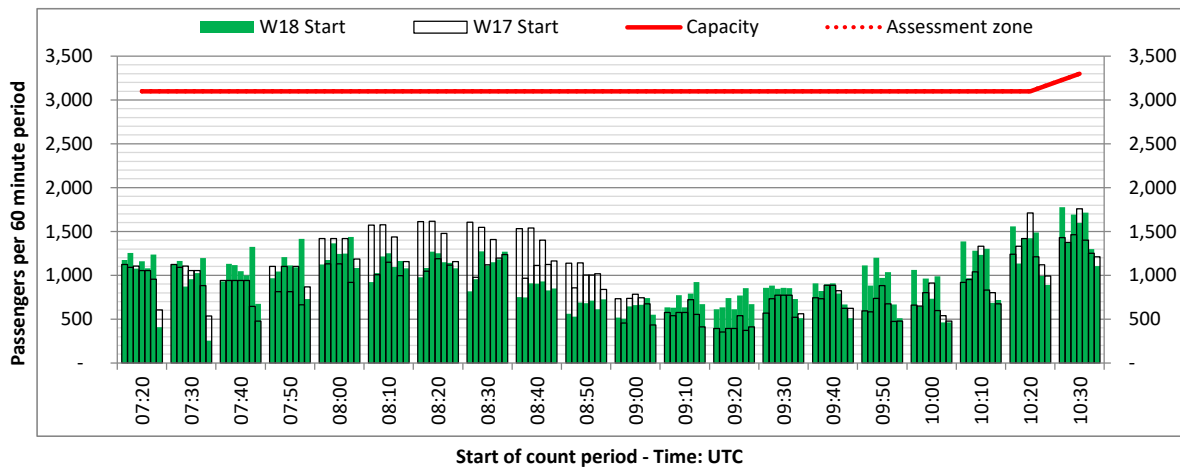
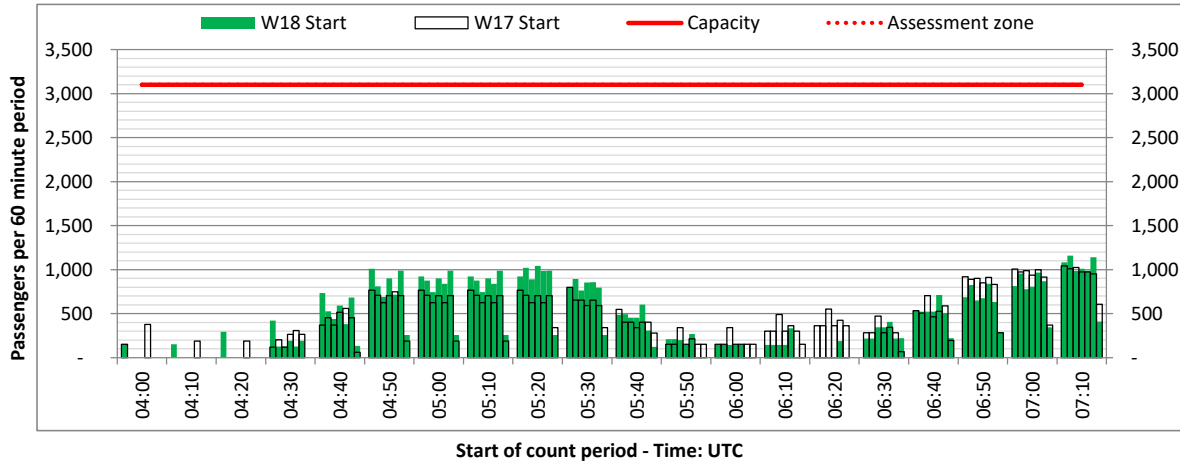
ARRIVAL - 60 minute count rolling every 10 mins (T60/10)



Terminals: Schengen

Operators: All Operators

Days: 1234567



# Peak Week - Passengers Histogram

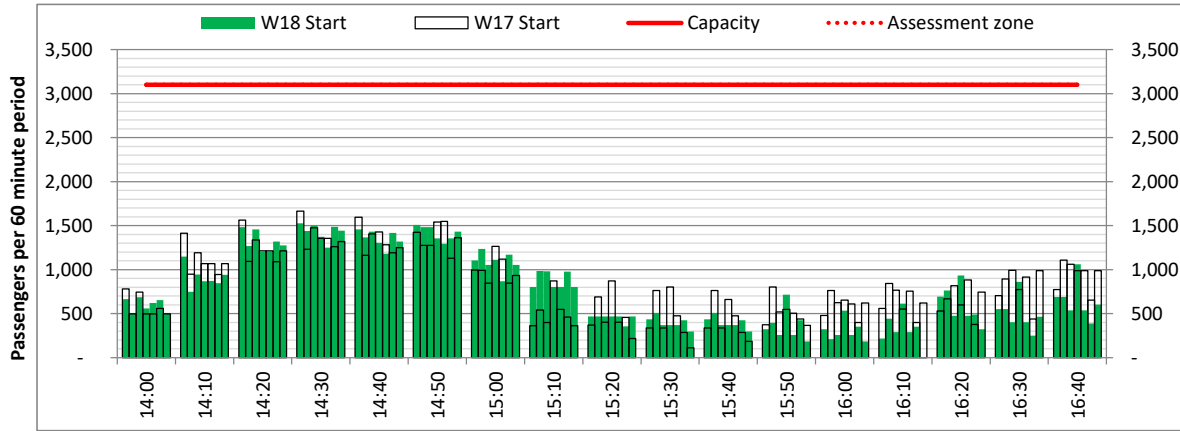
ARRIVAL - 60 minute count rolling every 10 mins (T60/10)



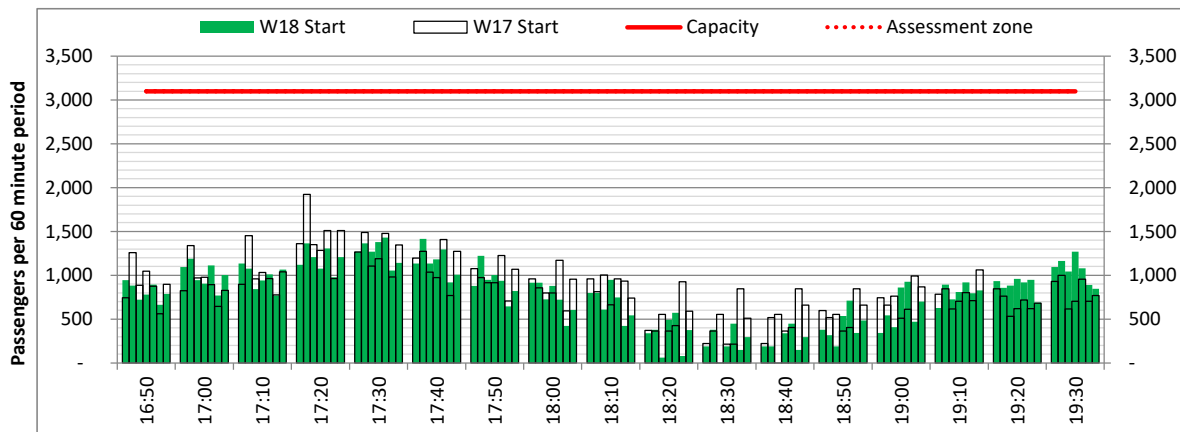
Terminals: Schengen

Operators: All Operators

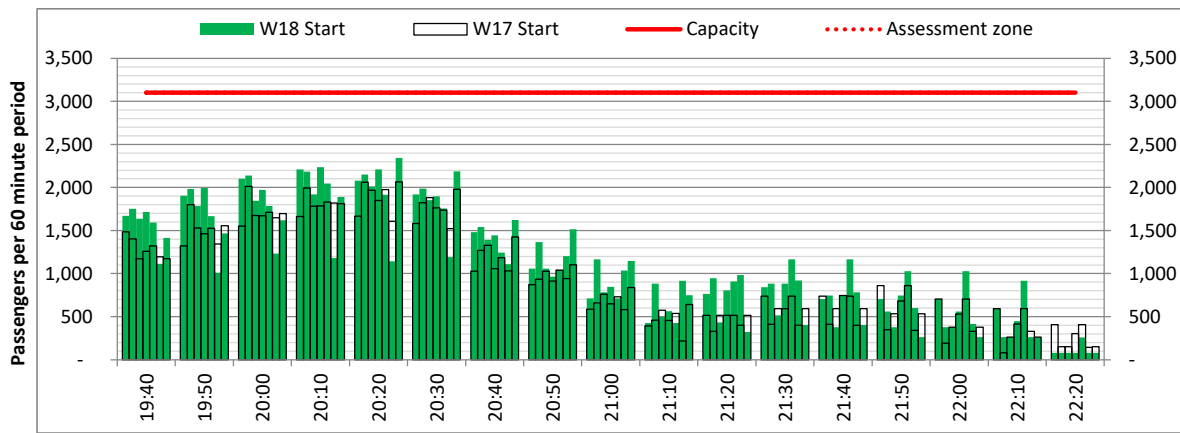
Days: 1234567



Start of count period - Time: UTC



Start of count period - Time: UTC



Start of count period - Time: UTC

# Peak Week - Passengers Histogram

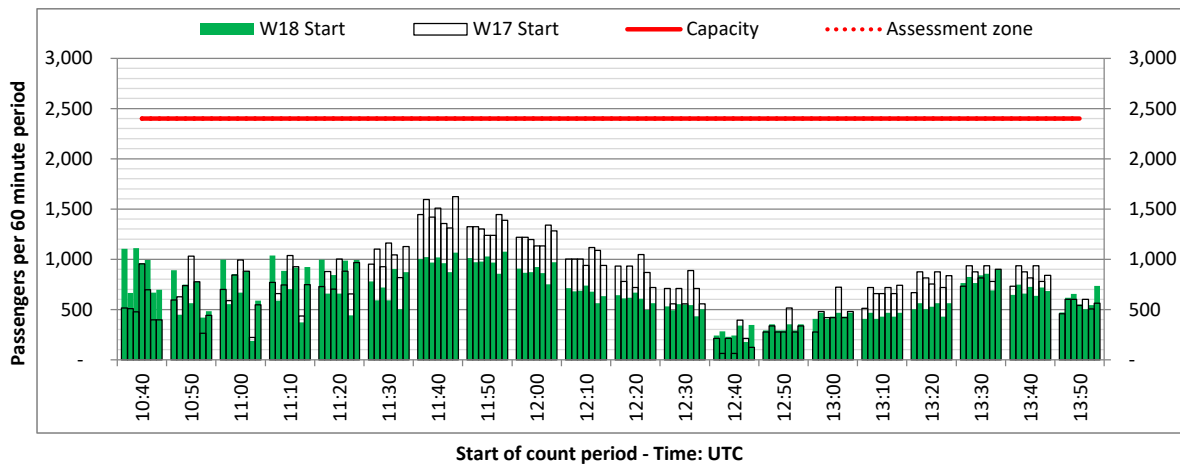
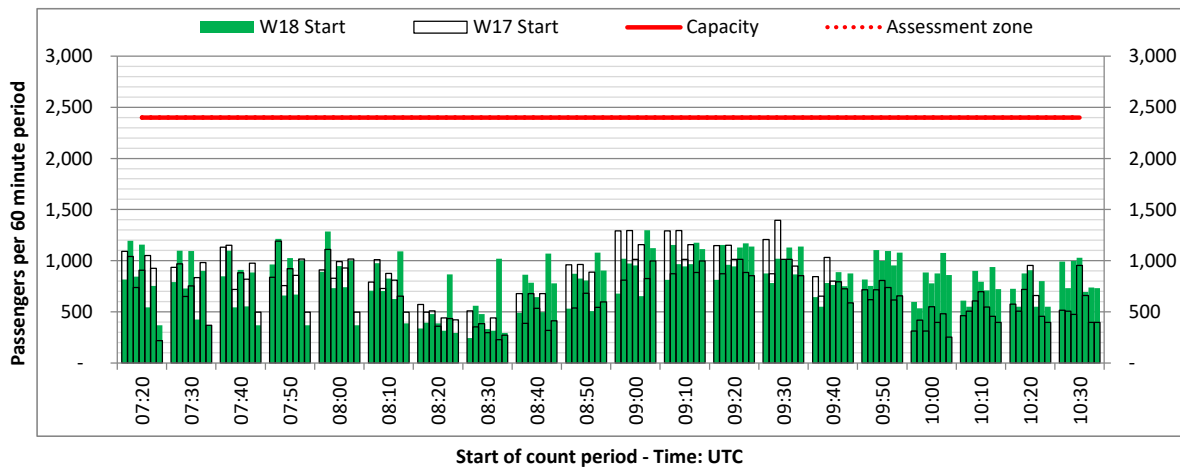
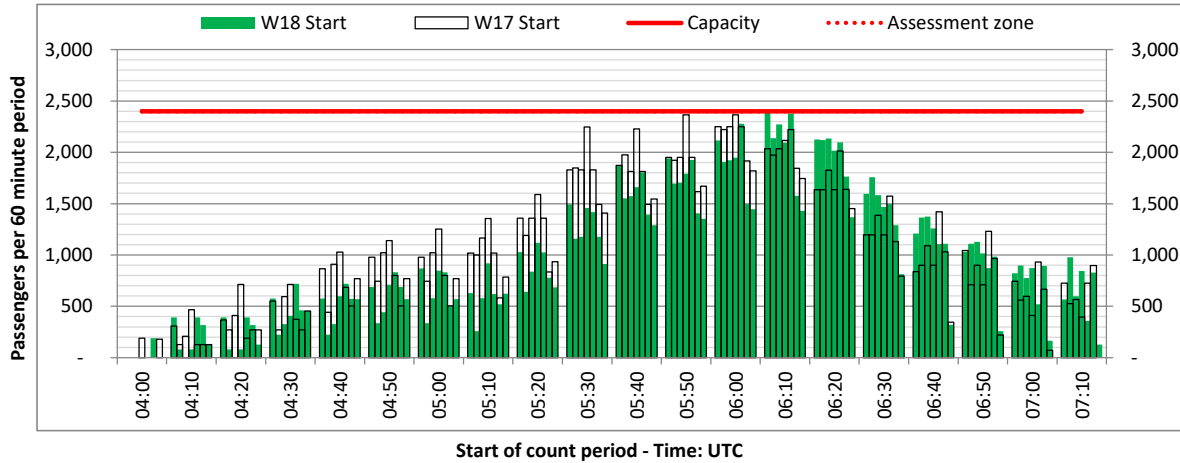
DEPARTURE - 60 minute count rolling every 10 mins (T60/10)



Terminals: Schengen

Operators: All Operators

Days: 1234567



# Peak Week - Passengers Histogram

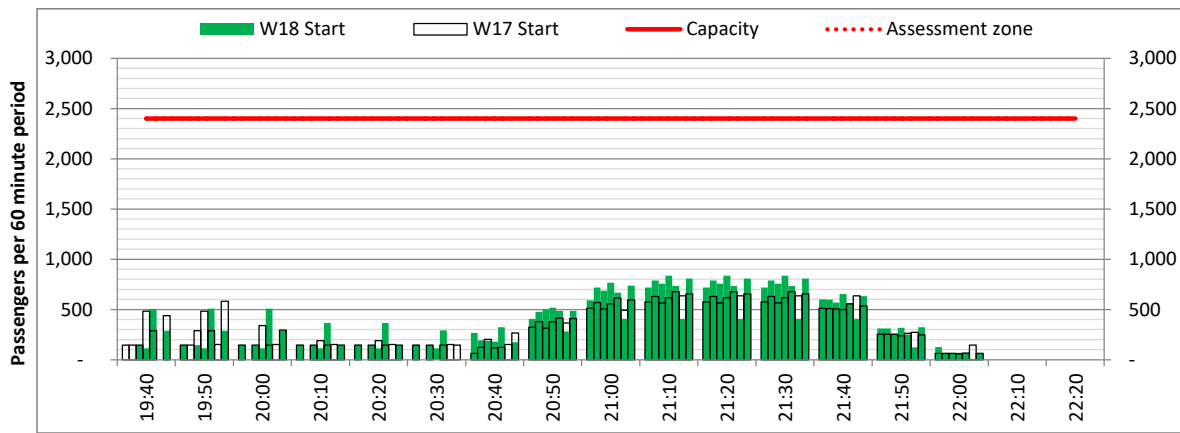
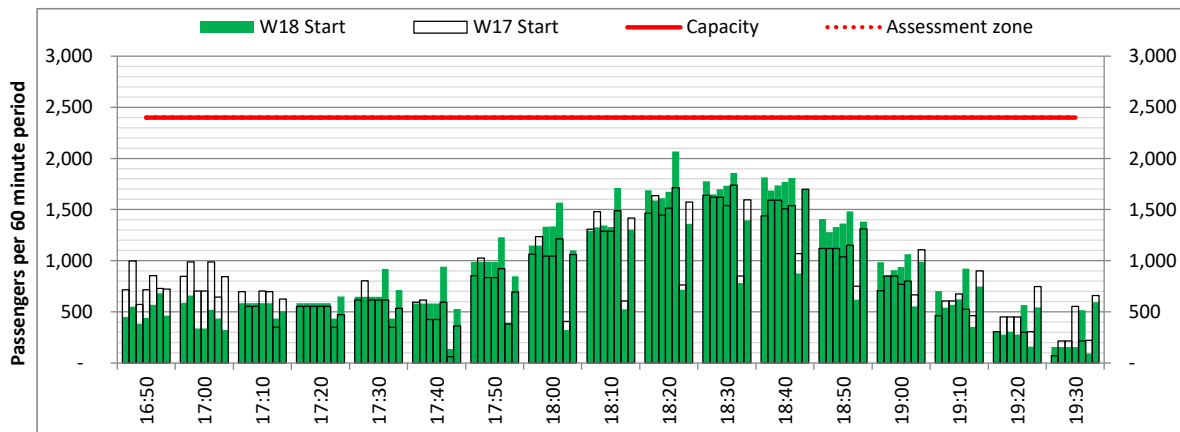
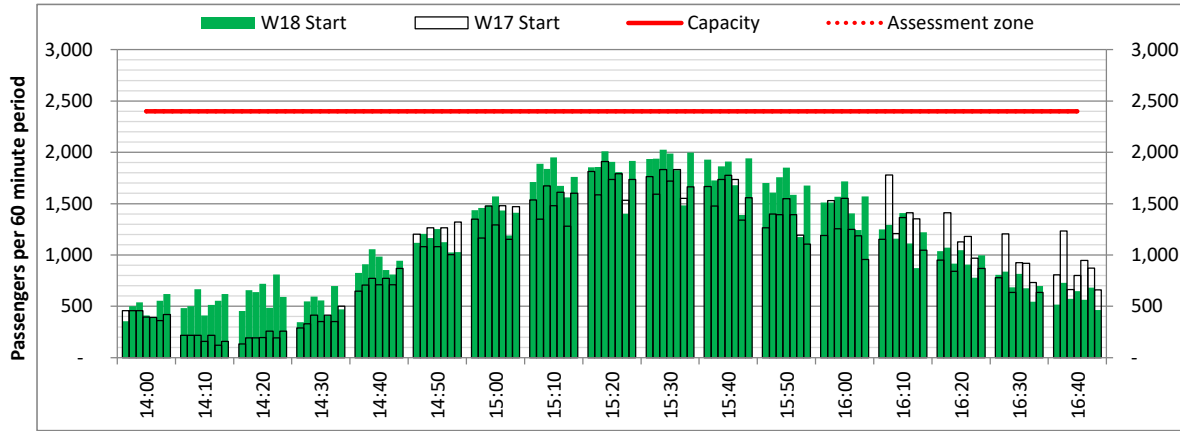
DEPARTURE - 60 minute count rolling every 10 mins (T60/10)



Terminals: Schengen

Operators: All Operators

Days: 1234567



# Peak Week - Passengers Histogram

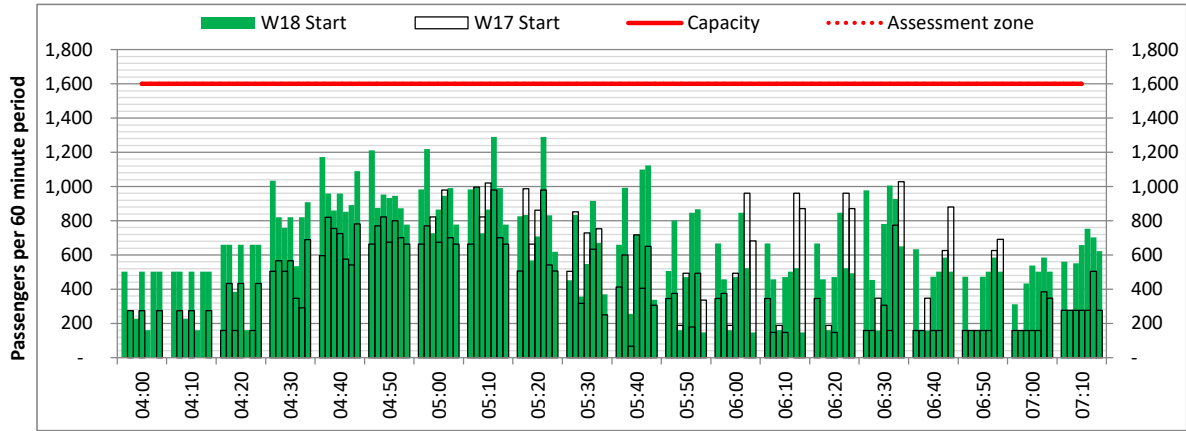
ARRIVAL - 60 minute count rolling every 10 mins (T60/10)



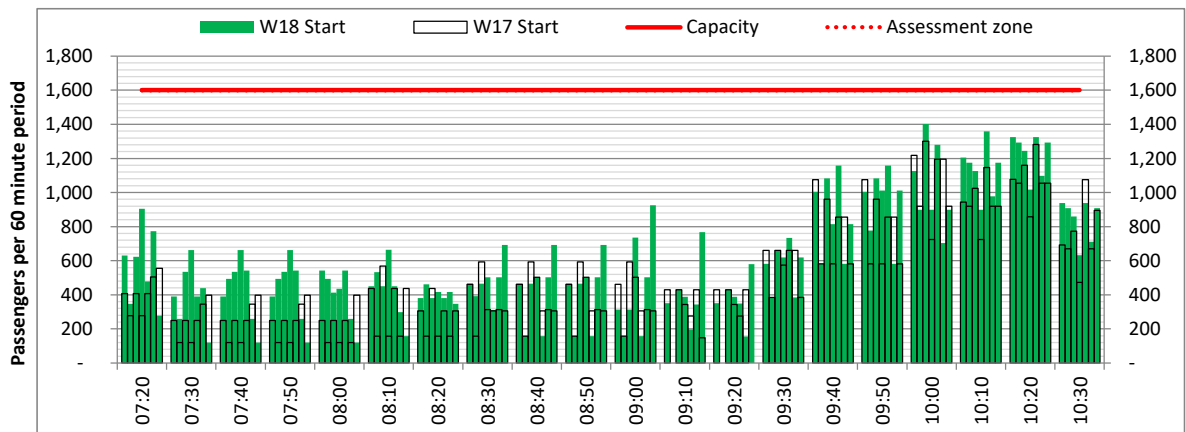
Terminals: Non Schengen

Operators: All Operators

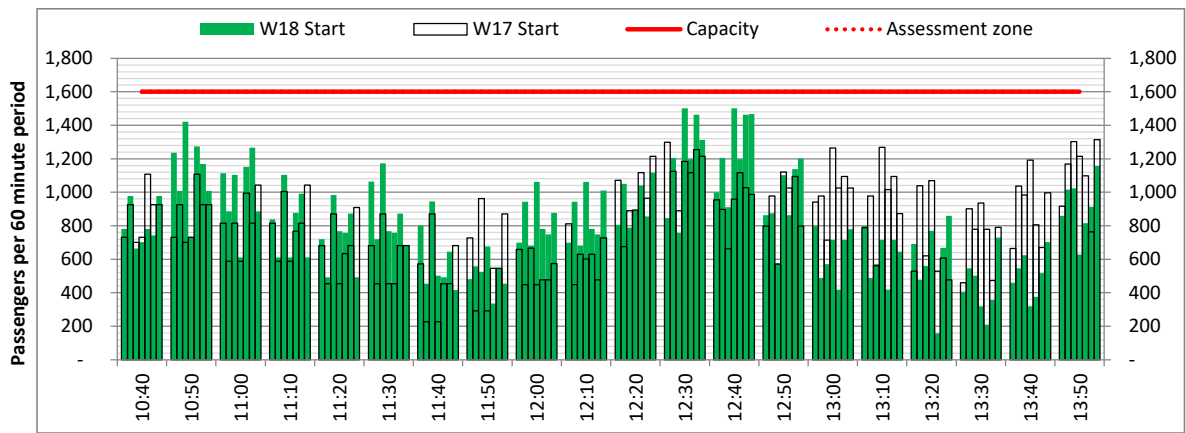
Days: 1234567



Start of count period - Time: UTC



Start of count period - Time: UTC



Start of count period - Time: UTC



# Peak Week - Passengers Histogram

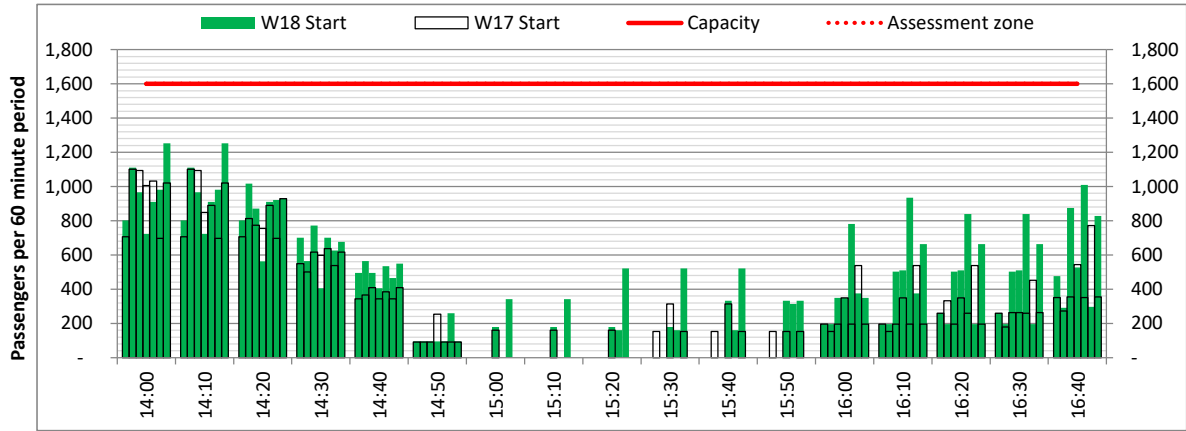
ARRIVAL - 60 minute count rolling every 10 mins (T60/10)



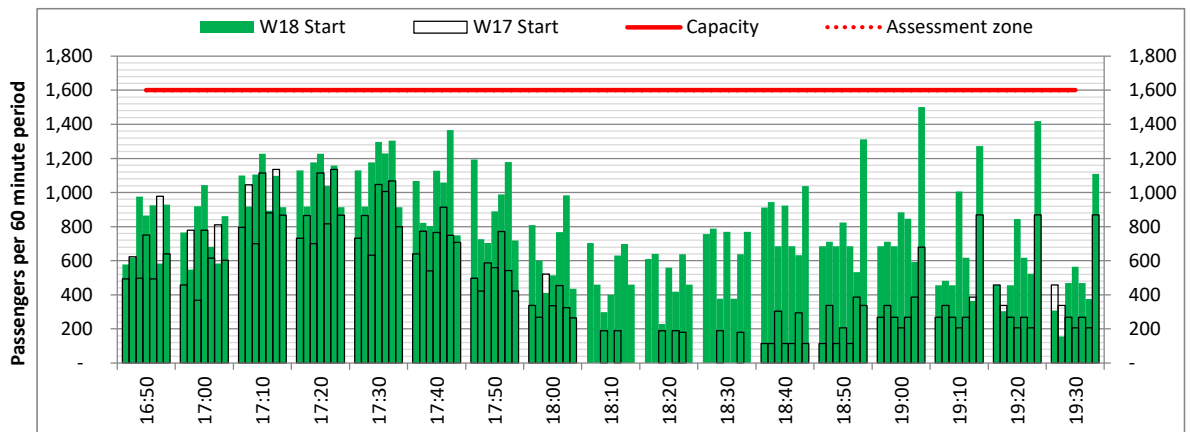
Terminals: Non Schengen

Operators: All Operators

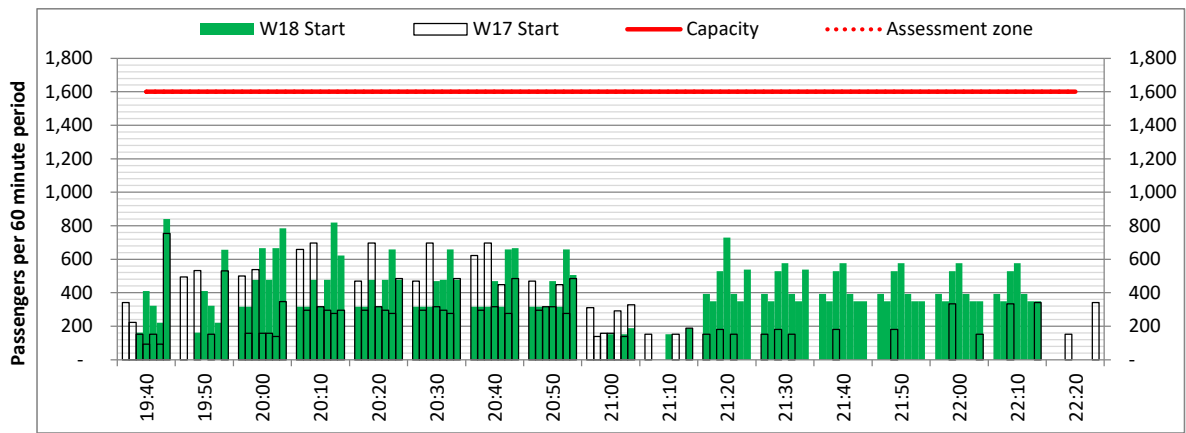
Days: 1234567



Start of count period - Time: UTC



Start of count period - Time: UTC



Start of count period - Time: UTC

# Peak Week - Passengers Histogram

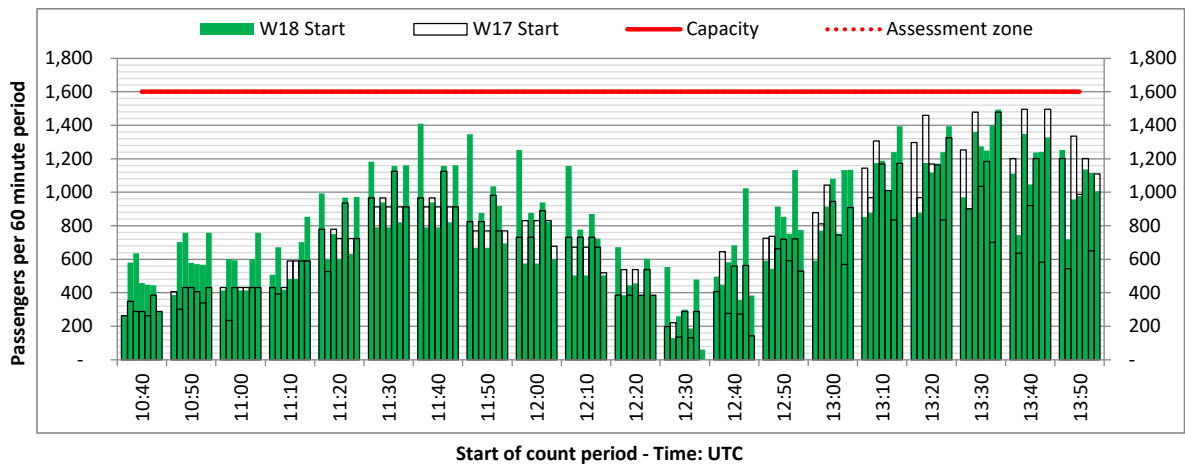
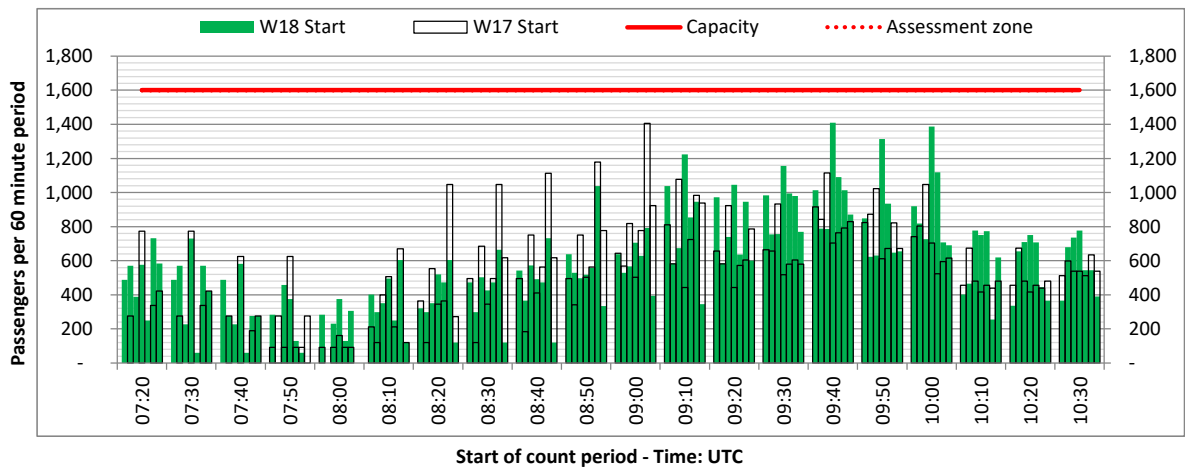
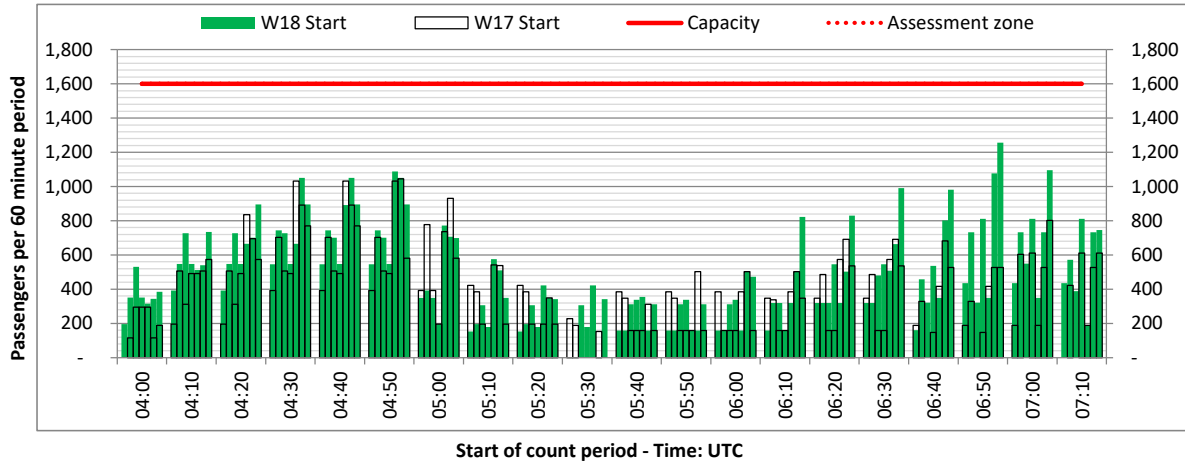
DEPARTURE - 60 minute count rolling every 10 mins (T60/10)



Terminals: Non Schengen

Operators: All Operators

Days: 1234567



# Peak Week - Passengers Histogram

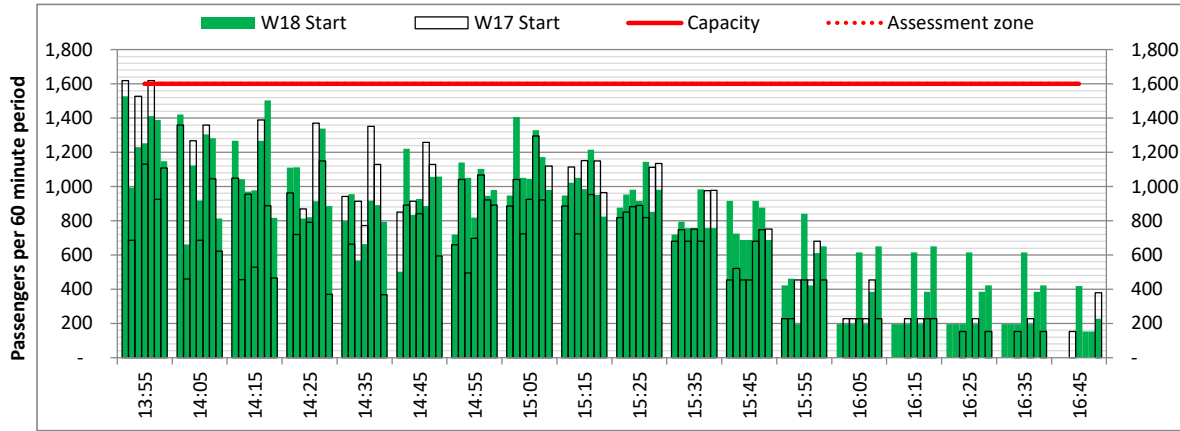


DEPARTURE - 60 minute count rolling every 10 mins (T60/10)

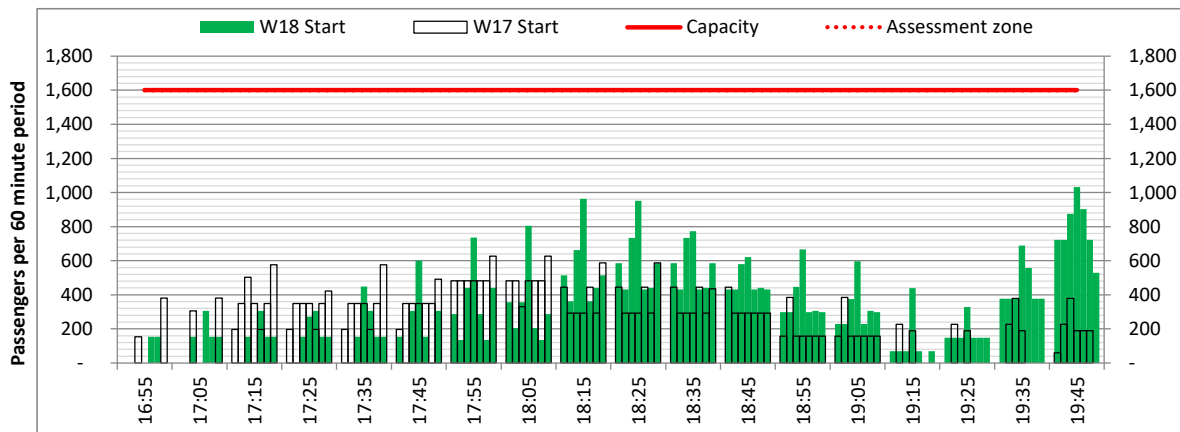
Terminals: Non Schengen

Operators: All Operators

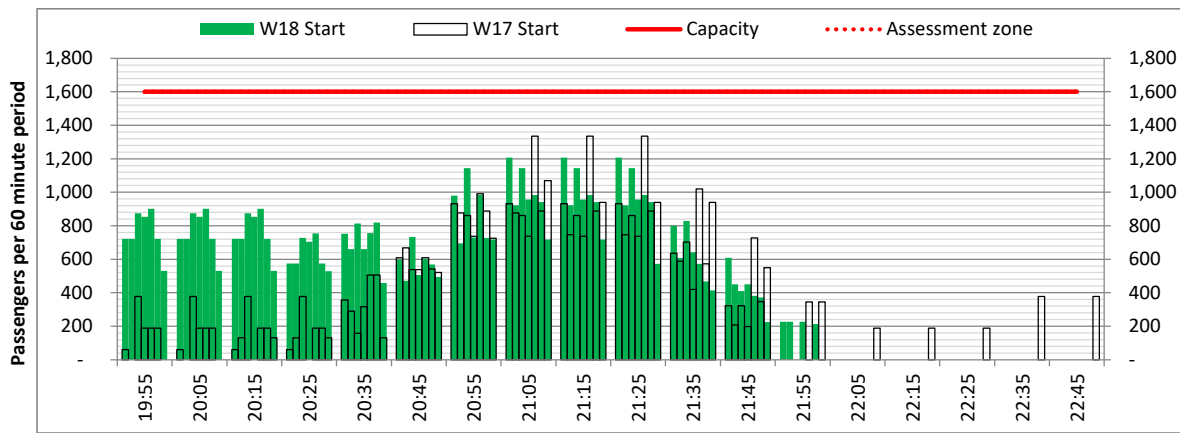
Days: 1234567



Start of count period - Time: UTC



Start of count period - Time: UTC



Start of count period - Time: UTC

# Peak Week - Passengers Histogram

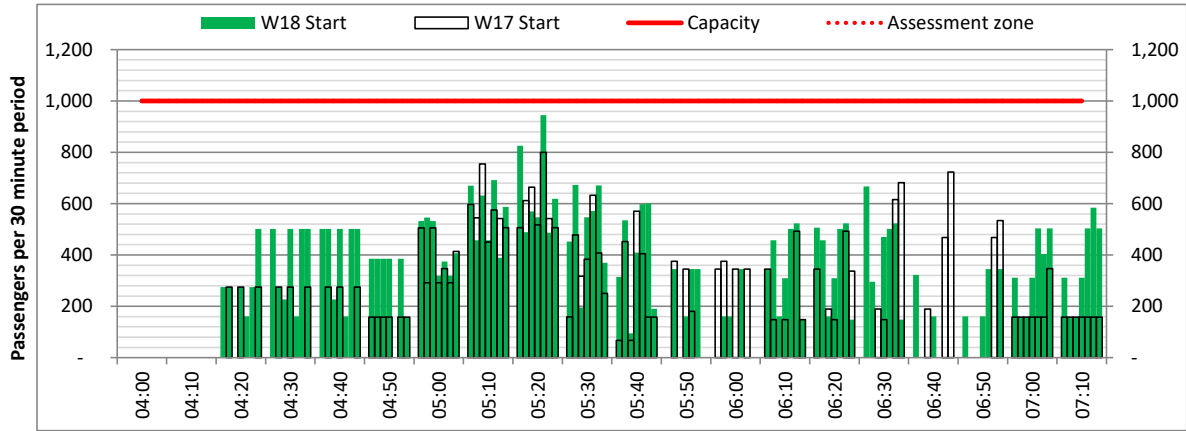


ARRIVAL - 30 minute count rolling every 10 mins (T30/10)

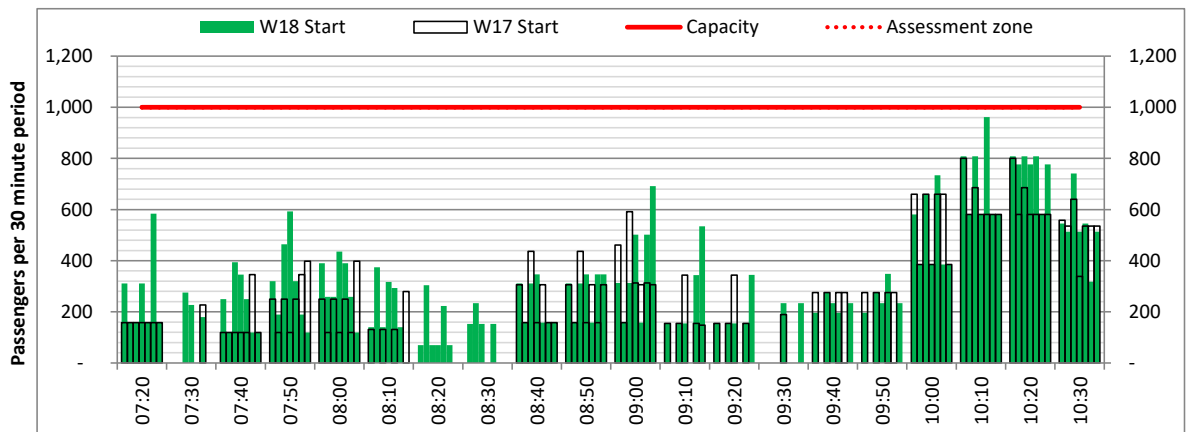
Terminals: Non Schengen

Operators: All Operators

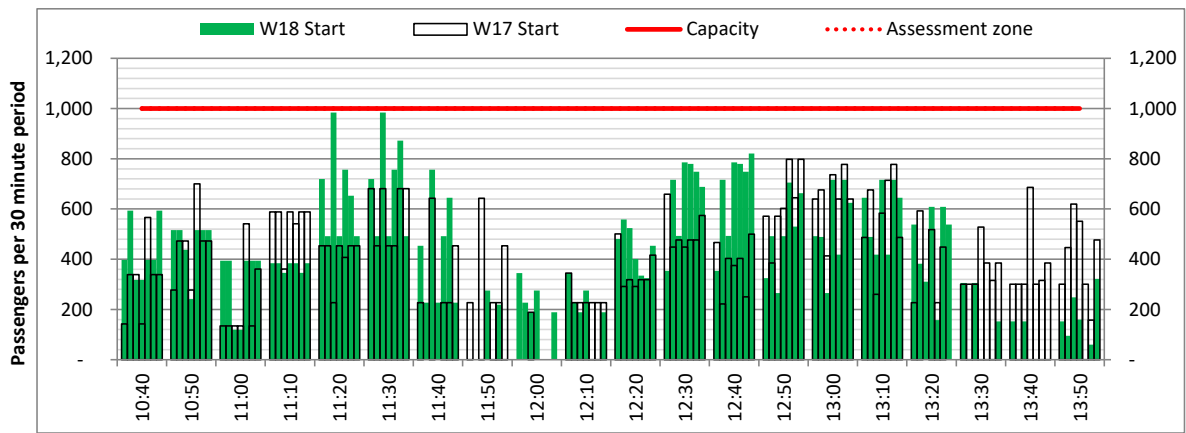
Days: 1234567



Start of count period - Time: UTC



Start of count period - Time: UTC



Start of count period - Time: UTC

# Peak Week - Passengers Histogram

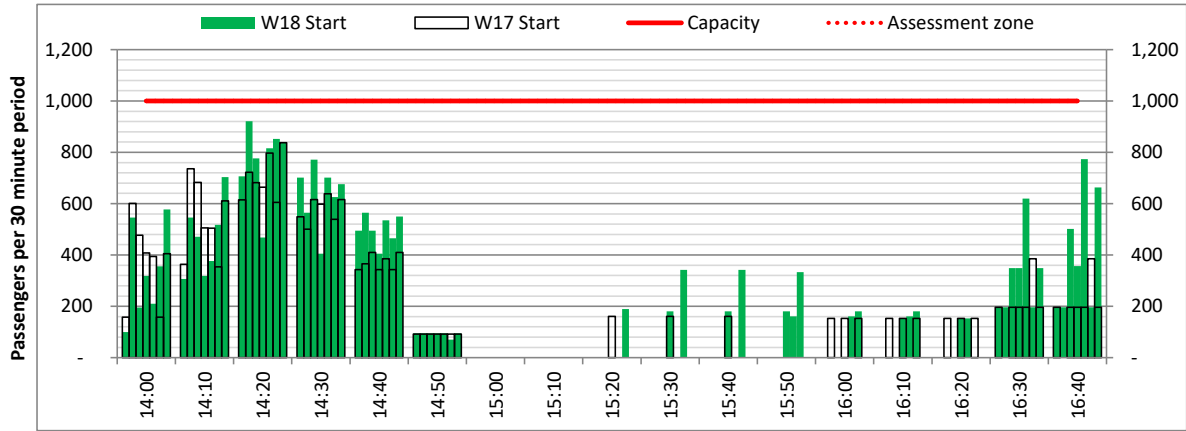


ARRIVAL - 30 minute count rolling every 10 mins (T30/10)

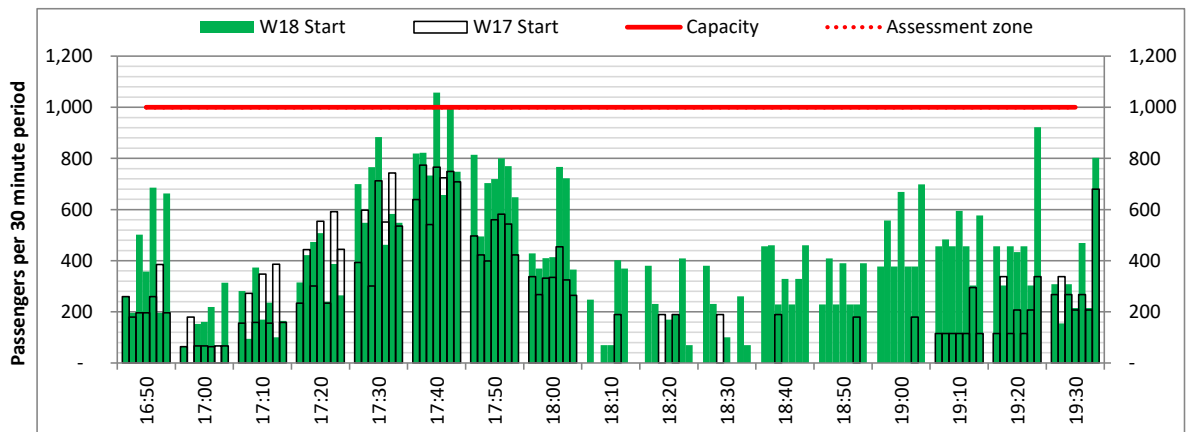
Terminals: Non Schengen

Operators: All Operators

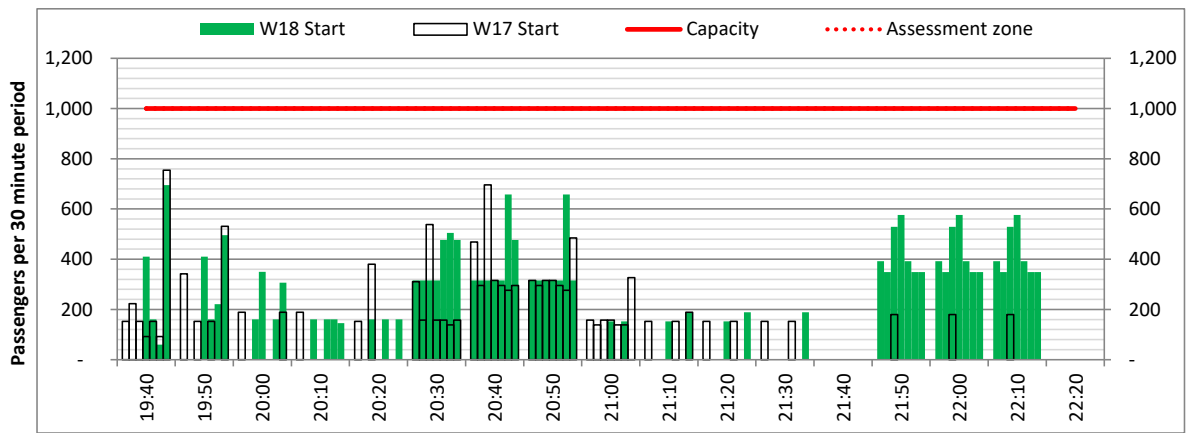
Days: 1234567



Start of count period - Time: UTC



Start of count period - Time: UTC



Start of count period - Time: UTC

# Peak Week - Passengers Histogram

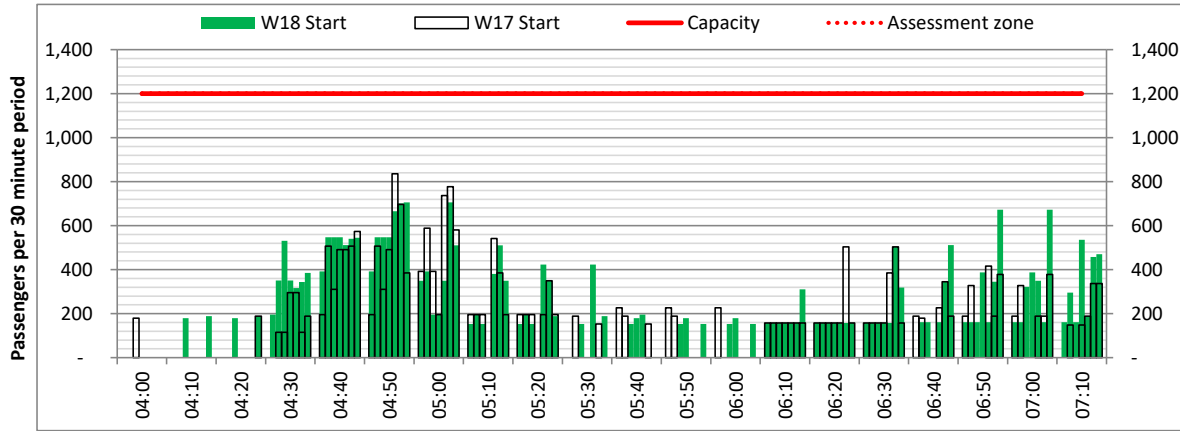
DEPARTURE - 30 minute count rolling every 10 mins (T30/10)



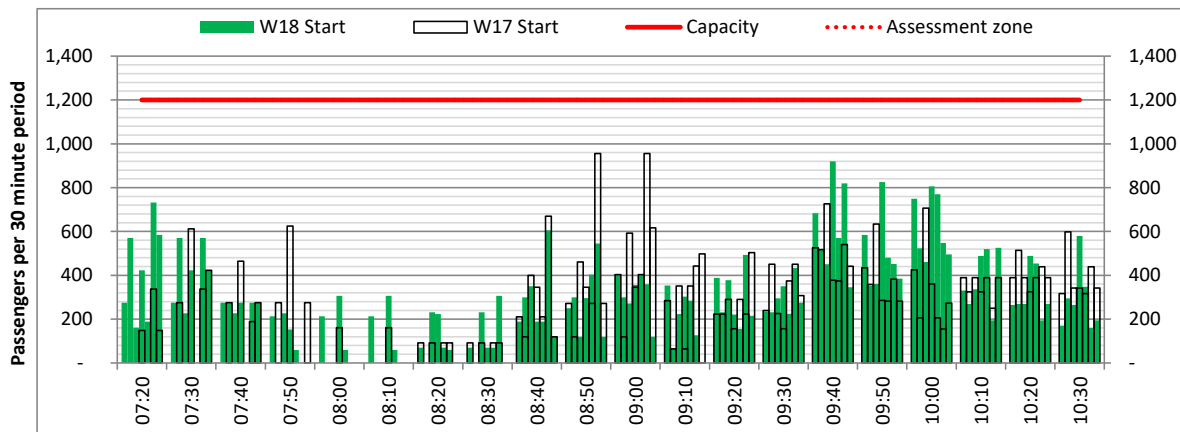
Terminals: Non Schengen

Operators: All Operators

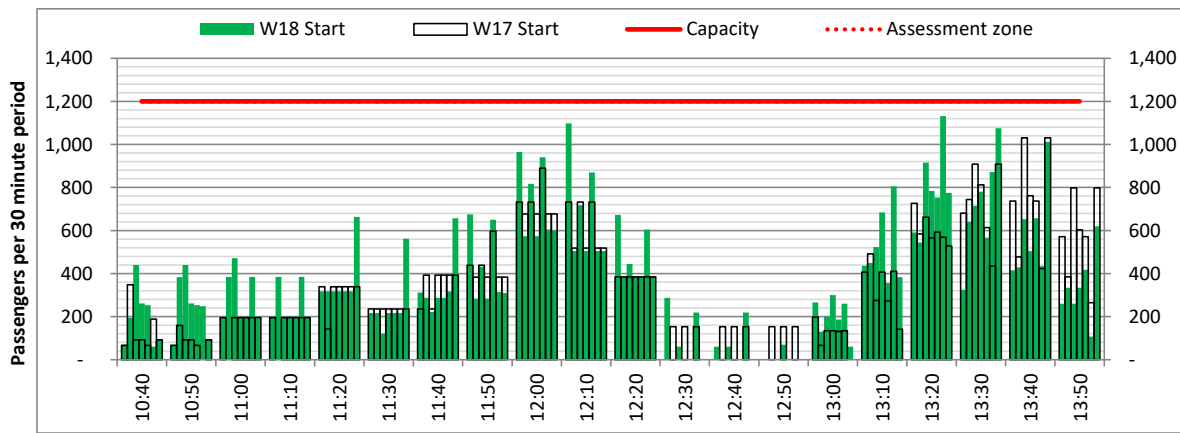
Days: 1234567



Start of count period - Time: UTC



Start of count period - Time: UTC



Start of count period - Time: UTC

# Peak Week - Passengers Histogram

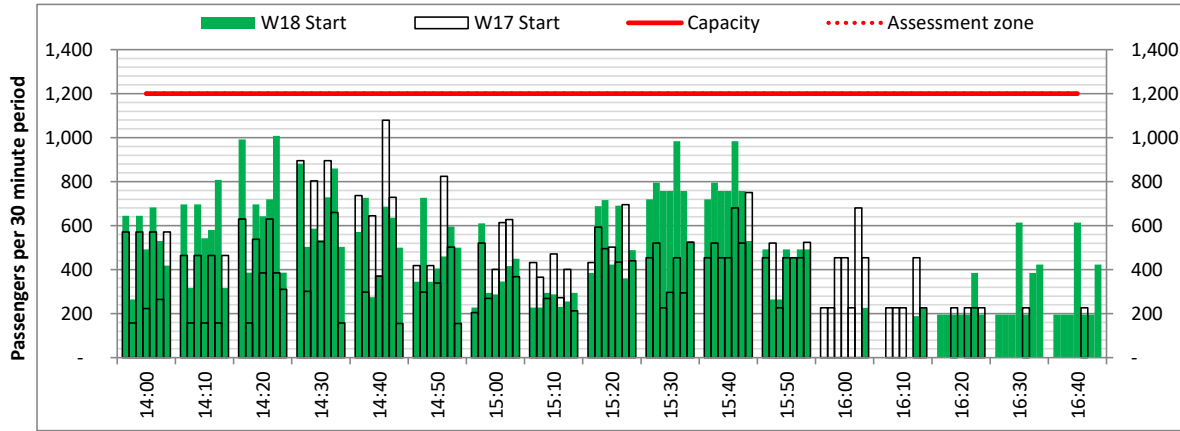
DEPARTURE - 30 minute count rolling every 10 mins (T30/10)



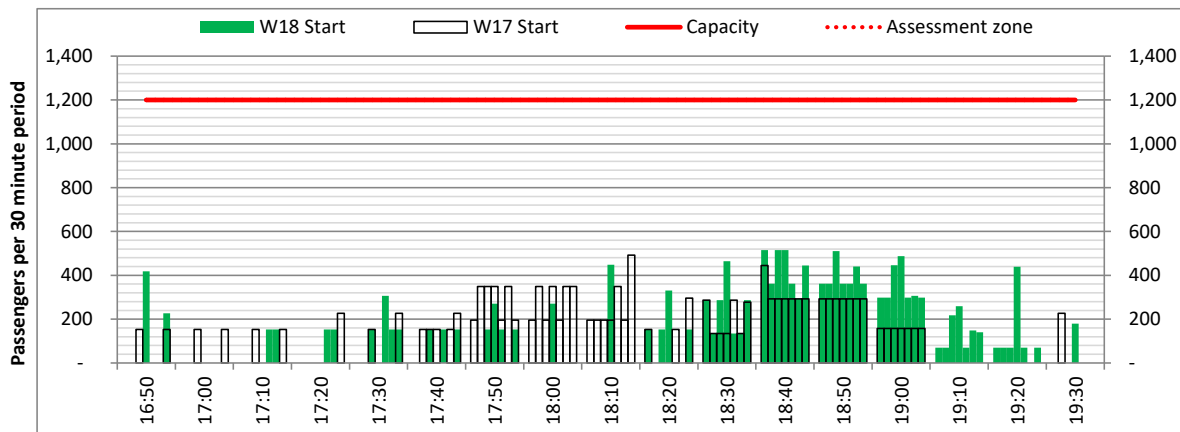
Terminals: Non Schengen

Operators: All Operators

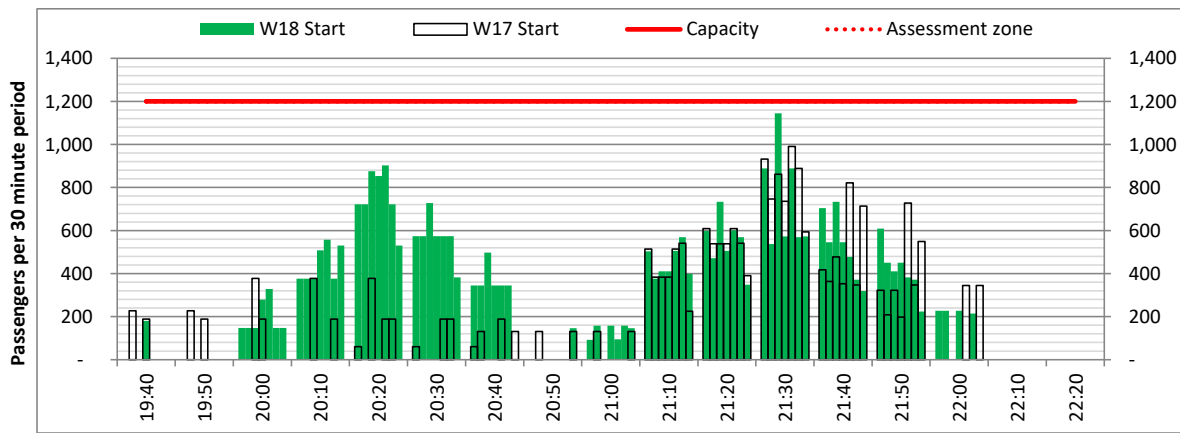
Days: 1234567



Start of count period - Time: UTC



Start of count period - Time: UTC



Start of count period - Time: UTC

# Peak Week - Passengers Histogram

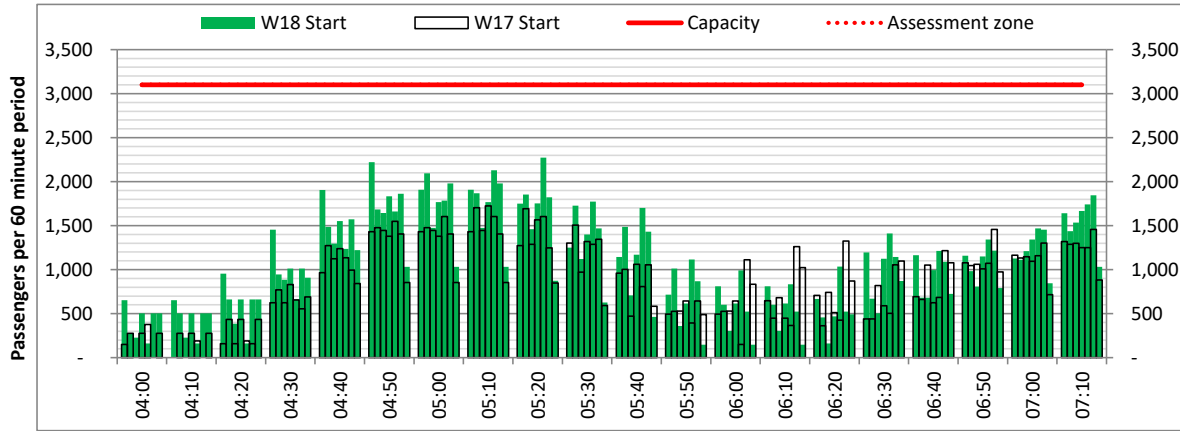
ARRIVAL - 60 minute count rolling every 10 mins (T60/10)



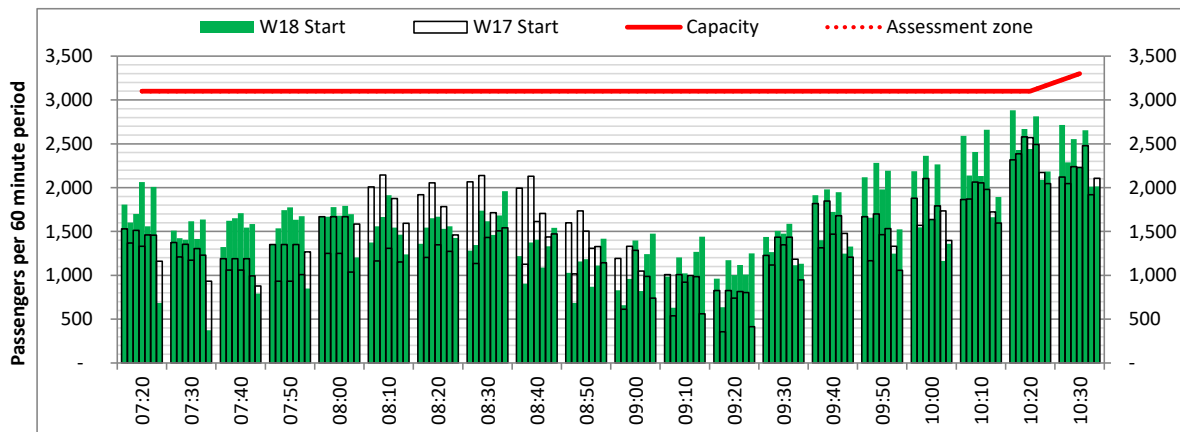
Terminals: All Terminals

Operators: All Operators

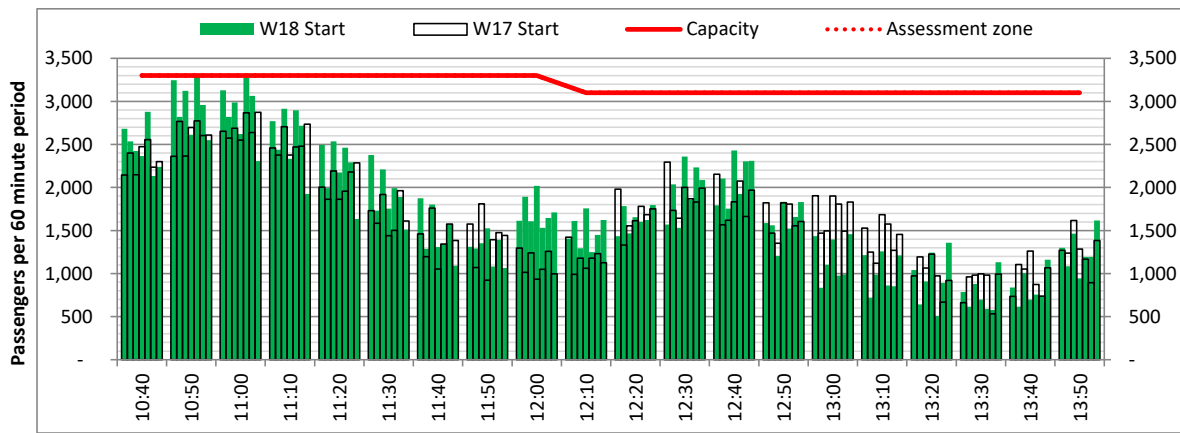
Days: 1234567



Start of count period - Time: UTC



Start of count period - Time: UTC



Start of count period - Time: UTC



# Peak Week - Passengers Histogram

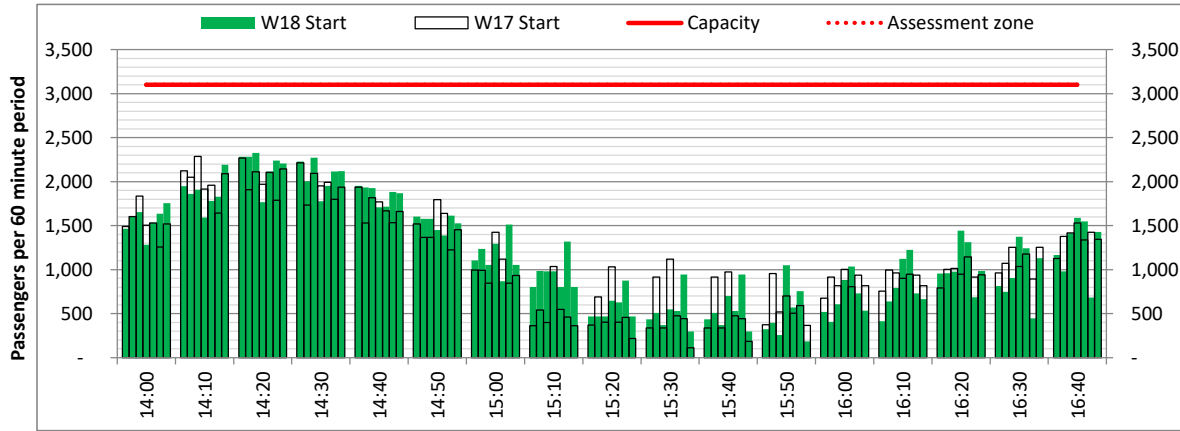


ARRIVAL - 60 minute count rolling every 10 mins (T60/10)

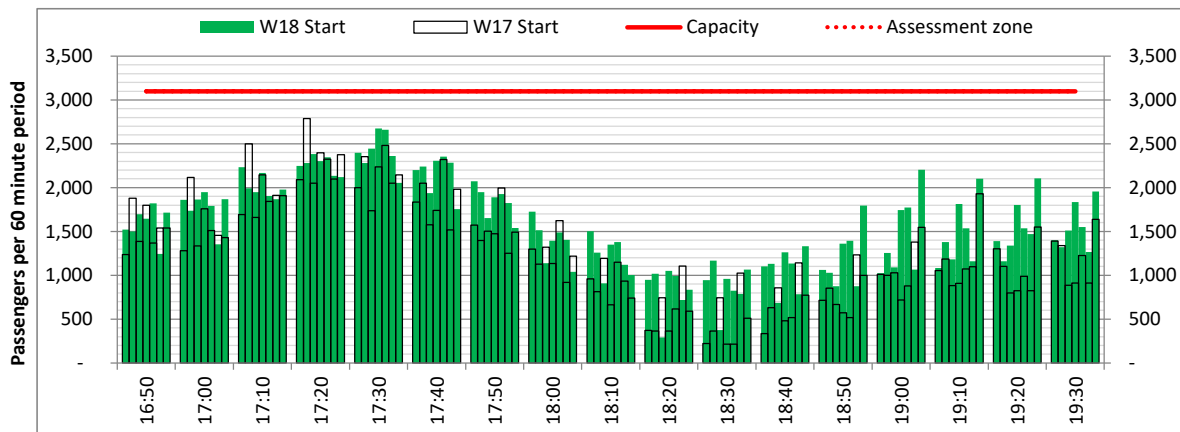
Terminals: All Terminals

Operators: All Operators

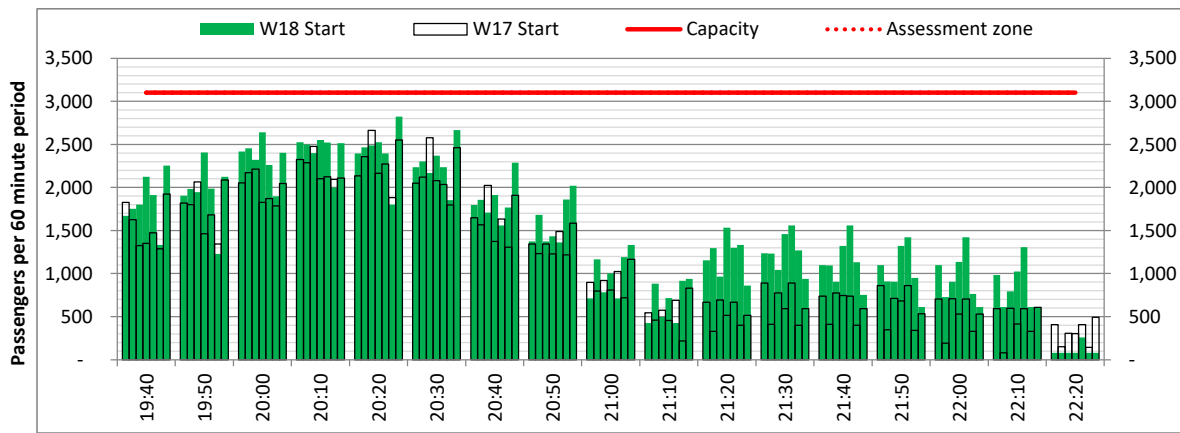
Days: 1234567



Start of count period - Time: UTC



Start of count period - Time: UTC



Start of count period - Time: UTC

# Peak Week - Passengers Histogram

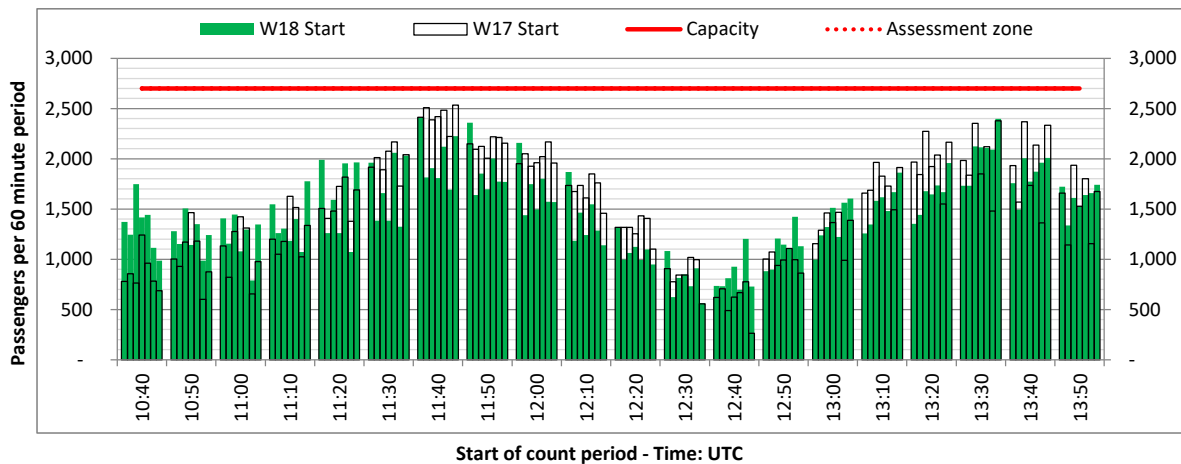
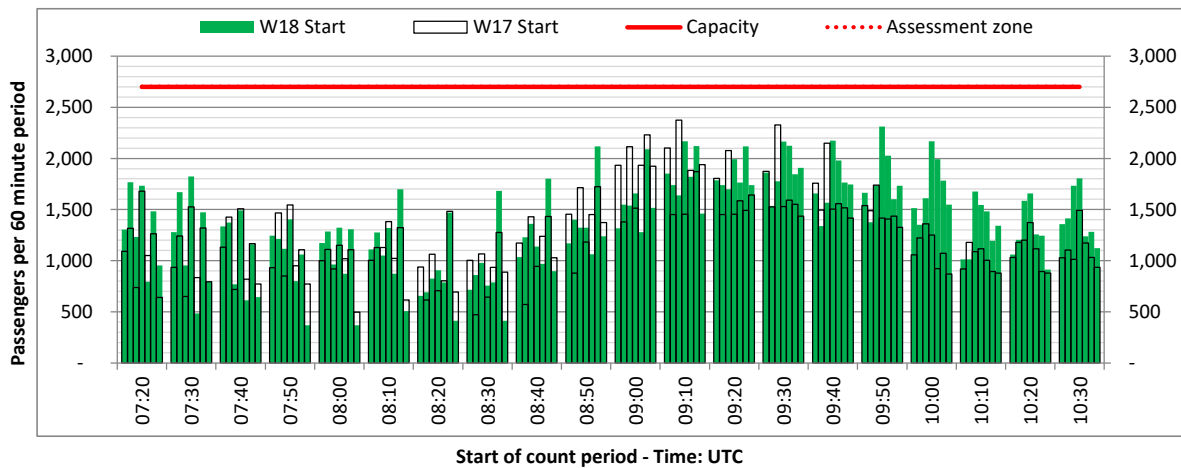
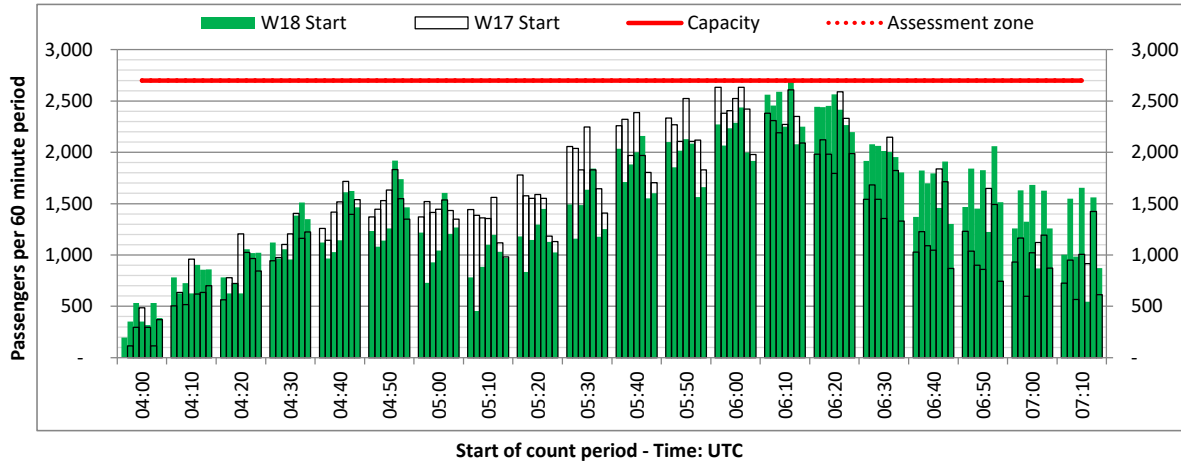
DEPARTURE - 60 minute count rolling every 10 mins (T60/10)



Terminals: All Terminals

Operators: All Operators

Days: 1234567



# Peak Week - Passengers Histogram

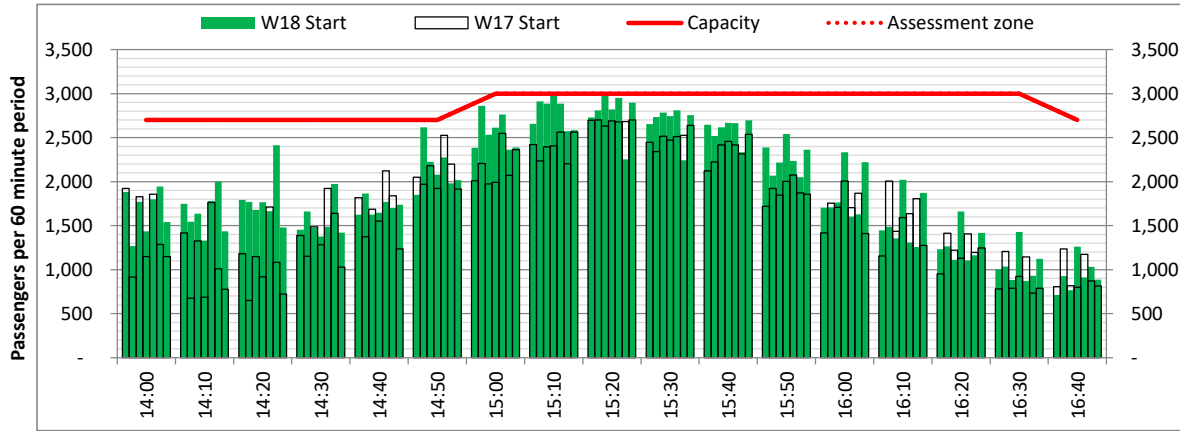
DEPARTURE - 60 minute count rolling every 10 mins (T60/10)



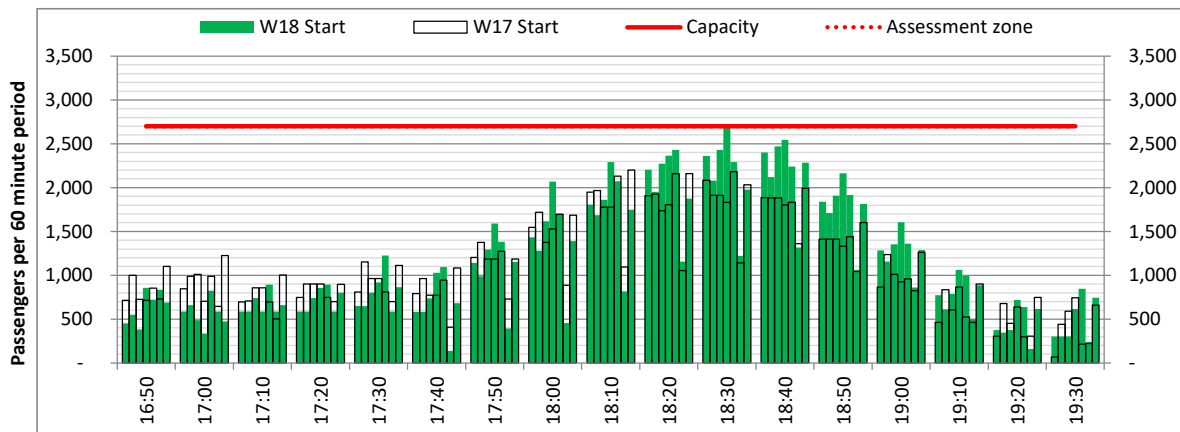
Terminals: All Terminals

Operators: All Operators

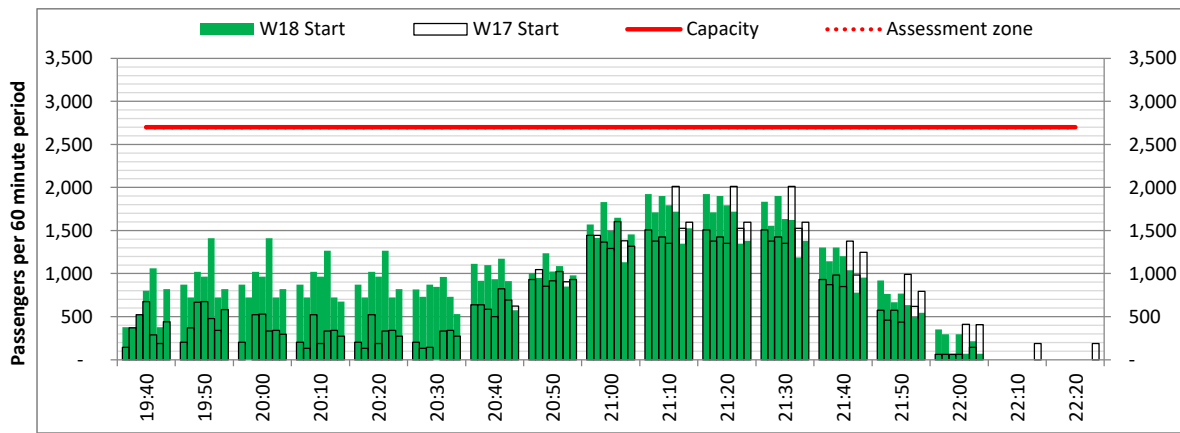
Days: 1234567



Start of count period - Time: UTC

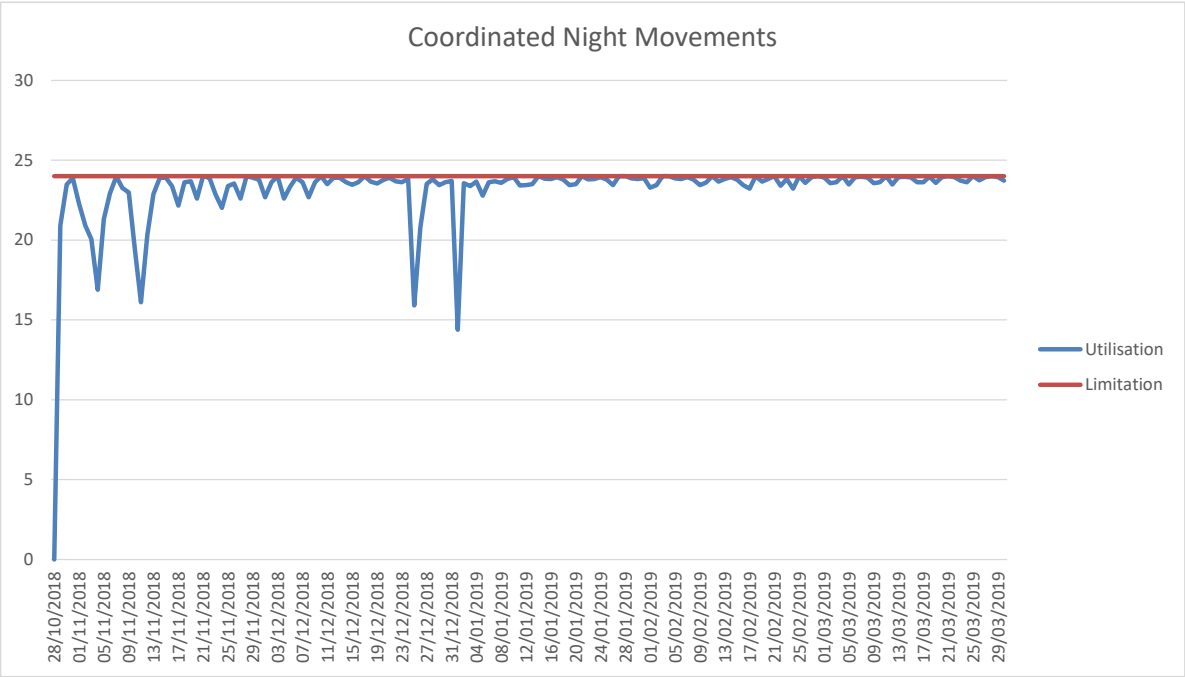


Start of count period - Time: UTC



Start of count period - Time: UTC

# Coordinated Night Movements



<b>Air Transport Movement (ATM)</b>	Any aircraft movement which is either a scheduled or chartered passenger or cargo flight.
<b>Common Travel Area (CTA)</b>	Origin or Destination is in Republic of Ireland or the Channel Islands.
<b>Demand</b>	Unconstrained demand before any schedule adjustments have been made.
<b>"Fill-in"</b>	These are gaps in a historic series of slots which the carrier requests to "Fill-in" at Initial Submissions - Fill-ins will be recognisably part of the historic series and will have the same flight details to qualify as a "Fill-in".
<b>Hist (SHL)</b>	Snapshot of historic schedule rolled over from end of the previous equivalent season - as advised to airlines in the SHLs.
<b>ICAO Size A</b>	Aircraft with wingspan between 0.00m - 14.99m.
<b>ICAO Size B</b>	Aircraft with wingspan between 15.00m - 23.99m.
<b>ICAO Size C</b>	Aircraft with wingspan between 24.00m - 35.99m.
<b>ICAO Size D</b>	Aircraft with wingspan between 36.00m - 51.99m.
<b>ICAO Size E</b>	Aircraft with wingspan between 52.00m - 64.99m.
<b>ICAO Size F</b>	Aircraft with wingspan between 65.00m - 80.00m.
<b>Init Coord</b>	Snapshot of schedule immediately after Initial Coordination is completed - as advised to airlines in the SALs.
<b>Passenger Air Transport Movement (PATM)</b>	Any aircraft movement which is either a scheduled or chartered passenger flight.
<b>Start</b>	Snapshot of schedule shortly before the start of the scheduling season (exact date given below where used).
<b>Time: Local</b>	Times shown are in LOCAL time for the airport/scheduling season.
<b>Time: UTC</b>	Times shown are in Universal Time Constant (UTC).

---

### Data snapshot descriptions

<b>W17 Start</b>	W17 schedule as cleared on Fri 22-Sep-17.
<b>W17 End</b>	W17 schedule as cleared on Tue 14-Mar-17.
<b>W18 Start</b>	W18 schedule as cleared on Sun 21-Oct-18.

<b>Peak Week</b>	Peak week for W17 is Mon 11-Dec-17 to Sun 17-Dec-17. Peak week for W18 is Mon 17-Dec-18 to Sun 23-Dec-18.
------------------	--

---

### **For ACL use**

	Airport-Season-Branch-Resource	From date	To date	Time
Full Season Rep 1	WAW-W17-SOS Report-Standard	Sun 29-Oct-2017	Sat 24-Mar-2018	UTC
Full Season Rep 2	WAW-W17-Live-Standard	Sun 29-Oct-2017	Sat 24-Mar-2018	UTC
Full Season Rep 3	WAW-W18-SOS Report-Standard	Sun 28-Oct-2018	Sat 30-Mar-2019	UTC
	Airport-Season-Branch-Resource	From date	To date	Time
Peak Week Rep 1	WAW-W17-SOS Report-Standard	Mon 11-Dec-2017	Sun 17-Dec-2017	UTC
Peak Week Rep 2	WAW-W17-Live-Standard	Mon 12-Mar-2018	Sun 18-Mar-2018	UTC
Peak Week Rep 3	WAW-W18-SOS Report-Standard	Mon 17-Dec-2018	Sun 23-Dec-2018	UTC