

Stansted Airport (STN)

Winter 2018/19 (W18)



Start of Season Report

Report Date: Tue 02-Oct-2018

Headlines

	W18 Start	vs. W17 Start	vs. W17 End
Total Air Transport Movements (Passenger & Freight)	73,137	▲ 1.4%	▲ 11.2%
Total Passenger Air Transport Movements	67,874	▲ 2.1%	▲ 11.9%
Total Passenger Air Transport Movement Seats	12,472,633	▲ 2.8%	▲ 13.3%
Average Seats per Passenger Air Transport Movement	184	▲ 0.7%	▲ 1.3%
Percentage of allocated slots cleared as requested (OK)	98%		

Contents

Page	Content
2	Runway Scheduling Limits
3	ATM Allocation by Operator (Full season and Peak Week Comparison)
4	Significant Route Changes
5	Full Season - ATM Analysis
6	Full Season - PATM Seats Analysis
7	Full Season - Terminal Analysis
8	Full Season - Aircraft Size Analysis
9	Full Season - Seasonality
10	Peak Week - Hourly Runway Demand
11	Peak Week - Hourly Runway Allocation
12	Peak Week - Hourly Runway Allocation Comparison (W18 Start vs. W17 Start)
13	Peak Week - Hourly Runway Allocation Comparison (W18 Start vs. W17 End)
14	Peak Week Histogram - Departure Passengers (T60) - All Terminals - All Operators
15	Peak Week Histogram - Departure Passengers (T60/15) - All Terminals - All Operators
16	Peak Week Histogram - Departure Passengers (T120/15) - All Terminals - All Operators
17	Peak Week Histogram - Arrival Passengers (T60) - 11 - All Operators
18	Peak Week Histogram - Arrival Passengers (T60/15) - 11 - All Operators
19	Glossary

W17 scheduling season runs from Sun 29-Oct-2017 to Sat 24-Mar-2018 (147 days).

W18 scheduling season runs from Sun 28-Oct-2018 to Sat 30-Mar-2019 (154 days).

W17 full season data is adjusted by a factor of 1.04762 in order to directly compare against W18 full season data.

Disclaimer

No warranty whether expressed or implied as to the completeness, accuracy, fitness for purpose, or satisfactory quality is given by ACL regarding the information in this report, which is provided by third parties. Accordingly, ACL excludes all liability with regard to such data.

The contents of this report may not be reproduced without the written consent of ACL.

Runway Scheduling Limits



Declared Hourly Movement Capacity

W17 Arrivals								Change: W17 to W18								W18 Arrivals							
Hour	Mon	Tue	Wed	Thu	Fri	Sat	Sun	Hour	Mon	Tue	Wed	Thu	Fri	Sat	Sun	Hour	Mon	Tue	Wed	Thu	Fri	Sat	Sun
UTC	1	2	3	4	5	6	7	UTC	1	2	3	4	5	6	7	UTC	1	2	3	4	5	6	7
00	24	24	24	24	24	24	24	00								00	24	24	24	24	24	24	24
01	24	24	24	24	24	24	24	01								01	24	24	24	24	24	24	24
02	24	24	24	24	24	24	24	02								02	24	24	24	24	24	24	24
03	24	24	24	24	24	24	24	03								03	24	24	24	24	24	24	24
04	24	24	24	24	24	24	24	04								04	24	24	24	24	24	24	24
05	24	24	24	24	24	24	24	05								05	24	24	24	24	24	24	24
06	24	24	24	24	24	24	24	06								06	24	24	24	24	24	24	24
07	28	28	28	28	28	28	28	07								07	28	28	28	28	28	28	28
08	27	27	27	27	27	27	27	08								08	27	27	27	27	27	27	27
09	24	24	24	24	24	24	24	09	3	3	3	3	3	3	3	09	27	27	27	27	27	27	27
10	25	25	25	25	25	25	25	10	2	2	2	2	2	2	2	10	27	27	27	27	27	27	27
11	28	28	28	28	28	28	28	11								11	28	28	28	28	28	28	28
12	28	28	28	28	28	28	28	12								12	28	28	28	28	28	28	28
13	24	24	24	24	24	24	24	13	3	3	3	3	3	3	3	13	27	27	27	27	27	27	27
14	24	24	24	24	24	24	24	14	3	3	3	3	3	3	3	14	27	27	27	27	27	27	27
15	28	28	28	28	28	28	28	15								15	28	28	28	28	28	28	28
16	28	28	28	28	28	28	28	16								16	28	28	28	28	28	28	28
17	28	28	28	28	28	28	28	17								17	28	28	28	28	28	28	28
18	28	28	28	28	28	28	28	18								18	28	28	28	28	28	28	28
19	28	28	28	28	28	28	28	19								19	28	28	28	28	28	28	28
20	24	24	24	24	24	24	24	20	3	3	3	3	3	3	3	20	27	27	27	27	27	27	27
21	27	27	27	27	27	27	27	21								21	27	27	27	27	27	27	27
22	24	24	24	24	24	24	24	22								22	24	24	24	24	24	24	24
23	24	24	24	24	24	24	24	23								23	24	24	24	24	24	24	24

W17 Departures								Change: W17 to W18								W18 Departures							
Hour	Mon	Tue	Wed	Thu	Fri	Sat	Sun	Hour	Mon	Tue	Wed	Thu	Fri	Sat	Sun	Hour	Mon	Tue	Wed	Thu	Fri	Sat	Sun
UTC	1	2	3	4	5	6	7	UTC	1	2	3	4	5	6	7	UTC	1	2	3	4	5	6	7
00	24	24	24	24	24	24	24	00								00	24	24	24	24	24	24	24
01	24	24	24	24	24	24	24	01								01	24	24	24	24	24	24	24
02	24	24	24	24	24	24	24	02								02	24	24	24	24	24	24	24
03	24	24	24	24	24	24	24	03								03	24	24	24	24	24	24	24
04	24	24	24	24	24	24	24	04								04	24	24	24	24	24	24	24
05	24	24	24	24	24	24	24	05								05	24	24	24	24	24	24	24
06	33	33	33	33	33	33	33	06								06	33	33	33	33	33	33	33
07	33	33	33	33	33	33	33	07								07	33	33	33	33	33	33	33
08	27	27	27	27	27	27	27	08								08	27	27	27	27	27	27	27
09	24	24	24	24	24	24	24	09	3	3	3	3	3	3	3	09	27	27	27	27	27	27	27
10	25	25	25	25	25	25	25	10	2	2	2	2	2	2	2	10	27	27	27	27	27	27	27
11	28	28	28	28	28	28	28	11								11	28	28	28	28	28	28	28
12	28	28	28	28	28	28	28	12								12	28	28	28	28	28	28	28
13	24	24	24	24	24	24	24	13	3	3	3	3	3	3	3	13	27	27	27	27	27	27	27
14	24	24	24	24	24	24	24	14	3	3	3	3	3	3	3	14	27	27	27	27	27	27	27
15	28	28	28	28	28	28	28	15								15	28	28	28	28	28	28	28
16	28	28	28	28	28	28	28	16								16	28	28	28	28	28	28	28
17	28	28	28	28	28	28	28	17								17	28	28	28	28	28	28	28
18	28	28	28	28	28	28	28	18								18	28	28	28	28	28	28	28
19	28	28	28	28	28	28	28	19								19	28	28	28	28	28	28	28
20	24	24	24	24	24	24	24	20	3	3	3	3	3	3	3	20	27	27	27	27	27	27	27
21	27	27	27	27	27	27	27	21								21	27	27	27	27	27	27	27
22	31	31	31	31	31	31	31	22	-7	-7	-7	-7	-7	-7	-7	22	24	24	24	24	24	24	24
23	27	27	27	27	27	27	27	23	-3	-3	-3	-3	-3	-3	-3	23	24	24	24	24	24	24	24

W17 Totals								Change: W17 to W18								W18 Totals							
Hour	Mon	Tue	Wed	Thu	Fri	Sat	Sun	Hour	Mon	Tue	Wed	Thu	Fri	Sat	Sun	Hour	Mon	Tue	Wed	Thu	Fri	Sat	Sun
UTC	1	2	3	4	5	6	7	UTC	1	2	3	4	5	6	7	UTC	1	2	3	4	5	6	7
00	36	36	36	36	36	36	36	00								00	36	36	36	36	36	36	36
01	36	36	36	36	36	36	36	01								01	36	36	36	36	36	36	36
02	36	36	36	36	36	36	36	02								02	36	36	36	36	36	36	36
03	36	36	36	36	36	36	36	03								03	36	36	36	36	36	36	36
04	36	36	36	36	36	36	36	04								04	36	36	36	36	36	36	36
05	36	36	36	36	36	36	36	05								05	36	36	36	36	36	36	36
06	44	44	44	44	44	44	44	06								06	44	44	44	44	44	44	44
07	48	48	48	48	48	48	48	07								07	48	48	48	48	48	48	48
08	44	44	44	44	44	44	44	08	2	2	2	2	2	2	2	08	46	46	46	46	46	46	46
09	38	38	38	38	38	38	38	09	4	4	4	4	4	4	4	09	42	42	42	42	42	42	42
10	40	40	40	40	40	40	40	10	2	2	2	2	2	2	2	10	42	42	42	42	42	42	42
11	50	50	50	50	50	50	50	11								11	50	50	50	50	50	50	50
12	44	44	44	44	44	44	44	12								12	44	44	44	44	44	44	44
13	38	38	38	38	38	38	38	13	4	4	4	4	4	4	4	13	42	42	42	42	42	42	42
14	38	38	38	38	38	38	38	14	4	4	4	4	4	4	4	14	42	42	42	42	42	42	42
15	44	44	44	44	44	44	44	15								15	44	44	44	44	44	44	44
16	42	42	42	42	42	42	42	16								16	42	42	42	42	42	42	42
17	44	44	44	44	44	44	44	17								17	44	44	44	44	44	44	44
18	50	50	50	50	50	50	50	18								18	50	50	50	50	50	50	50
19	48	48	48	48	48	48	48	19								19	48	48	48	48	48	48	48
20	38	38	38	38	38	38	38	20	4	4	4	4	4	4	4	20	42	42	42	42	42	42	42
21	38	38	38	38	38	38	38	21	4	4	4	4	4	4	4	21	42	42	42	42	42	42	42
22	39	39	39	39	39	39	39	22	3	3	3	3	3	3	3	22	42						

Air Transport Movement Allocation by Operator

Comparison between W17 End vs. W18 Start



Operator	FULL SEASON ALLOCATION								PEAK WEEK ALLOCATION							
	W17 ATMs	W18 ATMs	+/- change	W18 Rank	W17 Seats	W18 Seats	+/- change	W18 Rank	W17 ATMs	W18 ATMs	+/- change	W18 Rank	W17 Seats	W18 Seats	+/- change	W18 Rank
Aeroneus	7	-	-7	49	704	-	-704	35	-	-	0	36	-	-	0	22
Air Atlanta Icelandic	2	-	-2	49	-	-	0	35	1	-	-1	36	-	-	0	22
Air Cargo Global	3	-	-3	49	-	-	0	35	-	-	0	36	-	-	0	22
Air Corsica	-	12	12	39	-	2,160	2,160	25	-	-	0	36	-	-	0	22
Air Mediterranee	140	-	-140	49	22,742	-	-22,742	35	8	-	-8	36	1,296	-	-1,296	22
Air Moldova	180	220	40	18	30,712	39,600	8,888	11	10	10	0	18	1,800	1,800	0	11
Air X	1	-	-1	49	132	-	-132	35	-	-	0	36	-	-	0	22
AirBridgeCargo	13	-	-13	49	-	-	0	35	-	-	0	36	-	-	0	22
AlbaStar	3	-	-3	49	594	-	-594	35	-	-	0	36	-	-	0	22
Albawings	-	-	0	49	-	-	0	35	-	-	0	36	-	-	0	22
Alitalia	4	-	-4	49	419	-	-419	35	-	-	0	36	-	-	0	22
Allied Air	73	-	-73	49	-	-	0	35	6	-	-6	36	-	-	0	22
Antonov Airlines	5	-	-5	49	-	-	0	35	5	-	-5	36	-	-	0	22
Arkefly	-	-	0	49	-	-	0	35	-	-	0	36	-	-	0	22
Arkia	5	108	103	28	1,388	23,264	21,876	14	-	6	6	25	-	1,320	1,320	14
Asiana Airlines	119	88	-31	31	-	-	0	35	4	4	0	31	-	-	0	22
ASL Airlines Belgium	145	176	31	21	-	-	0	35	8	8	0	20	-	-	0	22
ASL Airlines France	5	-	-5	49	154	-	-154	35	2	-	-2	36	-	-	0	22
ASL Airlines Hungary	4	-	-4	49	-	-	0	35	-	-	0	36	-	-	0	22
ASL Airlines Ireland	2	-	-2	49	310	-	-310	35	-	-	0	36	-	-	0	22
Astral Aviation	69	-	-69	49	-	-	0	35	5	-	-5	36	-	-	0	22
Atlas Air	104	88	-16	31	-	-	0	35	6	4	-2	31	-	-	0	22
AtlasGlobal	312	308	-4	16	54,049	62,832	8,783	10	14	14	0	16	2,856	2,856	0	9
Aurigny Air Services	182	180	-2	20	13,074	12,960	-114	19	10	8	-2	20	720	576	-144	20
Austrian Airlines	25	24	-1	37	3,621	3,568	-53	23	-	-	0	36	-	-	0	22
Blue Islands	2	-	-2	49	101	-	-101	35	-	-	0	36	-	-	0	22
Bluebird Cargo	27	-	-27	49	-	-	0	35	2	-	-2	36	-	-	0	22
bmi regional	552	568	16	11	27,149	27,832	683	13	26	26	0	12	1,274	1,274	0	15
British Airways	220	107	-113	30	21,530	10,398	-11,132	20	10	6	-4	25	980	588	-392	19
Cargo Air	25	-	-25	49	-	-	0	35	3	-	-3	36	-	-	0	22
CargoLogicAir	122	88	-34	31	-	-	0	35	3	4	1	31	-	-	0	22
Cargolux	101	132	31	26	-	-	0	35	4	6	2	25	-	-	0	22
Cello Aviation	1	6	5	41	48	888	840	29	-	-	0	36	-	-	0	22
China Southern	124	174	50	24	-	-	0	35	6	8	2	20	-	-	0	22
Cityjet	2	-	-2	49	199	-	-199	35	2	-	-2	36	190	-	-190	22
Cobalt Air	228	108	-120	28	32,987	15,552	-17,435	16	10	4	-6	31	1,440	576	-864	20
Corendon Airlines Europe	-	8	8	40	-	1,512	1,512	26	-	-	0	36	-	-	0	22
Corendon Dutch Airlines	23	-	-23	49	4,356	-	-4,356	35	-	-	0	36	-	-	0	22
Croatia Airlines	-	2	2	46	-	348	348	32	-	-	0	36	-	-	0	22
DHL Air	13	-	-13	49	-	-	0	35	8	-	-8	36	-	-	0	22
Dubai Air Wing	5	-	-5	49	-	-	0	35	-	-	0	36	-	-	0	22
Easyjet	7,330	7,327	-3	2	1,183,917	1,191,042	7,125	2	380	378	-2	2	61,320	61,386	66	2
Emirates	2	308	306	16	-	109,032	109,032	8	-	14	14	16	-	4,956	4,956	8
Enter Air	22	13	-9	38	4,158	2,457	-1,701	24	5	5	0	30	945	945	0	16
Ethiad Airways	130	158	28	25	-	-	0	35	7	6	-1	25	-	-	0	22
European Air Transport (DHL)	256	484	228	13	-	-	0	35	-	22	22	13	-	-	0	22
Eurowings	2,112	1,308	-804	5	347,763	235,704	-112,059	4	100	60	-40	5	15,840	10,812	-5,028	4
Federal Express	1,686	1,804	118	4	-	-	0	35	79	82	3	4	-	-	0	22
Fly Ernest	2	-	-2	49	377	-	-377	35	-	-	0	36	-	-	0	22
Germania	5	-	-5	49	786	-	-786	35	-	-	0	36	-	-	0	22
Germania Flug AG	1	-	-1	49	157	-	-157	35	-	-	0	36	-	-	0	22
Inflite	2	-	-2	49	12	-	-12	35	-	-	0	36	-	-	0	22
Jet2.com	1,809	2,188	379	3	343,947	413,921	69,974	3	75	120	45	3	14,175	22,680	8,505	3
Jota Aviation	2	-	-2	49	199	-	-199	35	-	-	0	36	-	-	0	22
Lauda Motion	-	642	642	8	-	122,180	122,180	7	-	30	30	8	-	5,700	5,700	7
Loganair	465	468	3	14	16,070	15,444	-626	17	22	22	0	13	658	726	68	17
Lufthansa	9	6	-3	41	1,456	1,170	-286	27	-	-	0	36	-	-	0	22
Luxair	4	-	-4	49	779	-	-779	35	-	-	0	36	-	-	0	22
Maleth-Aero	6	-	-6	49	600	-	-600	35	-	-	0	36	-	-	0	22
Martinair	40	44	4	35	-	-	0	35	-	2	2	35	-	-	0	22
MNG Airlines	25	-	-25	49	-	-	0	35	-	-	0	36	-	-	0	22
Norwegian	1	-	-1	49	360	-	-360	35	-	-	0	36	-	-	0	22
Pegasus Airlines	1,041	1,057	16	6	196,812	199,773	2,961	5	48	48	0	6	9,072	9,072	0	5
Peoples Viennaline	-	48	48	34	-	3,648	3,648	22	-	-	0	36	-	-	0	22
Pobeda Airlines LLC	-	176	176	21	-	33,264	33,264	12	-	8	8	20	-	1,512	1,512	12
Primera Air	-	685	685	7	-	134,532	134,532	6	-	35	35	7	-	6,867	6,867	6
Qatar Airways	207	220	13	18	-	1,080	1,080	28	10	10	0	18	-	-	0	22
Royal Jordanian	-	4	4	44	-	1,080	1,080	28	-	-	0	36	-	-	0	22
Ryanair	45,351	51,305	5,954	11	8,571,334	9,696,645	1,125,311	11	2,148	2,456	308	1	405,972	464,184	58,212	1
Safari Express Cargo	29	-	-29	49	-	-	0	35	1	-	-1	36	-	-	0	22
Saudia	40	-	-40	49	-	-	0	35	1	-	-1	36	-	-	0	22
Silk Way West Airlines	34	-	-34	49	-	-	0	35	1	-	-1	36	-	-	0	22
Sky Taxi	8	-	-8	49	-	-	0	35	1	-	-1	36	-	-	0	22
Small Planet Airlines	21	-	-21	49	4,274	-	-4,274	35	8	-	-8	36	1,600	-	-1,600	22
SmartLynx Airlines	2	-	-2	49	377	-	-377	35	-	-	0	36	-	-	0	22
SmartLynx Airlines Estonia	1	-	-1	49	230	-	-230	35	-	-	0	36	-	-	0	22
SprintAir	25	-	-25	49	-	-	0	35	5	-	-5	36	-	-	0	22
Star Air	78	-	-78	49	-	-	0	35	8	-	-8	36	-	-	0	22
Sundair	1	1	0	48	-	180	180	34	-	-	0	36	-	-	0	22
Thomas Cook (UK)	118	29	-89	36	26,044	5,040	-20,104	21	10	-	-10	36	2,200	-	-2,200	22
Titan Airways	430	534	104	12	19,386	20,388	1,002	15	20	27	7	11	1,030	1,348	318	13
Trade Air	-	2	2	46	-	218	218	33	-	-	0	36	-	-	0	22
Transavia	13	3	-10	45	2,292	527	-1,765	31	2	-	-2	36	298	-	-298	22
Travel Service	2	-	-2	49	396	-	-396	35	-	-	0	36	-	-	0	22
TUI Airways	352	368	16	15	67,060	69,996	2,936	8	20	15	-5	15	3,844	2,835	-1,009	10
Turkish Airlines	132	132	0	26	-	-	0	35	-	6	6	25	-	-	0	22
Ukraine Air Alliance	5	-	-5	49	-	-	0	35	-	-	0	36	-	-	0	22
UPS Airlines	599	614	15	10	-	-	0	35	27	28	1	10	-	-	0	22
Volga-Dnepr Airlines	2	-	-2	49	-	-	0	35	-	-	0	36	-	-	0	22
Voltea Airlines	-	6	6	41	-	850	850	30	-	-	0	36	-	-	0	22
Vueling	4	-	-4	49	754	-	-754	35	-	-	0	36	-	-	0	22
West Atlantic Cargo	653	630	-23	9	-	-	0	35	30	30	0	8	-	-	0	22
Western Global Airlines	4	-	-4	49	-	-	0	35	-	-	0	36	-	-	0	22
Wideroe	-	176	176	21	-	13,728	13,728	18	-	8	8	20	-	624	624	18
TOTAL	65,781	73,137	7,356		11,003,812	12,472,633	1,468,821		3,160	3,520	360		527,510	602,637	75,127	

Operators with '0' ATMs in both W17 End & W18 Start schedules are included in the table due to appearing in the W17 Start schedule (either with/without allocated slots).

Significant Route Changes

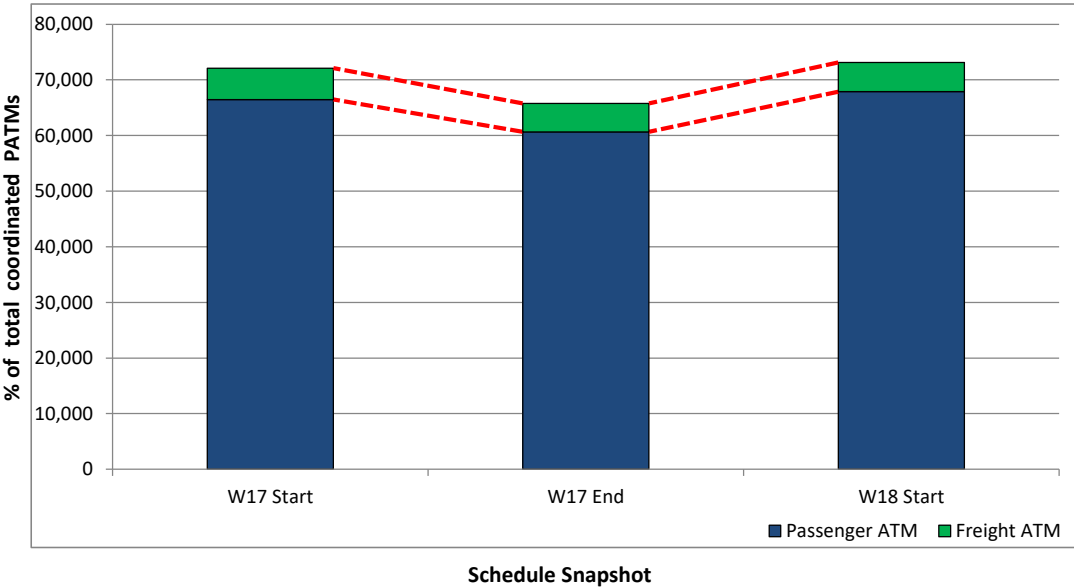


Operator	Category	Description of change from W17 schedule to W18 schedule
Air Mediterranean	CANCELLED	Athens 4 x weekly
Air Moldova	CHANGE	Chisinau 4 to 5 x weekly
Arkia	NEW	Route to Tel Aviv
British Airways	CANCELLED	Cancelled route Linate
Cobalt Air	CHANGE	Larnaca 5 to 3 x weekly
Emirates	NEW	New route to Dubai daily
Eurowings	CANCELLED	Stuttgart and Vienna
Lauda Motion	NEW	Routes to Innsbruck and Vienna
Pobeda Airlines LLC	NEW	New route to St Petersburg 4 x weekly
Primera Air	NEW	Routes to New York, Washington, Las Palmas, Tenerife and Toronto
Ryanair	NEW	Routes to Edinburgh, Nimes, Kiev, Lviv, Nantes
Ryanair	CANCELLED	Routes to Basel, Oradea, Timisoara
Wideroe	NEW	Routes to Kristiansand 4 x weekly

Full Season - ATM Analysis



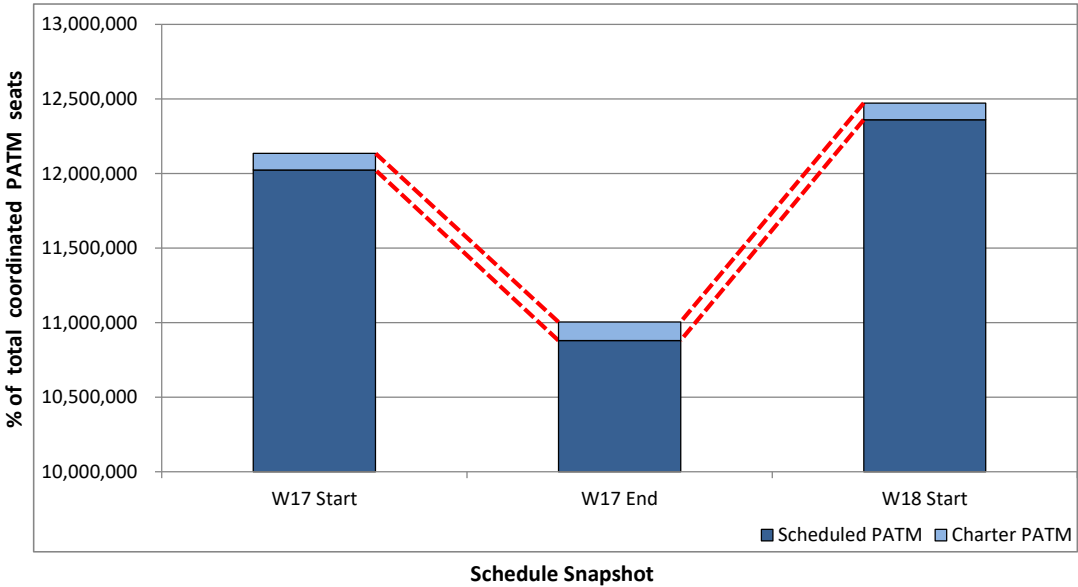
Total ATMs: Passenger ATMs vs. Freight ATMs



Full Season - PATM Seats Analysis



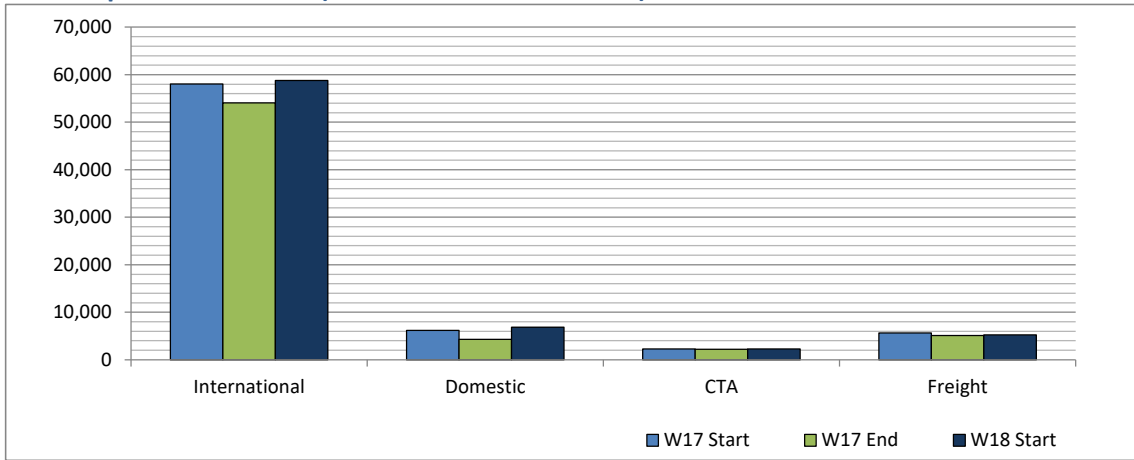
Total Passenger ATM seats: Scheduled vs. Charter



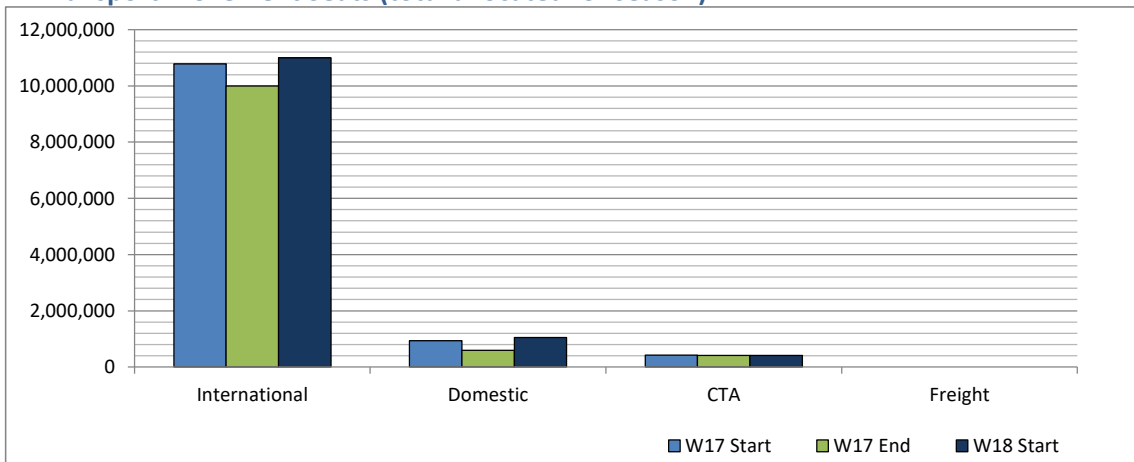
Full Season - Terminal Analysis



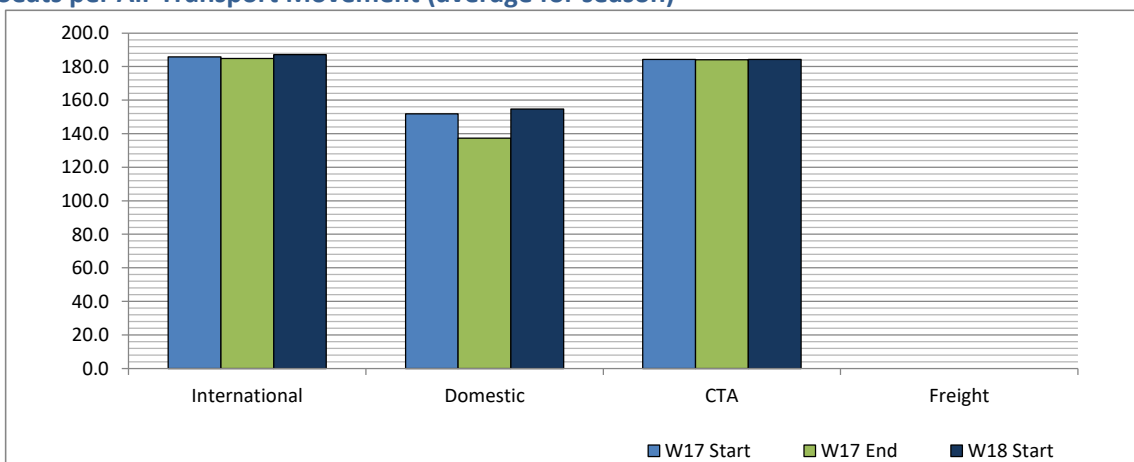
Air Transport Movements (total allocated for season)



Air Transport Movement Seats (total allocated for season)



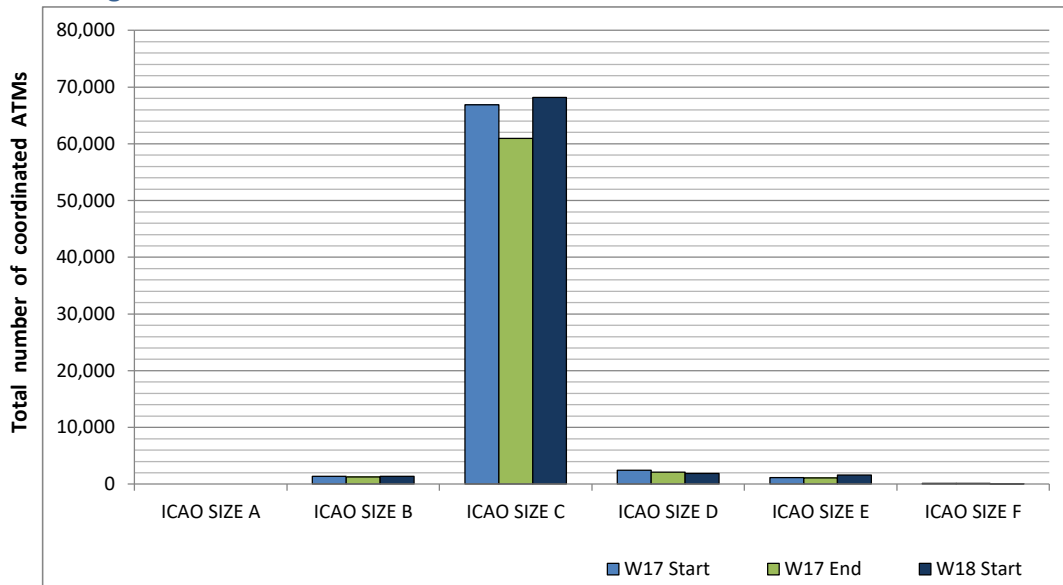
Seats per Air Transport Movement (average for season)



Full Season - Aircraft Size Analysis

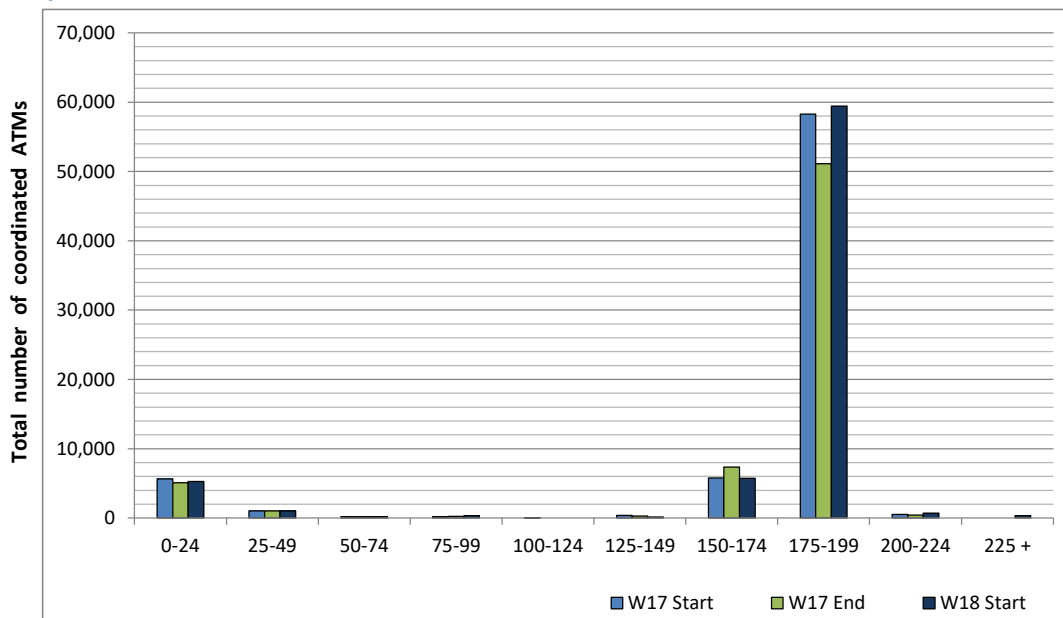


ICAO size designation



Note: See Glossary for definitions of ICAO SIZE groupings

Air Transport Movement seat distribution

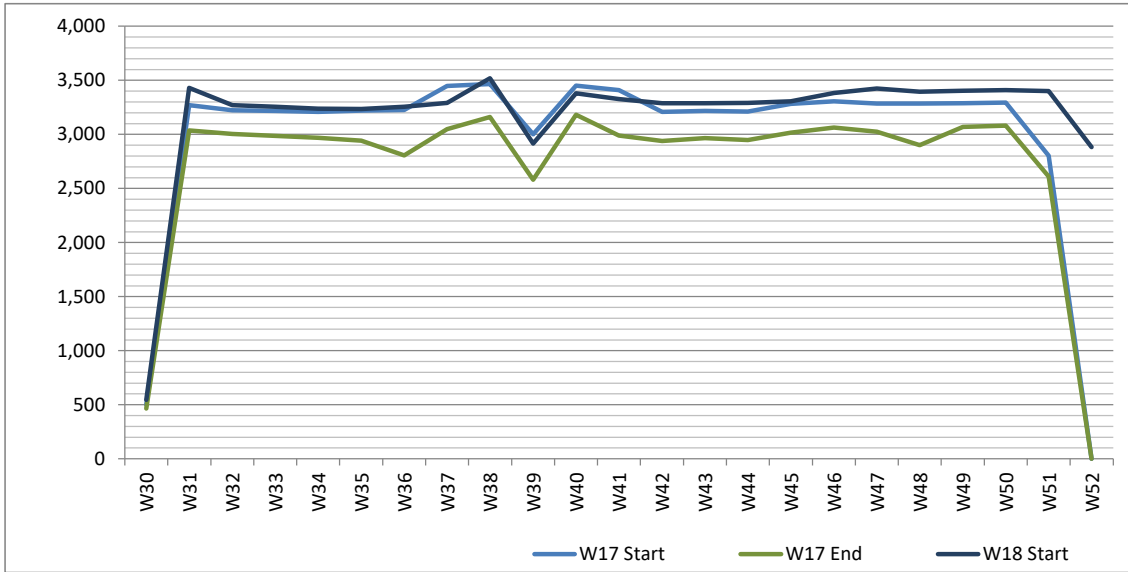


Note: FREIGHT-ONLY services with 0 seats are included in the first seat band '0-24'

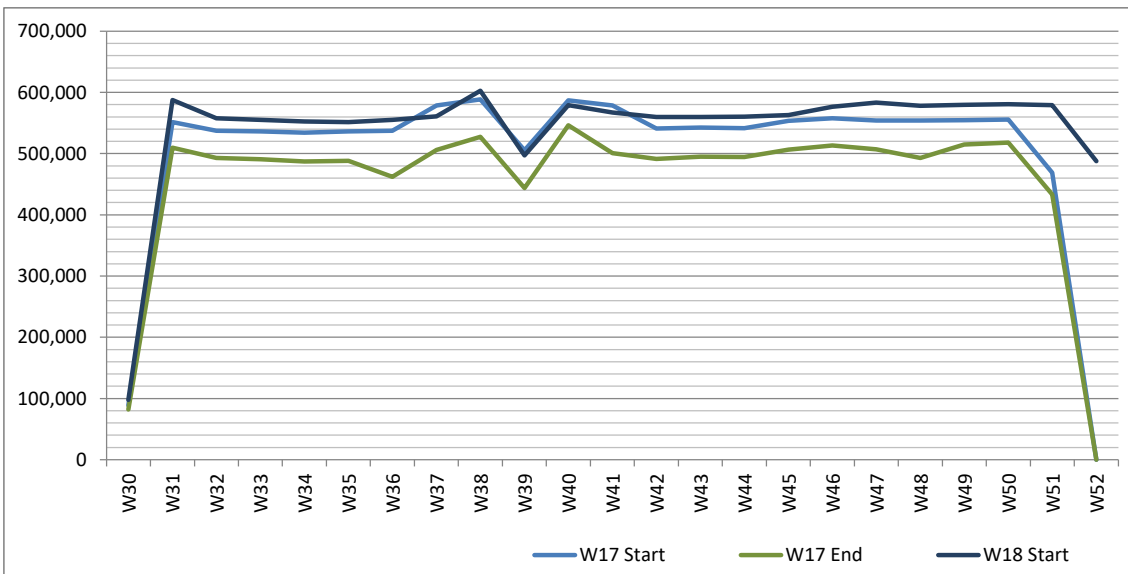
Full Season - Seasonality



Air Transport Movements by week of season



Air Transport Movement Seats by week of season



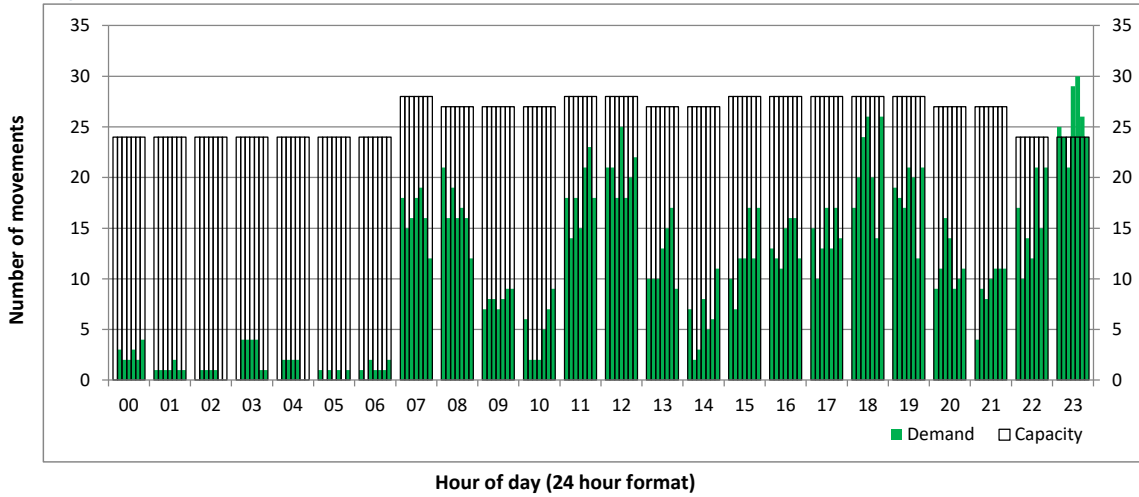
Peak Week - Hourly Runway Demand

Schedule: W18 Start



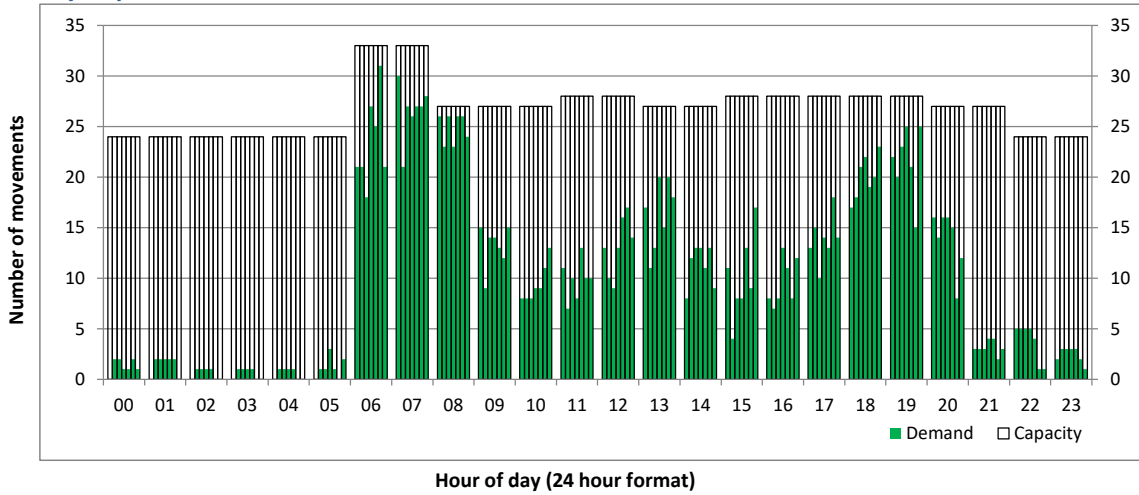
Hourly Arrival Demand

Time: UTC



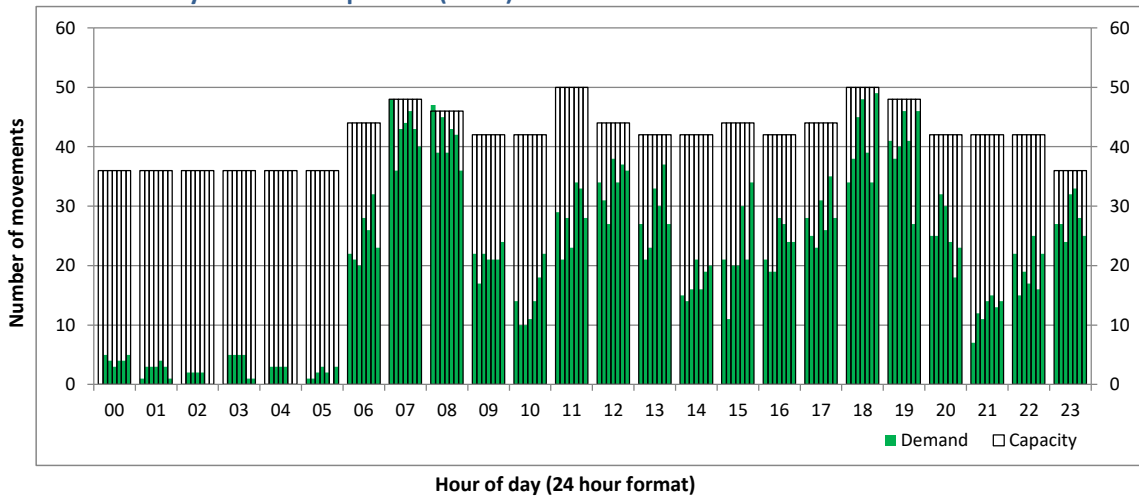
Hourly Departure Demand

Time: UTC



Combined Hourly Arrival & Departure (Total) Demand

Time: UTC



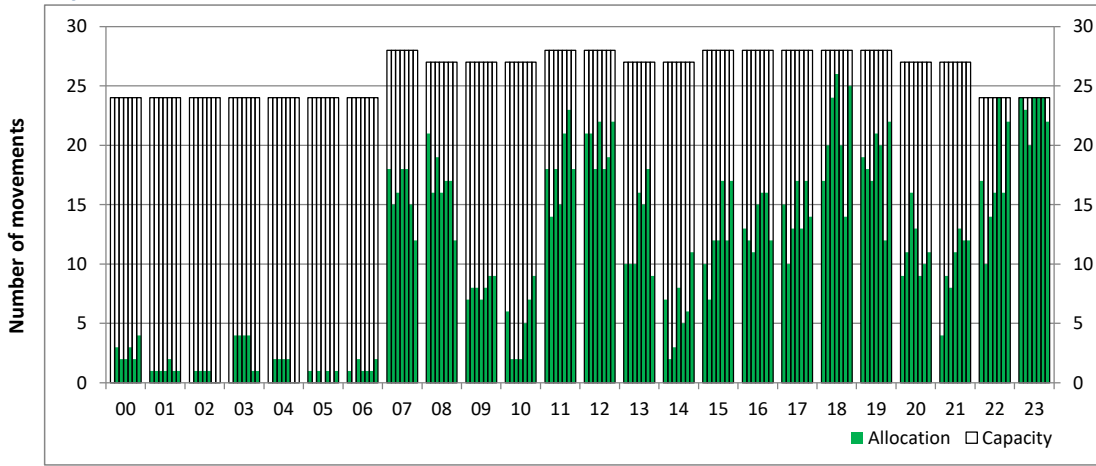
Peak Week - Hourly Runway Allocation

Schedule: W18 Start



Hourly Arrival Allocation

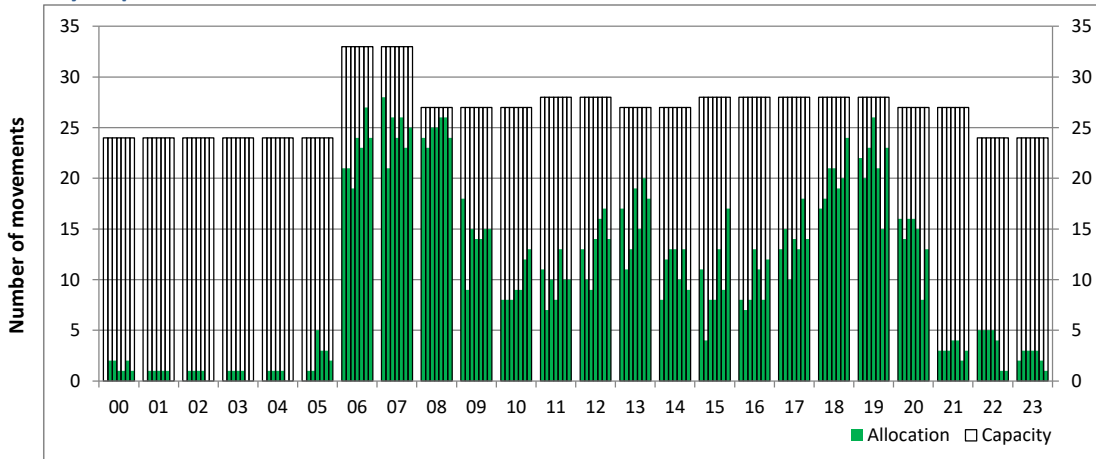
Time: UTC



Hour of day (24 hour format)

Hourly Departure Allocation

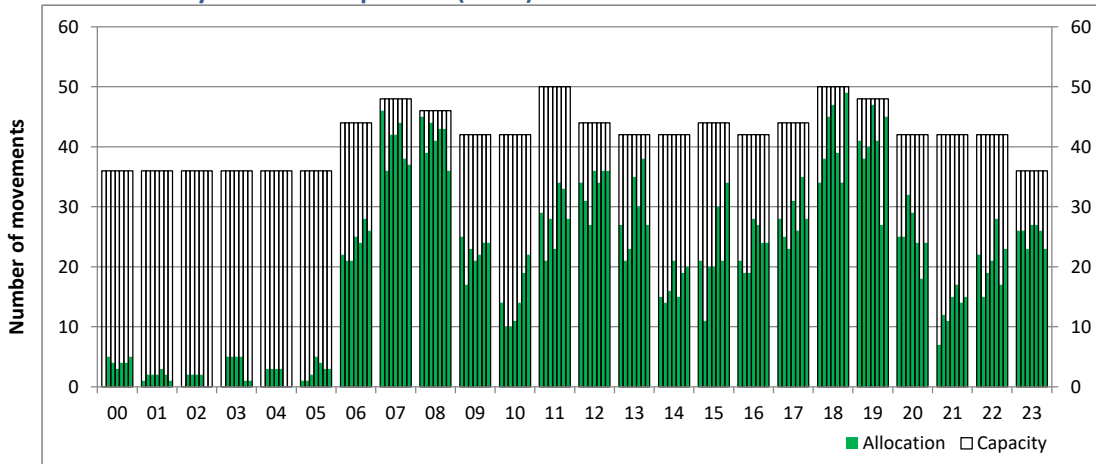
Time: UTC



Hour of day (24 hour format)

Combined Hourly Arrival & Departure (Total) Allocation

Time: UTC



Hour of day (24 hour format)

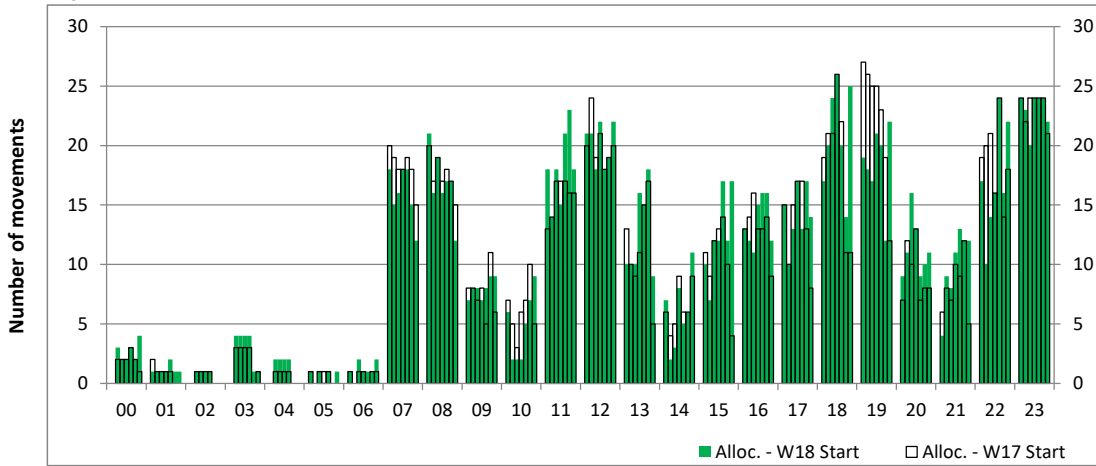
Peak Week - Runway Allocation Comparison

Comparison of W18 Start vs. W17 Start



Hourly Arrival Allocation

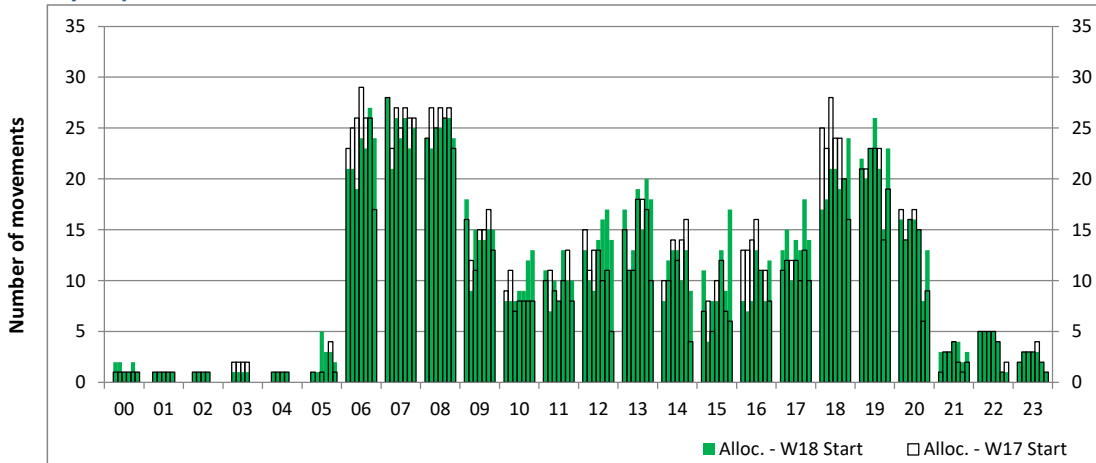
Time: UTC



Hour of day (24 hour format)

Hourly Departure Allocation

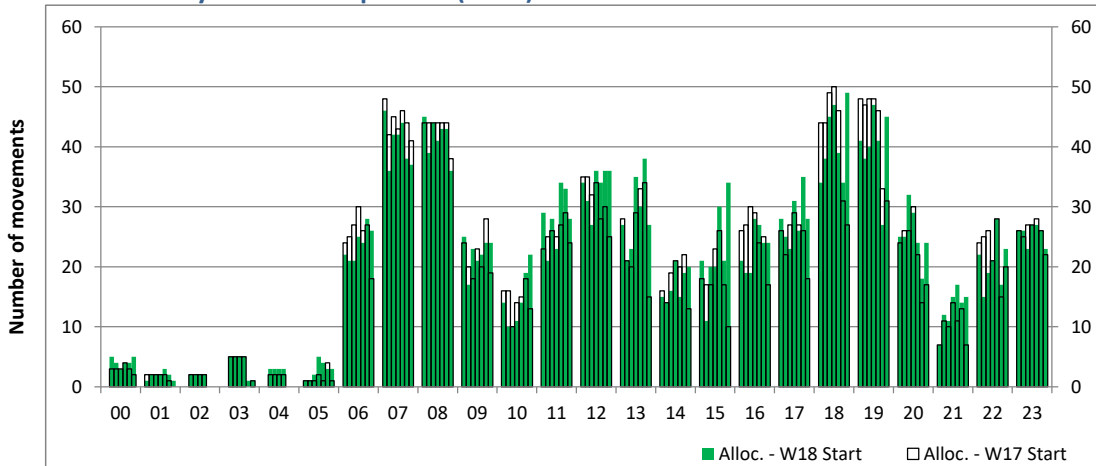
Time: UTC



Hour of day (24 hour format)

Combined Hourly Arrival & Departure (Total) Allocation

Time: UTC



Hour of day (24 hour format)

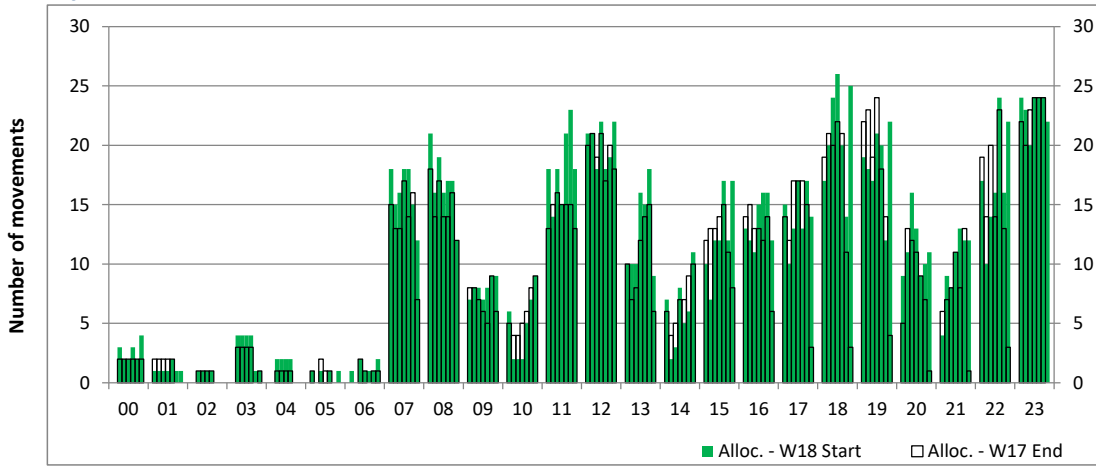
Peak Week - Runway Allocation Comparison

Comparison of W18 Start vs. W17 End



Hourly Arrival Allocation

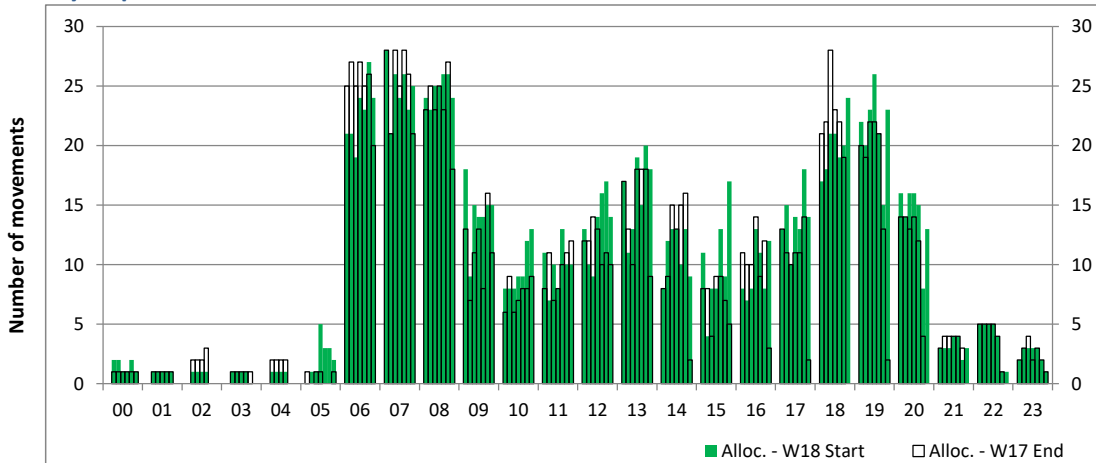
Time: UTC



Hour of day (24 hour format)

Hourly Departure Allocation

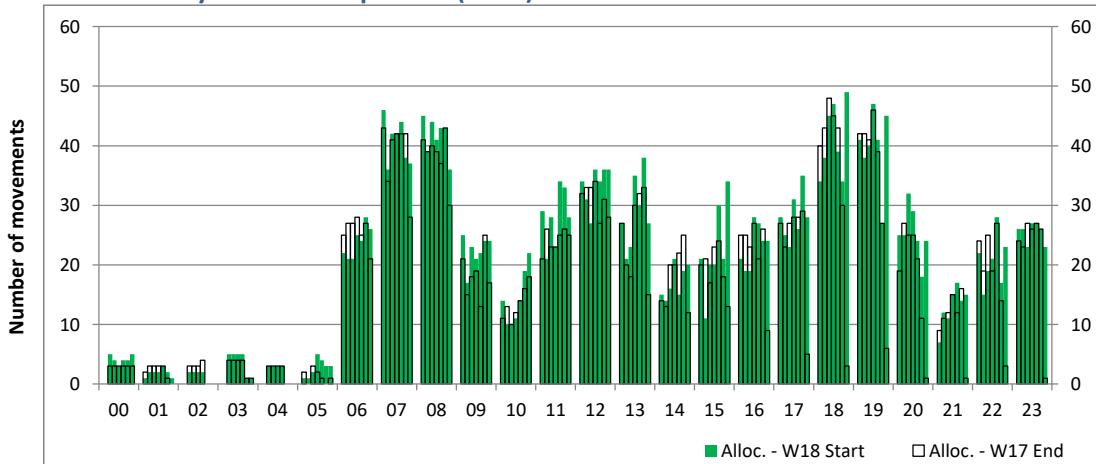
Time: UTC



Hour of day (24 hour format)

Combined Hourly Arrival & Departure (Total) Allocation

Time: UTC



Hour of day (24 hour format)

Peak Week - Passengers Histogram

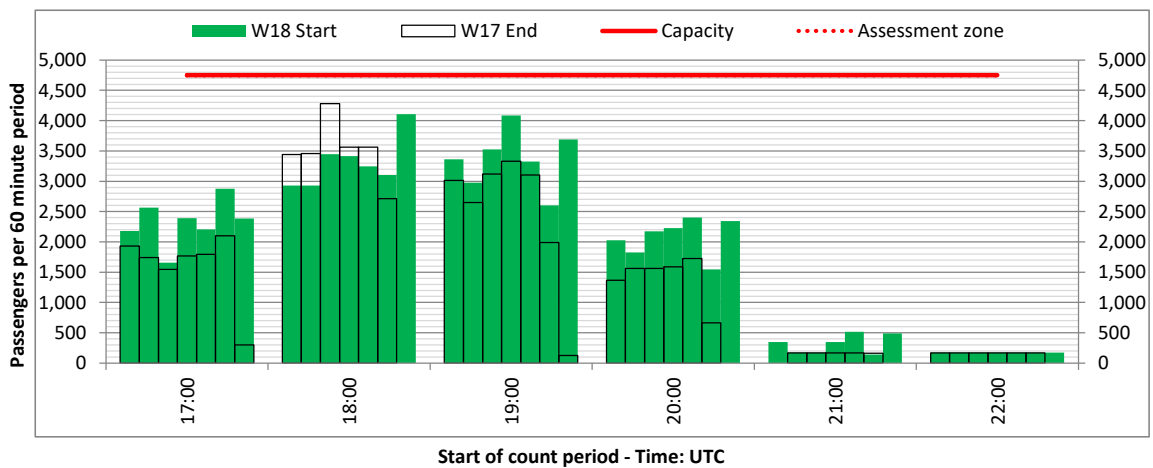
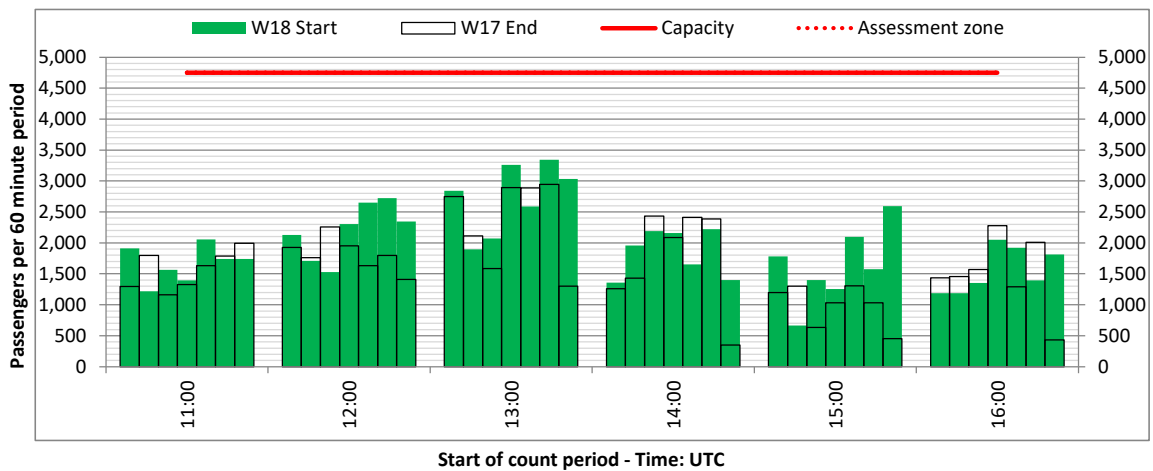
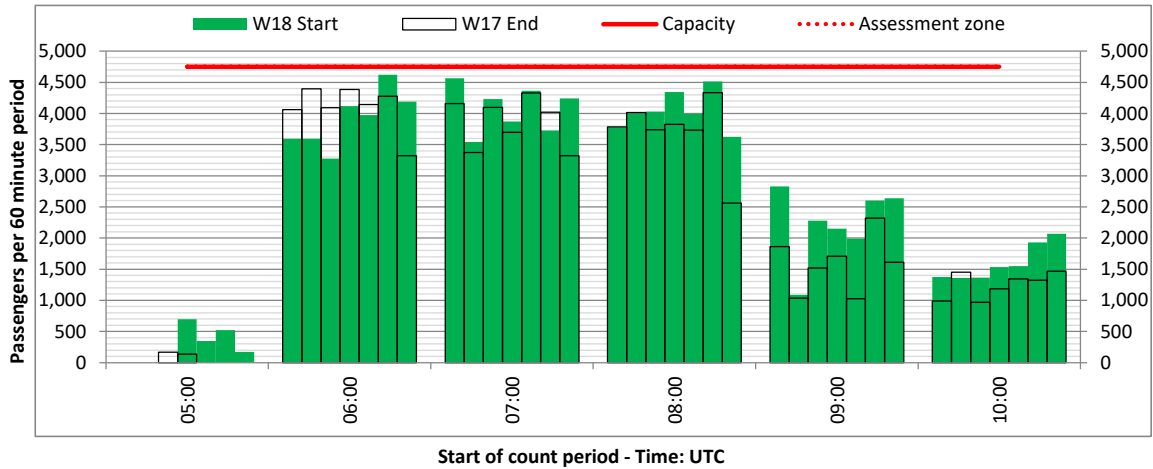
DEPARTURE - 60 minute count rolling every 60 mins (T60)



Terminals: All Terminals

Operators: All Operators

Days: 1234567



Peak Week - Passengers Histogram

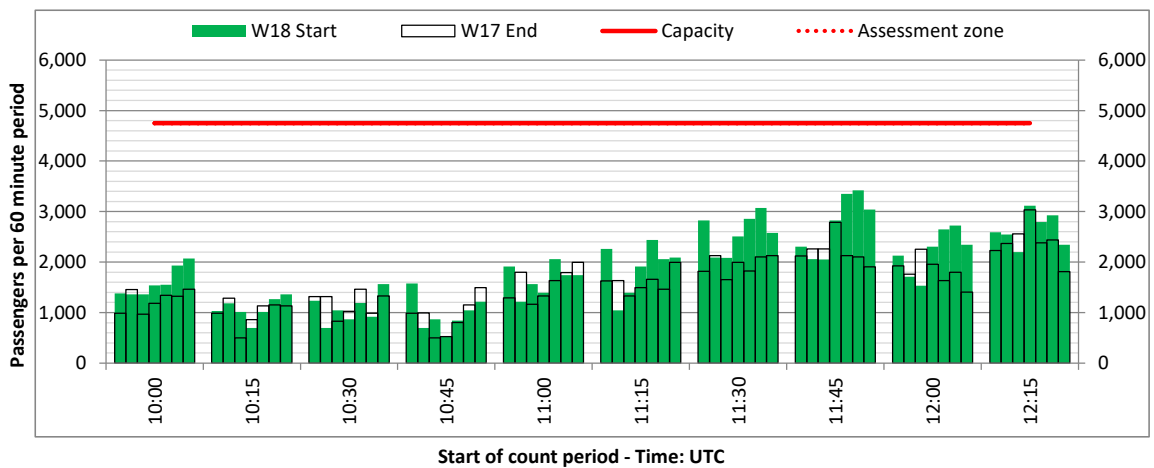
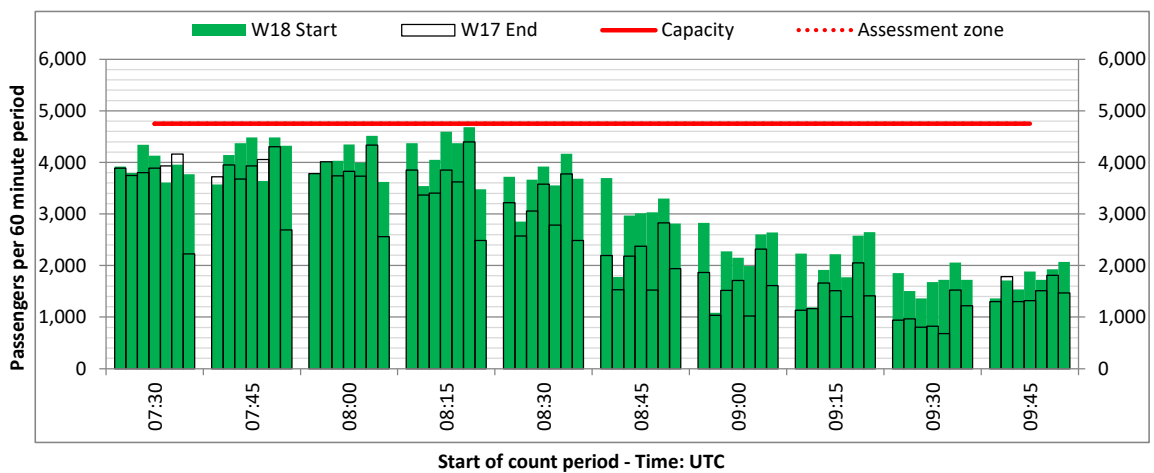
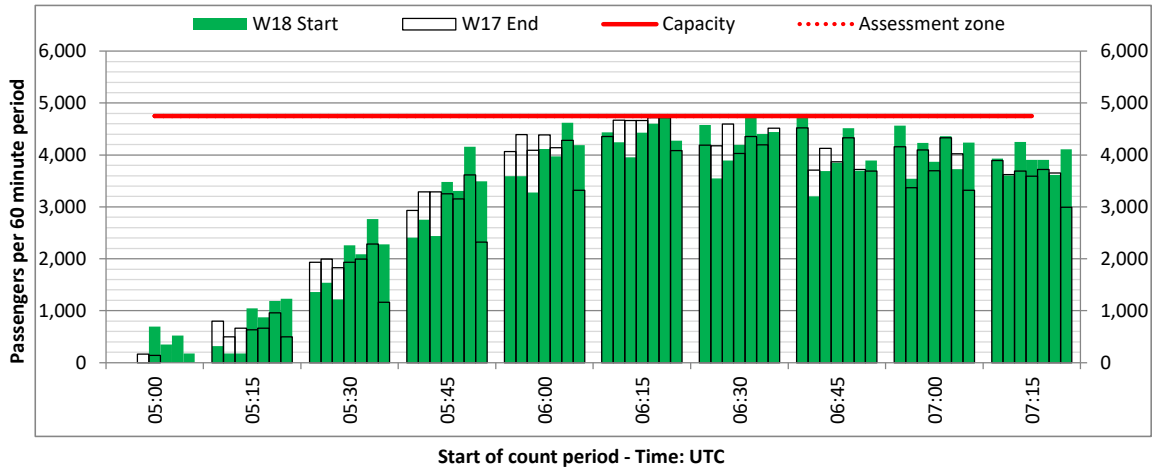
DEPARTURE - 60 minute count rolling every 15 mins (T60/15)



Terminals: All Terminals

Operators: All Operators

Days: 1234567



Peak Week - Passengers Histogram

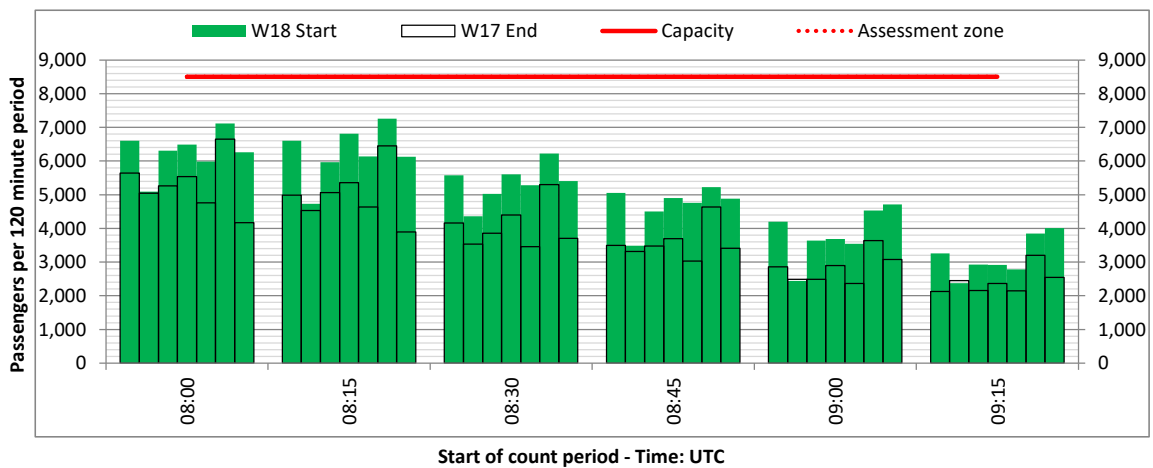
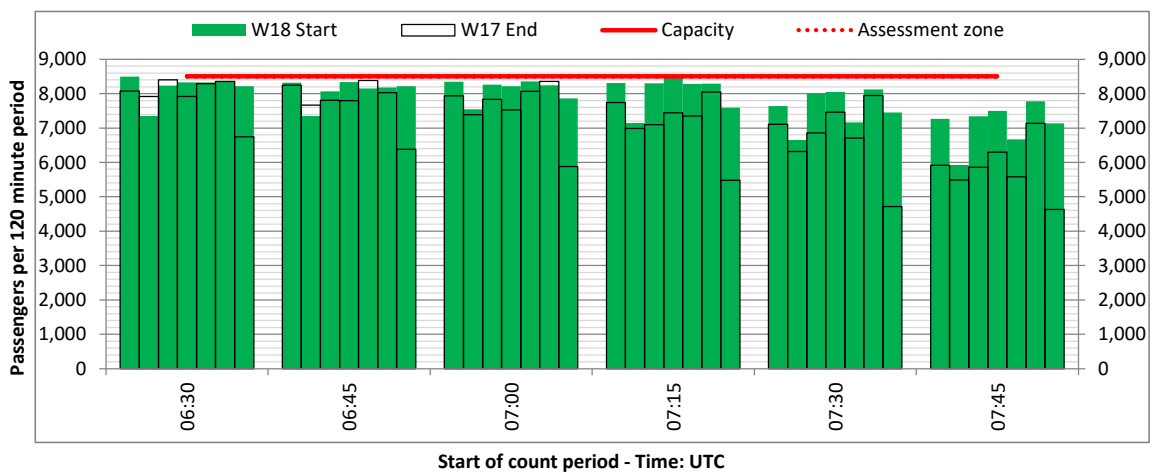
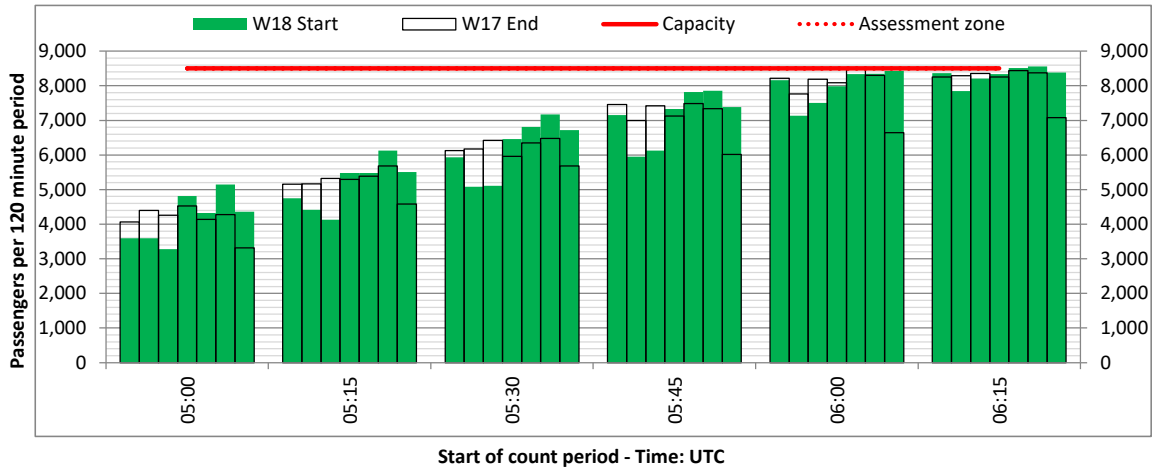
DEPARTURE - 120 minute count rolling every 15 mins (T120/15)



Terminals: All Terminals

Operators: All Operators

Days: 1234567



Peak Week - Passengers Histogram

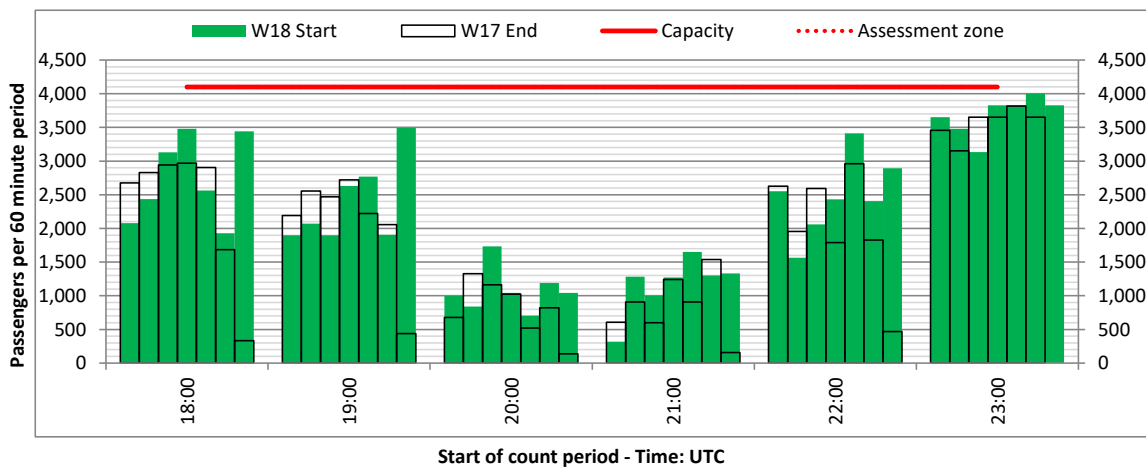
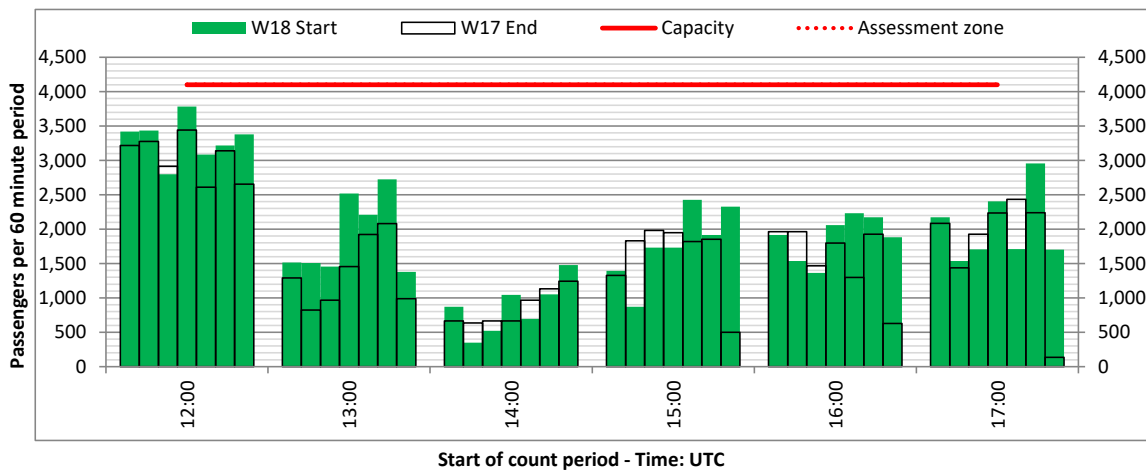
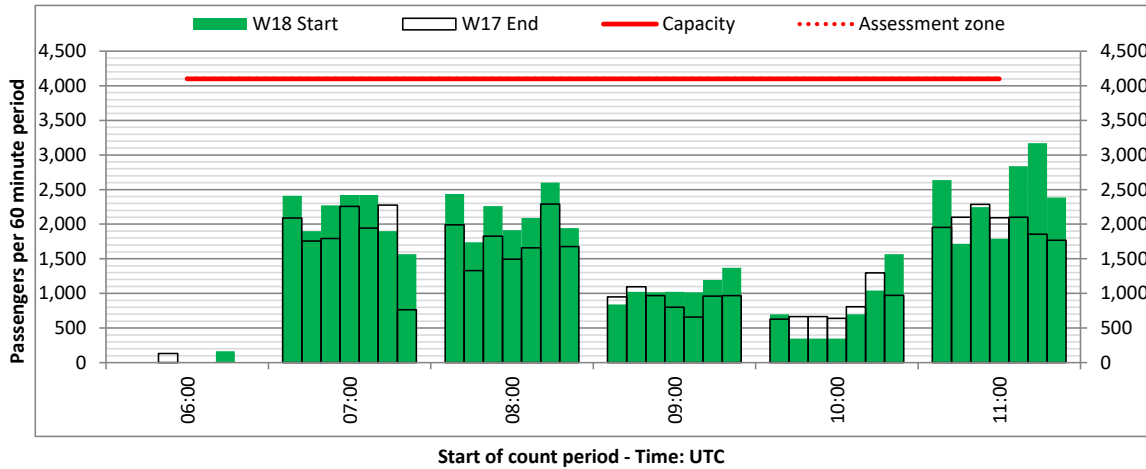
ARRIVAL - 60 minute count rolling every 60 mins (T60)



Terminals: 11

Operators: All Operators

Days: 1234567



Peak Week - Passengers Histogram

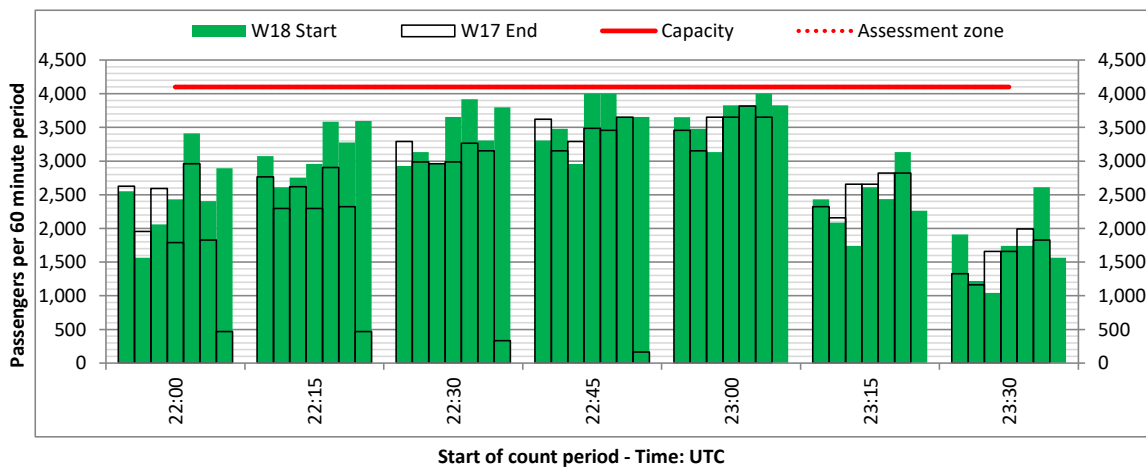
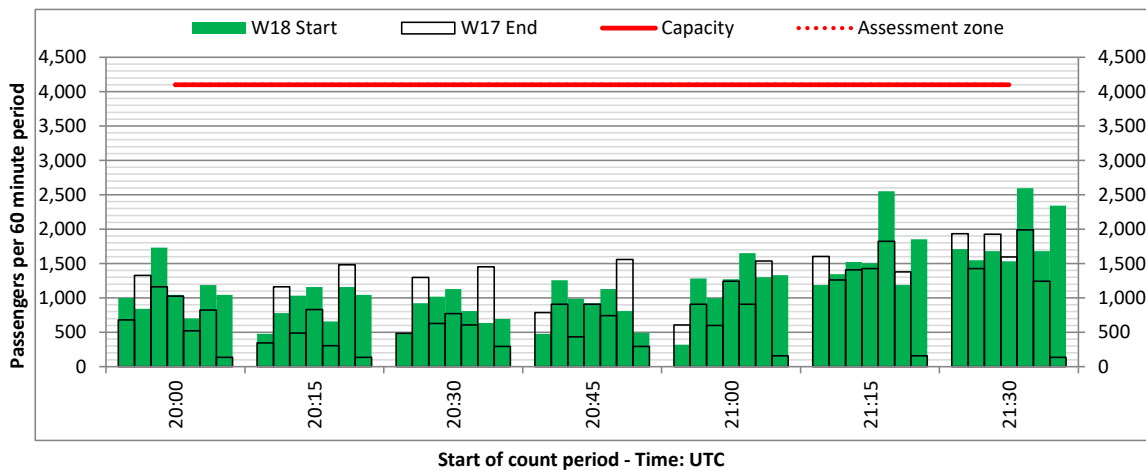
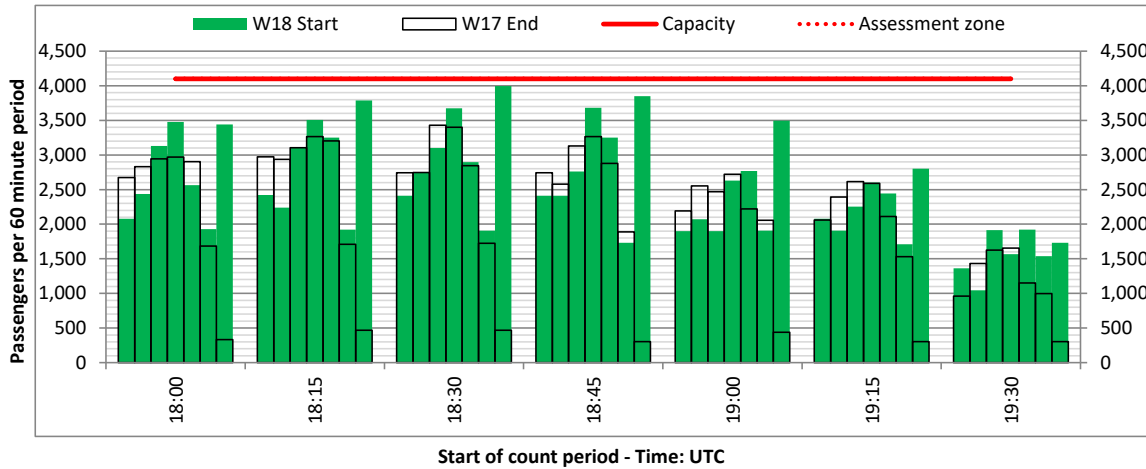
ARRIVAL - 60 minute count rolling every 15 mins (T60/15)



Terminals: 11

Operators: All Operators

Days: 1234567



Glossary



Air Transport Movement (ATM)	Any aircraft movement which is either a scheduled or chartered passenger or cargo flight.
Common Travel Area (CTA)	Origin or Destination is in Republic of Ireland or the Channel Islands.
Demand	Unconstrained demand before any schedule adjustments have been made.
"Fill-in"	These are gaps in a historic series of slots which the carrier requests to "Fill-in" at Initial Submissions - Fill-ins will be recognisably part of the historic series and will have the same flight details to qualify as a "Fill-in".
Hist (SHL)	Snapshot of historic schedule rolled over from end of the previous equivalent season - as advised to airlines in the SHLs.
ICAO Size A	Aircraft with wingspan between 0.00m - 14.99m.
ICAO Size B	Aircraft with wingspan between 15.00m - 23.99m.
ICAO Size C	Aircraft with wingspan between 24.00m - 35.99m.
ICAO Size D	Aircraft with wingspan between 36.00m - 51.99m.
ICAO Size E	Aircraft with wingspan between 52.00m - 64.99m.
ICAO Size F	Aircraft with wingspan between 65.00m - 80.00m.
Init Coord	Snapshot of schedule immediately after Initial Coordination is completed - as advised to airlines in the SALs.
Passenger Air Transport Movement (PATM)	Any aircraft movement which is either a scheduled or chartered passenger flight.
Start	Snapshot of schedule shortly before the start of the scheduling season (exact date given below where used).
Time: Local	Times shown are in LOCAL time for the airport/scheduling season.
Time: UTC	Times shown are in Universal Time Constant (UTC).

Data snapshot descriptions

W17 Start	W17 schedule as cleared on Mon 25-Sep-17.
W17 End	W17 schedule as cleared on Tue 14-Mar-17.
W18 Start	W18 schedule as cleared on Thu 27-Sep-18.
Peak Week	Peak week for W17 is Mon 18-Dec-17 to Sun 24-Dec-17. Peak week for W18 is Mon 17-Dec-18 to Sun 23-Dec-18.

For ACL use

	Airport-Season-Branch-Resource	From date	To date	Time
Full Season Rep 1	STN-W17-SOS Report-Standard	Sun 29-Oct-2017	Sat 24-Mar-2018	UTC
Full Season Rep 2	STN-W17-Live-Standard	Sun 29-Oct-2017	Sat 24-Mar-2018	UTC
Full Season Rep 3	STN-W18-SOS Report-Standard	Sun 28-Oct-2018	Sat 30-Mar-2019	UTC
	Airport-Season-Branch-Resource	From date	To date	Time
Peak Week Rep 1	STN-W17-SOS Report-Standard	Mon 18-Dec-2017	Sun 24-Dec-2017	UTC
Peak Week Rep 2	STN-W17-Live-Standard	Mon 18-Dec-2017	Sun 24-Dec-2017	UTC
Peak Week Rep 3	STN-W18-SOS Report-Standard	Mon 17-Dec-2018	Sun 23-Dec-2018	UTC