

Start of Season Report

Report Date: Tue 16-Oct-2018

Headlines

	W18 Start	vs. W17 Start	vs. W17 End
Total Air Transport Movements (Passenger & Freight)	105,108	▲ 0.3%	▲ 5.9%
Total Passenger Air Transport Movements	105,108	▲ 0.3%	▲ 5.9%
Total Passenger Air Transport Movement Seats	20,413,230	▲ 2.0%	▲ 8.4%
Average Seats per Passenger Air Transport Movement	194.21	▲ 1.6%	▲ 2.3%
Percentage of allocated slots cleared as requested (OK)	96.6%		

Contents

Page	Content
2	Runway Scheduling Limits
3	Coordinator's Report
4	ATM Allocation by Operator (Full season and Peak Week Comparison)
5	Peak Week - Allocation and Slot Adjustment Distribution by Operator
6	Significant Route Changes
7	Full Season - ATM Analysis
8	Full Season - PATM Seats Analysis
9	Full Season - Terminal Analysis
10	Full Season - Aircraft Size Analysis
11	Full Season - Seasonality
12	Peak Week - Hourly Runway Demand
13	Peak Week - Hourly Runway Allocation
14	Peak Week - Hourly Runway Allocation Comparison (W18 Start vs. W17 Start)
15	Peak Week - Hourly Runway Allocation Comparison (W18 Start vs. W17 End)
16	Peak Week Histogram - Departure Passengers (T60/30) - North Terminal - All Operators
17	Peak Week Histogram - Departure Passengers (T120/30) - North Terminal - All Operators
18	Peak Week Histogram - Arrival Passengers (T60/15) - North Domestic - All Operators
19	Peak Week Histogram - Arrival Passengers (T60/30) - North International - All Operators
20	Peak Week Histogram - Departure Passengers (T60/30) - South Terminal - All Operators
21	Peak Week Histogram - Departure Passengers (T120/30) - South Terminal - All Operators
22	Peak Week Histogram - Arrival Passengers (T60/15) - South Domestic - All Operators
23	Peak Week Histogram - Arrival Passengers (T60/30) - South International - All Operators
24	Glossary

W17 scheduling season runs from Sun 29-Oct-2017 to Sat 24-Mar-2018 (147 days).

W18 scheduling season runs from Sun 28-Oct-2018 to Sat 30-Mar-2019 (154 days).

W17 full season data is adjusted by a factor of 1.04762 in order to directly compare against W18 full season data.

Disclaimer

No warranty whether expressed or implied as to the completeness, accuracy, fitness for purpose, or satisfactory quality is given by ACL regarding the information in this report, which is provided by third parties. Accordingly, ACL excludes all liability with regard to such data.

The contents of this report may not be reproduced without the written consent of ACL.

Coordinator's Report



Total demand	109,161	slots		
Total slots allocated	105,108	slots	96.29%	of total demand
Number of slots cleared OK	101,506	slots	96.57%	of total slots cleared

Slots adjusted (not OK) due to:

RUNWAY constraints	3,279	slots	91.0%	of total slots adjusted
TERMINAL constraints	73	slots	2.0%	of total slots adjusted
STAND constraints	-	slots	0.0%	of total slots adjusted
NIGHT constraints	88	slots	2.4%	of total slots adjusted
OTHER constraints	27	slots	0.7%	of total slots adjusted
ARR/DEP TURNAROUND feasibility	135	slots	3.7%	of total slots adjusted

Executive Summary

Runway Constraints

Terminal Constraints

Stand Constraints

No Stand Constraint issues.

Night Constraints

Other Constraints

Arr/Dep Turnaround Feasibility

Peak Week - Allocation and Slot Adjustment Distribution by Operator

Schedule: W18 Start



Operator	W18 allocated ATMs	SLOT ADJUSTMENTS (MINUTES OFF REQUESTED TIME)														Requests with NO slot allocated	
		0	5	10	15	20	25	30	35	40	45	50	55	60	>60		
Aegean Airlines	10	100.0%	0.0%	0.0%	0.0%	0.0%	0.0%	0.0%	0.0%	0.0%	0.0%	0.0%	0.0%	0.0%	0.0%	0.0%	-
Aer Lingus	104	91.3%	2.9%	2.9%	1.0%	1.0%	0.0%	0.0%	0.0%	0.0%	0.0%	0.0%	0.0%	0.0%	1.0%	0.0%	8
Aeroflot	-	-	-	-	-	-	-	-	-	-	-	-	-	-	-	-	-
Air Arabia Maroc	12	100.0%	0.0%	0.0%	0.0%	0.0%	0.0%	0.0%	0.0%	0.0%	0.0%	0.0%	0.0%	0.0%	0.0%	0.0%	-
Air China	6	100.0%	0.0%	0.0%	0.0%	0.0%	0.0%	0.0%	0.0%	0.0%	0.0%	0.0%	0.0%	0.0%	0.0%	0.0%	-
Air Europa	32	90.6%	0.0%	0.0%	0.0%	3.1%	0.0%	0.0%	0.0%	0.0%	0.0%	0.0%	0.0%	0.0%	0.0%	6.3%	7
Air Itlay	-	-	-	-	-	-	-	-	-	-	-	-	-	-	-	-	16
Air Malta	16	87.5%	0.0%	0.0%	0.0%	0.0%	0.0%	12.5%	0.0%	0.0%	0.0%	0.0%	0.0%	0.0%	0.0%	0.0%	-
Air Transat	14	92.9%	0.0%	0.0%	7.1%	0.0%	0.0%	0.0%	0.0%	0.0%	0.0%	0.0%	0.0%	0.0%	0.0%	0.0%	-
AirBaltic	28	64.3%	0.0%	3.6%	0.0%	0.0%	10.7%	0.0%	0.0%	0.0%	0.0%	0.0%	0.0%	0.0%	0.0%	21.4%	2
Anisec	14	85.7%	7.1%	0.0%	7.1%	0.0%	0.0%	0.0%	0.0%	0.0%	0.0%	0.0%	0.0%	0.0%	0.0%	0.0%	-
Aurigny Air Services	82	100.0%	0.0%	0.0%	0.0%	0.0%	0.0%	0.0%	0.0%	0.0%	0.0%	0.0%	0.0%	0.0%	0.0%	0.0%	2
Austrian Airlines	-	-	-	-	-	-	-	-	-	-	-	-	-	-	-	-	-
Belavia Belarusian Airlines	6	100.0%	0.0%	0.0%	0.0%	0.0%	0.0%	0.0%	0.0%	0.0%	0.0%	0.0%	0.0%	0.0%	0.0%	0.0%	-
British Airways	818	99.9%	0.0%	0.0%	0.0%	0.0%	0.0%	0.1%	0.0%	0.0%	0.0%	0.0%	0.0%	0.0%	0.0%	0.0%	-
Cathay Pacific	14	100.0%	0.0%	0.0%	0.0%	0.0%	0.0%	0.0%	0.0%	0.0%	0.0%	0.0%	0.0%	0.0%	0.0%	0.0%	-
Cello Aviation	-	-	-	-	-	-	-	-	-	-	-	-	-	-	-	-	4
China Airlines	8	100.0%	0.0%	0.0%	0.0%	0.0%	0.0%	0.0%	0.0%	0.0%	0.0%	0.0%	0.0%	0.0%	0.0%	0.0%	-
China Eastern	6	100.0%	0.0%	0.0%	0.0%	0.0%	0.0%	0.0%	0.0%	0.0%	0.0%	0.0%	0.0%	0.0%	0.0%	0.0%	-
Cobalt Air	12	100.0%	0.0%	0.0%	0.0%	0.0%	0.0%	0.0%	0.0%	0.0%	0.0%	0.0%	0.0%	0.0%	0.0%	0.0%	-
EasyJet	2,269	96.9%	1.8%	0.4%	0.1%	0.2%	0.0%	0.2%	0.0%	0.1%	0.0%	0.1%	0.0%	0.1%	0.2%	0.0%	7
Emirates	42	100.0%	0.0%	0.0%	0.0%	0.0%	0.0%	0.0%	0.0%	0.0%	0.0%	0.0%	0.0%	0.0%	0.0%	0.0%	-
Enter Air	4	25.0%	0.0%	0.0%	0.0%	0.0%	0.0%	0.0%	0.0%	0.0%	0.0%	25.0%	0.0%	0.0%	50.0%	0.0%	-
Finnair	6	50.0%	0.0%	16.7%	0.0%	0.0%	0.0%	0.0%	0.0%	0.0%	0.0%	0.0%	0.0%	0.0%	33.3%	0.0%	-
Flybe	38	100.0%	0.0%	0.0%	0.0%	0.0%	0.0%	0.0%	0.0%	0.0%	0.0%	0.0%	0.0%	0.0%	0.0%	0.0%	-
Freebird Airlines	1	100.0%	0.0%	0.0%	0.0%	0.0%	0.0%	0.0%	0.0%	0.0%	0.0%	0.0%	0.0%	0.0%	0.0%	0.0%	-
Georgian Airways	6	100.0%	0.0%	0.0%	0.0%	0.0%	0.0%	0.0%	0.0%	0.0%	0.0%	0.0%	0.0%	0.0%	0.0%	0.0%	-
Germania	5	100.0%	0.0%	0.0%	0.0%	0.0%	0.0%	0.0%	0.0%	0.0%	0.0%	0.0%	0.0%	0.0%	0.0%	0.0%	-
Iberia Express	28	89.3%	7.1%	0.0%	3.6%	0.0%	0.0%	0.0%	0.0%	0.0%	0.0%	0.0%	0.0%	0.0%	0.0%	0.0%	12
Icelandair	14	92.9%	7.1%	0.0%	0.0%	0.0%	0.0%	0.0%	0.0%	0.0%	0.0%	0.0%	0.0%	0.0%	0.0%	0.0%	2
Iraqi Airways	6	66.7%	0.0%	0.0%	0.0%	0.0%	0.0%	0.0%	0.0%	0.0%	0.0%	0.0%	0.0%	0.0%	33.3%	0.0%	-
Mahan Air	-	-	-	-	-	-	-	-	-	-	-	-	-	-	-	-	-
Med-View Airline	6	50.0%	16.7%	0.0%	0.0%	0.0%	0.0%	0.0%	0.0%	0.0%	16.7%	0.0%	0.0%	0.0%	16.7%	0.0%	-
Monarch Airlines	-	-	-	-	-	-	-	-	-	-	-	-	-	-	-	-	-
Norwegian	584	98.8%	0.2%	0.0%	0.2%	0.0%	0.0%	0.2%	0.2%	0.0%	0.2%	0.2%	0.0%	0.0%	0.2%	0.0%	-
Primera Air	-	-	-	-	-	-	-	-	-	-	-	-	-	-	-	-	28
Qatar Airways	34	47.1%	5.9%	8.8%	0.0%	0.0%	0.0%	14.7%	2.9%	0.0%	0.0%	0.0%	2.9%	0.0%	17.6%	0.0%	6
Rossiya Airlines	14	100.0%	0.0%	0.0%	0.0%	0.0%	0.0%	0.0%	0.0%	0.0%	0.0%	0.0%	0.0%	0.0%	0.0%	0.0%	-
Royal Air Maroc	14	100.0%	0.0%	0.0%	0.0%	0.0%	0.0%	0.0%	0.0%	0.0%	0.0%	0.0%	0.0%	0.0%	0.0%	0.0%	-
Rwandair	8	100.0%	0.0%	0.0%	0.0%	0.0%	0.0%	0.0%	0.0%	0.0%	0.0%	0.0%	0.0%	0.0%	0.0%	0.0%	-
Ryanair	150	99.3%	0.7%	0.0%	0.0%	0.0%	0.0%	0.0%	0.0%	0.0%	0.0%	0.0%	0.0%	0.0%	0.0%	0.0%	42
SAMARA AIRLINES JSC	2	100.0%	0.0%	0.0%	0.0%	0.0%	0.0%	0.0%	0.0%	0.0%	0.0%	0.0%	0.0%	0.0%	0.0%	0.0%	-
Signature	-	-	-	-	-	-	-	-	-	-	-	-	-	-	-	-	-
Small Planet Airlines	-	-	-	-	-	-	-	-	-	-	-	-	-	-	-	-	-
Swiss International	2	100.0%	0.0%	0.0%	0.0%	0.0%	0.0%	0.0%	0.0%	0.0%	0.0%	0.0%	0.0%	0.0%	0.0%	0.0%	4
TAP Air Portugal	50	100.0%	0.0%	0.0%	0.0%	0.0%	0.0%	0.0%	0.0%	0.0%	0.0%	0.0%	0.0%	0.0%	0.0%	0.0%	-
Thomas Cook (UK)	123	90.2%	0.0%	0.0%	0.0%	1.6%	1.6%	0.0%	0.8%	0.0%	0.0%	0.0%	0.8%	0.0%	4.9%	0.0%	3
Tianjin Airlines	-	-	-	-	-	-	-	-	-	-	-	-	-	-	-	-	-
Titan Airways	25	88.0%	0.0%	0.0%	4.0%	0.0%	0.0%	0.0%	0.0%	0.0%	4.0%	4.0%	0.0%	0.0%	0.0%	0.0%	-
Travel Service	8	87.5%	12.5%	0.0%	0.0%	0.0%	0.0%	0.0%	0.0%	0.0%	0.0%	0.0%	0.0%	0.0%	0.0%	0.0%	2
TUI Airways	198	84.8%	1.5%	3.0%	1.5%	1.0%	0.5%	0.5%	0.5%	0.0%	0.0%	1.5%	0.0%	4.5%	0.0%	1	
Tunisair	6	100.0%	0.0%	0.0%	0.0%	0.0%	0.0%	0.0%	0.0%	0.0%	0.0%	0.0%	0.0%	0.0%	0.0%	0.0%	-
Turkish Airlines	38	86.8%	7.9%	5.3%	0.0%	0.0%	0.0%	0.0%	0.0%	0.0%	0.0%	0.0%	0.0%	0.0%	0.0%	0.0%	2
Ukraine International	30	100.0%	0.0%	0.0%	0.0%	0.0%	0.0%	0.0%	0.0%	0.0%	0.0%	0.0%	0.0%	0.0%	0.0%	0.0%	14
Virgin Atlantic	75	100.0%	0.0%	0.0%	0.0%	0.0%	0.0%	0.0%	0.0%	0.0%	0.0%	0.0%	0.0%	0.0%	0.0%	0.0%	-
Vueling	154	92.2%	6.5%	0.0%	0.0%	0.6%	0.6%	0.0%	0.0%	0.0%	0.0%	0.0%	0.0%	0.0%	0.0%	0.0%	40
Westjet	20	100.0%	0.0%	0.0%	0.0%	0.0%	0.0%	0.0%	0.0%	0.0%	0.0%	0.0%	0.0%	0.0%	0.0%	0.0%	-
Wizz Air	14	92.9%	0.0%	0.0%	0.0%	0.0%	7.1%	0.0%	0.0%	0.0%	0.0%	0.0%	0.0%	0.0%	0.0%	0.0%	-
WOW Air	26	65.4%	3.8%	3.8%	23.1%	3.8%	0.0%	0.0%	0.0%	0.0%	0.0%	0.0%	0.0%	0.0%	0.0%	0.0%	5
TOTAL	5,182	95.7%	1.4%	0.5%	0.3%	0.2%	0.2%	0.3%	0.1%	0.1%	0.1%	0.1%	0.1%	0.1%	0.8%	207	

Operators with 0 'allocated ATMs' and 0 'Requests with NO slot allocated' in W18, are included in this list due to having slots allocated in either W17 Start or W17 End schedules.

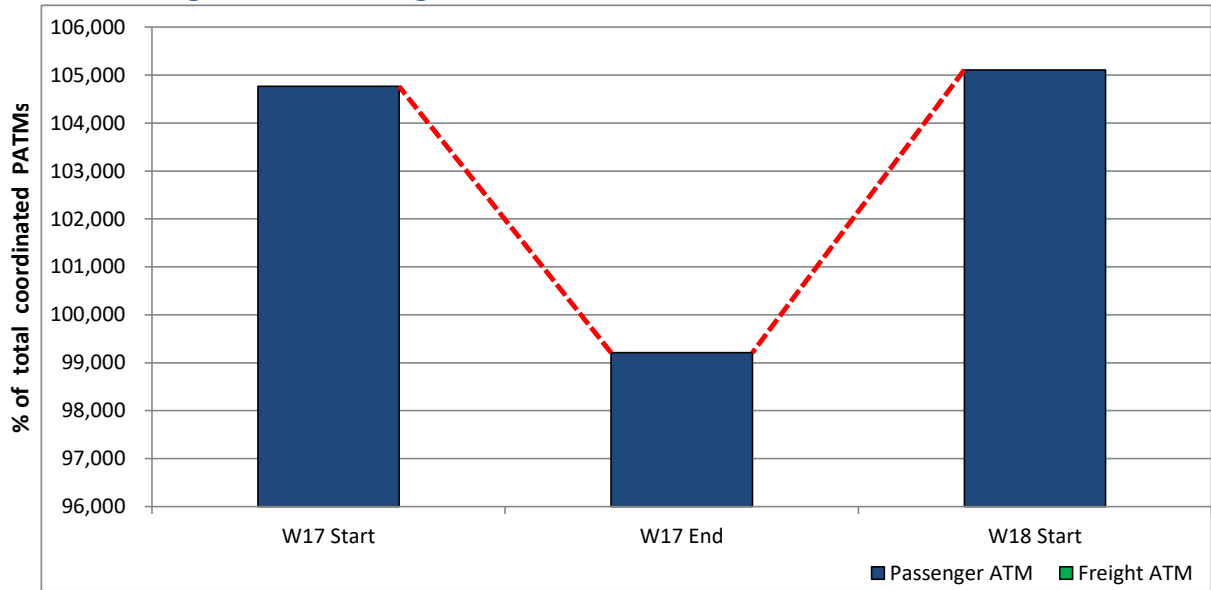
Significant Route Changes

Operator	Category	Description of change from W17 schedule to W18 schedule
AirBaltic	NEW	New Route to TLL
Anisec	NEW	New Operator flying to VIE (Operating as LEVEL)
British Airways	NEW	New Route to LAS, PMI
British Airways	CANCELLED	Cancelled route to OAK
China Eastern	NEW	New Operator flying to PVG
EasyJet	NEW	New Routes to AAR, AQJ, RMU, RVN, TXL, WAW
Indigo	NEW	New Operator flying to TBS
Mahan Air	CANCELLED	Cancelled Entire Operation
Monarch Airlines	CANCELLED	Cancelled Entire Operation
Norwegian	NEW	New Routes to AUS, ORD, TPA
Norwegian	CANCELLED	Cancelled routes to AAL, KEF, SEA, SZG
Qatar Airways	NEW	New Operator flying to DOH
Rossiya Airlines	CHANGE	Swap from Aeroflot (routing changed to LED from SVO)
Ryanair	CANCELLED	Cancelled route to BFS
SAMARA AIRLINES JSC	NEW	New Operator flying to HRG
Small Planet Airlines	CANCELLED	Cancelled Entire Operation
Tianjin Airlines	CANCELLED	Cancelled Entire Operation
TUI Airways	NEW	New Routes to KRK, LGK, LYS, NBE, UTP
TUI Airways	CANCELLED	Cancelled routes to KBV, LRM, POP, VDB
Turkish Airlines	NEW	New Route to ESB
Vueling	CANCELLED	Cancelled routes to OVD, RNS, SCQ

Full Season - ATM Analysis

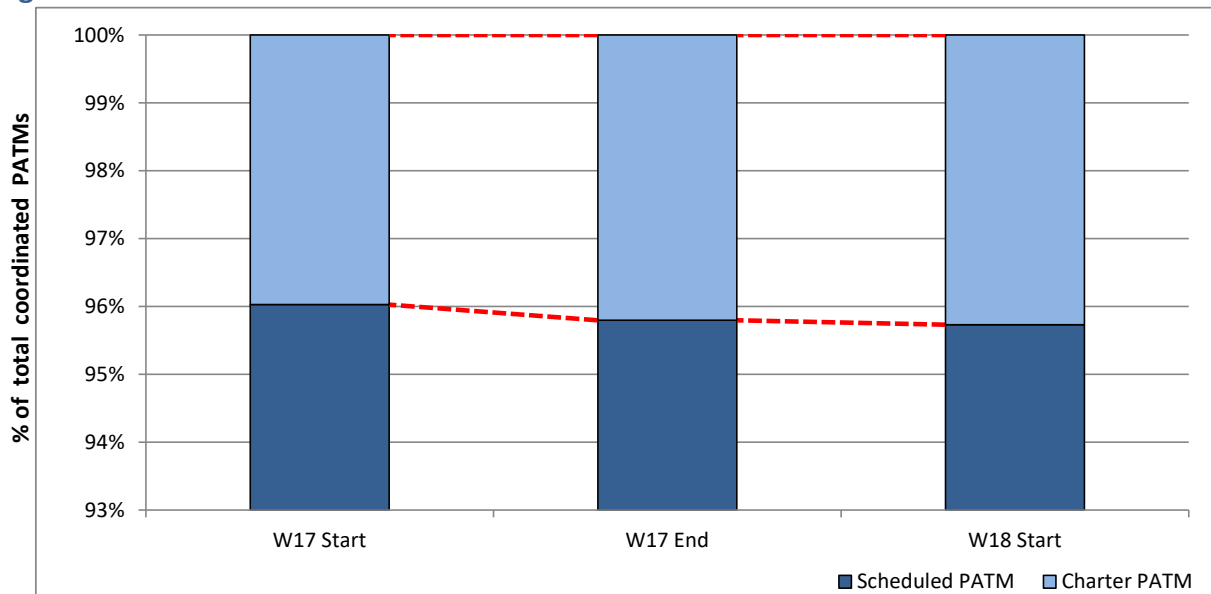


Total ATMs: Passenger ATMs vs. Freight ATMs



Schedule Snapshot

Passenger ATMs: Scheduled vs. Charter

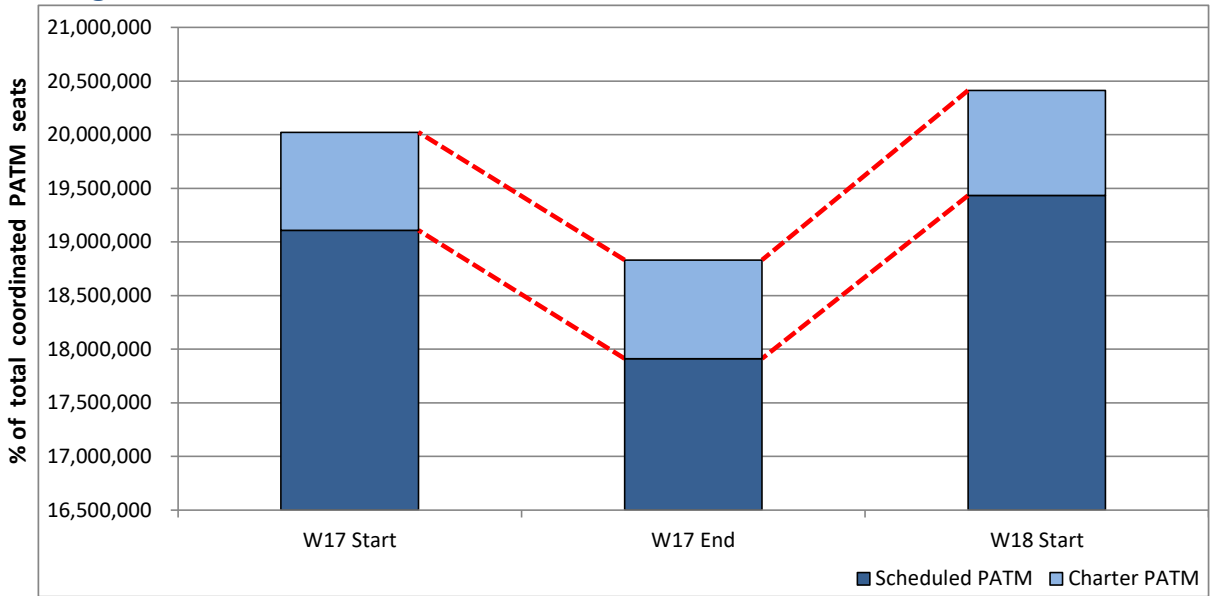


Schedule Snapshot

Full Season - PATM Seats Analysis

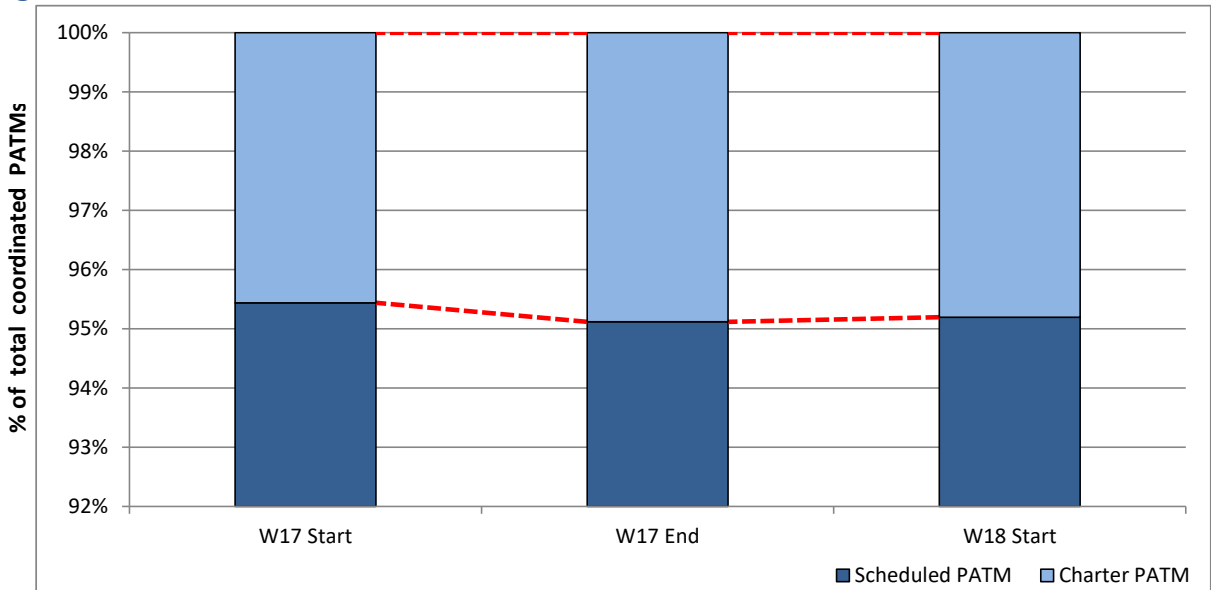


Total Passenger ATM seats: Scheduled vs. Charter



Schedule Snapshot

Passenger ATM seats: Scheduled vs. Charter

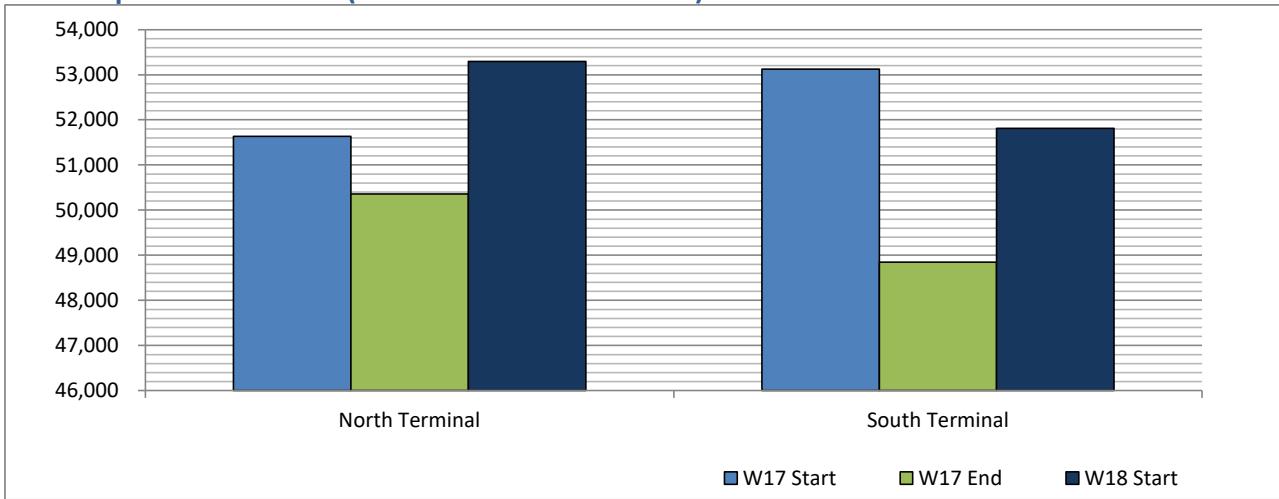


Schedule Snapshot

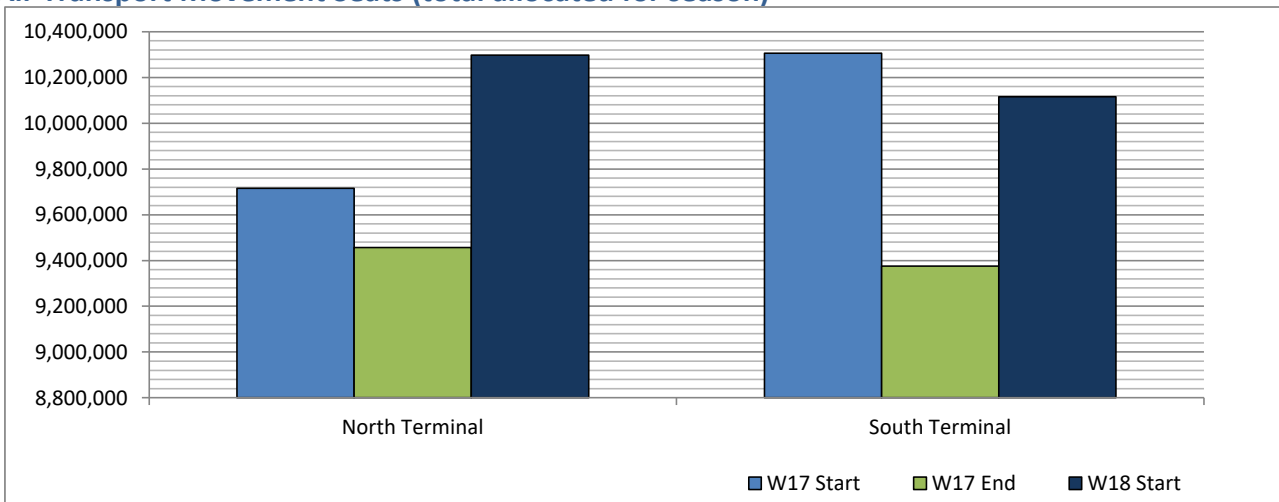
Full Season - Terminal Analysis



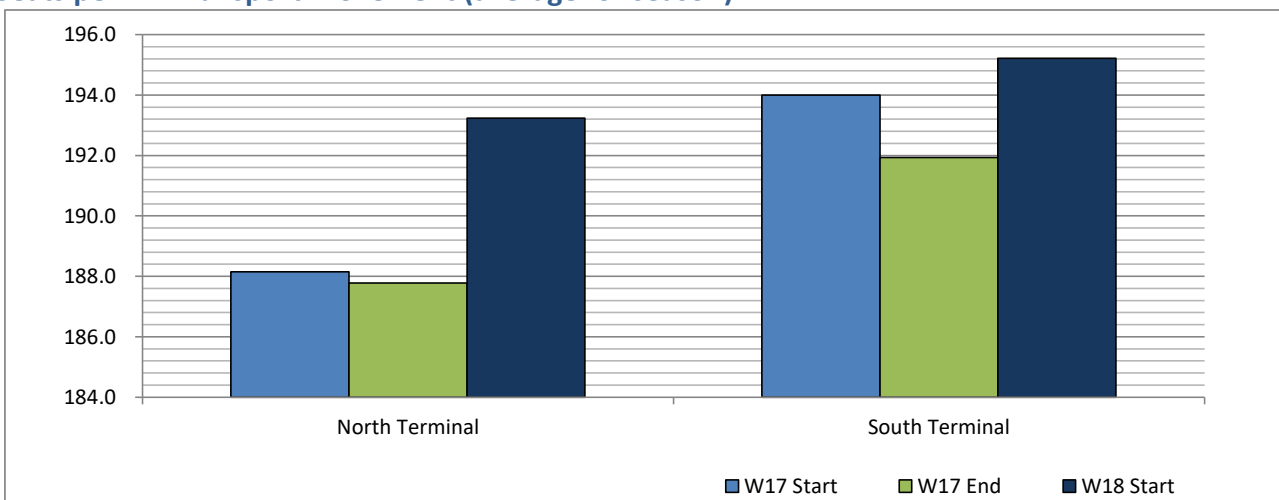
Air Transport Movements (total allocated for season)



Air Transport Movement Seats (total allocated for season)



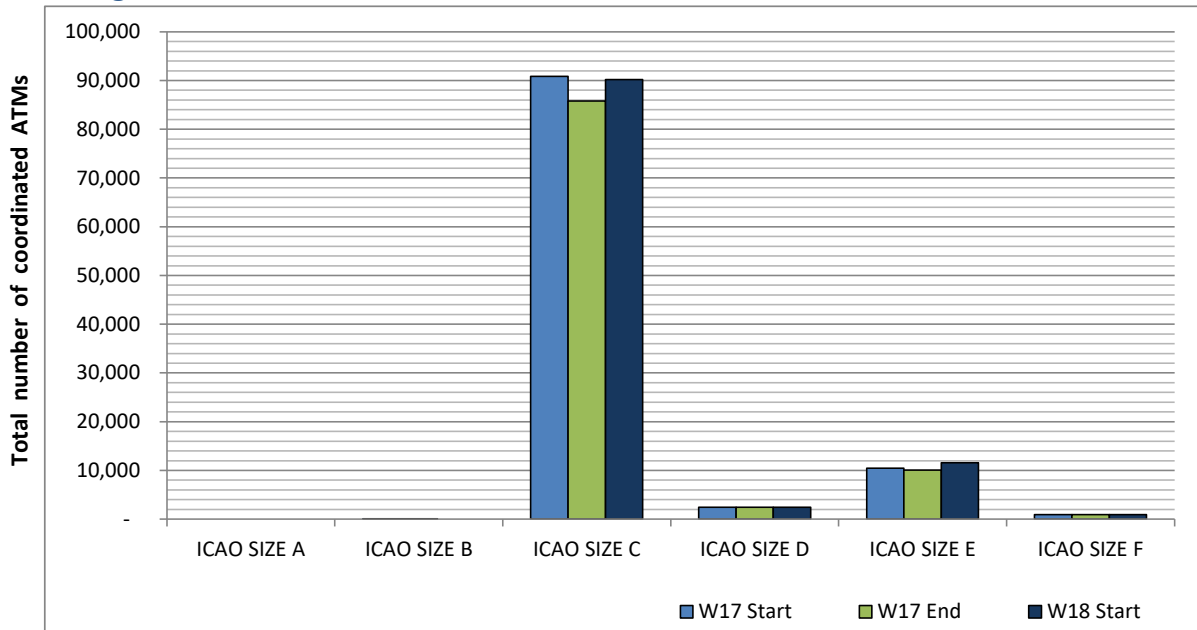
Seats per Air Transport Movement (average for season)



Full Season - Aircraft Size Analysis

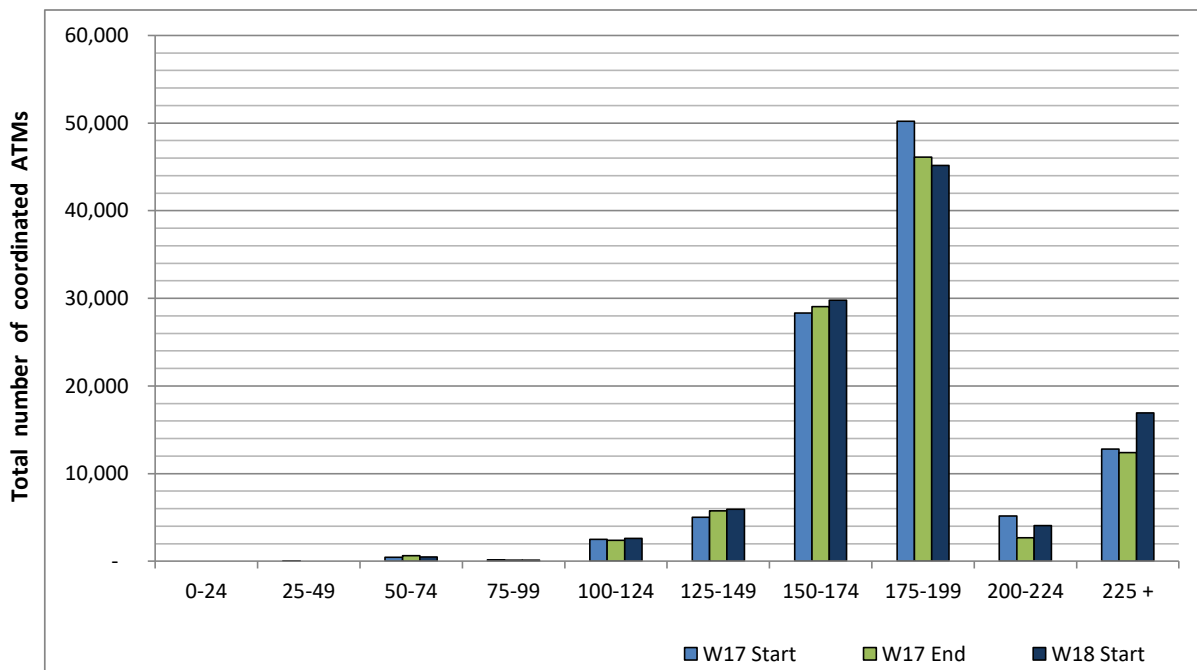


ICAO size designation



Note: See Glossary for definitions of ICAO SIZE groupings

Air Transport Movement seat distribution

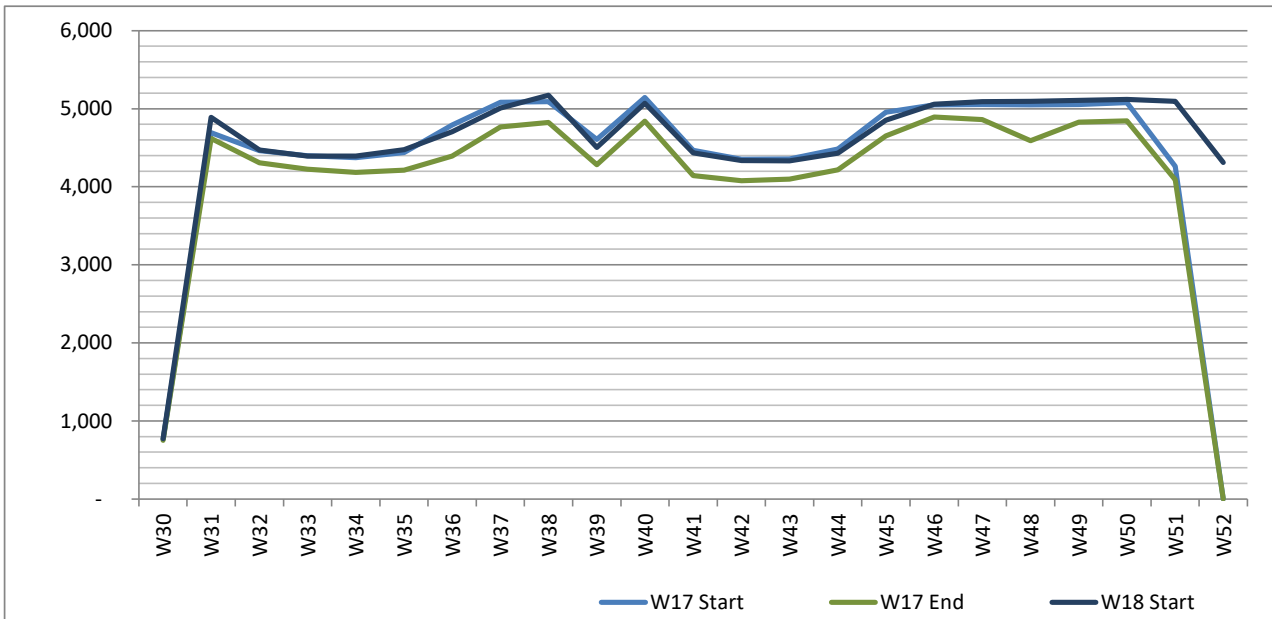


Note: FREIGHT-ONLY services with 0 seats are included in the first seat band '0-24'

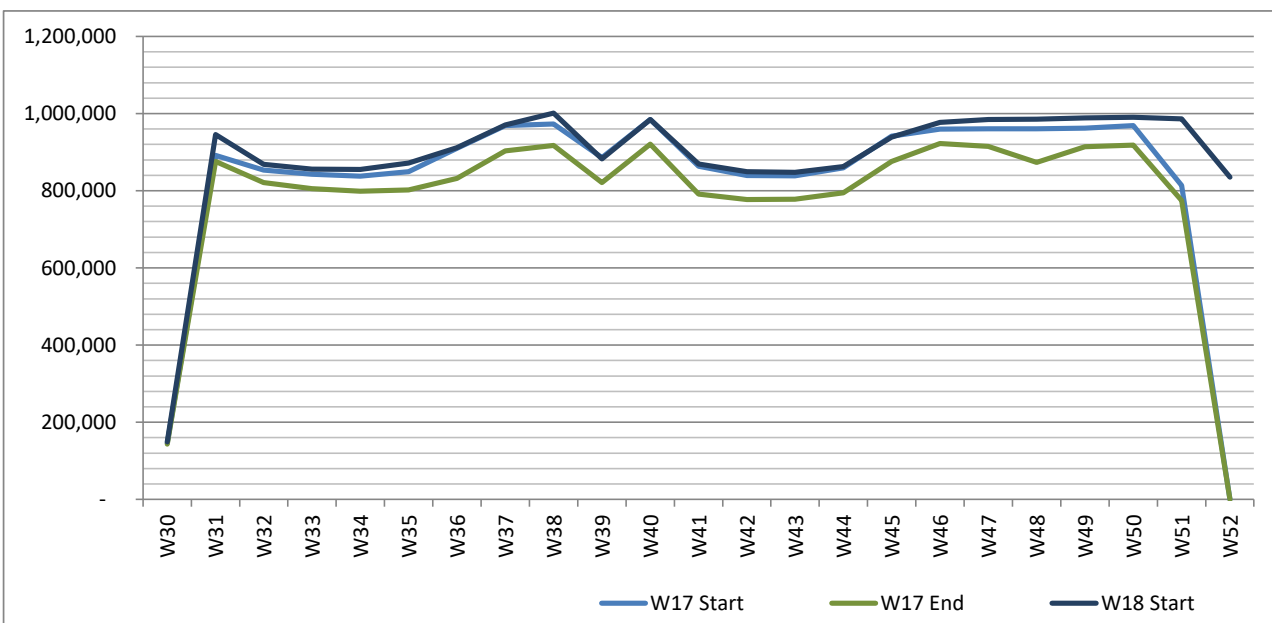
Full Season - Seasonality



Air Transport Movements by week of season



Air Transport Movement Seats by week of season



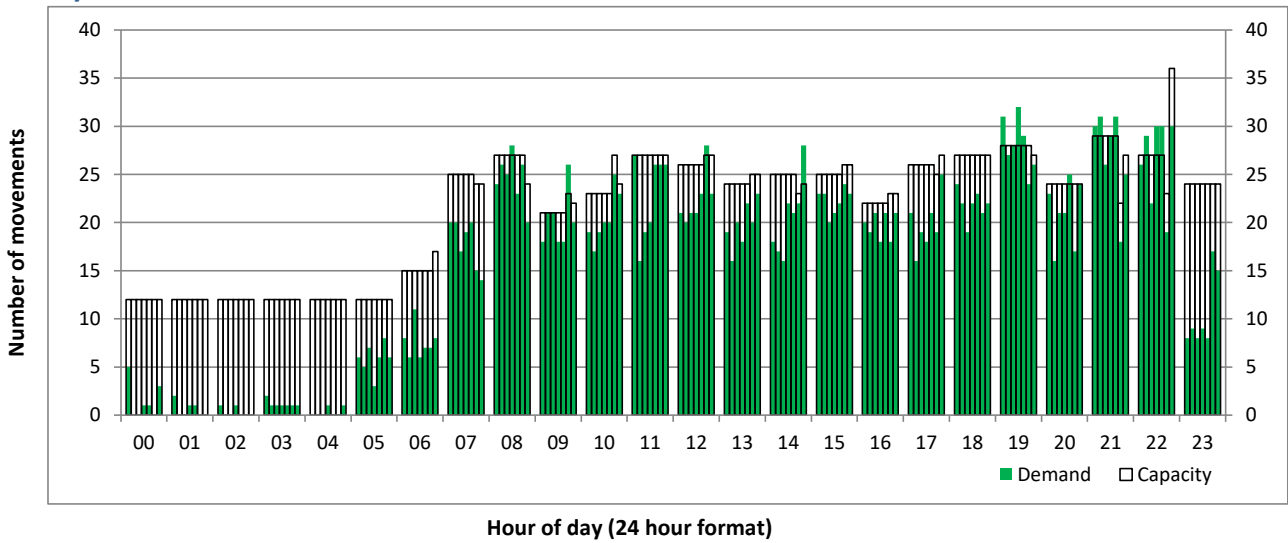
Peak Week - Hourly Runway Demand

Schedule: W18 Start



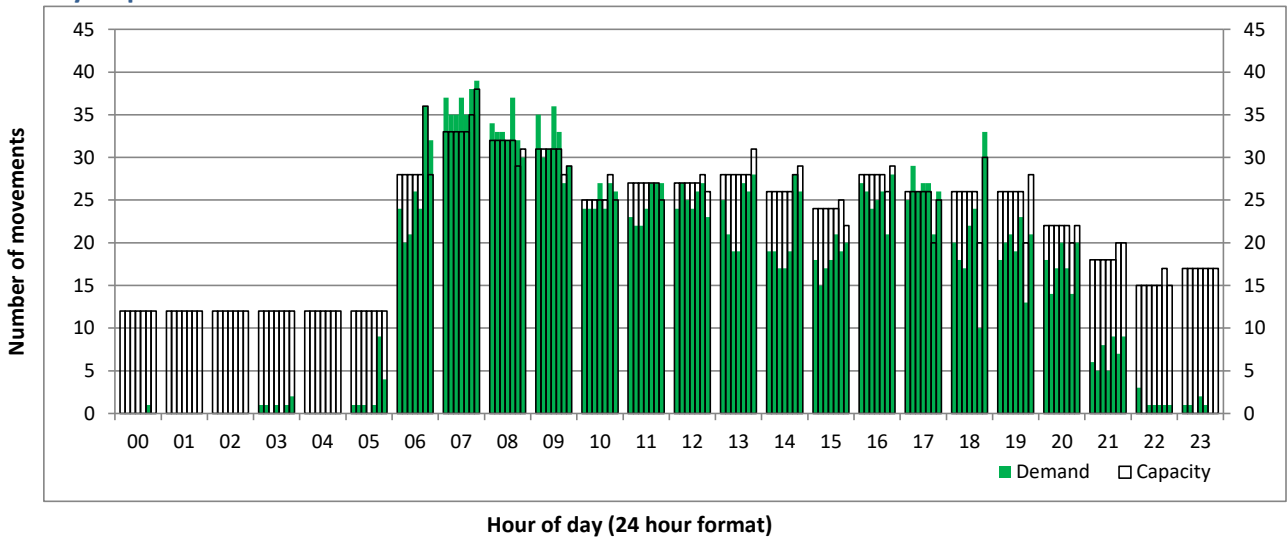
Hourly Arrival Demand

Time: UTC



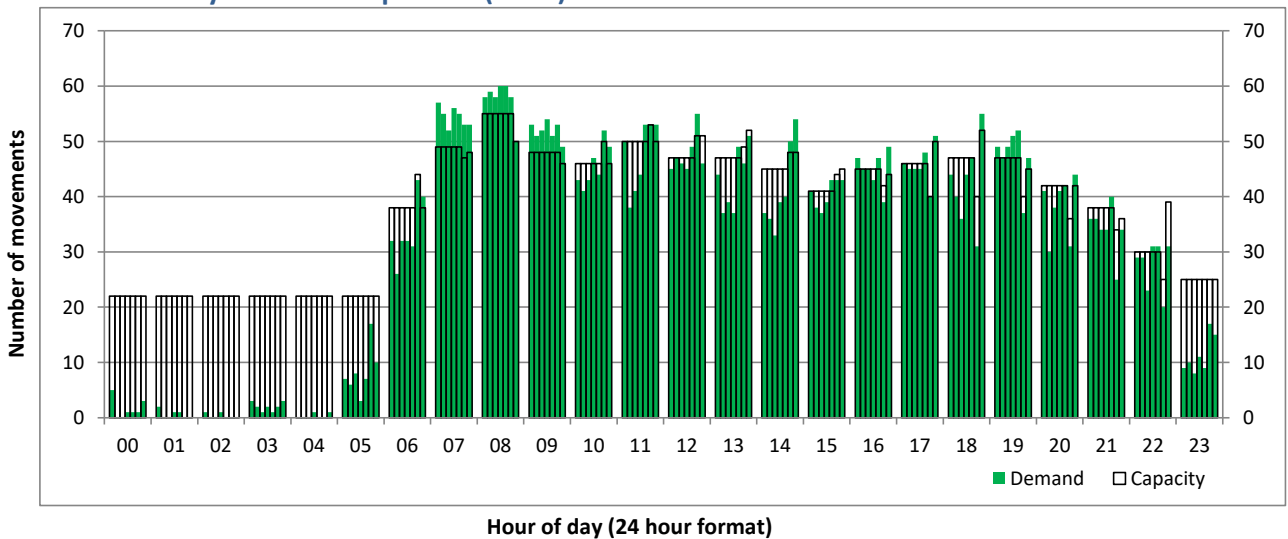
Hourly Departure Demand

Time: UTC



Combined Hourly Arrival & Departure (Total) Demand

Time: UTC



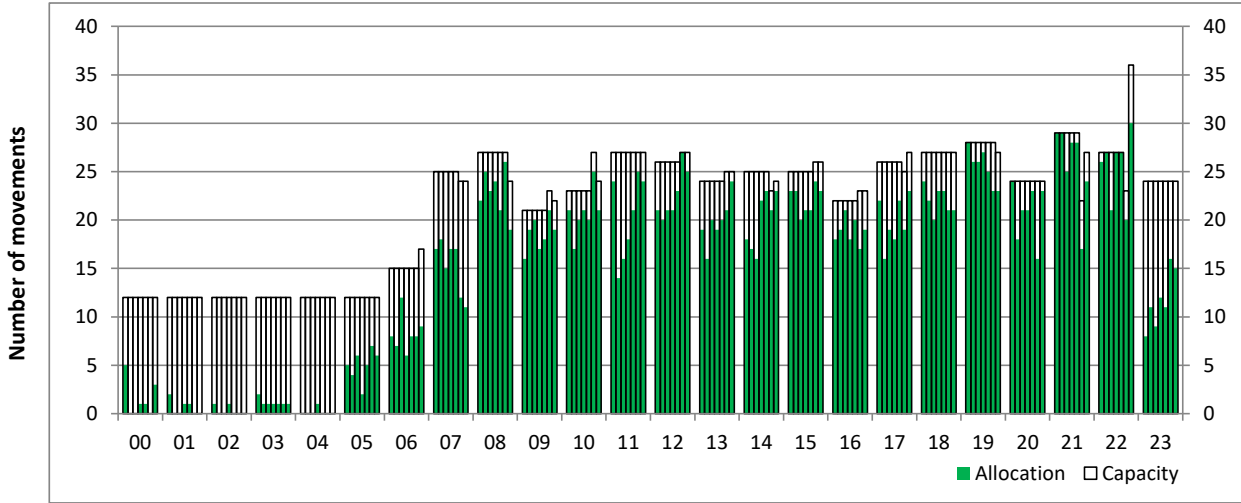
Peak Week - Hourly Runway Allocation

Schedule: W18 Start



Hourly Arrival Allocation

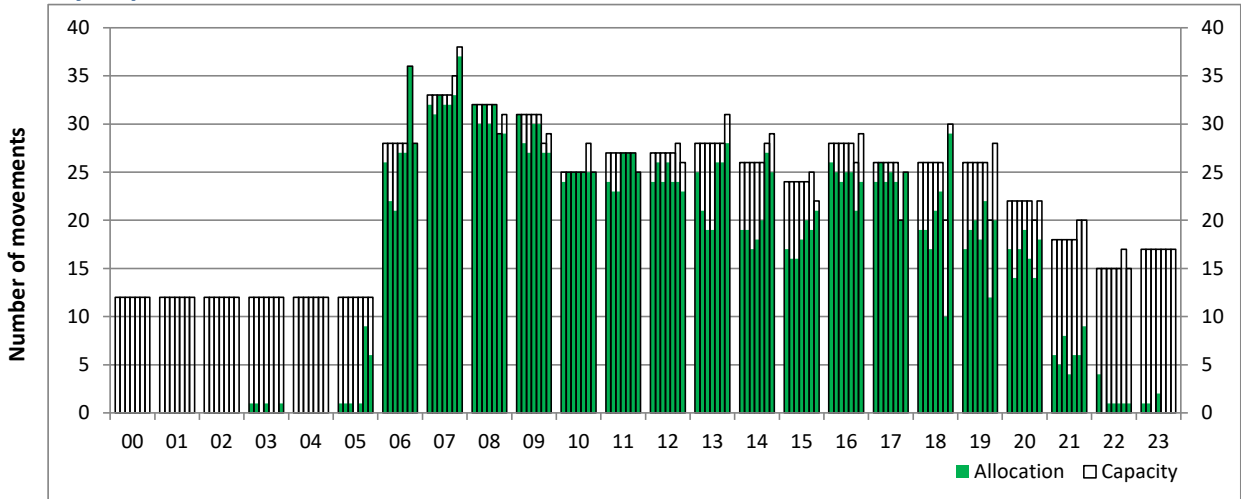
Time: UTC



Hour of day (24 hour format)

Hourly Departure Allocation

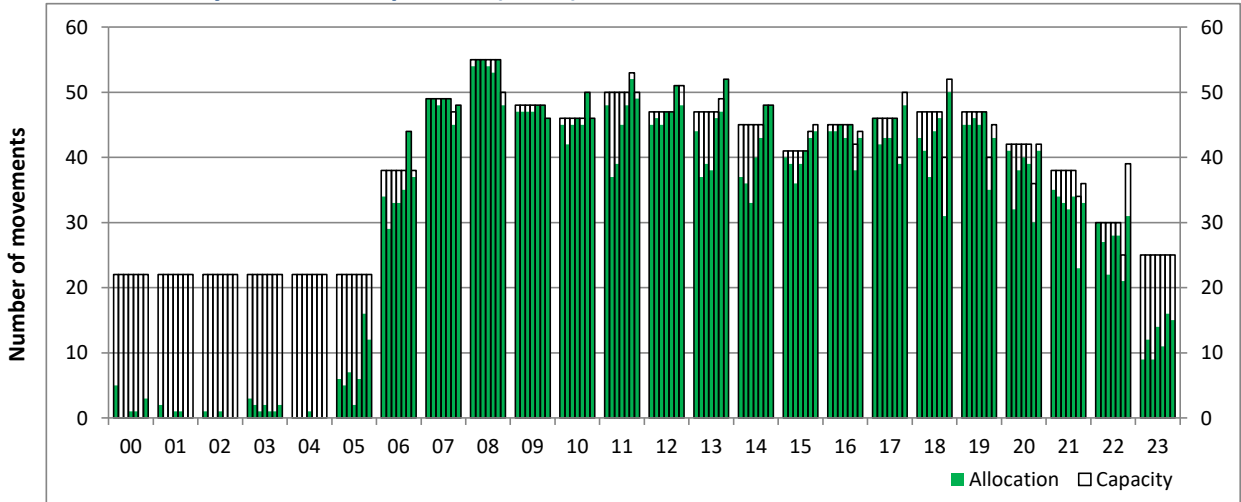
Time: UTC



Hour of day (24 hour format)

Combined Hourly Arrival & Departure (Total) Allocation

Time: UTC



Hour of day (24 hour format)

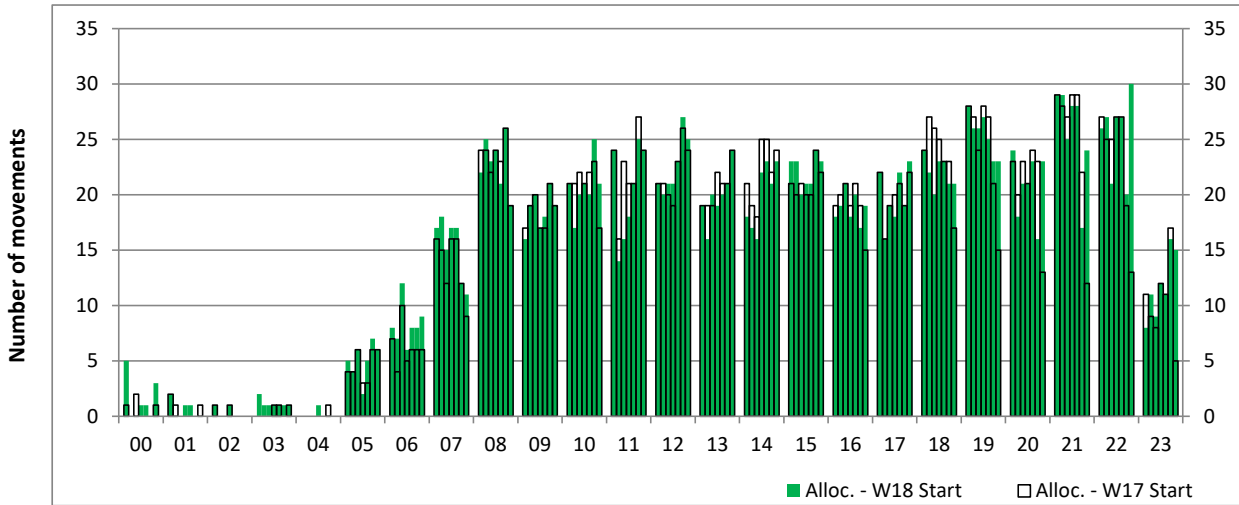
Peak Week - Runway Allocation Comparison

Comparison of W18 Start vs. W17 Start



Hourly Arrival Allocation

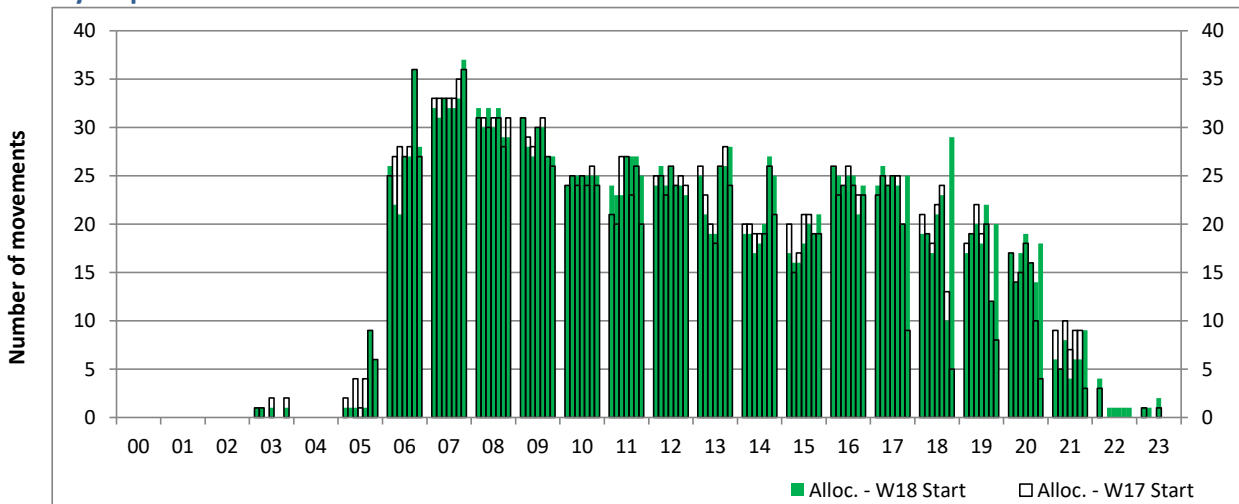
Time: UTC



Hour of day (24 hour format)

Hourly Departure Allocation

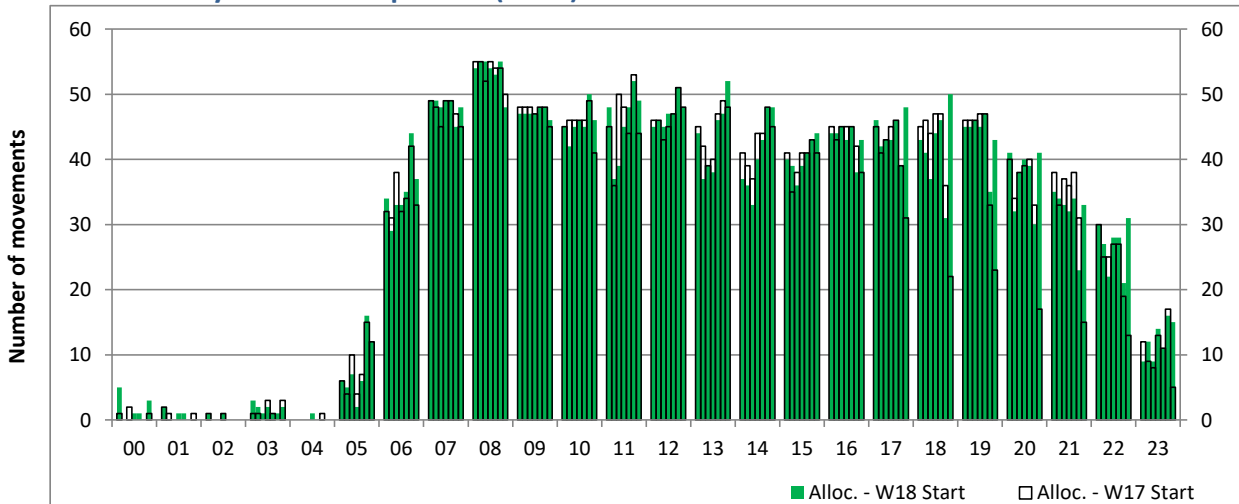
Time: UTC



Hour of day (24 hour format)

Combined Hourly Arrival & Departure (Total) Allocation

Time: UTC



Hour of day (24 hour format)

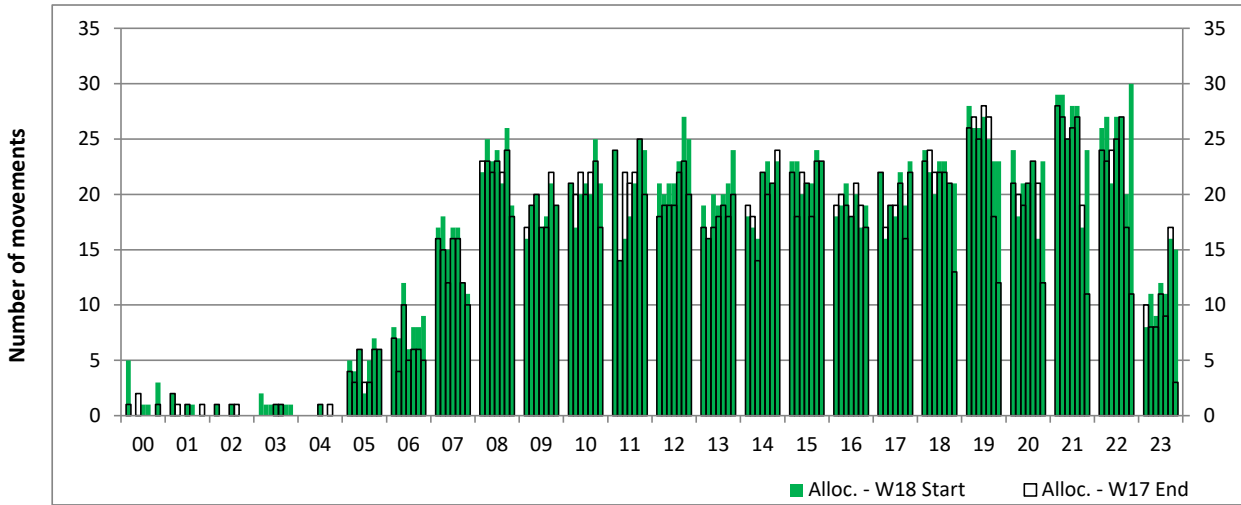
Peak Week - Runway Allocation Comparison

Comparison of W18 Start vs. W17 End



Hourly Arrival Allocation

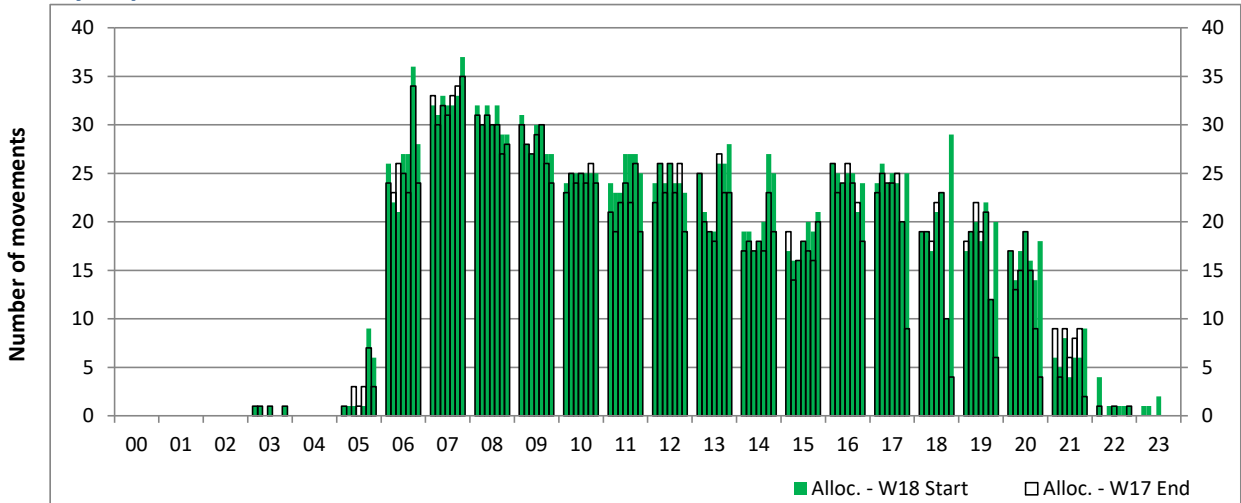
Time: UTC



Hour of day (24 hour format)

Hourly Departure Allocation

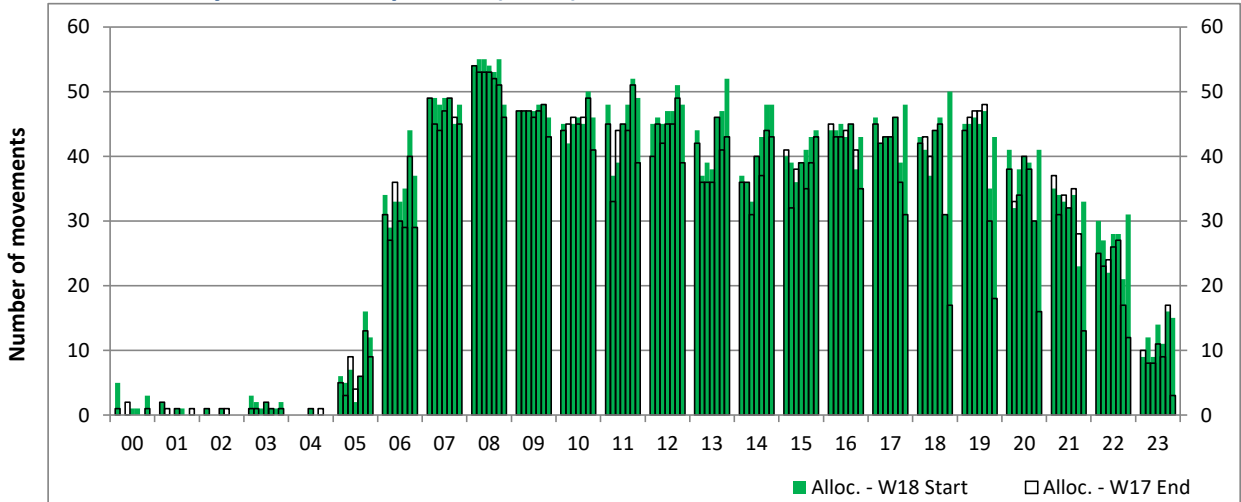
Time: UTC



Hour of day (24 hour format)

Combined Hourly Arrival & Departure (Total) Allocation

Time: UTC



Hour of day (24 hour format)

Peak Week - Passengers Histogram

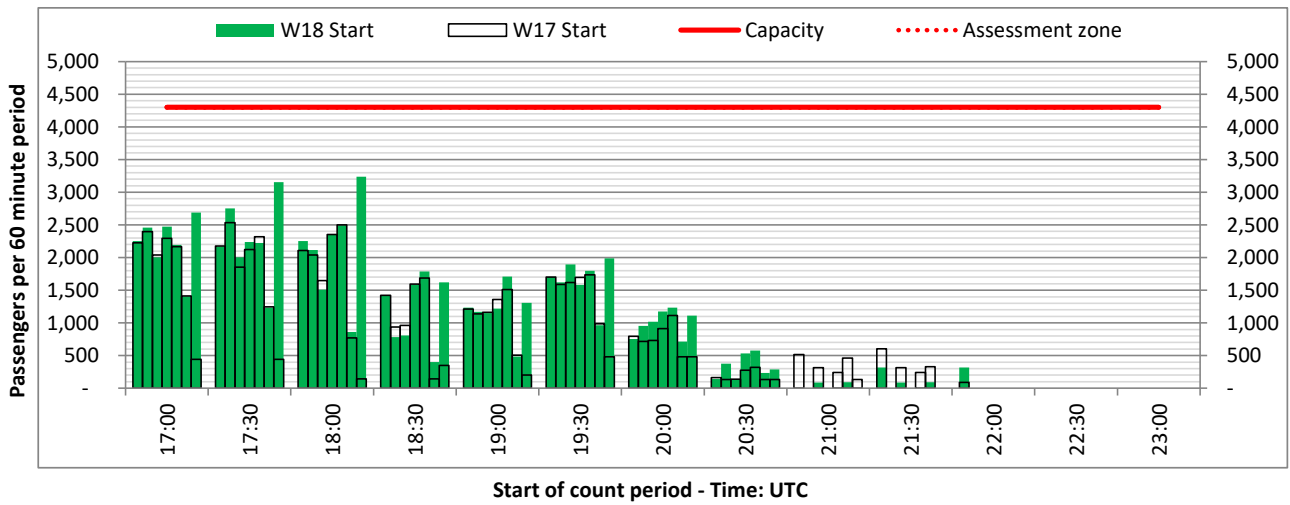
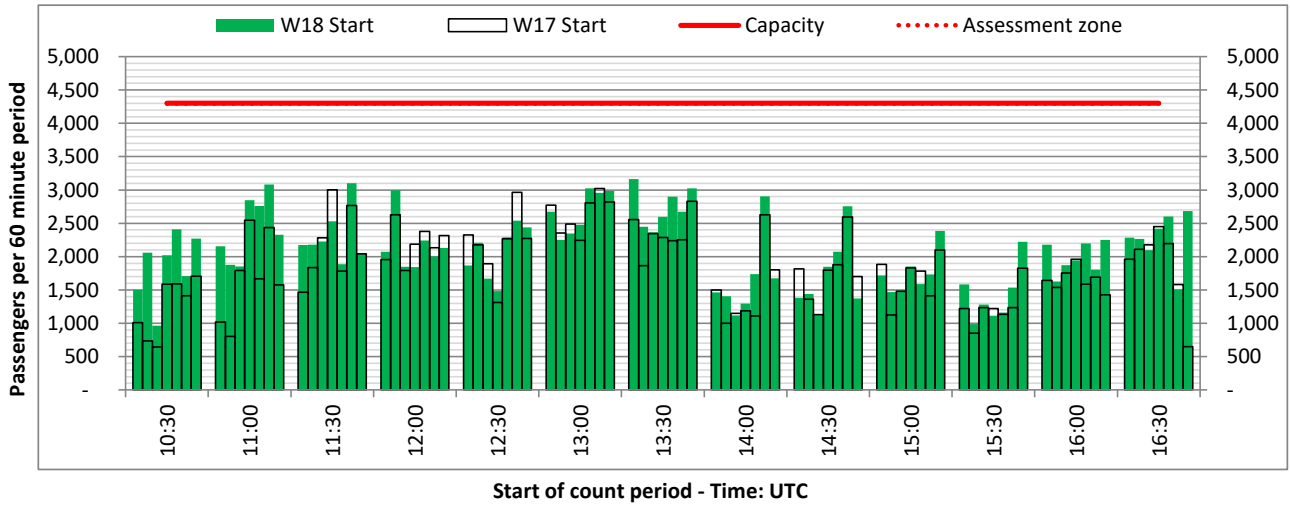
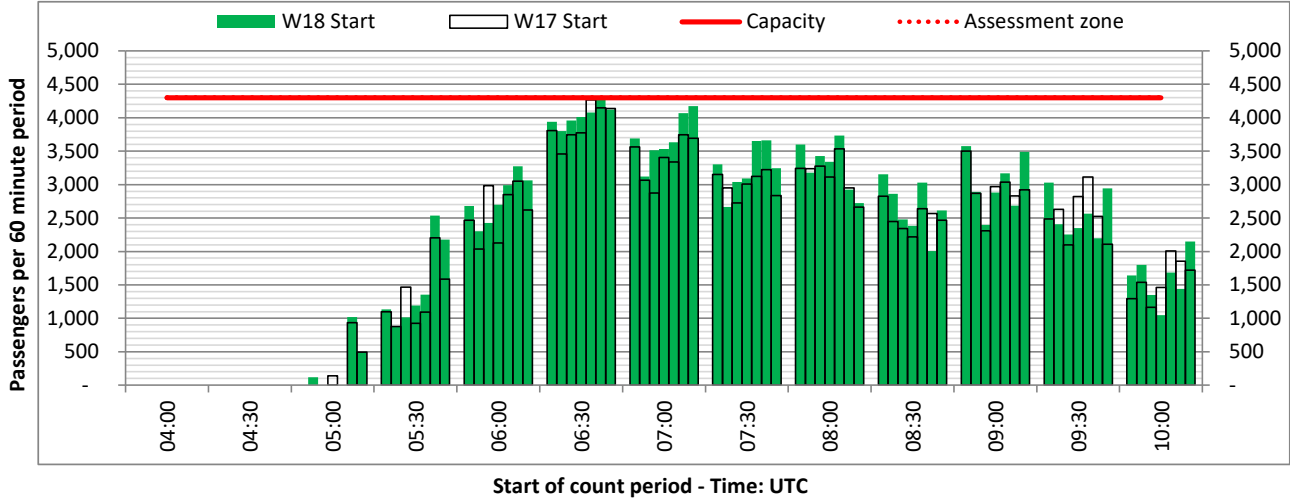
DEPARTURE - 60 minute count rolling every 30 mins (T60/30)



Terminals: 2D 2I

Operators: All Operators

Days: 1234567



Peak Week - Passengers Histogram

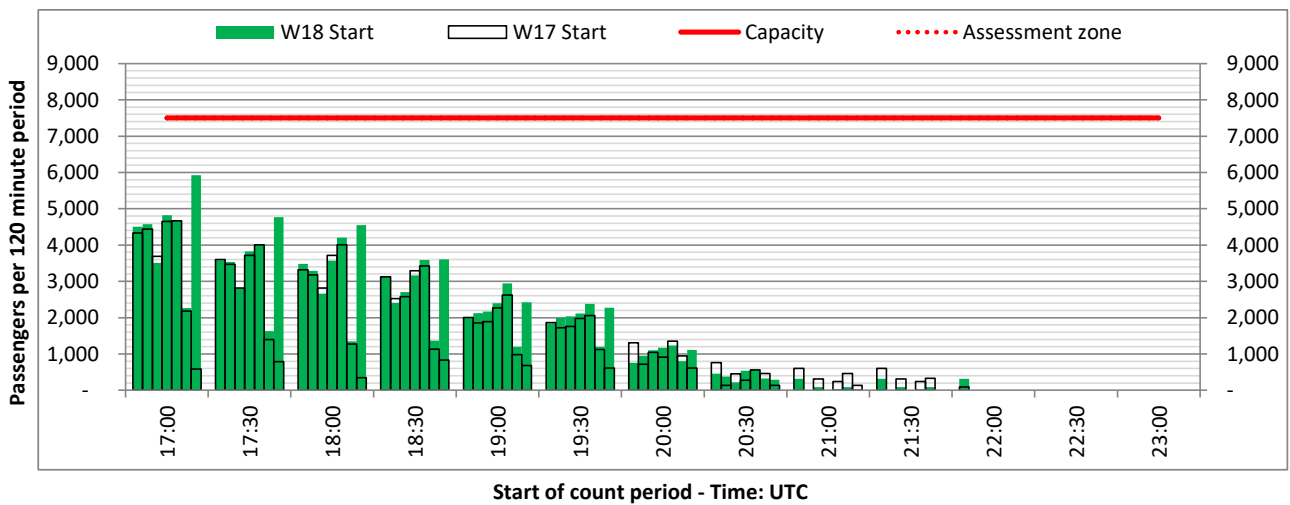
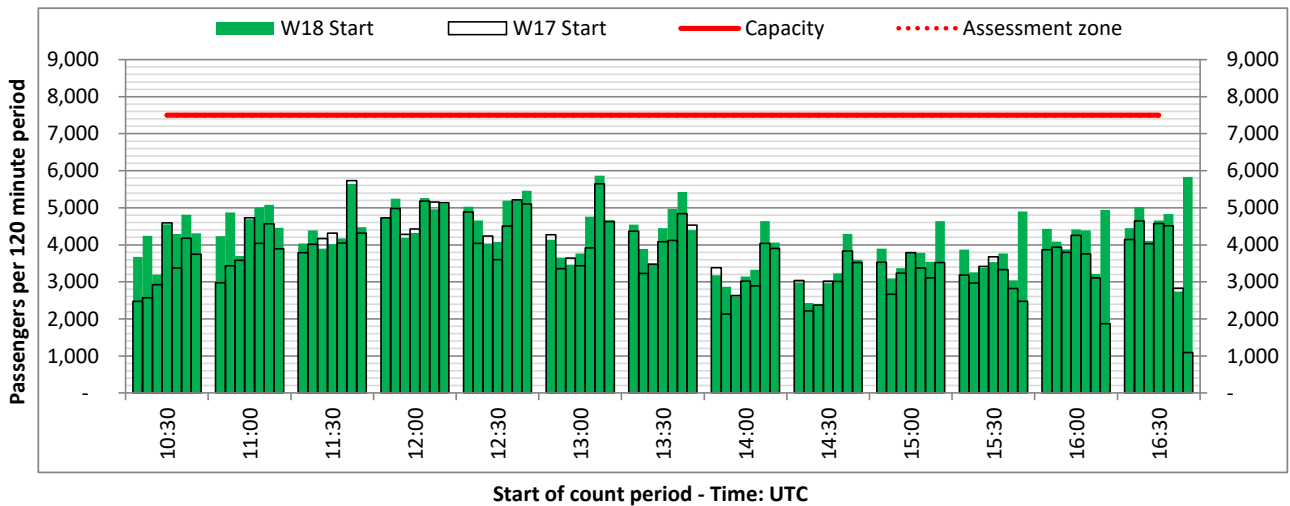
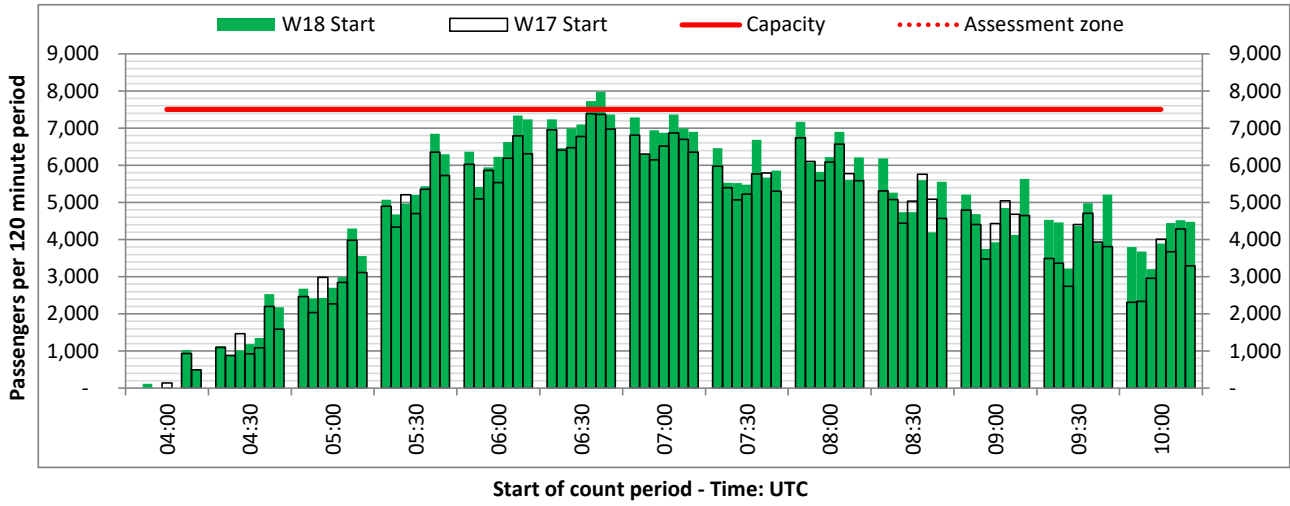
DEPARTURE - 120 minute count rolling every 30 mins (T120/30)



Terminals: 2D 2I

Operators: All Operators

Days: 1234567



Peak Week - Passengers Histogram

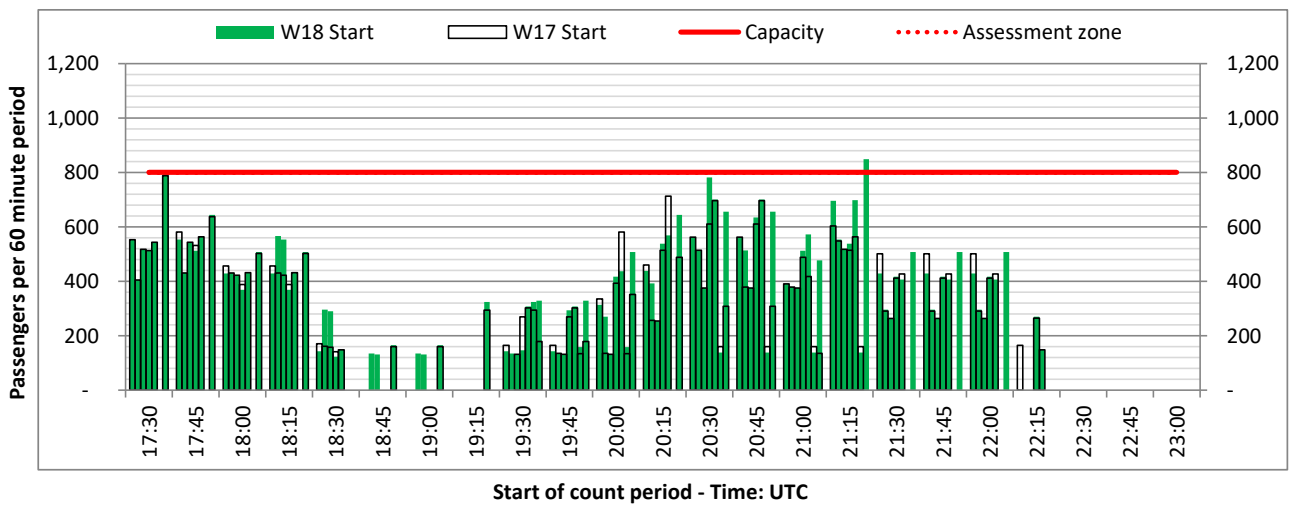
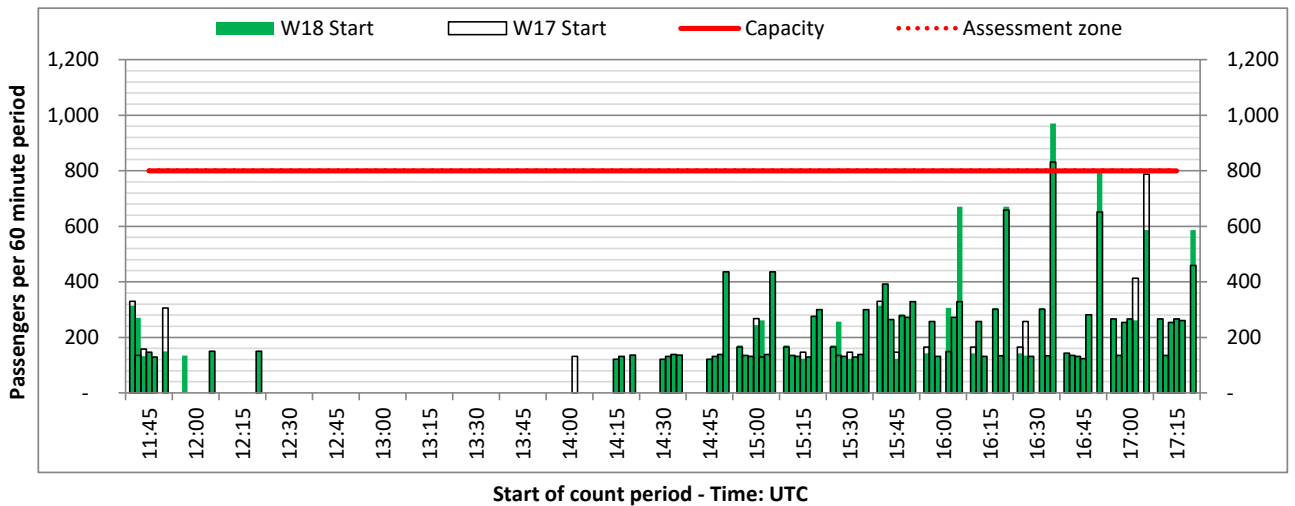
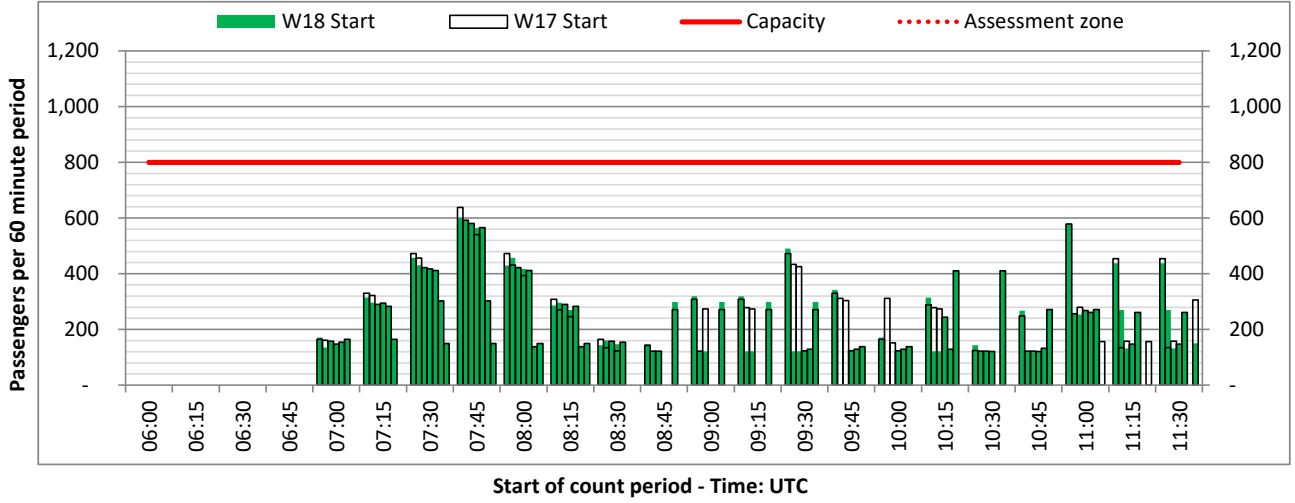
ARRIVAL - 60 minute count rolling every 15 mins (T60/15)



Terminals: 2D

Operators: All Operators

Days: 1234567



Peak Week - Passengers Histogram

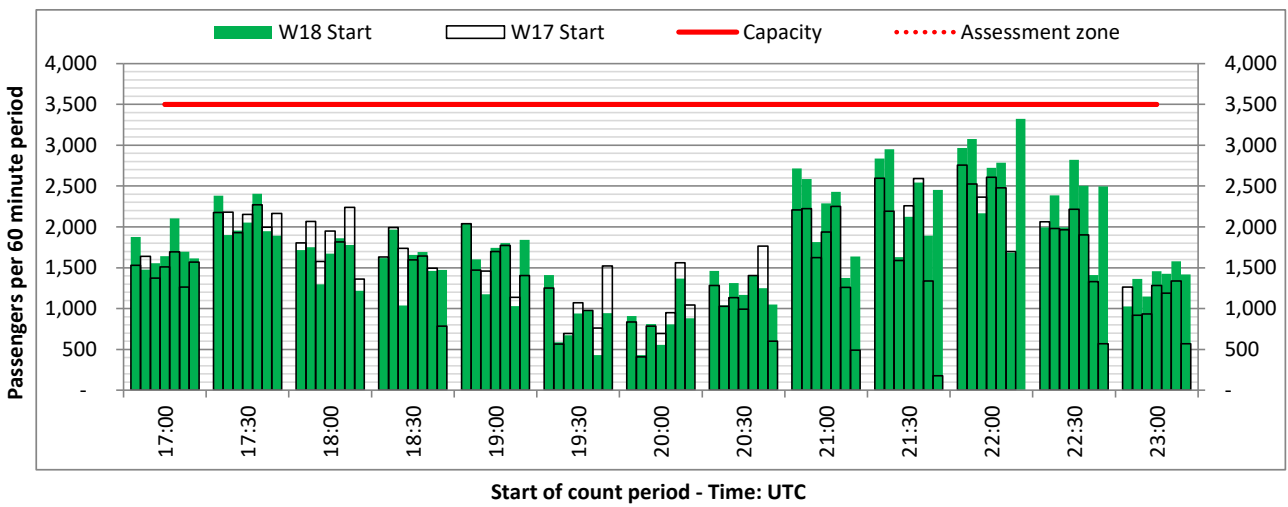
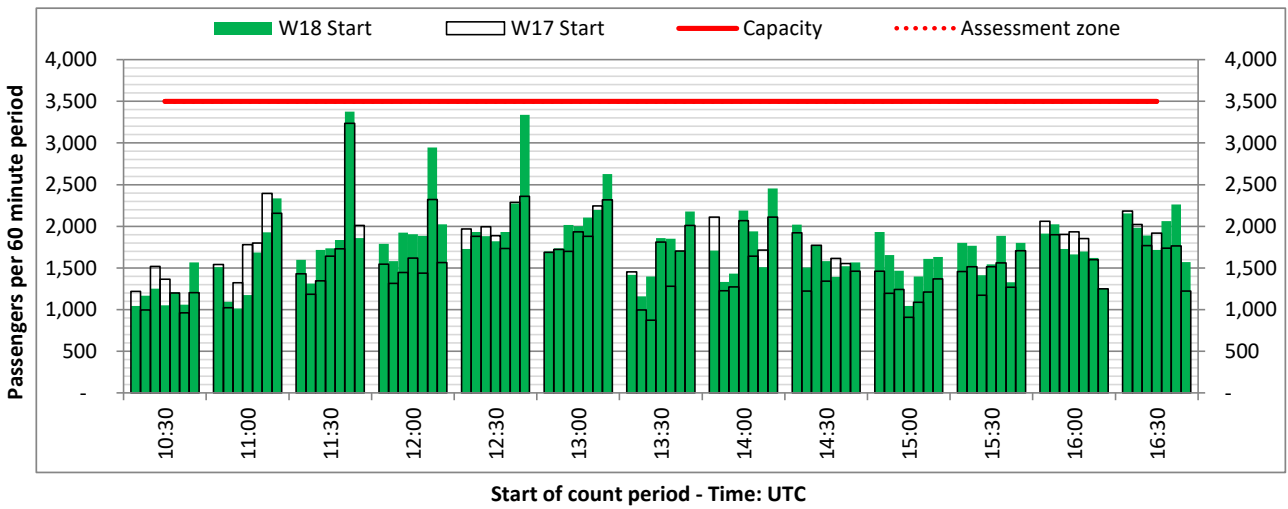
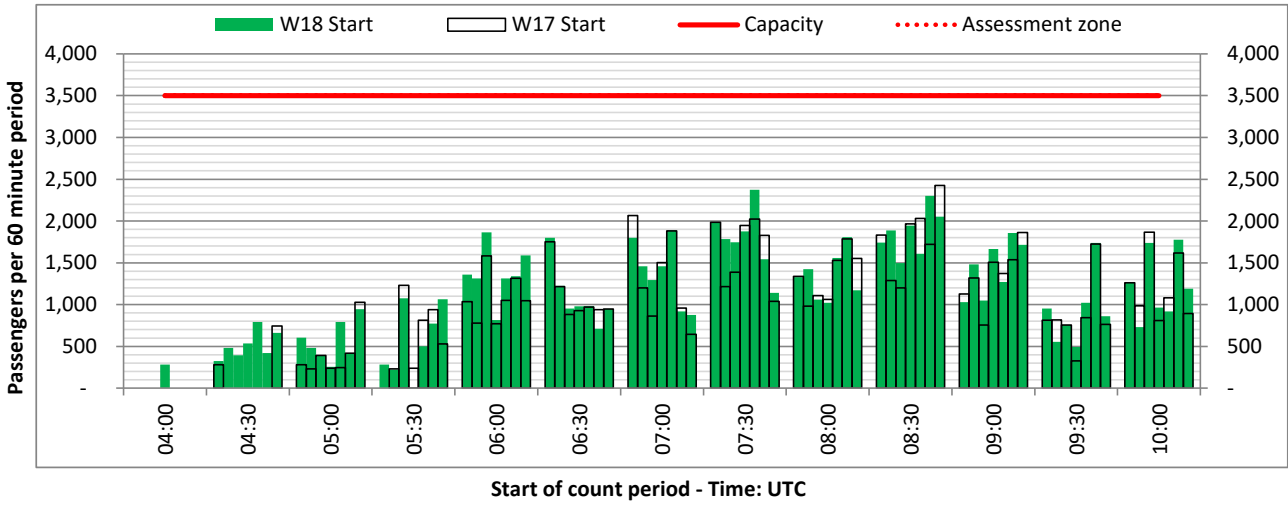
ARRIVAL - 60 minute count rolling every 30 mins (T60/30)



Terminals: 2I

Operators: All Operators

Days: 1234567



Peak Week - Passengers Histogram

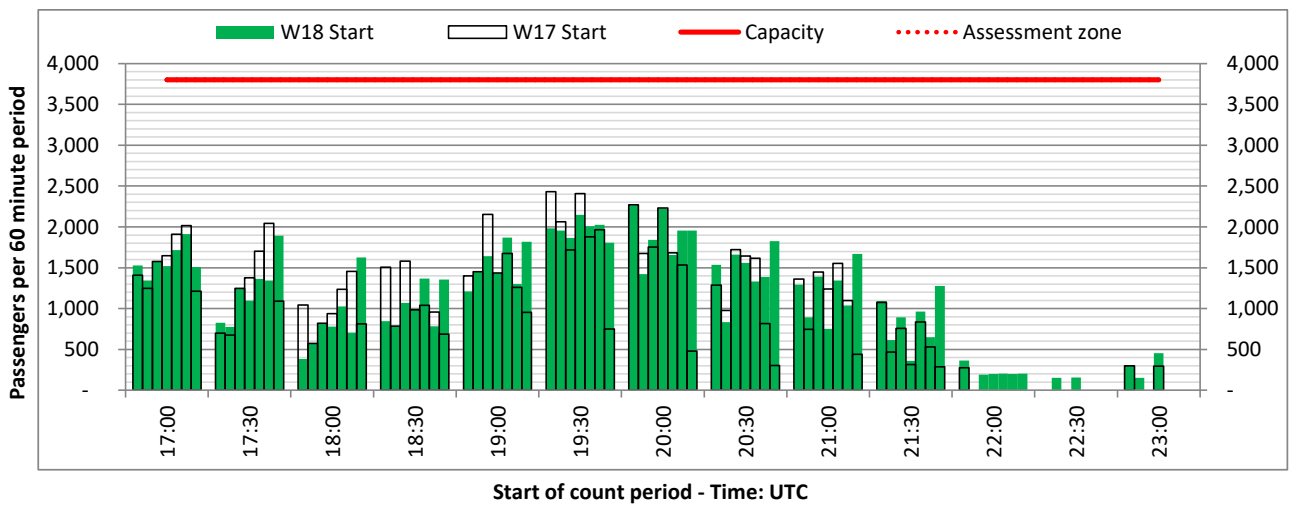
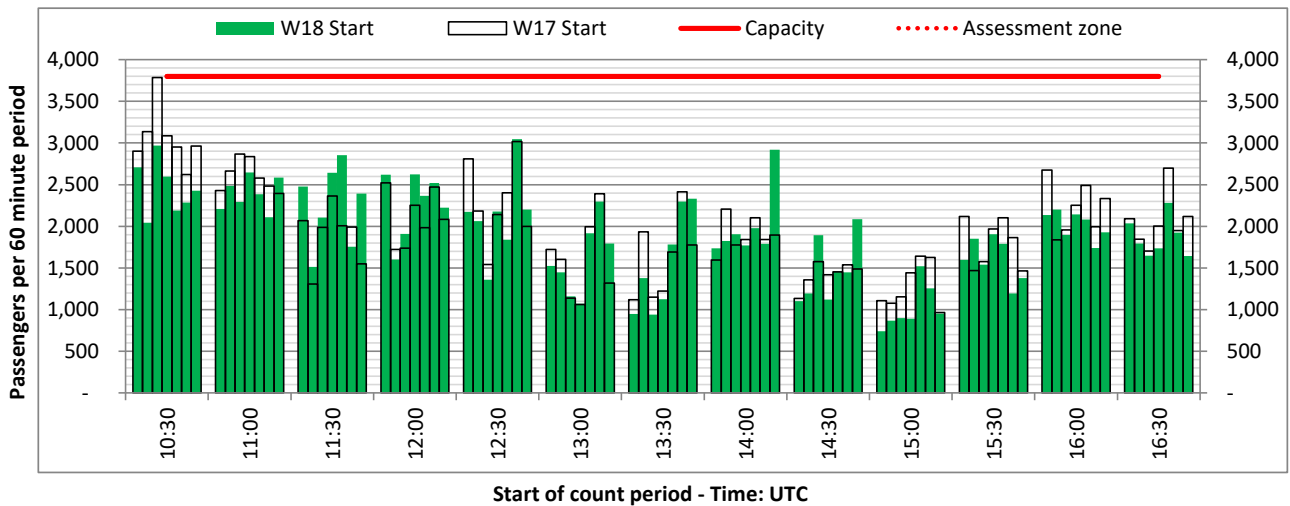
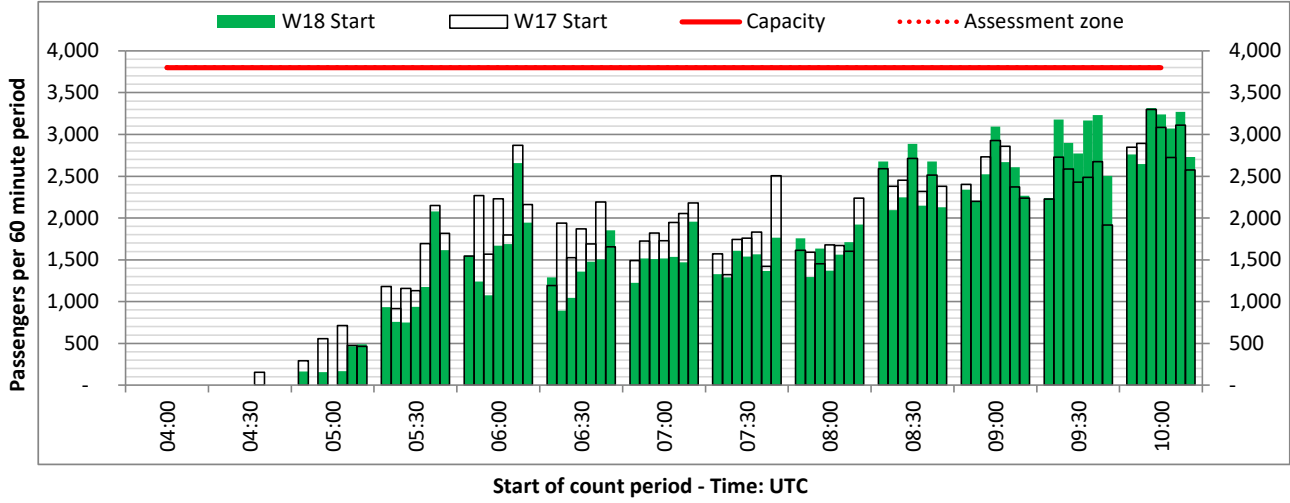
DEPARTURE - 60 minute count rolling every 30 mins (T60/30)



Terminals: 1D 1I

Operators: All Operators

Days: 1234567



Peak Week - Passengers Histogram

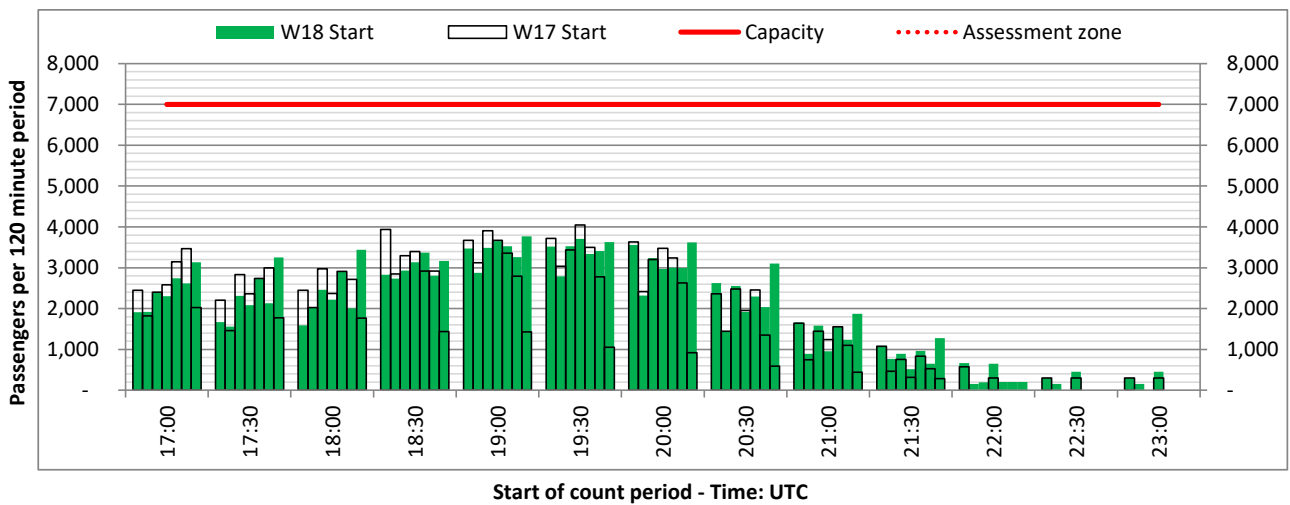
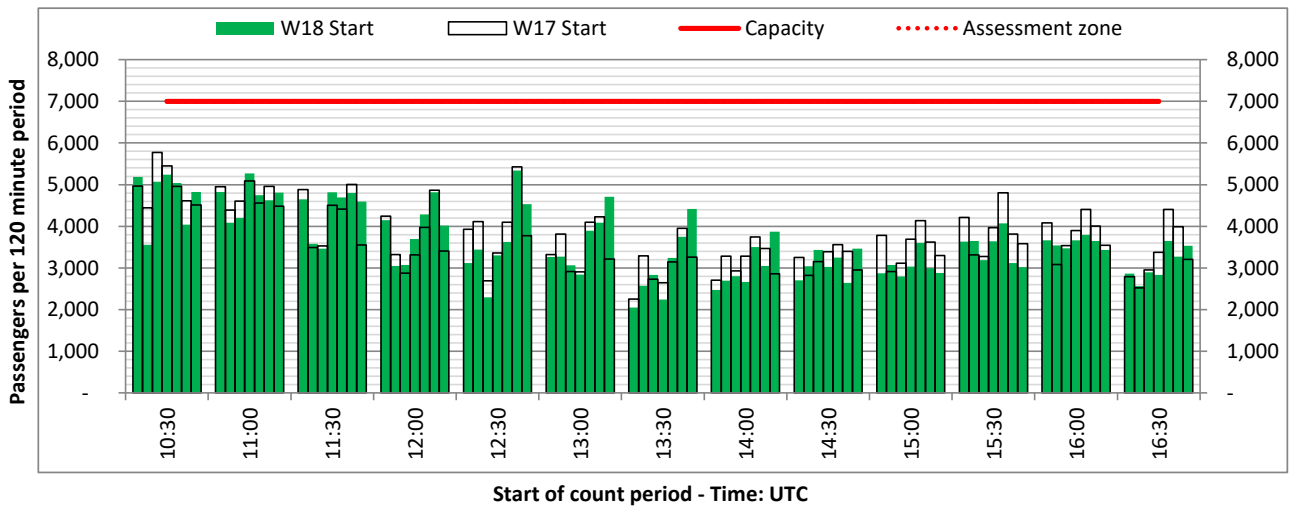
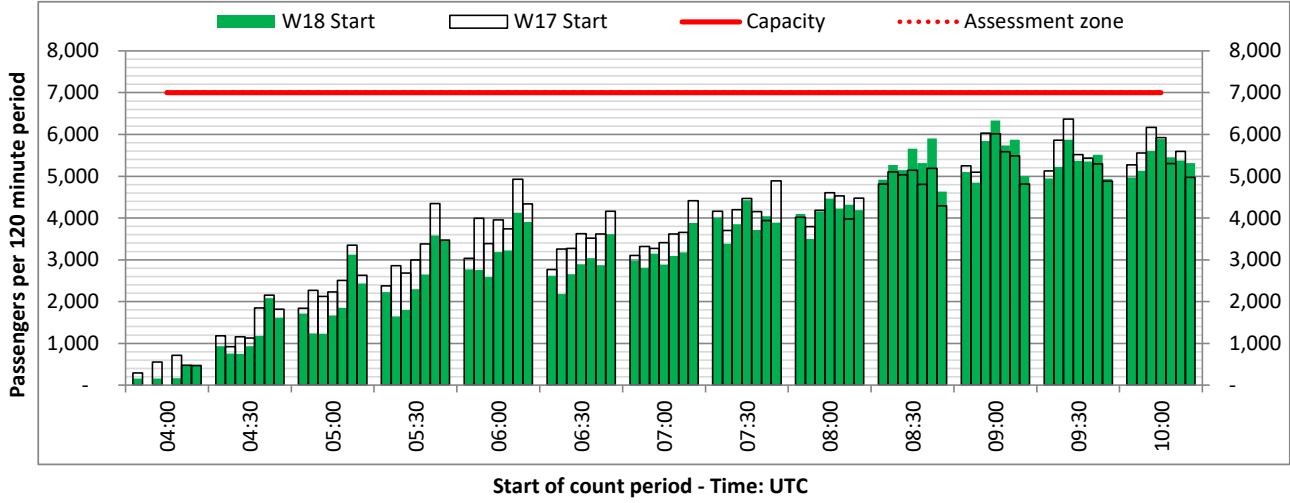
DEPARTURE - 120 minute count rolling every 30 mins (T120/30)



Terminals: 1D 1I

Operators: All Operators

Days: 1234567



Peak Week - Passengers Histogram

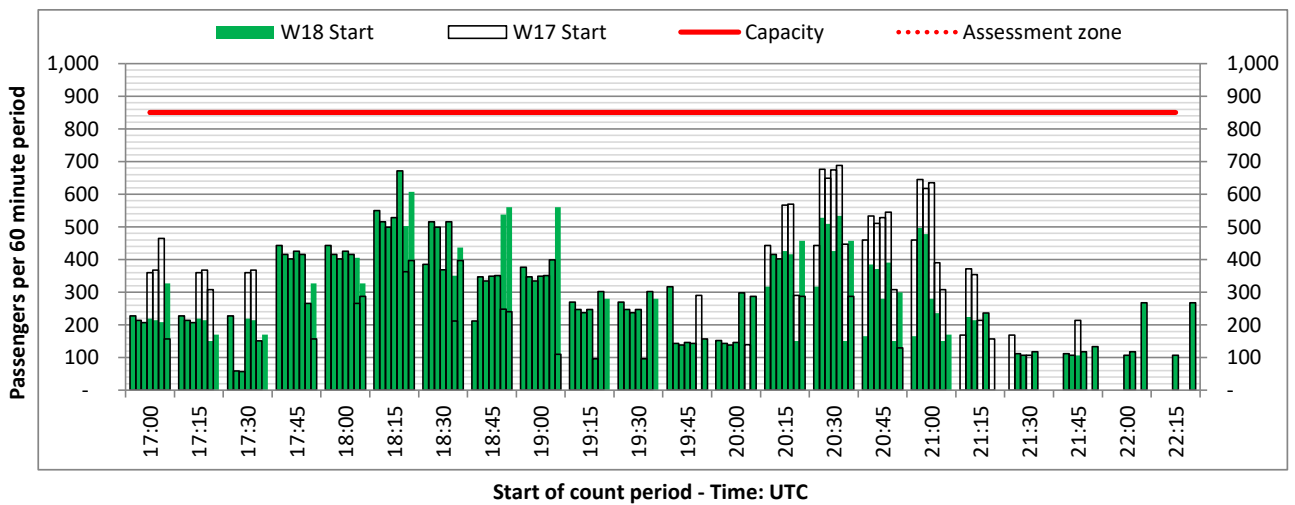
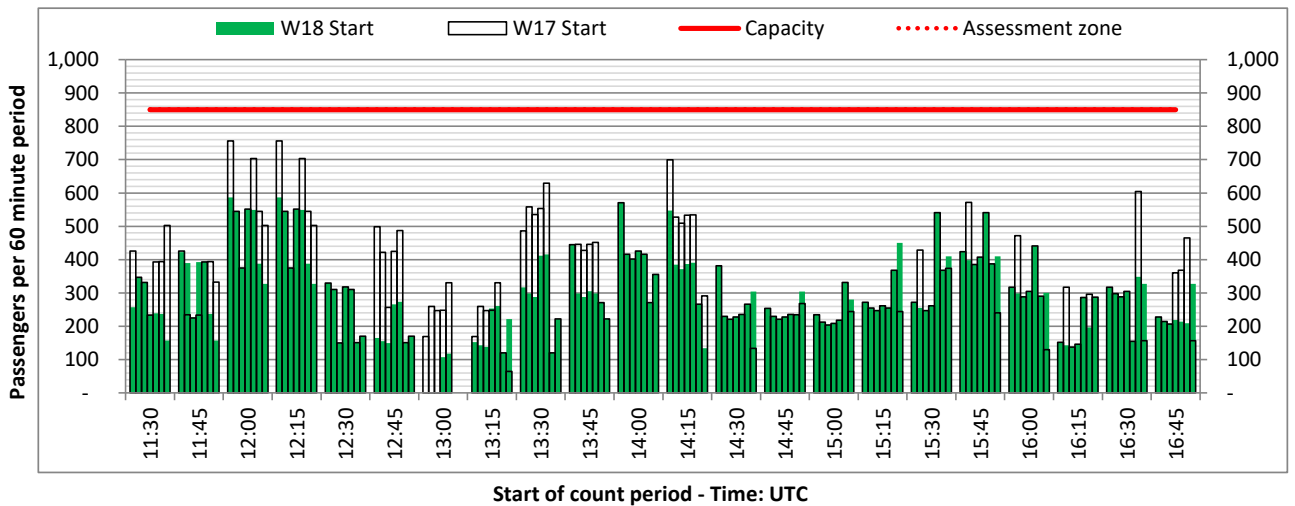
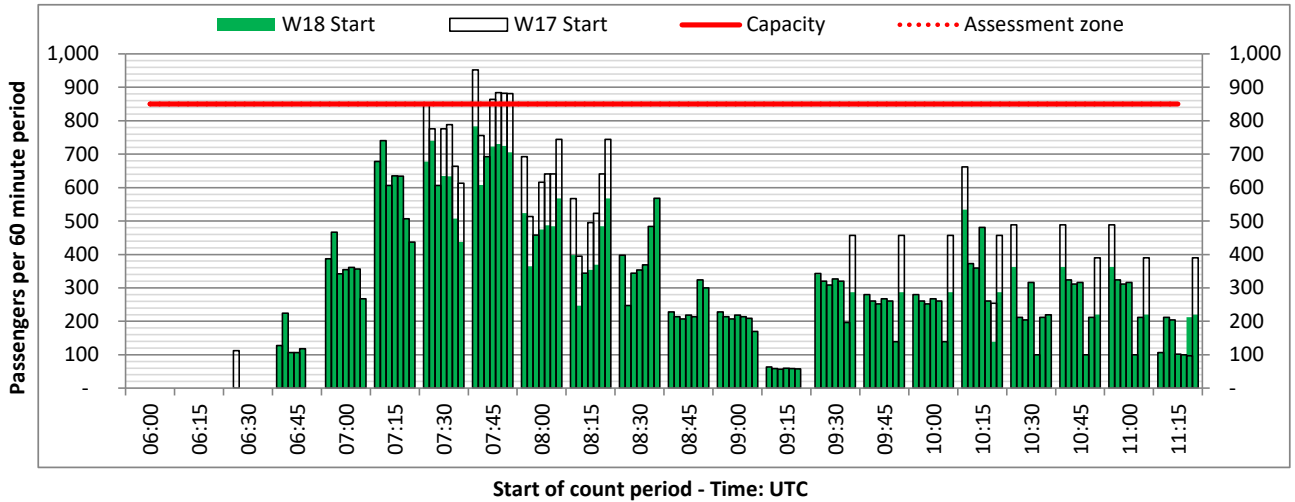
ARRIVAL - 60 minute count rolling every 15 mins (T60/15)



Terminals: 1D

Operators: All Operators

Days: 1234567



Peak Week - Passengers Histogram

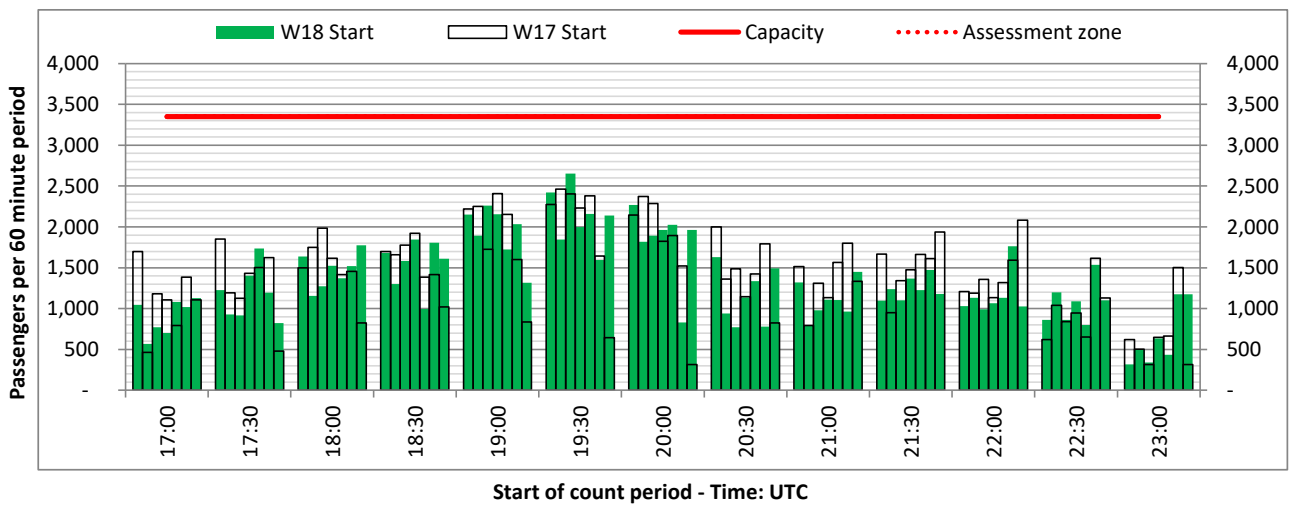
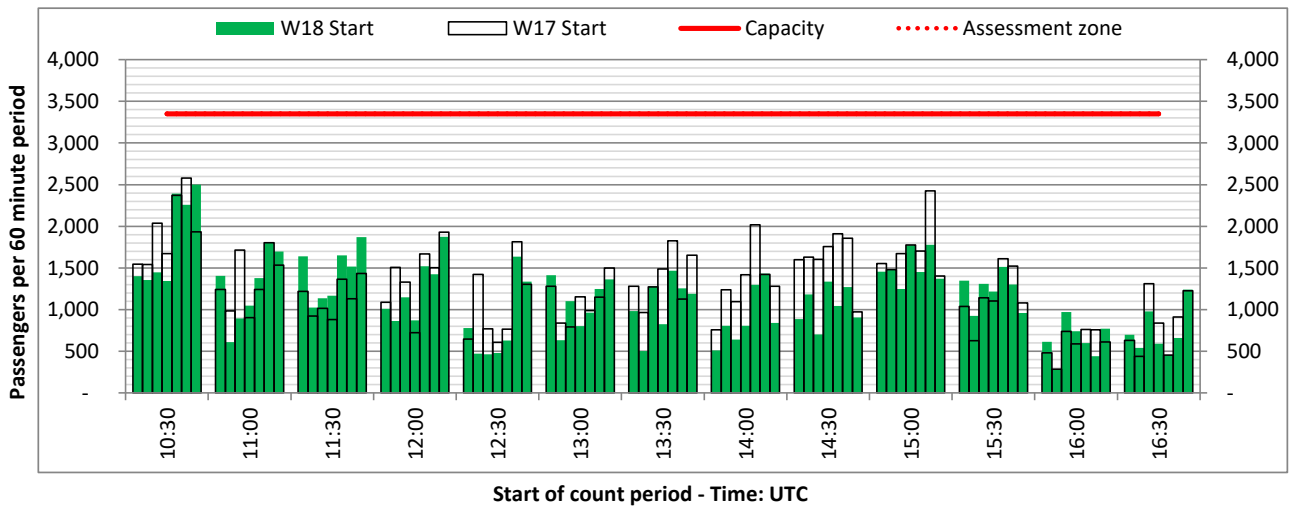
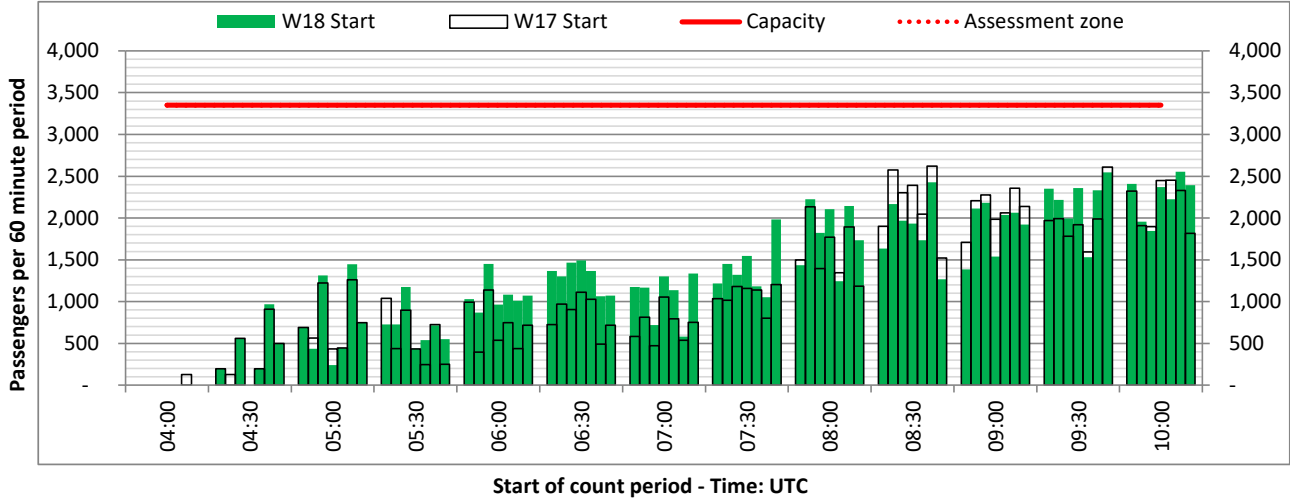
ARRIVAL - 60 minute count rolling every 30 mins (T60/30)



Terminals: 11

Operators: All Operators

Days: 1234567



Air Transport Movement (ATM)	Any aircraft movement which is either a scheduled or chartered passenger or cargo flight.
Common Travel Area (CTA)	Origin or Destination is in Republic of Ireland or the Channel Islands.
Demand	Unconstrained demand before any schedule adjustments have been made.
"Fill-in"	These are gaps in a historic series of slots which the carrier requests to "Fill-in" at Initial Submissions - Fill-ins will be recognisably part of the historic series and will have the same flight details to qualify as a "Fill-in".
Hist (SHL)	Snapshot of historic schedule rolled over from end of the previous equivalent season - as advised to airlines in the SHLs.
ICAO Size A	Aircraft with wingspan between 0.00m - 14.99m.
ICAO Size B	Aircraft with wingspan between 15.00m - 23.99m.
ICAO Size C	Aircraft with wingspan between 24.00m - 35.99m.
ICAO Size D	Aircraft with wingspan between 36.00m - 51.99m.
ICAO Size E	Aircraft with wingspan between 52.00m - 64.99m.
ICAO Size F	Aircraft with wingspan between 65.00m - 80.00m.
Init Coord	Snapshot of schedule immediately after Initial Coordination is completed - as advised to airlines in the SALs.
Passenger Air Transport Movement (PATM)	Any aircraft movement which is either a scheduled or chartered passenger flight.
Start	Snapshot of schedule shortly before the start of the scheduling season (exact date given below where used).
Time: Local	Times shown are in LOCAL time for the airport/scheduling season.
Time: UTC	Times shown are in Universal Time Constant (UTC).

Data snapshot descriptions

W17 Start	W17 schedule as cleared on Mon 23-Oct-17.
W17 End	W17 schedule as cleared on Sat 24-Mar-18.
W18 Start	W18 schedule as cleared on Tue 16-Oct-18.
Peak Week	Peak week for W17 is Mon 18-Dec-17 to Sun 24-Dec-17. Peak week for W18 is Mon 17-Dec-18 to Sun 23-Dec-18.

For ACL use

	Airport-Season-Branch-Resource	From date	To date	Time
Full Season Rep 1	LGW-W17-SOS Report-Standard	Sun 29-Oct-2017	Sat 24-Mar-2018	UTC
Full Season Rep 2	LGW-W17-Live-Standard	Sun 29-Oct-2017	Sat 24-Mar-2018	UTC
Full Season Rep 3	LGW-W18-SOS Report-Standard	Sun 28-Oct-2018	Sat 30-Mar-2019	UTC
	Airport-Season-Branch-Resource	From date	To date	Time
Peak Week Rep 1	LGW-W17-SOS Report-Standard	Mon 18-Dec-2017	Sun 24-Dec-2017	UTC
Peak Week Rep 2	LGW-W17-Live-Standard	Mon 18-Dec-2017	Sun 24-Dec-2017	UTC
Peak Week Rep 3	LGW-W18-SOS Report-Standard	Mon 17-Dec-2018	Sun 23-Dec-2018	UTC