

QUEENSTOWN INTERNATIONAL AIRPORT

ZQN

S18 Start of Season Report

Key Statistics	S17 Operated	S18 Season Start	Percentage Change	
Air Transport Movements	9,147	9,868	▲	8%
Total Seats	1,460,009	1,571,539	▲	8%
Seats per Passenger ATM	160	159		

Contents	Page
Airline Rank by ATM's and Seats	2
Aircraft Type Rankings by ATM's and Seats	3
Peak Week Departure Frequencies by Carrier	4
Destination Rankings by ATM's and Seats	5
Runway Peak Week Utilisation	6
Domestic Terminal Peak Week Utilisation	7
International Terminal Peak Week Utilisation	8
Total Terminal Peak Week Utilisation	9
Glossary	10

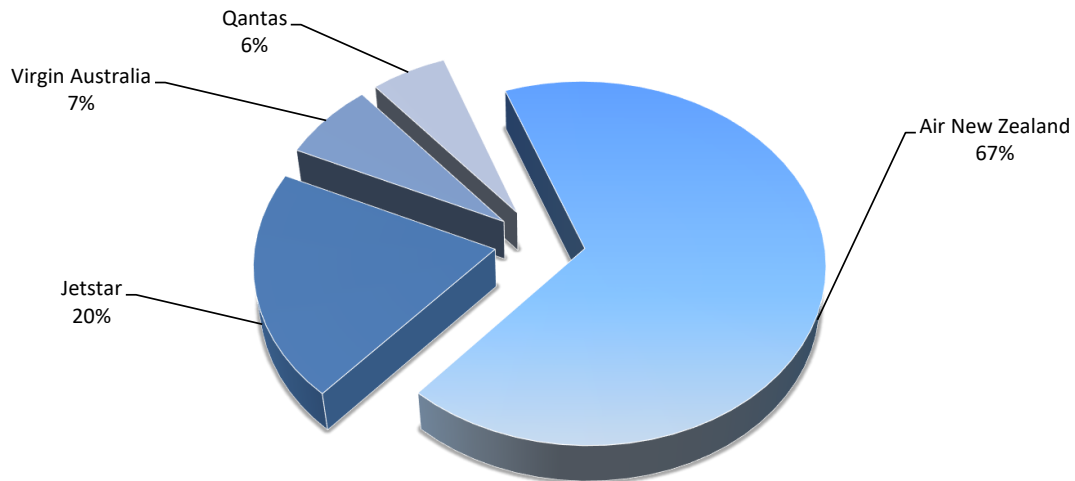
Data in this report is current as of 12 March 2018

No warranty whether expressed or implied as to the completeness, accuracy, fitness for purpose, or satisfactory quality is given by ACL regarding the information in this report, which is provided by third parties. Accordingly, ACL excludes all liability with regard to such data.

The contents of this report may not be reproduced without the written consent of ACL.

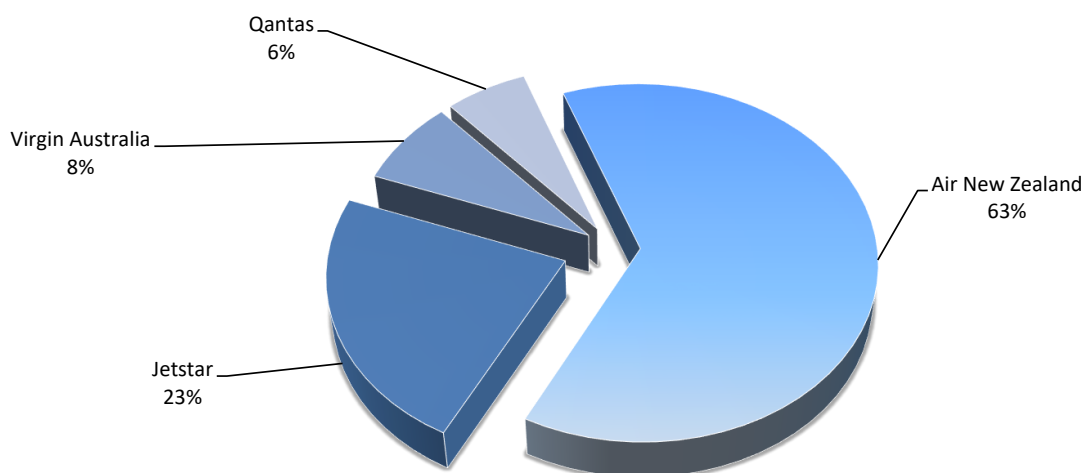
Airlines by Air Transport Movements (ATMs)

Airline	Movements
Air New Zealand	6,619
Jetstar	2,009
Virgin Australia	690
Qantas	550



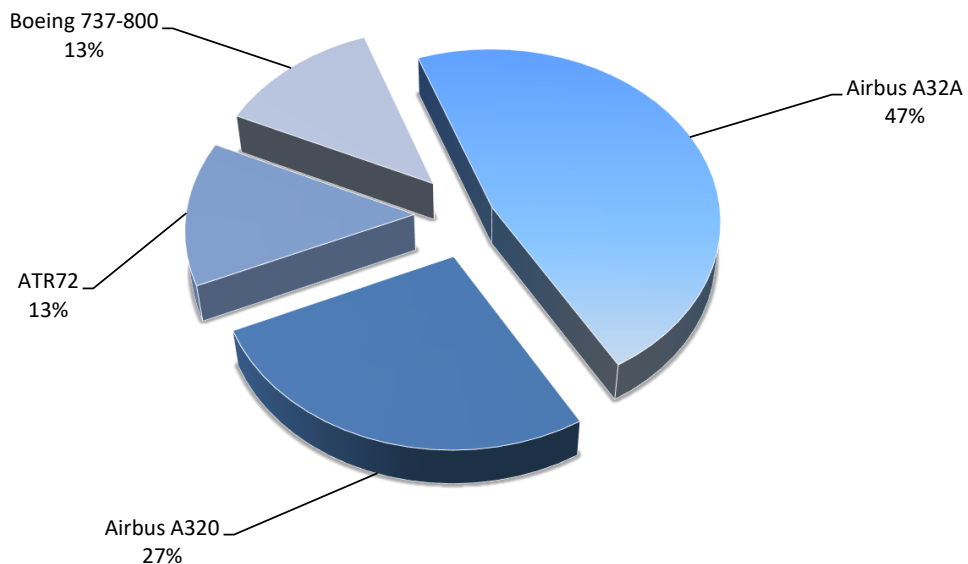
Airlines by Seats

Airline	Seats
Air New Zealand	992,779
Jetstar	361,620
Virgin Australia	121,440
Qantas	95,700



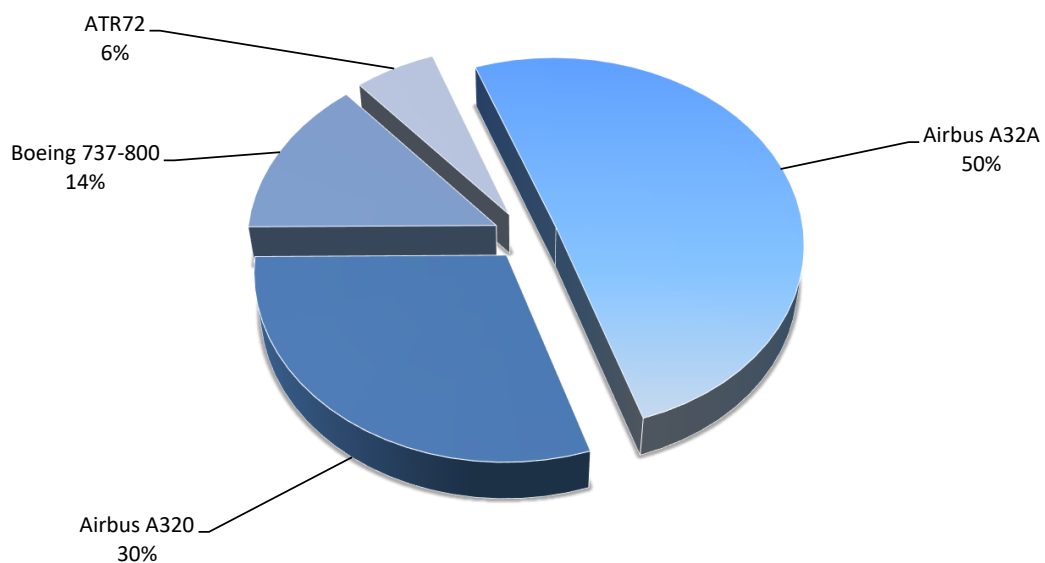
Aircraft Types by Air Transport Movements (ATMs)

Airline	Movements
Airbus A32A	4,641
Airbus A320	2,657
ATR72	1,330
Boeing 737-800	1,240



Aircraft types by seats

Airline	Seats
Airbus A32A	793,611
Airbus A320	470,484
Boeing 737-800	217,140
ATR72	90,304



QUEENSTOWN INTERNATIONAL AIRPORT

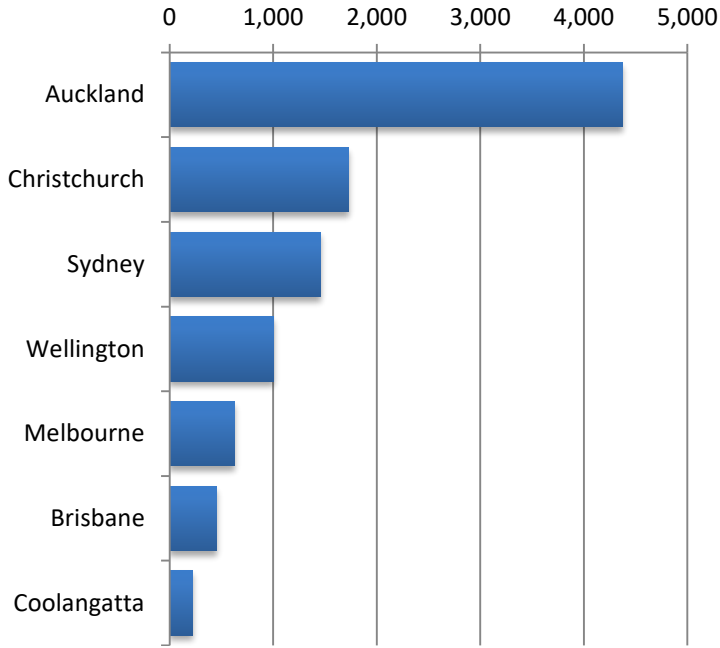
PEAK WEEK DEPARTURE FREQUENCIES - BY CARRIER

S17 10 to 16 July

S18 09 to 15 July

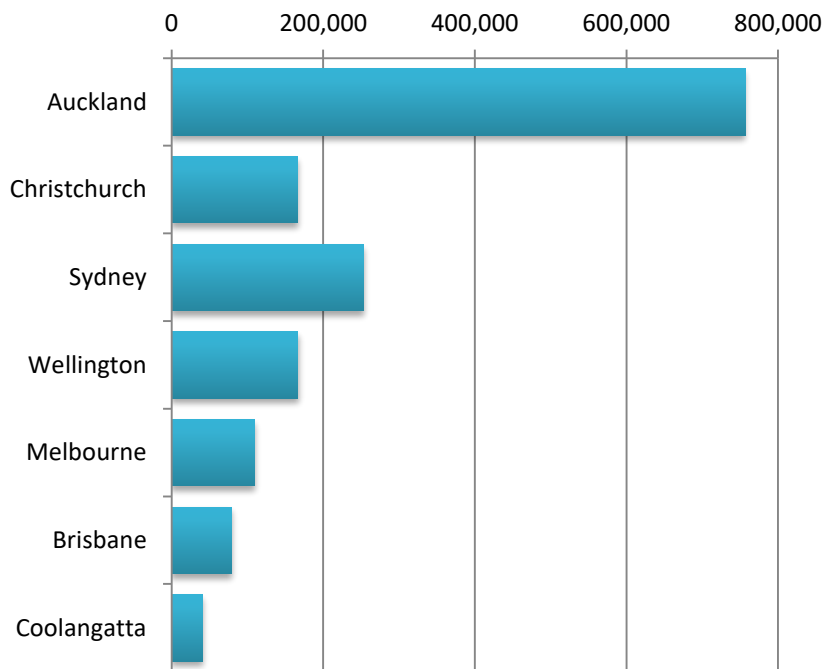
OPERATOR		AIRPORT		S17		S18		SEATS +/-		ATMS +/-	
				SEATS	ATMS	SEATS	ATMS				
JQ	Jetstar	AKL	Auckland International	2,700	15	2,880	16	180	1		
		MEL	Melbourne	1,260	7	1,260	7	0	0		
		OOL	Gold Coast Coolangatta	900	5	720	4	-180	-1		
		SYD	Sydney Kingsford Smith	1,260	7	1,260	7	0	0		
		WLG	Wellington International	0	0	540	3	540	3		
JQ Total				6,120	34	6,660	37	540	3		
NZ	Air New Zealand	AKL	Auckland International	9,918	58	10,944	64	1,026	6		
		CHC	Christchurch International	3,346	28	2,934	28	-412	0		
		MEL	Melbourne	1,512	9	1,512	9	0	0		
		SYD	Sydney Kingsford Smith	2,016	12	2,016	12	0	0		
		WLG	Wellington International	1,572	11	2,462	15	890	4		
NZ Total				18,364	118	19,868	128	1,504	10		
QF	Qantas	AKL	Auckland International	174	1	0	0	-174	-1		
		BNE	Brisbane International	348	2	348	2	0	0		
		SYD	Sydney Kingsford Smith	1,740	10	1,740	10	0	0		
QF Total				2,262	13	2,088	12	-174	-1		
VA	Virgin Australia	BNE	Brisbane International	1,760	10	1,936	11	176	1		
		SYD	Sydney Kingsford Smith	1,056	6	1,232	7	176	1		
VA Total				2,816	16	3,168	18	352	2		

Air Transport Movements by Destination



Destination	ATM'S
Auckland	4,375
Christchurch	1,732
Sydney	1,454
Wellington	1,006
Melbourne	626
Brisbane	450
Coolangatta	224

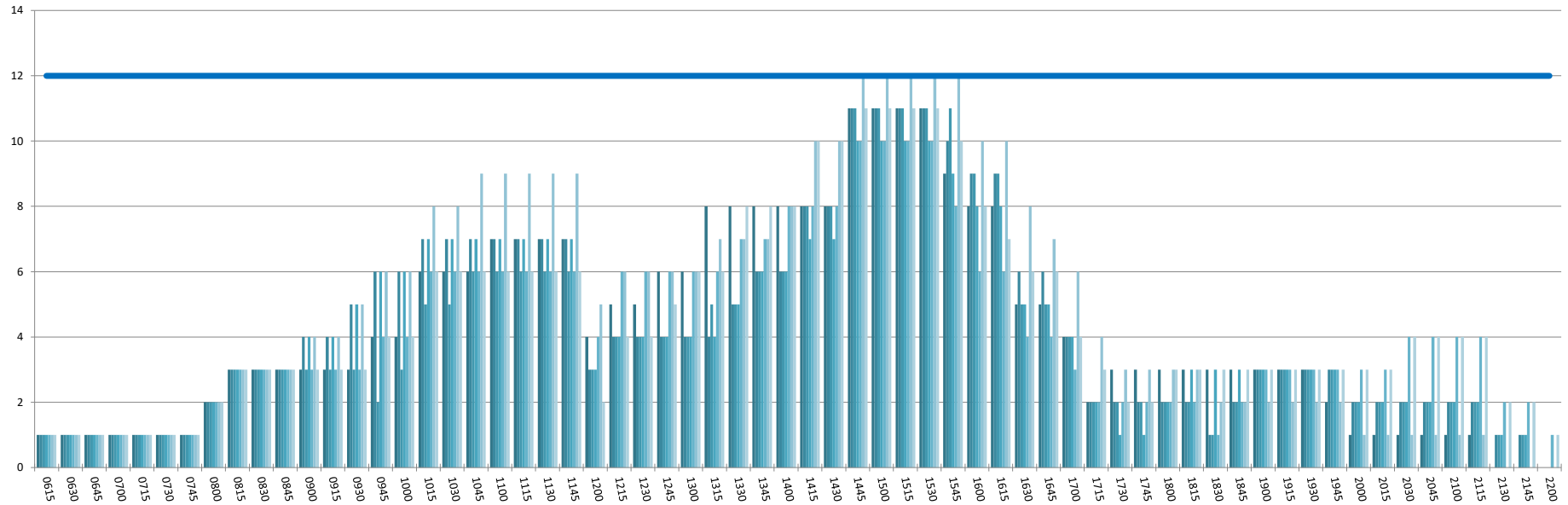
Air Transport Seats by Destination



Destination	SEATS
Auckland	756,479
Christchurch	166,250
Sydney	253,560
Wellington	166,690
Melbourne	109,104
Brisbane	79,068
Coolangatta	40,320

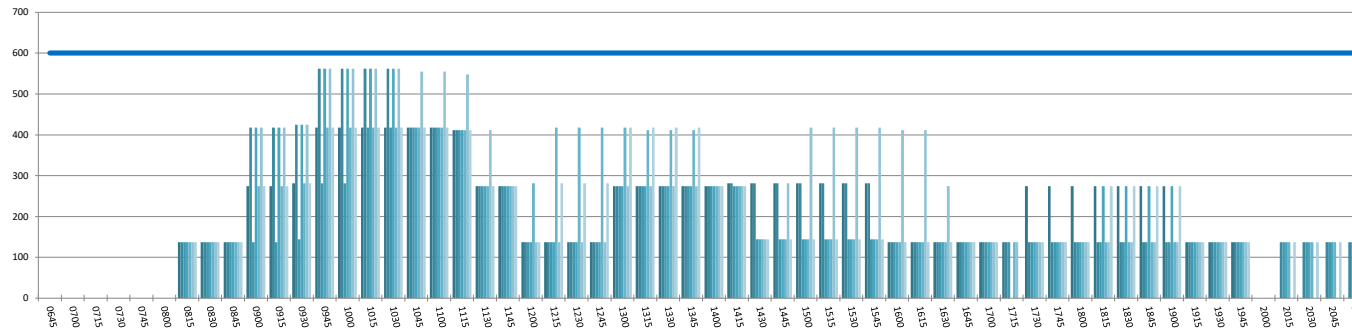
RUNWAY TOTAL UTILISATION PER 60 MINUTES (ROLLING EVERY 15 MINUTES)

Peak Week Movements per Hour - All times LOCAL



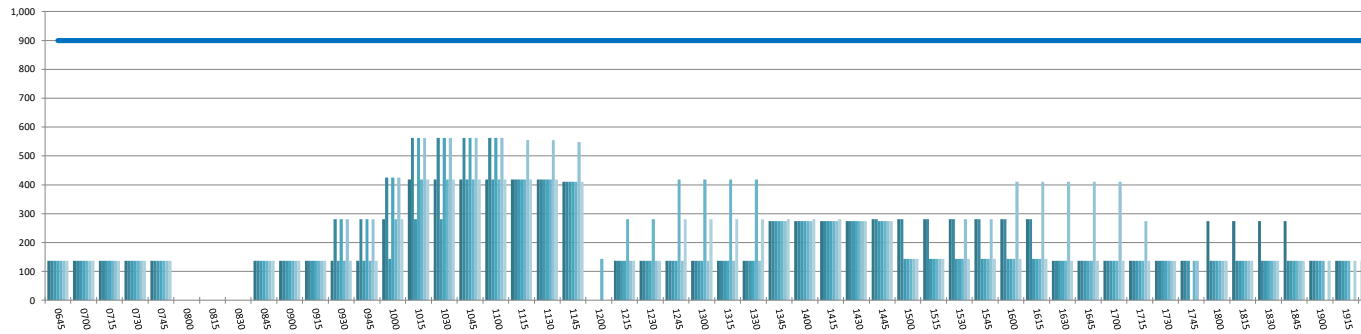
DOMESTIC TERMINAL ARRIVALS UTILISATION PER 60 MINUTES (ROLLING EVERY 15 MINUTES)

Peak Week Movements per Hour - All times LOCAL



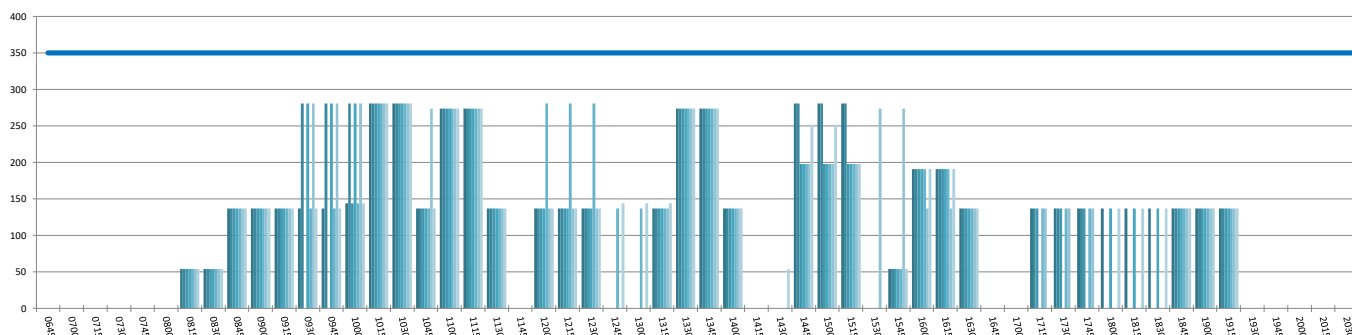
DOMESTIC TERMINAL DEPARTURES UTILISATION PER 60 MINUTES (ROLLING EVERY 15 MINUTES)

Peak Week Movements per Hour - All times LOCAL



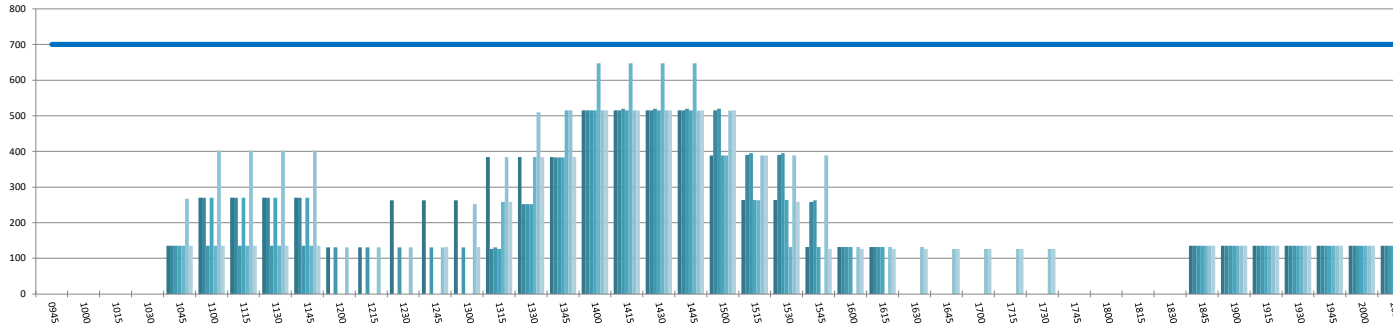
DOMESTIC TERMINAL ARRIVALS UTILISATION PER 30 MINUTES (ROLLING EVERY 15 MINUTES)

Peak Week Movements per Hour - All times LOCAL



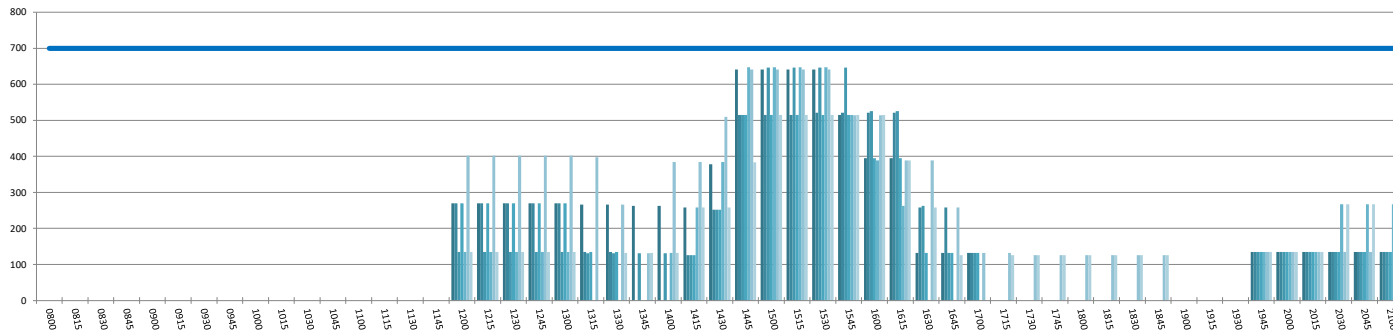
INTERNATIONAL TERMINAL ARRIVALS UTILISATION PER 60 MINUTES (ROLLING EVERY 15 MINUTES)

Peak Week Movements per Hour - All times LOCAL



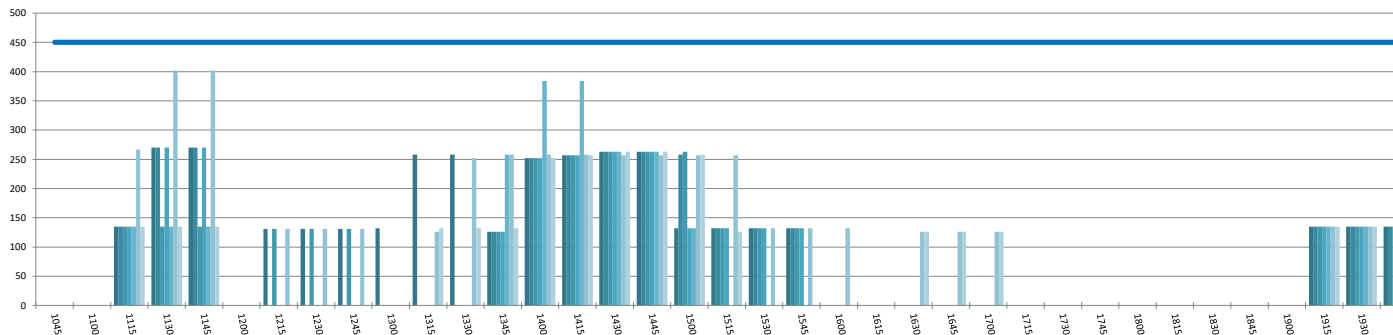
INTERNATIONAL TERMINAL DEPARTURES UTILISATION PER 60 MINUTES (ROLLING EVERY 15 MINUTES)

Peak Week Movements per Hour - All times LOCAL



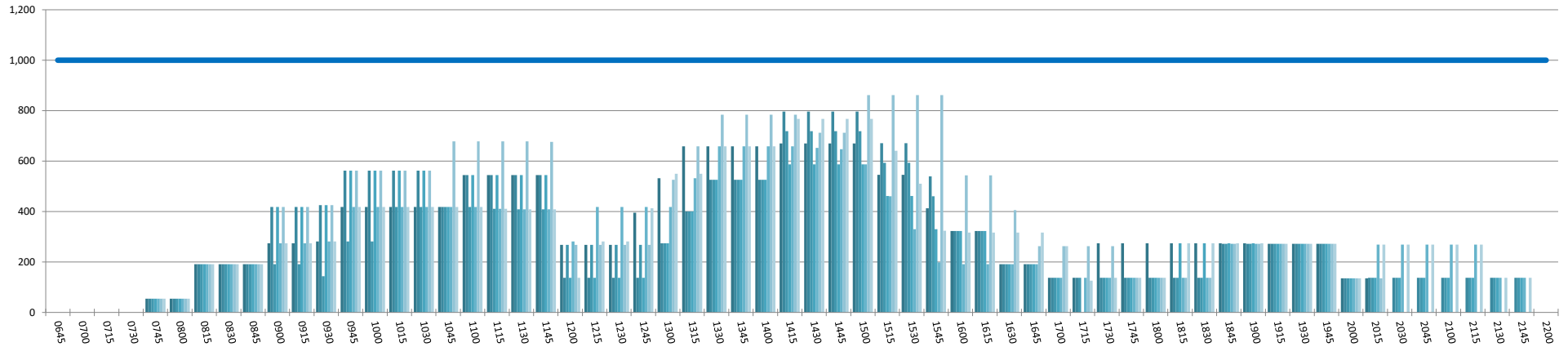
INTERNATIONAL TERMINAL ARRIVALS UTILISATION PER 30 MINUTES (ROLLING EVERY 15 MINUTES)

Peak Week Movements per Hour - All times LOCAL



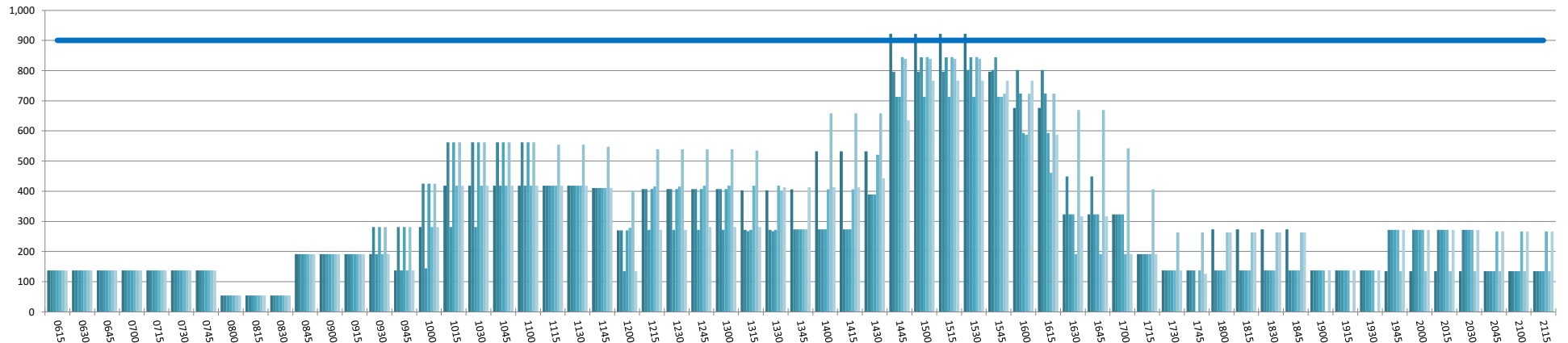
ENTIRE TERMINAL PASSENGER ARRIVALS UTILISATION PER 60 MINUTES (ROLLING EVERY 15 MINUTES)

Peak Week Movements per Hour - All times LOCAL



ENTIRE TERMINAL PASSENGER DEPARTURES UTILISATION PER 60 MINUTES (ROLLING EVERY 15 MINUTES)

Peak Week Movements per Hour - All times LOCAL



GLOSSARY OF TERMS

Air Transport Movement (ATM)	A scheduled or charter passenger or freight aircraft movement.
Allocation	The allocation of slots such that demand is constrained to fit within declared scheduling limits.
Common Travel Area (CTA)	Services to or from the Republic of Ireland and the Channel Islands.
Passenger ATM	A scheduled or charter <u>passenger</u> aircraft movement (ie, excluding all-cargo aircraft movements).
Scheduling Limits	Limiting parameters declared by the Airport Operator used in the coordination process.
Seats	The number of seats based on the aircraft configuration advised by the airline.
Peak Week	W15 09 to 15 July 2018
Data Snapshot	All data used for this report was as held 12 March 2018

GUIDE TO HISTOGRAMS

The histograms show the pattern of traffic by time of day against the appropriate scheduling limit. Each time period consist of seven columns representing the days-of-week, Monday through Sunday.