

WELLINGTON INTERNATIONAL AIRPORT WLG

S18 Start of Season Report (International Traffic)

Key Statistics	S17 Operated	S18 Season Start	Percentage Change
Air Transport Movements	3,779	3,771	▼ -0.2%
Total Seats	672,058	671,396	▼ -0.1%
Seats per Passenger ATM	178	178	

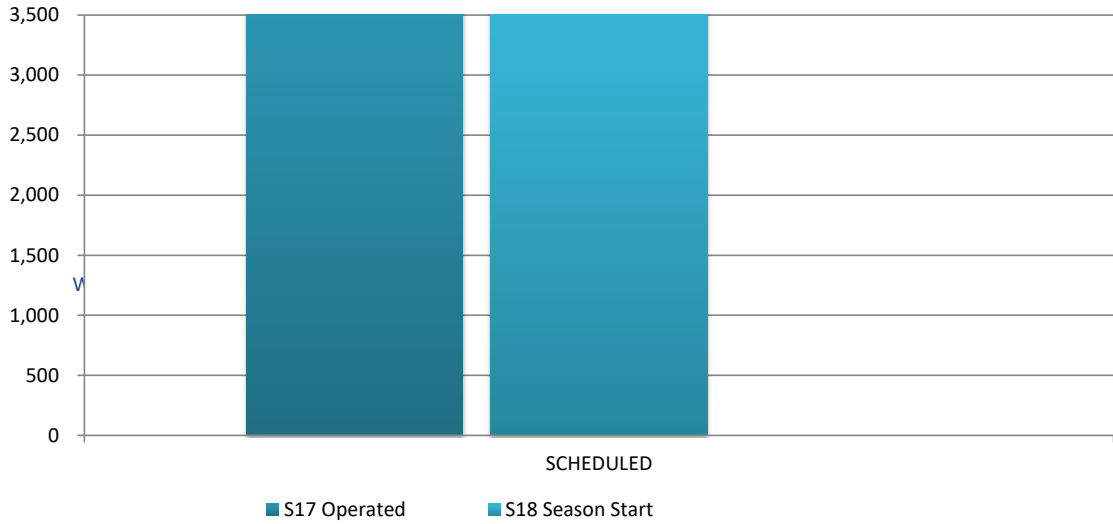
Contents	Page
Movements and Seats by Service Type	2
Peak Week Departure Frequencies by Carrier	3
Airlines by ATM's and Seats	4
Destinations by ATM's and Seats	5
Total Movements by Week	6
International Terminal - Passengers per 60 Minutes	7
Glossary	8

Data in this report is current as of 12 March 2018

No warranty whether expressed or implied as to the completeness, accuracy, fitness for purpose, or satisfactory quality is given by ACL regarding the information in this report, which is provided by third parties. Accordingly, ACL excludes all liability with regard to such data.

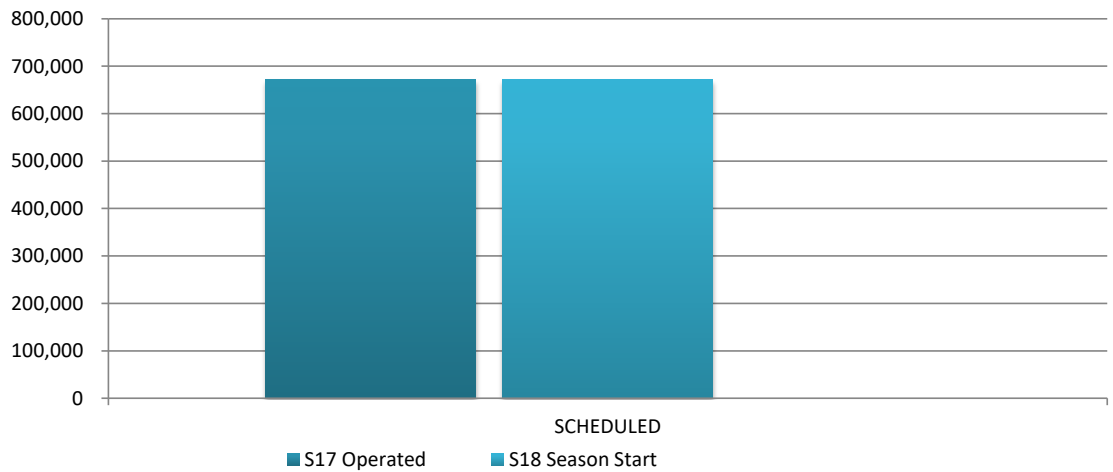
The contents of this report may not be reproduced without the written consent of ACL.

Full Season ATMs by Service Type



	S17 Operated	S18 Season Start	% CHANGE
SCHEDULED	3,779	3,771	▼ -0.2%
TOTAL	3,779	3,771	▼ -0.2%

Full Season Seats by Service Type



	S17 Operated	S18 Season Start	% CHANGE
SCHEDULED	672,058	671,396	▼ -0.1%
TOTAL	672,058	671,396	▼ -0.1%

WELLINGTON INTERNATIONAL

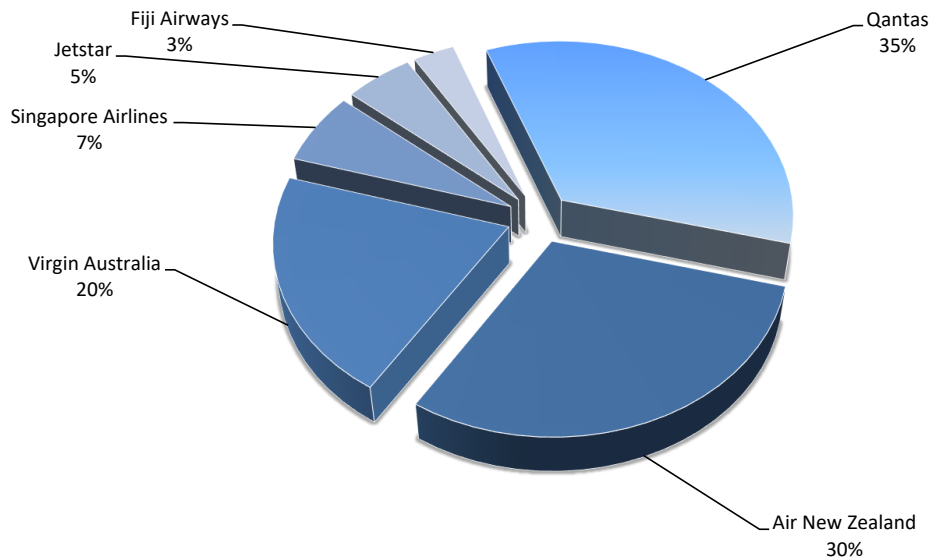
WEEK DEPARTURE FREQUENCIES - BY CARRIER

S18 09 to 15 July

	OPERATOR	AIRPORT		S17		S18		SEATS +/-	ATMS +/-
				SEATS	ATMS	SEATS	ATMS		
FJ	Fiji Airways	NAN	Nadi International	284	2	284	2	0	0
FJ Total				284	2	284	2	0	0
JQ	Jetstar	OOL	Gold Coast Coolangatta	360	2	540	3	180	1
JQ Total				360	2	540	3	180	1
NZ	Air New Zealand	MEL	Melbourne	1,008	6	1,008	6	0	0
		NAN	Nadi International	504	3	504	3	0	0
		SYD	Sydney Kingsford Smith	1,680	10	1,680	10	0	0
NZ Total				3,192	19	3,192	19	0	0
QF	Qantas	MEL	Melbourne	1,218	7	1,218	7	0	0
		SYD	Sydney Kingsford Smith	2,436	14	2,436	14	0	0
QF Total				3,654	21	3,654	21	0	0
SQ	Singapore Airlines	SIN	Singapore Changi	1,064	4	1,064	4	0	0
SQ Total				1,064	4	1,064	4	0	0
VA	Virgin Australia	BNE	Brisbane International	2,288	13	2,288	13	0	0
VA Total				2,288	13	2,288	13	0	0

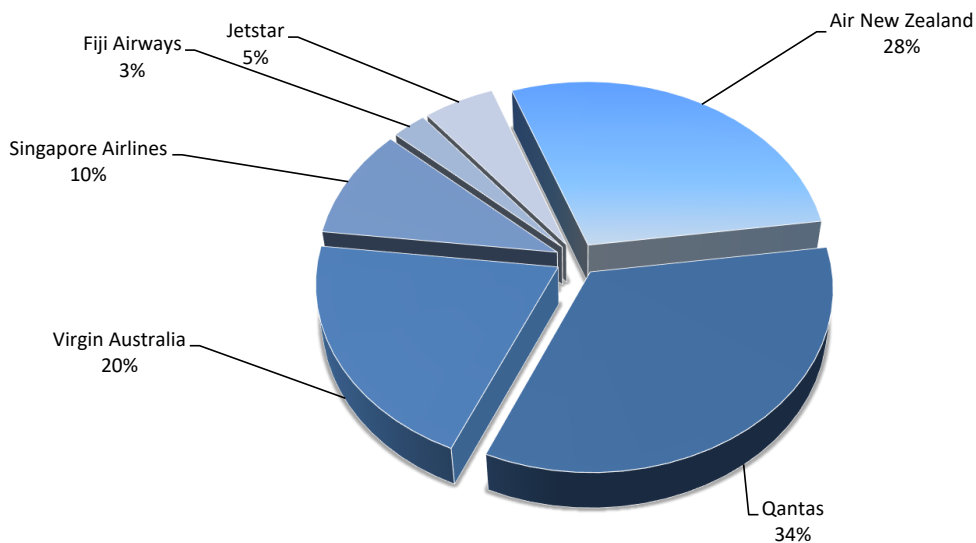
Airlines by Air Transport Movements (ATMs)

Airline	NS18 Movements	NS17	Diff
Qantas	1,302	1,315	-1%
Air New Zealand	1,134	1,130	0%
Virgin Australia	774	800	-3%
Singapore Airlines	248	242	2%
Jetstar	195	178	10%
Fiji Airways	118	114	4%

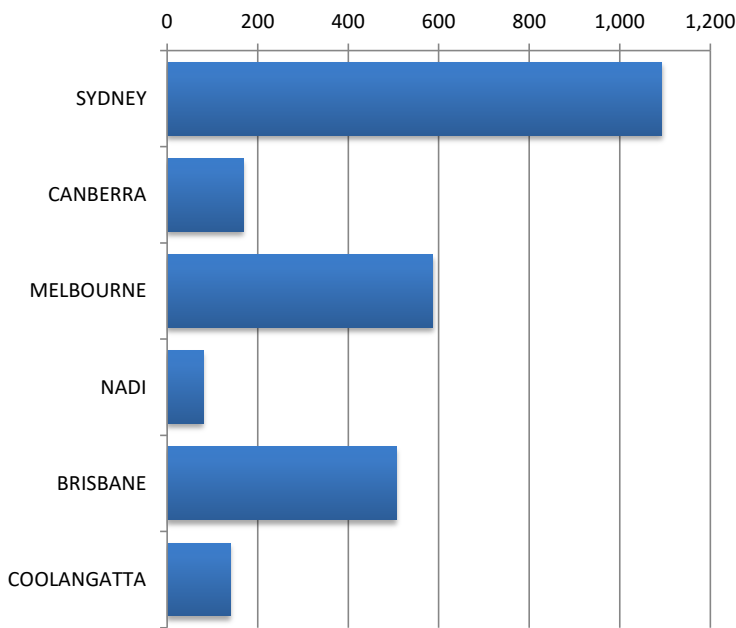


Airlines by Air Seats

Airline	NS18 Seats	NS17	Diff
Air New Zealand	190,512	189,840	0%
Qantas	226,548	228,810	-1%
Virgin Australia	136,224	140,800	-3%
Singapore Airlines	65,968	64,372	2%
Fiji Airways	17,044	16,556	3%
Jetstar	35,100	31,680	11%

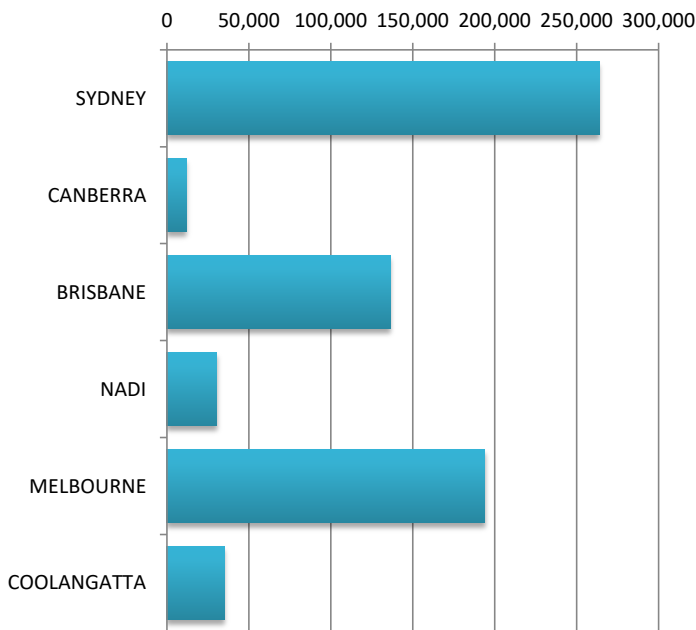


Air Transport Movements by Destination



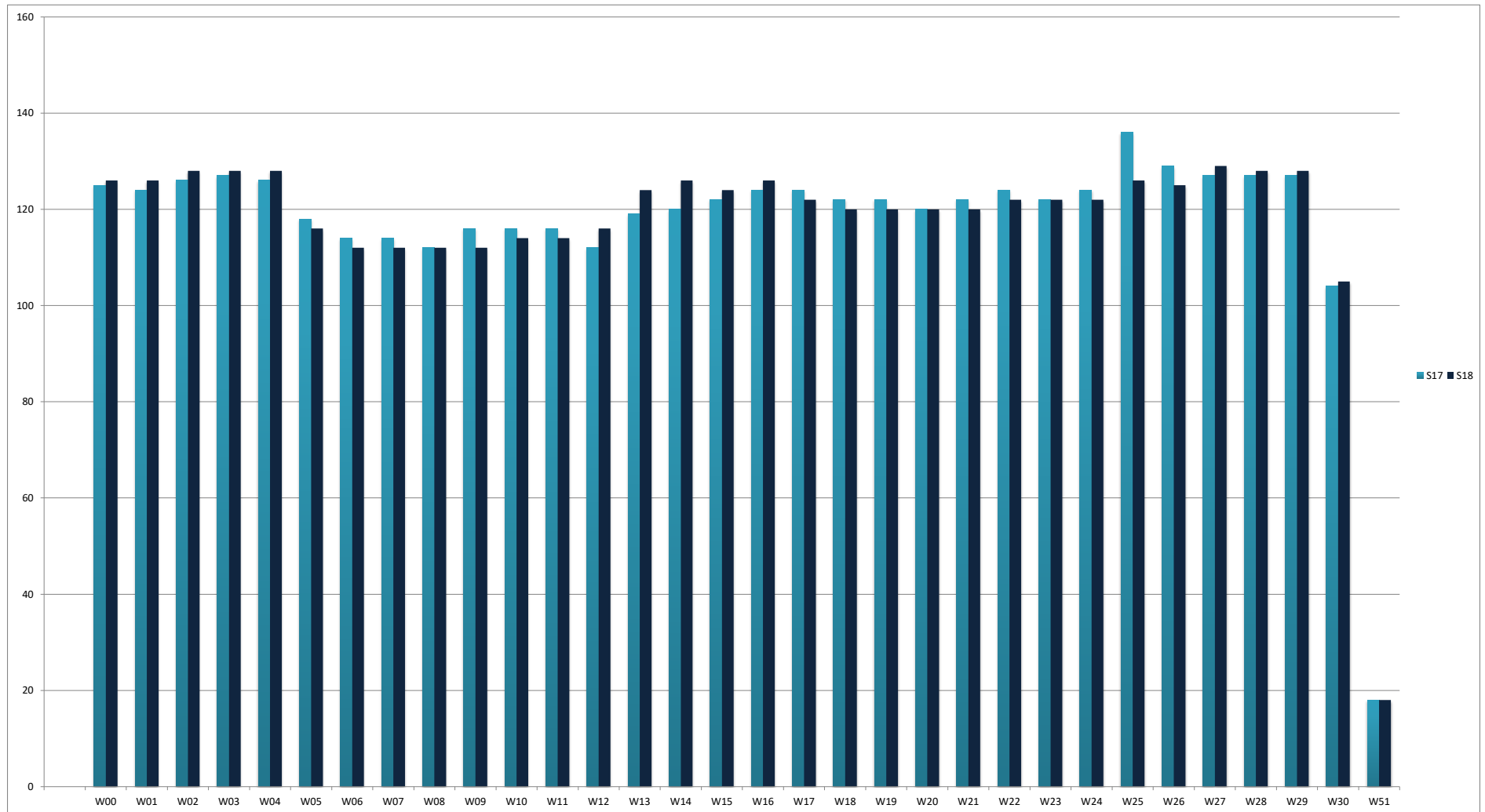
Destination	NS18 ATM'S	NS17	Diff
SYDNEY	1,093	1,104	0
CANBERRA	168	168	0%
MELBOURNE	587	752	-22%
NADI	80	68	18%
BRISBANE	506	512	-1%
COOLANGATTA	140	138	1%

Air Transport Seats by Destination



Destination	NS18 SEATS	NS17	Diff
SYDNEY	263,928	265,470	-1%
CANBERRA	11,704	64,372	-82%
BRISBANE	136,224	140,800	-3%
NADI	30,484	28,316	8%
MELBOURNE	193,956	141,420	37%
COOLANGATTA	35,100	31,680	11%

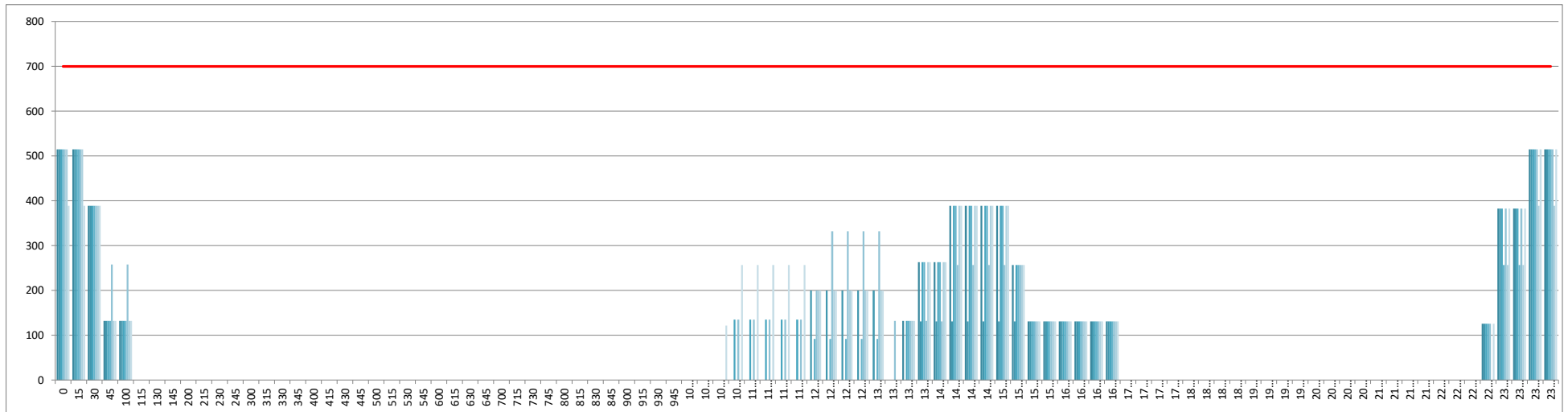
Air Transport Movements by Week for S17 vs S18 Season



INTERNATIONAL TERMINAL ARRIVALS (PER 60 MINUTES)

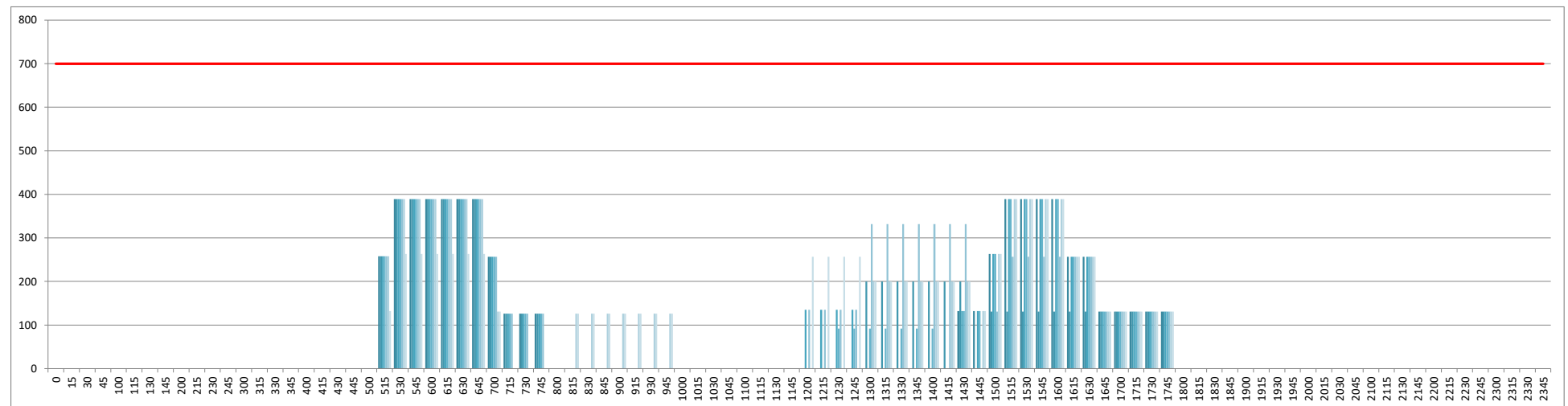
Week Movements per Hour - All times LOCAL

Demand Post IATA meeting



INTERNATIONAL TERMINAL DEPARTURES (PER 60 MINUTES)

Week Movements per Hour - All times LOCAL



GLOSSARY OF TERMS

Air Transport Movement (ATM)	A scheduled or charter passenger or freight aircraft movement.
Allocation	The allocation of slots such that demand is constrained to fit within declared scheduling limits.
Passenger ATM	A scheduled or charter <u>passenger</u> aircraft movement (ie, excluding all-cargo aircraft movements).
Scheduling Limits	Limiting parameters declared by the Airport Operator used in the coordination process.
Seats	The number of seats based on the aircraft configuration advised by the airline.
Average Week	W15 09 to 15 July 2018
Data Snapshot	All data used for this report was as held 12 March 2018

GUIDE TO HISTOGRAMS

The histograms show the pattern of traffic by time of day against the appropriate scheduling limit. Each time period consist of seven columns representing the days-of-week, Monday through Sunday.