

Dublin Airport (DUB)

Summer 2018 (S18)



Start of Season Report

Report Date: Mon 12-Mar-2018

Headlines

	S18 Start	vs. S17 Start	vs. S17 End
Total Air Transport Movements (Passenger & Freight)	147,851	▲ 6.5%	▲ 7.3%
Total Passenger Air Transport Movements	145,033	▲ 6.3%	▲ 7.4%
Total Passenger Air Transport Movement Seats	25,057,920	▲ 7.8%	▲ 9.1%
Average Seats per Passenger Air Transport Movement	173	▲ 1.5%	▲ 1.6%
Percentage of allocated slots cleared as requested (OK)	96.9%		

Contents

Page	Content
2	Runway Scheduling Limits
3	ATM Allocation by Operator (Full season and Peak Week Comparison)
4	Peak Week - Allocation and Slot Adjustment Distribution by Operator
5	Significant Route Changes
6	Full Season - ATM Analysis
7	Full Season - PATM Seats Analysis
8	Full Season - Terminal Analysis
9	Full Season - Aircraft Size Analysis
10	Full Season - Seasonality
11	Peak Week - Hourly Runway Demand
12	Peak Week - Hourly Runway Allocation
13	Peak Week - Hourly Runway Allocation Comparison (S18 Start vs. S17 Start)
14	Peak Week - Hourly Runway Allocation Comparison (S18 Start vs. S17 End)
15	Peak Week Histogram - Departure Passengers (T60/10) - 1 - All Operators
16	Peak Week Histogram - Departure Passengers (T60/10) - 2 - All Operators
17	Peak Week Histogram - Arrival Passengers (T60/10) - 1 - All Operators
18	Peak Week Histogram - Arrival Passengers (T60/10) - 2 - All Operators
19	Peak Week Histogram - Arrival Passengers (T60/10) - 2 - All Operators
20	Glossary

S17 scheduling season runs from Sun 26-Mar-2017 to Sat 28-Oct-2017 (217 days).

S18 scheduling season runs from Sun 25-Mar-2018 to Sat 27-Oct-2018 (217 days).

Disclaimer

No warranty whether expressed or implied as to the completeness, accuracy, fitness for purpose, or satisfactory quality is given by ACL regarding the information in this report, which is provided by third parties. Accordingly, ACL excludes all liability with regard to such data.

The contents of this report may not be reproduced without the written consent of ACL.

Peak Week - Allocation and Slot Adjustment Distribution by Operator

Schedule: S18 Start



Operator	S18 allocated ATMs	SLOT ADJUSTMENTS (MINUTES OFF REQUESTED TIME)														Requests with NO slot allocated
		0	5	10	15	20	25	30	35	40	45	50	55	60	>60	
Ad Hoc Operator	10	100.0%	0.0%	0.0%	0.0%	0.0%	0.0%	0.0%	0.0%	0.0%	0.0%	0.0%	0.0%	0.0%	0.0%	-
Aegean Airlines	8	100.0%	0.0%	0.0%	0.0%	0.0%	0.0%	0.0%	0.0%	0.0%	0.0%	0.0%	0.0%	0.0%	0.0%	-
Aer Lingus	1,807	96.4%	2.0%	0.7%	0.3%	0.1%	0.1%	0.1%	0.0%	0.0%	0.0%	0.0%	0.1%	0.0%	0.2%	-
Air Arabia Maroc	4	100.0%	0.0%	0.0%	0.0%	0.0%	0.0%	0.0%	0.0%	0.0%	0.0%	0.0%	0.0%	0.0%	0.0%	-
Air Canada	32	100.0%	0.0%	0.0%	0.0%	0.0%	0.0%	0.0%	0.0%	0.0%	0.0%	0.0%	0.0%	0.0%	0.0%	-
Air Europa	2	100.0%	0.0%	0.0%	0.0%	0.0%	0.0%	0.0%	0.0%	0.0%	0.0%	0.0%	0.0%	0.0%	0.0%	-
Air France	58	100.0%	0.0%	0.0%	0.0%	0.0%	0.0%	0.0%	0.0%	0.0%	0.0%	0.0%	0.0%	0.0%	0.0%	-
Air Moldova	8	100.0%	0.0%	0.0%	0.0%	0.0%	0.0%	0.0%	0.0%	0.0%	0.0%	0.0%	0.0%	0.0%	0.0%	-
Air Nostrum	5	40.0%	40.0%	20.0%	0.0%	0.0%	0.0%	0.0%	0.0%	0.0%	0.0%	0.0%	0.0%	0.0%	0.0%	-
Air Transat	10	80.0%	10.0%	10.0%	0.0%	0.0%	0.0%	0.0%	0.0%	0.0%	0.0%	0.0%	0.0%	0.0%	0.0%	-
Airest	10	100.0%	0.0%	0.0%	0.0%	0.0%	0.0%	0.0%	0.0%	0.0%	0.0%	0.0%	0.0%	0.0%	0.0%	-
AlbaStar	9	44.4%	0.0%	22.2%	0.0%	0.0%	0.0%	11.1%	0.0%	0.0%	0.0%	0.0%	0.0%	0.0%	22.2%	-
American Airlines	56	100.0%	0.0%	0.0%	0.0%	0.0%	0.0%	0.0%	0.0%	0.0%	0.0%	0.0%	0.0%	0.0%	0.0%	-
Arkia	2	50.0%	50.0%	0.0%	0.0%	0.0%	0.0%	0.0%	0.0%	0.0%	0.0%	0.0%	0.0%	0.0%	0.0%	-
ASL Airlines Belgium	10	100.0%	0.0%	0.0%	0.0%	0.0%	0.0%	0.0%	0.0%	0.0%	0.0%	0.0%	0.0%	0.0%	0.0%	-
ASL Airlines France	1	0.0%	0.0%	0.0%	0.0%	0.0%	0.0%	0.0%	0.0%	100.0%	0.0%	0.0%	0.0%	0.0%	0.0%	-
Blue Air	24	91.7%	0.0%	0.0%	0.0%	0.0%	0.0%	0.0%	0.0%	0.0%	0.0%	0.0%	0.0%	0.0%	8.3%	-
Bluebird Cargo	10	100.0%	0.0%	0.0%	0.0%	0.0%	0.0%	0.0%	0.0%	0.0%	0.0%	0.0%	0.0%	0.0%	0.0%	-
British Airways	158	100.0%	0.0%	0.0%	0.0%	0.0%	0.0%	0.0%	0.0%	0.0%	0.0%	0.0%	0.0%	0.0%	0.0%	-
Cathay Pacific	8	100.0%	0.0%	0.0%	0.0%	0.0%	0.0%	0.0%	0.0%	0.0%	0.0%	0.0%	0.0%	0.0%	0.0%	-
Cello Aviation	19	73.7%	10.5%	5.3%	0.0%	5.3%	0.0%	0.0%	0.0%	0.0%	0.0%	0.0%	0.0%	0.0%	5.3%	-
Cityjet	82	85.4%	11.0%	2.4%	1.2%	0.0%	0.0%	0.0%	0.0%	0.0%	0.0%	0.0%	0.0%	0.0%	0.0%	-
Cobalt Air	4	100.0%	0.0%	0.0%	0.0%	0.0%	0.0%	0.0%	0.0%	0.0%	0.0%	0.0%	0.0%	0.0%	0.0%	-
Croatia Airlines	4	75.0%	0.0%	0.0%	0.0%	0.0%	0.0%	0.0%	0.0%	25.0%	0.0%	0.0%	0.0%	0.0%	0.0%	-
Danish Air Transport	1	100.0%	0.0%	0.0%	0.0%	0.0%	0.0%	0.0%	0.0%	0.0%	0.0%	0.0%	0.0%	0.0%	0.0%	-
Delta Airlines	42	100.0%	0.0%	0.0%	0.0%	0.0%	0.0%	0.0%	0.0%	0.0%	0.0%	0.0%	0.0%	0.0%	0.0%	-
Emirates	28	100.0%	0.0%	0.0%	0.0%	0.0%	0.0%	0.0%	0.0%	0.0%	0.0%	0.0%	0.0%	0.0%	0.0%	-
Ethiopian Airlines	16	50.0%	37.5%	0.0%	0.0%	0.0%	0.0%	12.5%	0.0%	0.0%	0.0%	0.0%	0.0%	0.0%	0.0%	-
Ethihad Airways	28	100.0%	0.0%	0.0%	0.0%	0.0%	0.0%	0.0%	0.0%	0.0%	0.0%	0.0%	0.0%	0.0%	0.0%	-
European Air Transport (DHL)	16	100.0%	0.0%	0.0%	0.0%	0.0%	0.0%	0.0%	0.0%	0.0%	0.0%	0.0%	0.0%	0.0%	0.0%	-
Eurowings	22	90.9%	0.0%	0.0%	0.0%	0.0%	4.5%	0.0%	0.0%	4.5%	0.0%	0.0%	0.0%	0.0%	0.0%	-
Federal Express	10	100.0%	0.0%	0.0%	0.0%	0.0%	0.0%	0.0%	0.0%	0.0%	0.0%	0.0%	0.0%	0.0%	0.0%	-
Finnair	20	100.0%	0.0%	0.0%	0.0%	0.0%	0.0%	0.0%	0.0%	0.0%	0.0%	0.0%	0.0%	0.0%	0.0%	-
Fly Ernest	2	100.0%	0.0%	0.0%	0.0%	0.0%	0.0%	0.0%	0.0%	0.0%	0.0%	0.0%	0.0%	0.0%	0.0%	-
Fly One	6	33.3%	0.0%	0.0%	0.0%	0.0%	16.7%	16.7%	0.0%	0.0%	0.0%	0.0%	0.0%	33.3%	0.0%	-
Flybe	146	98.6%	0.0%	0.0%	0.0%	0.0%	0.0%	0.0%	0.0%	1.4%	0.0%	0.0%	0.0%	0.0%	0.0%	-
Hainan Airlines	12	100.0%	0.0%	0.0%	0.0%	0.0%	0.0%	0.0%	0.0%	0.0%	0.0%	0.0%	0.0%	0.0%	0.0%	-
Iberia	28	85.7%	7.1%	0.0%	0.0%	7.1%	0.0%	0.0%	0.0%	0.0%	0.0%	0.0%	0.0%	0.0%	0.0%	-
Iberia Express	1	100.0%	0.0%	0.0%	0.0%	0.0%	0.0%	0.0%	0.0%	0.0%	0.0%	0.0%	0.0%	0.0%	0.0%	-
Icelandair	12	83.3%	0.0%	0.0%	0.0%	0.0%	0.0%	0.0%	8.3%	0.0%	0.0%	0.0%	0.0%	0.0%	8.3%	-
KLM Royal Dutch Airlines	76	78.9%	7.9%	0.0%	0.0%	0.0%	0.0%	0.0%	0.0%	0.0%	0.0%	0.0%	6.6%	6.6%	0.0%	-
Loganair	28	60.7%	3.6%	17.9%	0.0%	7.1%	0.0%	0.0%	3.6%	0.0%	0.0%	0.0%	3.6%	0.0%	3.6%	-
Lufthansa	84	79.8%	11.9%	8.3%	0.0%	0.0%	0.0%	0.0%	0.0%	0.0%	0.0%	0.0%	0.0%	0.0%	0.0%	-
Luxair	28	82.1%	0.0%	17.9%	0.0%	0.0%	0.0%	0.0%	0.0%	0.0%	0.0%	0.0%	0.0%	0.0%	0.0%	-
Norwegian	78	100.0%	0.0%	0.0%	0.0%	0.0%	0.0%	0.0%	0.0%	0.0%	0.0%	0.0%	0.0%	0.0%	0.0%	-
Qatar Airways	14	100.0%	0.0%	0.0%	0.0%	0.0%	0.0%	0.0%	0.0%	0.0%	0.0%	0.0%	0.0%	0.0%	0.0%	-
Ryanair	1,679	99.3%	0.2%	0.1%	0.0%	0.0%	0.1%	0.0%	0.1%	0.0%	0.0%	0.0%	0.0%	0.0%	0.1%	-
SAS Scandinavian	50	90.0%	10.0%	0.0%	0.0%	0.0%	0.0%	0.0%	0.0%	0.0%	0.0%	0.0%	0.0%	0.0%	0.0%	-
Star Air	20	100.0%	0.0%	0.0%	0.0%	0.0%	0.0%	0.0%	0.0%	0.0%	0.0%	0.0%	0.0%	0.0%	0.0%	-
SunExpress	2	100.0%	0.0%	0.0%	0.0%	0.0%	0.0%	0.0%	0.0%	0.0%	0.0%	0.0%	0.0%	0.0%	0.0%	-
Swiss International	34	94.1%	0.0%	0.0%	0.0%	0.0%	5.9%	0.0%	0.0%	0.0%	0.0%	0.0%	0.0%	0.0%	0.0%	-
Transavia France	10	90.0%	0.0%	10.0%	0.0%	0.0%	0.0%	0.0%	0.0%	0.0%	0.0%	0.0%	0.0%	0.0%	0.0%	-
Travel Service	4	100.0%	0.0%	0.0%	0.0%	0.0%	0.0%	0.0%	0.0%	0.0%	0.0%	0.0%	0.0%	0.0%	0.0%	-
TUI Airways	29	89.7%	3.4%	3.4%	0.0%	3.4%	0.0%	0.0%	0.0%	0.0%	0.0%	0.0%	0.0%	0.0%	0.0%	-
Turkish Airlines	28	100.0%	0.0%	0.0%	0.0%	0.0%	0.0%	0.0%	0.0%	0.0%	0.0%	0.0%	0.0%	0.0%	0.0%	-
United Airlines	42	100.0%	0.0%	0.0%	0.0%	0.0%	0.0%	0.0%	0.0%	0.0%	0.0%	0.0%	0.0%	0.0%	0.0%	-
Vueling	14	100.0%	0.0%	0.0%	0.0%	0.0%	0.0%	0.0%	0.0%	0.0%	0.0%	0.0%	0.0%	0.0%	0.0%	-
Westjet	14	100.0%	0.0%	0.0%	0.0%	0.0%	0.0%	0.0%	0.0%	0.0%	0.0%	0.0%	0.0%	0.0%	0.0%	-
WOW Air	22	95.5%	0.0%	0.0%	0.0%	4.5%	0.0%	0.0%	0.0%	0.0%	0.0%	0.0%	0.0%	0.0%	0.0%	-
Zimex Aviation	5	100.0%	0.0%	0.0%	0.0%	0.0%	0.0%	0.0%	0.0%	0.0%	0.0%	0.0%	0.0%	0.0%	0.0%	-
TOTAL	4,992	96.2%	1.7%	0.8%	0.1%	0.2%	0.2%	0.1%	0.1%	0.1%	0.0%	0.0%	0.2%	0.1%	0.2%	-

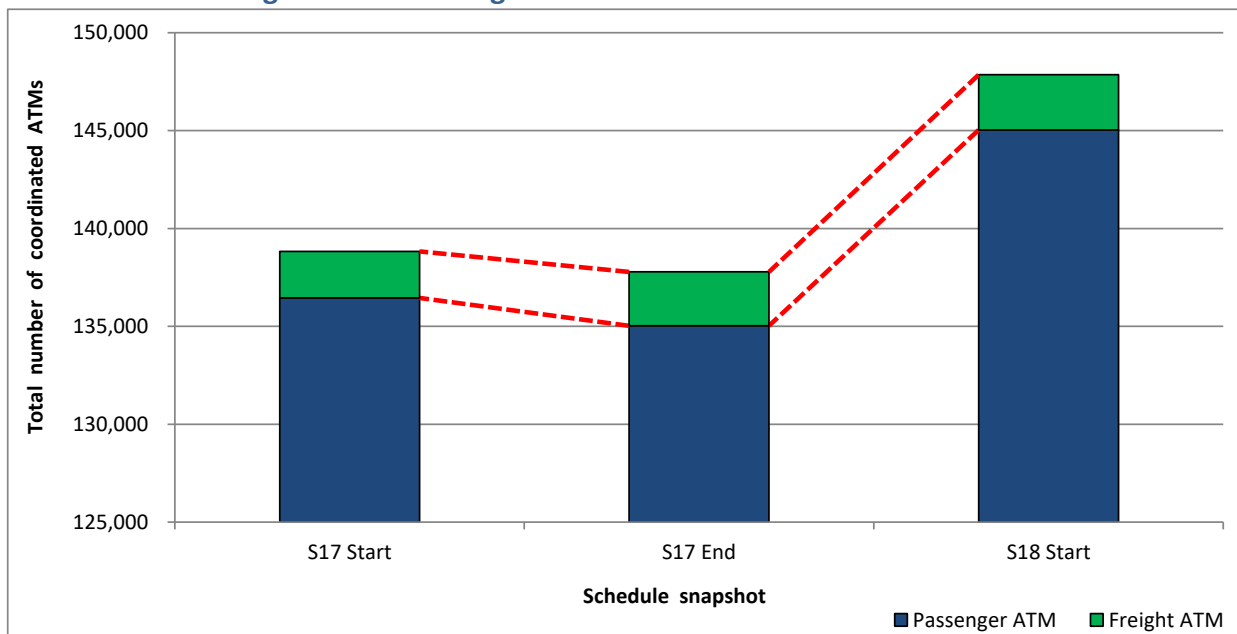
Operators with 0 'allocated ATMs' and 0 'Requests with NO slot allocated' in S18, are included in this list due to having slots allocated in either S17 Start or S17 End schedules.

Significant Route Changes

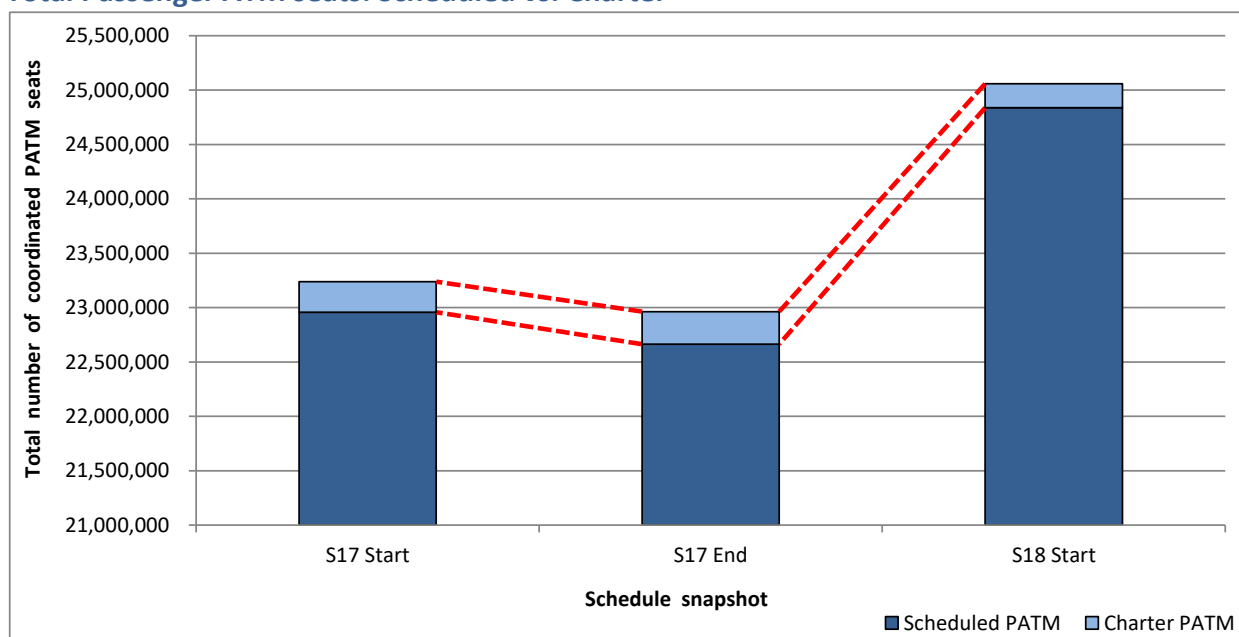


Operator	Category	Description of change from S17 schedule to S18 schedule
Aegean Airlines	CHANGE	Increase in Athens service.
Aer Lingus	NEW	Philadelphia & Seattle service.
Aer Lingus	CHANGE	Decrease in London Heathrow, Madrid, Bristol (EI Regional), Glasgow (EI Regional) & Newcastle (EI Regional) services.
Aer Lingus	CHANGE	Increase in Izmir, Malaga, Amsterdam, Bilbao, Birmingham (EI Regional), Bordeaux, Catania, Dubrovnik, Rome, Hamburg, Los Angeles, Lyon, Marseille, Milan, Miami, Nantes, Chicago, Split, Toulouse, Berlin Tegal, Prague, Venice, Vienna & Zurich services.
Aer Lingus	CANCELLED	Warsaw service.
Air Arabia Maroc	CHANGE	Increase in Agadir service.
Air Canada	NEW	Montreal service.
Air Canada	CHANGE	Decrease in Toronto service.
Air Canada	CHANGE	Increase in Vancouver service.
Air France	CHANGE	Decrease in Paris Ch. De Gaulle service.
Air Transat	CHANGE	Increase in Toronto service.
Blue Air	CHANGE	Increase in Bacau service.
British Airways	CHANGE	Decrease in London Heathrow service.
British Airways	CHANGE	Increase in London City service (BA Cityflyer).
Cathay Pacific	NEW	Hong Kong service.
Cello Aviation	NEW	Dubrovnik, Lourdes, Naples, Palma Mallorca, Reus, Salzburg & Verona services.
Cityjet	CHANGE	Increase in London City service.
Cityjet	CANCELLED	Reus service.
Croatia Airlines	NEW	Zagreb service.
Ethiopian Airlines	CHANGE	Increase in Addis Ababa service.
Fly Ernest	NEW	Verona service.
Flybe	NEW	Southend service.
Flybe	CHANGE	Increase in Cardiff & Southampton services.
Hainan Airlines	NEW	Beijing & Shenzhen services.
Icelandair	CHANGE	Increase in Keflavik service.
KLM Royal Dutch Airlines	CHANGE	Increase in Amsterdam service.
Loganair	NEW	Norwich service.
Lufthansa	CHANGE	Increase in Frankfurt & Munich services.
Luxair	CHANGE	Increase in Luxembourg service.
Norwegian	CHANGE	Increase in Providence & Stewart services.
Ryanair	NEW	Munich, Naples, Paphos, Marrakech & Stuttgart services.
Ryanair	CHANGE	Decrease in Malaga, Comiso, Kaunas & Nantes services.
Ryanair	CHANGE	Increase in Lanzarote, Milan, Birmingham, Bristol, Faro, Gdansk, Glasgow, Hamburg, Malta, Manchester & Vilnius services.
Swiss International	CHANGE	Increase in Zurich service.
Transavia	CANCELLED	Munich service.
United Airlines	CHANGE	Decrease in Newark service.
United Airlines	CHANGE	Increase in Chicago service.
Vueling	CHANGE	Increase in Barcelona service.

Total ATMs: Passenger ATMs vs. Freight ATMs



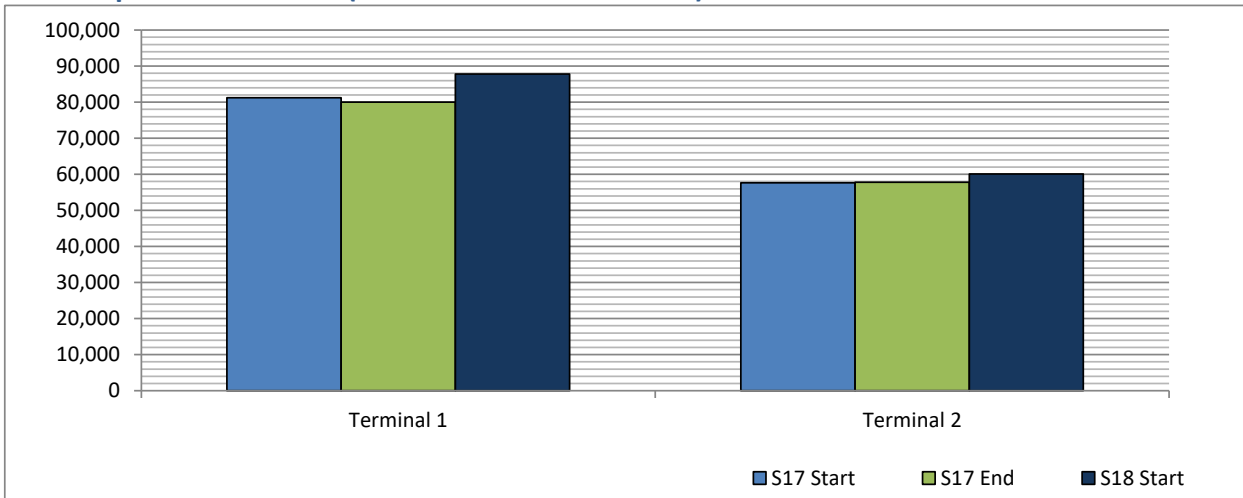
Total Passenger ATM seats: Scheduled vs. Charter



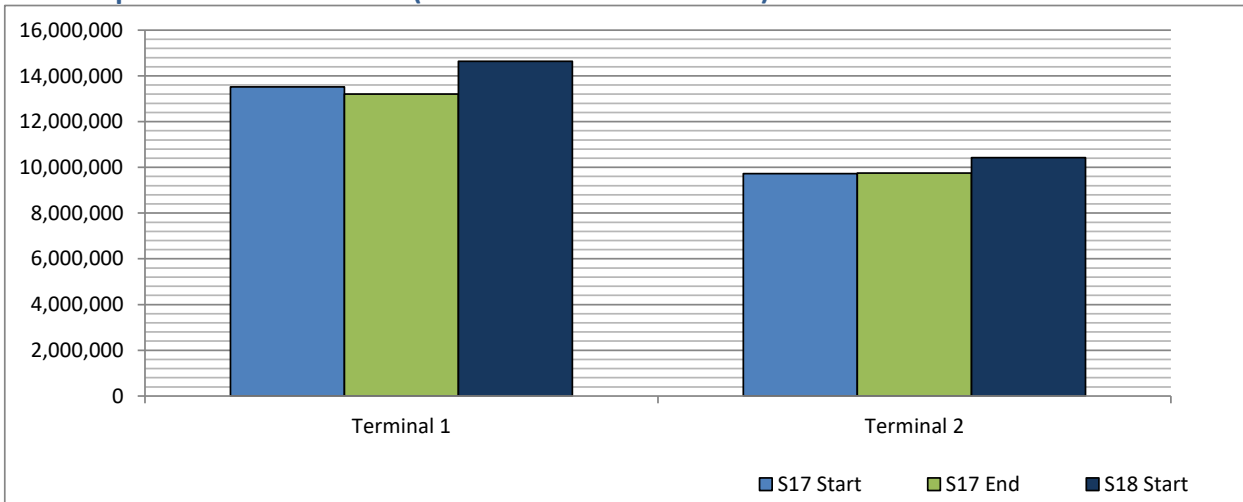
Full Season - Terminal Analysis



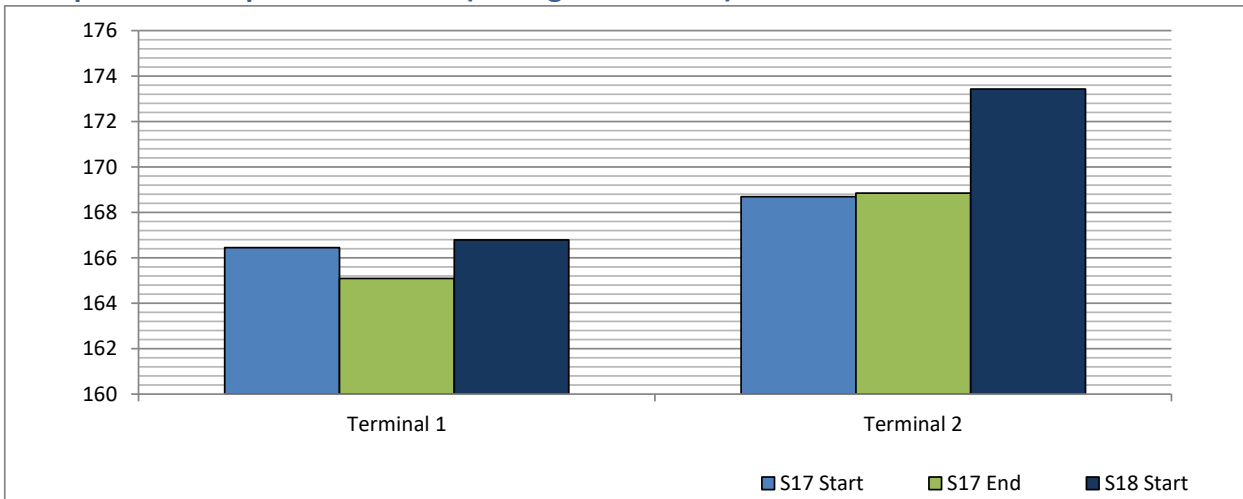
Air Transport Movements (total allocated for season)



Air Transport Movement Seats (total allocated for season)



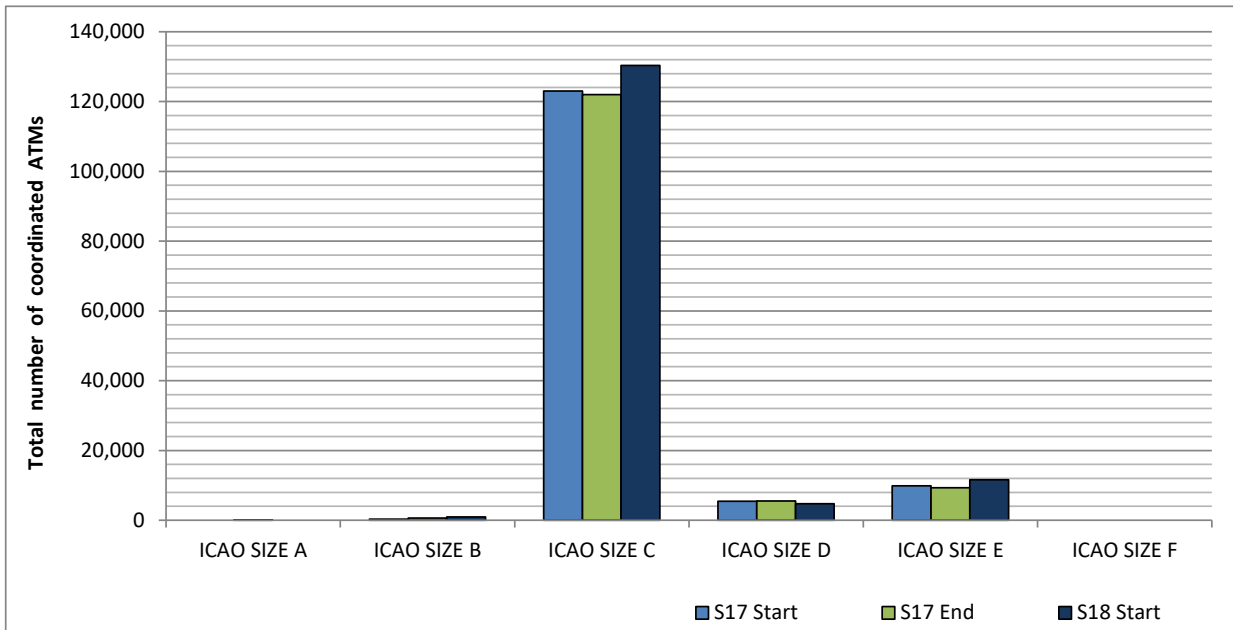
Seats per Air Transport Movement (average for season)



Full Season - Aircraft Size Analysis

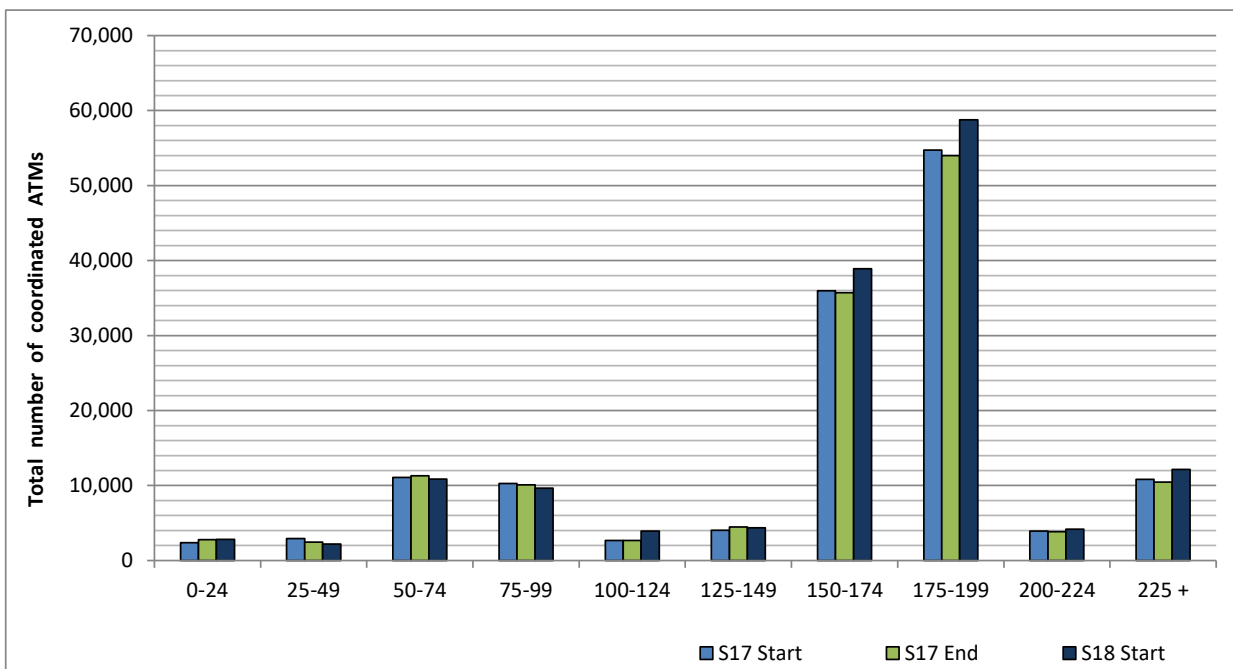


ICAO size designation



Note: See Glossary for definitions of ICAO SIZE groupings

Air Transport Movement seat distribution

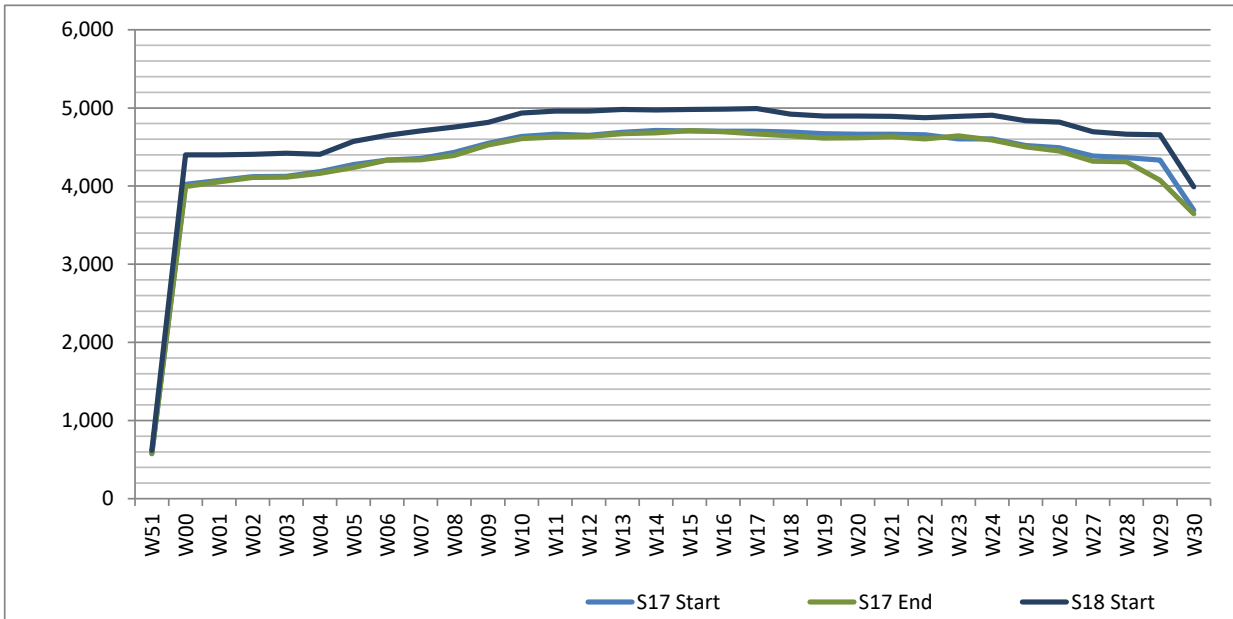


Note: FREIGHT-ONLY services with 0 seats are included in the first seat band '0-24'

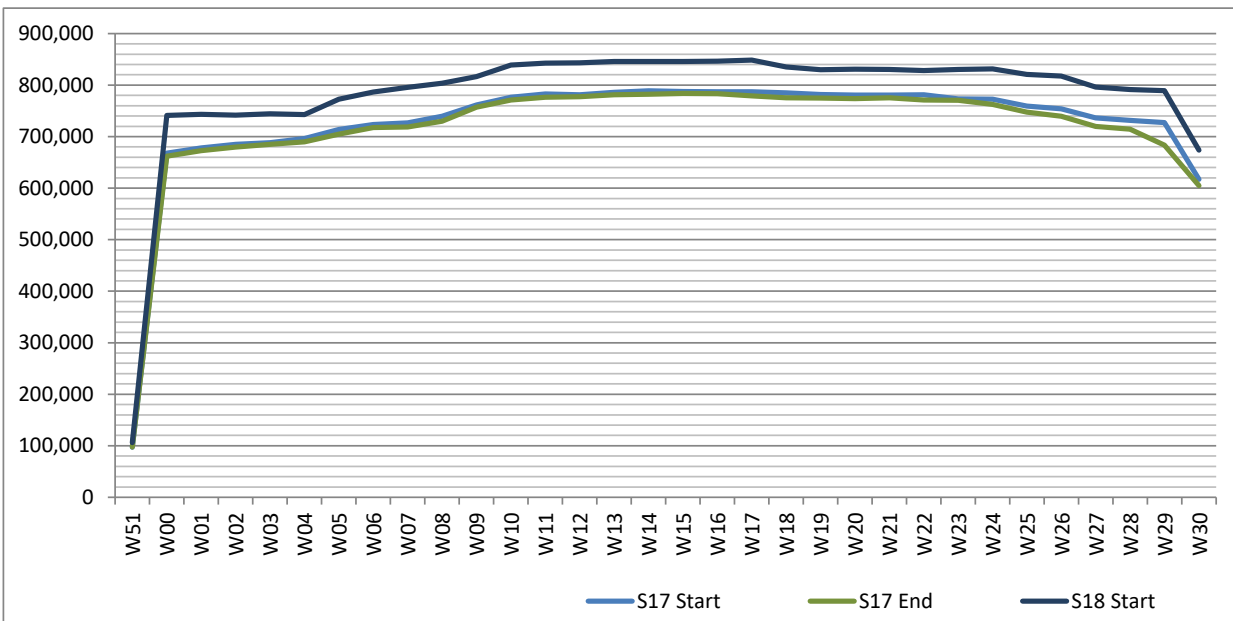
Full Season - Seasonality



Air Transport Movements by week of season



Air Transport Movement Seats by week of season



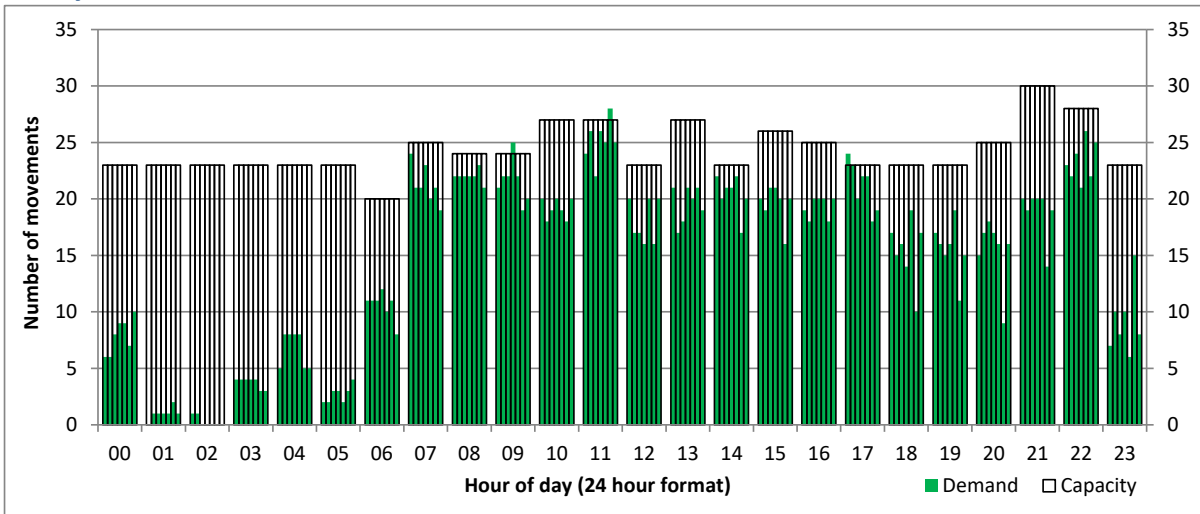
Peak Week - Hourly Runway Demand

Schedule: S18 Start



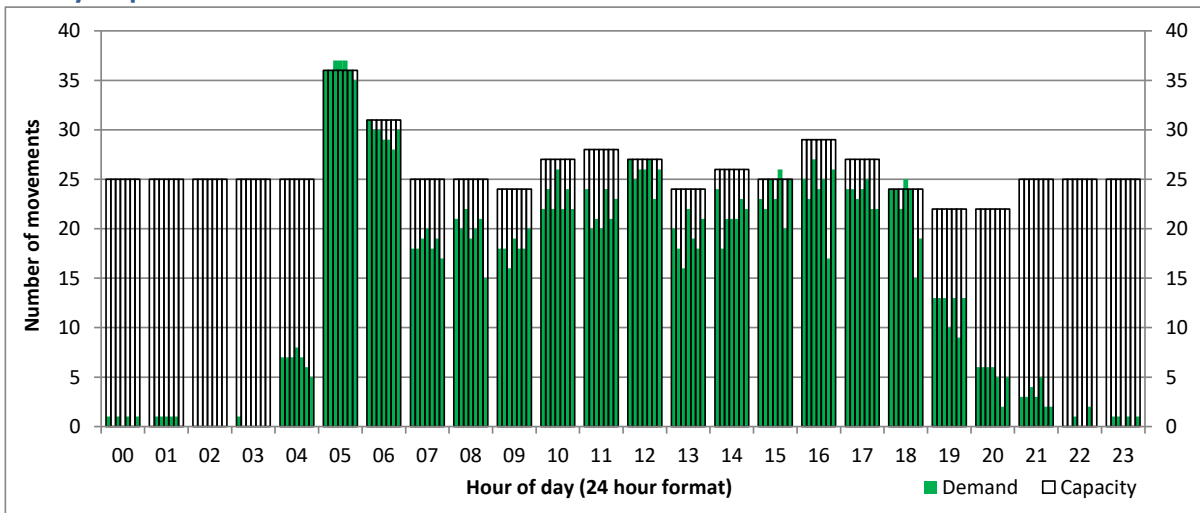
Hourly Arrival Demand

Time: UTC



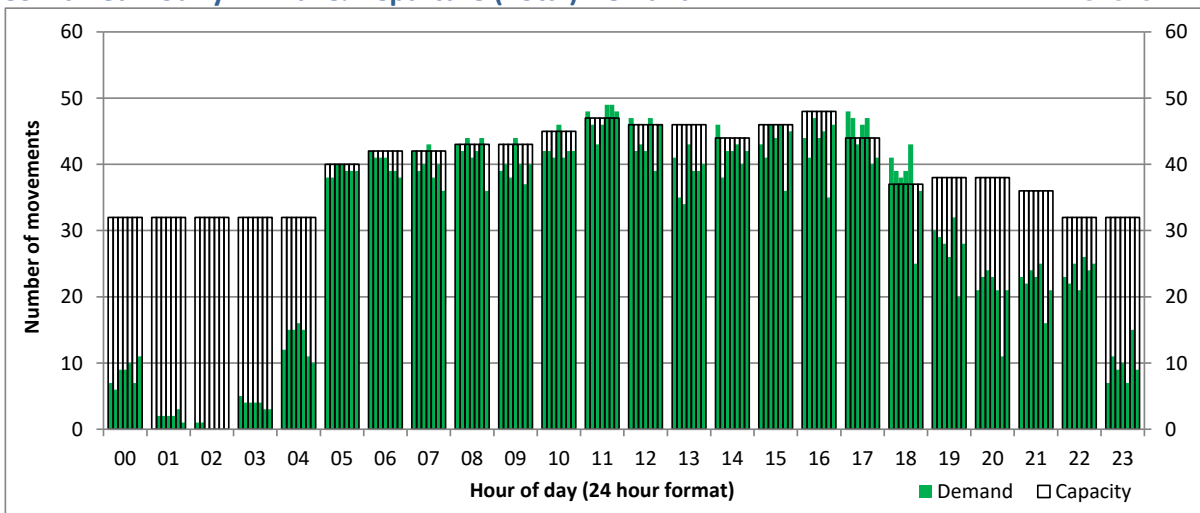
Hourly Departure Demand

Time: UTC



Combined Hourly Arrival & Departure (Total) Demand

Time: UTC



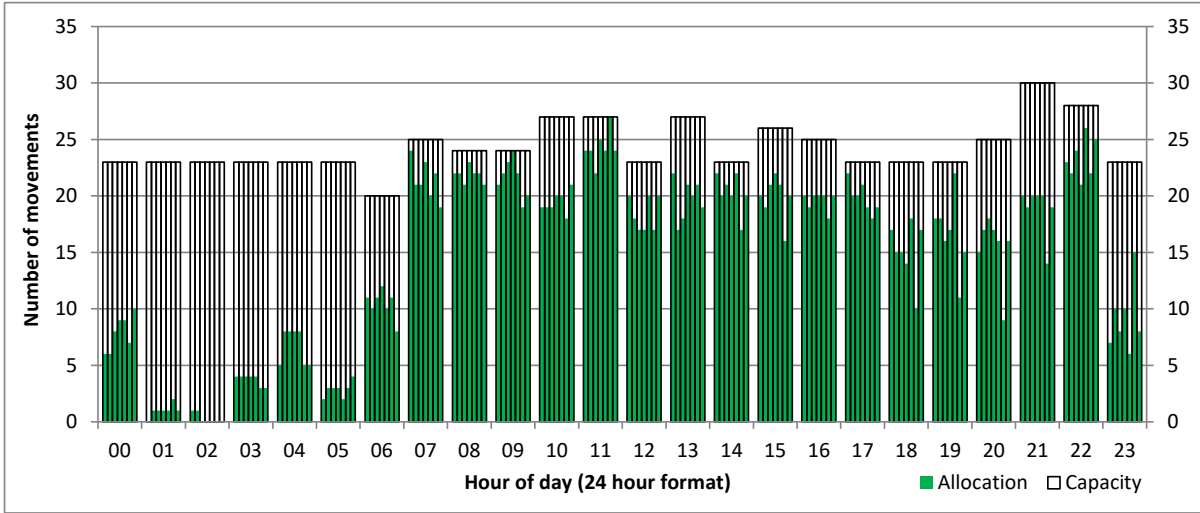
Peak Week - Hourly Runway Allocation

Schedule: S18 Start



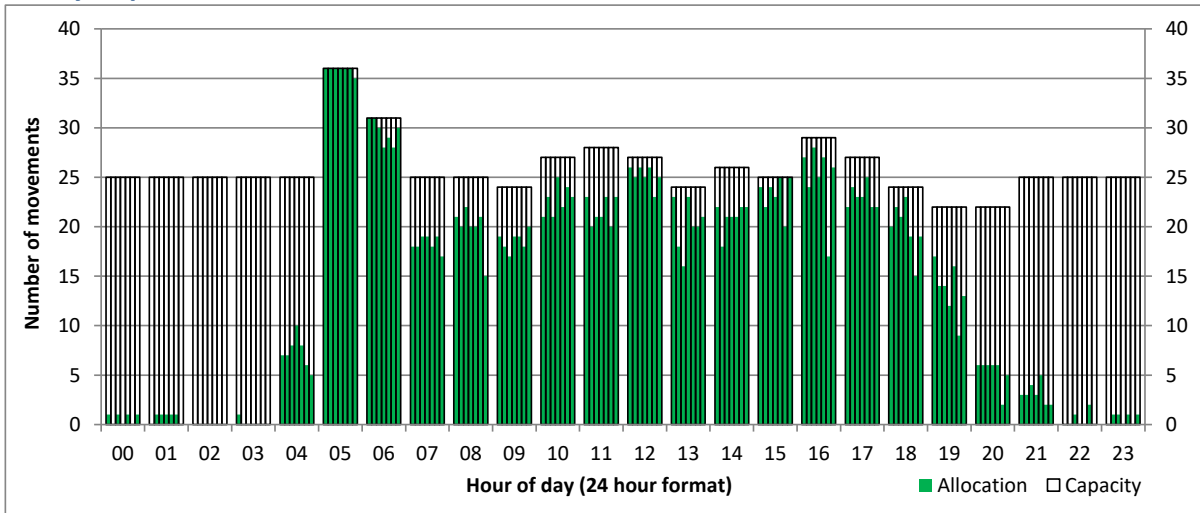
Hourly Arrival Allocation

Time: UTC



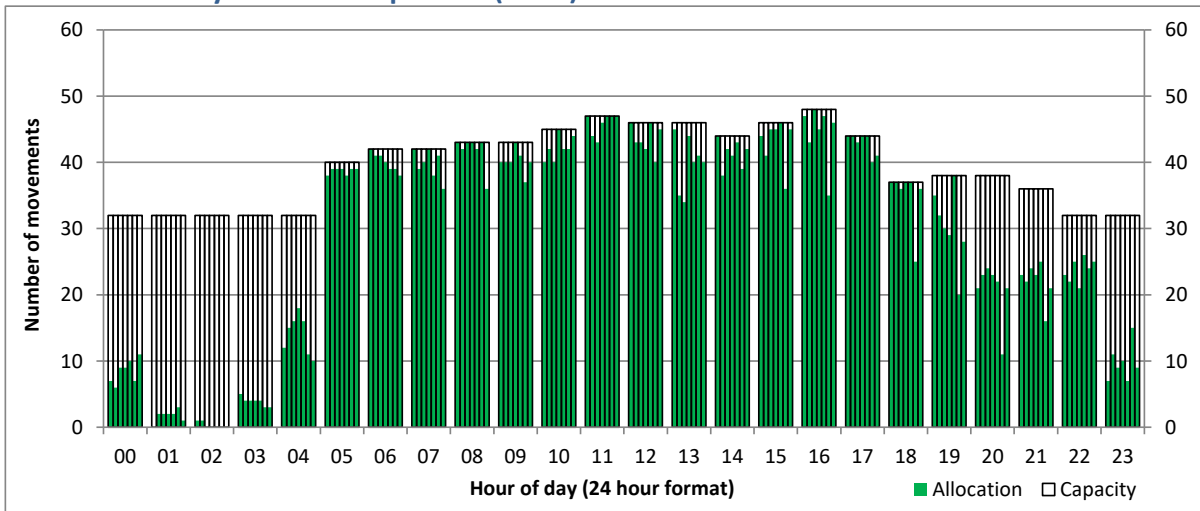
Hourly Departure Allocation

Time: UTC



Combined Hourly Arrival & Departure (Total) Allocation

Time: UTC



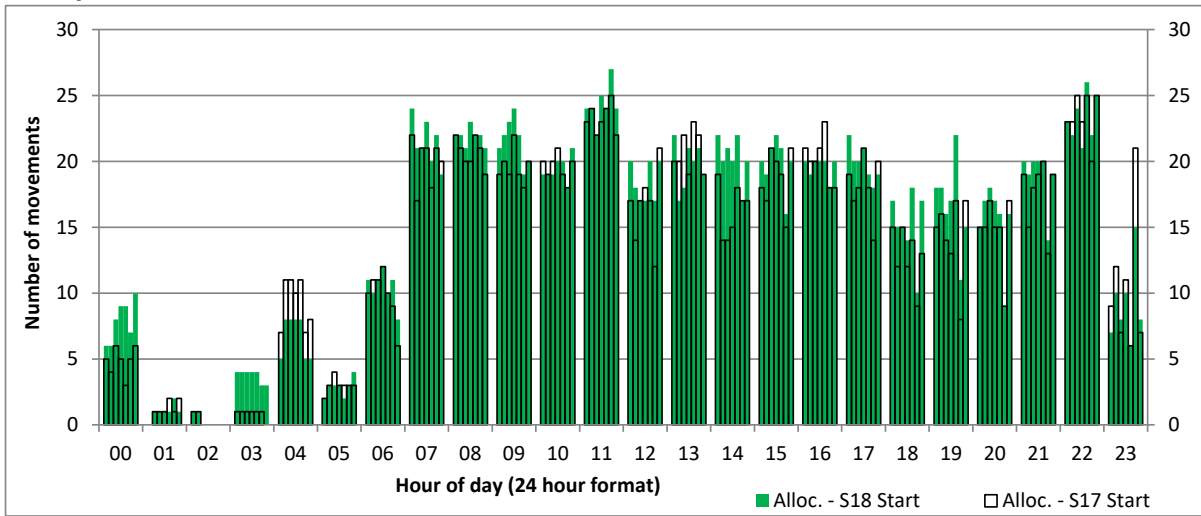
Peak Week - Runway Allocation Comparison

Comparison of S18 Start vs. S17 Start



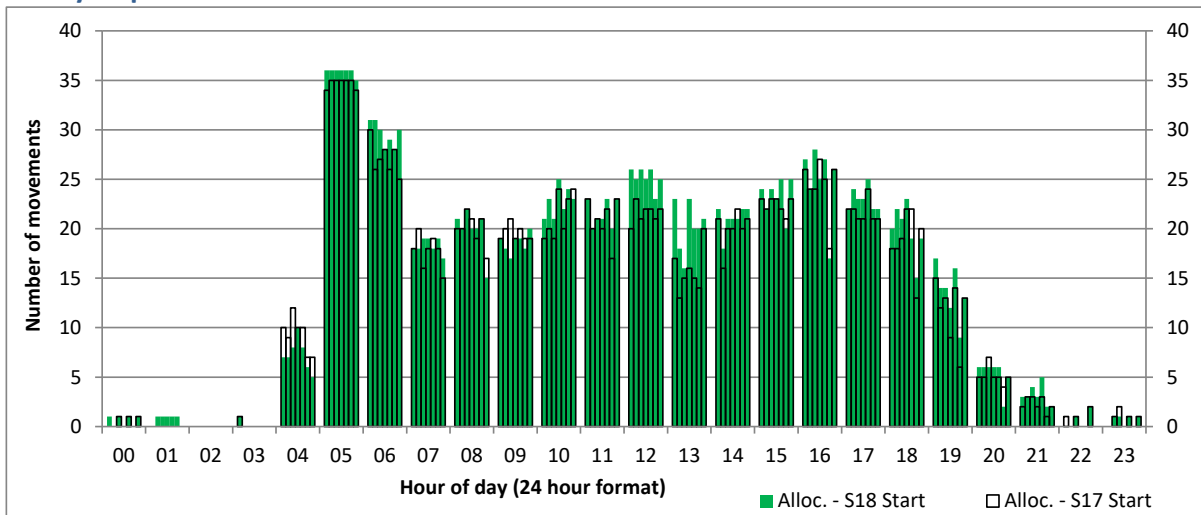
Hourly Arrival Allocation

Time: UTC



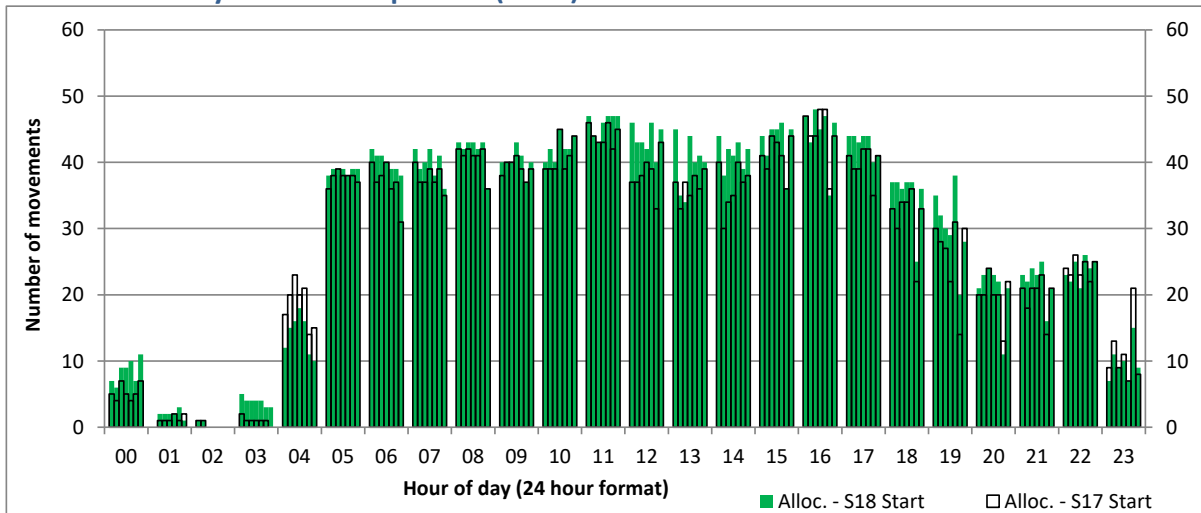
Hourly Departure Allocation

Time: UTC



Combined Hourly Arrival & Departure (Total) Allocation

Time: UTC



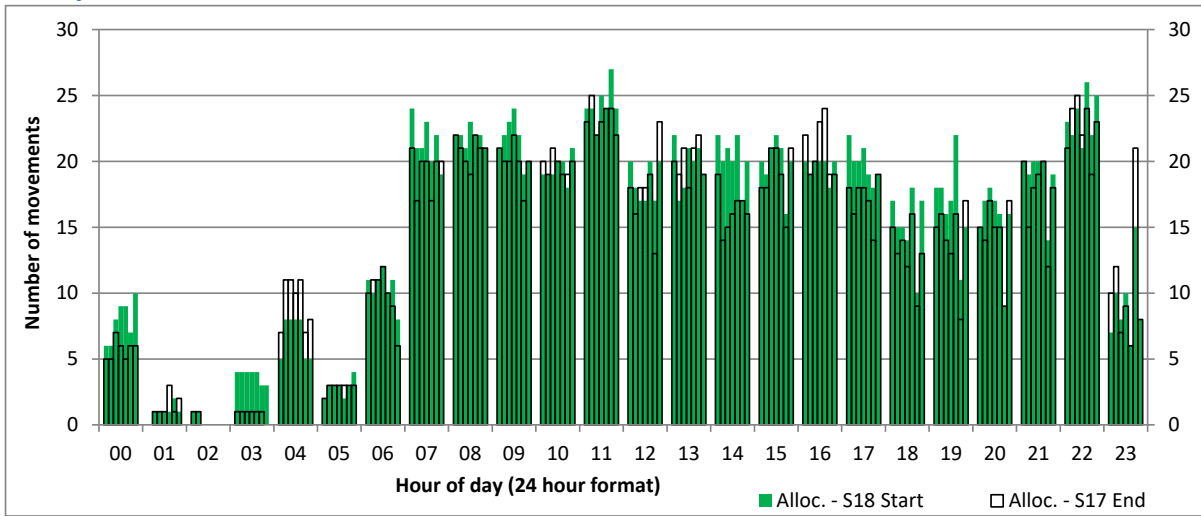
Peak Week - Runway Allocation Comparison

Comparison of S18 Start vs. S17 End



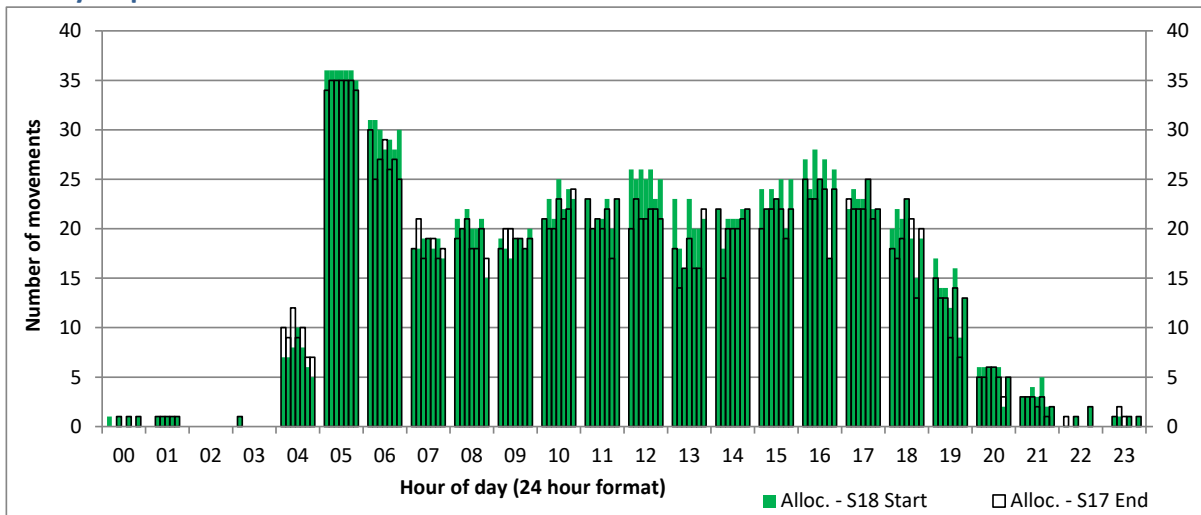
Hourly Arrival Allocation

Time: UTC



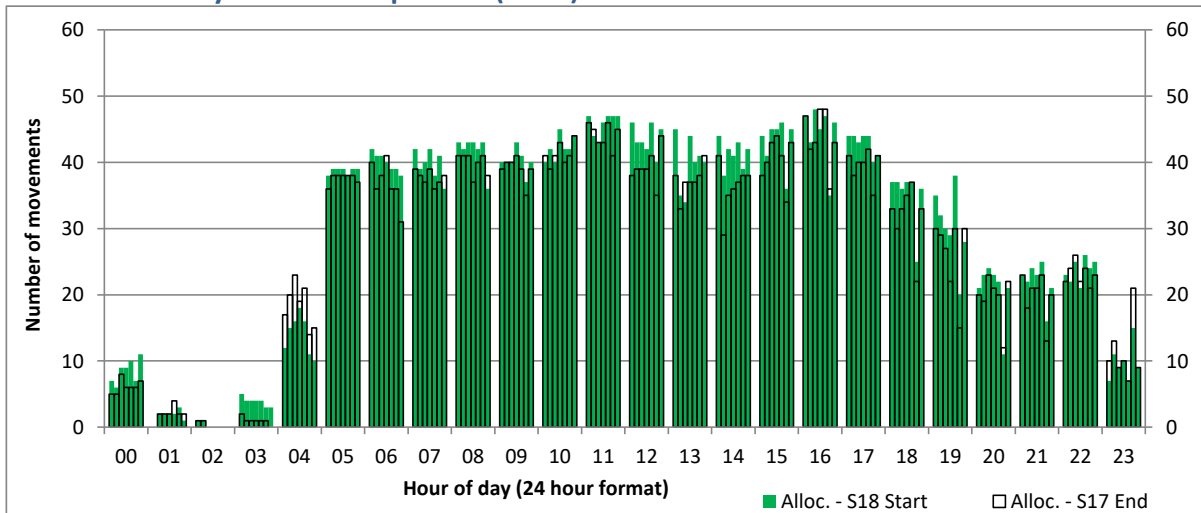
Hourly Departure Allocation

Time: UTC



Combined Hourly Arrival & Departure (Total) Allocation

Time: UTC



Peak Week - Passengers Histogram

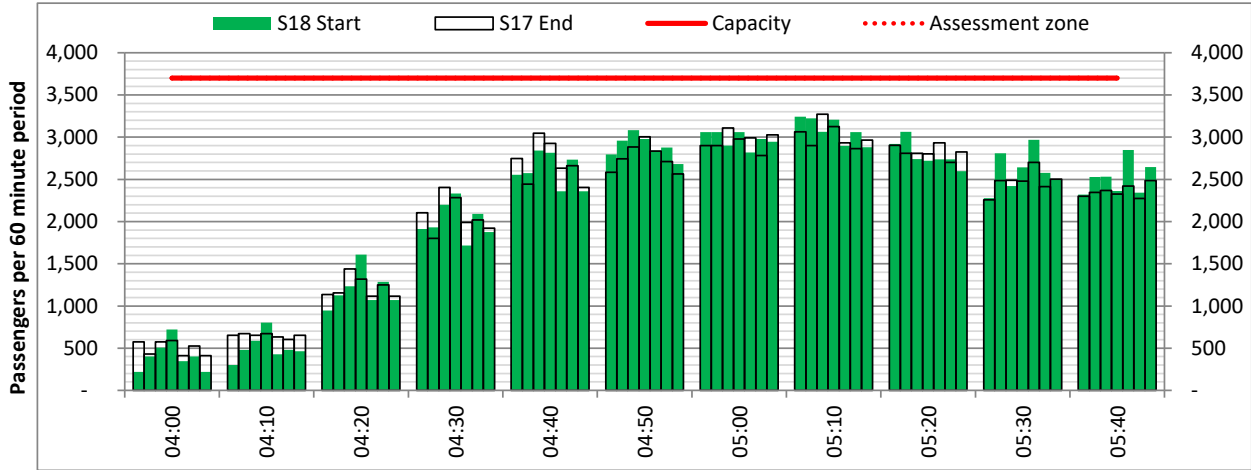
DEPARTURE - 60 minute count rolling every 10 mins (T60/10)



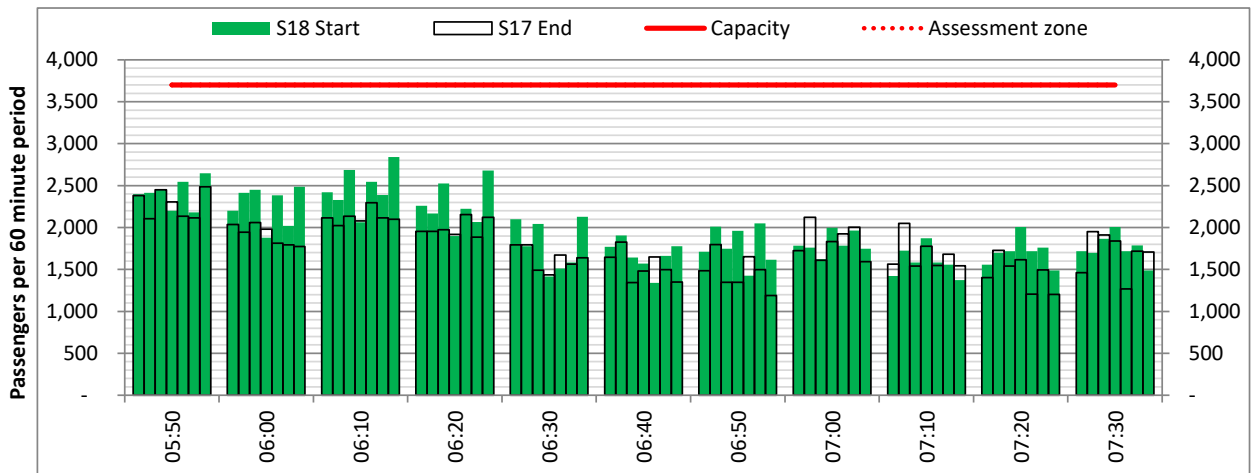
Terminals: 1

Operators: All Operators

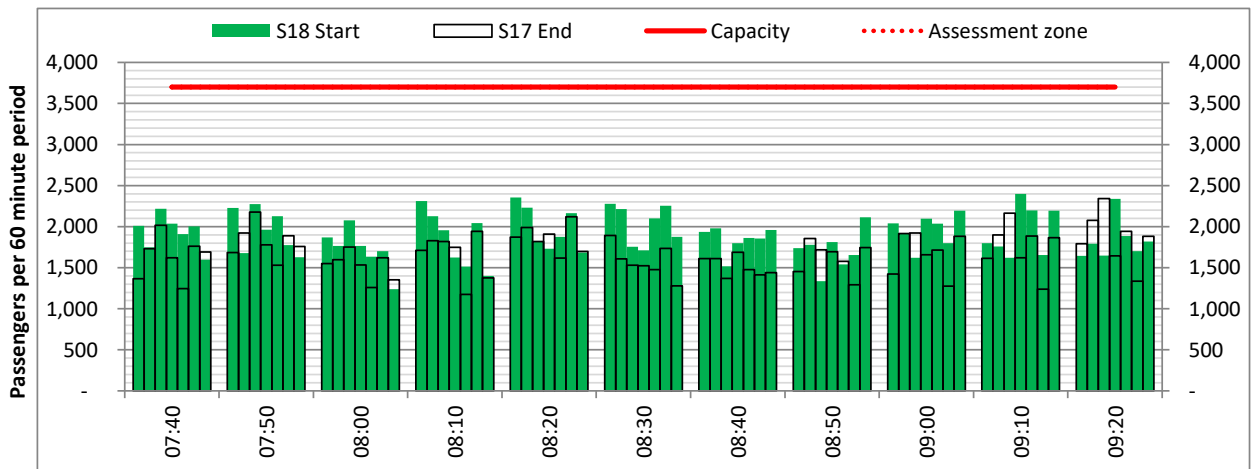
Days: 1234567



Start of count period - Time: UTC



Start of count period - Time: UTC



Start of count period - Time: UTC

Peak Week - Passengers Histogram

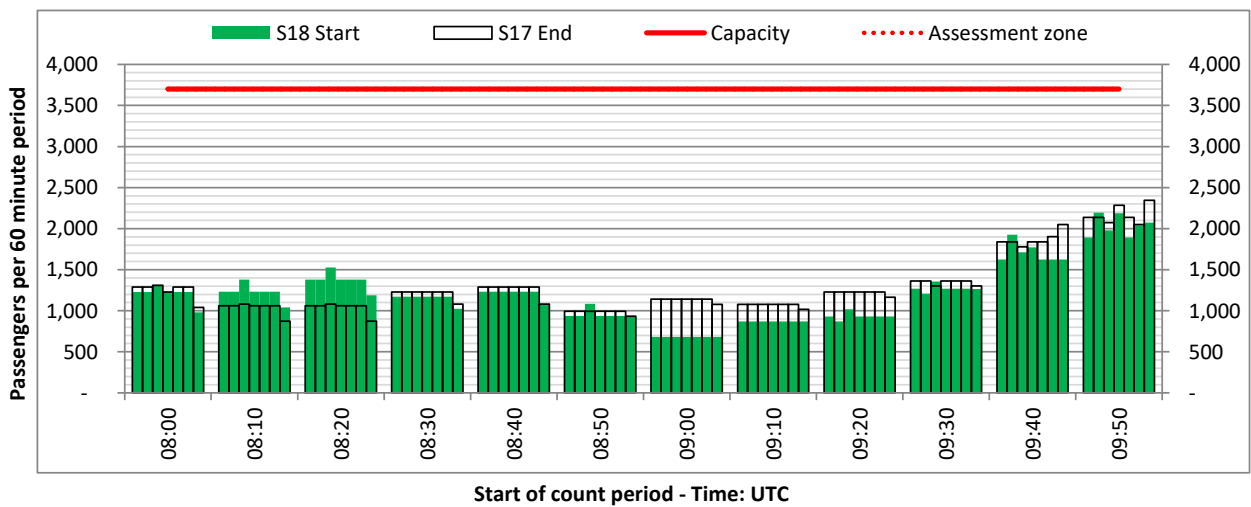
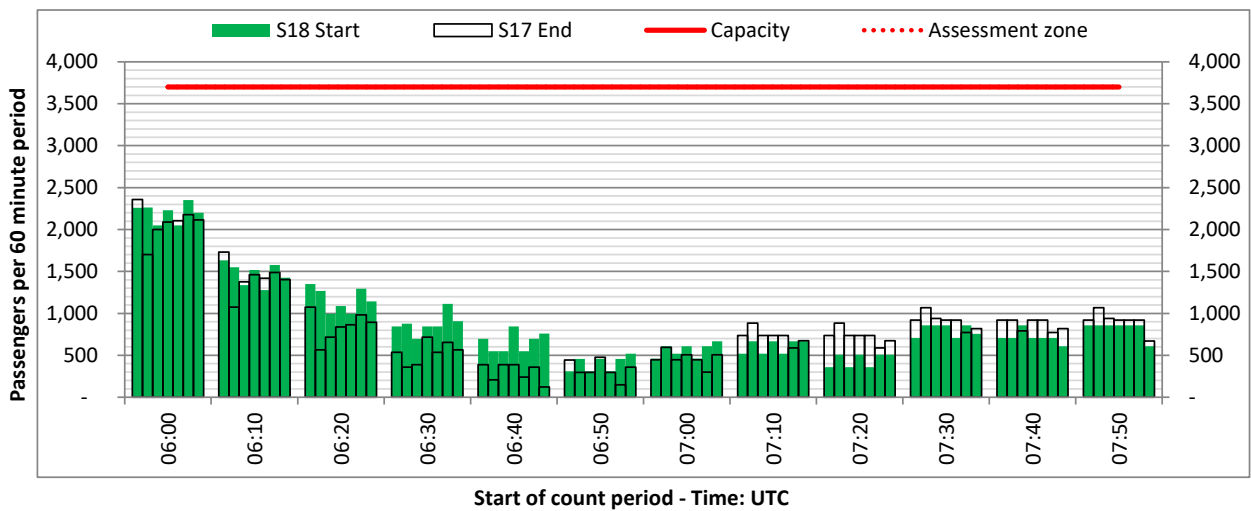
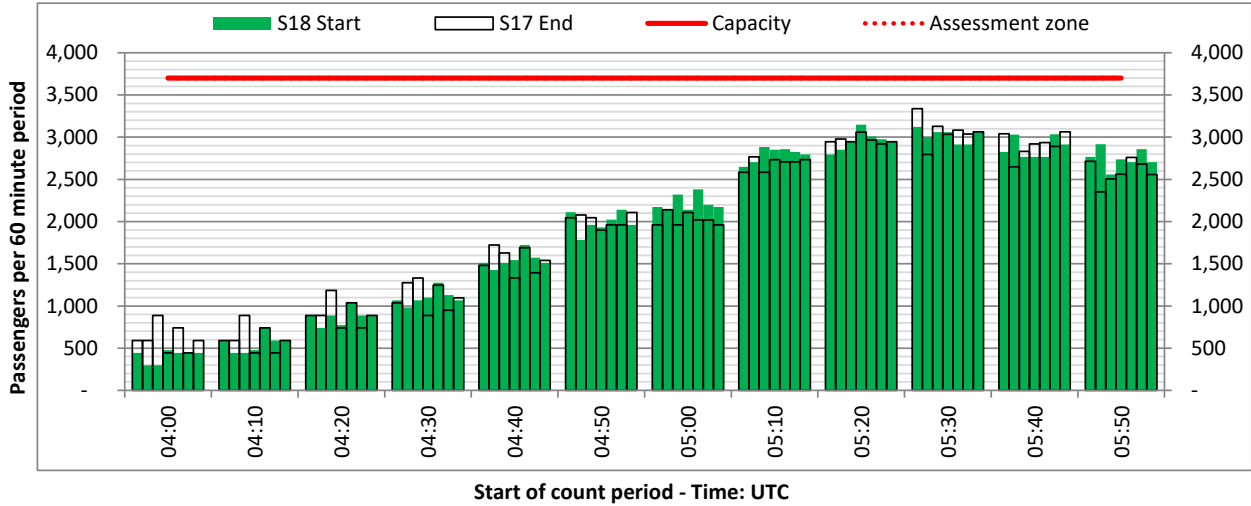
DEPARTURE - 60 minute count rolling every 10 mins (T60/10)



Terminals: 2

Operators: All Operators

Days: 1234567



Peak Week - Passengers Histogram

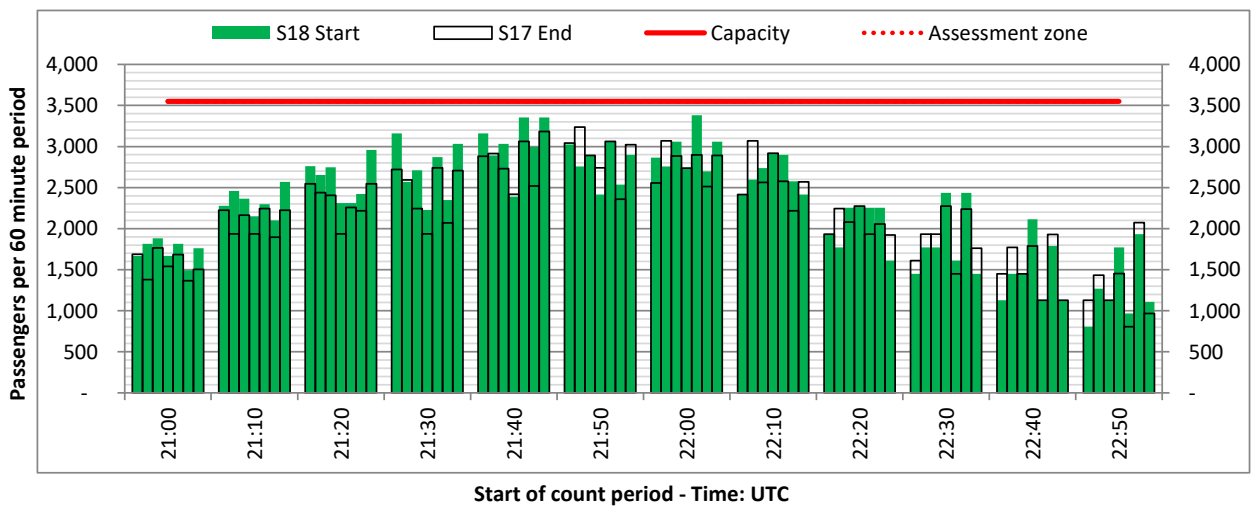
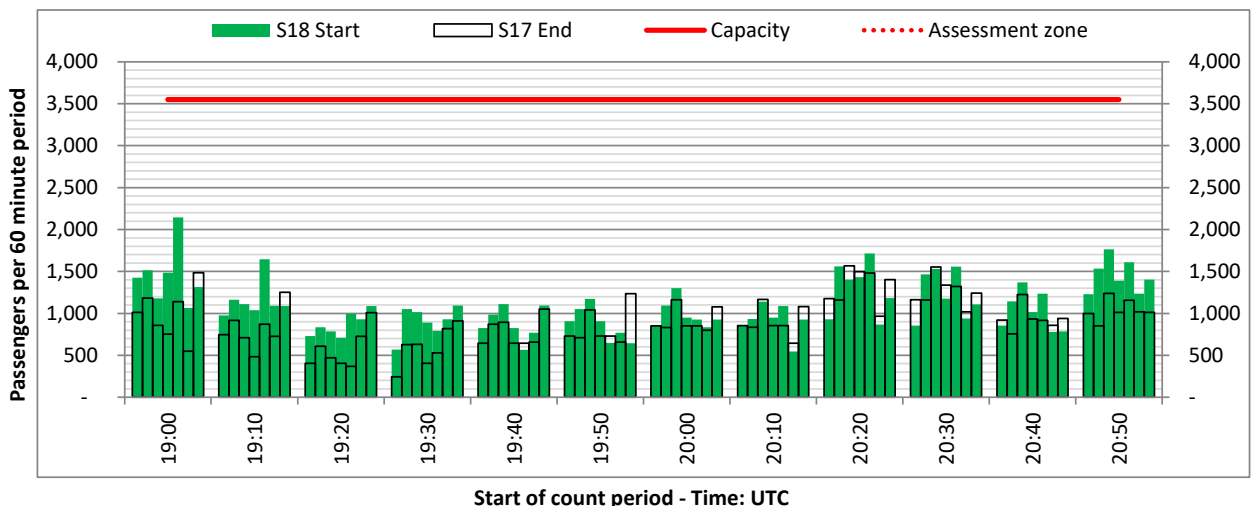
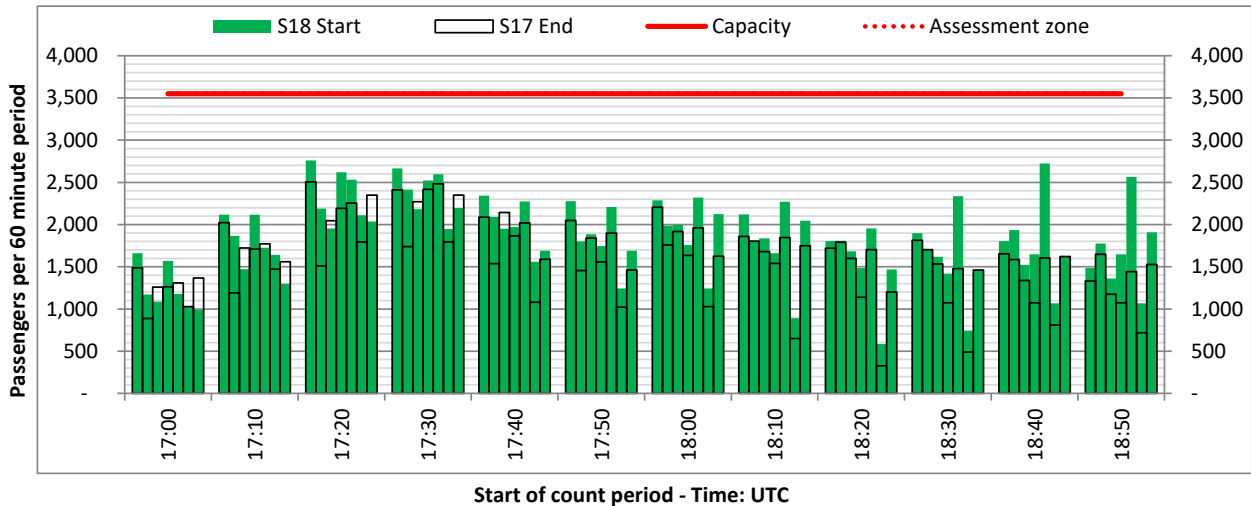
ARRIVAL - 60 minute count rolling every 10 mins (T60/10)



Terminals: 1

Operators: All Operators

Days: 1234567



Peak Week - Passengers Histogram

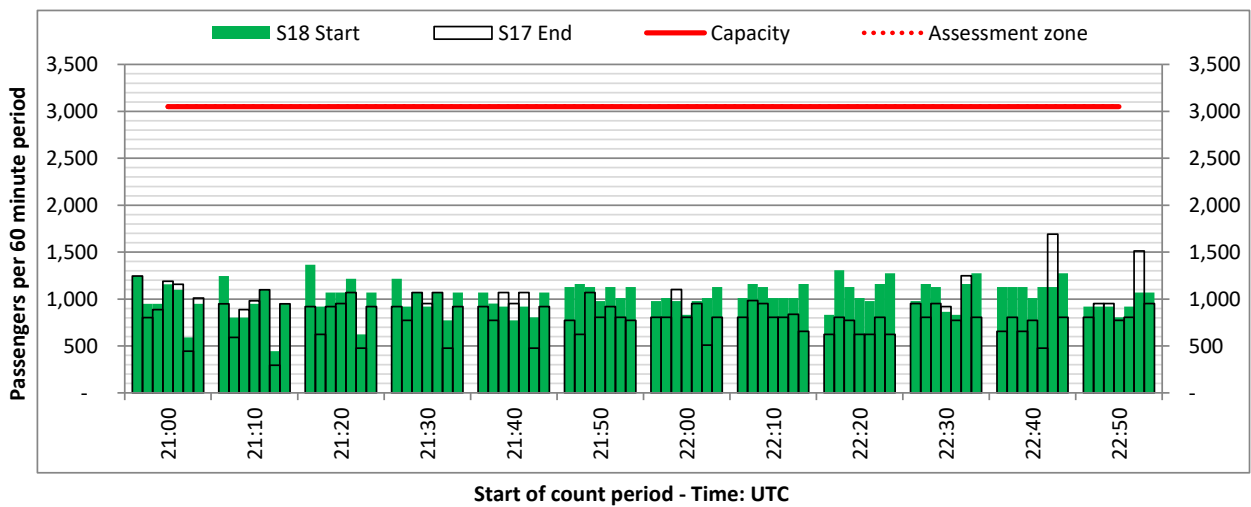
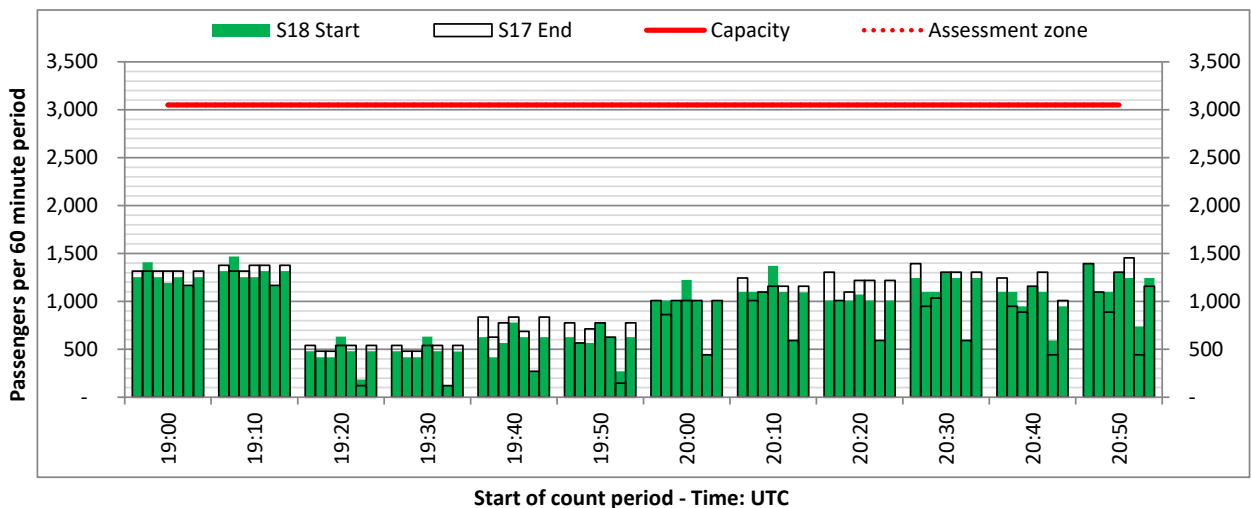
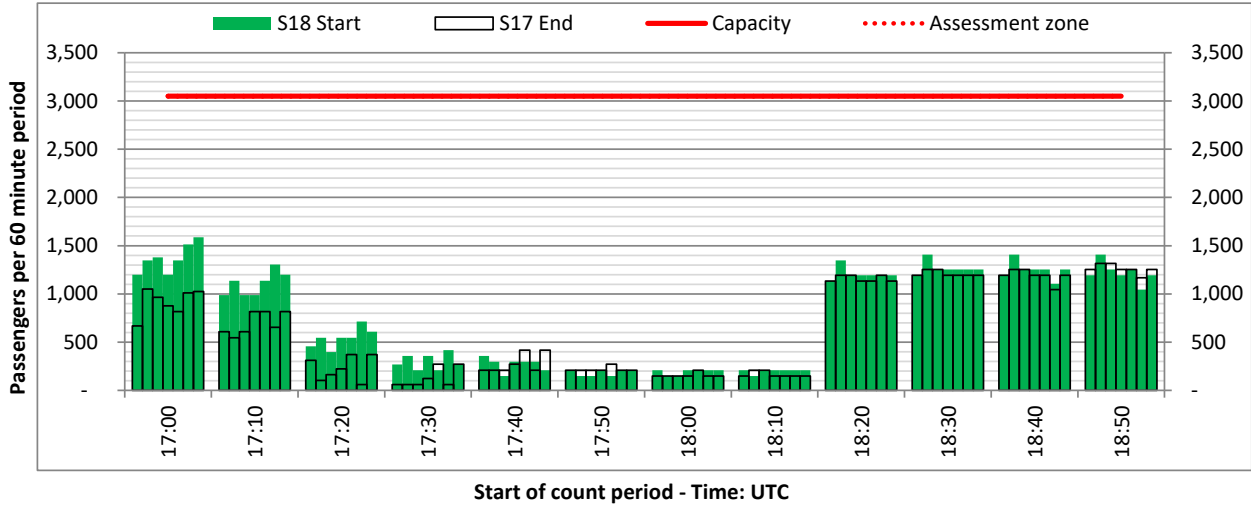
ARRIVAL - 60 minute count rolling every 10 mins (T60/10)



Terminals: 2

Operators: All Operators

Days: 1234567



Peak Week - Passengers Histogram

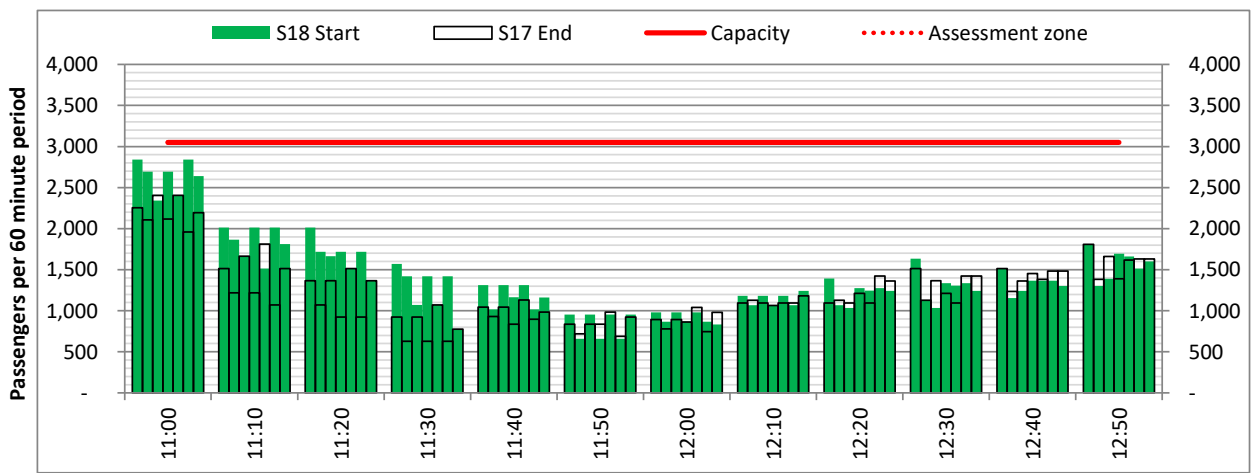
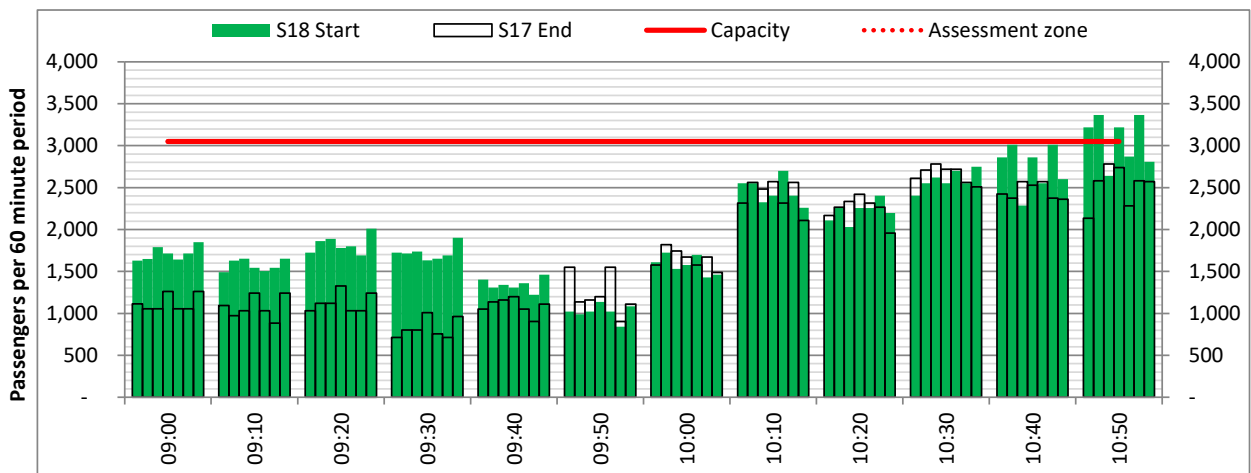
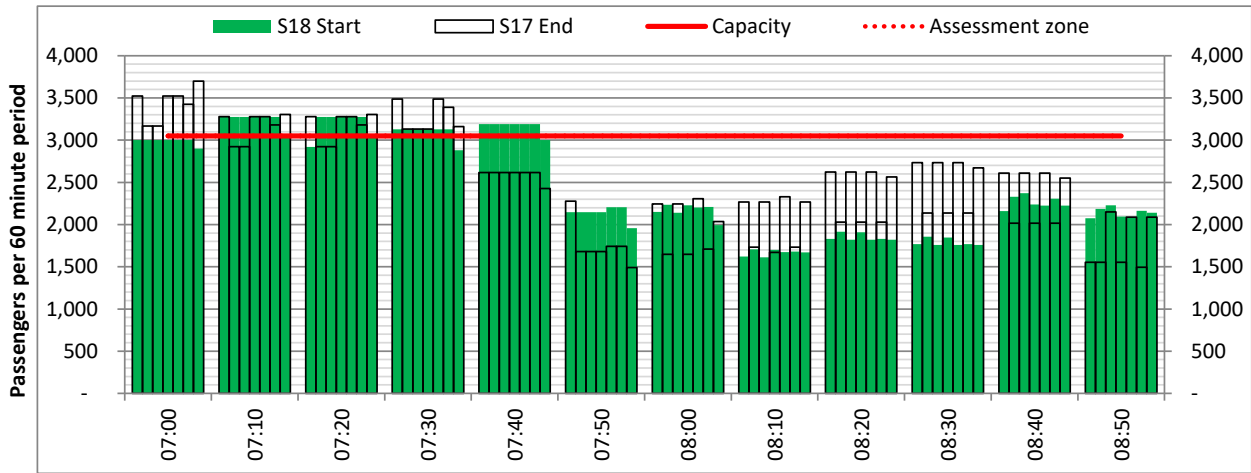
ARRIVAL - 60 minute count rolling every 10 mins (T60/10)



Terminals: 2

Operators: All Operators

Days: 1234567



Air Transport Movement (ATM)	Any aircraft movement which is either a scheduled or chartered passenger or cargo flight.
Common Travel Area (CTA)	Origin or Destination is in Republic of Ireland or the Channel Islands.
Demand	Unconstrained demand before any schedule adjustments have been made.
"Fill-in"	These are gaps in a historic series of slots which the carrier requests to "Fill-in" at Initial Submissions - Fill-ins will be recognisably part of the historic series and will have the same flight details to qualify as a "Fill-in".
Hist (SHL)	Snapshot of historic schedule rolled over from end of the previous equivalent season - as advised to airlines in the SHLs.
ICAO Size A	Aircraft with wingspan between 0.00m - 14.99m.
ICAO Size B	Aircraft with wingspan between 15.00m - 23.99m.
ICAO Size C	Aircraft with wingspan between 24.00m - 35.99m.
ICAO Size D	Aircraft with wingspan between 36.00m - 51.99m.
ICAO Size E	Aircraft with wingspan between 52.00m - 64.99m.
ICAO Size F	Aircraft with wingspan between 65.00m - 80.00m.
Init Coord	Snapshot of schedule immediately after Initial Coordination is completed - as advised to airlines in the SALs.
Passenger Air Transport Movement (PATM)	Any aircraft movement which is either a scheduled or chartered passenger flight.
Start	Snapshot of schedule shortly before the start of the scheduling season (exact date given below where used).
Time: Local	Times shown are in LOCAL time for the airport/scheduling season.
Time: UTC	Times shown are in Universal Time Constant (UTC).

Data snapshot descriptions

S17 Start	S17 schedule as cleared on Wed 15-Mar-17.
S17 End	S17 schedule as cleared on Thu 25-Aug-16.
S18 Start	S18 schedule as cleared on Thu 08-Mar-18.

Peak Week	Peak week for S17 is Mon 10-Jul-17 to Sun 16-Jul-17. Peak week for S18 is Mon 23-Jul-18 to Sun 29-Jul-18.
------------------	--

For ACL use

	Airport-Season-Branch-Resource	From date	To date	Time
Full Season Rep 1	DUB-S17-SoS-Standard	Sun 26-Mar-2017	Sat 28-Oct-2017	UTC
Full Season Rep 2	DUB-S17-Live-Standard	Sun 26-Mar-2017	Sat 28-Oct-2017	UTC
Full Season Rep 3	DUB-S18-SoS Report-Standard	Sun 25-Mar-2018	Sat 27-Oct-2018	UTC
	Airport-Season-Branch-Resource	From date	To date	Time
Peak Week Rep 1	DUB-S17-SoS-Standard	Mon 10-Jul-2017	Sun 16-Jul-2017	UTC
Peak Week Rep 2	DUB-S17-Live-Standard	Mon 10-Jul-2017	Sun 16-Jul-2017	UTC
Peak Week Rep 3	DUB-S18-SoS Report-Standard	Mon 23-Jul-2018	Sun 29-Jul-2018	UTC