

# QUEENSTOWN INTERNATIONAL AIRPORT

## ZQN

### S17 Start of season Report

Key Statistics	S16 Operated	S17 Season Start	Percentage Change
Air Transport Movements	8,085	9,082	▲ 12%
Total Seats	1,291,552	1,449,791	▲ 12%
Seats per Passenger ATM	160	160	

Contents	Page
Airline Rank by ATM's and Seats	2
Aircraft Type Rankings by ATM's and Seats	3
Peak Week Departure Frequencies by Carrier	4
Destination Rankings by ATM's and Seats	5
Runway Peak Week Utilisation	6
Domestic Terminal Peak Week Utilisation	7
International Terminal Peak Week Utilisation	8
Total Terminal Peak Week Utilisation	9
Glossary	10

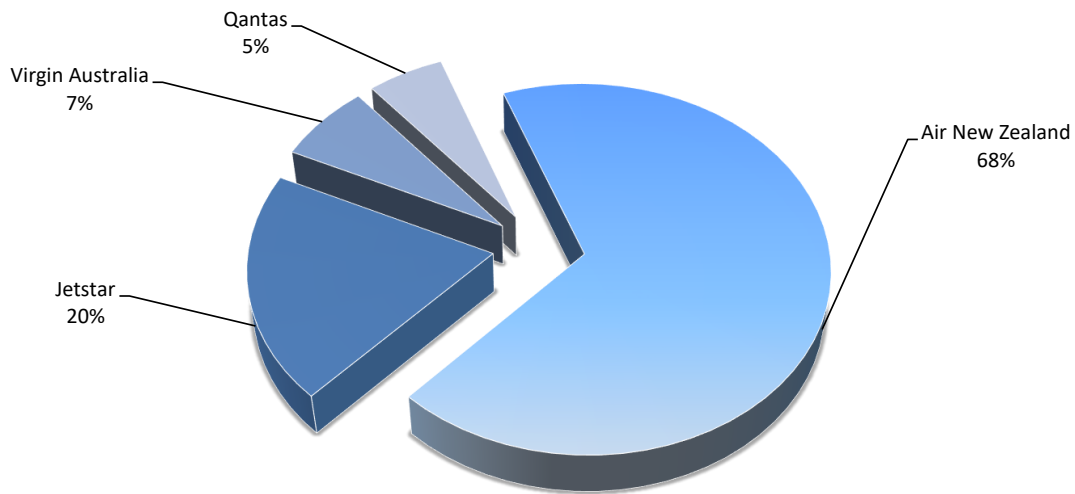
Data in this report is current as of 15 March 2017

No warranty whether expressed or implied as to the completeness, accuracy, fitness for purpose, or satisfactory quality is given by ACL regarding the information in this report, which is provided by third parties. Accordingly, ACL excludes all liability with regard to such data.

The contents of this report may not be reproduced without the written consent of ACL.

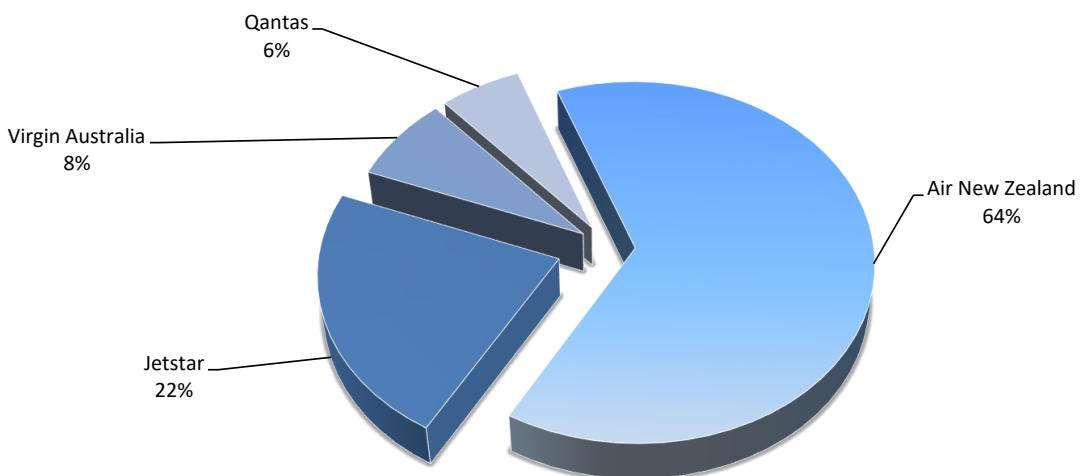
## Airlines by Air Transport Movements (ATMs)

Airline	Movements
Air New Zealand	6,138
Jetstar	1,814
Virgin Australia	628
Qantas	502



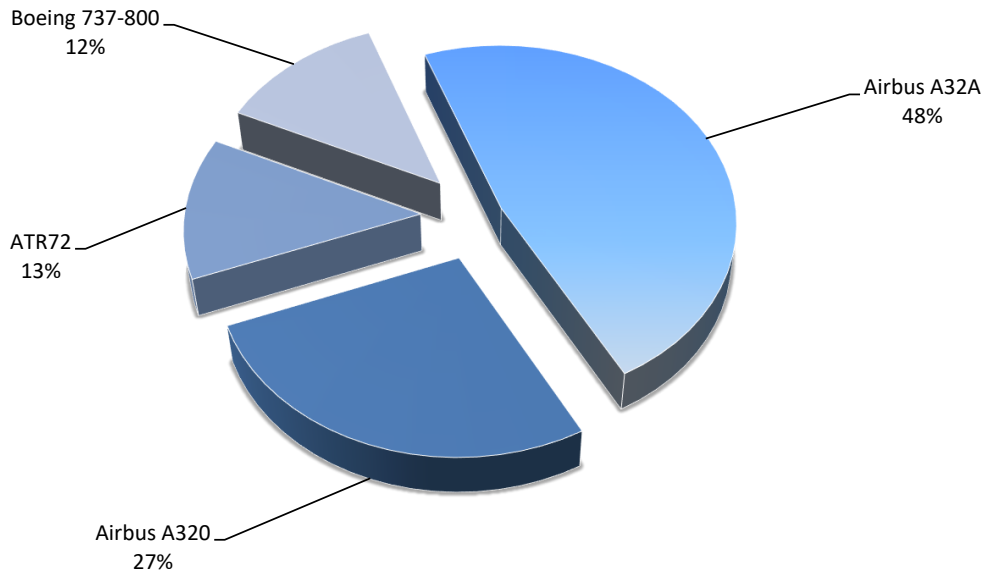
## Airlines by Seats

Airline	Seats
Air New Zealand	926,091
Jetstar	326,520
Virgin Australia	110,528
Qantas	86,652



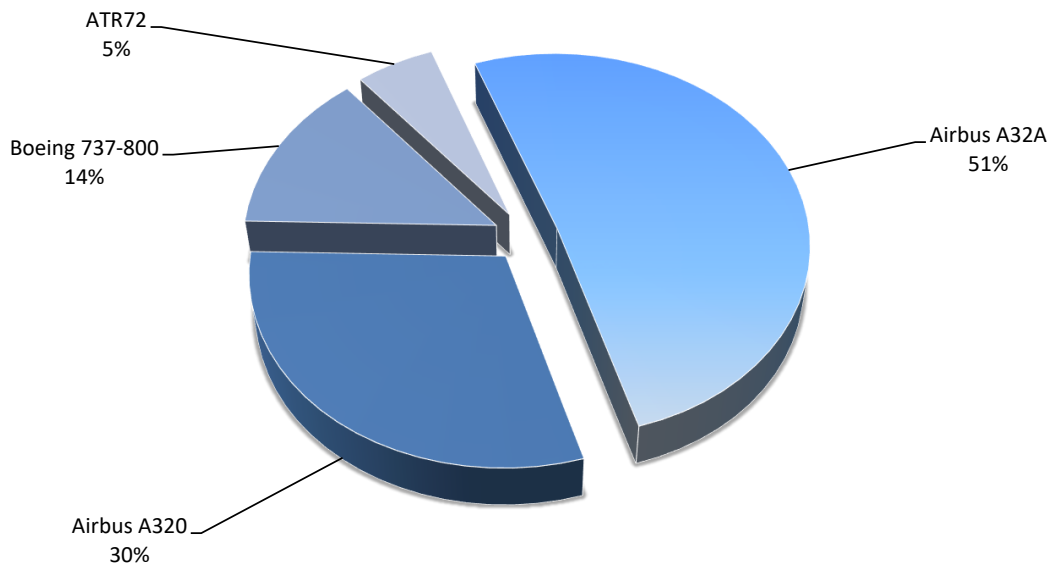
## Aircraft Types by Air Transport Movements (ATMs)

Airline	Movements
Airbus A32A	4,320
Airbus A320	2,464
ATR72	1,168
Boeing 737-800	1,130



## Aircraft Types by Seats

Airline	Seats
Airbus A32A	738,207
Airbus A320	435,048
Boeing 737-800	197,180
ATR72	79,356



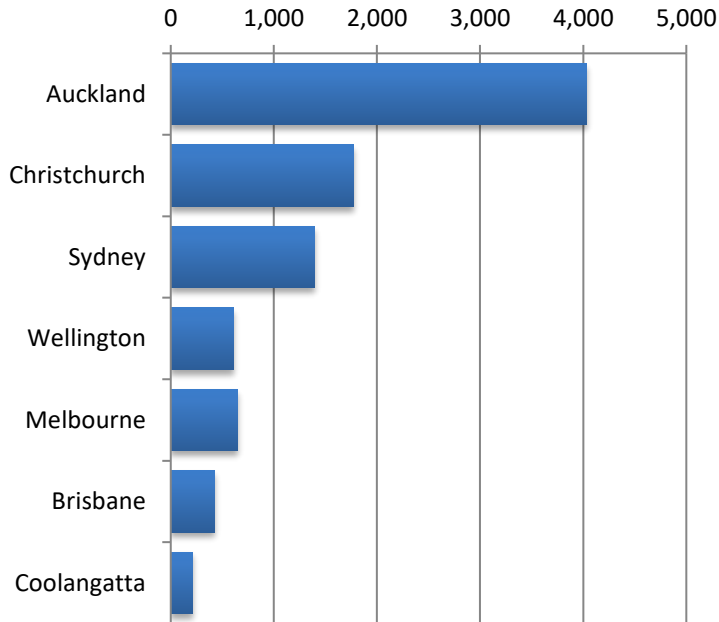
## QUEENSTOWN INTERNATIONAL AIRPORT

### PEAK WEEK DEPARTURE FREQUENCIES - BY CARRIER

S17 Week 03 to 09 July 2017

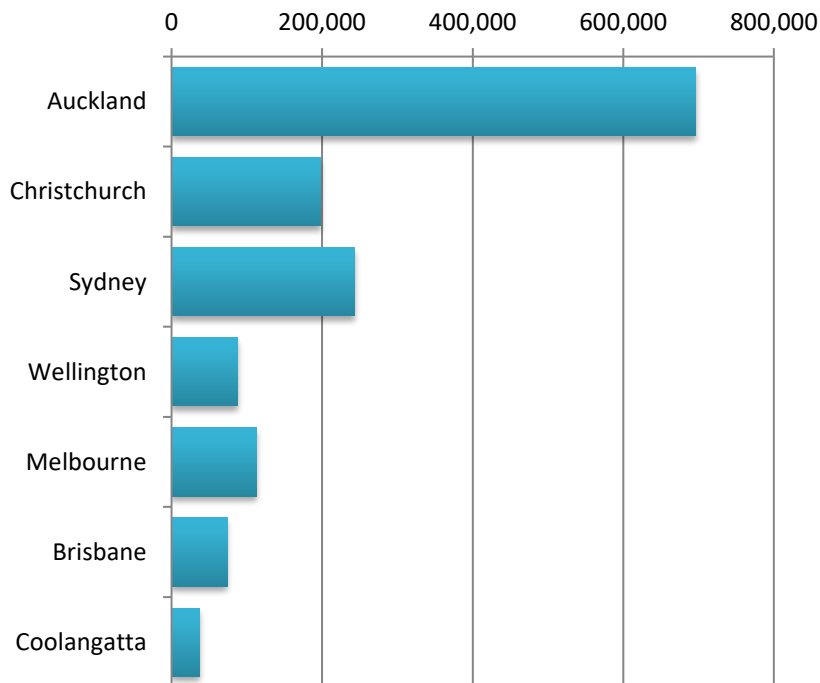
	OPERATOR	AIRPORT	S16		S17		SEATS +/-	ATMS +/-
			SEATS	ATMS	SEATS	ATMS		
JQ	Jetstar	AKL Auckland International	2,880	16	2,700	15	-180	-1
		MEL Melbourne	1,260	7	1,260	7	0	0
		OOL Gold Coast Coolangatta	720	4	900	5	180	1
		SYD Sydney Kingsford Smith	1,260	7	1,260	7	0	0
<b>JQ Total</b>			<b>6,120</b>	<b>34</b>	<b>6,120</b>	<b>34</b>	<b>0</b>	<b>0</b>
NZ	Air New Zealand	AKL Auckland International	8,208	48	11,100	65	2,892	17
		CHC Christchurch International	2,938	22	3,140	28	202	6
		MEL Melbourne	1,344	8	1,512	9	168	1
		SYD Sydney Kingsford Smith	1,848	11	2,016	12	168	1
		WLG Wellington International	1,401	10	1,708	13	307	3
<b>NZ Total</b>			<b>15,739</b>	<b>99</b>	<b>19,476</b>	<b>127</b>	<b>3,737</b>	<b>28</b>
QF	Qantas	BNE Brisbane International	336	2	348	2	12	0
		SYD Sydney Kingsford Smith	1,344	8	1,740	10	396	2
<b>QF Total</b>			<b>1,680</b>	<b>10</b>	<b>2,088</b>	<b>12</b>	<b>408</b>	<b>2</b>
VA	Virgin Australia	BNE Brisbane International	1,760	10	1,936	11	176	1
		SYD Sydney Kingsford Smith	880	5	1,056	6	176	1
<b>VA Total</b>			<b>2,640</b>	<b>15</b>	<b>2,992</b>	<b>17</b>	<b>352</b>	<b>2</b>

## Air Transport Movements by Destination



Destination	ATM'S
Auckland	4,030
Christchurch	1,773
Sydney	1,395
Wellington	607
Melbourne	647
Brisbane	420
Coolangatta	208

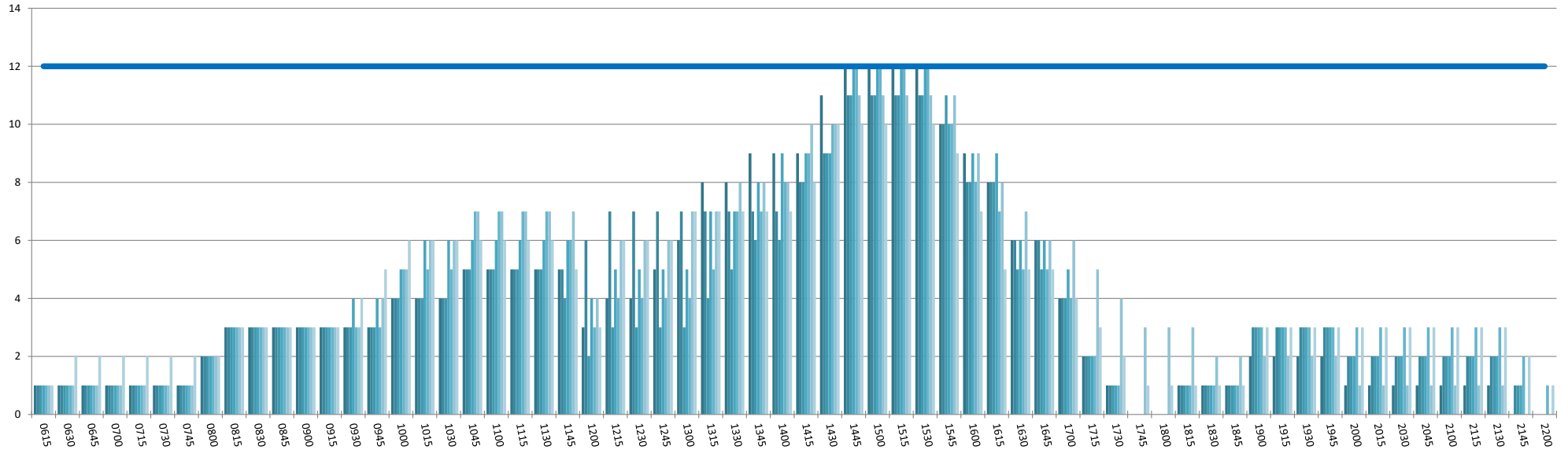
## Air Transport Seats by Destination



Destination	SEATS
Auckland	695,958
Christchurch	197,816
Sydney	243,364
Wellington	88,117
Melbourne	112,956
Brisbane	73,804
Coolangatta	37,440

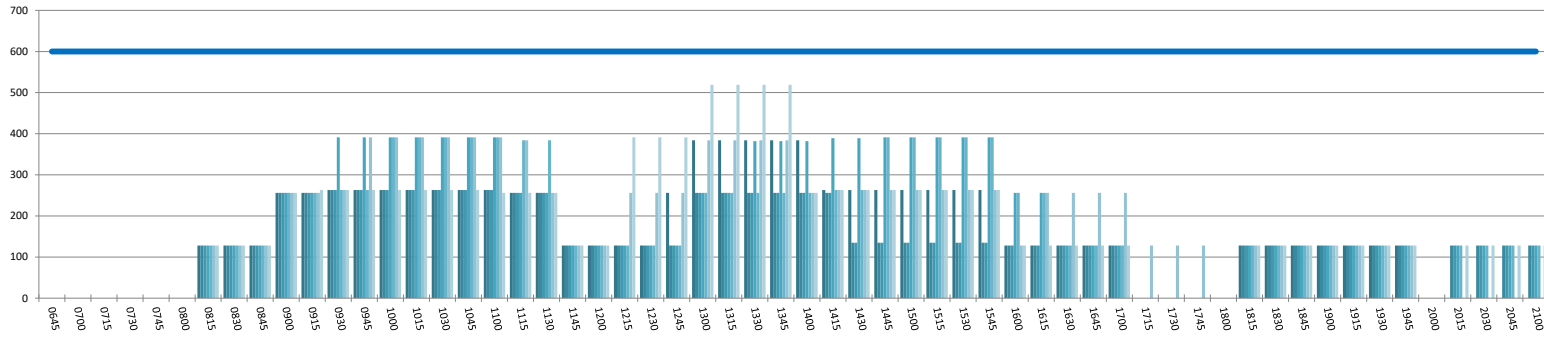
# RUNWAY TOTAL UTILISATION PER 60 MINUTES (ROLLING EVERY 15 MINUTES)

Peak Week Movements per Hour, Week 03-09 July 2017 All times LOCAL



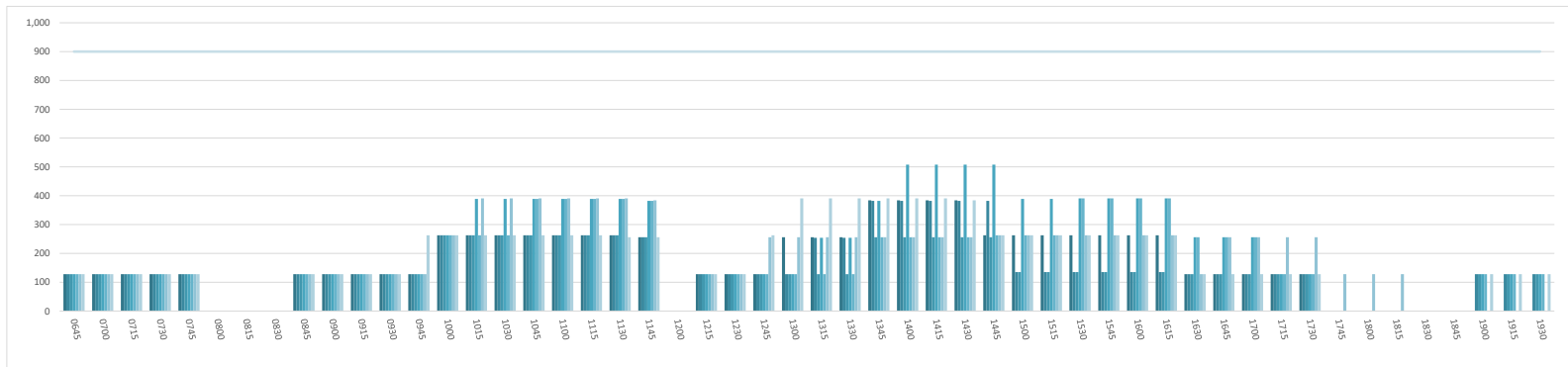
### DOMESTIC TERMINAL ARRIVALS UTILISATION PER 60 MINUTES (ROLLING EVERY 15 MINUTES)

Peak Week Movements per Hour - All times LOCAL



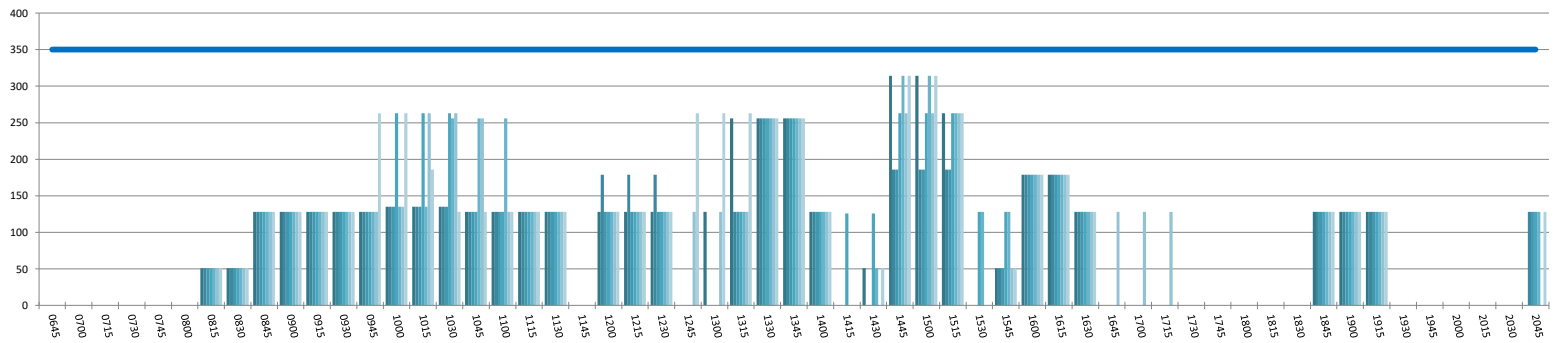
### DOMESTIC TERMINAL DEPARTURES UTILISATION PER 60 MINUTES (ROLLING EVERY 15 MINUTES)

Peak Week Movements per Hour - All times LOCAL



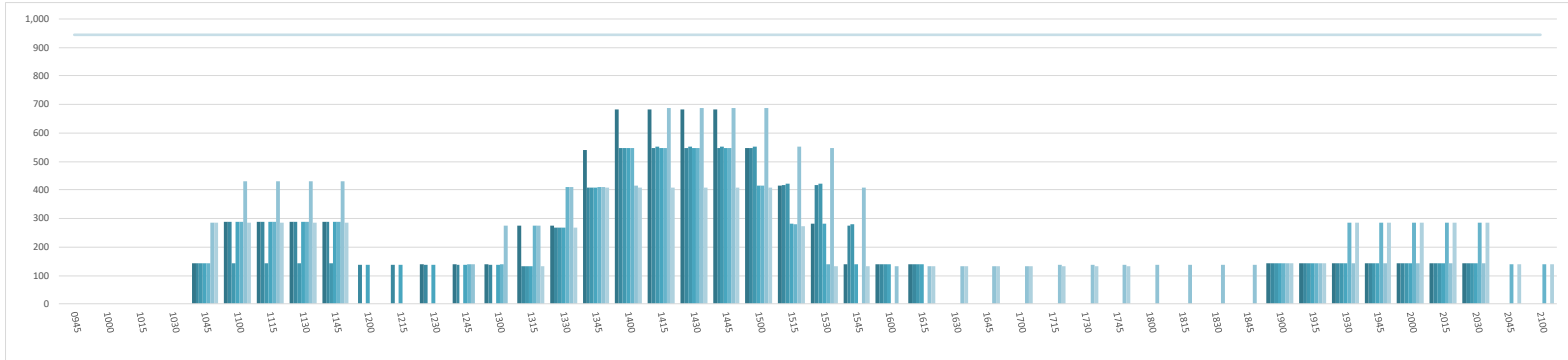
### DOMESTIC TERMINAL ARRIVALS UTILISATION PER 30 MINUTES (ROLLING EVERY 15 MINUTES)

Peak Week Movements per Hour - All times LOCAL



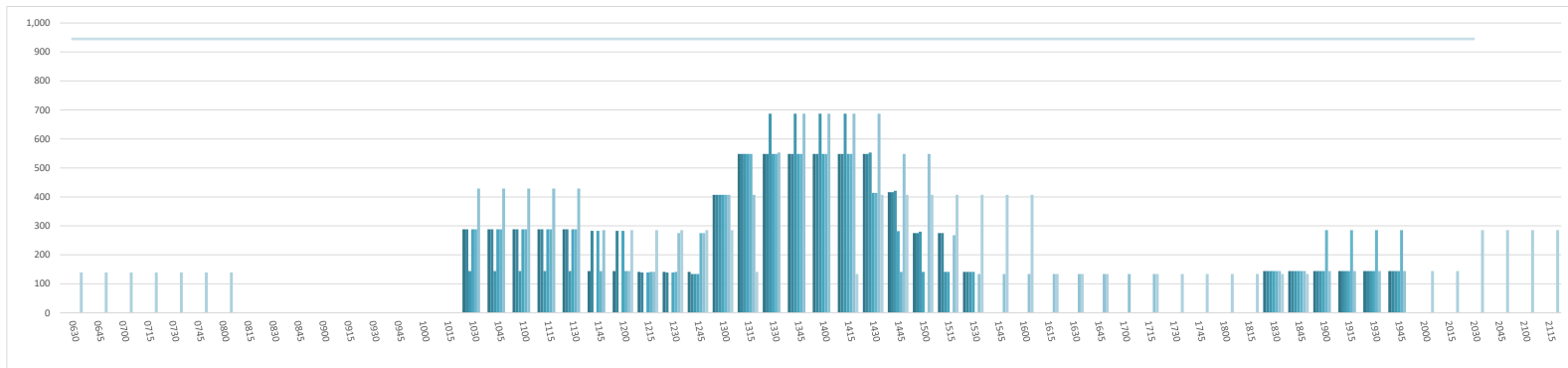
### INTERNATIONAL TERMINAL ARRIVALS UTILISATION PER 60 MINUTES (ROLLING EVERY 15 MINUTES)

Peak Week Movements per Hour - All times LOCAL



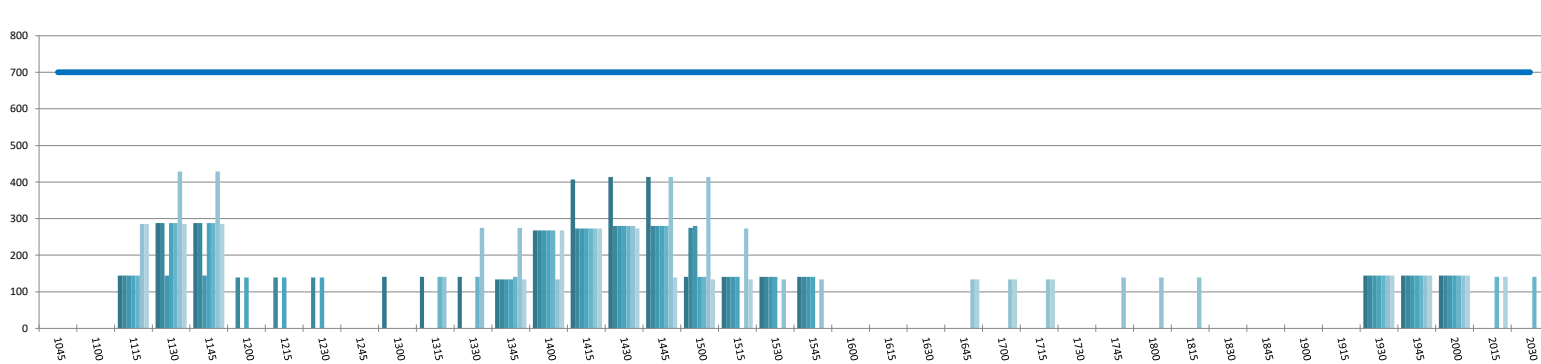
### INTERNATIONAL TERMINAL DEPARTURES UTILISATION PER 60 MINUTES (ROLLING EVERY 15 MINUTES)

Peak Week Movements per Hour - All times LOCAL



### INTERNATIONAL TERMINAL ARRIVALS UTILISATION PER 30 MINUTES (ROLLING EVERY 15 MINUTES)

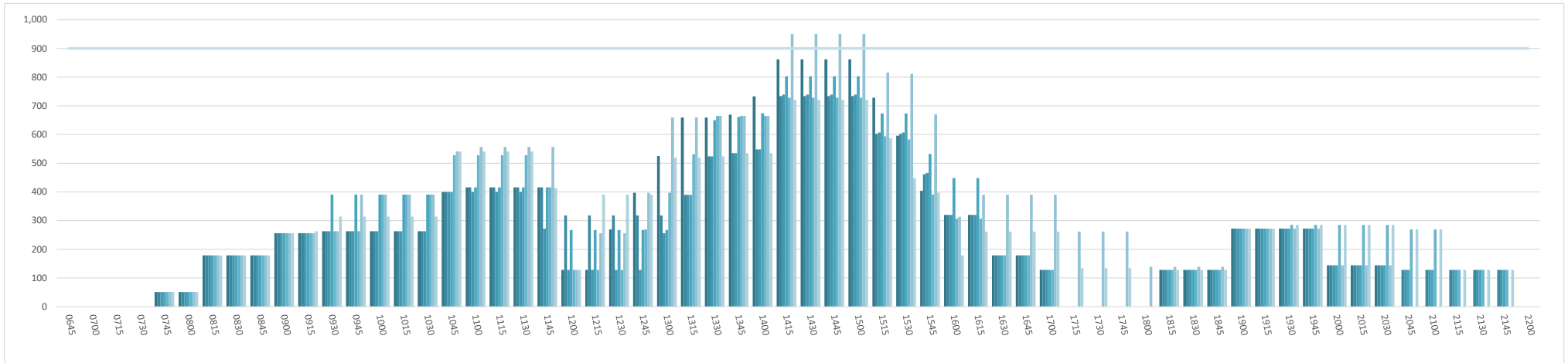
Peak Week Movements per Hour - All times LOCAL





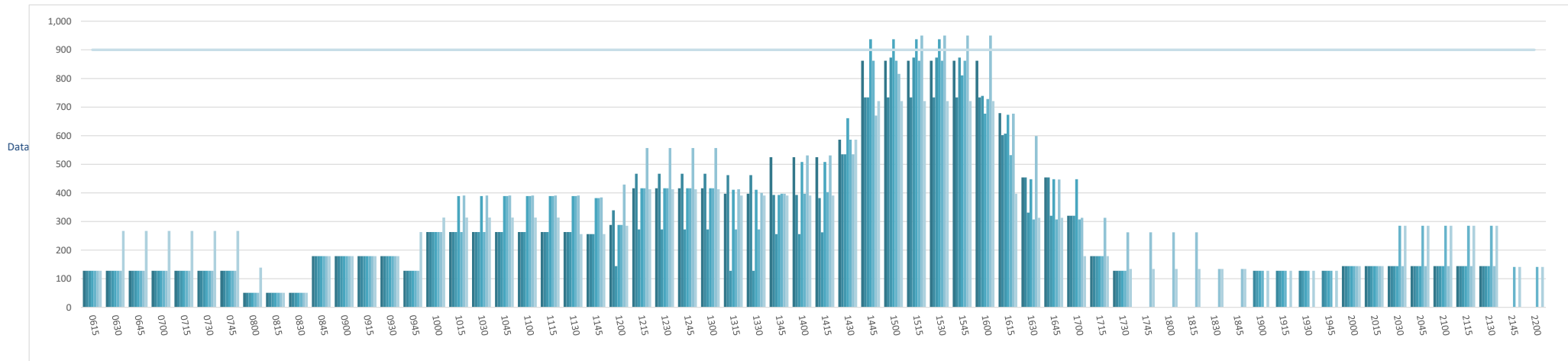
### ENTIRE TERMINAL PASSENGER ARRIVALS UTILISATION PER 60 MINUTES (ROLLING EVERY 15 MINUTES)

Peak Week Movements per Hour - All times LOCAL



### ENTIRE TERMINAL PASSENGER DEPARTURES UTILISATION PER 60 MINUTES (ROLLING EVERY 15 MINUTES)

Peak Week Movements per Hour - All times LOCAL



## GLOSSARY OF TERMS

---

<b>Air Transport Movement (ATM)</b>	A scheduled or charter passenger or freight aircraft movement.
<b>Allocation</b>	The allocation of slots such that demand is constrained to fit within declared scheduling limits.
<b>Passenger ATM</b>	A scheduled or charter <u>passenger</u> aircraft movement (ie, excluding all-cargo aircraft movements).
<b>Scheduling Limits</b>	Limiting parameters declared by the Airport Operator used in the coordination process.
<b>Seats</b>	The number of seats based on the aircraft configuration advised by the airline.
<b>Peak Week</b>	The Peak Week for S17 is 03 to 09 July 2017
<b>Data Snapshot</b>	All data used for this report was as held 15 March 2017

### GUIDE TO HISTOGRAMS

---

The histograms show the pattern of traffic by time of day against the appropriate scheduling limit. Each time period consist of seven columns representing the days-of-week, Monday through Sunday.