

WELLINGTON INTERNATIONAL AIRPORT WLG

S17 International Report (International Traffic)

Key Statistics	S16 Operated	S17 Season Start	Percentage Change
Air Transport Movements	3,855	3,774	▼ -2.1%
Total Seats	660,716	671,946	▲ 1.7%
Seats per Passenger ATM	171	178	

Contents	Page
Movements and Seats by Service Type	2
Peak Week Departure Frequencies by Carrier	3
Airlines by ATM's and Seats	4
Destinations by ATM's and Seats	5
Total Movements by Week	6
International Terminal - Passengers per 60 Minutes	7
Glossary	8

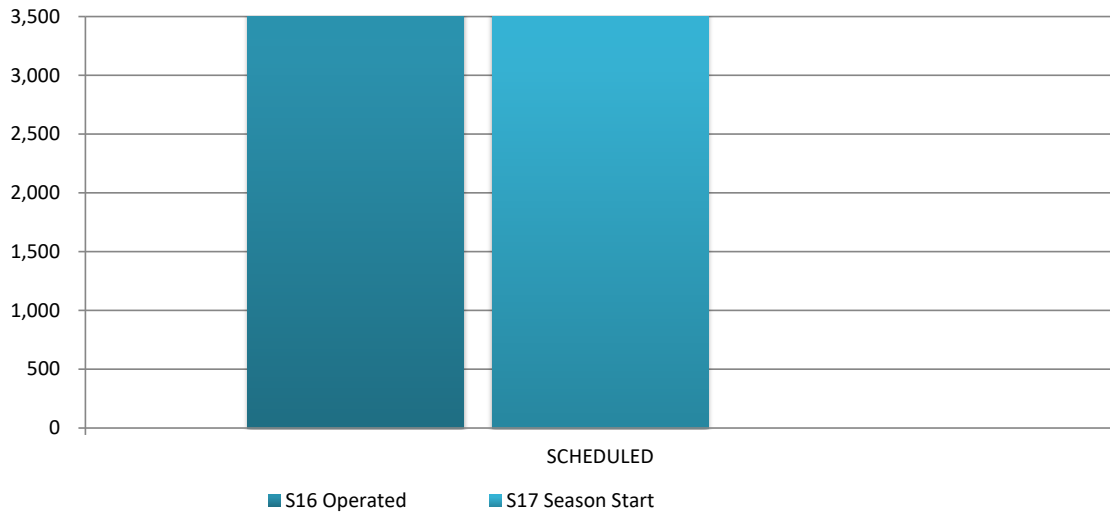
Singapore Airlines ** only operated part season of NS16

Data in this report is current as of 15 March 2017

No warranty whether expressed or implied as to the completeness, accuracy, fitness for purpose, or satisfactory quality is given by ACL regarding the information in this report, which is provided by third parties. Accordingly, ACL excludes all liability with regard to such data.

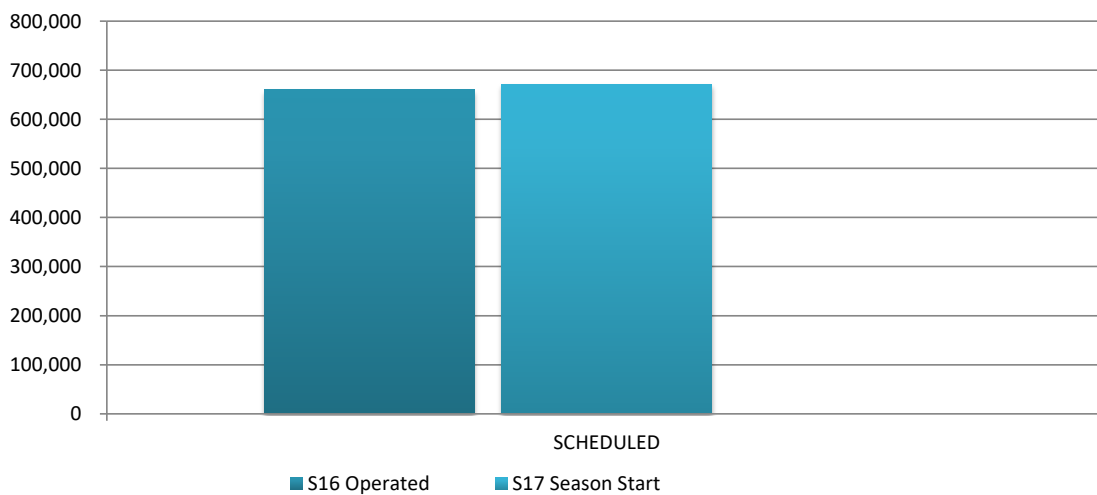
The contents of this report may not be reproduced without the written consent of ACL.

Full Season ATMs by Service Type



	S16 Operated	S17 Season Start		% CHANGE
SCHEDULED	3,855	3,774	▲	-2.1%
TOTAL	3,855	3,774	▲	-2.1%

Full Season Seats by Service Type



	S16 Operated	S17 Season Start		% CHANGE
SCHEDULED	660,716	671,946	▲	1.7%
TOTAL	660,716	671,946	▲	1.7%

WELLINGTON INTERNATIONAL AIRPORT

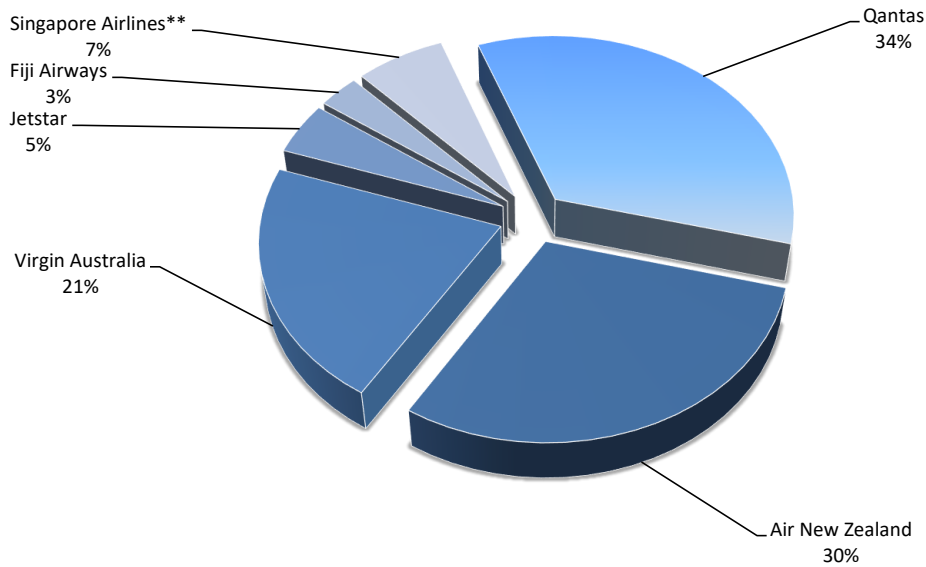
PEAK WEEK DEPARTURE FREQUENCIES - BY CARRIER

S17 Week 10 to 16 July

OPERATOR	AIRPORT	S16		S17		SEATS +/-	ATMS +/-		
		SEATS	ATMS	SEATS	ATMS				
FJ	Fiji Airways	NAN	Nadi International	284	2	284	2	0	0
FJ Total				284	2	284	2	0	0
JQ	Jetstar	MEL	Melbourne	720	5	0	0	-720	-5
		OOL	Gold Coast Coolangatta	540	3	360	2	-180	-1
JQ Total				1,260	8	360	2	-900	-6
NZ	Air New Zealand	MEL	Melbourne	1,008	6	1,008	6	0	0
		NAN	Nadi International	504	3	504	3	0	0
		SYD	Sydney Kingsford Smith	1,680	10	1,680	10	0	0
NZ Total				3,192	19	3,192	19	0	0
QF	Qantas	MEL	Melbourne	1,176	7	1,218	7	42	0
		SYD	Sydney Kingsford Smith	2,352	14	2,436	14	84	0
QF Total				3,528	21	3,654	21	126	0
SQ	Singapore Airlines	SIN	Singapore Changi	0	0	1,064	4	1,064	4
SQ Total				0	0	1,064	4	1,064	4
VA	Virgin Australia	BNE	Brisbane International	2,464	14	2,288	13	-176	-1
VA Total				2,464	14	2,288	13	-176	-1

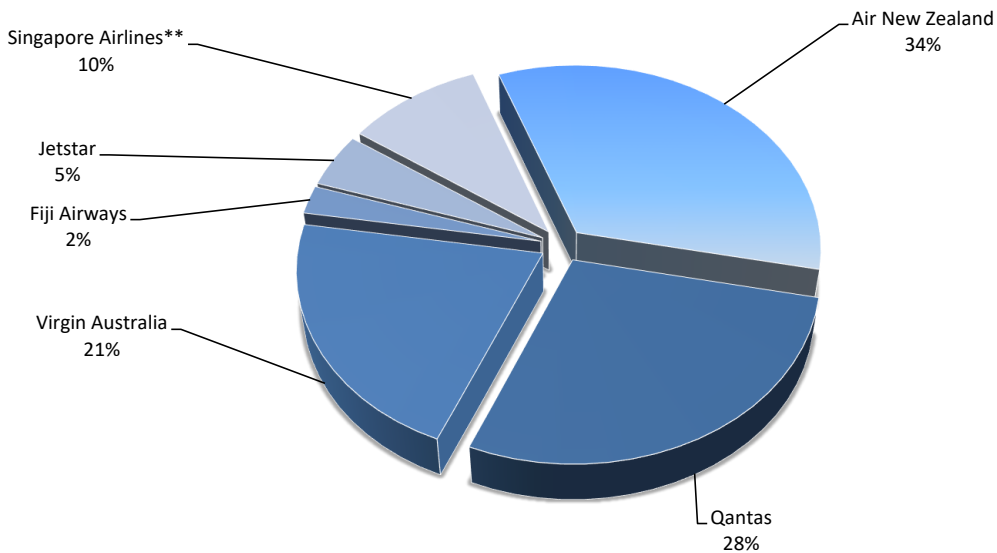
Airlines by Air Transport Movements (ATMs)

Airline	NS17 Movements	NS16	Diff
Qantas	1,303	1,302	0%
Air New Zealand	1,127	1,116	1%
Virgin Australia	807	844	-4%
Jetstar	175	431	-59%
Fiji Airways	114	118	-3%
Singapore Airlines**	248	44	

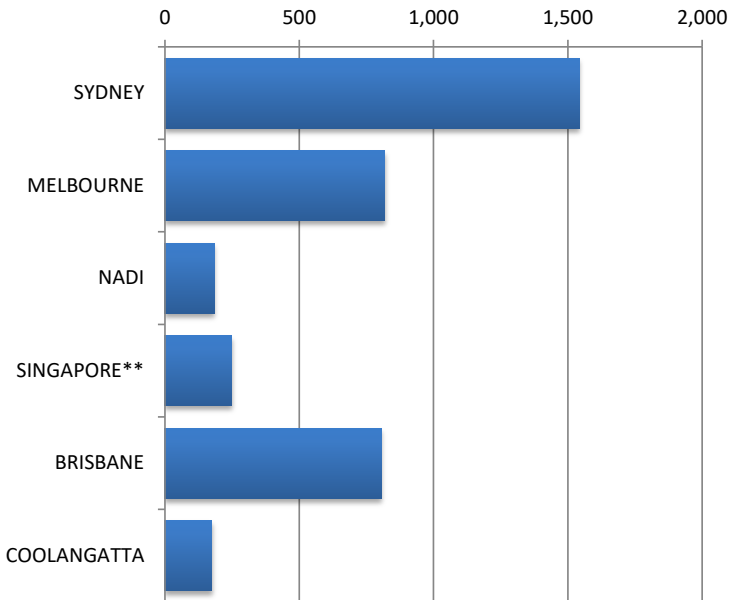


Airlines by Air Seats

Airline	NS17 Seats	NS16	Diff
Air New Zealand	226,722	187,488	21%
Qantas	189,336	218,736	-13%
Virgin Australia	142,032	148,544	-4%
Fiji Airways	16,388	17,024	-4%
Jetstar	31,500	77,220	-59%
Singapore Airlines**	65,968	11,704	



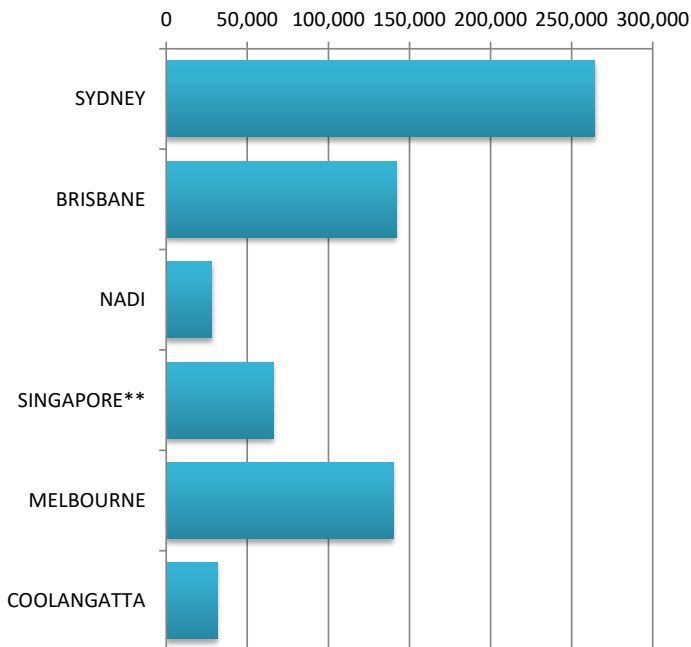
Air Transport Movements by Destination



Destination	NS17 ATM'S	NS16	Diff
SYDNEY	1,542	1,535	0%
MELBOURNE	818	1,063	-23%
NADI	184	184	0%
SINGAPORE**	248	44	
BRISBANE	807	844	-4%
COOLANGATTA	175	185	-5%

SINGAPORE** only operated part season of NS16

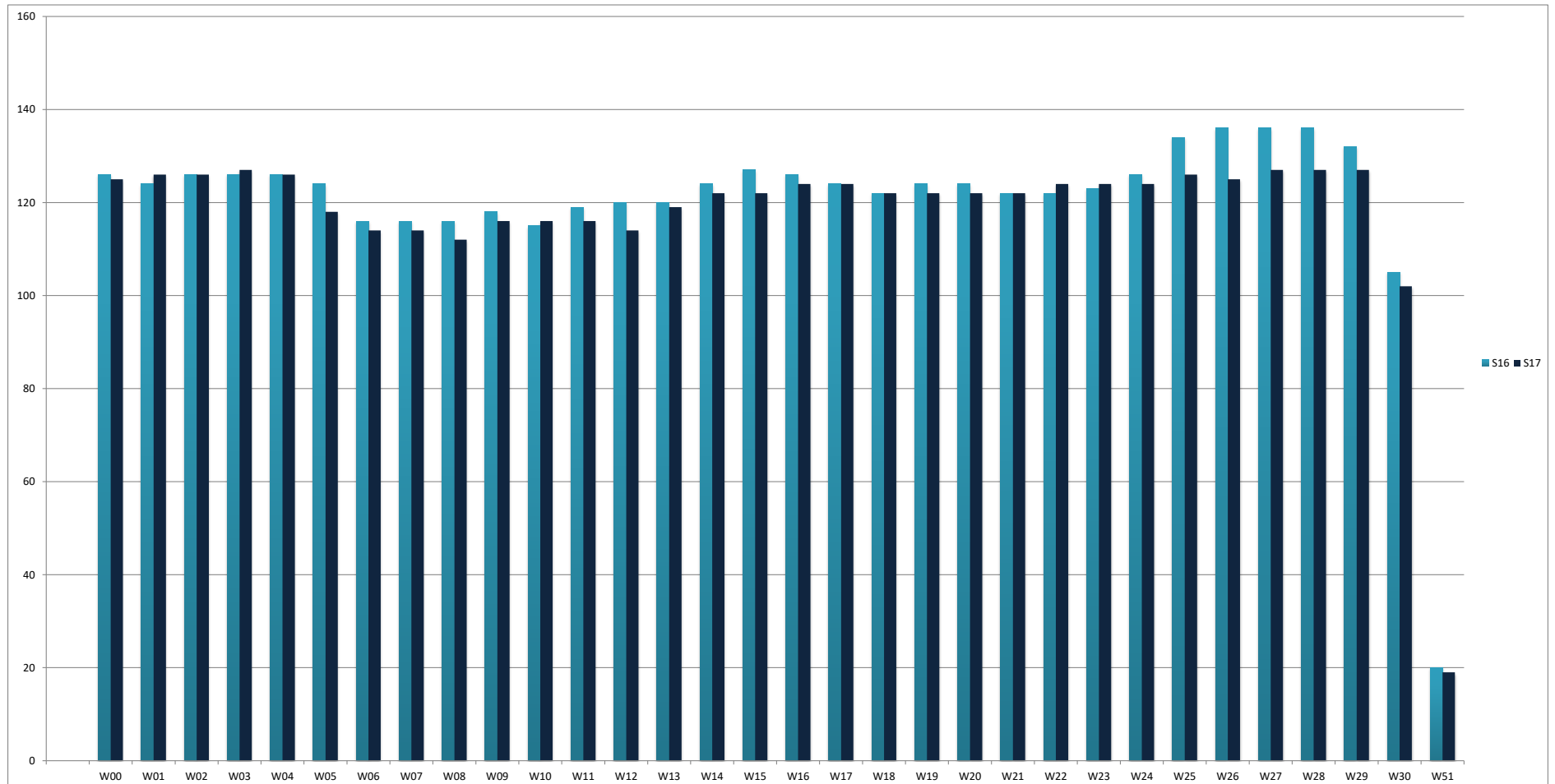
Air Transport Seats by Destination



Destination	NS17 SEATS	NS16	Diff
SYDNEY	264,264	257,880	2%
BRISBANE	142,032	148,544	-4%
NADI	28,148	28,112	0%
SINGAPORE**	65,968	11,704	
MELBOURNE	140,034	181,176	-23%
COOLANGATTA	31,500	33,300	-5%

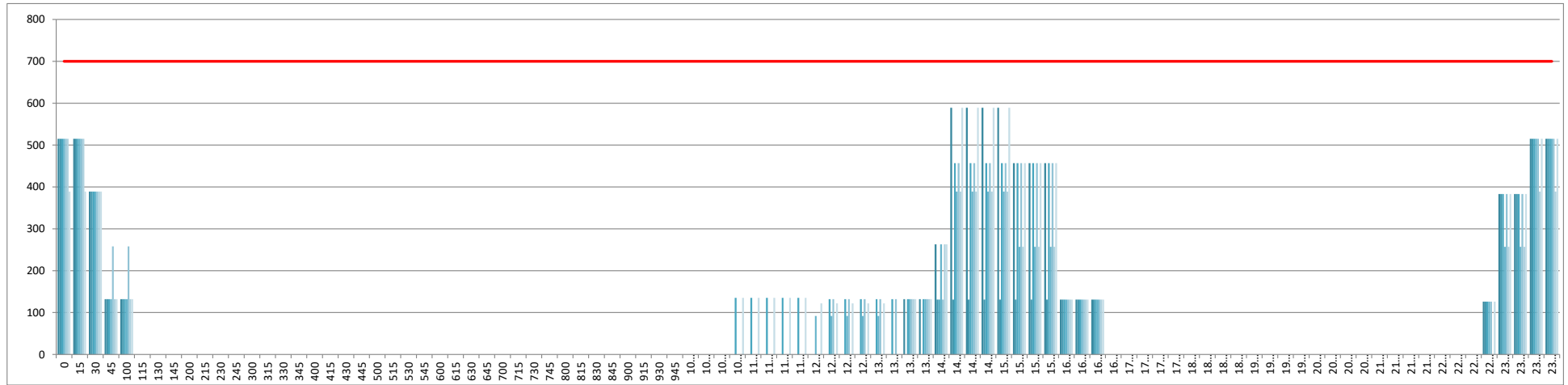
SINGAPORE** only operated part season of NS16

Air Transport Movements by Week for S16 vs S17 Season



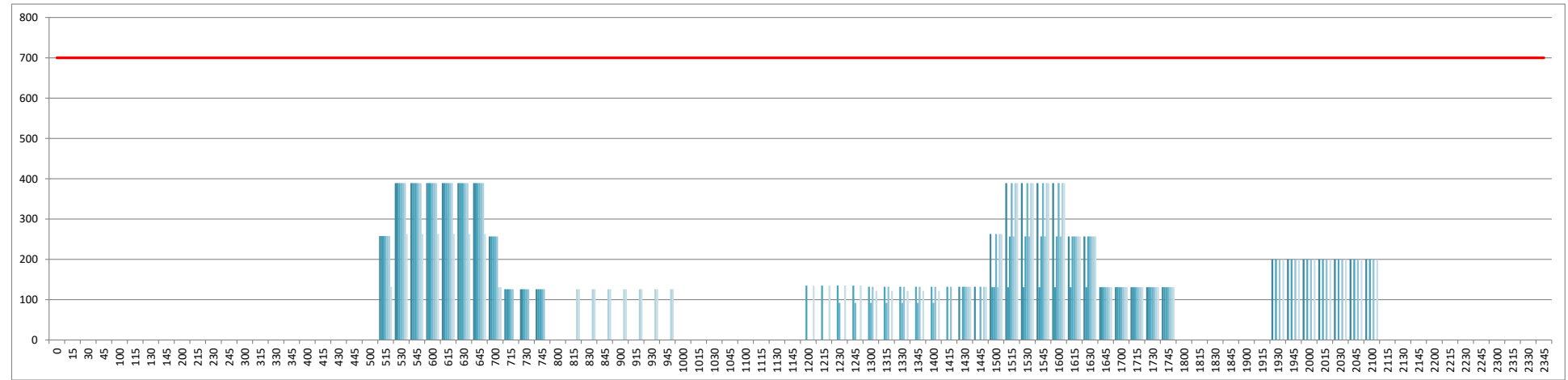
INTERNATIONAL TERMINAL ARRIVALS (PER 60 MINUTES)

Week Movements per Hour - All times LOCAL



INTERNATIONAL TERMINAL DEPARTURES (PER 60 MINUTES)

Week Movements per Hour - All times LOCAL



GLOSSARY OF TERMS

Air Transport Movement (ATM)	A scheduled or charter passenger or freight aircraft movement.
Allocation	The allocation of slots such that demand is constrained to fit within declared scheduling limits.
Passenger ATM	A scheduled or charter <u>passenger</u> aircraft movement (ie, excluding all-cargo aircraft movements).
Scheduling Limits	Limiting parameters declared by the Airport Operator used in the coordination process.
Seats	The number of seats based on the aircraft configuration advised by the airline.
Average Week	Week 10 to 16 July 2017
Data Snapshot	All data used for this report was as held 15 March 2017

GUIDE TO HISTOGRAMS

The histograms show the pattern of traffic by time of day against the appropriate scheduling limit. Each time period consist of seven columns representing the days-of-week, Monday through Sunday.