

Warsaw Airport (WAW)

Summer 2017 (S17)



Start of Season Report

Report Date: Thu 23-Mar-2017

Headlines

	S17 Start	vs. S16 Start	vs. S16 End
Total Air Transport Movements (Passenger & Freight)	105,440	11.2%	15.9%
Total Passenger Air Transport Movements	103,401	12.3%	17.1%
Total Passenger Air Transport Movement Seats	13,576,246	22.1%	27.5%
Average Seats per Passenger Air Transport Movement	131	8.7%	8.8%
Percentage of allocated slots cleared as requested (OK)	79.1%		

Contents

Page	Content
2	Runway Scheduling Limits
3	Peak Week - Initial Coordination Analysis
3	ATM Allocation by Operator (Full season and Peak Week Comparison)
4	Peak Week - Allocation and Slot Adjustment Distribution by Operator
5	Significant Route Changes
6	Full Season - ATM Analysis
7	Full Season - PATM Seats Analysis
8	Full Season - Terminal Analysis
9	Full Season - Aircraft Size Analysis
10	Full Season - Seasonality
11	Peak Week - Hourly Runway Demand
12	Peak Week - Hourly Runway Allocation
13	Peak Week - Hourly Runway Allocation Comparison (S17 Start vs. S16 Start)
14	Peak Week - Hourly Runway Allocation Comparison (S17 Start vs. S16 End)
15	Coordinated Night Movements
16	Peak Week Histogram - Arrival Movements (R10) - All Terminals - All Operators
18	Peak Week Histogram - Departure Movements (R10) - All Terminals - All Operators
20	Peak Week Histogram - Arrival Movements (R10) - All Terminals - All Operators
22	Peak Week Histogram - Arrival Passengers (T60/10) - 1D - All Operators
24	Peak Week Histogram - Departure Passengers (T60/10) - 1D - All Operators
26	Peak Week Histogram - Arrival Passengers (T60/10) - 1I - All Operators
28	Peak Week Histogram - Departure Passengers (T60/10) - 1I - All Operators
30	Peak Week Histogram - Arrival Passengers (T30/10) - 1I - All Operators
32	Peak Week Histogram - Departure Passengers (T30/10) - 1I - All Operators
34	Peak Week Histogram - Arrival Passengers (T60/10) - All Terminals1I - All Operators
36	Glossary

S16 scheduling season runs from Sun 27-Mar-2016 to Sat 29-Oct-2016 (217 days).

S17 scheduling season runs from Sun 26-Mar-2017 to Sat 28-Oct-2017 (217 days).

Disclaimer

No warranty whether expressed or implied as to the completeness, accuracy, fitness for purpose, or satisfactory quality is given by ACL regarding the information in this report, which is provided by third parties. Accordingly, ACL excludes all liability with regard to such data.

The contents of this report may not be reproduced without the written consent of ACL.

Peak Week - Initial Coordination Analysis



Operator	S17 HISTORIC SLOTS				HISTORIC RECLAIM STATISTICS				NEW SLOT REQUESTS						Total Demand at Initial Submissions	Total Allocation (SAL)	% of demand with a slot allocated
	Historic slots	Lost Histories (N80 & MU)	Unclaimed Histories	Reclaimed Histories	Incl. Time Change	Incl. Seat Increase	Incl. Day change	Incl. AxB or DxA swap	Demand - New Requests	Allocated - Year Round Incumbent	Allocated - Year Round New Entrant	Allocated - New Incumbent	Allocated - New Entrant	Allocated - "Fill-in"			
Adria Airways	-	-	-	-	0.0%	0.0%	0.0%	0.0%	10	-	-	10	-	-	10	10	100.0%
Aegean Airlines	-	-	10	10	80.0%	0.0%	0.0%	0.0%	2	-	-	2	-	-	12	12	100.0%
Aer Lingus	-	-	8	8	100.0%	0.0%	0.0%	0.0%	-	-	-	-	-	-	8	8	100.0%
Aeroflot	-	-	28	28	0.0%	50.0%	0.0%	0.0%	14	14	-	-	-	-	42	42	100.0%
Aigle Azur	-	-	1	1	0.0%	0.0%	0.0%	0.0%	-	-	-	-	-	-	1	1	100.0%
Air Berlin	-	-	36	36	66.7%	0.0%	0.0%	0.0%	18	-	-	18	-	-	54	54	100.0%
Air Cairo	-	-	10	10	0.0%	0.0%	0.0%	0.0%	-	-	-	-	-	-	10	10	100.0%
Air Canada	-	-	-	0	0.0%	0.0%	0.0%	0.0%	8	-	-	8	-	-	8	8	100.0%
Air China	-	-	-	0	0.0%	0.0%	0.0%	0.0%	8	-	-	8	-	-	8	8	100.0%
Air France	-	-	54	54	74.1%	0.0%	0.0%	0.0%	-	-	-	-	-	-	54	54	100.0%
Air Malta	-	-	-	-	0.0%	0.0%	0.0%	0.0%	2	-	-	2	-	-	2	2	100.0%
Air Nostrum	-	-	-	-	0.0%	0.0%	0.0%	0.0%	-	-	-	-	-	-	-	-	-
Air Serbia	-	-	-	-	0.0%	0.0%	0.0%	0.0%	-	-	-	-	-	-	-	-	-
AirBaltic	-	-	10	10	100.0%	0.0%	0.0%	0.0%	4	-	-	4	-	-	14	14	100.0%
Alitalia	-	-	14	14	0.0%	0.0%	0.0%	0.0%	-	-	-	-	-	-	14	14	100.0%
Arkefly	-	-	1	1	100.0%	0.0%	0.0%	0.0%	3	-	-	3	-	-	4	4	100.0%
Austrian Airlines	-	-	42	42	0.0%	66.7%	0.0%	0.0%	-	-	-	-	-	-	42	42	100.0%
Belavia Belarusian Airlines	-	-	10	10	0.0%	0.0%	0.0%	0.0%	-	-	-	-	-	-	10	10	100.0%
British Airways	-	-	28	28	75.0%	0.0%	0.0%	0.0%	-	-	-	-	-	-	28	28	100.0%
Brussels Airlines	-	-	32	32	75.0%	0.0%	0.0%	0.0%	-	-	-	-	-	-	32	32	100.0%
BUL AIR	-	-	6	6	0.0%	0.0%	0.0%	0.0%	-	-	-	-	-	-	6	6	100.0%
Bulgaria Air	-	-	-	-	0.0%	0.0%	0.0%	0.0%	-	-	-	-	-	-	-	-	-
Bulgarian Air Charter	-	-	-	-	0.0%	0.0%	0.0%	0.0%	10	-	-	2	8	-	10	10	100.0%
Corendon Airlines	-	-	10	10	0.0%	0.0%	0.0%	0.0%	-	-	-	-	-	-	10	10	100.0%
CSA Czech Airlines	-	-	36	36	0.0%	0.0%	0.0%	0.0%	-	-	-	-	-	-	36	36	100.0%
El Al Israel Airlines	-	-	14	14	42.9%	0.0%	0.0%	0.0%	4	4	-	-	-	-	18	18	100.0%
ELLINAIR S.A.	-	-	2	2	0.0%	0.0%	0.0%	0.0%	4	-	-	4	-	-	6	6	100.0%
Emirates	-	-	14	14	0.0%	0.0%	0.0%	0.0%	-	-	-	-	-	-	14	14	100.0%
Enter Air	-	-	63	63	3.2%	0.0%	0.0%	0.0%	78	-	-	78	-	-	141	141	100.0%
Europe Airpost	-	-	1	1	0.0%	0.0%	0.0%	0.0%	-	-	-	-	-	-	1	1	100.0%
European Air Transport (DHL)	-	-	10	10	50.0%	0.0%	0.0%	0.0%	-	-	-	-	-	-	10	10	100.0%
Eurowings	-	-	24	24	8.3%	8.3%	0.0%	0.0%	-	-	-	-	-	-	24	24	100.0%
Federal Express	-	-	8	8	50.0%	0.0%	0.0%	0.0%	-	-	-	-	-	-	8	8	100.0%
Finnair	-	-	28	28	0.0%	0.0%	0.0%	0.0%	-	-	-	-	-	-	28	28	100.0%
FlyEgypt	-	-	-	-	0.0%	0.0%	0.0%	0.0%	-	-	-	-	-	-	-	-	-
Germanwings	-	-	-	-	0.0%	0.0%	0.0%	0.0%	-	-	-	-	-	-	-	-	-
R AIRLINES AND TOURISM LTD	-	-	10	10	0.0%	0.0%	0.0%	0.0%	-	-	-	-	-	-	10	10	100.0%
KLM Royal Dutch Airlines	-	-	42	42	0.0%	95.2%	0.0%	0.0%	-	-	-	-	-	-	42	42	100.0%
LOT Polish Airlines	-	-	1,790	1,790	30.4%	40.9%	0.0%	0.0%	223	-	-	223	-	-	2,013	2,013	100.0%
Lufthansa	-	-	98	98	93.5%	18.4%	0.0%	0.0%	-	-	-	-	-	-	98	98	100.0%
Norwegian	-	-	24	24	8.3%	0.0%	0.0%	0.0%	4	-	-	4	-	-	28	28	100.0%
Nouvelair Tunisie	-	-	4	4	0.0%	0.0%	0.0%	0.0%	-	-	-	-	-	-	4	4	100.0%
Pegasus Airlines	-	-	6	6	66.7%	0.0%	0.0%	0.0%	4	-	-	4	-	-	10	10	100.0%
Qatar Airways	-	-	14	14	21.4%	0.0%	0.0%	0.0%	-	-	-	-	-	-	14	14	100.0%
Ryanair	-	-	-	-	0.0%	0.0%	0.0%	0.0%	98	84	-	14	-	-	98	98	100.0%
SAS Scandinavian	-	-	36	36	69.4%	27.8%	0.0%	0.0%	-	-	-	-	-	-	36	36	100.0%
Small Planet Airlines Poland	-	-	68	68	30.9%	19.1%	1.5%	0.0%	72	-	-	72	-	2	140	140	100.0%
SprintAir	-	-	10	10	50.0%	0.0%	0.0%	0.0%	-	-	-	-	-	-	10	10	100.0%
SprintAir Cargo	-	-	10	10	0.0%	0.0%	0.0%	0.0%	-	-	-	-	-	-	10	10	100.0%
Star Air	-	-	-	-	0.0%	0.0%	0.0%	0.0%	-	-	-	-	-	-	-	-	-
SunExpress	-	-	-	-	0.0%	0.0%	0.0%	0.0%	4	-	-	4	-	-	4	4	100.0%
Swiss International	-	-	38	38	50.0%	63.2%	0.0%	0.0%	-	-	-	-	-	-	38	38	100.0%
Tailwind Airlines	-	-	2	2	0.0%	0.0%	0.0%	0.0%	-	-	-	-	-	-	2	2	100.0%
TAP Portugal	-	-	4	4	100.0%	0.0%	0.0%	0.0%	14	-	8	-	6	-	18	18	100.0%
TNT Airways	-	-	10	10	0.0%	0.0%	0.0%	0.0%	-	-	-	-	-	-	10	10	100.0%
Travel Service	-	-	5	5	0.0%	0.0%	0.0%	0.0%	3	-	-	3	-	-	8	8	100.0%
Travel Service Polska	-	-	35	35	0.0%	0.0%	0.0%	5.7%	67	-	-	67	-	-	102	102	100.0%
Tunisair	-	-	-	-	0.0%	0.0%	0.0%	0.0%	2	-	-	2	-	-	2	2	100.0%
Turkish Airlines	-	-	10	10	0.0%	100.0%	0.0%	0.0%	-	-	-	-	-	-	10	10	100.0%
Ukraine International	-	-	32	32	0.0%	0.0%	0.0%	0.0%	-	-	-	-	-	-	32	32	100.0%
UPS Airlines	-	-	18	18	22.2%	0.0%	0.0%	0.0%	-	-	-	-	-	-	18	18	100.0%
VOYAGE AIR LTD	-	-	-	-	0.0%	0.0%	0.0%	0.0%	-	-	-	-	-	-	-	-	-
Vueling	-	-	6	6	100.0%	0.0%	0.0%	0.0%	-	-	-	-	-	-	6	6	100.0%
Wizz Air	-	-	283	283	60.8%	37.8%	0.0%	0.0%	20	-	-	20	-	-	303	303	100.0%
WOW Air	-	-	4	4	100.0%	100.0%	0.0%	0.0%	-	-	-	-	-	-	4	4	100.0%
TOTAL	-	-	3,059	3,059	34.7%	32.8%	0.0%	0.1%	676	102	8	552	14	2	3,735	3,735	100.0%

Peak Week - Allocation and Slot Adjustment Distribution by Operator

Schedule: S17 Start



Operator	S17 allocated ATMs	SLOT ADJUSTMENTS (MINUTES OFF REQUESTED TIME)														Requests with NO slot allocated
		0	5	10	15	20	25	30	35	40	45	50	55	60	>60	
Adria Airways	10	60.0%	20.0%	0.0%	0.0%	20.0%	0.0%	0.0%	0.0%	0.0%	0.0%	0.0%	0.0%	0.0%	0.0%	-
Aegean Airlines	12	91.7%	8.3%	0.0%	0.0%	0.0%	0.0%	0.0%	0.0%	0.0%	0.0%	0.0%	0.0%	0.0%	0.0%	-
Aer Lingus	8	25.0%	75.0%	0.0%	0.0%	0.0%	0.0%	0.0%	0.0%	0.0%	0.0%	0.0%	0.0%	0.0%	0.0%	-
Aeroflot	42	100.0%	0.0%	0.0%	0.0%	0.0%	0.0%	0.0%	0.0%	0.0%	0.0%	0.0%	0.0%	0.0%	0.0%	-
Aigle Azur	1	0.0%	0.0%	0.0%	0.0%	0.0%	100.0%	0.0%	0.0%	0.0%	0.0%	0.0%	0.0%	0.0%	0.0%	-
Air Berlin	54	44.4%	22.2%	16.7%	16.7%	0.0%	0.0%	0.0%	0.0%	0.0%	0.0%	0.0%	0.0%	0.0%	0.0%	-
Air Cairo	10	100.0%	0.0%	0	0.0%	0.0%	0.0%	0.0%	0.0%	0.0%	0.0%	0.0%	0.0%	0.0%	0.0%	-
Air Canada	8	100.0%	0.0%	0	0.0%	0.0%	0.0%	0.0%	0.0%	0.0%	0.0%	0.0%	0.0%	0.0%	0.0%	-
Air China	8	62.5%	0.0%	0	37.5%	0.0%	0.0%	0.0%	0.0%	0.0%	0.0%	0.0%	0.0%	0.0%	0.0%	-
Air France	54	100.0%	0.0%	0	0.0%	0.0%	0.0%	0.0%	0.0%	0.0%	0.0%	0.0%	0.0%	0.0%	0.0%	-
Air Malta	2	100.0%	0.0%	0.0%	0.0%	0.0%	0.0%	0.0%	0.0%	0.0%	0.0%	0.0%	0.0%	0.0%	0.0%	-
Air Nostrum	-	-	-	-	-	-	-	-	-	-	-	-	-	-	-	-
Air Serbia	-	-	-	-	-	-	-	-	-	-	-	-	-	-	-	-
AirBaltic	14	100.0%	0.0%	0.0%	0.0%	0.0%	0.0%	0.0%	0.0%	0.0%	0.0%	0.0%	0.0%	0.0%	0.0%	-
Alitalia	14	100.0%	0.0%	0.0%	0.0%	0.0%	0.0%	0.0%	0.0%	0.0%	0.0%	0.0%	0.0%	0.0%	0.0%	-
Arkefly	4	75.0%	0.0%	0.0%	0.0%	0.0%	0.0%	25.0%	0.0%	0.0%	0.0%	0.0%	0.0%	0.0%	0.0%	-
Austrian Airlines	42	100.0%	0.0%	0.0%	0.0%	0.0%	0.0%	0.0%	0.0%	0.0%	0.0%	0.0%	0.0%	0.0%	0.0%	-
Belavia Belarusian Airlines	10	100.0%	0.0%	0.0%	0.0%	0.0%	0.0%	0.0%	0.0%	0.0%	0.0%	0.0%	0.0%	0.0%	0.0%	-
British Airways	28	100.0%	0.0%	0.0%	0.0%	0.0%	0.0%	0.0%	0.0%	0.0%	0.0%	0.0%	0.0%	0.0%	0.0%	-
Brussels Airlines	32	100.0%	0.0%	0.0%	0.0%	0.0%	0.0%	0.0%	0.0%	0.0%	0.0%	0.0%	0.0%	0.0%	0.0%	-
BUL AIR	6	33.3%	0.0%	0.0%	33.3%	0.0%	0.0%	0.0%	0.0%	0.0%	0.0%	0.0%	0.0%	0.0%	33.3%	-
Bulgaria Air	-	-	-	-	-	-	-	-	-	-	-	-	-	-	-	-
Bulgarian Air Charter	10	100.0%	0.0%	0.0%	0.0%	0.0%	0.0%	0.0%	0.0%	0.0%	0.0%	0.0%	0.0%	0.0%	0.0%	-
Corendon Airlines	10	40.0%	0.0%	0.0%	0.0%	20.0%	0.0%	20.0%	0.0%	0.0%	0.0%	0.0%	0.0%	0.0%	0.0%	-
CSA Czech Airlines	36	100.0%	0.0%	0.0%	0.0%	0.0%	0.0%	0.0%	0.0%	0.0%	0.0%	0.0%	0.0%	0.0%	0.0%	-
El Al Israel Airlines	18	77.8%	0.0%	0.0%	0.0%	0.0%	0.0%	0.0%	0.0%	11.1%	0.0%	11.1%	0.0%	0.0%	0.0%	-
ELLINAIR S.A.	6	66.7%	0.0%	0.0%	33.3%	0.0%	0.0%	0.0%	0.0%	0.0%	0.0%	0.0%	0.0%	0.0%	0.0%	-
Emirates	14	100.0%	0.0%	0.0%	0.0%	0.0%	0.0%	0.0%	0.0%	0.0%	0.0%	0.0%	0.0%	0.0%	0.0%	-
Enter Air	141	98.6%	0.0%	0.0%	0.0%	0.7%	0.0%	0.0%	0.0%	0.7%	0.0%	0.0%	0.0%	0.0%	0.0%	-
Europe Airpost	1	0.0%	0.0%	0.0%	0.0%	0.0%	100.0%	0.0%	0.0%	0.0%	0.0%	0.0%	0.0%	0.0%	0.0%	-
European Air Transport (DHL)	10	50.0%	0.0%	0.0%	0.0%	0.0%	0.0%	50.0%	0.0%	0.0%	0.0%	0.0%	0.0%	0.0%	0.0%	-
Eurowings	24	100.0%	0.0%	0.0%	0.0%	0.0%	0.0%	0.0%	0.0%	0.0%	0.0%	0.0%	0.0%	0.0%	0.0%	-
Federal Express	8	100.0%	0.0%	0.0%	0.0%	0.0%	0.0%	0.0%	0.0%	0.0%	0.0%	0.0%	0.0%	0.0%	0.0%	-
Finnair	28	100.0%	0.0%	0.0%	0.0%	0.0%	0.0%	0.0%	0.0%	0.0%	0.0%	0.0%	0.0%	0.0%	0.0%	-
FlyEgypt	-	-	-	-	-	-	-	-	-	-	-	-	-	-	-	-
Germanwings	-	-	-	-	-	-	-	-	-	-	-	-	-	-	-	-
R AIRLINES AND TOURISM LTD	10	20.0%	20.0%	20.0%	0.0%	0.0%	0.0%	0.0%	0.0%	0.0%	0.0%	20.0%	0.0%	0.0%	20.0%	-
KLM Royal Dutch Airlines	42	71.4%	0.0%	0.0%	28.6%	0.0%	0.0%	0.0%	0.0%	0.0%	0.0%	0.0%	0.0%	0.0%	0.0%	-
LOT Polish Airlines	2,013	91.0%	2.7%	2.5%	1.1%	0.9%	0.4%	0.1%	0.0%	0.2%	0.0%	0.3%	0.0%	0.2%	0.3%	-
Lufthansa	98	96.9%	2.0%	1.0%	0.0%	0.0%	0.0%	0.0%	0.0%	0.0%	0.0%	0.0%	0.0%	0.0%	0.0%	-
Norwegian	28	100.0%	0.0%	0.0%	0.0%	0.0%	0.0%	0.0%	0.0%	0.0%	0.0%	0.0%	0.0%	0.0%	0.0%	-
Nouvelair Tunisie	4	50.0%	0.0%	0.0%	0.0%	0.0%	0.0%	0.0%	0.0%	0.0%	0.0%	0.0%	0.0%	0.0%	50.0%	-
Pegasus Airlines	10	100.0%	0.0%	0.0%	0.0%	0.0%	0.0%	0.0%	0.0%	0.0%	0.0%	0.0%	0.0%	0.0%	0.0%	-
Qatar Airways	14	100.0%	0.0%	0.0%	0.0%	0.0%	0.0%	0.0%	0.0%	0.0%	0.0%	0.0%	0.0%	0.0%	0.0%	-
Ryanair	98	99.0%	0.0%	1.0%	0.0%	0.0%	0.0%	0.0%	0.0%	0.0%	0.0%	0.0%	0.0%	0.0%	0.0%	-
SAS Scandinavian	36	100.0%	0.0%	0.0%	0.0%	0.0%	0.0%	0.0%	0.0%	0.0%	0.0%	0.0%	0.0%	0.0%	0.0%	-
Small Planet Airlines Poland	140	85.0%	0.7%	4.3%	1.4%	0.7%	0.7%	1.4%	0.7%	0.7%	0.0%	0.0%	0.0%	0.7%	2.9%	-
SprintAir	10	100.0%	0.0%	0.0%	0.0%	0.0%	0.0%	0.0%	0.0%	0.0%	0.0%	0.0%	0.0%	0.0%	0.0%	-
SprintAir Cargo	10	100.0%	0.0%	0.0%	0.0%	0.0%	0.0%	0.0%	0.0%	0.0%	0.0%	0.0%	0.0%	0.0%	0.0%	-
Star Air	-	-	-	-	-	-	-	-	-	-	-	-	-	-	-	-
SunExpress	4	100.0%	0.0%	0.0%	0.0%	0.0%	0.0%	0.0%	0.0%	0.0%	0.0%	0.0%	0.0%	0.0%	0.0%	-
Swiss International	38	84.2%	10.5%	5.3%	0.0%	0.0%	0.0%	0.0%	0.0%	0.0%	0.0%	0.0%	0.0%	0.0%	0.0%	-
Tailwind Airlines	2	100.0%	0.0%	0.0%	0.0%	0.0%	0.0%	0.0%	0.0%	0.0%	0.0%	0.0%	0.0%	0.0%	0.0%	-
TAP Portugal	18	100.0%	0.0%	0.0%	0.0%	0.0%	0.0%	0.0%	0.0%	0.0%	0.0%	0.0%	0.0%	0.0%	0.0%	-
TNT Airways	10	50.0%	50.0%	0.0%	0.0%	0.0%	0.0%	0.0%	0.0%	0.0%	0.0%	0.0%	0.0%	0.0%	0.0%	-
Travel Service	8	87.5%	0.0%	0.0%	0.0%	12.5%	0.0%	0.0%	0.0%	0.0%	0.0%	0.0%	0.0%	0.0%	0.0%	-
Travel Service Polska	102	58.8%	9.8%	2.9%	6.9%	2.0%	0.0%	10.8%	2.0%	1.0%	1.0%	0.0%	0.0%	0.0%	4.9%	-
Tunisair	2	0.0%	100.0%	0.0%	0.0%	0.0%	0.0%	0.0%	0.0%	0.0%	0.0%	0.0%	0.0%	0.0%	0.0%	-
Turkish Airlines	10	100.0%	0.0%	0.0%	0.0%	0.0%	0.0%	0.0%	0.0%	0.0%	0.0%	0.0%	0.0%	0.0%	0.0%	-
Ukraine International	32	100.0%	0.0%	0.0%	0.0%	0.0%	0.0%	0.0%	0.0%	0.0%	0.0%	0.0%	0.0%	0.0%	0.0%	-
UPS Airlines	18	100.0%	0.0%	0.0%	0.0%	0.0%	0.0%	0.0%	0.0%	0.0%	0.0%	0.0%	0.0%	0.0%	0.0%	-
VOYAGE AIR LTD	-	-	-	-	-	-	-	-	-	-	-	-	-	-	-	-
Vueling	6	100.0%	0.0%	0.0%	0.0%	0.0%	0.0%	0.0%	0.0%	0.0%	0.0%	0.0%	0.0%	0.0%	0.0%	-
Wizz Air	303	93.1%	2.6%	1.3%	1.7%	0.3%	0.3%	0.0%	0.3%	0.0%	0.3%	0.0%	0.0%	0.0%	0.3%	-
WOW Air	4	100.0%	0.0%	0.0%	0.0%	0.0%	0.0%	0.0%	0.0%	0.0%	0.0%	0.0%	0.0%	0.0%	0.0%	-
TOTAL	3,735	90.0%	2.9%	2.1%	1.7%	0.7%	0.3%	0.6%	0.2%	0.3%	0.1%	0.3%	0.0%	0.1%	0.6%	-

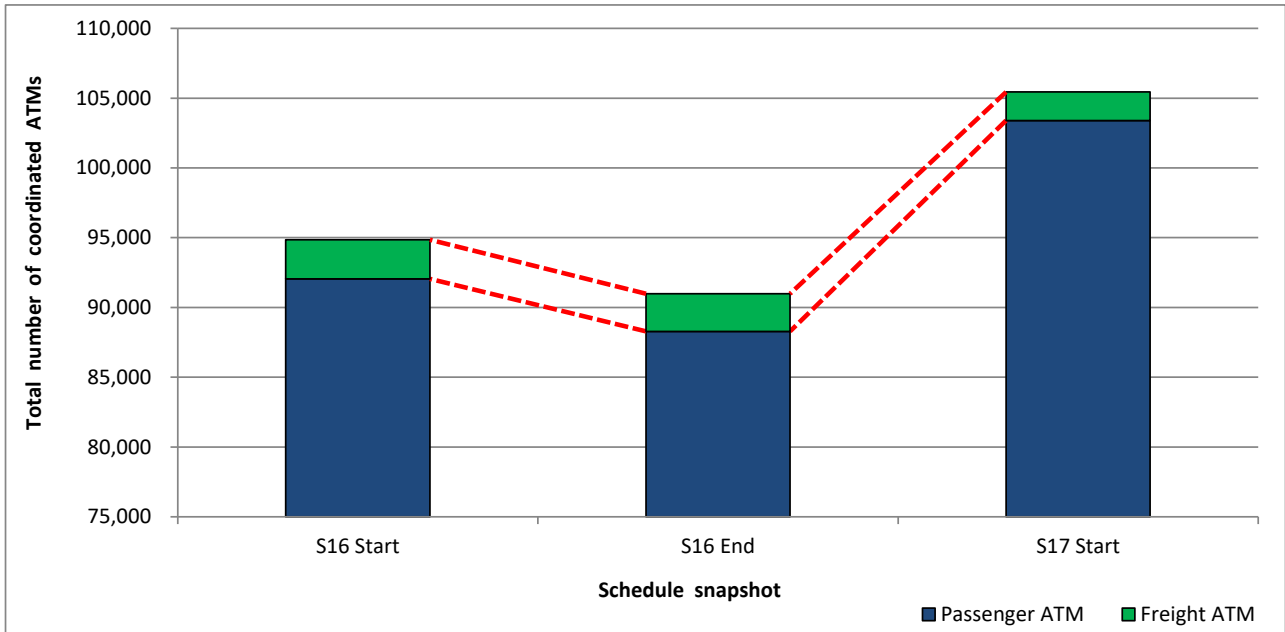
Operators with 0 "allocated ATMs" and 0 "Requests with NO slot allocated" in S17, are included in this list due to having slots allocated in either S16 Start or S16 End schedules.

Significant Route Changes

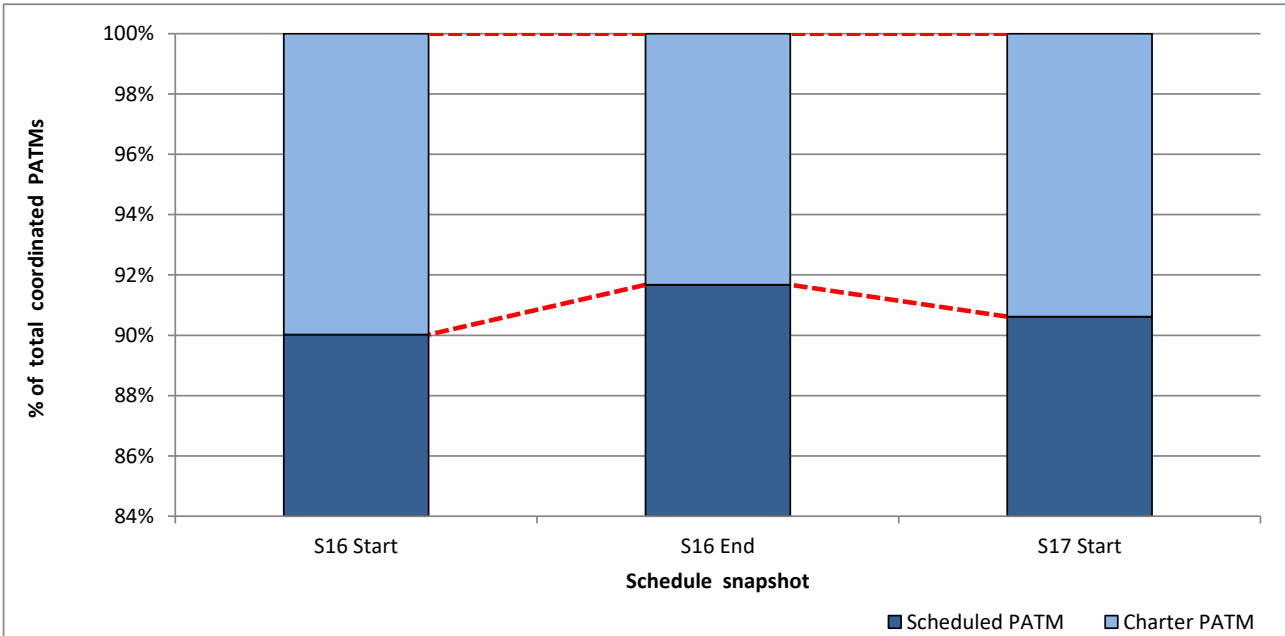


Operator	Category	Description of change from S16 schedule to S17 schedule
Air China	NEW	Service to Beijing
Air Baltic	Change	Increased service to Riga
Jat Airways	Cancelled	Service to Belgrade
LOT Polish Airlines	Change	Increased service to Cluj-Napoca, Seoul, Kosice, Krakow, Belgrade
Ukraine International Airlines	Change	Increased service to Kiev
Travel Service	Cancelled	Varna, Zakynthos, Split, Thessaloniki, Rijeka, Paphos, , Larnaca
Travel Service	Cancelled	Kalamata, Kos, Ibiza, Malaga, Cagliari Elmas, Bourgas, Kerkyra
Travel Service	Change	Reduced service to Lanzarote, Alicante, Funchal, Fuerteventura
Travel Service	Change	Reduced service to Las Palmas, Tenerife
SAS Scandinavian	Change	Reduced number of operations but increased seats to Copenhagen
Sprintair	Cancelled	Service to Zielona Gora, Kaunas, Riga
Sprintair	Change	Increased service to Kiev
Wizz Air	NEW	Service to Bilund, Bratislava, Kiev, Lyon, Nice, Santander, Split
Wizz Air	NEW	Service to Vilnius, Bucharest
Wizz Air	Cancelled	Service to Maastricht, Geneva, Dortmund,
Wizz Air	Change	Increased service to Bari, Keflavik, Malta, Porto
WOW Air	Change	Reduced service to Oslo, Luton, Rome, Glasgow, Brussels, Paris, Milan
Corendon	Change	Increased service to Antalya
Corendon	NEW	Service to Bodrum Milas
Travel Service Polska	NEW	Service to Lanzarote, Alicante, Barcelona, Funchal, Fuerteventura
Travel Service Polska	NEW	Service to Heraklion, Gerona, Hurghada, Kavala, Las Palmas
Travel Service Polska	NEW	Service to Ponta Delgada Nordela, Paphos, Palermo, Preveza
Travel Service Polska	NEW	Service to Ras Al Khaimas, Rimini, Santa Cruz De La Palma, Split
Travel Service Polska	NEW	Service to Tirana, Tenerife
Travel Service Polska	Cancelled	Service to Podgorica, Palma Mallorca,
Travel Service Polska	Changed	Reduced service to Agadir, Malaga, Antalya, Bodrum, Tel Aviv
Travel Service Polska	Changed	Increased service to Sharm El Sheikh, Rhodes, Palermo
Air Berlin	Change	increased service to Berlin
Air France	Change	Reduced number of operations but increased seats to Paris
Finnair	Change	Increased service to Helsinki
Norwegian Air Shuttle	Cancelled	Service to Stavanger
Norwegian	Cancelled	Service to Gatwick, Las Palmas
Norwegian	Change	Reduced service to Barcelona
Enterair	Cancelled	Service to Chania Souda, Dalaman, Patras Araxos, Mikonos, Skiathos
Enterair	Cancelled	Service to Lemnos, Paphos,
Enterair	Change	Reduced service to Antalya, Catania, Palma de Mallorca, Zakynthos
Enterair	NEW	Service to Olbia Costa Smeralda, Larnaca, Ibiza, Gerona, Bari
Enterair	NEW	Service to Split, Marsa Alam, Ras Al Khaimah, Reus, Naples
Ryanair	NEW	Service to Gdansk, Wroclaw, Szczecin
Adria Airways	Change	Increased service to Ljubljana
LOT Polish Airlines	Change	Increased service to Katowice, Chisinau, Kharkov, Dusseldirf
LOT Polish Airlines	NEW	Service to Tehran, Kiev Zhuliany, Zielona Gora, Newark
LOT Polish Airlines	NEW	Service to Kaliningrad, Kaunas, Los Angeles, Gothenburg
EL AL	Change	Increased service to Tel Aviv
LOT Polish Airlines	Cancelled	Beirut

Total ATMs: Passenger ATMs vs. Freight ATMs



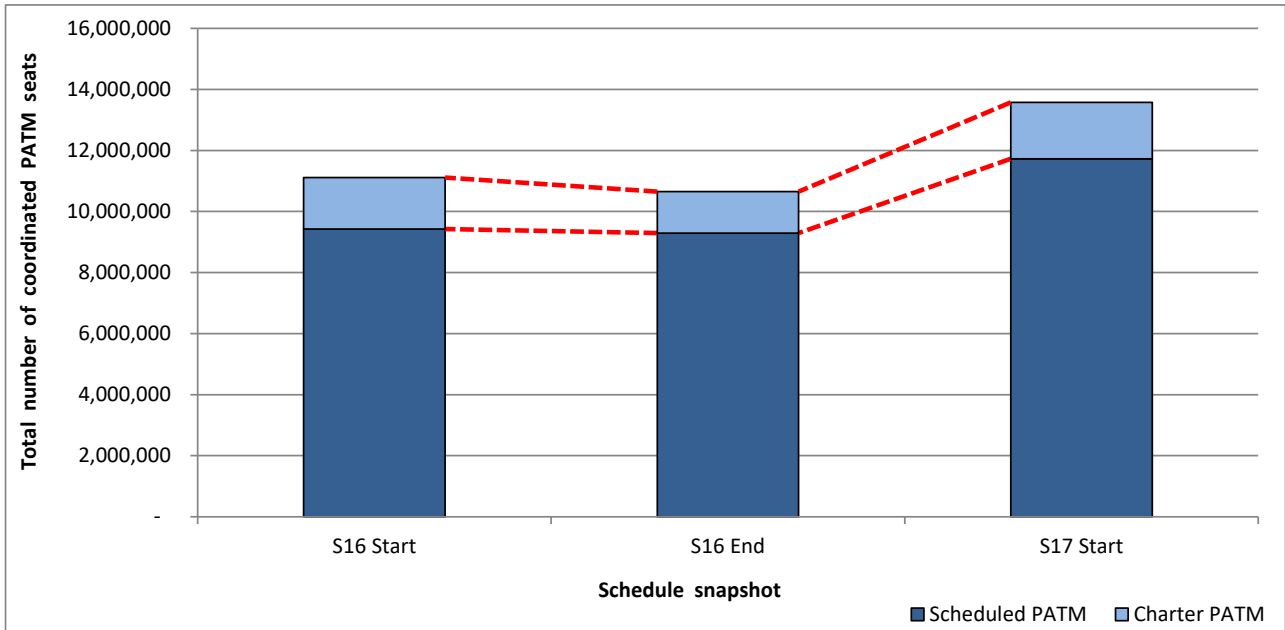
Passenger ATMs: Scheduled vs. Charter



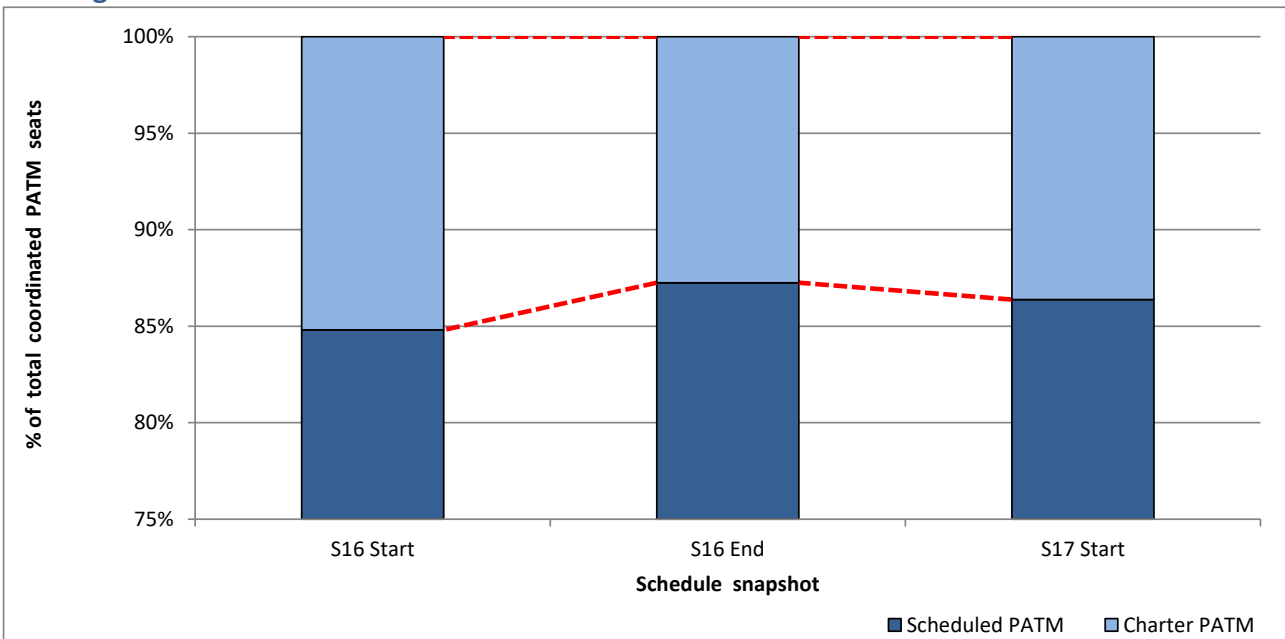
Full Season - PATM Seats Analysis



Total Passenger ATM seats: Scheduled vs. Charter



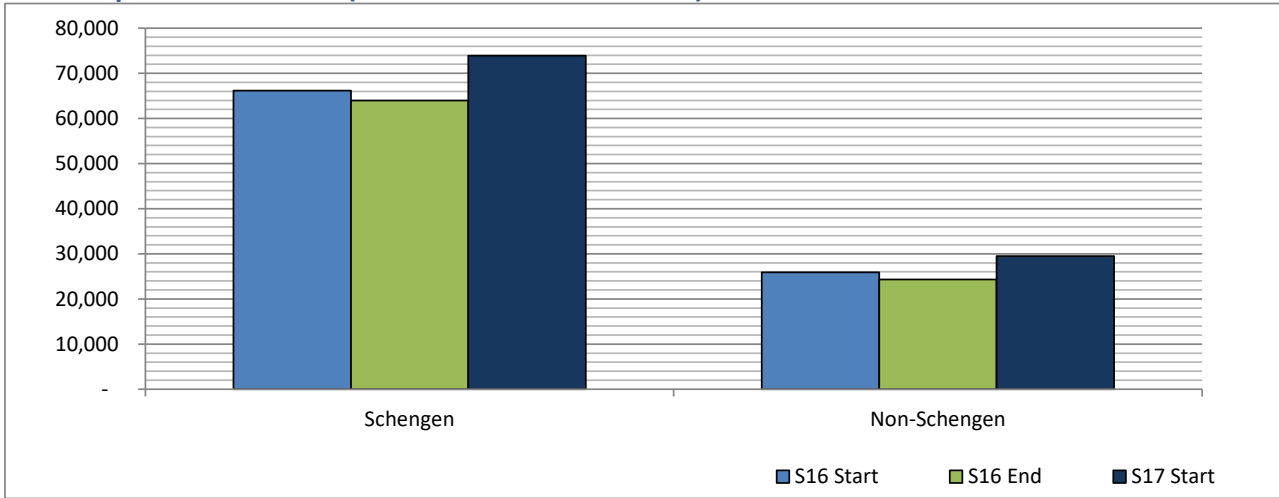
Passenger ATM seats: Scheduled vs. Charter



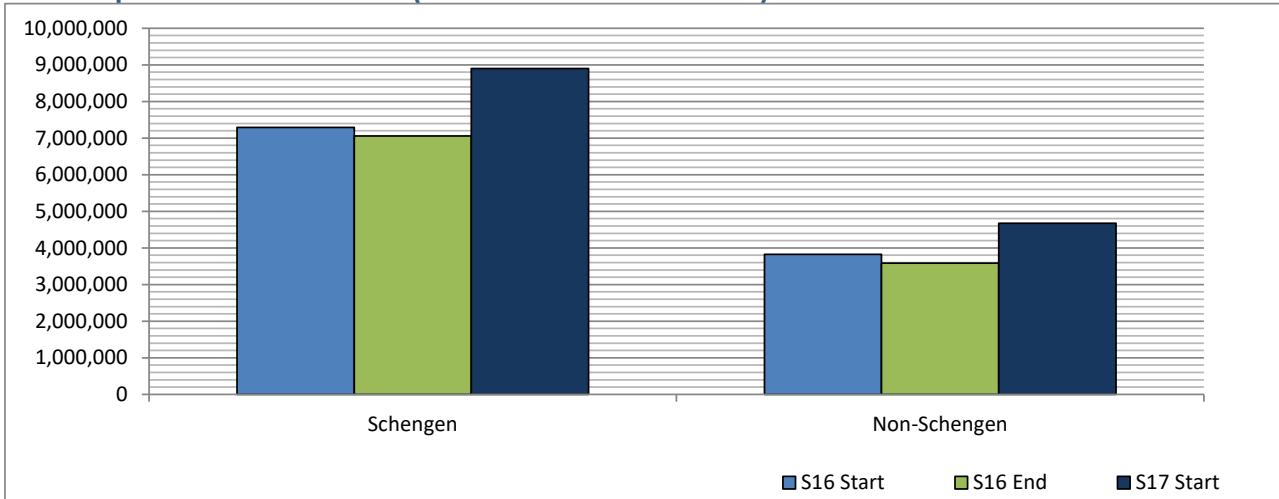
Full Season - Terminal Analysis



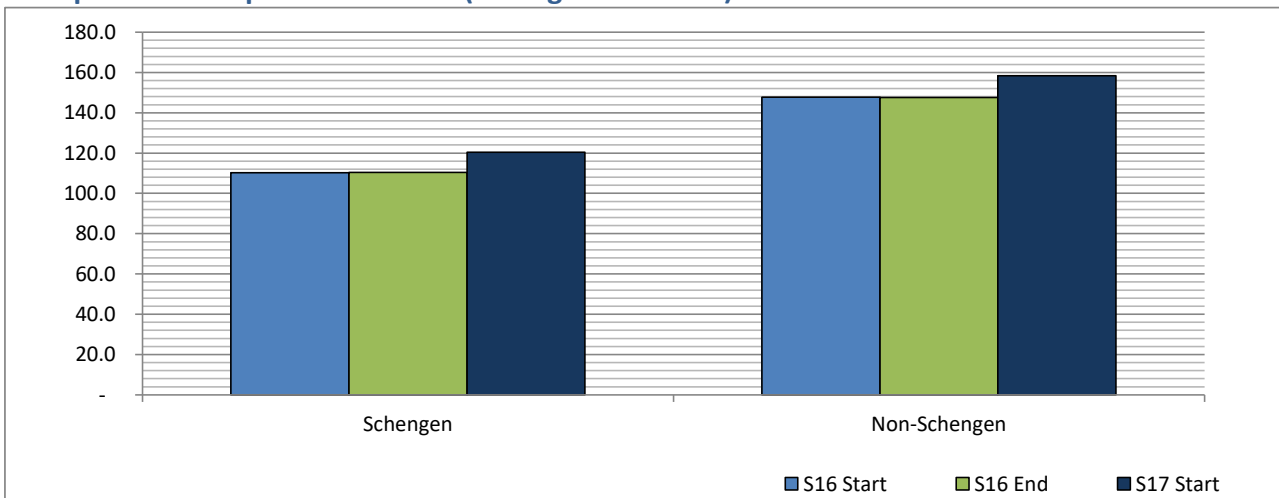
Air Transport Movements (total allocated for season)



Air Transport Movement Seats (total allocated for season)



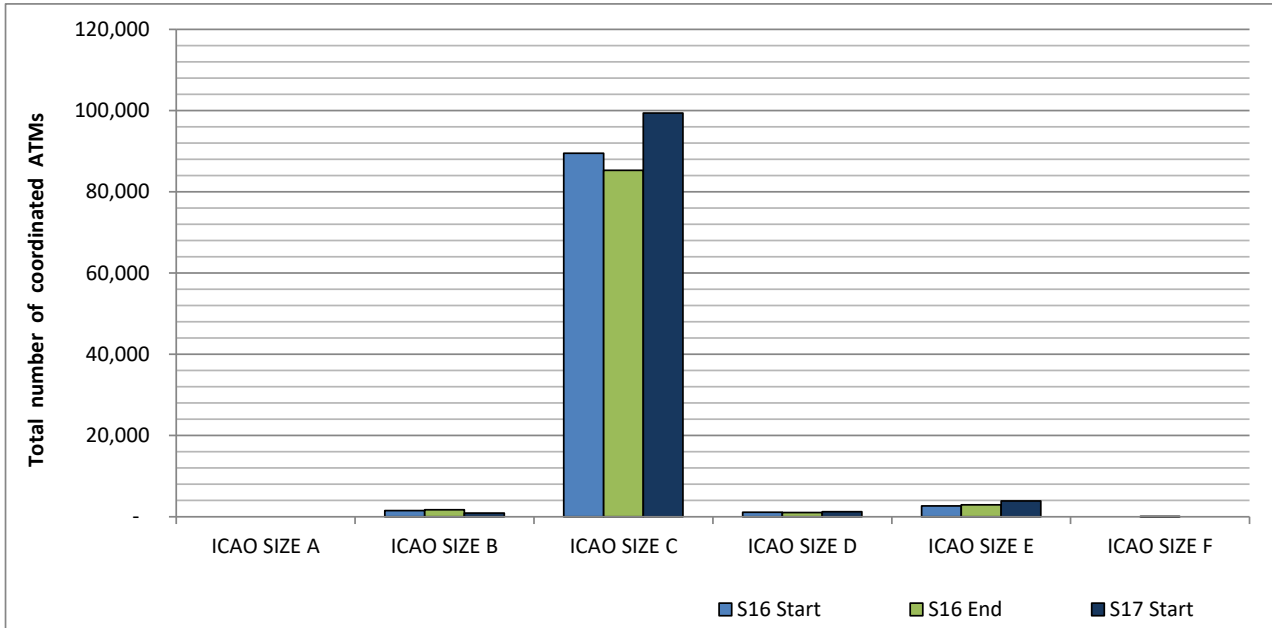
Seats per Air Transport Movement (average for season)



Full Season - Aircraft Size Analysis

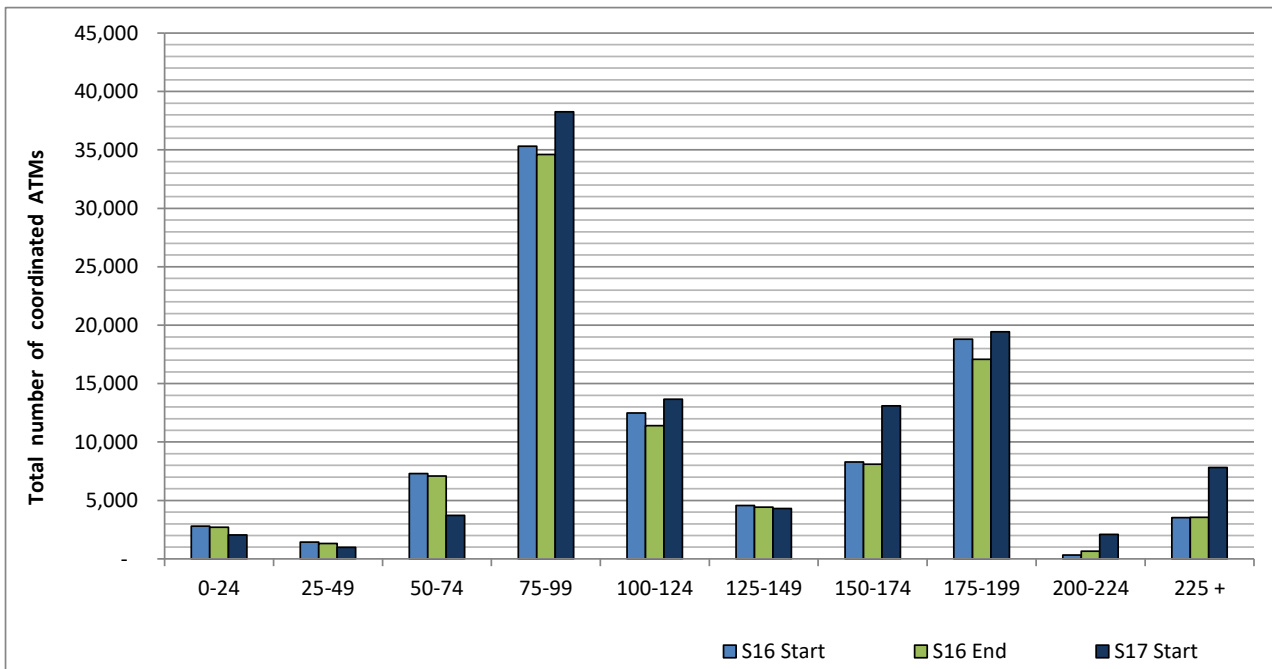


ICAO size designation



Note: See Glossary for definitions of ICAO SIZE groupings

Air Transport Movement seat distribution

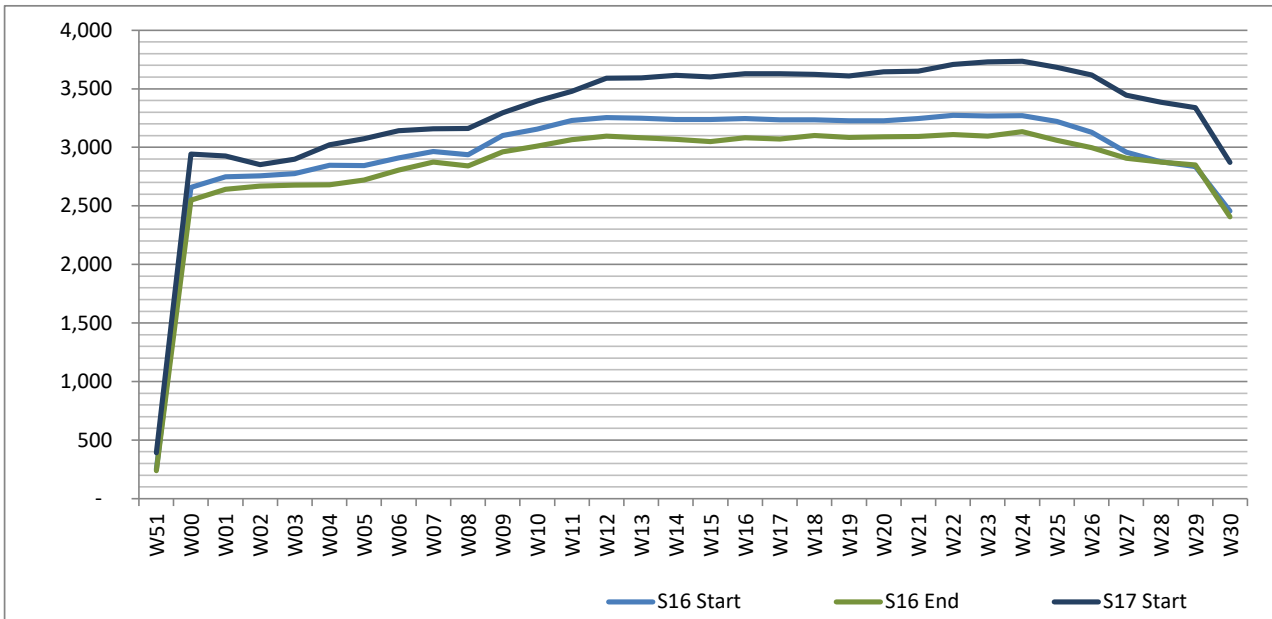


Note: FREIGHT-ONLY services with 0 seats are included in the first seat band '0-24'

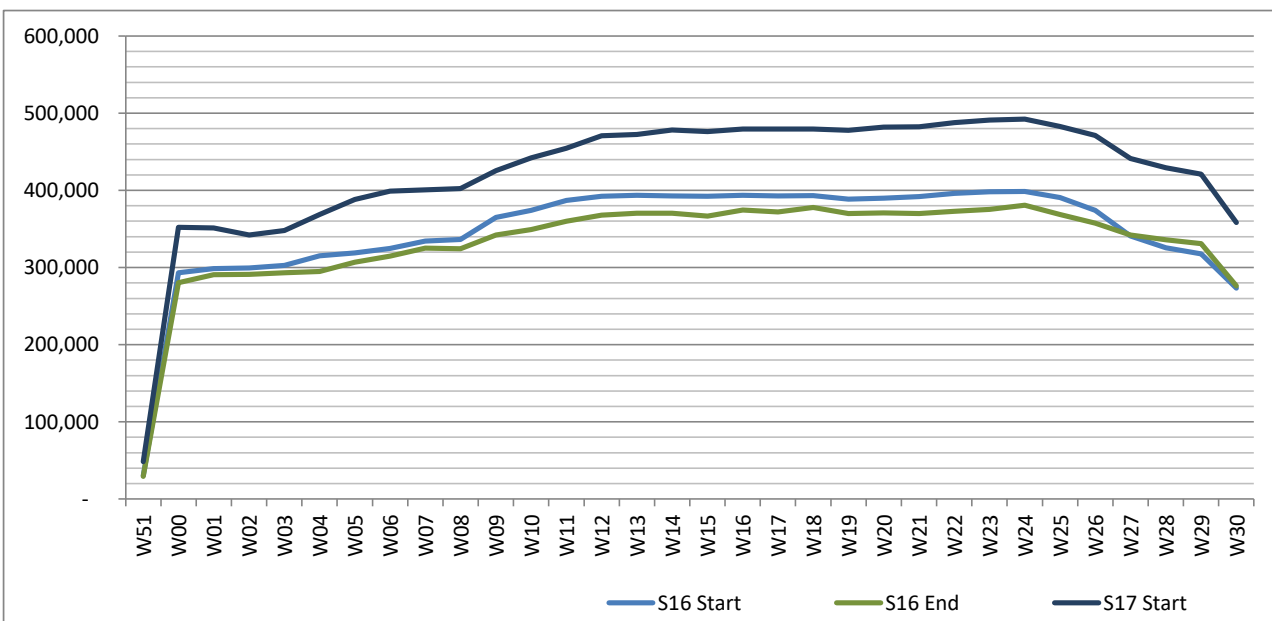
Full Season - Seasonality



Air Transport Movements by week of season



Air Transport Movement Seats by week of season



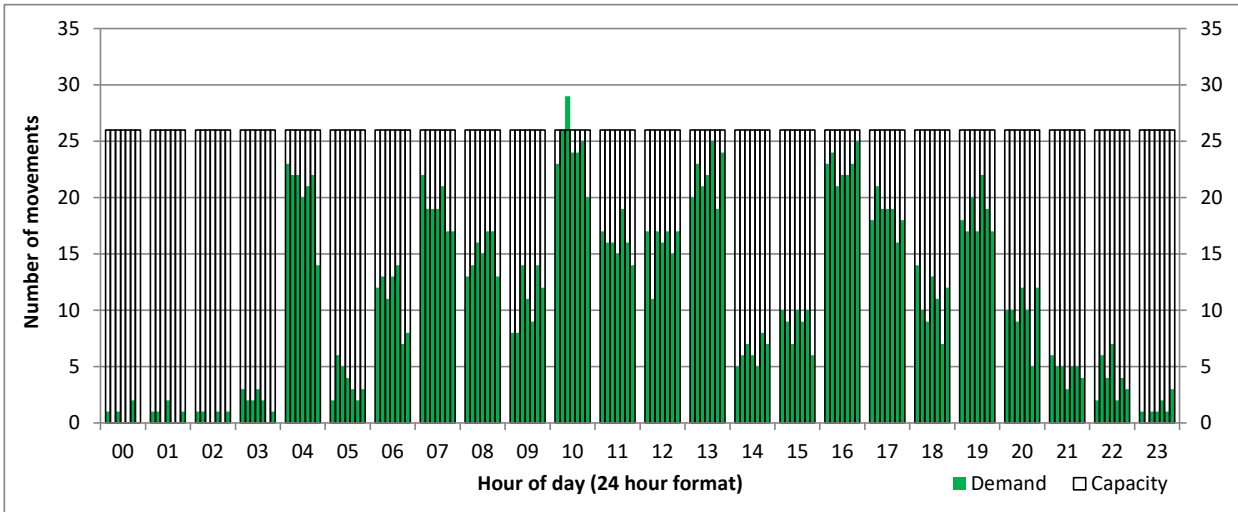
Peak Week - Hourly Runway Demand

Schedule: S17 Start



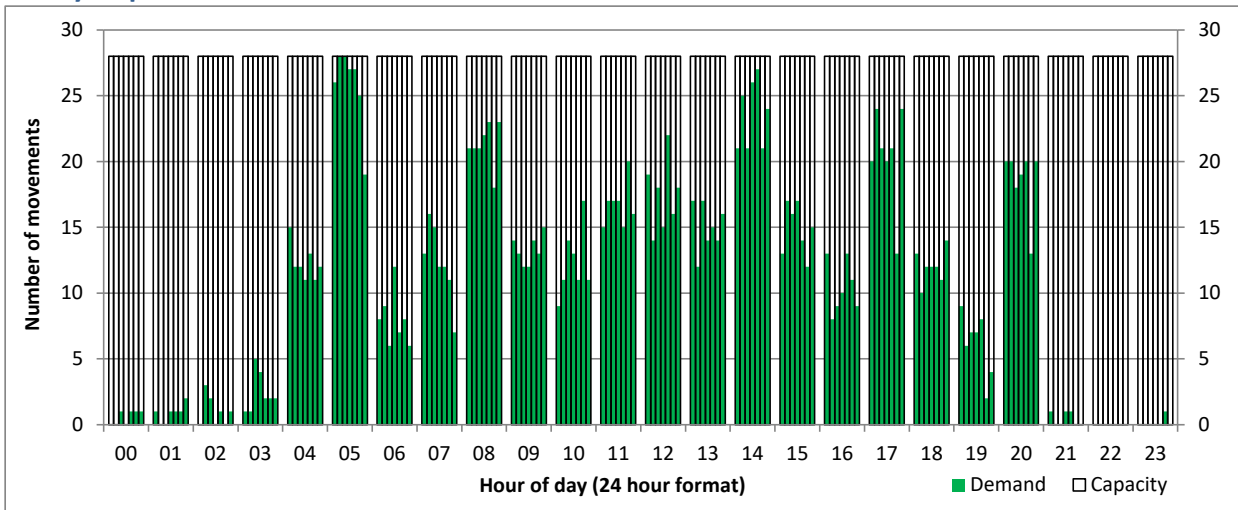
Hourly Arrival Demand

Time: UTC



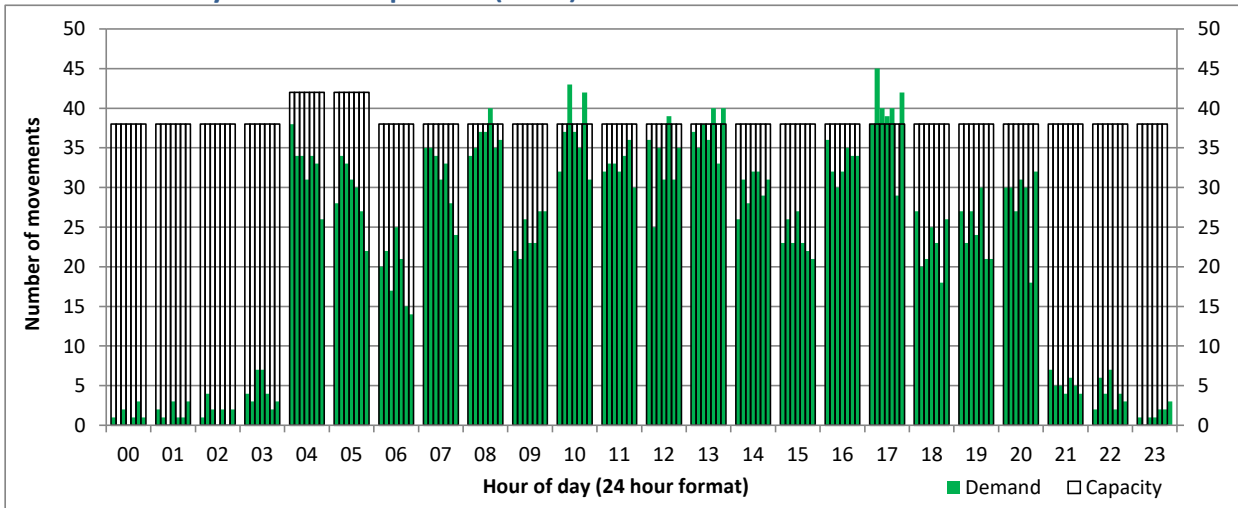
Hourly Departure Demand

Time: UTC



Combined Hourly Arrival & Departure (Total) Demand

Time: UTC



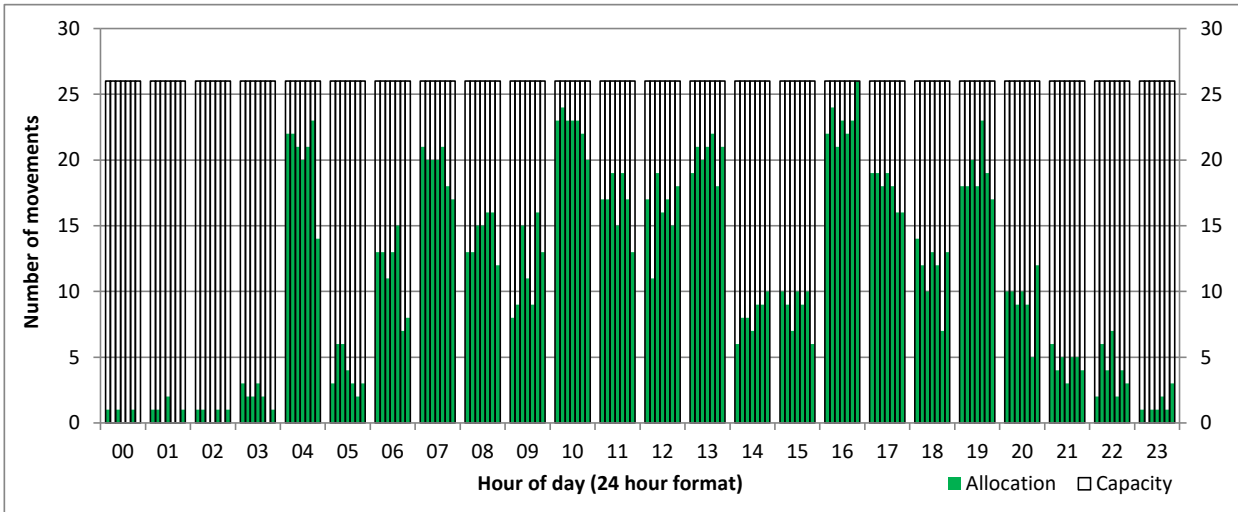
Peak Week - Hourly Runway Allocation

Schedule: S17 Start



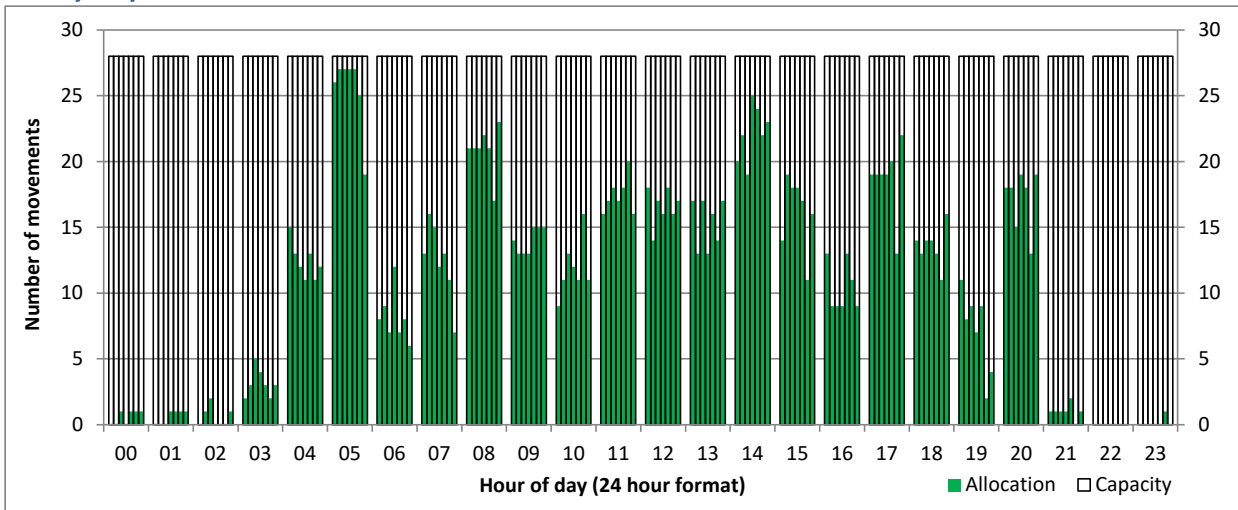
Hourly Arrival Allocation

Time: UTC



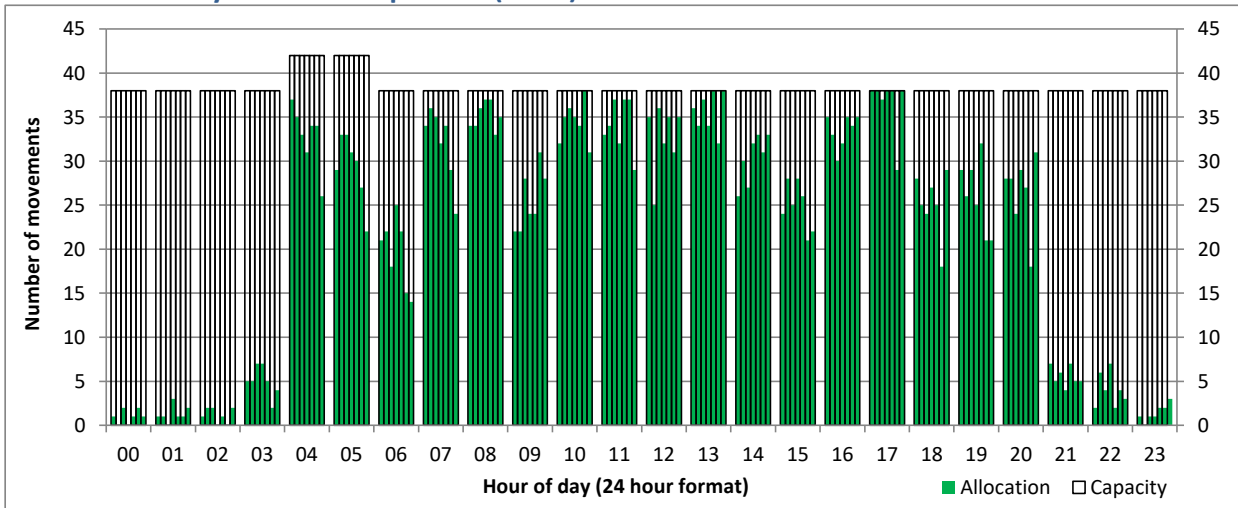
Hourly Departure Allocation

Time: UTC



Combined Hourly Arrival & Departure (Total) Allocation

Time: UTC



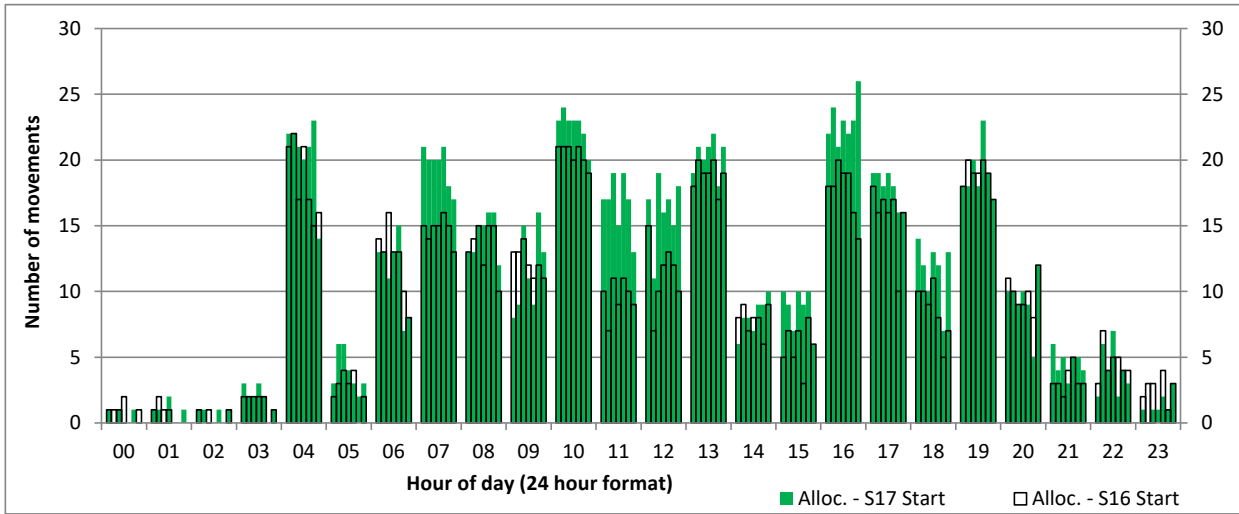
Peak Week - Runway Allocation Comparison

Comparison of S17 Start vs. S16 Start



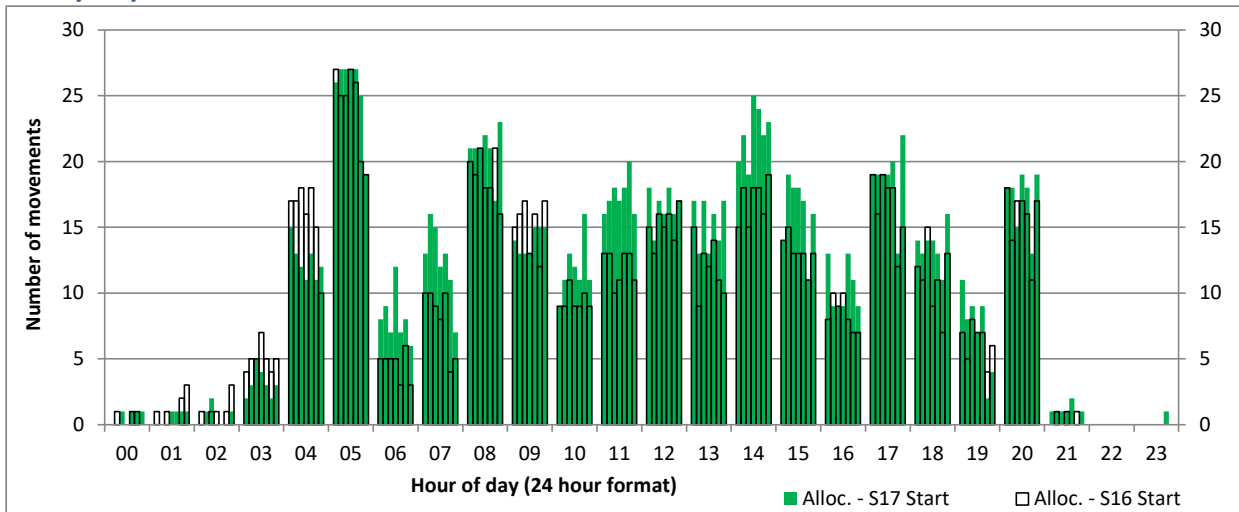
Hourly Arrival Allocation

Time: UTC



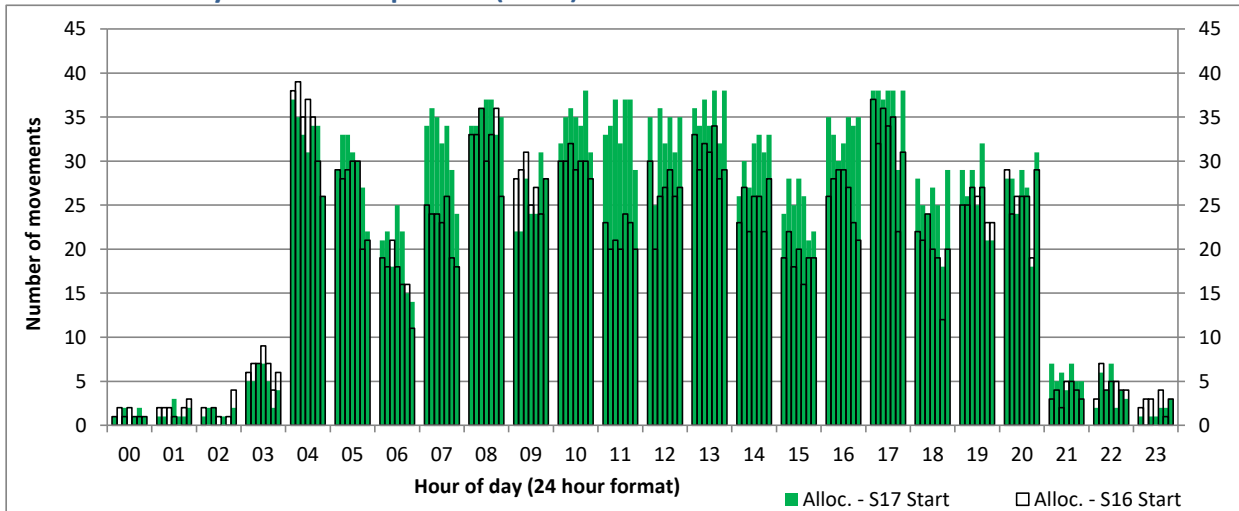
Hourly Departure Allocation

Time: UTC



Combined Hourly Arrival & Departure (Total) Allocation

Time: UTC



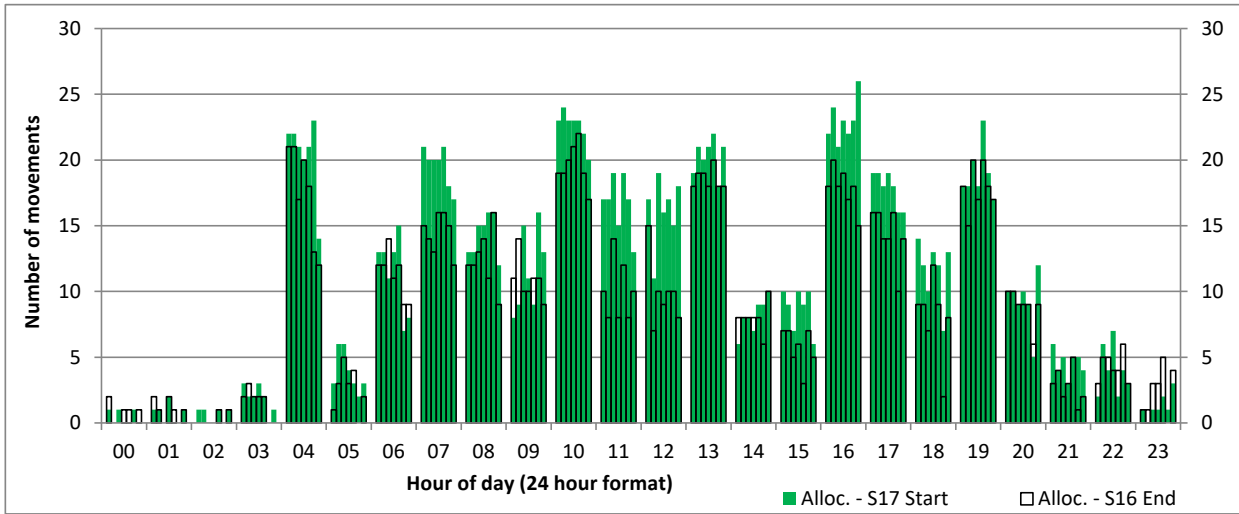
Peak Week - Runway Allocation Comparison

Comparison of S17 Start vs. S16 End



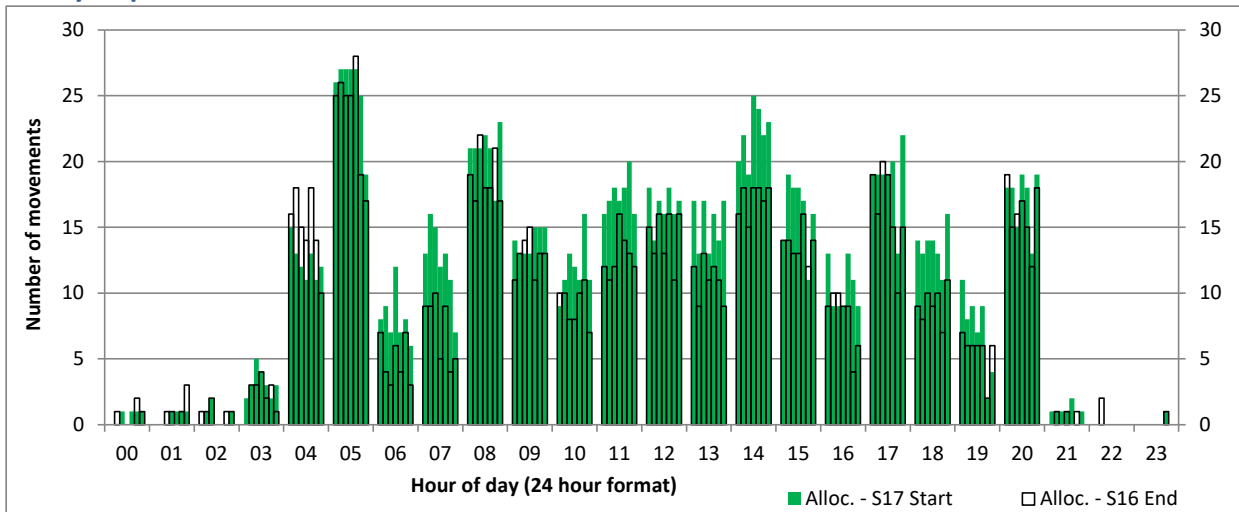
Hourly Arrival Allocation

Time: UTC



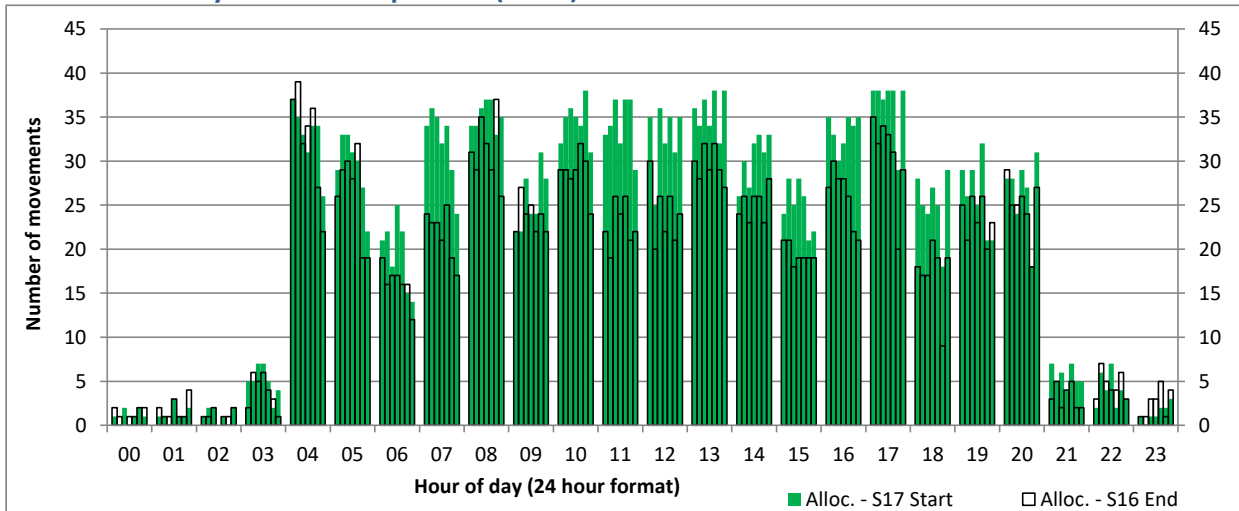
Hourly Departure Allocation

Time: UTC



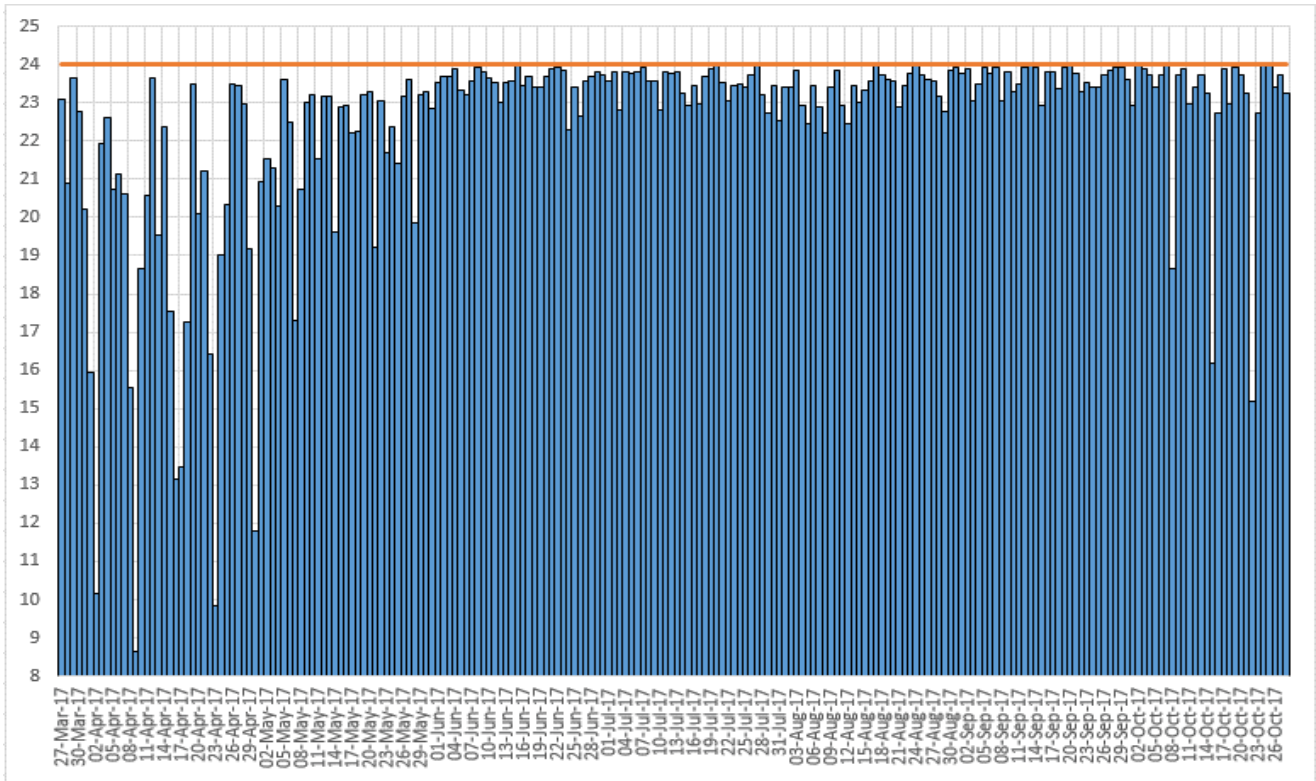
Combined Hourly Arrival & Departure (Total) Allocation

Time: UTC



Full Season - Coordinated Night Movements

Limit 24 points



Peak Week - Movements Histogram

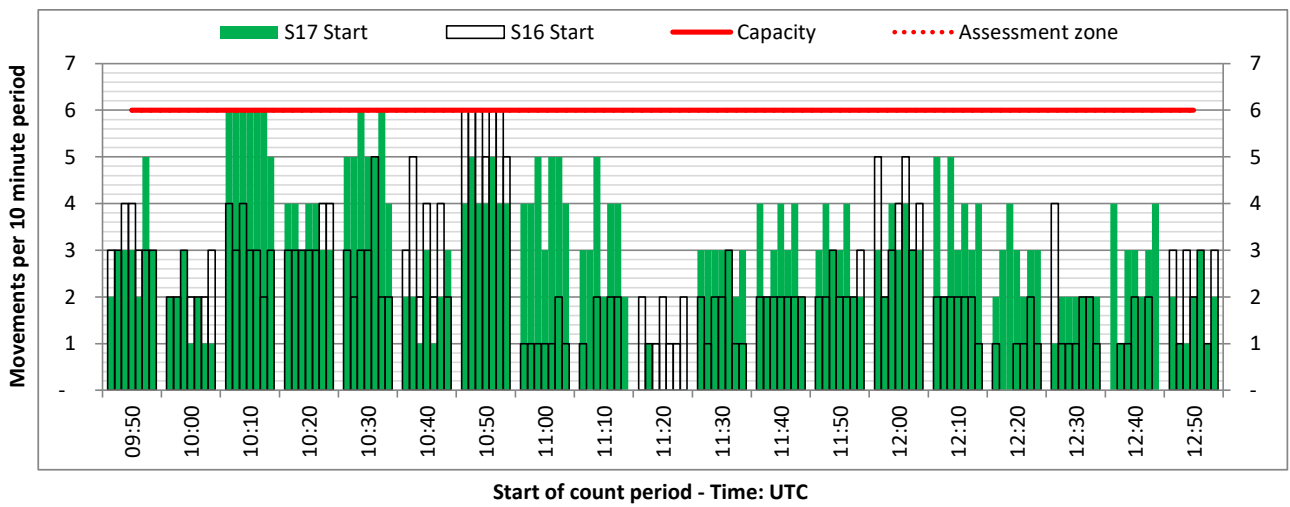
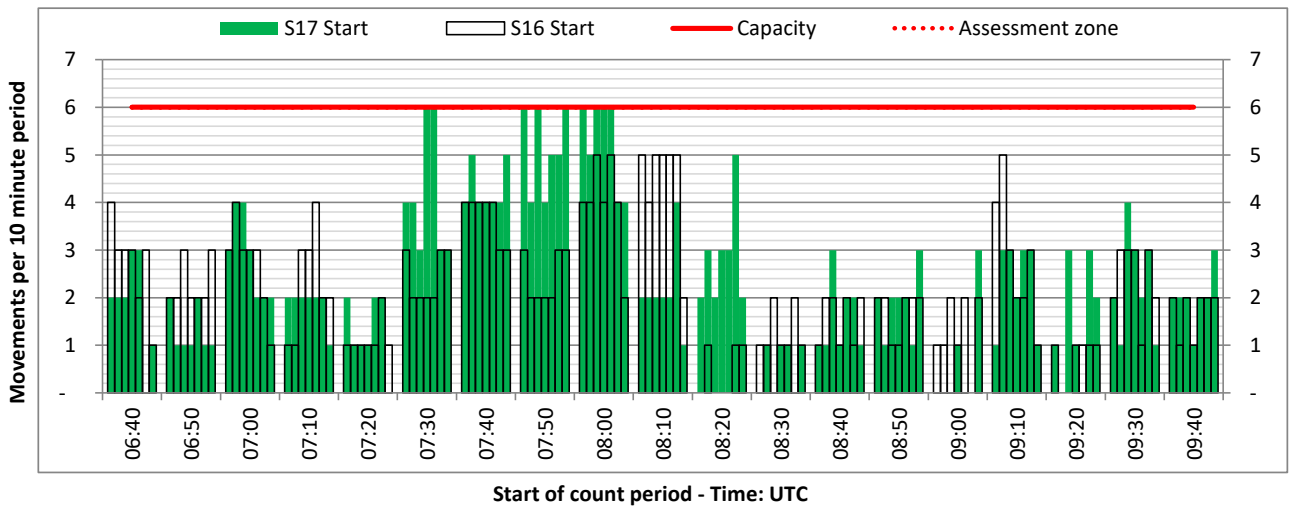
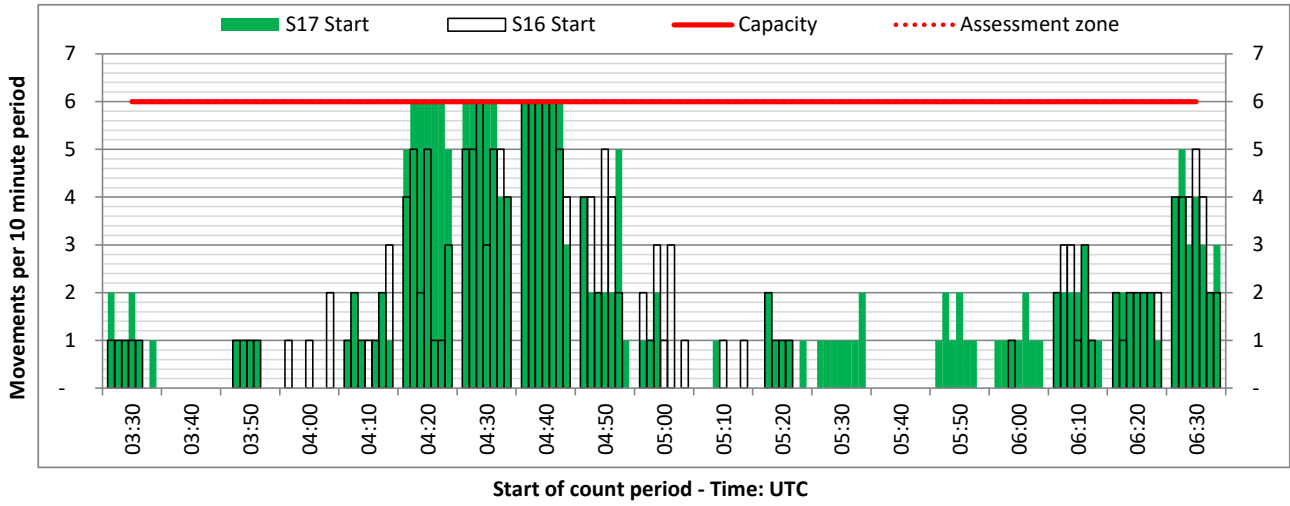
ARRIVAL - 10 minute count rolling every 10 mins (R10)



Terminals: All Terminals

Operators: All Operators

Days: 1234567



Peak Week - Movements Histogram

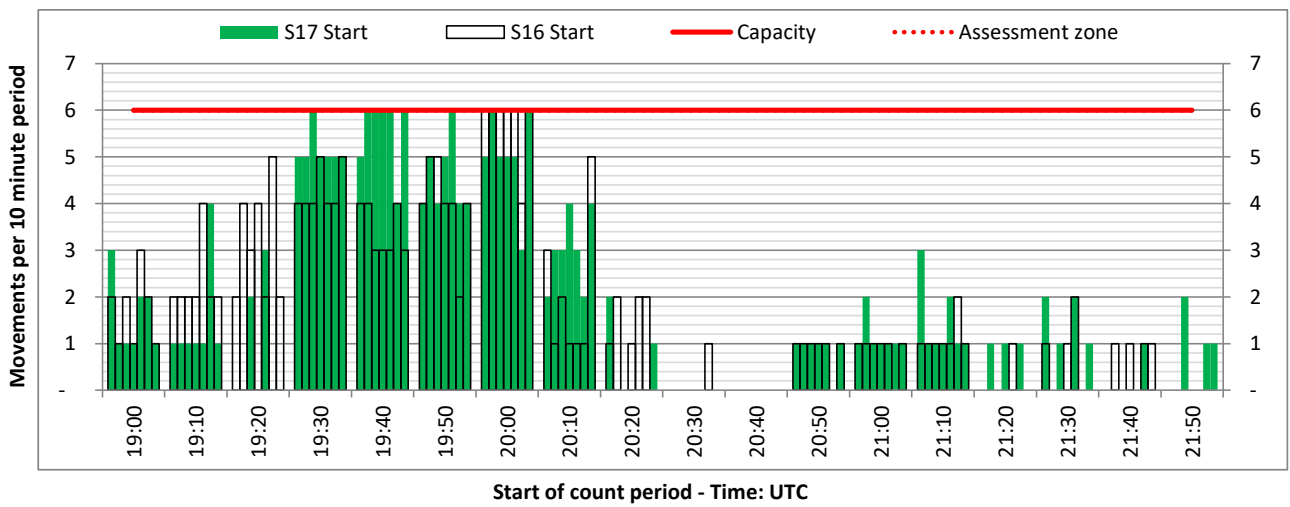
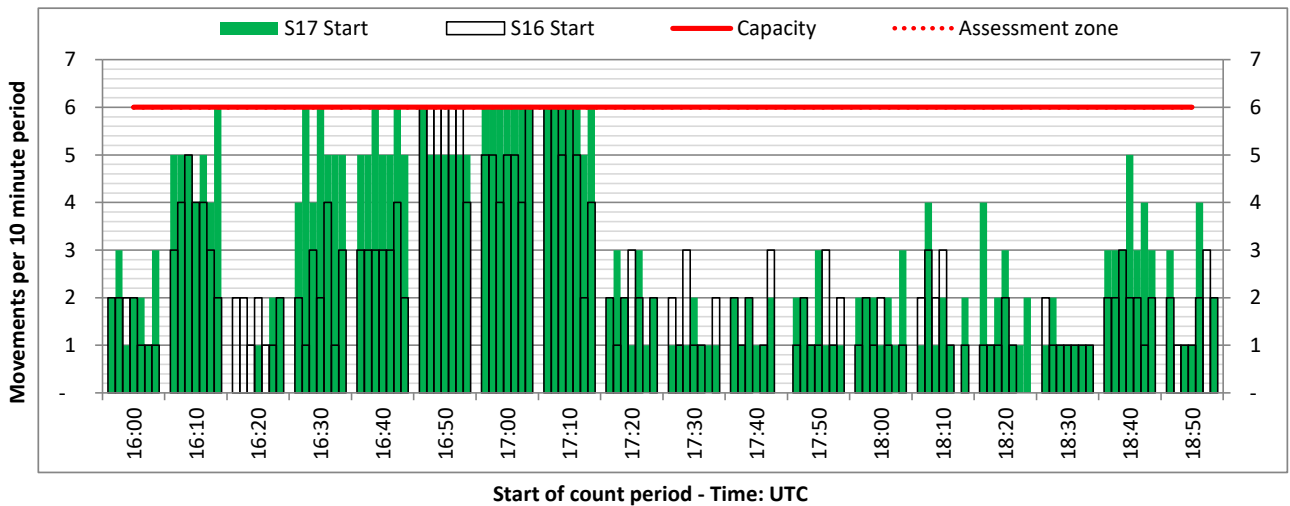
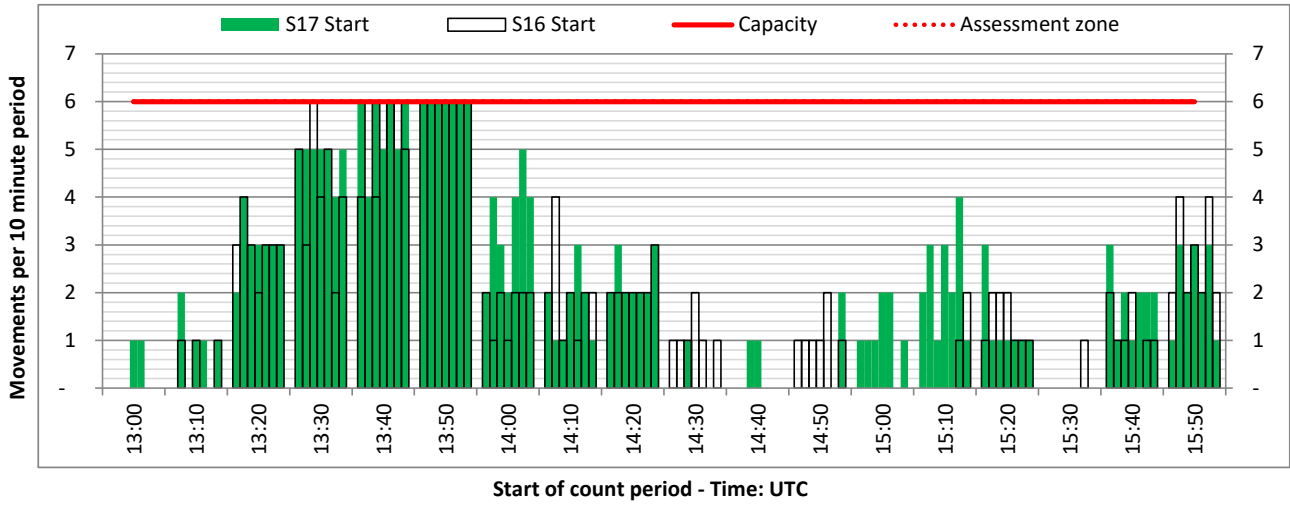
ARRIVAL - 10 minute count rolling every 10 mins (R10)



Terminals: All Terminals

Operators: All Operators

Days: 1234567



Peak Week - Movements Histogram

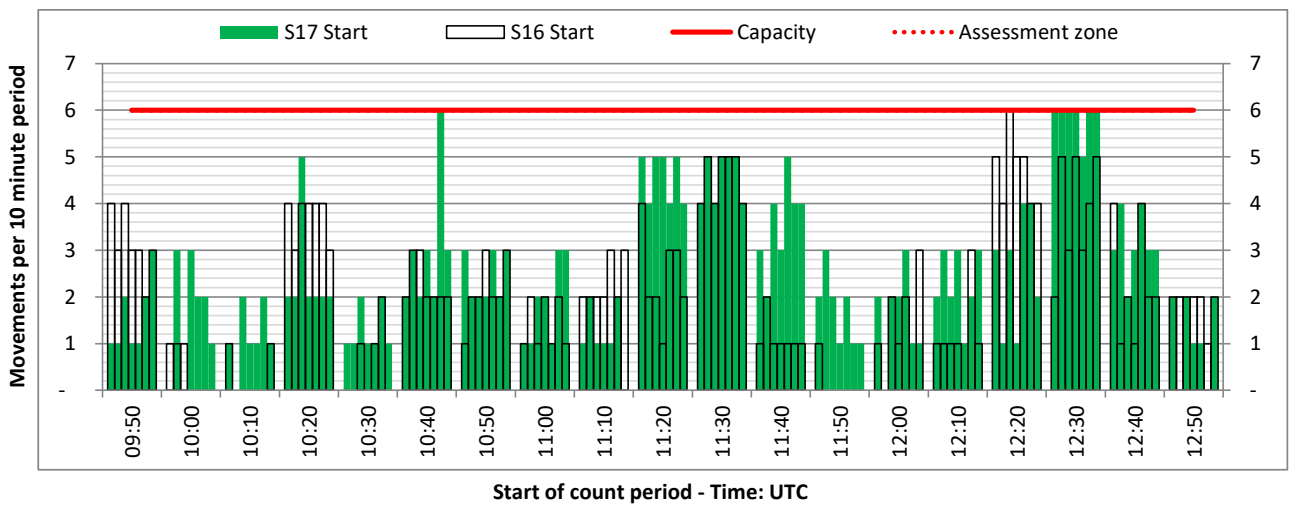
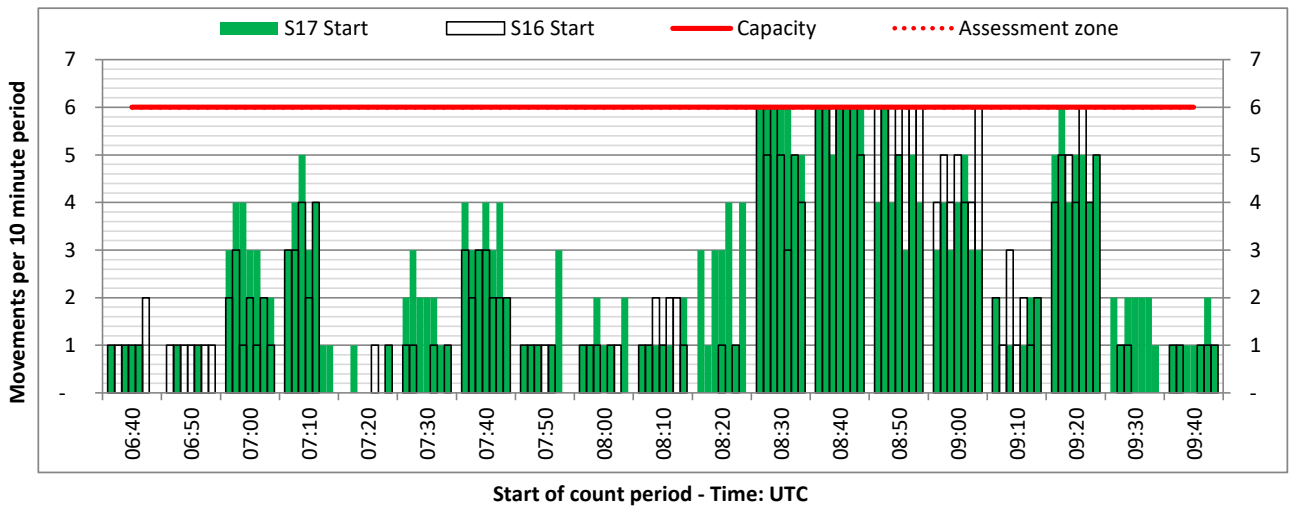
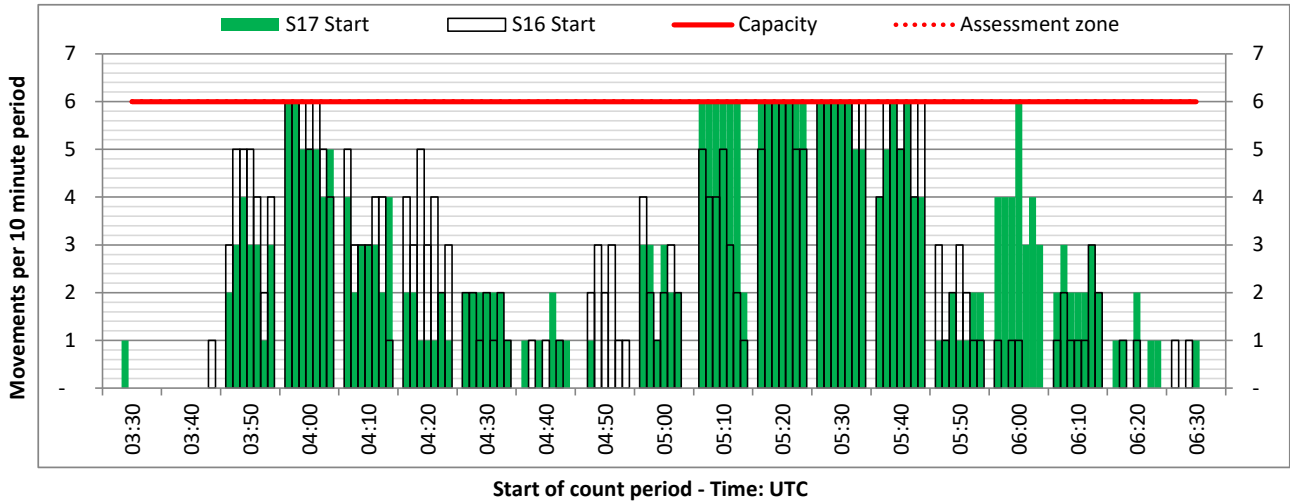
DEPARTURE - 10 minute count rolling every 10 mins (R10)



Terminals: All Terminals

Operators: All Operators

Days: 1234567



Peak Week - Movements Histogram

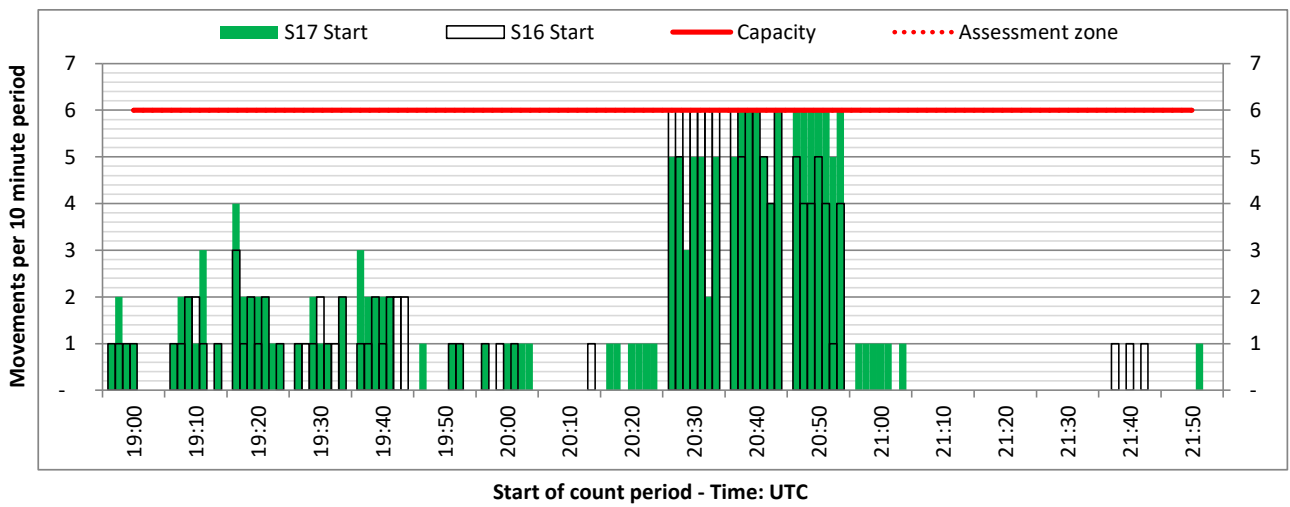
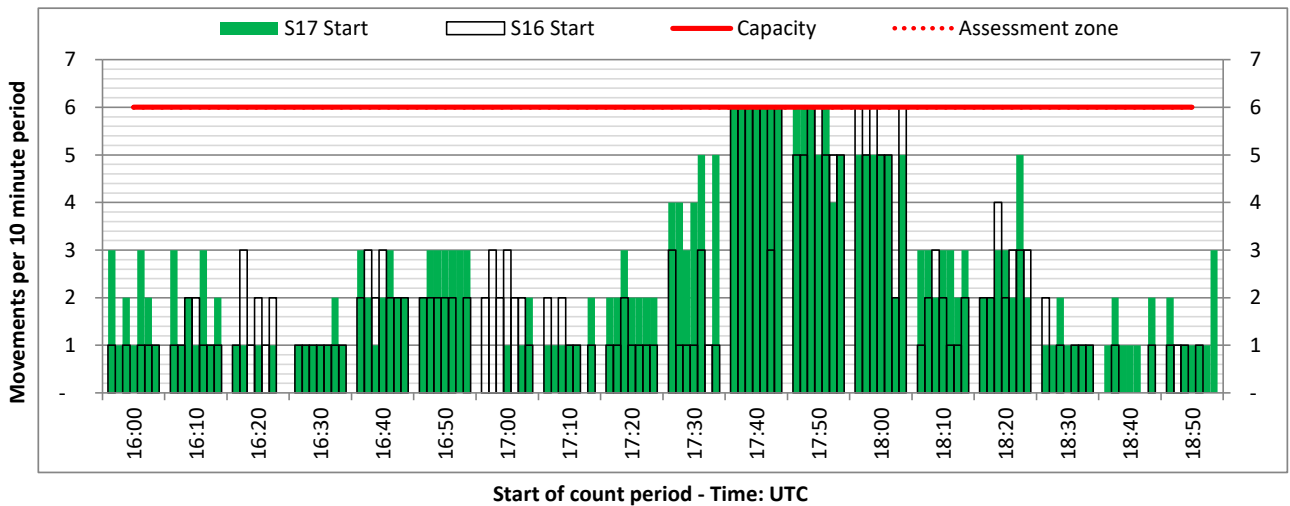
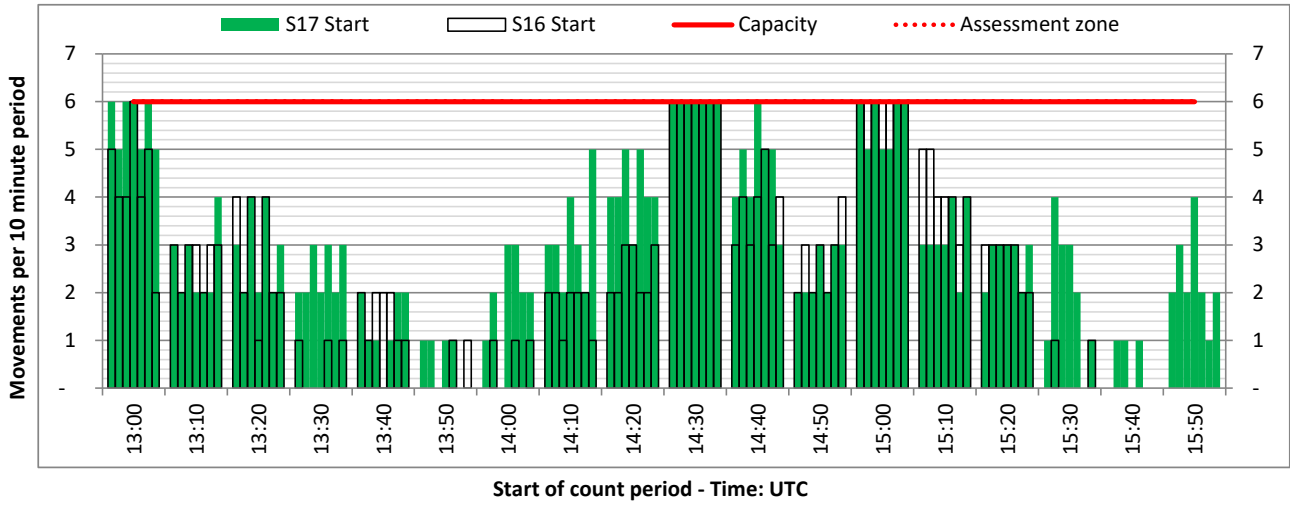
DEPARTURE - 10 minute count rolling every 10 mins (R10)



Terminals: All Terminals

Operators: All Operators

Days: 1234567



Peak Week - Movements Histogram

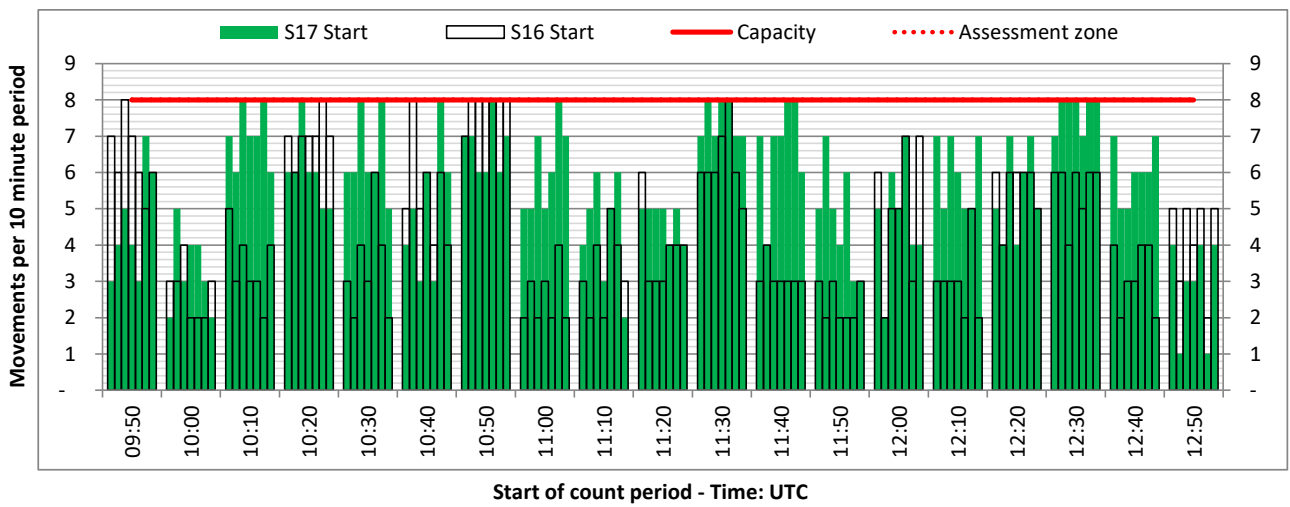
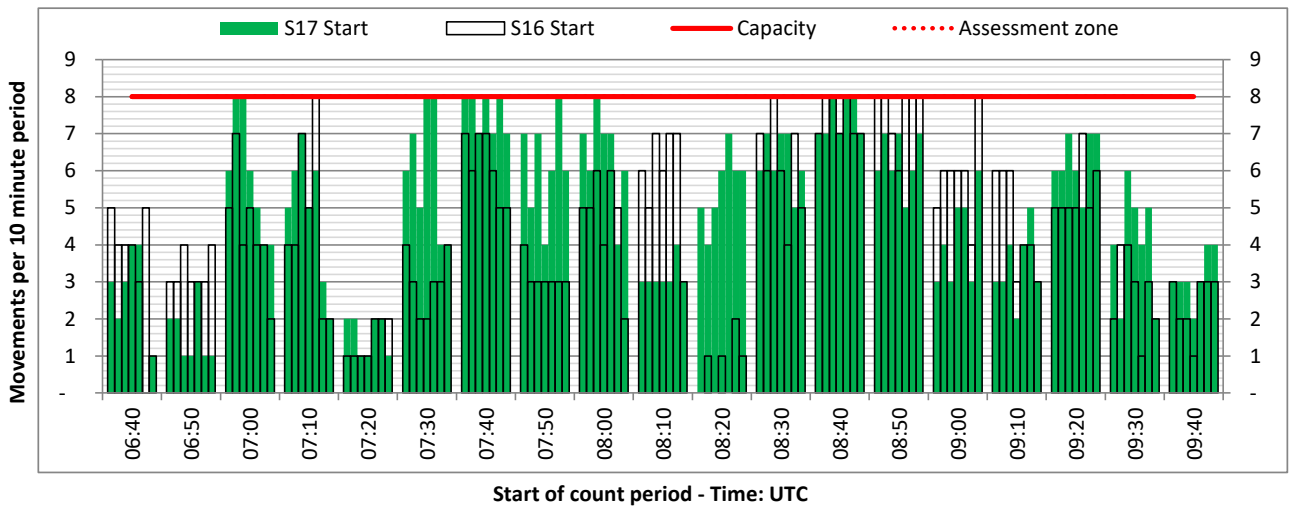
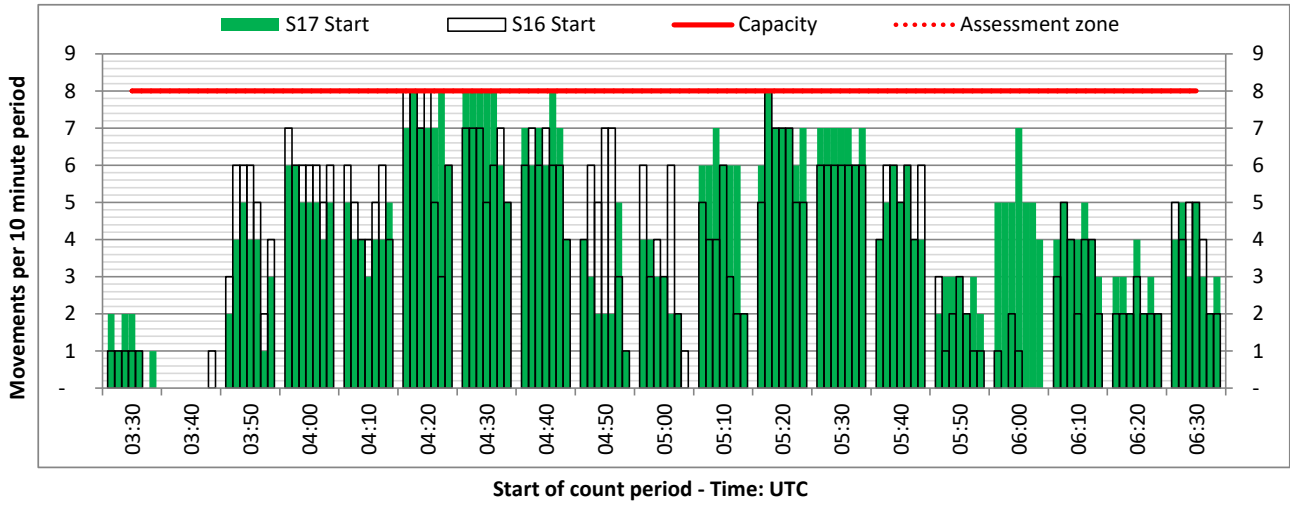
TOTAL - 10 minute count rolling every 10 mins (R10)



Terminals: All Terminals

Operators: All Operators

Days: 1234567



Peak Week - Movements Histogram

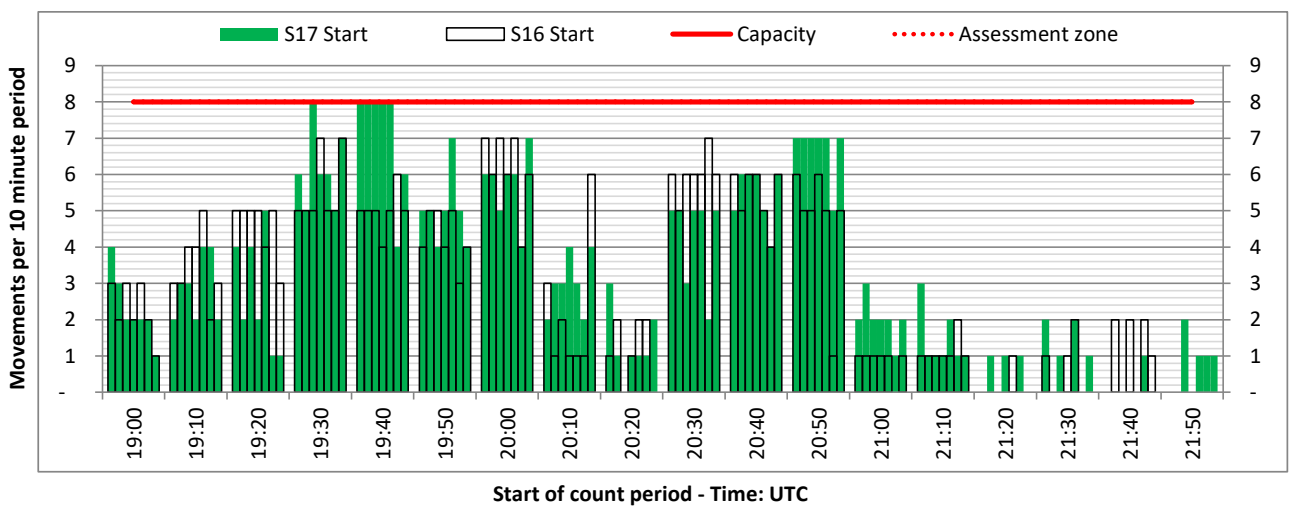
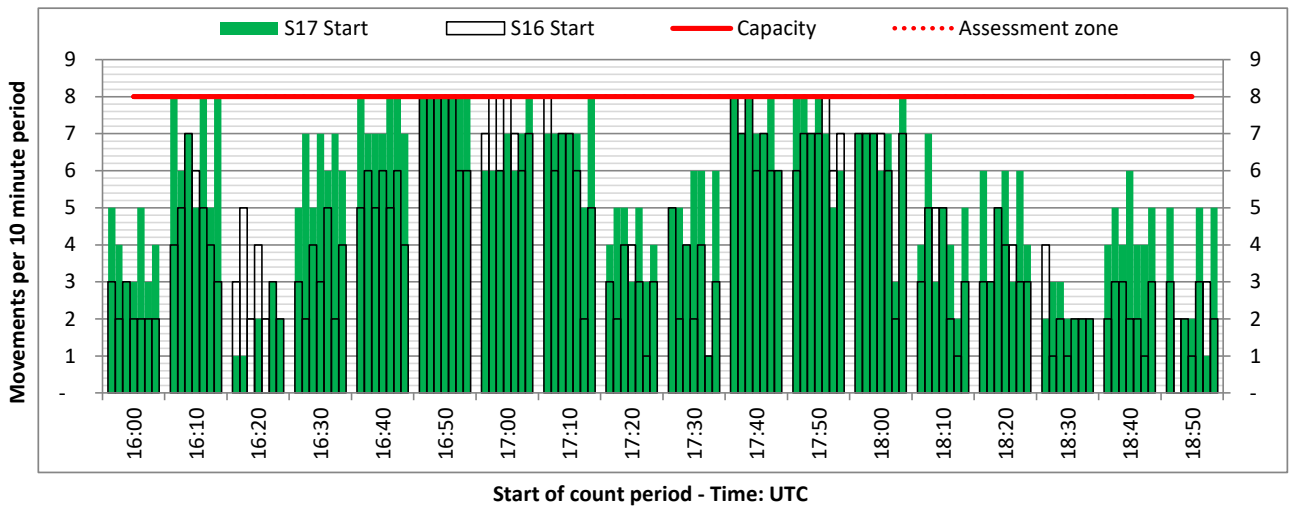
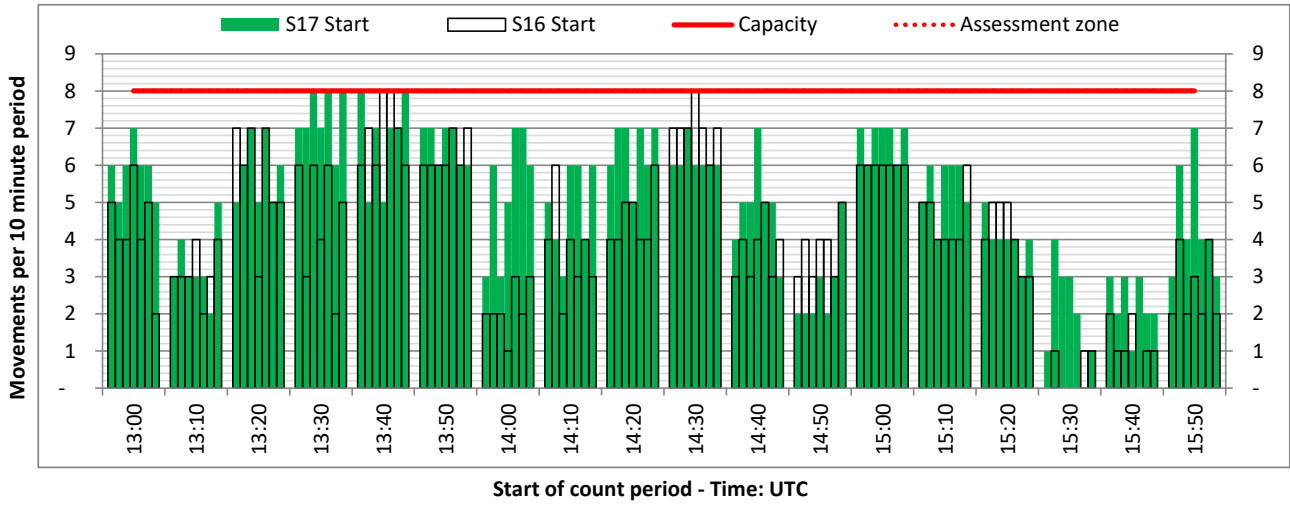
TOTAL - 10 minute count rolling every 10 mins (R10)



Terminals: All Terminals

Operators: All Operators

Days: 1234567



Peak Week - Passengers Histogram

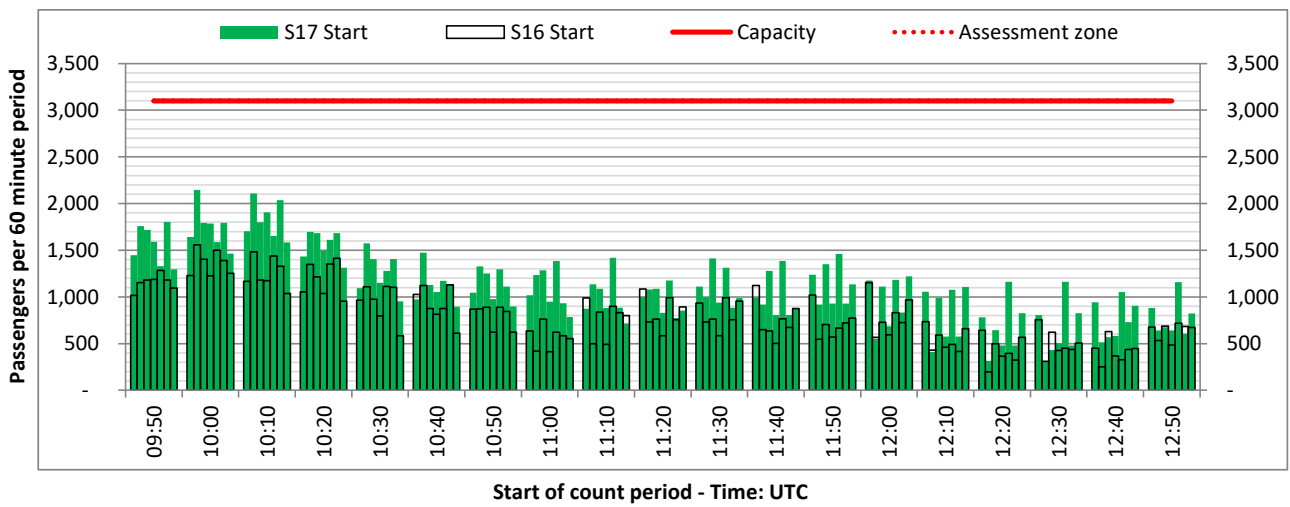
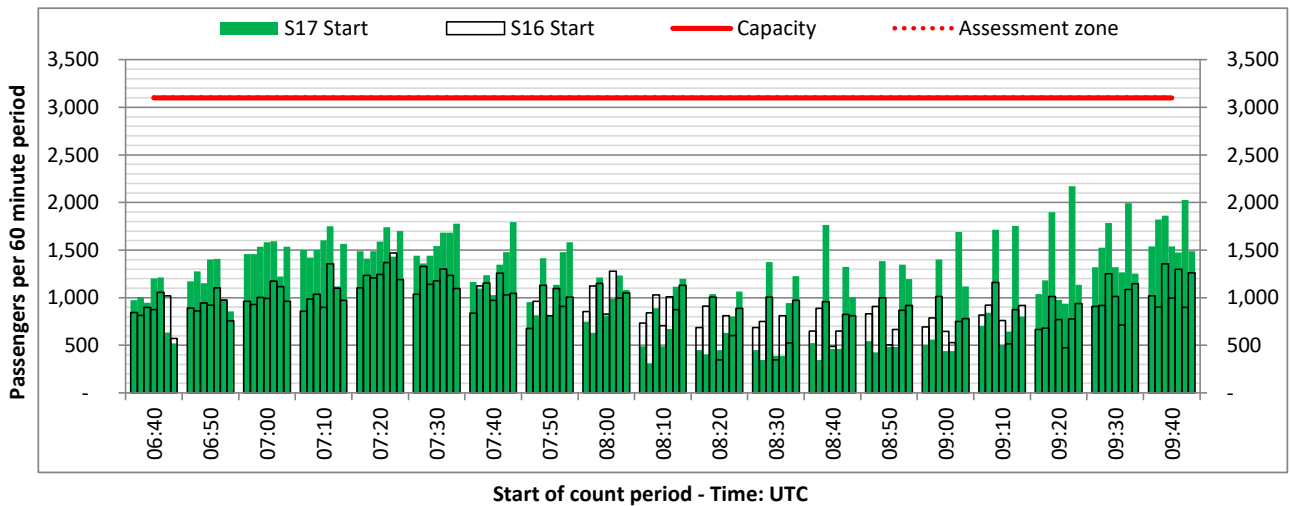
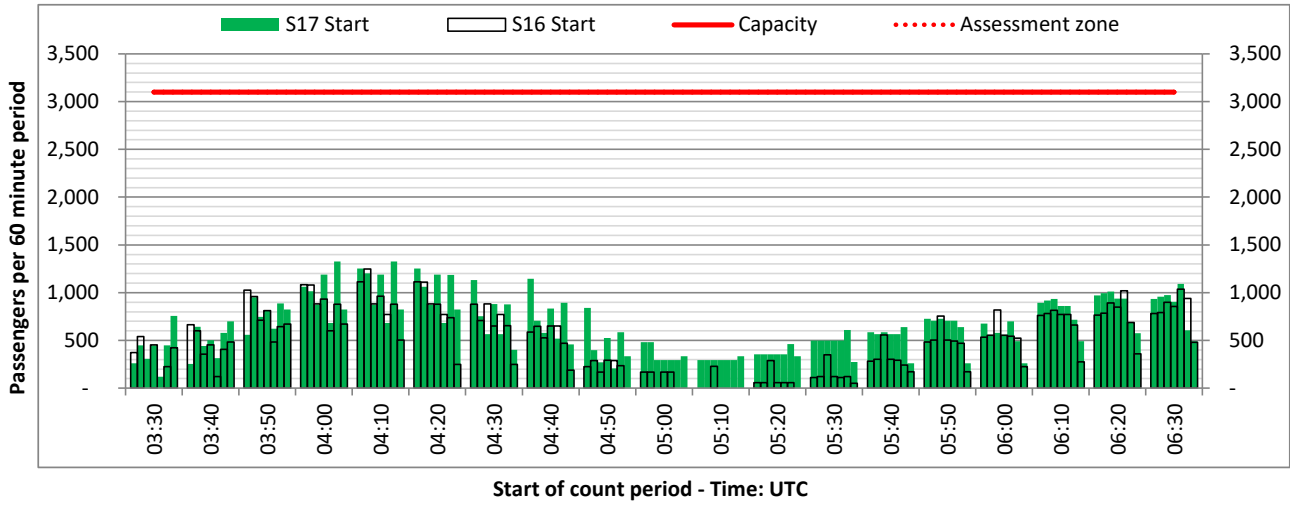
ARRIVAL - 60 minute count rolling every 10 mins (T60/10)



Terminals: Schengen

Operators: All Operators

Days: 1234567



Peak Week - Passengers Histogram

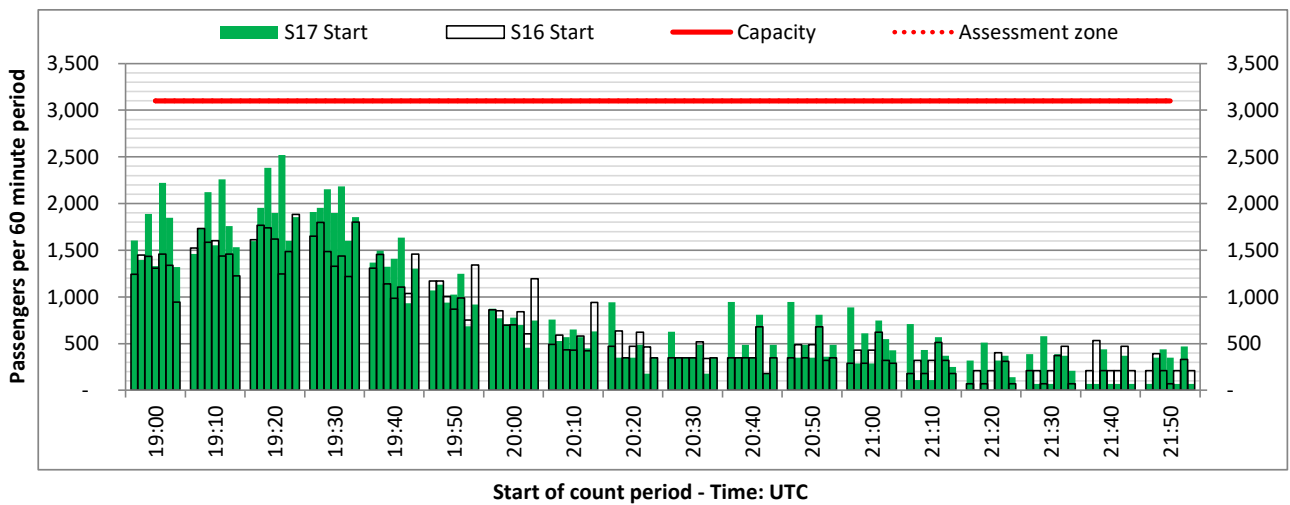
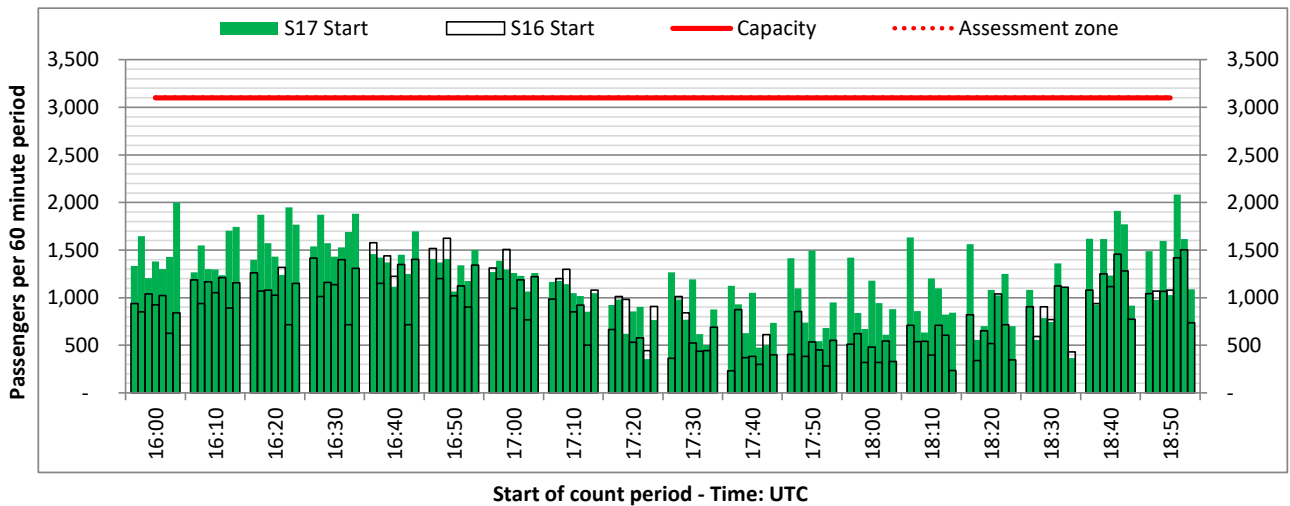
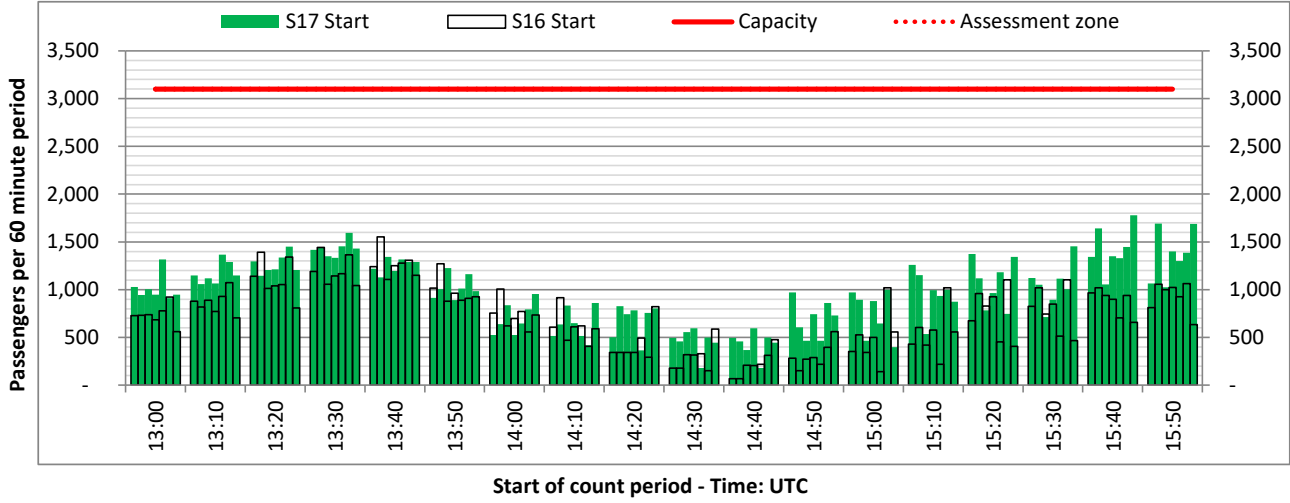
ARRIVAL - 60 minute count rolling every 10 mins (T60/10)



Terminals: Schengen

Operators: All Operators

Days: 1234567



Peak Week - Passengers Histogram

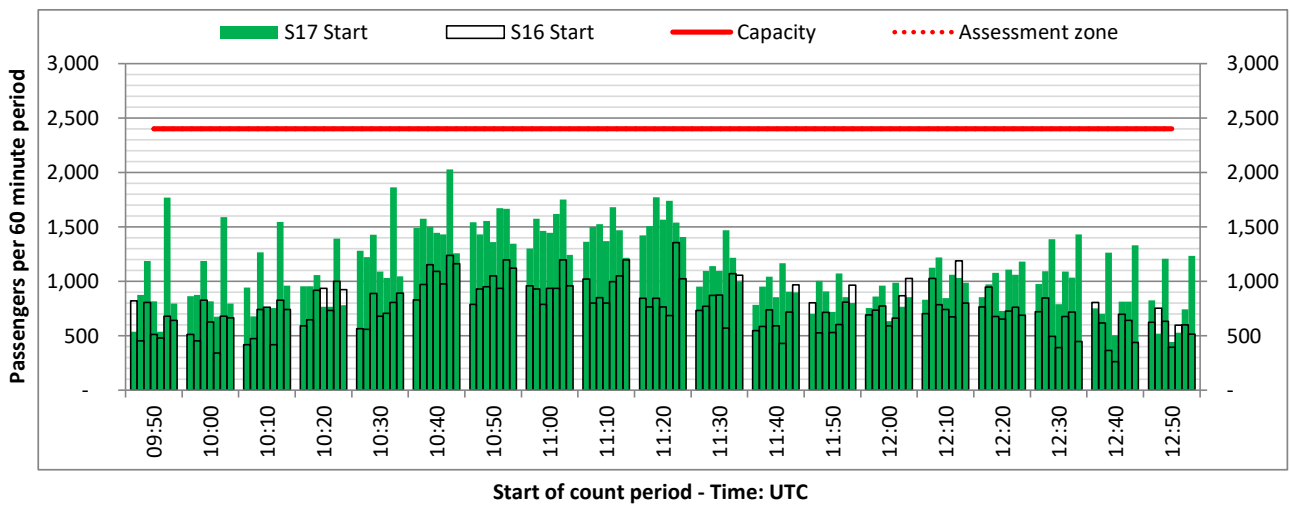
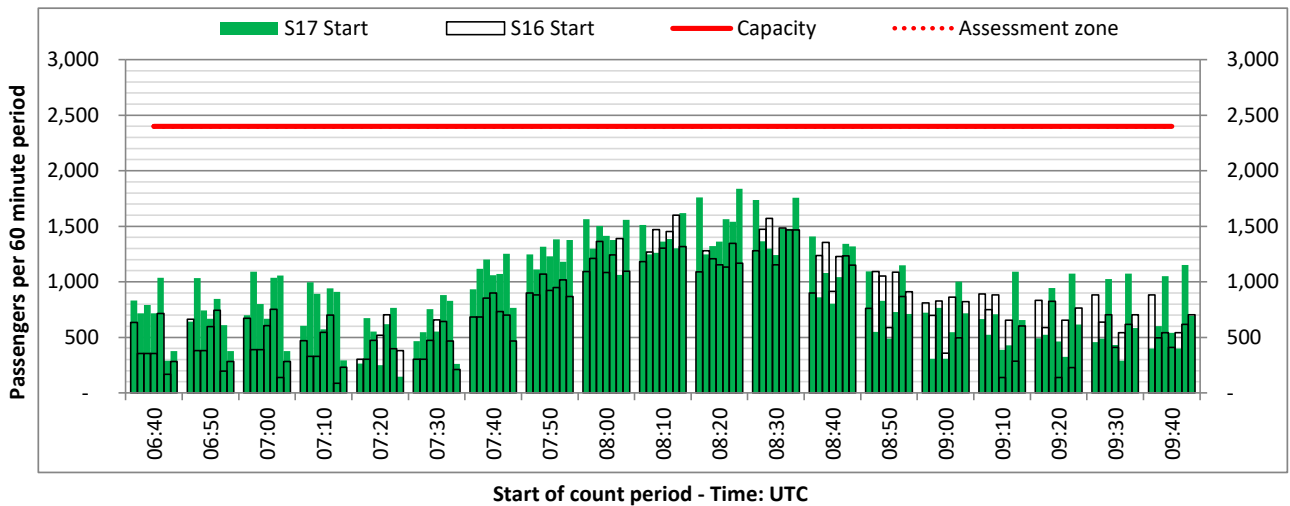
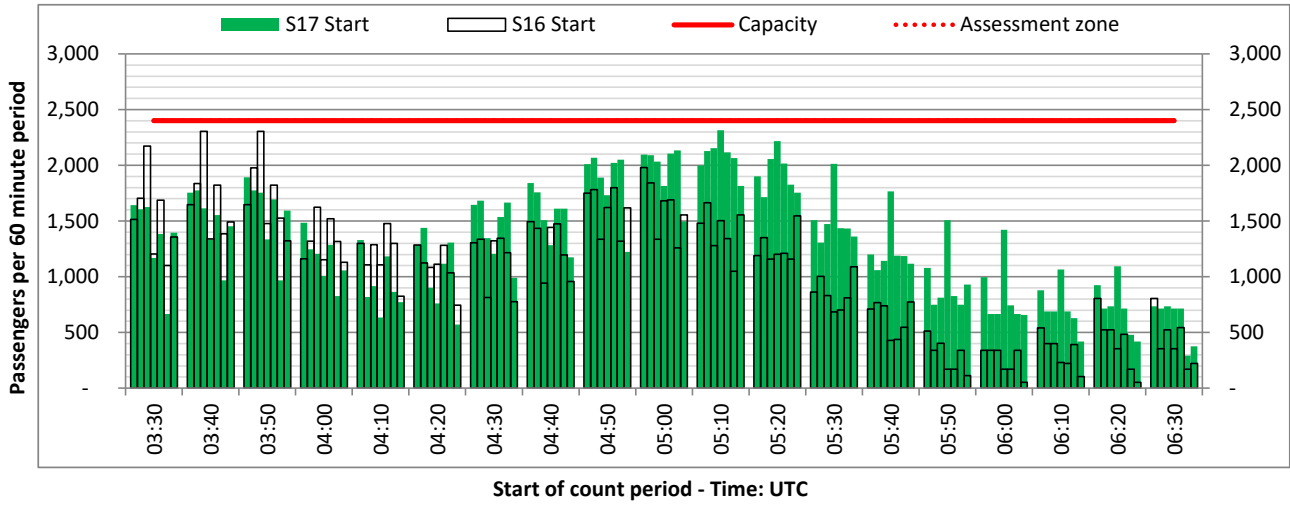
DEPARTURE - 60 minute count rolling every 10 mins (T60/10)



Terminals: Schengen

Operators: All Operators

Days: 1234567



Peak Week - Passengers Histogram

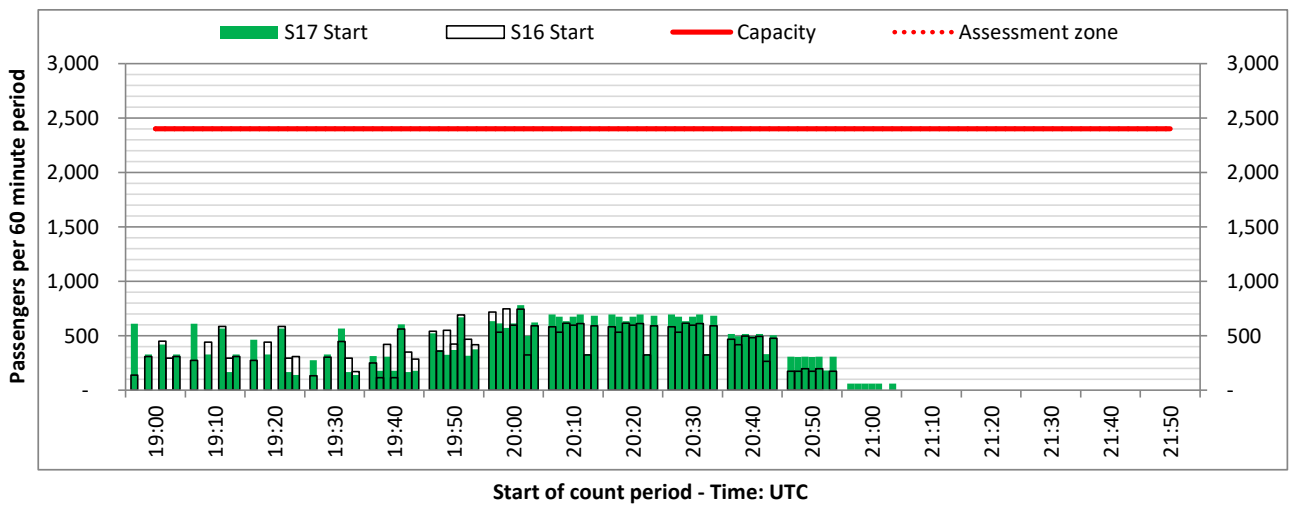
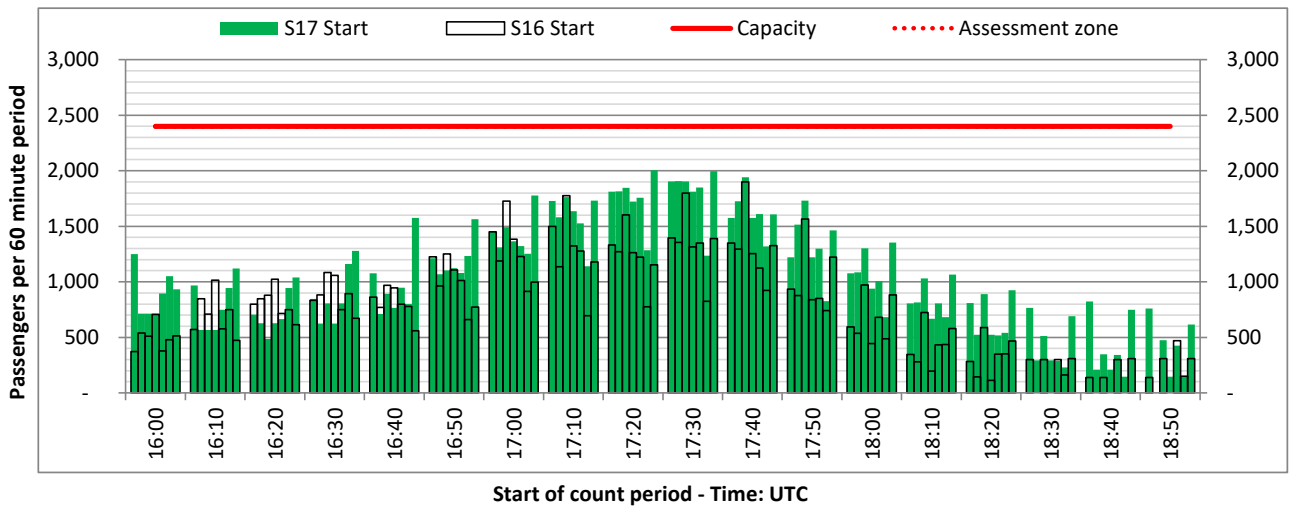
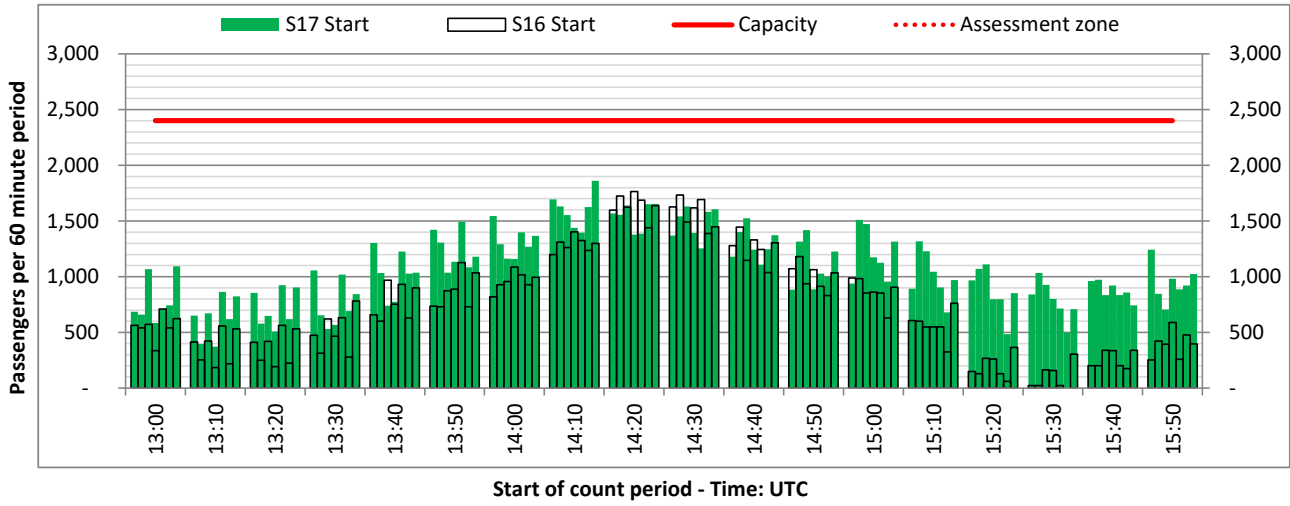
DEPARTURE - 60 minute count rolling every 10 mins (T60/10)



Terminals: Schengen

Operators: All Operators

Days: 1234567



Peak Week - Passengers Histogram

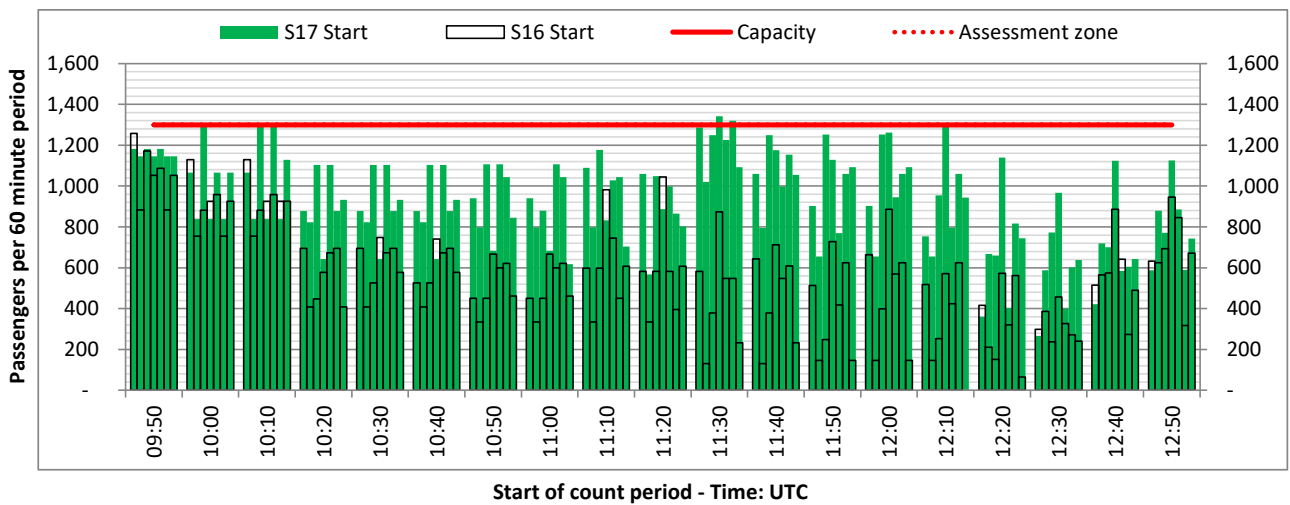
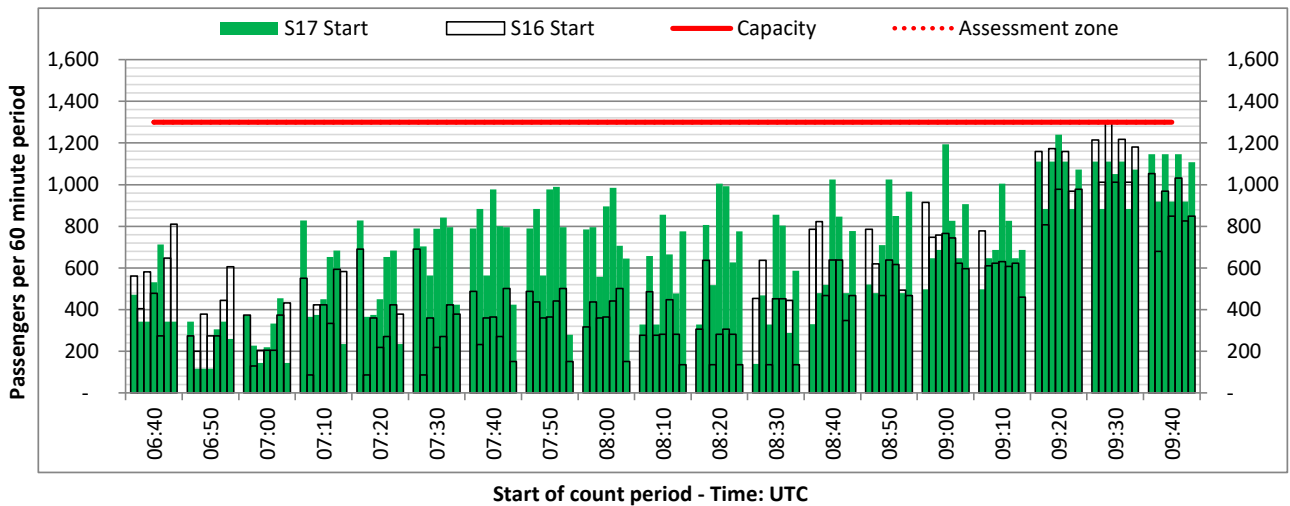
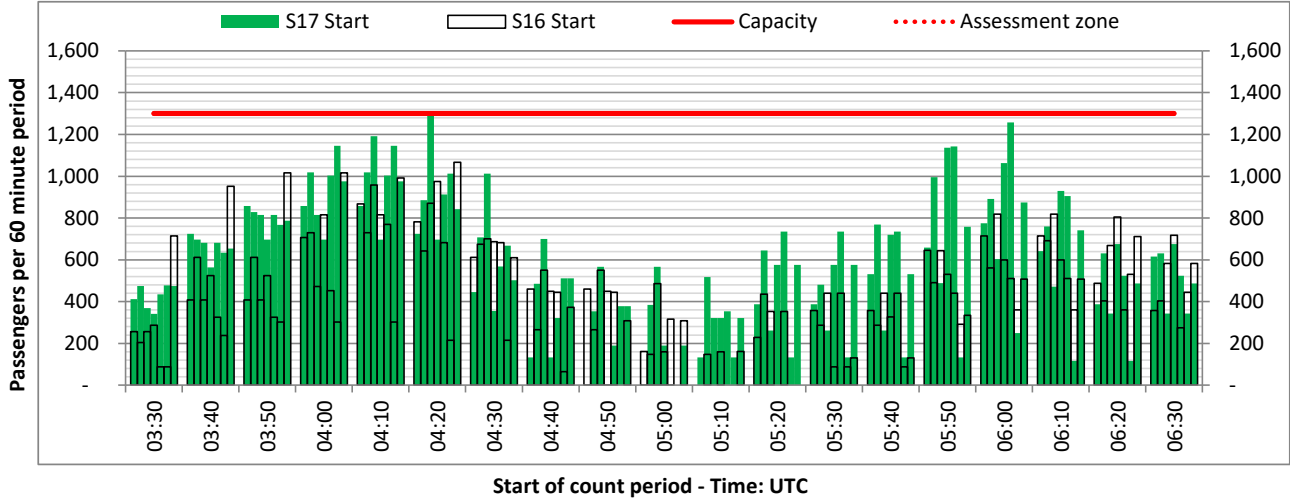


ARRIVAL - 60 minute count rolling every 10 mins (T60/10)

Terminals: Non-Schengen

Operators: All Operators

Days: 1234567



Peak Week - Passengers Histogram

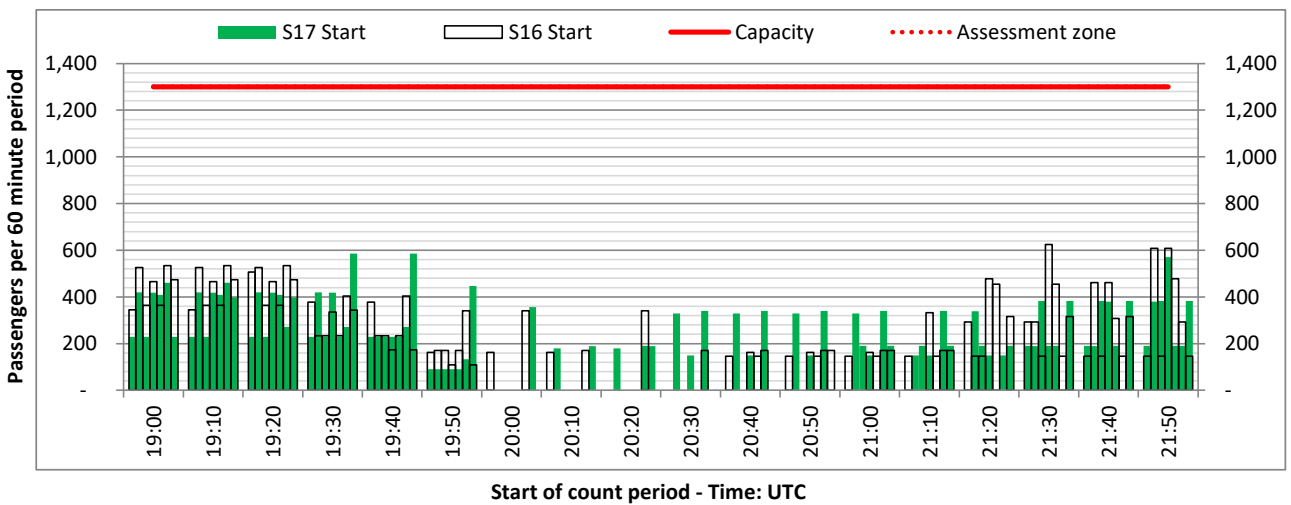
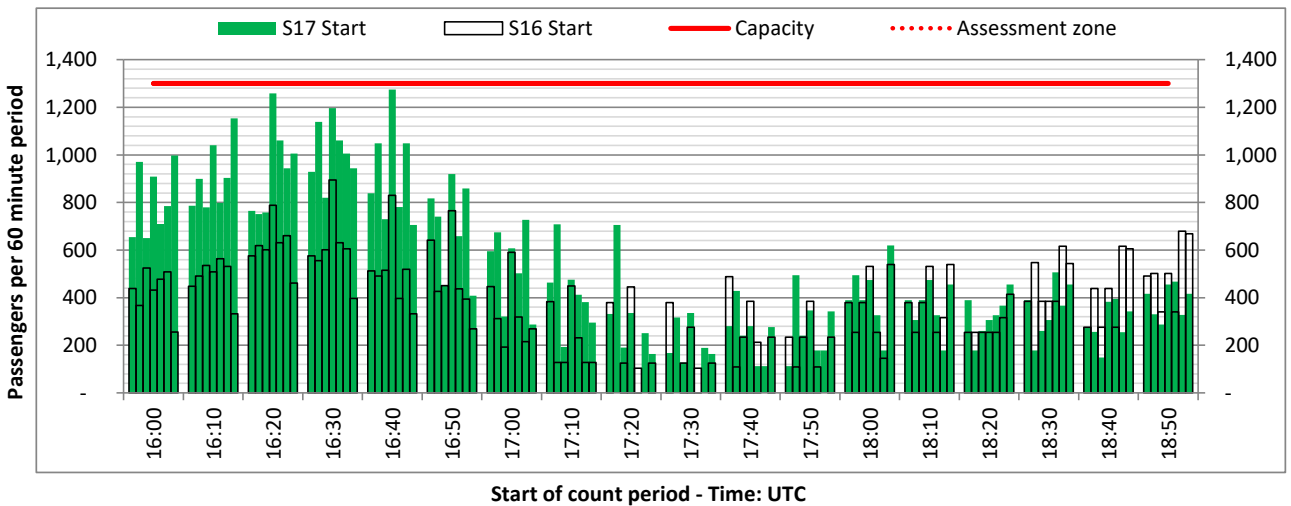
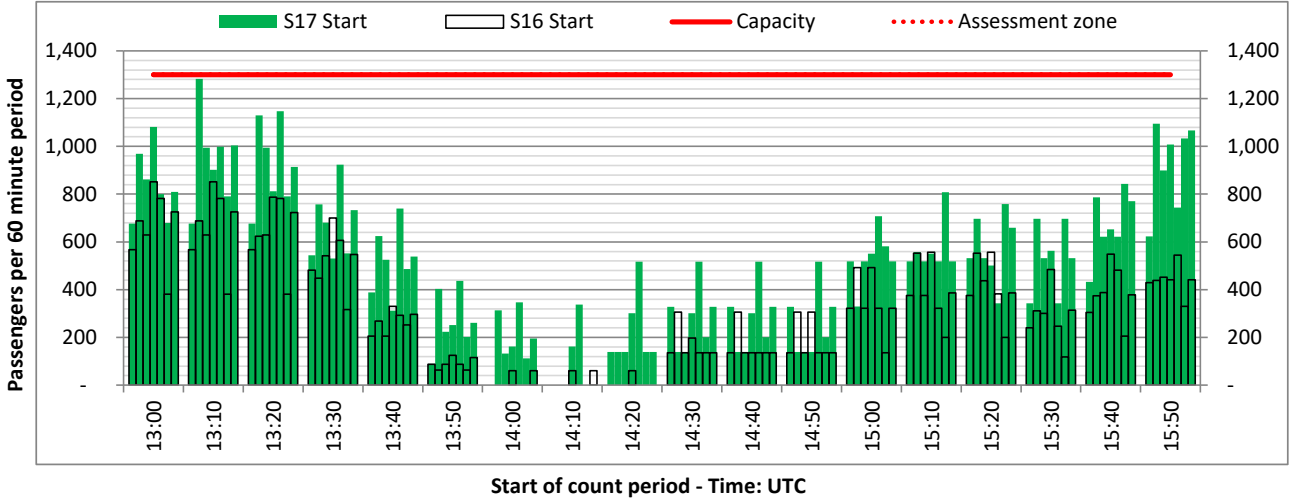
ARRIVAL - 60 minute count rolling every 10 mins (T60/10)



Terminals: Non-Schengen

Operators: All Operators

Days: 1234567



Peak Week - Passengers Histogram

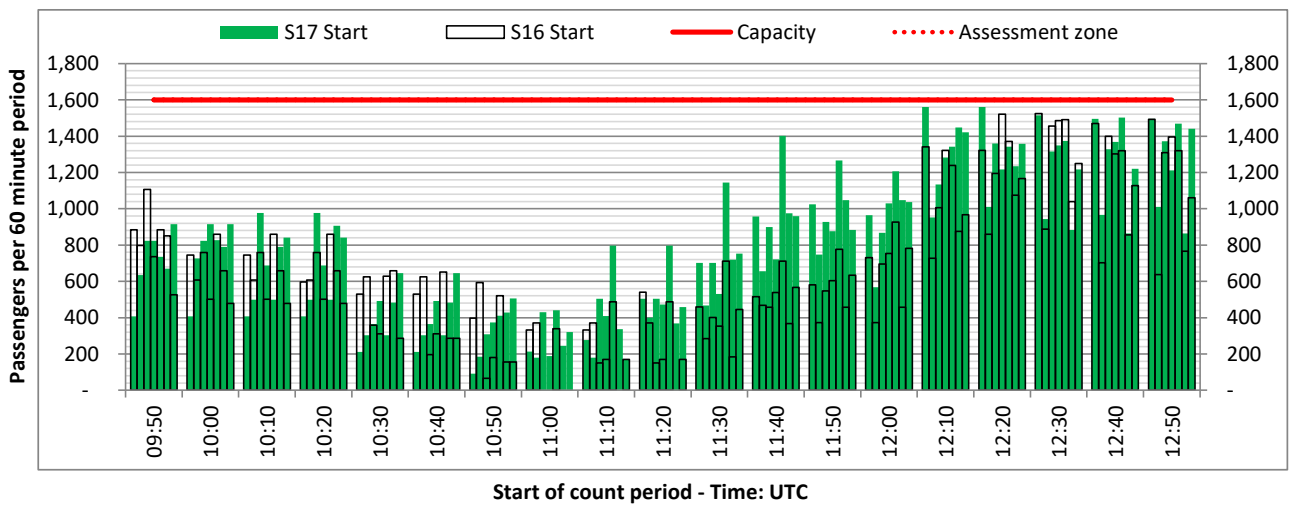
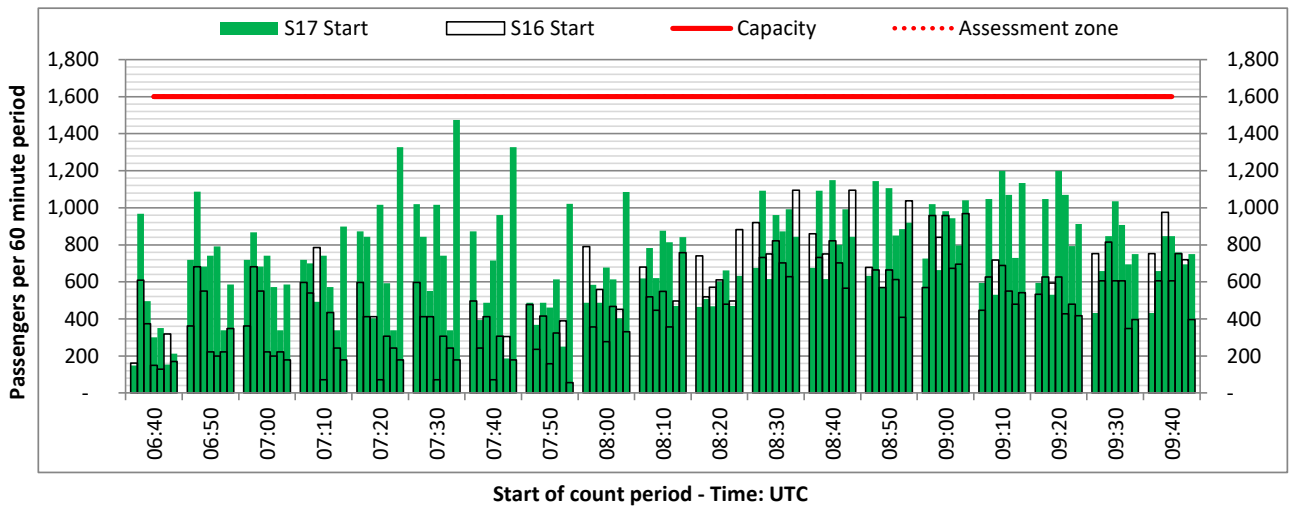
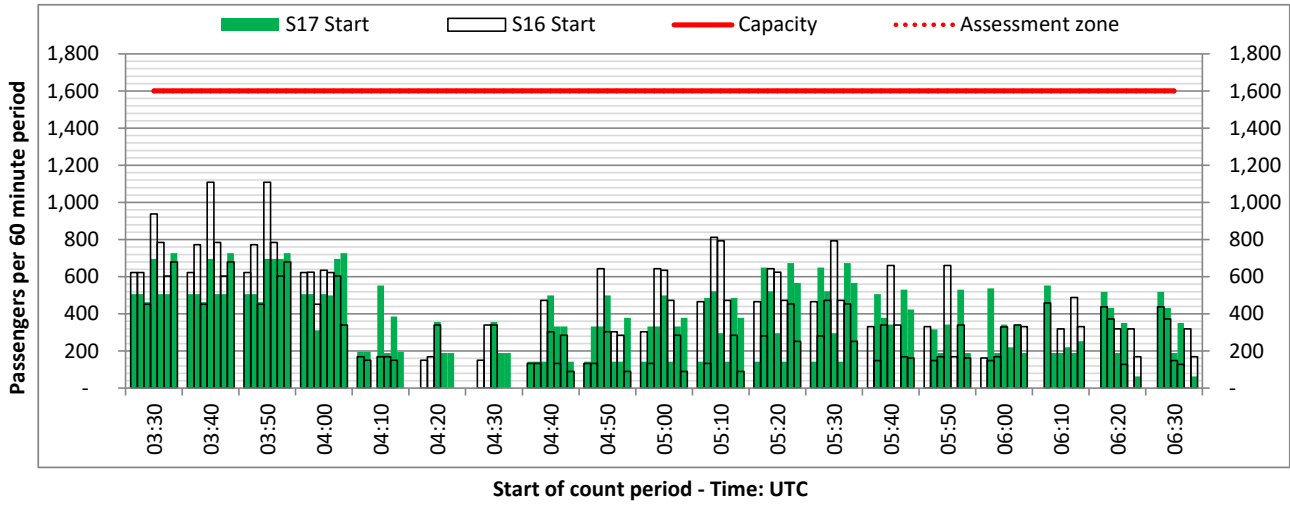
DEPARTURE - 60 minute count rolling every 10 mins (T60/10)



Terminals: Non-Schengen

Operators: All Operators

Days: 1234567



Peak Week - Passengers Histogram

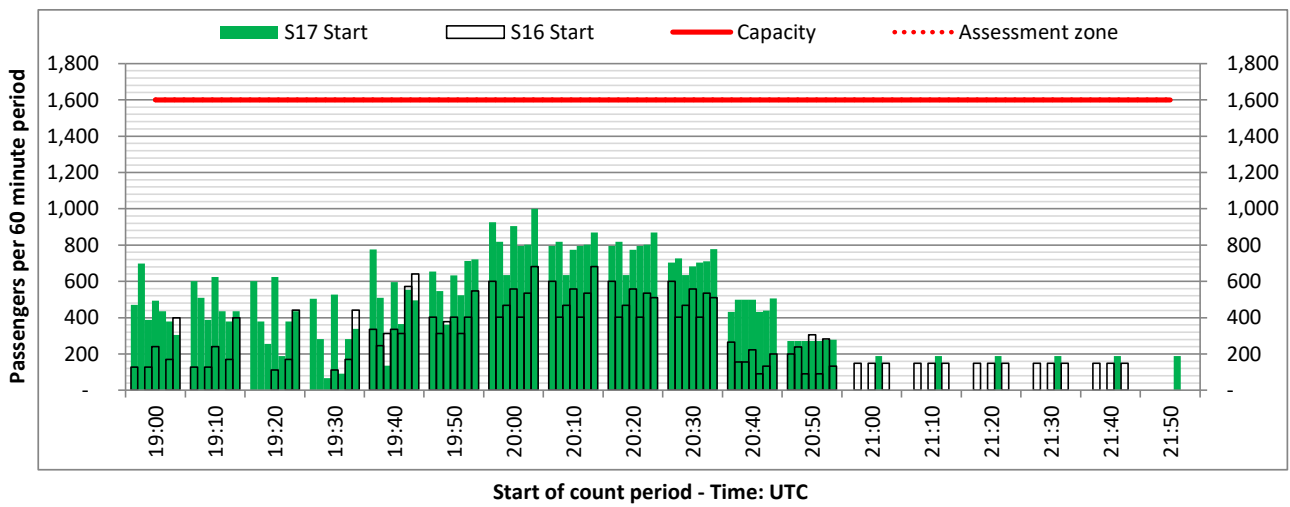
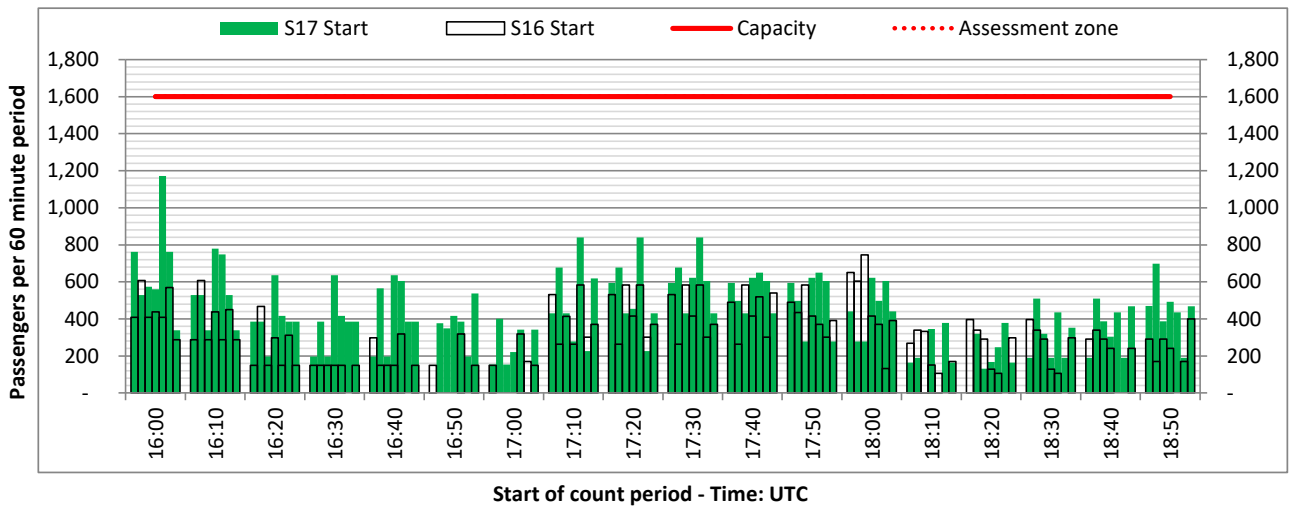
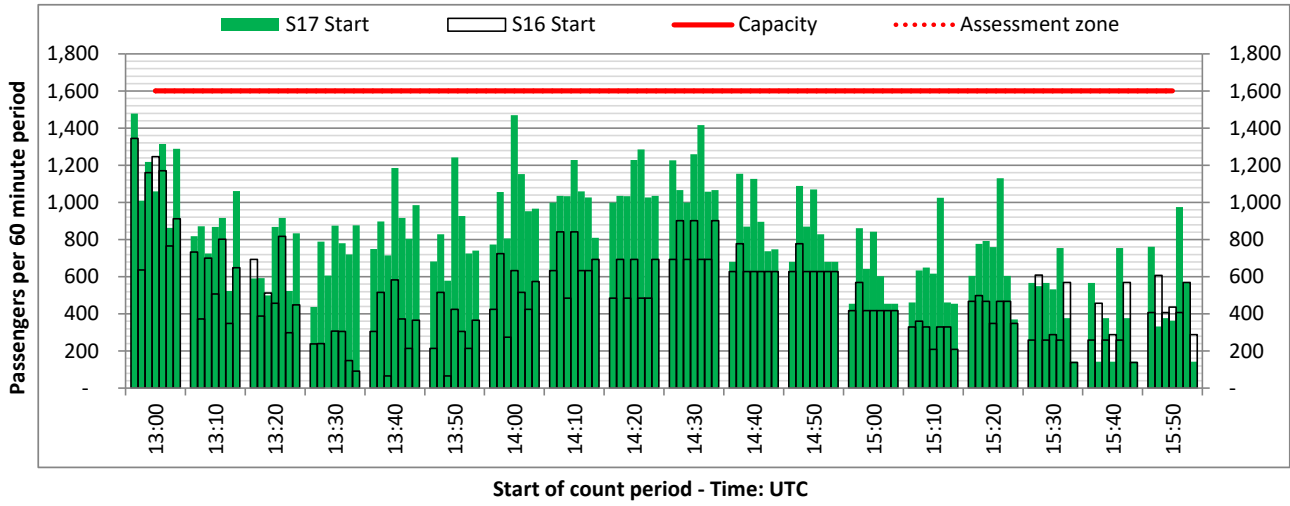
DEPARTURE - 60 minute count rolling every 10 mins (T60/10)



Terminals: Non-Schengen

Operators: All Operators

Days: 1234567



Peak Week - Passengers Histogram

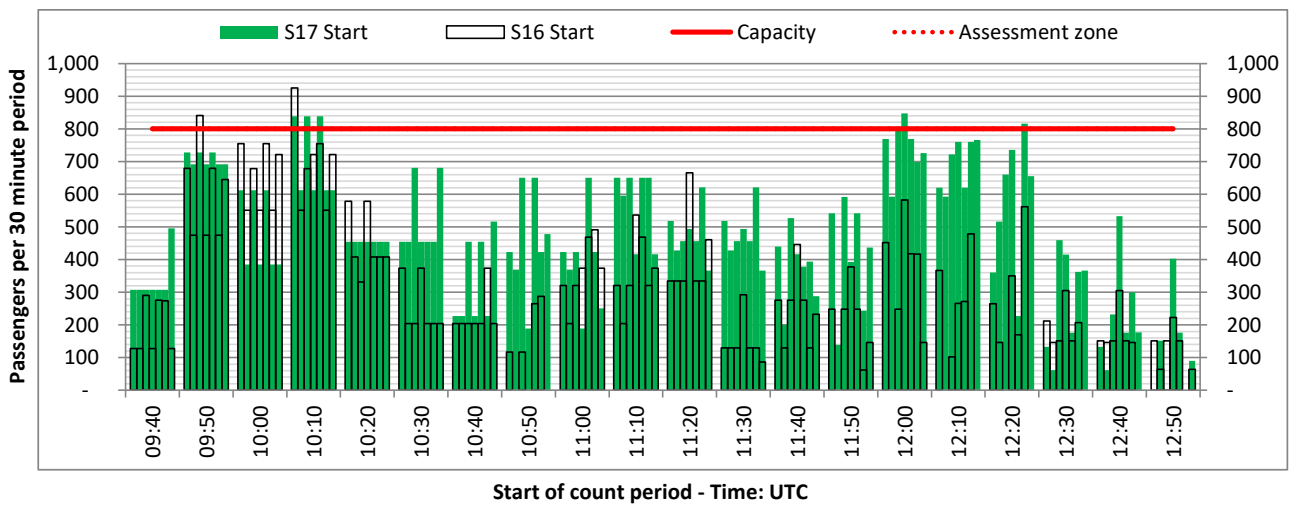
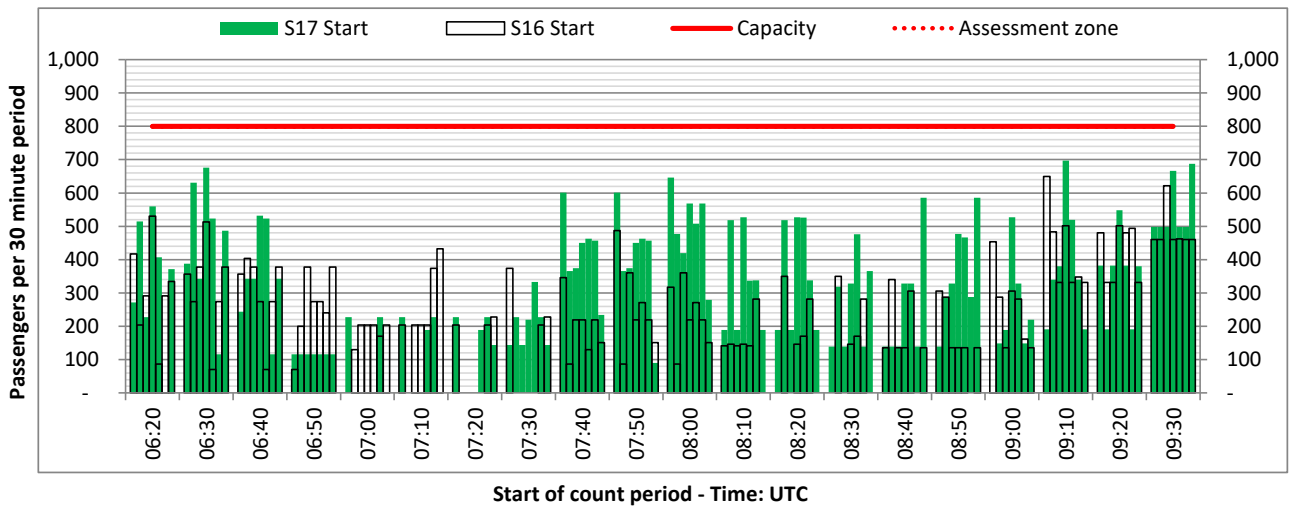
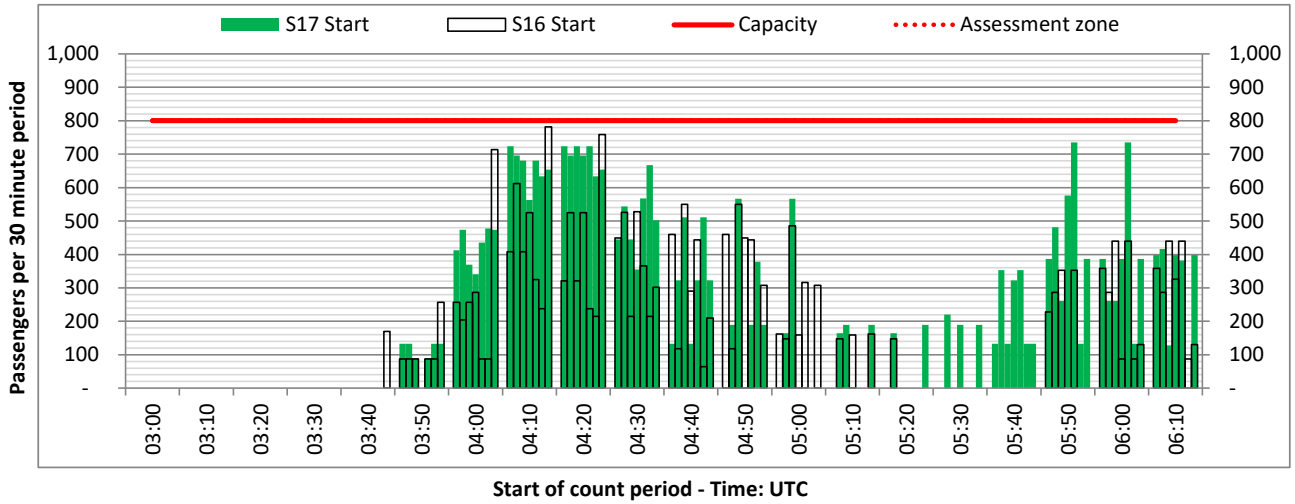
ARRIVAL - 30 minute count rolling every 10 mins (T30/10)



Terminals: Non-Schengen

Operators: All Operators

Days: 1234567



Peak Week - Passengers Histogram

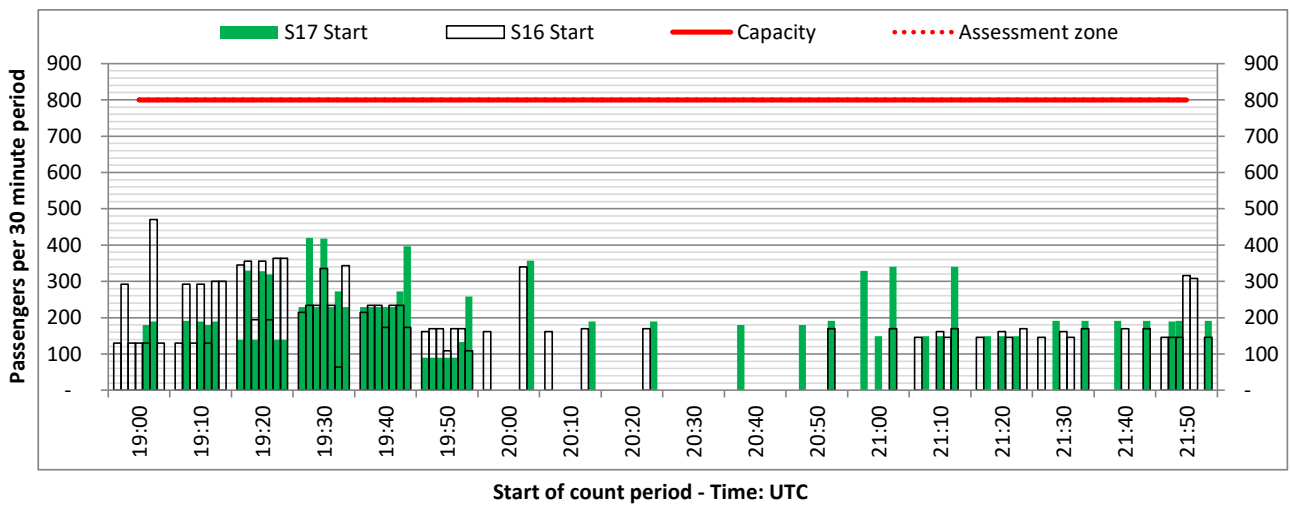
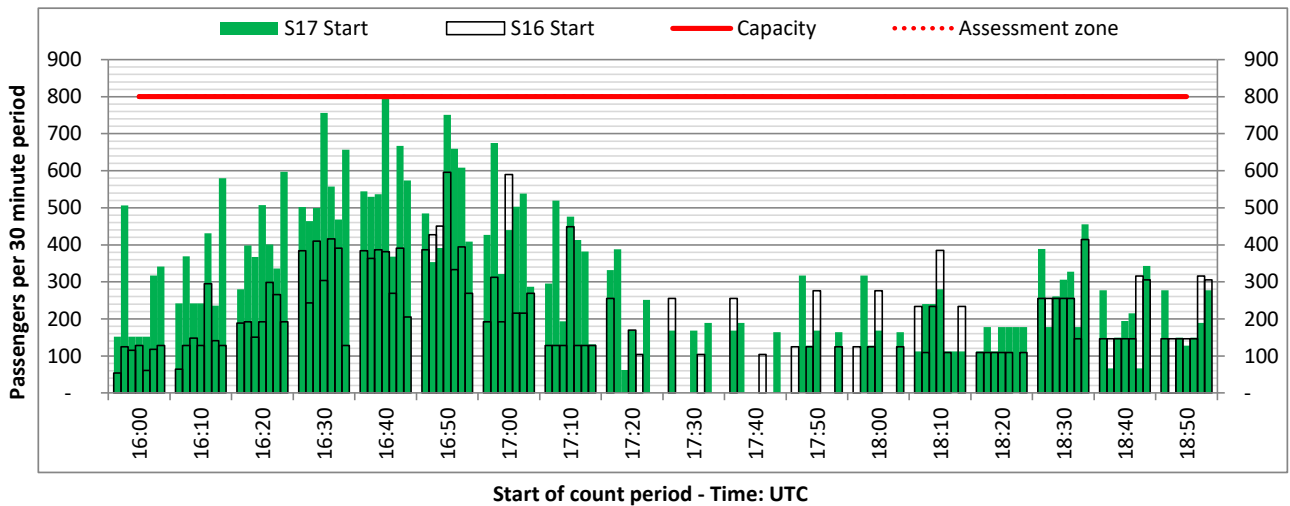
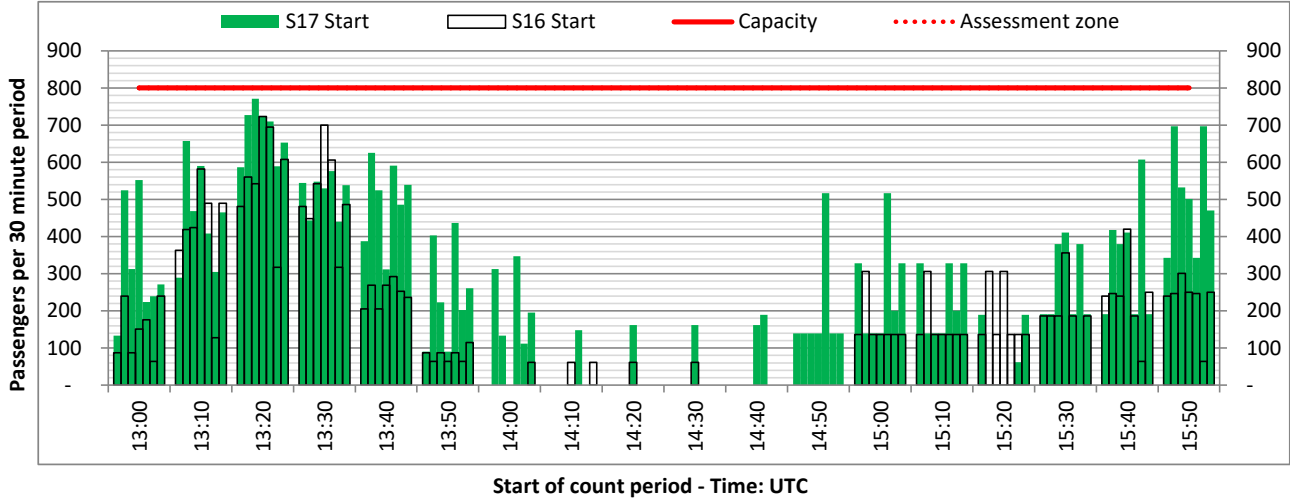
ARRIVAL - 30 minute count rolling every 10 mins (T30/10)



Terminals: Non-Schengen

Operators: All Operators

Days: 1234567



Peak Week - Passengers Histogram

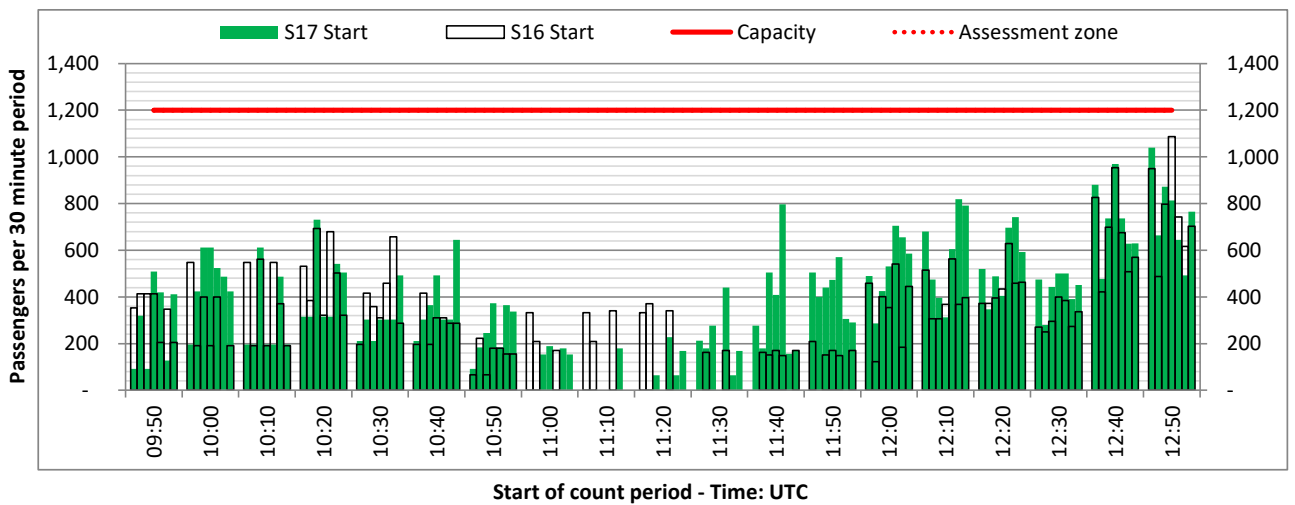
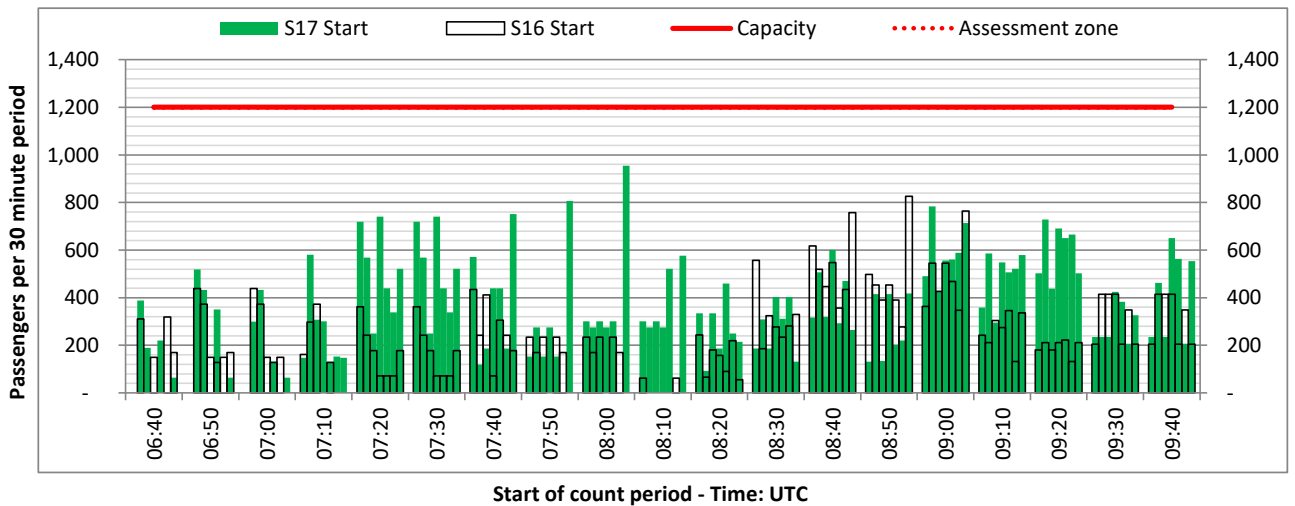
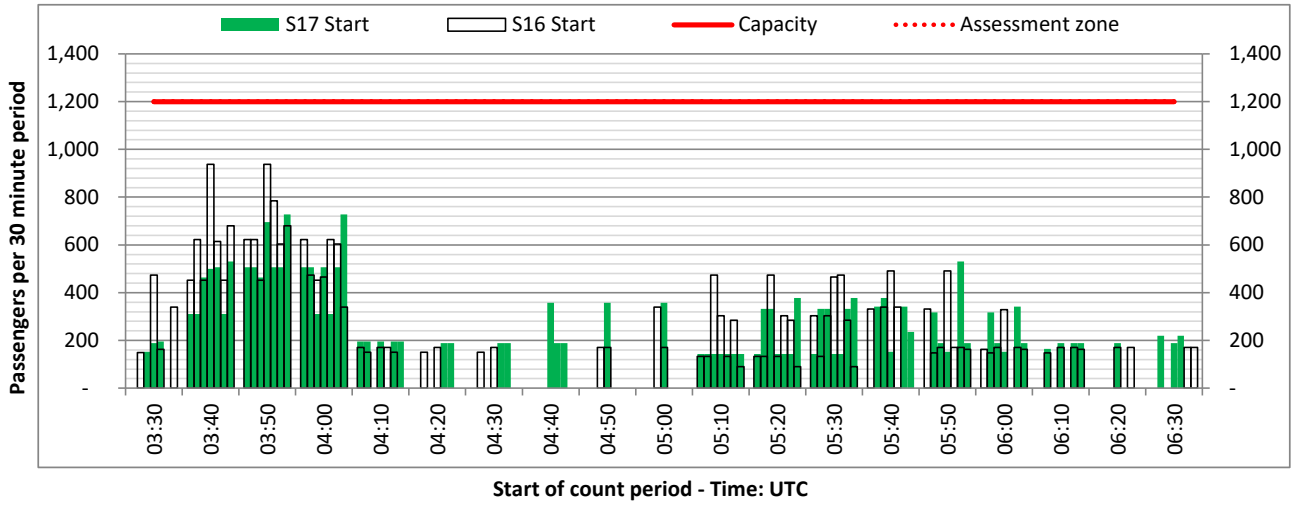
DEPARTURE - 30 minute count rolling every 10 mins (T30/10)



Terminals: Non-Schengen

Operators: All Operators

Days: 1234567



Peak Week - Passengers Histogram

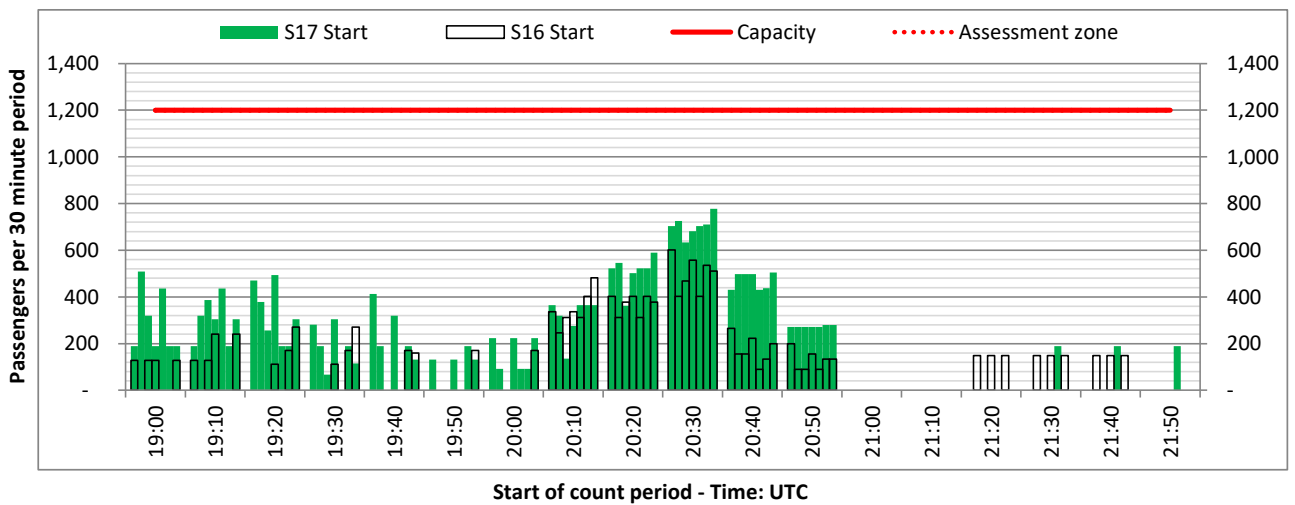
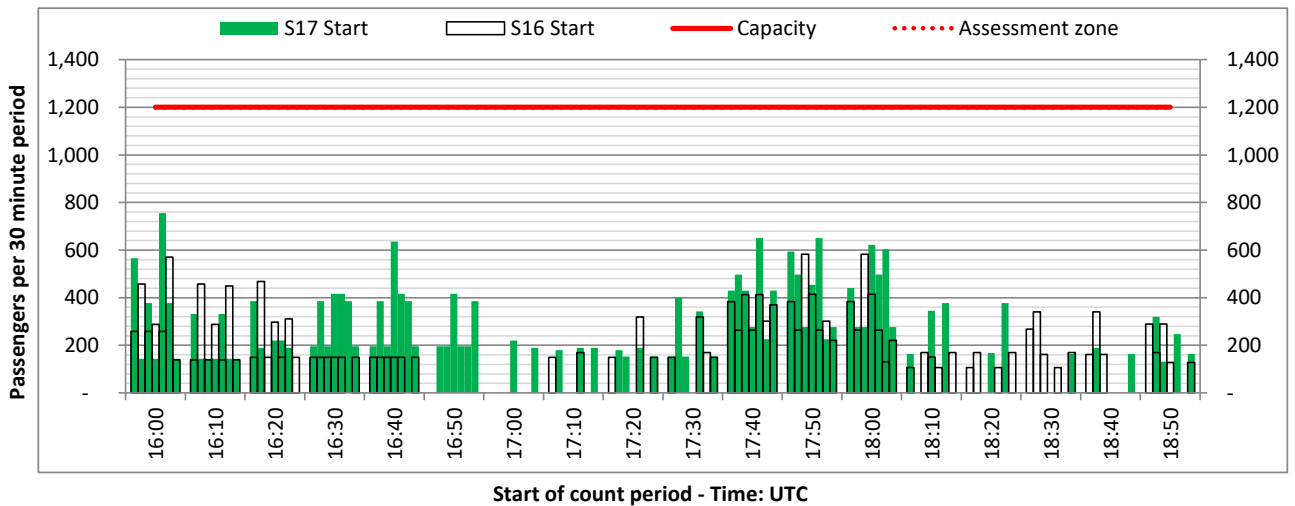
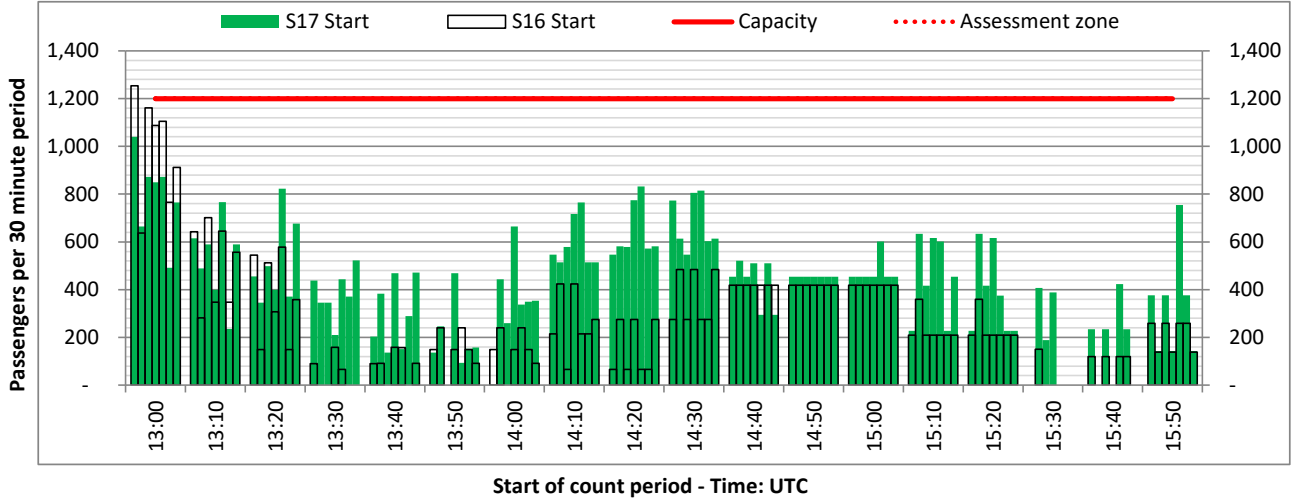


DEPARTURE - 30 minute count rolling every 10 mins (T30/10)

Terminals: Non-Schengen

Operators: All Operators

Days: 1234567



Peak Week - Passengers Histogram

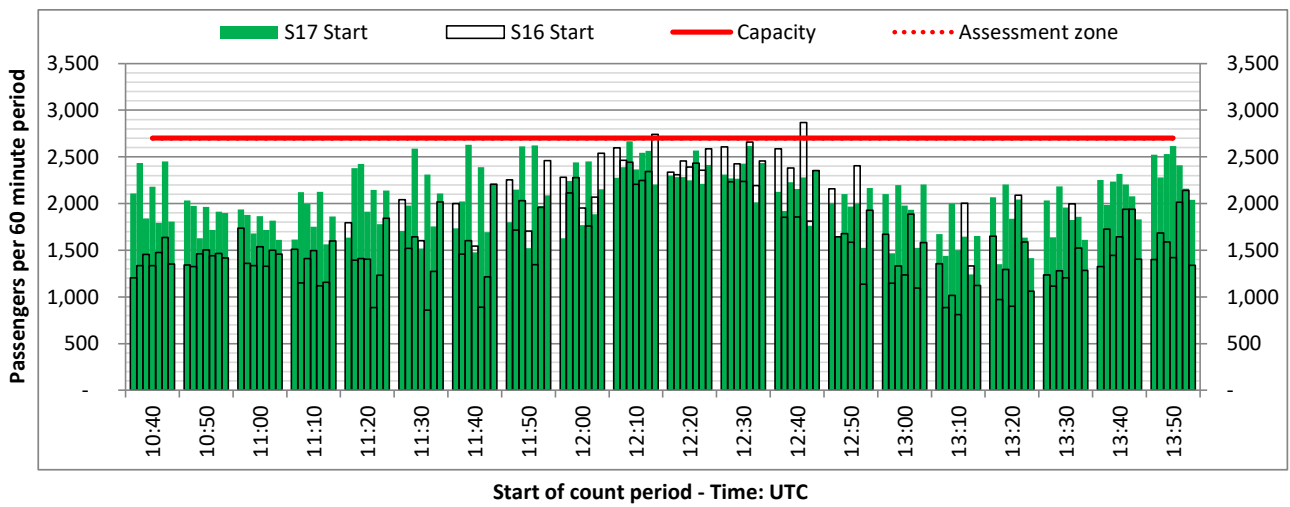
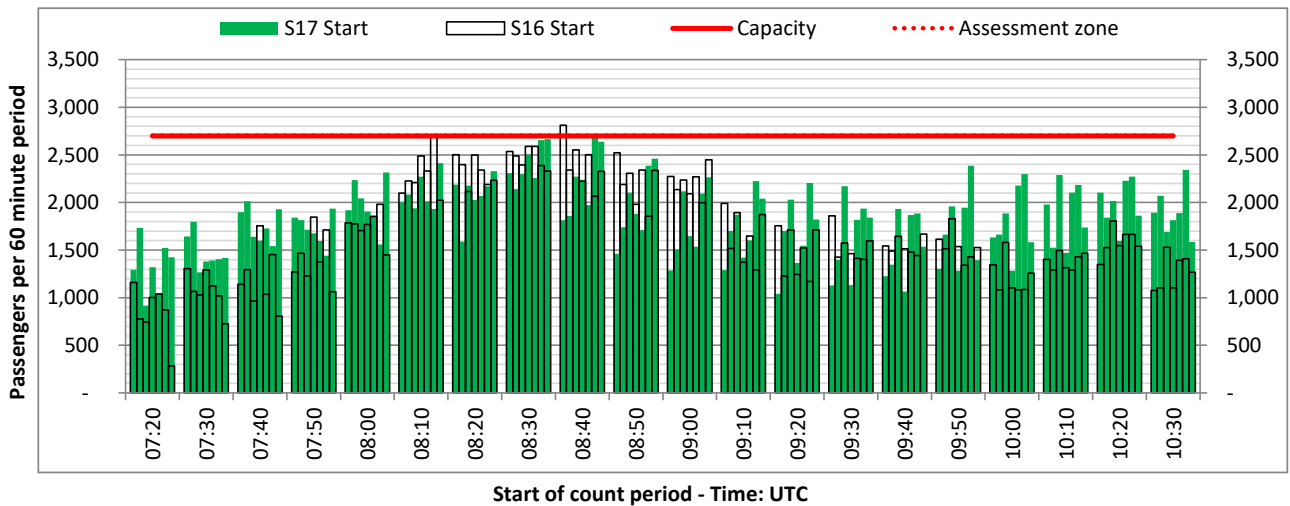
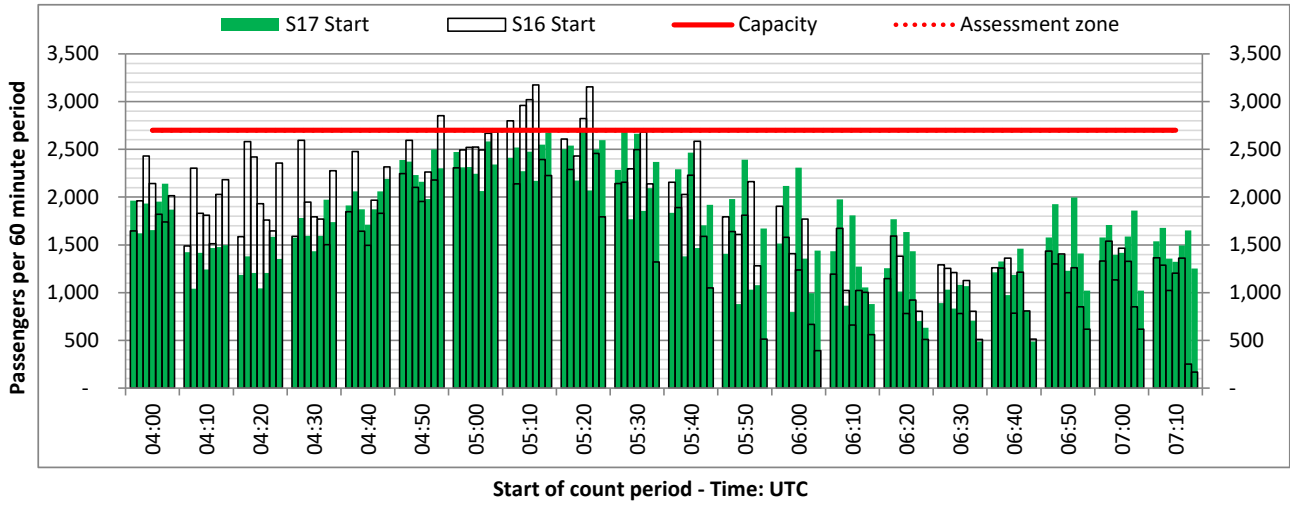
ARRIVAL - 60 minute count rolling every 10 mins (T60/10)



Terminals: All Terminals

Operators: All Operators

Days: 1234567



Peak Week - Passengers Histogram

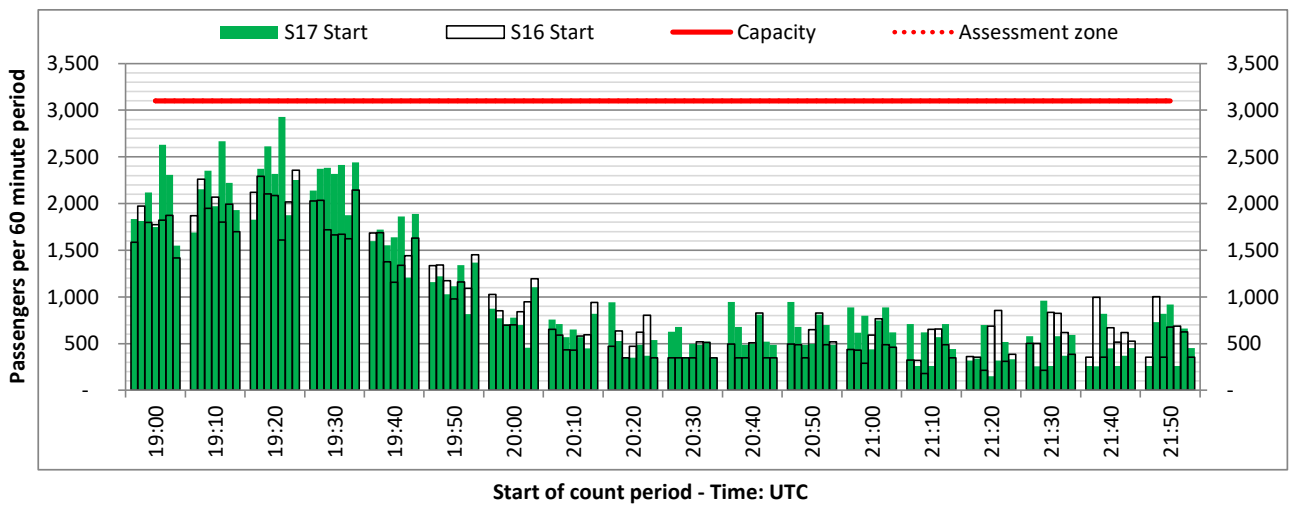
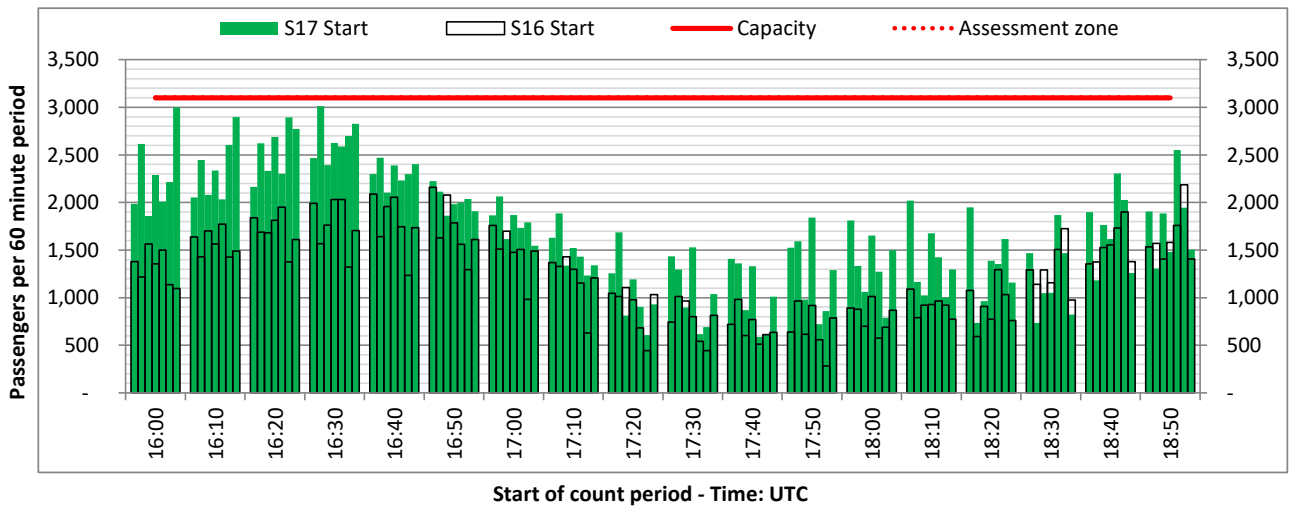
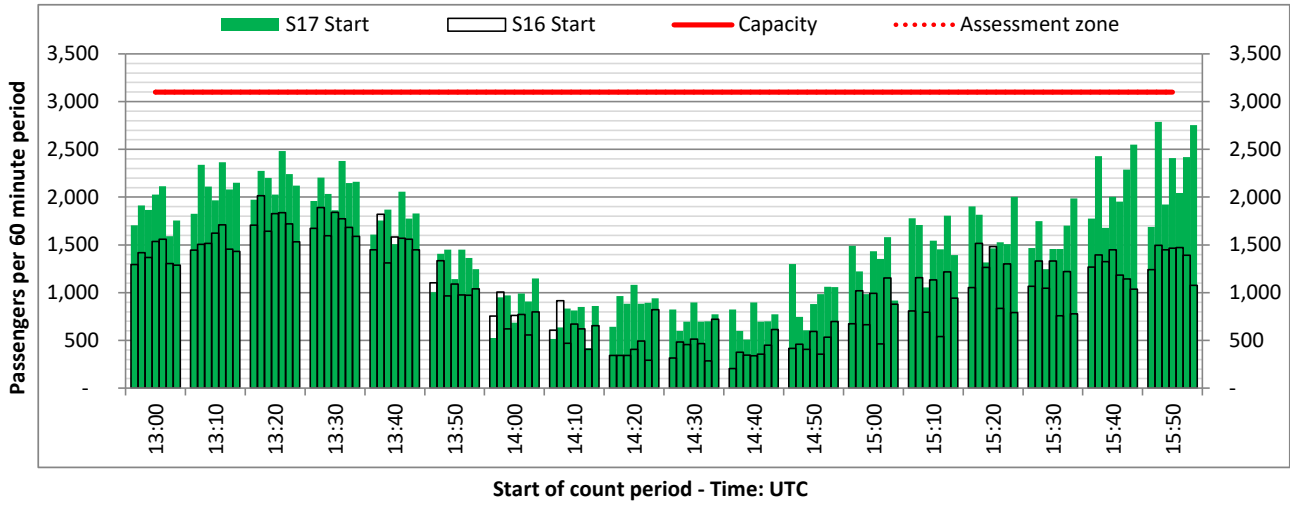


ARRIVAL - 60 minute count rolling every 10 mins (T60/10)

Terminals: All Terminals

Operators: All Operators

Days: 1234567



Peak Week - Passengers Histogram

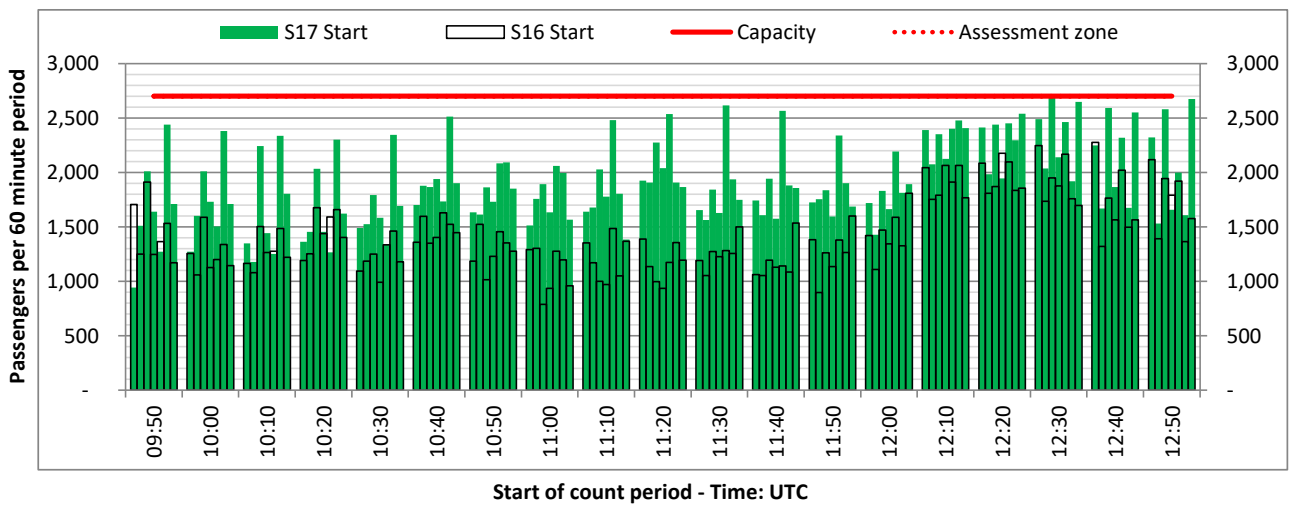
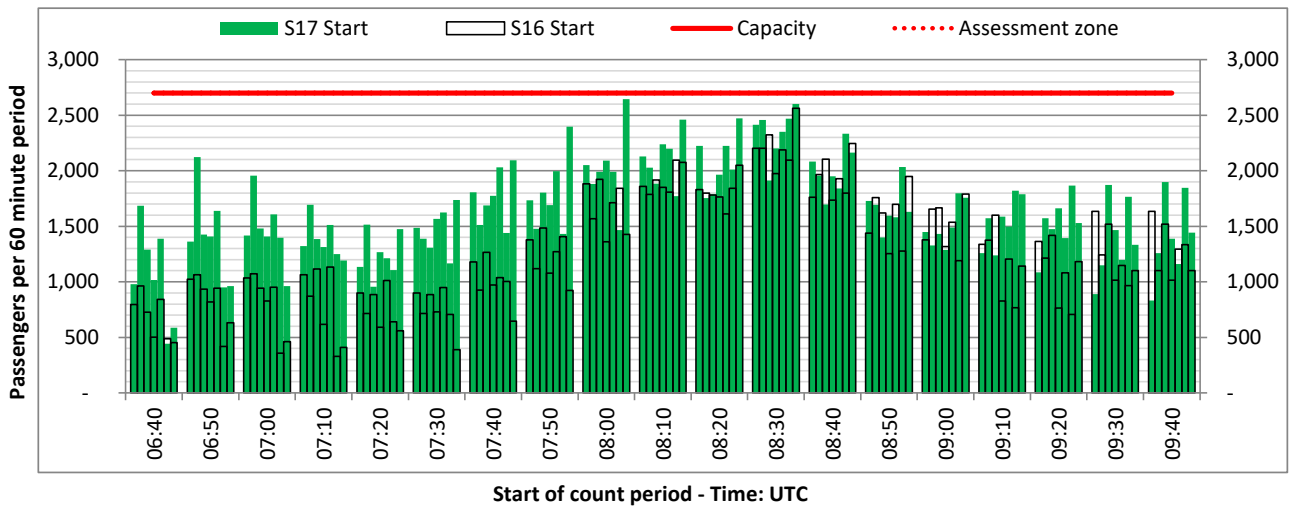
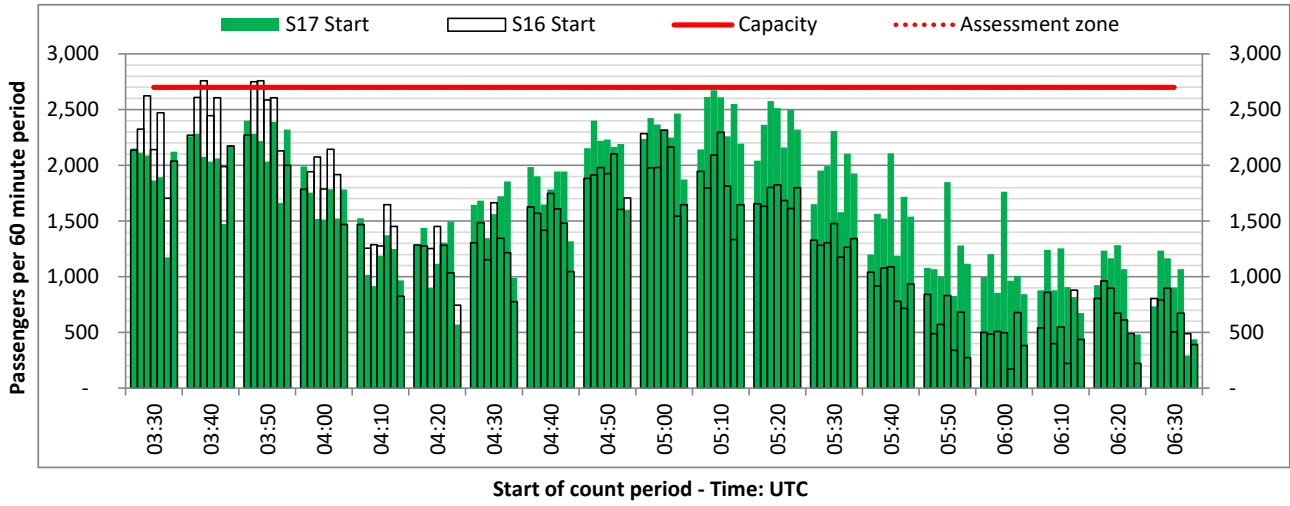
DEPARTURE - 60 minute count rolling every 10 mins (T60/10)



Terminals: All Terminals

Operators: All Operators

Days: 1234567



Peak Week - Passengers Histogram

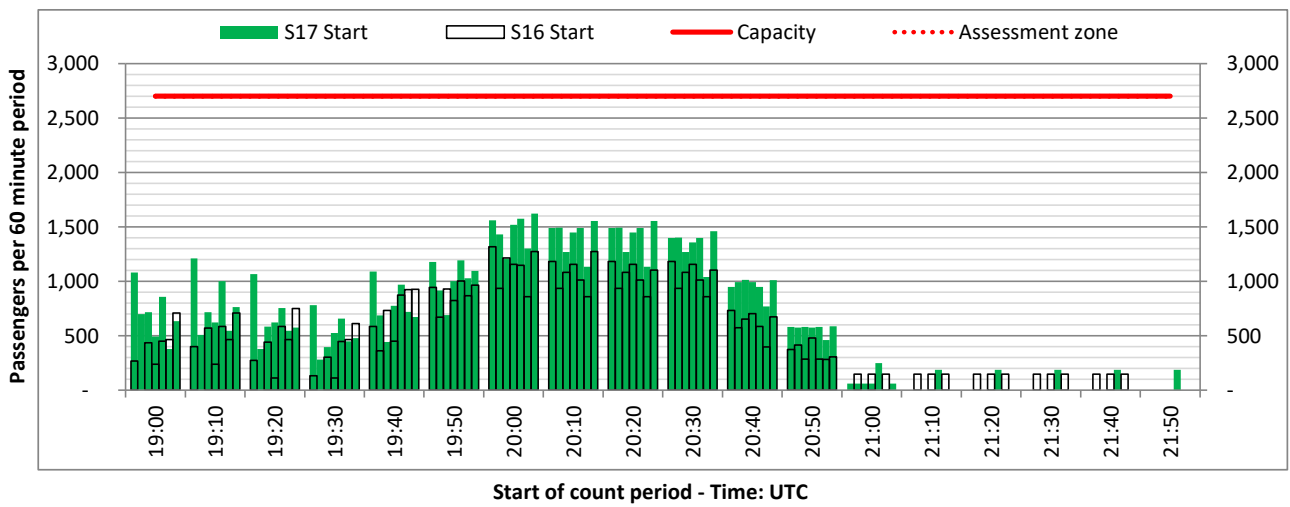
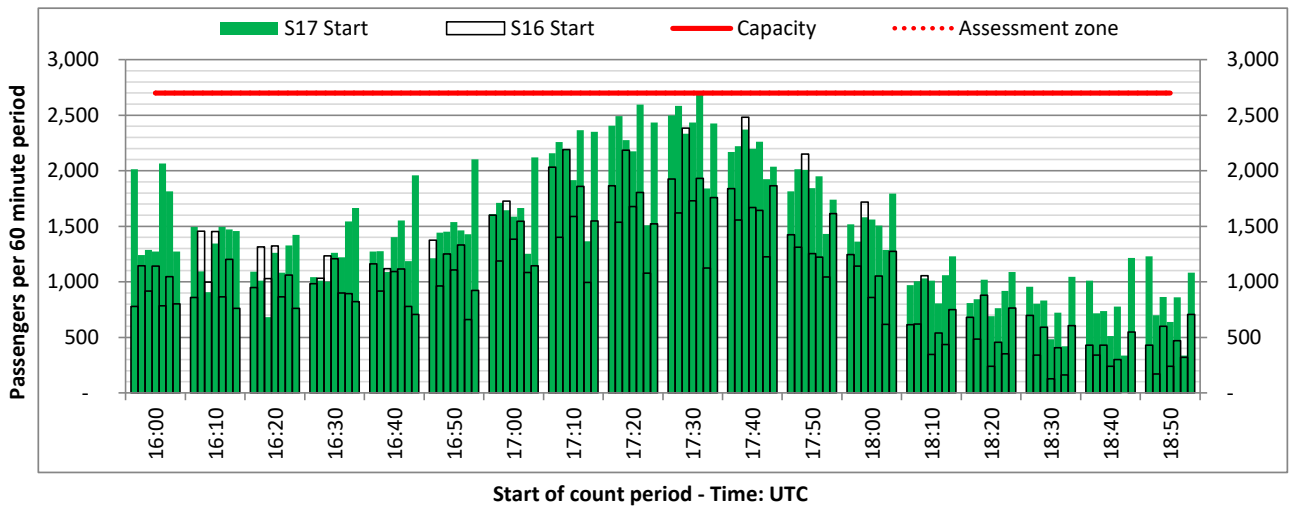
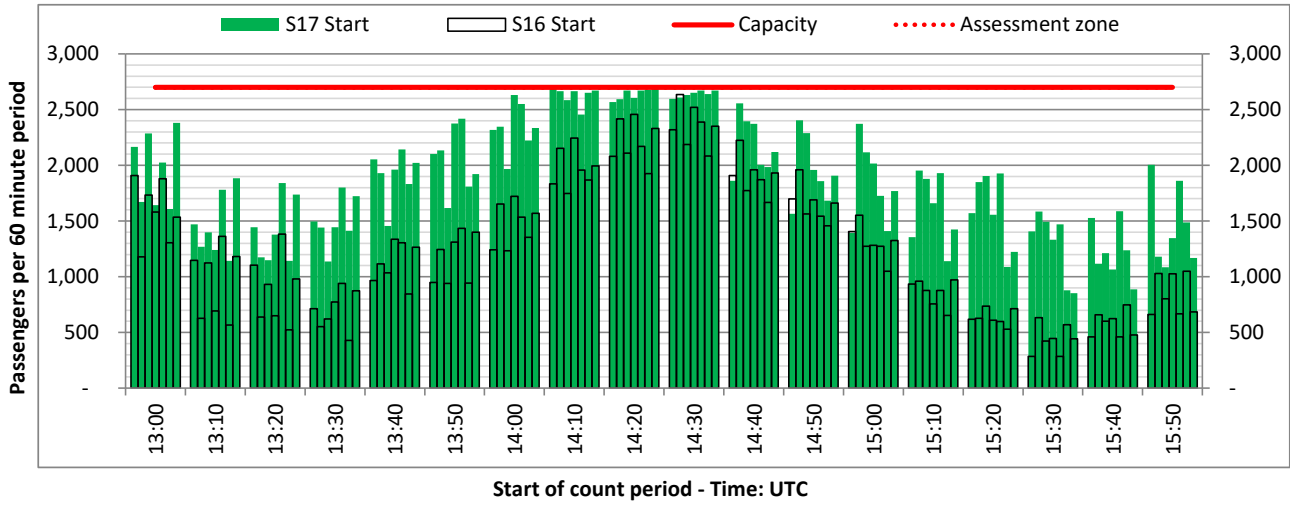
DEPARTURE - 60 minute count rolling every 10 mins (T60/10)



Terminals: All Terminals

Operators: All Operators

Days: 1234567



Air Transport Movement (ATM)	Any aircraft movement which is either a scheduled or chartered passenger or cargo flight.
Common Travel Area (CTA)	Origin or Destination is in Republic of Ireland or the Channel Islands.
Demand	Unconstrained demand before any schedule adjustments have been made.
"Fill-in"	These are gaps in a historic series of slots which the carrier requests to "Fill-in" at Initial Submissions - Fill-ins will be recognisably part of the historic series and will have the same flight details to qualify as a "Fill-in".
Hist (SHL)	Snapshot of historic schedule rolled over from end of the previous equivalent season - as advised to airlines in the SHLs.
ICAO Size A	Aircraft with wingspan between 0.00m - 14.99m.
ICAO Size B	Aircraft with wingspan between 15.00m - 23.99m.
ICAO Size C	Aircraft with wingspan between 24.00m - 35.99m.
ICAO Size D	Aircraft with wingspan between 36.00m - 51.99m.
ICAO Size E	Aircraft with wingspan between 52.00m - 64.99m.
ICAO Size F	Aircraft with wingspan between 65.00m - 80.00m.
Init Coord	Snapshot of schedule immediately after Initial Coordination is completed - as advised to airlines in the SALS.
Passenger Air Transport Movement (PATM)	Any aircraft movement which is either a scheduled or chartered passenger flight.
Start	Snapshot of schedule shortly before the start of the scheduling season (exact date given below where used).
Time: Local	Times shown are in LOCAL time for the airport/scheduling season.
Time: UTC	Times shown are in Universal Time Constant (UTC).

Data snapshot descriptions

S16 Start	S16 schedule as cleared on Tue 22-Mar-16.
S16 End	S16 schedule as cleared on Thu 20-Aug-15.
S17 Start	S17 schedule as cleared on Mon 20-Mar-17.
Peak Week	Peak week for S16 is Mon 22-Aug-16 to Sun 28-Aug-16. Peak week for S17 is Mon 11-Sep-17 to Sun 17-Sep-17.

For ACL use

	Airport-Season-Branch-Resource	From date	To date	Time
Full Season Rep 1	WAW-S16-SOS-Standard	Sun 27-Mar-2016	Sat 29-Oct-2016	UTC
Full Season Rep 2	WAW-S16-Live-Standard	Sun 27-Mar-2016	Sat 29-Oct-2016	UTC
Full Season Rep 3	WAW-S17-SOS-Standard	Sun 26-Mar-2017	Sat 28-Oct-2017	UTC
	Airport-Season-Branch-Resource	From date	To date	Time
Peak Week Rep 1	WAW-S16-SOS-Standard	Mon 22-Aug-2016	Sun 28-Aug-2016	UTC
Peak Week Rep 2	WAW-S16-Live-Standard	Mon 22-Aug-2016	Sun 28-Aug-2016	UTC
Peak Week Rep 3	WAW-S17-SOS-Standard	Mon 11-Sep-2017	Sun 17-Sep-2017	UTC