

# Dublin Airport (DUB)

## Summer 2017 (S17)



### Start of Season Report

Report Date: Wed 22-Mar-2017

#### Headlines

	S17 Start	vs. S16 Start	vs. S16 End
Total Air Transport Movements (Passenger & Freight)	138,834	▲ 4.6%	▲ 5.2%
Total Passenger Air Transport Movements	136,457	▲ 4.6%	▲ 5.4%
Total Passenger Air Transport Movement Seats	23,238,222	▲ 6.0%	▲ 6.4%
Percentage of allocated slots cleared as requested (OK)	96.6%		

#### Page Content

2	Runway Scheduling Limits
3	ATM Allocation by Operator (Full season and Peak Week Comparison)
4	Peak Week - Allocation and Slot Adjustment Distribution by Operator
5	Significant Route Changes
6	Full Season - ATM Analysis
7	Full Season - PATM Seats Analysis
8	Full Season - Terminal Analysis
9	Full Season - Aircraft Size Analysis
10	Full Season - Seasonality
11	Peak Week - Hourly Runway Demand
12	Peak Week - Hourly Runway Allocation
13	Peak Week - Hourly Runway Allocation Comparison (S17 Start vs. S16 Start)
14	Peak Week - Hourly Runway Allocation Comparison (S17 Start vs. S16 End)
15	Peak Week Histogram - Departure Passengers (T60/10) - 1 - All Operators
16	Peak Week Histogram - Departure Passengers (T120/10) - 1 - All Operators
17	Peak Week Histogram - Departure Passengers (T60/10) - 2 - All Operators
18	Peak Week Histogram - Departure Passengers (T120/10) - 2 - All Operators
19	Peak Week Histogram - Arrival Passengers (T60/10) - 1 - All Operators
20	Peak Week Histogram - Arrival Passengers (T60/10) - 2 - AM - All Operators
21	Peak Week Histogram - Arrival Passengers (T60/10) - 2 - PM - All Operators
22	Glossary

S16 scheduling season runs from Sun 27-Mar-2016 to Sat 29-Oct-2016 (217 days).

S17 scheduling season runs from Sun 26-Mar-2017 to Sat 28-Oct-2017 (217 days).

#### Disclaimer

The contents of this report may not be reproduced without the written consent of ACL.



# Air Transport Movement Allocation by Operator

Comparison between S16 End vs. S17 Start



Operator	FULL SEASON ALLOCATION							PEAK WEEK ALLOCATION								
	S16 ATMs	S17 ATMs	+/- change	S17 Rank	S16 Seats	S17 Seats	+/- change	S17 Rank	S16 ATMs	S17 ATMs	+/- change	S17 Rank	S16 Seats	S17 Seats	+/- change	S17 Rank
Ad Hoc Operator	157	66	-91	50	14,823	10,258	-4,565	44	9	6	-3	42	1,566	1,224	-342	33
Aegean Airlines	54	90	36	47	9,450	15,660	6,210	40	4	6	2	42	696	1,044	348	38
Aer Lingus	52,123	52,434	311	1	8,069,181	8,432,334	363,153	2	1,772	1,760	-12	1	272,387	283,026	10,639	2
Air Canada	561	660	99	20	158,170	186,120	27,950	15	24	28	4	16	6,768	7,896	1,128	13
Air Contractors	414	427	13	30	60,858	62,769	1,911	28	24	24	0	22	3,528	3,528	0	26
Air Europa	38	35	-3	53	7,294	6,510	-784	46	2	2	0	52	372	372	0	45
Air France	2,209	2,232	23	6	205,337	206,150	813	14	72	72	0	6	6,650	6,650	0	15
Air Moldova	156	218	62	41	24,660	31,884	7,224	35	6	8	2	37	900	1,136	236	36
Air Transat	158	189	31	43	46,410	56,547	10,137	30	6	8	2	37	1,866	2,364	498	28
Alitalia	16	-	-16	61	2,685	-	-2,685	54	2	-	-2	55	360	-	-360	48
American Airlines	1,552	1,532	-20	11	354,168	349,380	-4,788	5	56	56	0	9	13,300	12,838	-462	4
Arkia	20	16	-4	55	4,980	4,240	-740	47	-	-	0	55	-	-	0	48
Blue Air	451	586	135	23	76,670	107,866	31,196	22	18	20	2	23	3,060	3,666	606	23
Bluebird Cargo	311	310	-1	34	-	-	0	54	10	10	0	34	-	-	0	48
British Airways	5,055	5,034	-21	3	637,010	647,539	10,529	3	152	156	4	3	19,356	20,252	896	3
Bulgaria Air	22	-	-22	61	3,960	-	-3,960	54	-	-	0	55	-	-	0	48
Cityjet	2,558	2,966	408	5	244,232	283,039	38,807	8	80	120	40	4	7,675	11,508	3,833	6
Cobalt Air	34	116	82	45	6,140	16,704	10,564	39	4	4	0	47	720	576	-144	44
Danish Air Transport	9	9	0	56	624	612	-12	50	2	2	0	52	140	136	-4	47
Delta Airlines	852	1,160	308	13	242,566	281,472	38,906	9	28	42	14	13	8,204	9,884	1,680	9
Emirates	874	868	-6	14	313,598	341,992	28,394	6	28	28	0	16	9,996	11,032	1,036	7
Enter Air	17	-	-17	61	2,982	-	-2,982	54	-	-	0	55	-	-	0	48
Ethiopian Airlines	378	454	76	27	101,920	122,580	20,660	20	12	16	4	27	3,240	4,320	1,080	21
Etihad Airways	620	856	236	16	209,252	224,272	15,020	13	28	28	0	16	9,180	7,336	-1,844	14
Europe Airpost	71	51	-20	52	10,437	7,497	-2,940	45	4	4	0	47	588	588	0	43
European Air Transport (DHL)	367	370	3	32	-	-	0	54	12	12	0	33	-	-	0	48
Eurowings	22	246	224	39	2,160	39,060	36,900	33	-	8	8	37	-	1,260	1,260	32
Federal Express	303	310	7	34	-	-	0	54	10	10	0	34	-	-	0	48
Finnair	550	614	64	22	55,228	61,400	6,172	29	18	20	2	23	1,800	2,000	200	29
Fly One	50	100	50	46	9,300	17,400	8,100	38	4	4	0	47	744	696	-48	41
Flybe	2,630	2,970	340	4	215,404	273,900	58,496	10	86	96	10	5	7,036	8,848	1,812	11
Germanwings	466	250	-216	38	70,200	37,500	-32,700	34	16	8	-8	37	2,400	1,200	-1,200	34
Iberia	-	540	540	24	-	97,240	97,240	23	-	28	28	16	-	5,040	5,040	19
Iberia Express	508	2	-506	59	91,586	342	-91,244	51	26	-	-26	55	4,680	-	-4,680	48
KLM Royal Dutch Airlines	-	1,754	1,754	8	-	162,016	162,016	16	-	58	58	8	-	5,184	5,184	18
Loganair	4	722	718	18	168	30,724	30,556	37	2	28	26	16	68	1,140	1,072	35
Lufthansa	1,749	2,090	341	7	328,795	387,750	58,955	4	56	68	12	7	10,272	12,610	2,338	5
Luxair	413	478	65	25	35,790	41,388	5,598	32	14	14	0	29	1,284	1,284	0	31
Norwegian	496	1,205	709	12	91,506	225,357	133,851	12	16	50	34	12	2,892	9,372	6,480	10
Qatar Airways	-	278	278	37	-	70,670	70,670	26	-	14	14	29	-	3,556	3,556	25
Ryanair	47,650	47,160	-490	2	8,995,007	8,904,712	-90,295	1	1,589	1,564	-25	2	299,255	294,694	-4,561	1
SAS Scandinavian	1,334	1,570	236	10	216,264	262,200	45,936	11	42	54	12	11	6,208	8,448	2,240	12
Small Planet Airlines	14	-	-14	61	2,520	-	-2,520	54	-	-	0	55	-	-	0	48
Star Air	607	620	13	21	-	-	0	54	20	20	0	23	-	-	0	48
SunExpress	-	58	58	51	-	10,962	10,962	43	-	-	0	55	-	-	0	48
Swiss International	750	798	48	17	149,344	160,622	11,278	17	26	30	4	14	5,006	5,946	940	16
Thomson Airways	636	665	29	19	122,744	127,461	4,717	19	31	30	-1	14	6,264	5,892	-372	17
Titan Airways	3	9	6	56	710	1,774	1,064	49	-	2	2	52	-	360	360	46
TNT Airways	319	310	-9	34	-	-	0	54	10	10	0	34	-	-	0	48
Transavia	36	207	171	42	6,804	31,683	24,879	36	-	6	6	42	-	894	894	39
Transavia France	516	478	-38	25	97,482	90,342	-7,140	25	18	6	-12	42	3,402	1,134	-2,268	37
Travel Service	84	82	-2	48	15,876	15,498	-378	41	4	4	0	47	756	756	0	40
Turkish Airlines	868	868	0	14	135,136	139,748	4,612	18	28	28	0	16	4,228	4,508	280	20
United Airlines	1,334	1,634	300	9	225,569	316,136	90,567	7	56	56	0	9	9,464	10,864	1,400	8
Van Air Europe	-	-	0	61	-	-	0	54	-	-	0	55	-	-	0	48
Vueling	323	388	65	31	57,774	69,840	12,066	27	12	14	2	29	2,106	2,520	414	27
West Atlantic Cargo	64	-	-64	61	-	-	0	54	2	-	-2	55	-	-	0	48
Westjet	350	362	12	33	45,548	47,060	1,512	31	14	14	0	29	1,820	1,820	0	30
Woodgate Aviation	240	246	6	39	-	-	0	54	8	8	0	37	-	-	0	48
WOW Air	292	454	162	27	51,252	90,800	39,548	24	10	18	8	26	1,740	3,600	1,860	24
Zimex Aviation	124	149	25	44	-	-	0	54	5	5	0	46	-	-	0	48
<b>TOTAL</b>	<b>131,926</b>	<b>138,834</b>	<b>6,908</b>		<b>21,848,238</b>	<b>23,238,222</b>	<b>1,389,984</b>		<b>4,481</b>	<b>4,707</b>	<b>226</b>		<b>742,487</b>	<b>787,722</b>	<b>45,235</b>	

Operators with 0 'ATMs' in both S16 End & S17 Start schedules are included in the table due to appearing in the S16 Start schedule (either with/without allocated slots).

# Peak Week - Allocation and Slot Adjustment Distribution by Operator



Schedule: S17 Start

Operator	S17 allocated ATMs	SLOT ADJUSTMENTS (MINUTES OFF REQUESTED TIME)														Requests with NO slot allocated	
		0	5	10	15	20	25	30	35	40	45	50	55	60	>60		
Ad Hoc Operator	6	100.0%	0.0%	0.0%	0.0%	0.0%	0.0%	0.0%	0.0%	0.0%	0.0%	0.0%	0.0%	0.0%	0.0%	0.0%	-
Aegean Airlines	6	100.0%	0.0%	0.0%	0.0%	0.0%	0.0%	0.0%	0.0%	0.0%	0.0%	0.0%	0.0%	0.0%	0.0%	0.0%	-
Aer Lingus	1,760	97.6%	0.9%	0.5%	0.1%	0.2%	0.3%	0.1%	0.0%	0.1%	0.0%	0.1%	0.1%	0.0%	0.1%	-	
Air Canada	28	100.0%	0.0%	0.0%	0.0%	0.0%	0.0%	0.0%	0.0%	0.0%	0.0%	0.0%	0.0%	0.0%	0.0%	-	
Air Contractors	24	91.7%	0.0%	8.3%	0.0%	0.0%	0.0%	0.0%	0.0%	0.0%	0.0%	0.0%	0.0%	0.0%	0.0%	-	
Air Europa	2	100.0%	0.0%	0.0%	0.0%	0.0%	0.0%	0.0%	0.0%	0.0%	0.0%	0.0%	0.0%	0.0%	0.0%	-	
Air France	72	100.0%	0.0%	0.0%	0.0%	0.0%	0.0%	0.0%	0.0%	0.0%	0.0%	0.0%	0.0%	0.0%	0.0%	-	
Air Moldova	8	100.0%	0.0%	0.0%	0.0%	0.0%	0.0%	0.0%	0.0%	0.0%	0.0%	0.0%	0.0%	0.0%	0.0%	-	
Air Transat	8	75.0%	25.0%	0.0%	0.0%	0.0%	0.0%	0.0%	0.0%	0.0%	0.0%	0.0%	0.0%	0.0%	0.0%	-	
American Airlines	56	87.5%	0.0%	12.5%	0.0%	0.0%	0.0%	0.0%	0.0%	0.0%	0.0%	0.0%	0.0%	0.0%	0.0%	-	
Blue Air	20	100.0%	0.0%	0.0%	0.0%	0.0%	0.0%	0.0%	0.0%	0.0%	0.0%	0.0%	0.0%	0.0%	0.0%	-	
Bluebird Cargo	10	100.0%	0.0%	0.0%	0.0%	0.0%	0.0%	0.0%	0.0%	0.0%	0.0%	0.0%	0.0%	0.0%	0.0%	-	
British Airways	156	100.0%	0.0%	0.0%	0.0%	0.0%	0.0%	0.0%	0.0%	0.0%	0.0%	0.0%	0.0%	0.0%	0.0%	-	
Cobalt Air	4	100.0%	0.0%	0.0%	0.0%	0.0%	0.0%	0.0%	0.0%	0.0%	0.0%	0.0%	0.0%	0.0%	0.0%	-	
Danish Air Transport	2	100.0%	0.0%	0.0%	0.0%	0.0%	0.0%	0.0%	0.0%	0.0%	0.0%	0.0%	0.0%	0.0%	0.0%	-	
Delta Airlines	42	100.0%	0.0%	0.0%	0.0%	0.0%	0.0%	0.0%	0.0%	0.0%	0.0%	0.0%	0.0%	0.0%	0.0%	-	
Emirates	28	100.0%	0.0%	0.0%	0.0%	0.0%	0.0%	0.0%	0.0%	0.0%	0.0%	0.0%	0.0%	0.0%	0.0%	-	
Etiyah Airways	28	100.0%	0.0%	0.0%	0.0%	0.0%	0.0%	0.0%	0.0%	0.0%	0.0%	0.0%	0.0%	0.0%	0.0%	-	
Europe Airpost	4	100.0%	0.0%	0.0%	0.0%	0.0%	0.0%	0.0%	0.0%	0.0%	0.0%	0.0%	0.0%	0.0%	0.0%	-	
European Air Transport (DHL)	12	100.0%	0.0%	0.0%	0.0%	0.0%	0.0%	0.0%	0.0%	0.0%	0.0%	0.0%	0.0%	0.0%	0.0%	-	
Eurowings	8	100.0%	0.0%	0.0%	0.0%	0.0%	0.0%	0.0%	0.0%	0.0%	0.0%	0.0%	0.0%	0.0%	0.0%	-	
Federal Express	10	100.0%	0.0%	0.0%	0.0%	0.0%	0.0%	0.0%	0.0%	0.0%	0.0%	0.0%	0.0%	0.0%	0.0%	-	
Finnair	20	95.0%	0.0%	0.0%	0.0%	0.0%	0.0%	0.0%	5.0%	0.0%	0.0%	0.0%	0.0%	0.0%	0.0%	-	
Fly One	4	100.0%	0.0%	0.0%	0.0%	0.0%	0.0%	0.0%	0.0%	0.0%	0.0%	0.0%	0.0%	0.0%	0.0%	-	
Flybe	96	77.1%	6.3%	0.0%	0.0%	4.2%	1.0%	0.0%	0.0%	5.2%	0.0%	5.2%	1.0%	0.0%	-		
Germanwings	8	100.0%	0.0%	0.0%	0.0%	0.0%	0.0%	0.0%	0.0%	0.0%	0.0%	0.0%	0.0%	0.0%	0.0%	-	
Hainan Airlines	16	75.0%	0.0%	25.0%	0.0%	0.0%	0.0%	0.0%	0.0%	0.0%	0.0%	0.0%	0.0%	0.0%	0.0%	-	
Loganair	28	50.0%	0.0%	0.0%	0.0%	0.0%	0.0%	0.0%	0.0%	0.0%	0.0%	0.0%	7.1%	42.9%	-		
Lufthansa	68	98.5%	1.5%	0.0%	0.0%	0.0%	0.0%	0.0%	0.0%	0.0%	0.0%	0.0%	0.0%	0.0%	-		
Norwegian	50	100.0%	0.0%	0.0%	0.0%	0.0%	0.0%	0.0%	0.0%	0.0%	0.0%	0.0%	0.0%	0.0%	-		
Qatar Airways	14	100.0%	0.0%	0.0%	0.0%	0.0%	0.0%	0.0%	0.0%	0.0%	0.0%	0.0%	0.0%	0.0%	-		
Ryanair	1,564	97.7%	0.8%	0.5%	0.3%	0.0%	0.4%	0.1%	0.0%	0.1%	0.0%	0.1%	0.0%	0.1%	-		
SAS Scandinavian	54	100.0%	0.0%	0.0%	0.0%	0.0%	0.0%	0.0%	0.0%	0.0%	0.0%	0.0%	0.0%	0.0%	-		
Swiss International	30	100.0%	0.0%	0.0%	0.0%	0.0%	0.0%	0.0%	0.0%	0.0%	0.0%	0.0%	0.0%	0.0%	-		
Thomson Airways	30	96.7%	0.0%	0.0%	3.3%	0.0%	0.0%	0.0%	0.0%	0.0%	0.0%	0.0%	0.0%	0.0%	-		
Titan Airways	2	100.0%	0.0%	0.0%	0.0%	0.0%	0.0%	0.0%	0.0%	0.0%	0.0%	0.0%	0.0%	0.0%	-		
TNT Airways	10	100.0%	0.0%	0.0%	0.0%	0.0%	0.0%	0.0%	0.0%	0.0%	0.0%	0.0%	0.0%	0.0%	-		
Transavia	6	100.0%	0.0%	0.0%	0.0%	0.0%	0.0%	0.0%	0.0%	0.0%	0.0%	0.0%	0.0%	0.0%	-		
Transavia France	6	100.0%	0.0%	0.0%	0.0%	0.0%	0.0%	0.0%	0.0%	0.0%	0.0%	0.0%	0.0%	0.0%	-		
Travel Service	4	100.0%	0.0%	0.0%	0.0%	0.0%	0.0%	0.0%	0.0%	0.0%	0.0%	0.0%	0.0%	0.0%	-		
Turkish Airlines	28	100.0%	0.0%	0.0%	0.0%	0.0%	0.0%	0.0%	0.0%	0.0%	0.0%	0.0%	0.0%	0.0%	-		
United Airlines	56	100.0%	0.0%	0.0%	0.0%	0.0%	0.0%	0.0%	0.0%	0.0%	0.0%	0.0%	0.0%	0.0%	-		
Vueling	14	100.0%	0.0%	0.0%	0.0%	0.0%	0.0%	0.0%	0.0%	0.0%	0.0%	0.0%	0.0%	0.0%	-		
Westjet	14	100.0%	0.0%	0.0%	0.0%	0.0%	0.0%	0.0%	0.0%	0.0%	0.0%	0.0%	0.0%	0.0%	-		
Woodgate Aviation	8	100.0%	0.0%	0.0%	0.0%	0.0%	0.0%	0.0%	0.0%	0.0%	0.0%	0.0%	0.0%	0.0%	-		
WOW Air	18	88.9%	5.6%	5.6%	0.0%	0.0%	0.0%	0.0%	0.0%	0.0%	0.0%	0.0%	0.0%	0.0%	-		
Zimex Aviation	5	100.0%	0.0%	0.0%	0.0%	0.0%	0.0%	0.0%	0.0%	0.0%	0.0%	0.0%	0.0%	0.0%	-		
<b>TOTAL</b>	<b>4,707</b>	<b>96.1%</b>	<b>1.4%</b>	<b>0.8%</b>	<b>0.3%</b>	<b>0.2%</b>	<b>0.3%</b>	<b>0.1%</b>	<b>0.1%</b>	<b>0.1%</b>	<b>0.0%</b>	<b>0.0%</b>	<b>0.1%</b>	<b>0.1%</b>	<b>0.3%</b>	-	

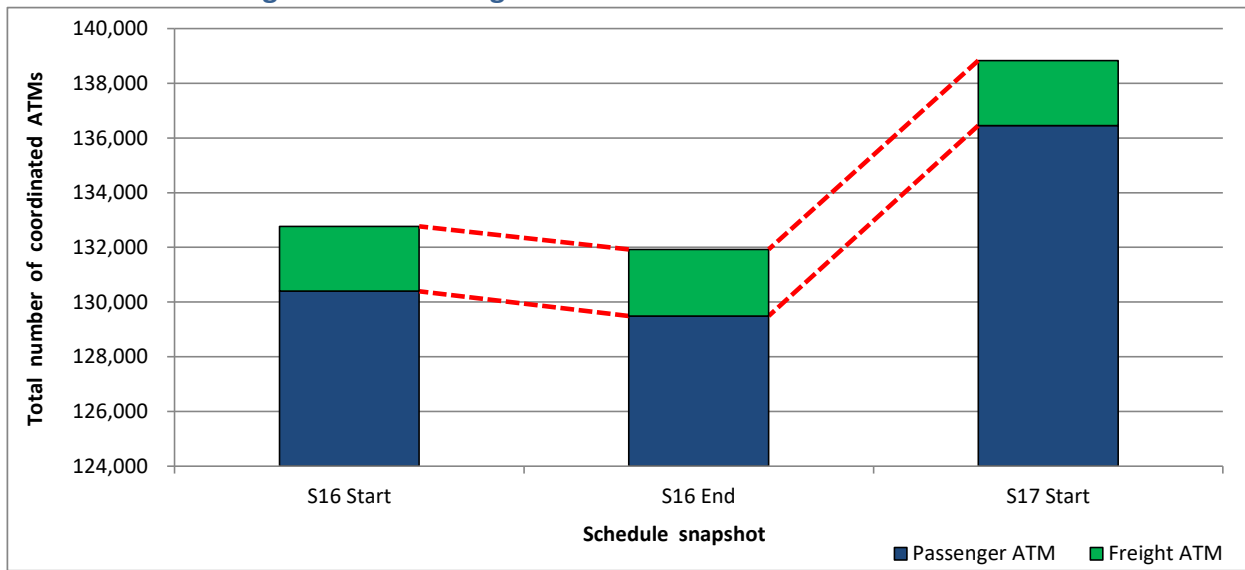
Operators with 0 'allocated ATMs' and 0 'Requests with NO slot allocated' in S17, are included in this list due to having slots allocated in either S16 Start or S16 End schedules.

## Significant Route Changes



Operator	Category	Description of change from S16 schedule to S17 schedule
Aer Lingus	<b>NEW</b>	Service to Miami
Aer Lingus	CHANGE	Decreased services to Amsterdam & New York JFK
Aer Lingus	CHANGE	Increased services to Lanzarote, Malaga, Hartford USA, Bourgas, Newark, Washington, Los Angeles, London Heathrow, Lisbon, Orlando, Chicago O'Hare & Split
Air Arabia Maroc	<b>NEW</b>	Service to Agadir
Air Canada	CHANGE	Increased service to Toronto Pearson International
Air Contractors	<b>NEW</b>	Services to Agadir, Belgrade & Palma Mallorca
Air Contractors	<b>CANCELLED</b>	Service to Dalaman
Air Moldova	CHANGE	Increased service to Chisinau
Air Transat	CHANGE	Increased service to Montreal
Blue Air	CHANGE	Increased service to Cluj-Napoca Romania
British Airways	CHANGE	Decreased service to London Heathrow
Cityjet	<b>NEW</b>	Service to Reus
Cityjet	CHANGE	Increased service to London City
Cobalt Air	CHANGE	Increased service to Larnaca
Delta Airlines	<b>NEW</b>	Service to Boston
Etihad Airways	CHANGE	Increased service to Abu Dhabi
Finnair	CHANGE	Increased service to Helsinki
Flybe	<b>NEW</b>	Service to Doncaster
Flybe	CHANGE	Increased service to Cardiff Wales & Southampton
Flybe	<b>CANCELLED</b>	Service to Inverness
Hainan Airlines	<b>NEW</b>	Service to Beijing
KLM Royal Dutch Airlines	<b>NEW</b>	Service to Amsterdam-Schiphol
Loganair	<b>NEW</b>	Services to Dundee & Inverness
Lufthansa	CHANGE	Increased service to Munich
Luxair	CHANGE	Increased service to Luxembourg
Norwegian	<b>NEW</b>	Services to Stockholm, Providence USA & Stewart USA
Norwegian	CHANGE	Increased service to Oslo
Qatar Airways	<b>NEW</b>	Service to Doha
Ryanair	<b>NEW</b>	Services to Hamburg, Oslo, Sofia Vrazhdebna & Marrakech Menara
Ryanair	CHANGE	Decreased services to Bristol, Paris Beauvais, Bydgoszcz, Charleroi Brussels, Edinburgh, Nottingham East Midlands, Glasgow, Liverpool, Manchester, Vilnius & London Stansted
Ryanair	CHANGE	Increased services to Brussels, Rome Ciampino, Faro, Kaunas, Lisbon, Newcastle, Porto & Tenerife
Ryanair	<b>CANCELLED</b>	Service to Rome Fiumicino, Leeds Bradford, Lodz Lublinek & Almeria
SAS Scandinavian	CHANGE	Increased services to Stockholm, Copenhagen & Oslo
SunExpress	<b>NEW</b>	Service to Izmir
Transavia	<b>NEW</b>	Service to Munich
United Airlines	CHANGE	Increased services to Newark, Washington & Chicago O'Hare
Vueling	CHANGE	Increased service to Barcelona
WOW Air	CHANGE	Increased service to Keflavik

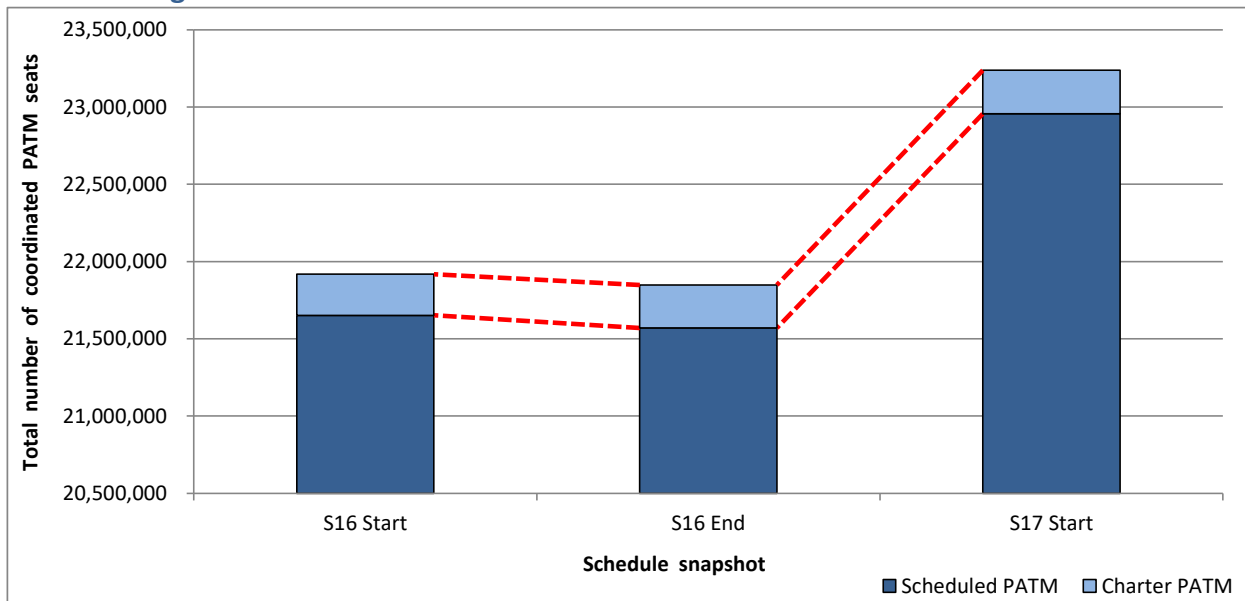
## Total ATMs: Passenger ATMs vs. Freight ATMs



# Full Season - PATM Seats Analysis



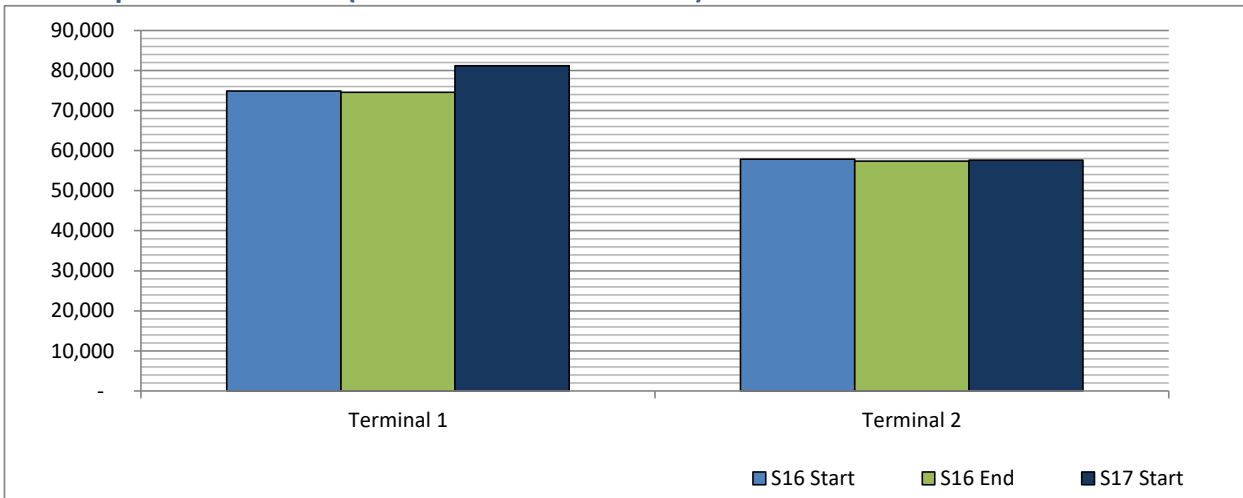
Total Passenger ATM seats: Scheduled vs. Charter



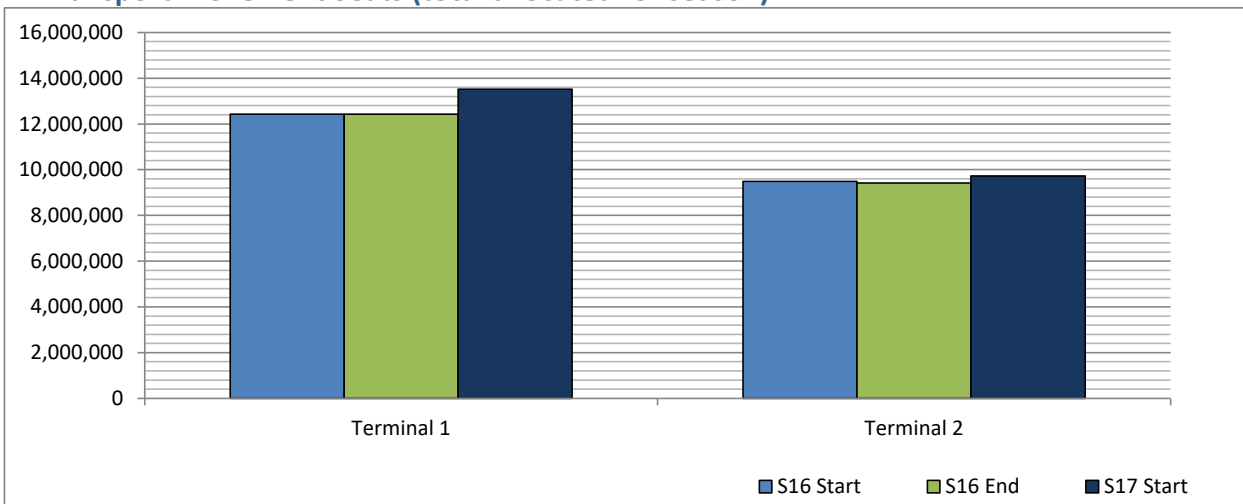
# Full Season - Terminal Analysis



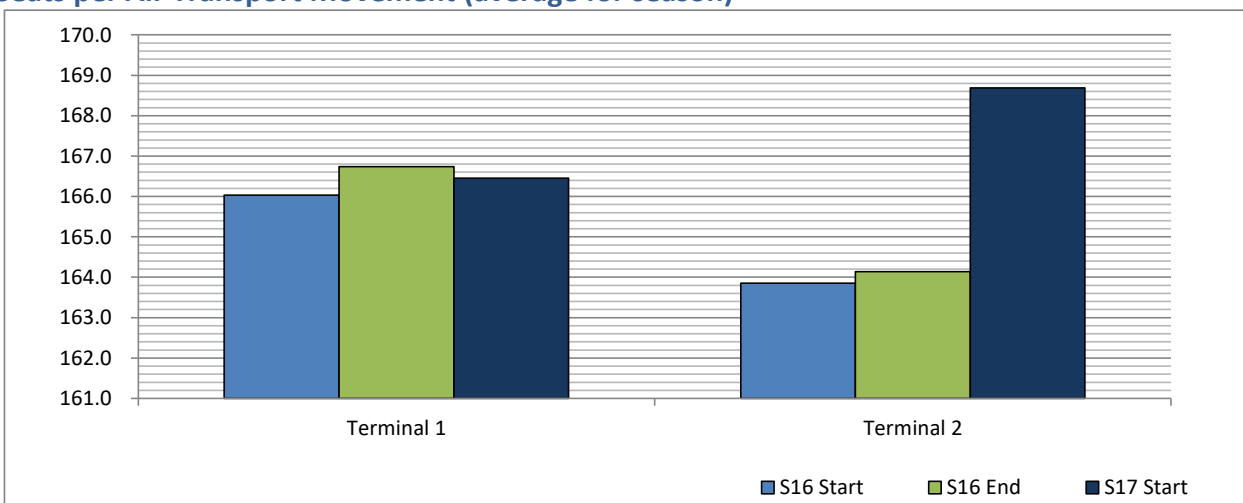
**Air Transport Movements (total allocated for season)**



**Air Transport Movement Seats (total allocated for season)**

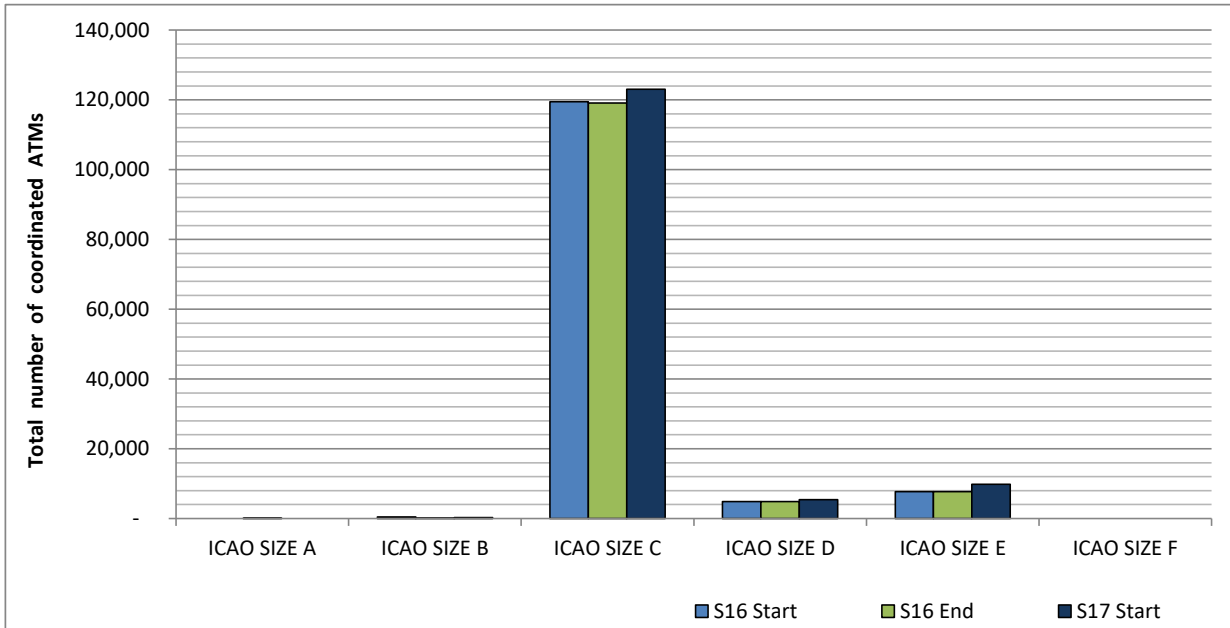


**Seats per Air Transport Movement (average for season)**



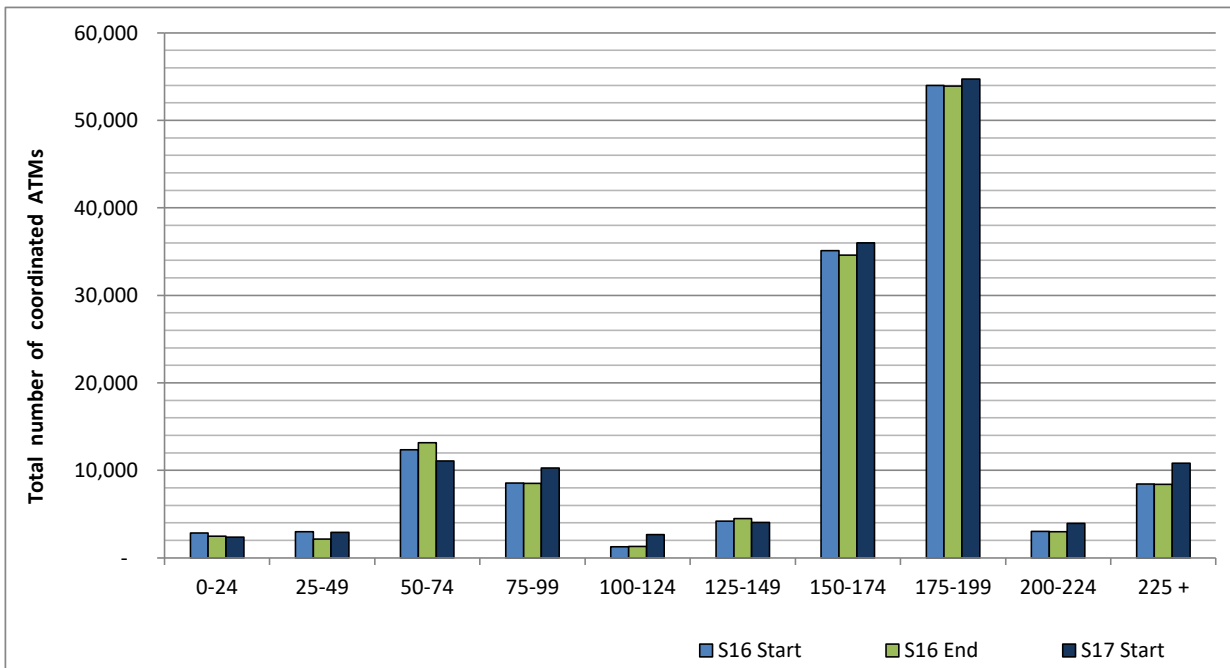


## ICAO size designation



Note: See Glossary for definitions of ICAO SIZE groupings

## Air Transport Movement seat distribution

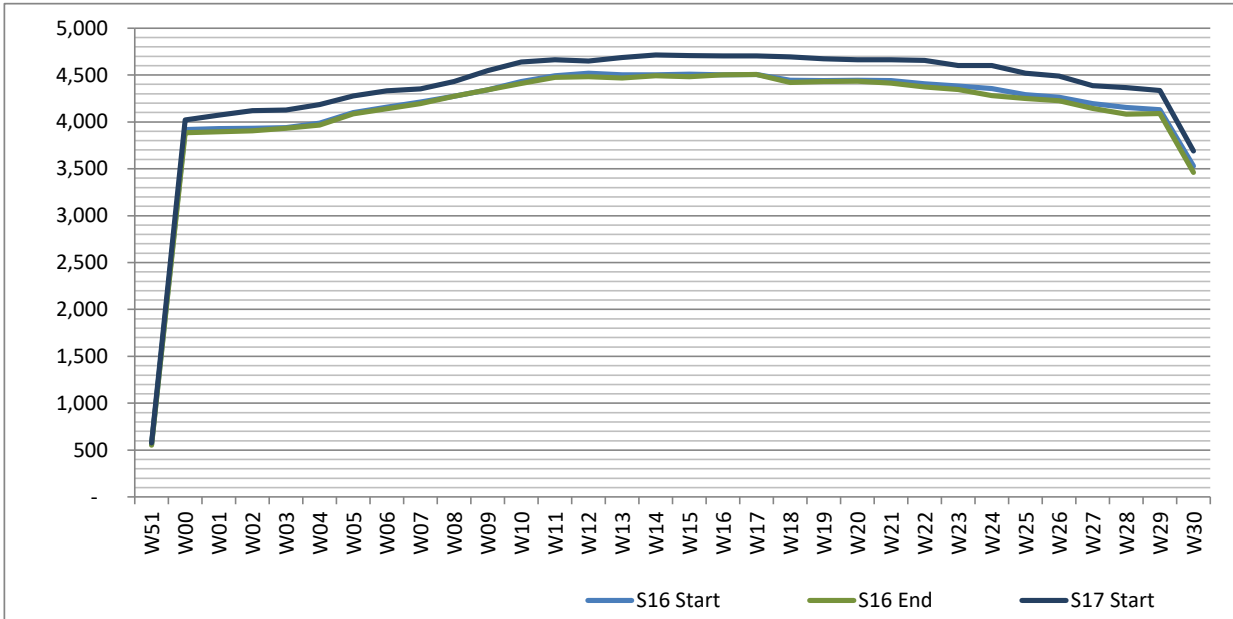


Note: FREIGHT-ONLY services with 0 seats are included in the first seat band '0-24'

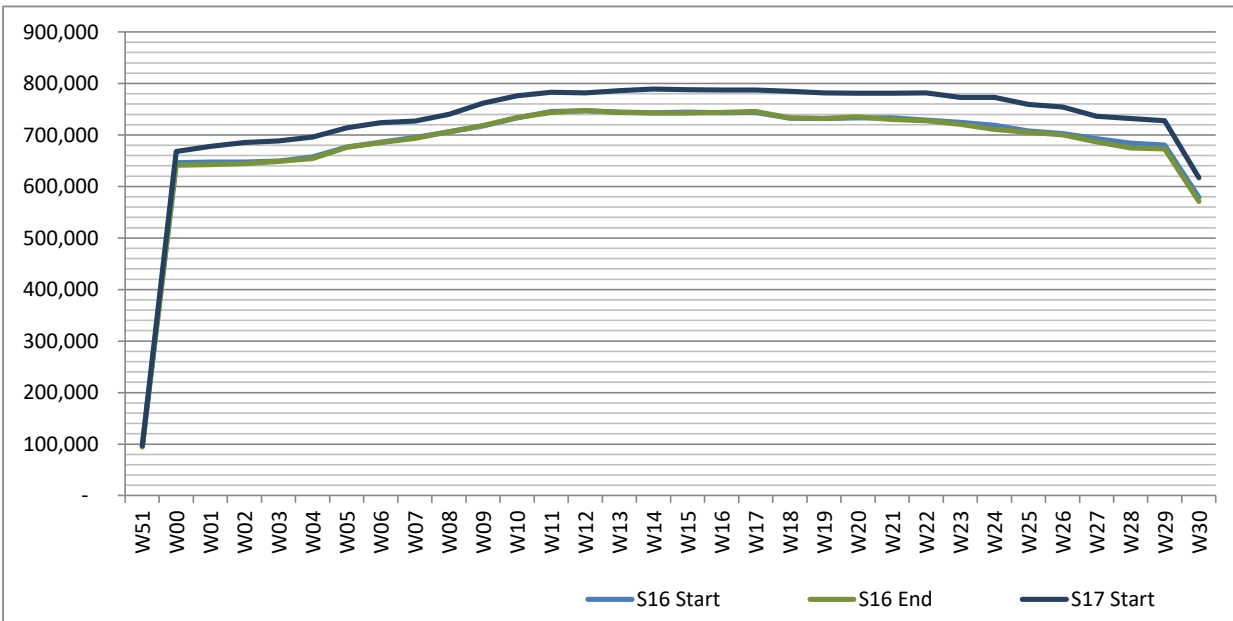
# Full Season - Seasonality



**Air Transport Movements by week of season**



**Air Transport Movement Seats by week of season**



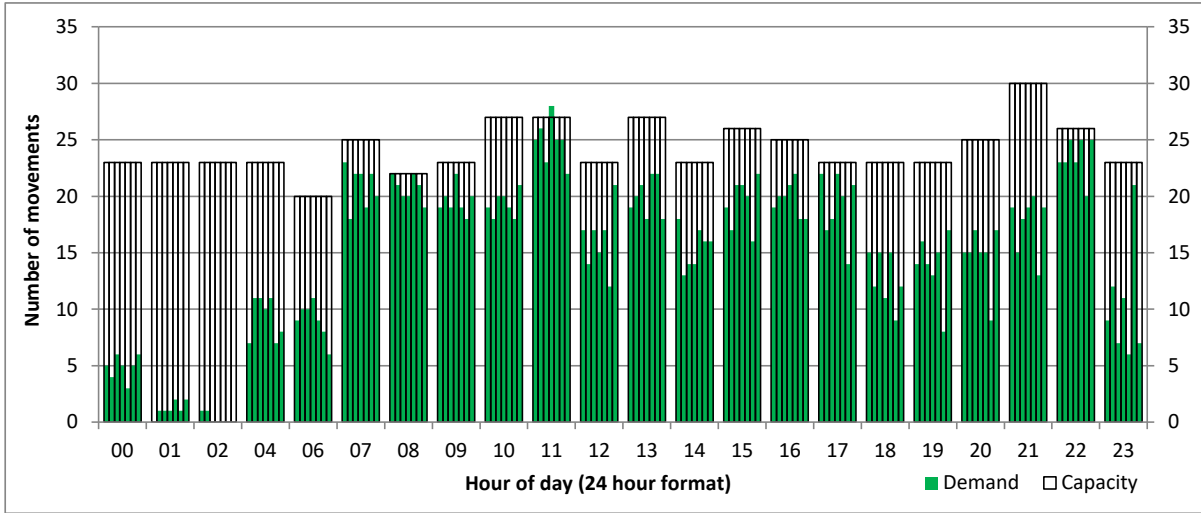
# Peak Week - Hourly Runway Demand

Schedule: S17 Start



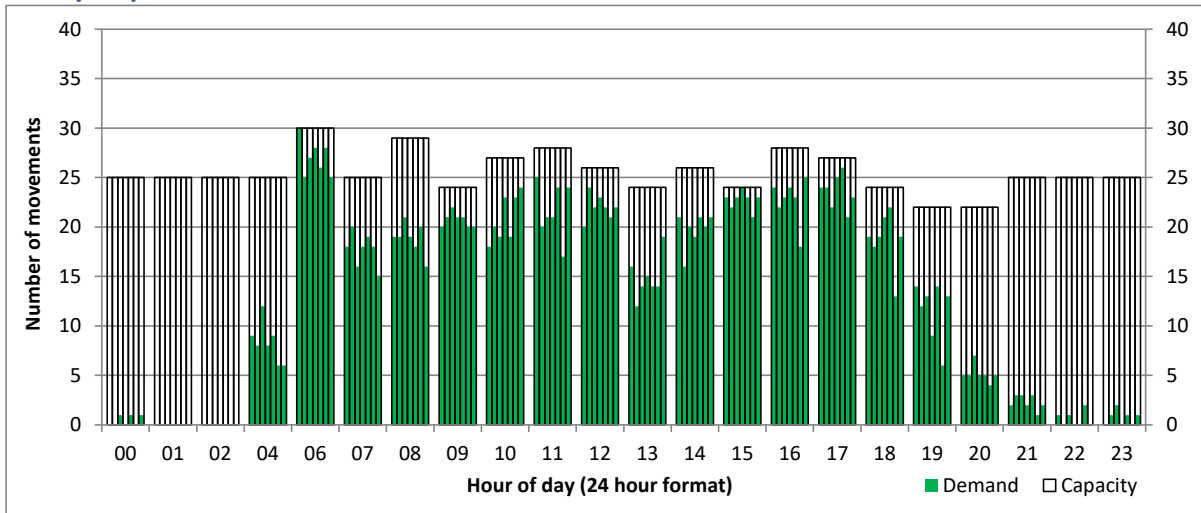
## Hourly Arrival Demand

Time: UTC



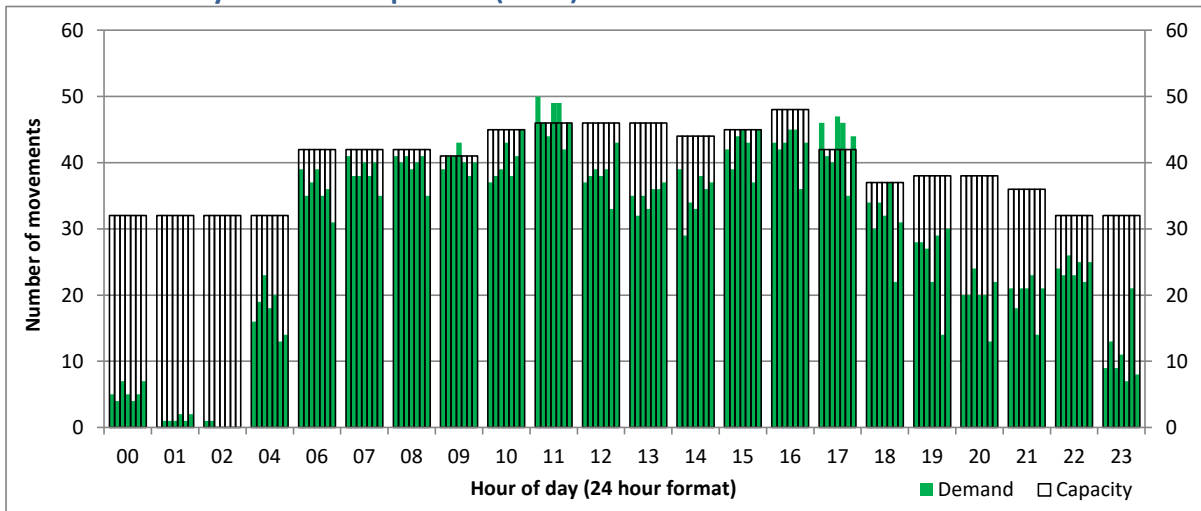
## Hourly Departure Demand

Time: UTC



## Combined Hourly Arrival & Departure (Total) Demand

Time: UTC



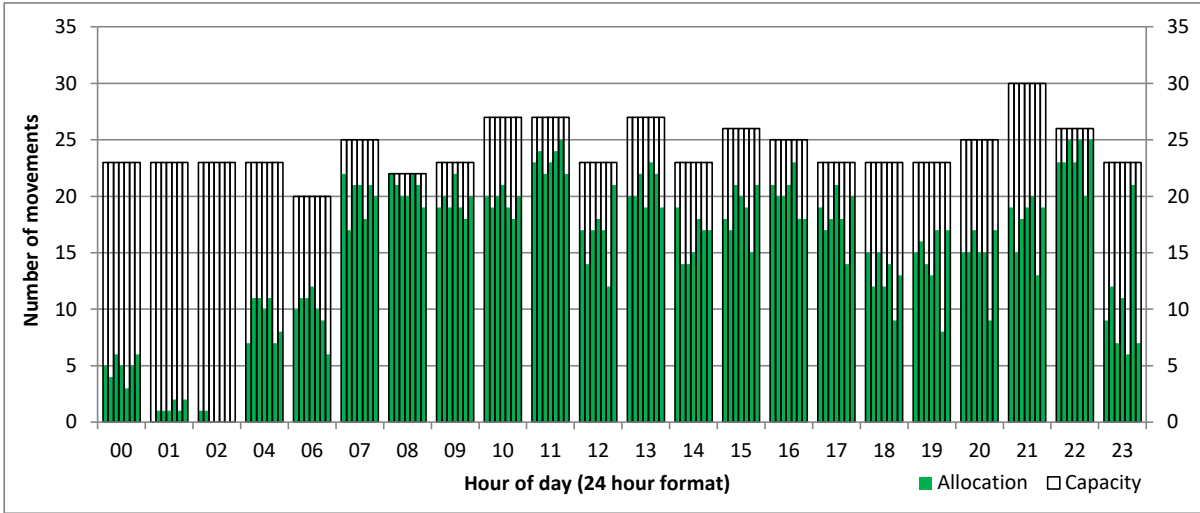
# Peak Week - Hourly Runway Allocation

Schedule: S17 Start



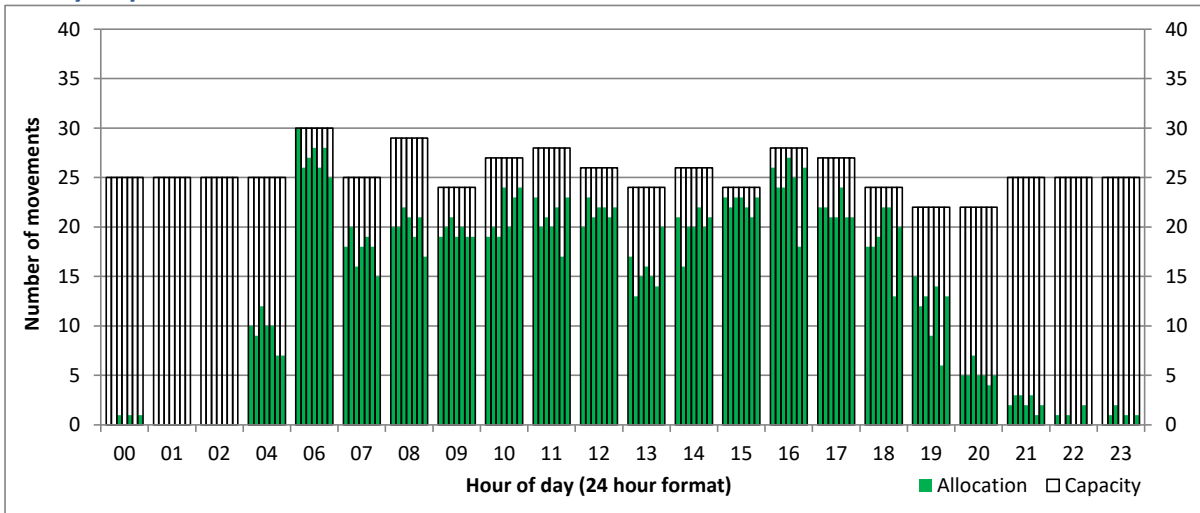
## Hourly Arrival Allocation

Time: UTC



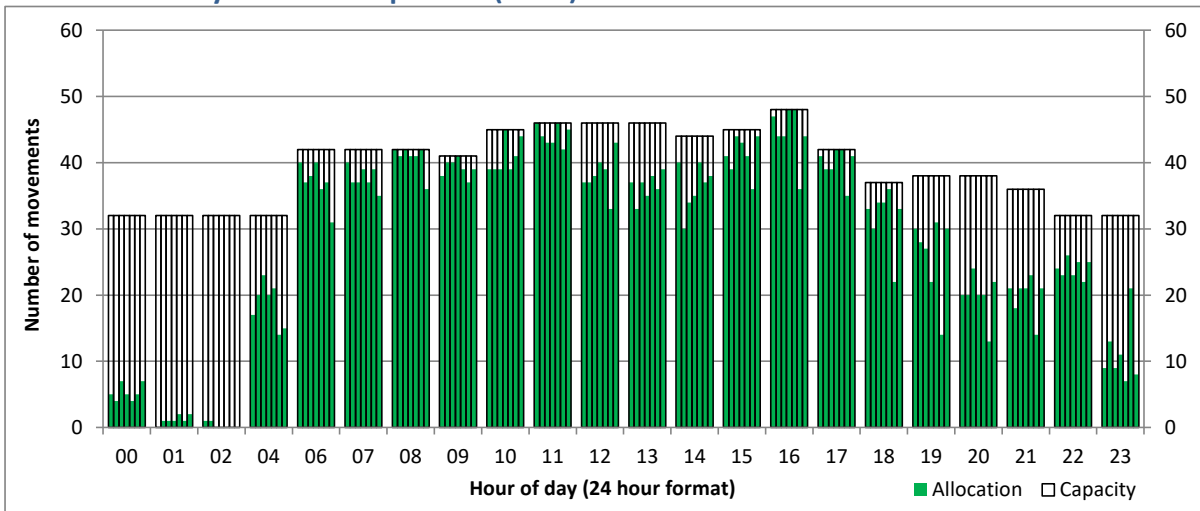
## Hourly Departure Allocation

Time: UTC



## Combined Hourly Arrival & Departure (Total) Allocation

Time: UTC



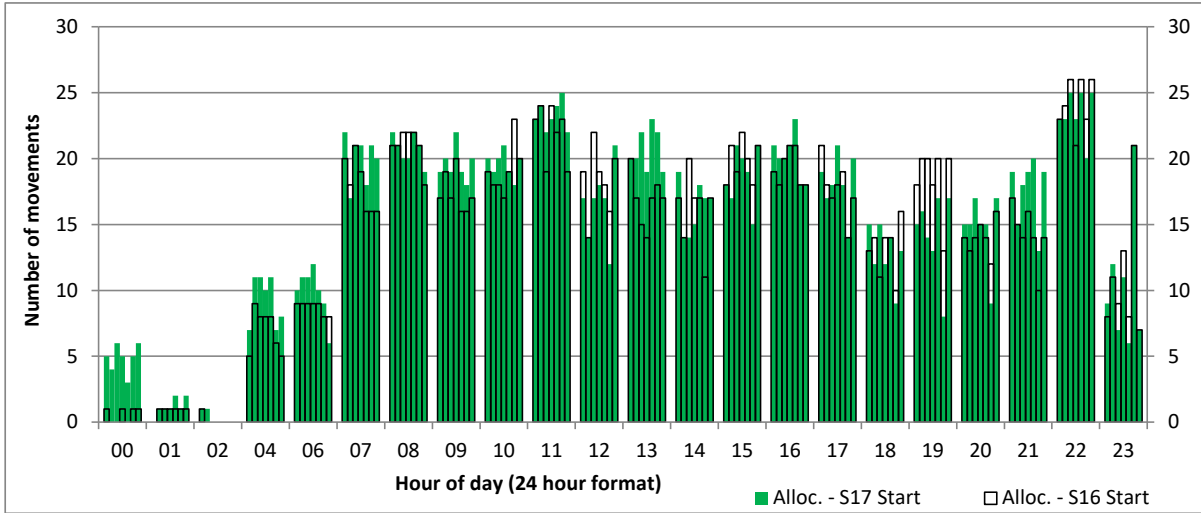
# Peak Week - Runway Allocation Comparison



Comparison of S17 Start vs. S16 Start

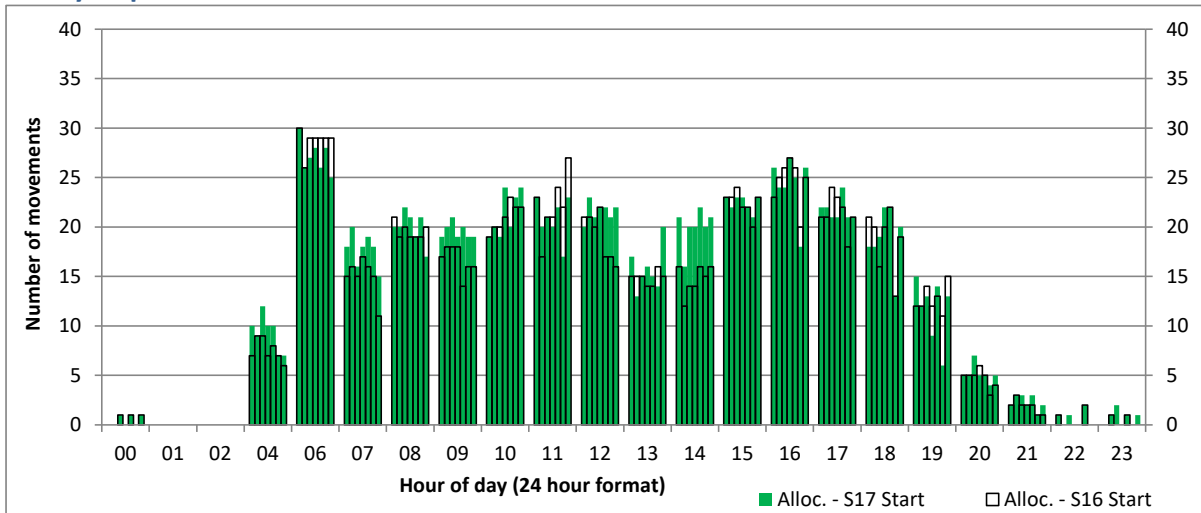
## Hourly Arrival Allocation

Time: UTC



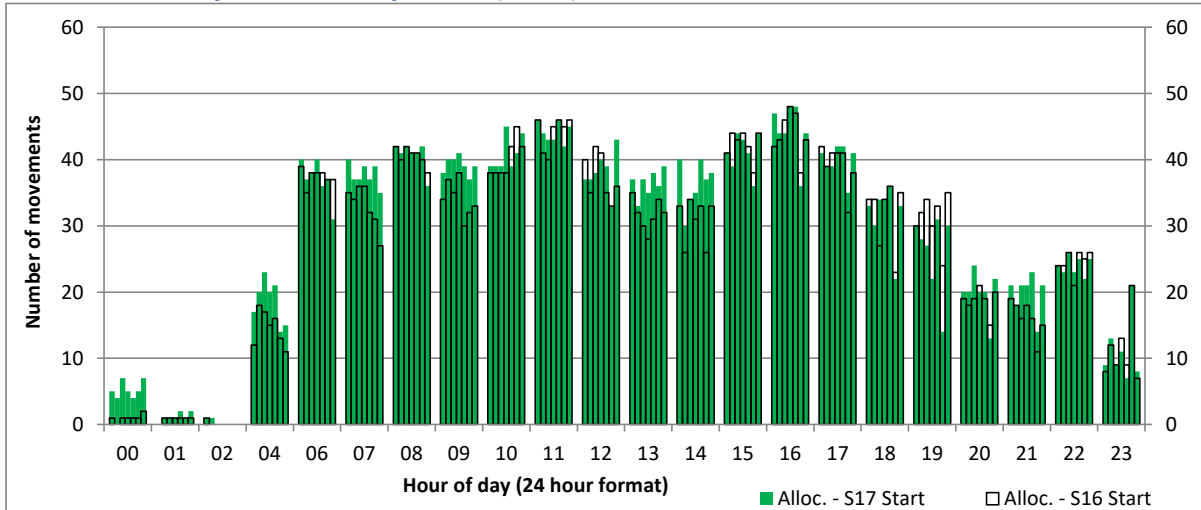
## Hourly Departure Allocation

Time: UTC



## Combined Hourly Arrival & Departure (Total) Allocation

Time: UTC



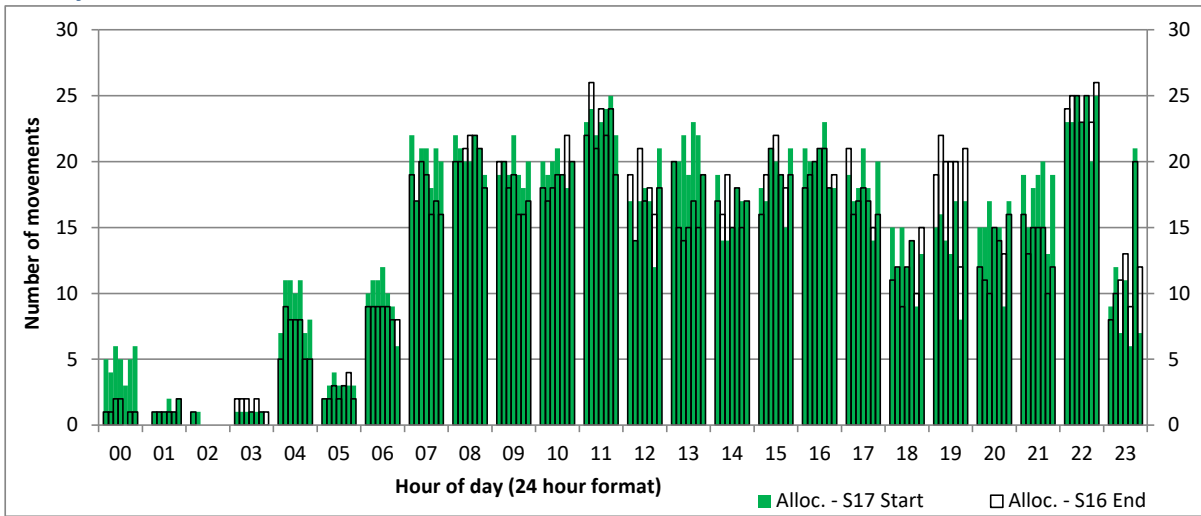
# Peak Week - Runway Allocation Comparison



Comparison of S17 Start vs. S16 End

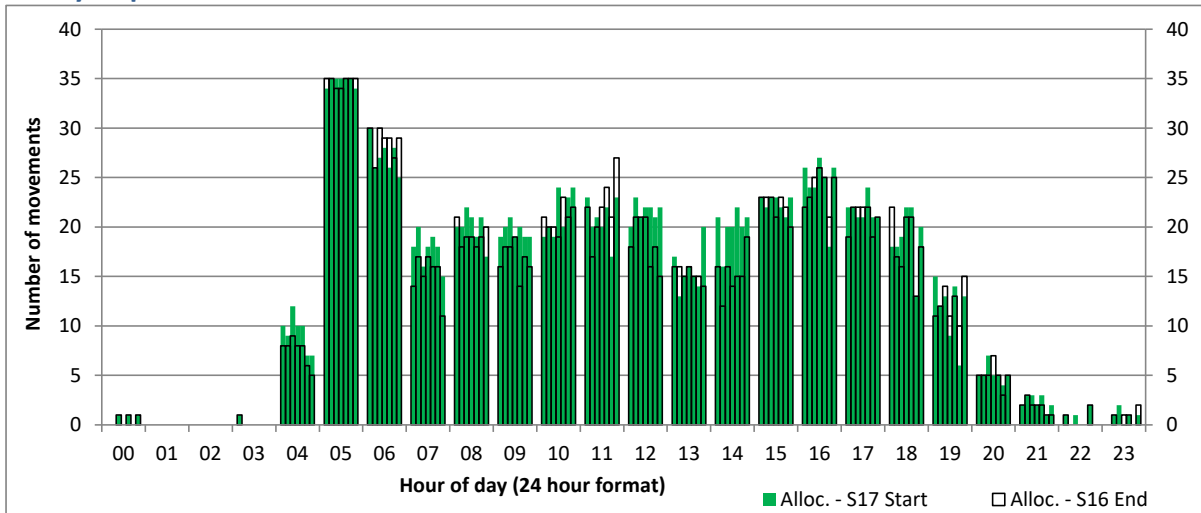
## Hourly Arrival Allocation

Time: UTC



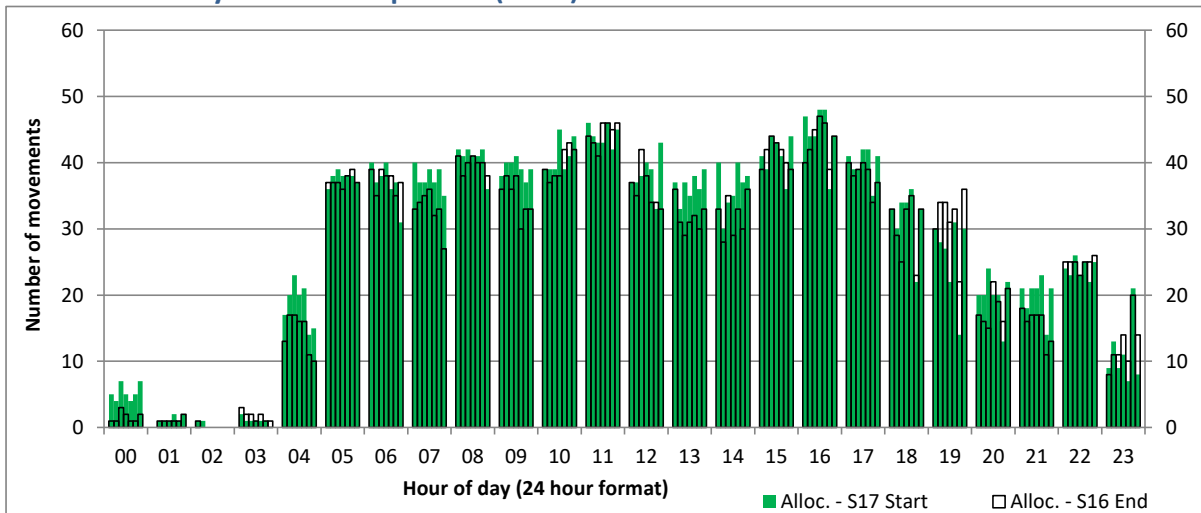
## Hourly Departure Allocation

Time: UTC



## Combined Hourly Arrival & Departure (Total) Allocation

Time: UTC



# Peak Week - Passengers Histogram

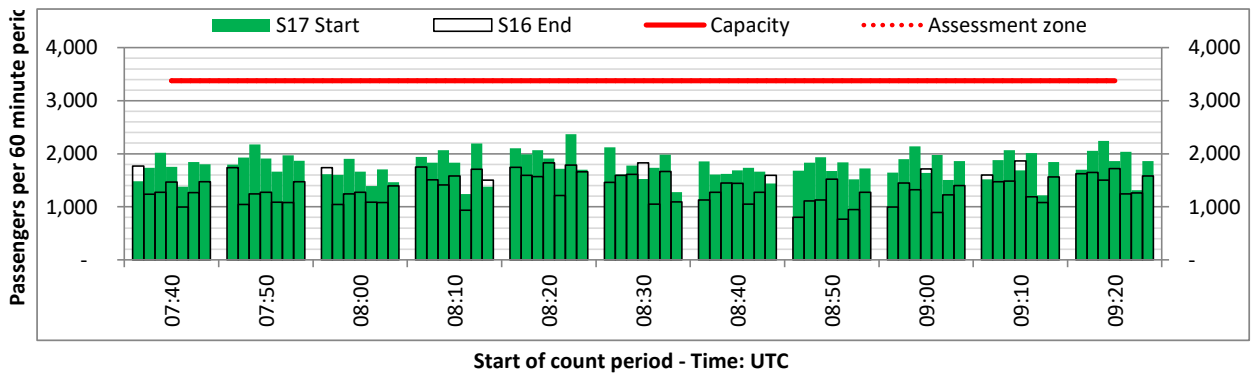
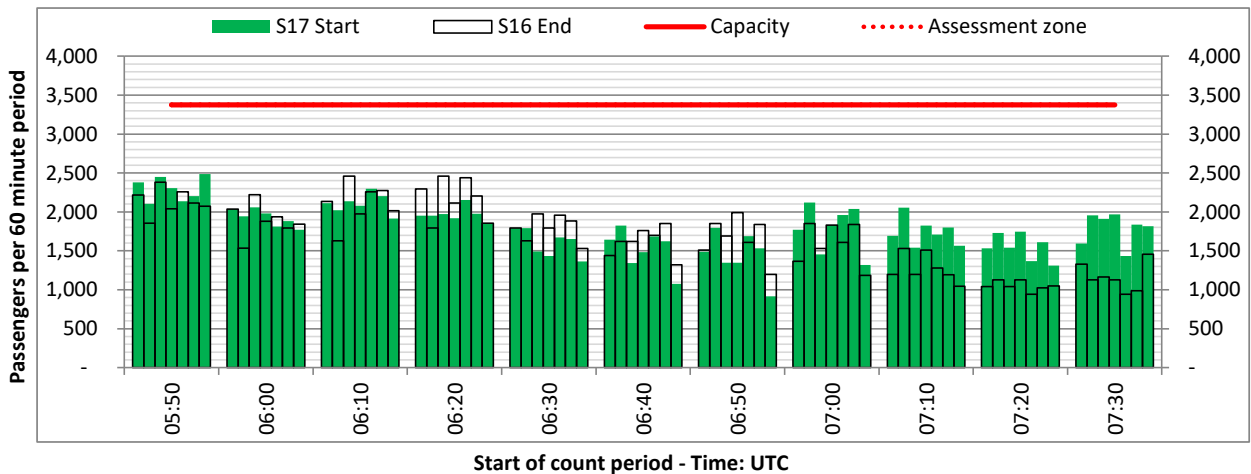
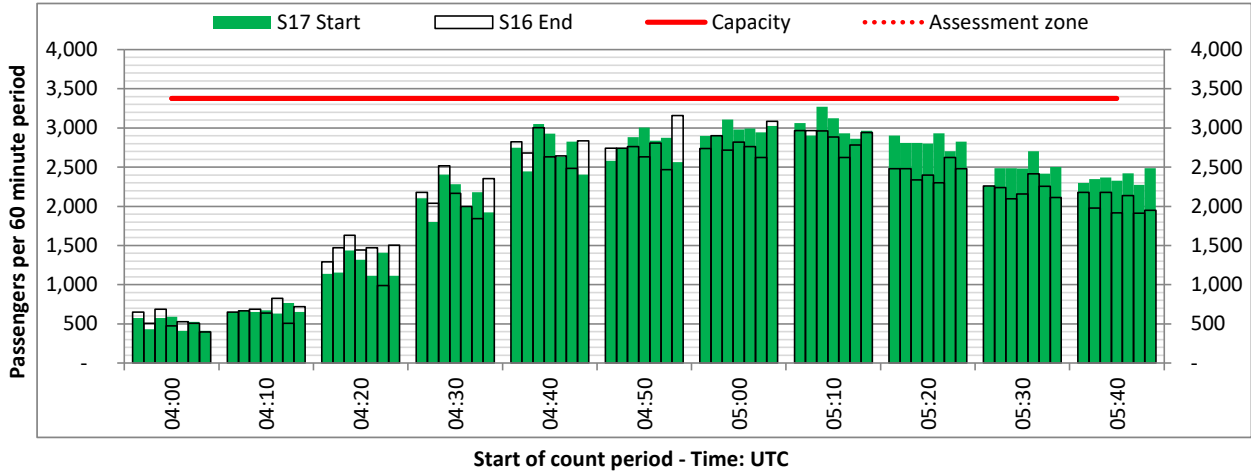
DEPARTURE - 60 minute count rolling every 10 mins (T60/10)



Terminals: 1

Operators: All Operators

Days: 1234567



# Peak Week - Passengers Histogram

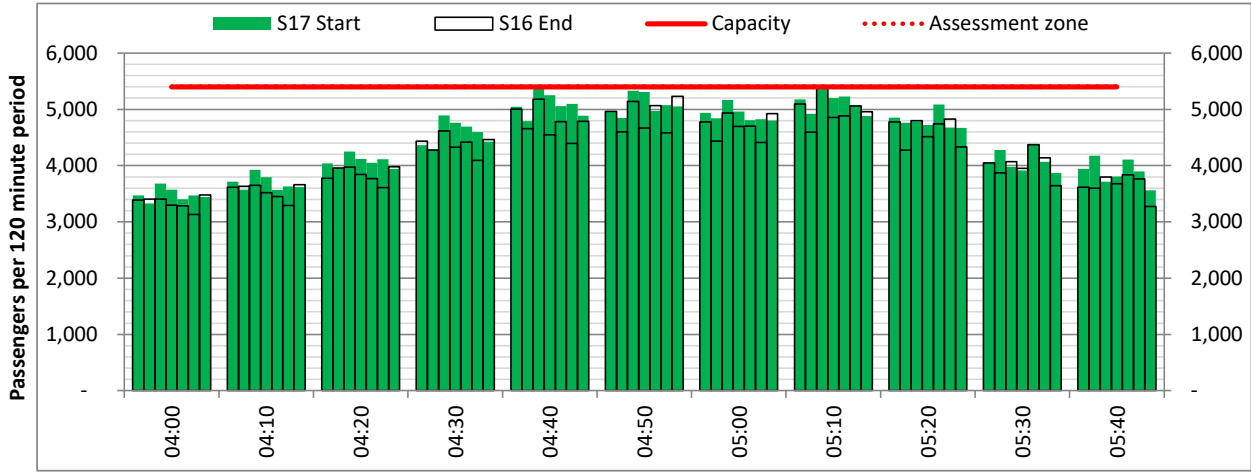
DEPARTURE - 120 minute count rolling every 10 mins (T120/10)



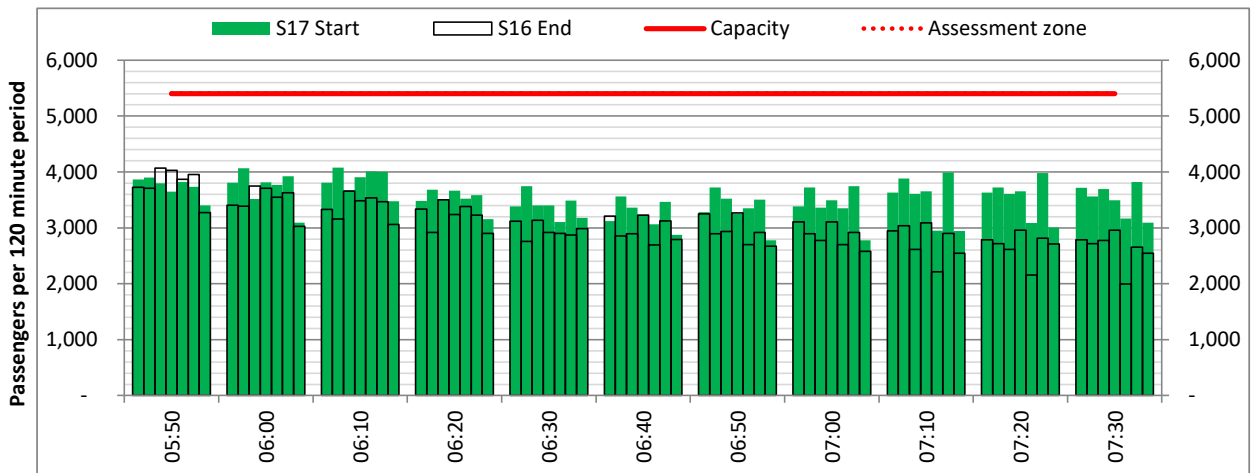
Terminals: 1

Operators: All Operators

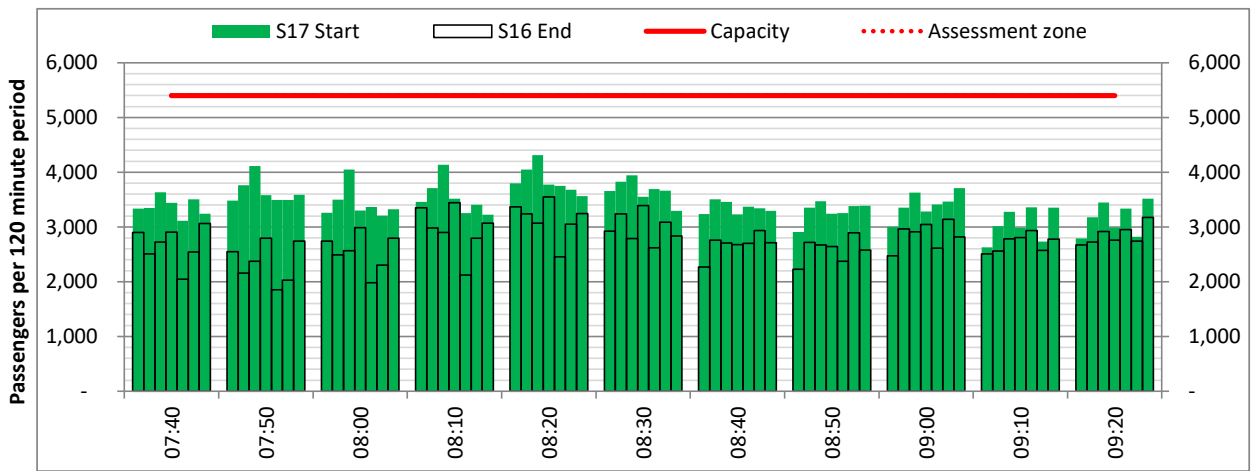
Days: 1234567



Start of count period - Time: UTC



Start of count period - Time: UTC



Start of count period - Time: UTC



# Peak Week - Passengers Histogram

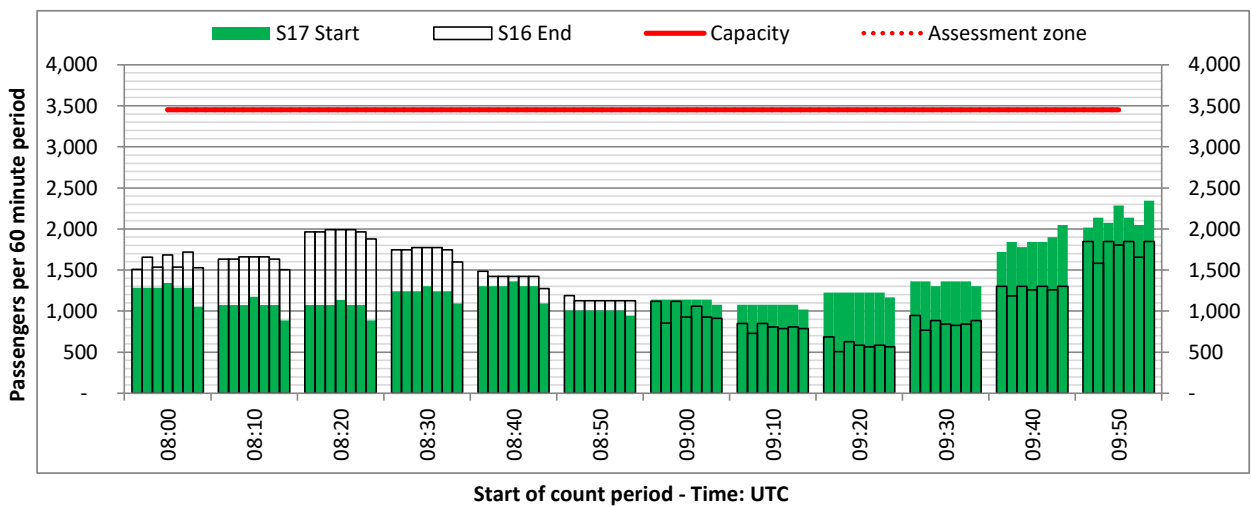
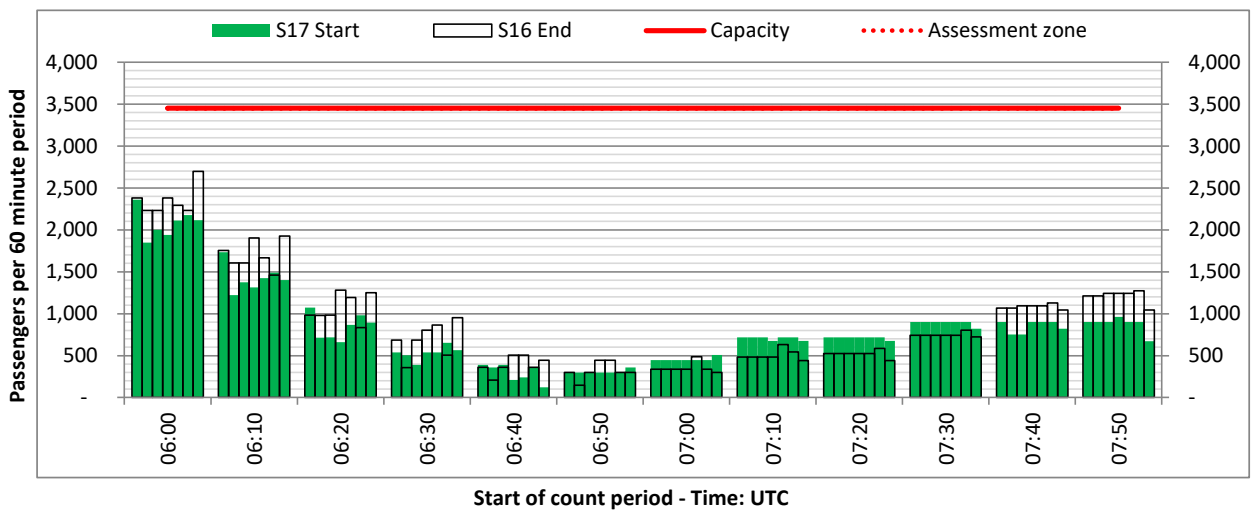
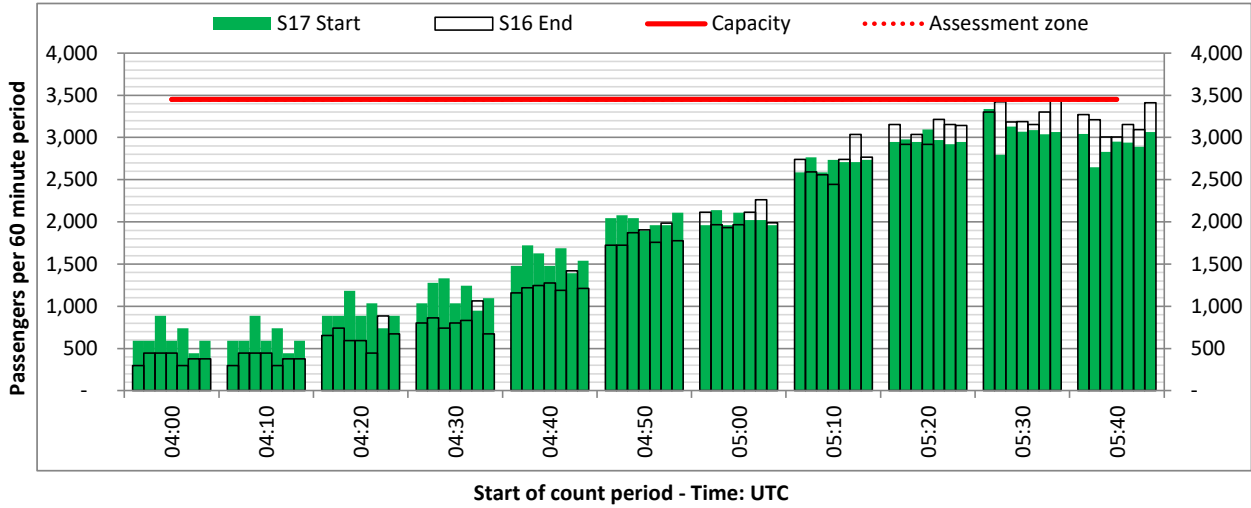
DEPARTURE - 60 minute count rolling every 10 mins (T60/10)



Terminals: 2

Operators: All Operators

Days: 1234567



# Peak Week - Passengers Histogram

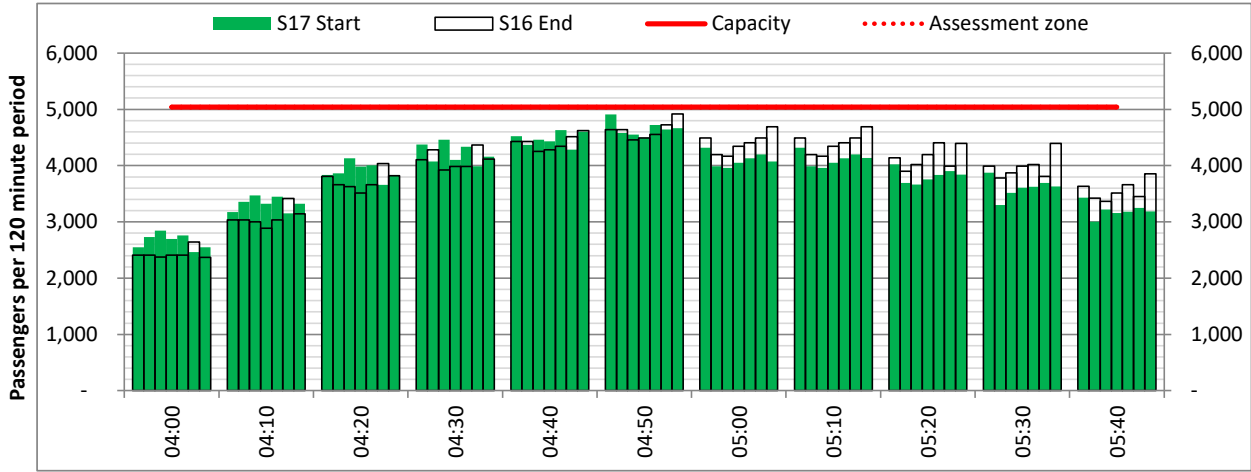
DEPARTURE - 120 minute count rolling every 10 mins (T120/10)



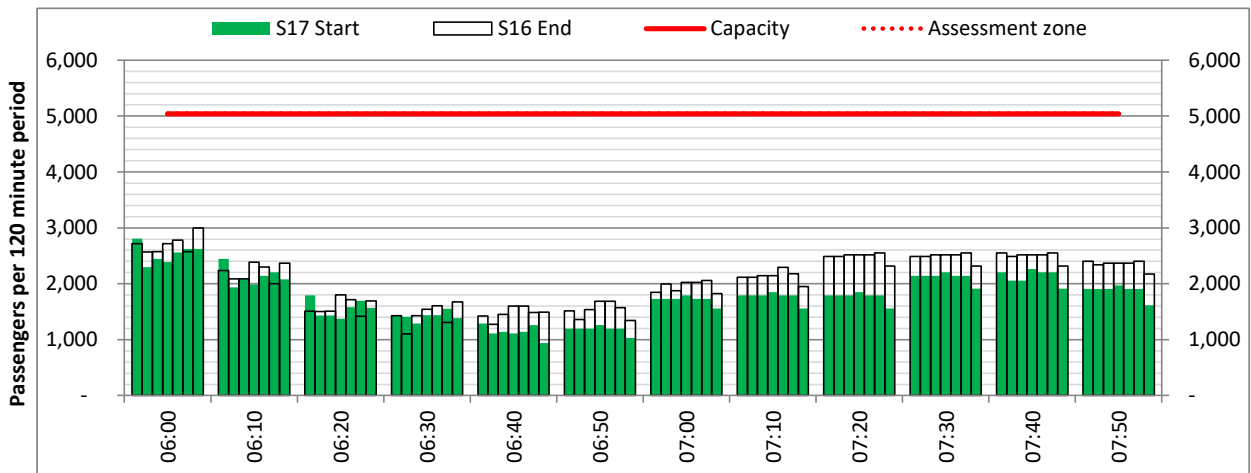
Terminals: 2

Operators: All Operators

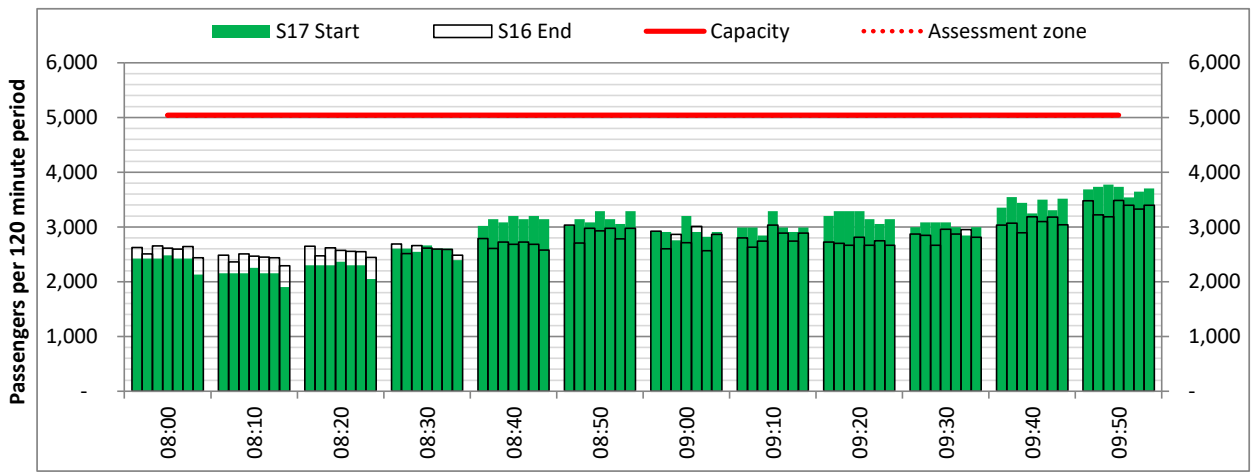
Days: 1234567



Start of count period - Time: UTC



Start of count period - Time: UTC



Start of count period - Time: UTC

# Peak Week - Passengers Histogram

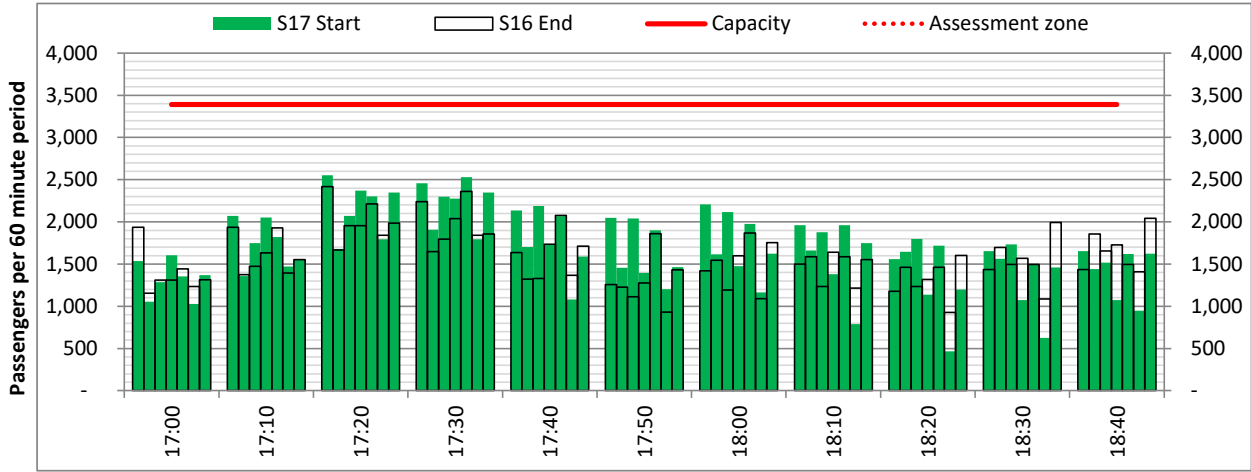
ARRIVAL - 60 minute count rolling every 10 mins (T60/10)



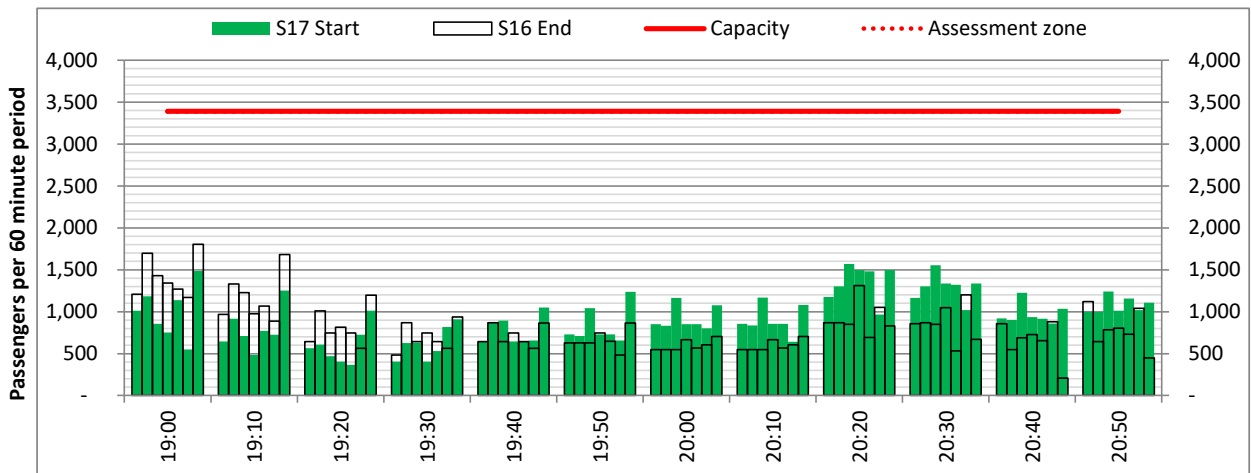
Terminals: 1

Operators: All Operators

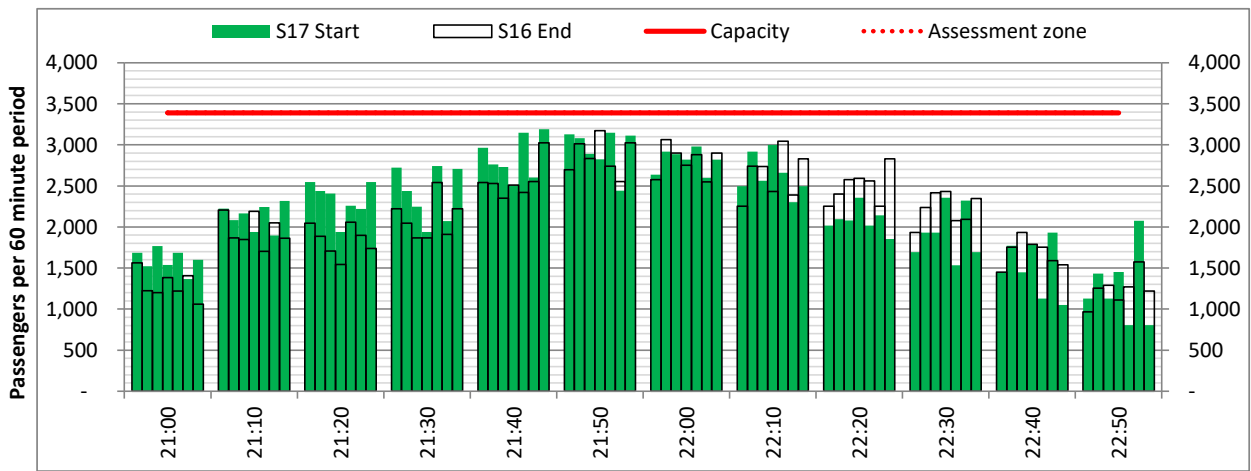
Days: 1234567



Start of count period - Time: UTC



Start of count period - Time: UTC



Start of count period - Time: UTC

# Peak Week - Passengers Histogram

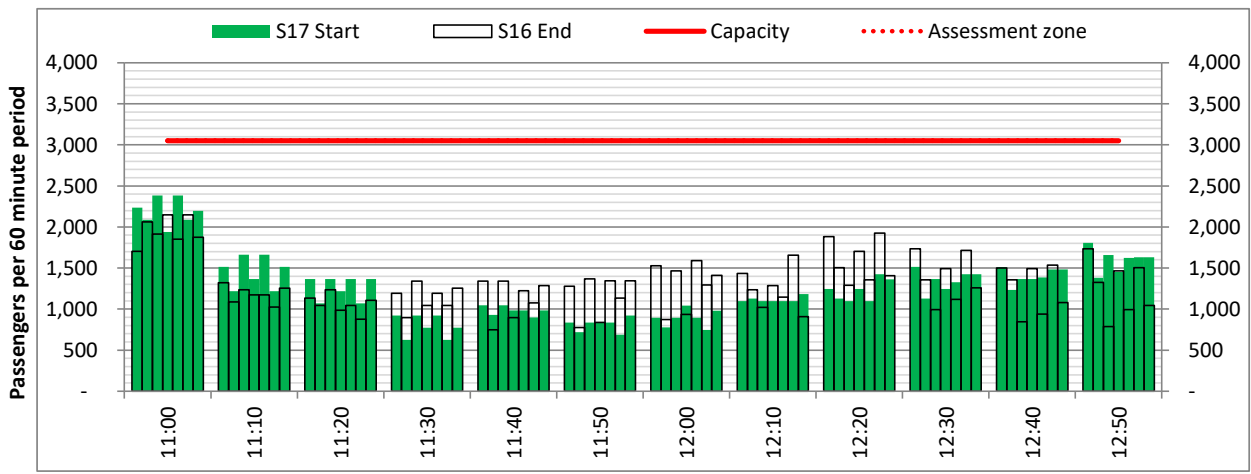
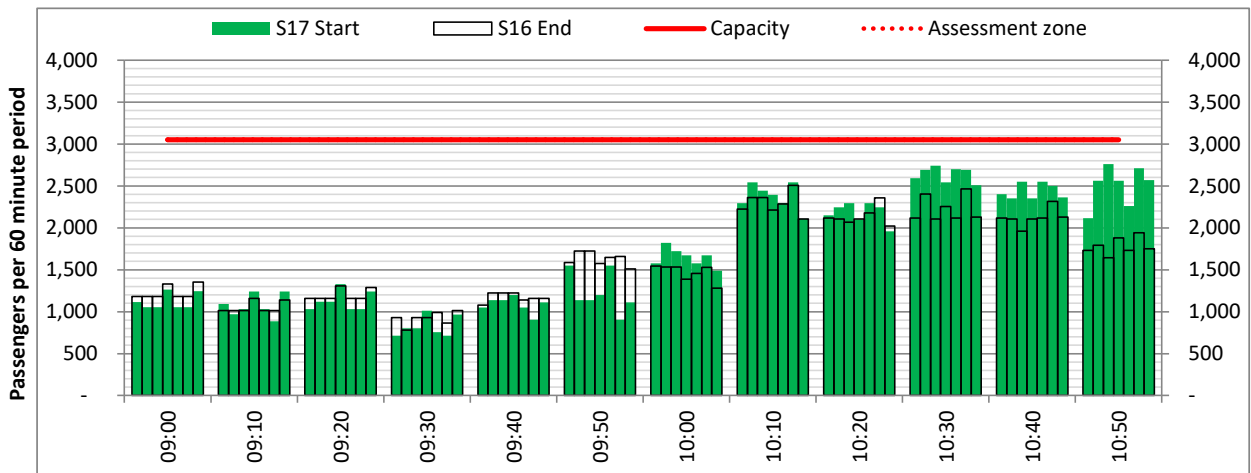
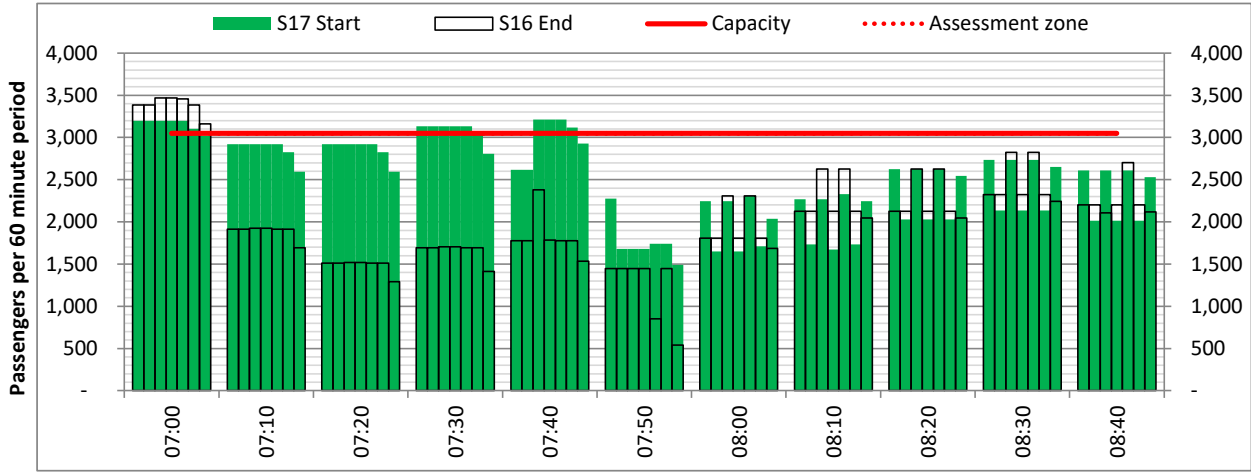


ARRIVAL - 60 minute count rolling every 10 mins (T60/10)

Terminals: 2

Operators: All Operators

Days: 1234567



# Peak Week - Passengers Histogram

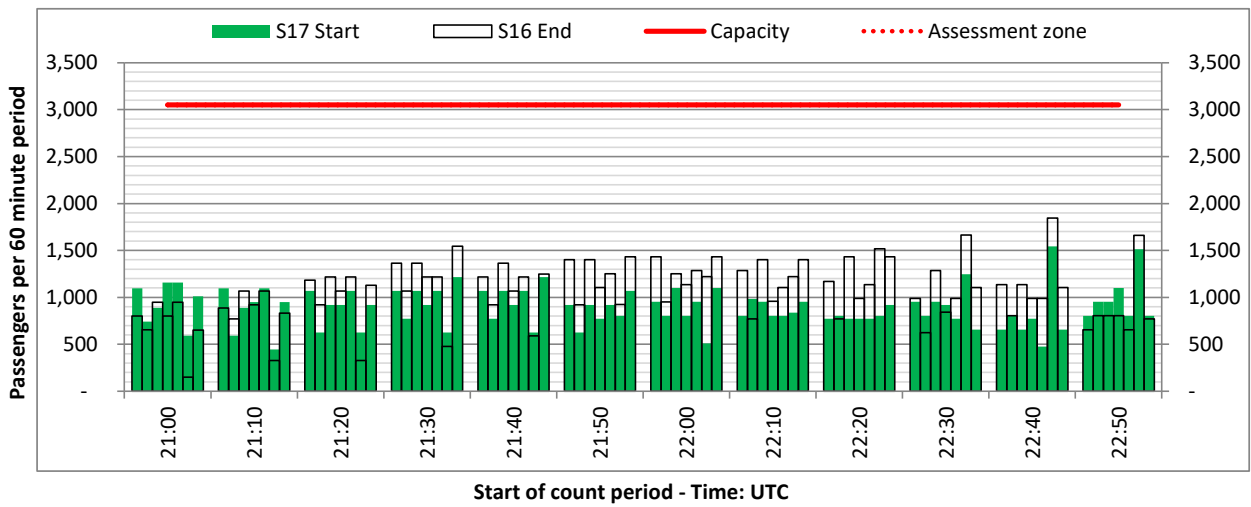
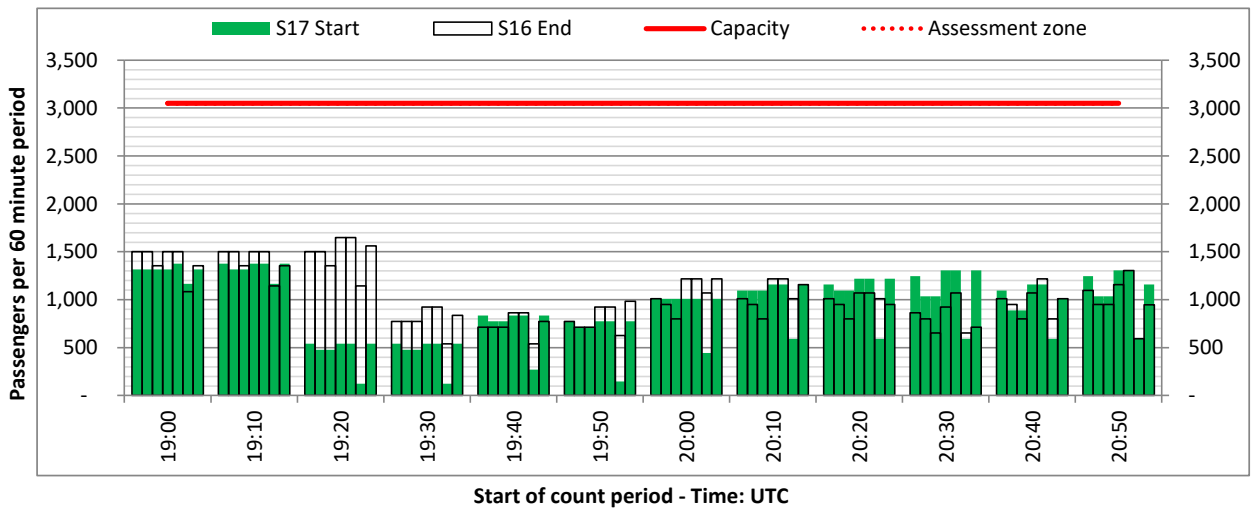
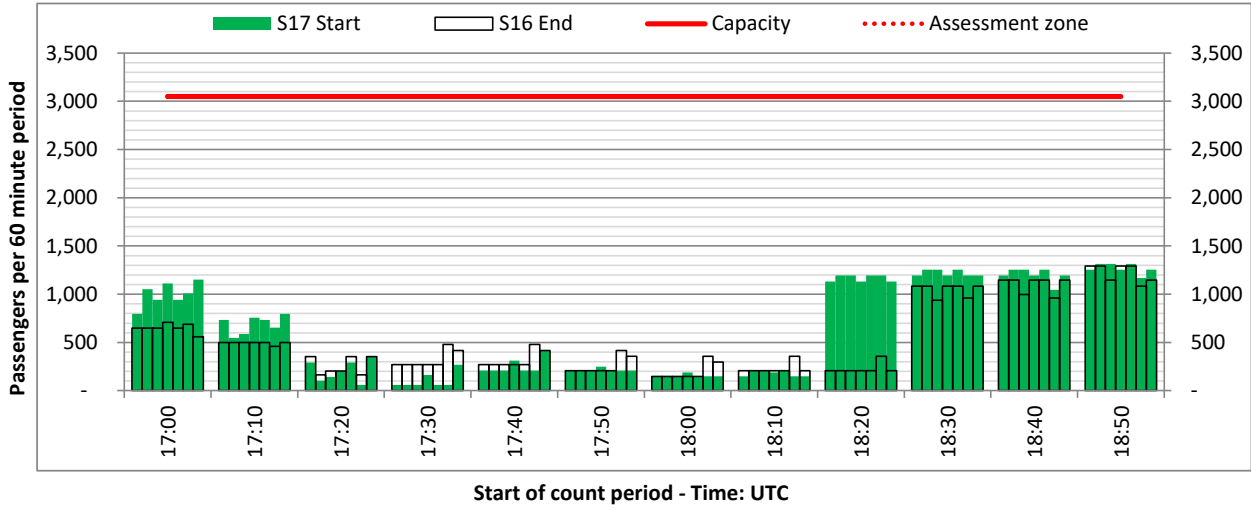


ARRIVAL - 60 minute count rolling every 10 mins (T60/10)

Terminals: 2

Operators: All Operators

Days: 1234567



<b>Air Transport Movement (ATM)</b>	Any aircraft movement which is either a scheduled or chartered passenger or cargo flight.
<b>Common Travel Area (CTA)</b>	Origin or Destination is in Republic of Ireland or the Channel Islands.
<b>Demand</b>	Unconstrained demand before any schedule adjustments have been made.
<b>"Fill-in"</b>	These are gaps in a historic series of slots which the carrier requests to "Fill-in" at Initial Submissions - Fill-ins will be recognisably part of the historic series and will have the same flight details to qualify as a "Fill-in".
<b>Hist (SHL)</b>	Snapshot of historic schedule rolled over from end of the previous equivalent season - as advised to airlines in the SHLs.
<b>ICAO Size A</b>	Aircraft with wingspan between 0.00m - 14.99m.
<b>ICAO Size B</b>	Aircraft with wingspan between 15.00m - 23.99m.
<b>ICAO Size C</b>	Aircraft with wingspan between 24.00m - 35.99m.
<b>ICAO Size D</b>	Aircraft with wingspan between 36.00m - 51.99m.
<b>ICAO Size E</b>	Aircraft with wingspan between 52.00m - 64.99m.
<b>ICAO Size F</b>	Aircraft with wingspan between 65.00m - 80.00m.
<b>Init Coord</b>	Snapshot of schedule immediately after Initial Coordination is completed - as advised to airlines in the SALs.
<b>Passenger Air Transport Movement (PATM)</b>	Any aircraft movement which is either a scheduled or chartered passenger flight.
<b>Start</b>	Snapshot of schedule shortly before the start of the scheduling season (exact date given below where used).
<b>Time: Local</b>	Times shown are in LOCAL time for the airport/scheduling season.
<b>Time: UTC</b>	Times shown are in Universal Time Constant (UTC).
<b><u>Data snapshot descriptions</u></b>	
<b>S16 Start</b>	S16 schedule as cleared on Thu 17-Mar-16.
<b>S16 End</b>	S16 schedule as cleared on Thu 20-Aug-15.
<b>S17 Start</b>	S17 schedule as cleared on Wed 15-Mar-17.
<b>Peak Week</b>	Peak week for S16 is Mon 11-Jul-16 to Sun 17-Jul-16. Peak week for S17 is Mon 10-Jul-17 to Sun 16-Jul-17.

**For ACL use**

	Airport-Season-Branch-Resource	From date	To date	Time
Full Season Rep 1	DUB-S16-SoS-Standard	Sun 27-Mar-2016	Sat 29-Oct-2016	UTC
Full Season Rep 2	DUB-S16-Live-Standard	Sun 27-Mar-2016	Sat 29-Oct-2016	UTC
Full Season Rep 3	DUB-S17-SoS-Standard	Sun 26-Mar-2017	Sat 28-Oct-2017	UTC
	Airport-Season-Branch-Resource	From date	To date	Time
Peak Week Rep 1	DUB-S16-SoS-Standard	Mon 11-Jul-2016	Sun 17-Jul-2016	UTC
Peak Week Rep 2	DUB-S16-Live-Standard	Mon 11-Jul-2016	Sun 17-Jul-2016	UTC
Peak Week Rep 3	DUB-S17-SoS-Standard	Mon 10-Jul-2017	Sun 16-Jul-2017	UTC