

AUCKLAND INTERNATIONAL AIRPORT

AKL

S17 Season Start Report (International Traffic)

Key Statistics	S16 Operated	S17 -Season Start	Percentage Change
Air Transport Movements	31,008	32,791	▲ 5.8%
Total Seats	7,309,992	8,051,273	▲ 10.1%
Seats per Passenger ATM	236	246	

Contents

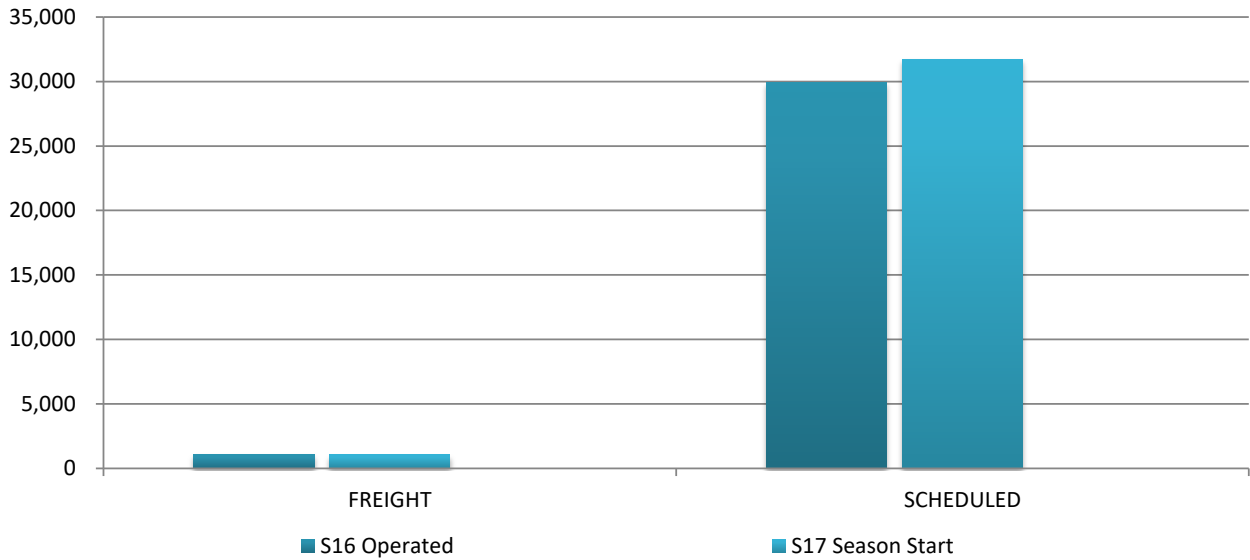
	Page
Movements and Seats by Service Type	2
Week Departure Frequencies by Carrier	3-5
Top 10 Airlines by ATM's and Seats	6
Top 20 Destinations by ATM's and Seats	7
International Terminal - Passengers per 60 Minutes	8-9
International Arrivals - Passengers per 30 Minutes	10
Glossary	11

Data in this report is current as of 15 March 2017

No warranty whether expressed or implied as to the completeness, accuracy, fitness for purpose, or satisfactory quality is given by ACL regarding the information in this report, which is provided by third parties. Accordingly, ACL excludes all liability with regard to such data.

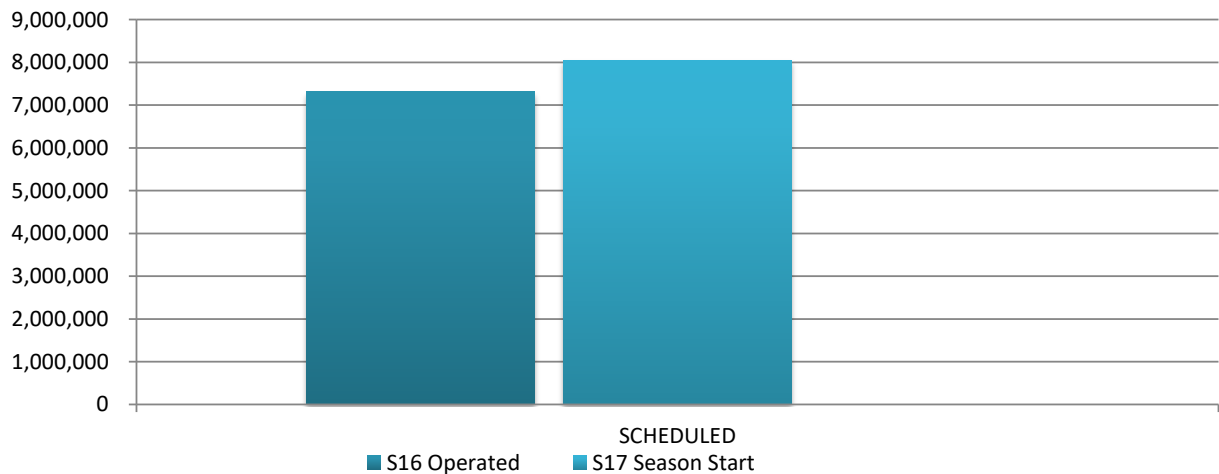
The contents of this report may not be reproduced without the written consent of ACL.

Full Season ATMs by Service Type



	S16 Operated	S17 Season Start	Percentage Change
FREIGHT	1,083	1,056	▼ -2%
SCHEDULED	29,925	31,735	▲ 6.0%
TOTAL	31,008	32,791	▲ 5.8%

Full Season Seats by Service Type



	S16 Operated	S17 Season Start	Percentage Change
SCHEDULED	7,309,992	8,051,273	▲ 10.1%
TOTAL	7,309,992	8,051,273	▲ 10.1%

AUCKLAND INTERNATIONAL AIRPORT
PEAK WEEK DEPARTURE FREQUENCIES - BY CARRIER
S17 Week 10 to 16 July 2017

OPERATOR	AIRPORT	S16		S17		SEATS +/-	ATMS +/-		
		SEATS	ATMS	SEATS	ATMS				
3U	Sichuan Airlines	CTU	Chengdu	0	0	900	3	900	3
3U Total				0	0	900	3	900	3
AA	American Airlines	LAX	Los Angeles International	1,582	7	1,582	7	0	0
AA Total				1,582	7	1,582	7	0	0
CA	Air China	PEK	Beijing Capital	948	4	1,172	4	224	0
CA Total				948	4	1,172	4	224	0
CI	China Airlines	TPE	Taipei Chiang Kai Shek	1,842	6	2,456	8	614	2
CI Total				1,842	6	2,456	8	614	2
CX	Cathay Pacific	HKG	Hong Kong Int'L	1,855	7	1,960	7	105	0
CX Total				1,855	7	1,960	7	105	0
CZ	China Southern Airlines	CAN	Guangzhou Baiyun	3,115	14	2,247	10	-868	-4
CZ Total				3,115	14	2,247	10	-868	-4
D7	Air AsiaX	KUL	Kuala Lumpur Int'L	2,639	7	0	0	-2,639	-7
		OOL	Gold Coast Coolangatta	0	0	2,639	7	2,639	7
D7 Total				2,639	7	2,639	7	0	0
EK	Emirates	DXB	Dubai	12,131	28	13,706	28	1,575	0
EK Total				12,131	28	13,706	28	1,575	0
FJ	Fiji Airways	NAN	Nadi International	2,320	12	2,455	14	135	2
		SUV	Nausori International Airport	408	3	408	3	0	0
FJ Total				2,728	15	2,863	17	135	2
FX	Fedex	CAN	Guangzhou Baiyun	0	1	0	1	0	0
FX Total				0	1	0	1	0	0
GS	Tianjin Airlines	TSN	Tianjin	0	0	520	2	520	2
GS Total				0	0	520	2	520	2
HA	Hawaiian Airlines	HNL	Honolulu International	882	3	834	3	-48	0
HA Total				882	3	834	3	-48	0
HJ	Tasman Pacific Airlines	SYD	Sydney Kingsford Smith	0	4	0	5	0	1
HJ Total				0	4	0	5	0	1
HU	Hainan Airlines	SZX	Shenzhen	0	0	780	3	780	3
HU Total				0	0	780	3	780	3
HX	Hong Kong Airlines	HKG	Hong Kong Int'L	0	0	1,981	7	1,981	7

AUCKLAND INTERNATIONAL AIRPORT
PEAK WEEK DEPARTURE FREQUENCIES - BY CARRIER
S17 Week 10 to 16 July 2017

OPERATOR	AIRPORT	S16		S17		SEATS +/-	ATMS +/-		
		SEATS	ATMS	SEATS	ATMS				
HX Total		0	0	1,981	7	1,981	7		
JQ	Jetstar Airlines	MEL	Melbourne	2,110	10	1,440	8	-670	-2
		OOL	Gold Coast Coolangatta	1,260	7	1,260	7	0	0
		RAR	Rarotonga	540	3	540	3	0	0
		SYD	Sydney Kingsford Smith	1,595	8	1,595	8	0	0
JQ Total				5,505	28	4,835	26	-670	-2
KE	Korean Air	ICN	Seoul Incheon Intl	1,044	4	1,164	4	120	0
KE Total				1,044	4	1,164	4	120	0
LA	Lan Airlines	SCL	Santiago Arturo Merino Benitez	2,191	7	2,177	7	-14	0
		SYD	Sydney Kingsford Smith	2,191	7	2,177	7	-14	0
LA Total				4,382	14	4,354	14	-28	0
MH	Malaysia Airlines	KUL	Kuala Lumpur Int'L	1,981	7	2,030	7	49	0
MH Total				1,981	7	2,030	7	49	0
MU	China Eastern Airlines	PVG	Shanghai Pu Dong	1,834	7	1,834	7	0	0
MU Total				1,834	7	1,834	7	0	0
NF	Air Vanuatu	VLJ	Vanuatu	680	4	510	3	-170	-1
NF Total				680	4	510	3	-170	-1
NZ	Air New Zealand	ADL	Adelaide	840	5	840	5	0	0
		APW	Apia Faleolo	1,920	8	2,082	10	162	2
		BNE	Brisbane International	3,882	16	3,906	17	24	1
		CNS	Cairns	1,128	5	1,272	5	144	0
		DPS	Denpasar Bali Ngurah Rai	468	2	906	3	438	1
		EZE	Buenos Aires Ministro Pistarini	936	3	906	3	-30	0
		HKG	Hong Kong Int'L	2,184	7	2,184	7	0	0
		HNL	Honolulu International	1,510	5	1,812	7	302	2
		IAH	Houston	1,560	5	1,872	6	312	1
		IUE	Niue International Airport	336	2	336	2	0	0
		LAX	Los Angeles International	2,558	8	2,706	8	148	0
		LHR	London Heathrow	2,324	7	2,394	7	70	0
		MCY	Sunshine Coast Airport	672	4	672	4	0	0
		MEL	Melbourne	5,666	22	5,926	23	260	1

AUCKLAND INTERNATIONAL AIRPORT
PEAK WEEK DEPARTURE FREQUENCIES - BY CARRIER
S17 Week 10 to 16 July 2017

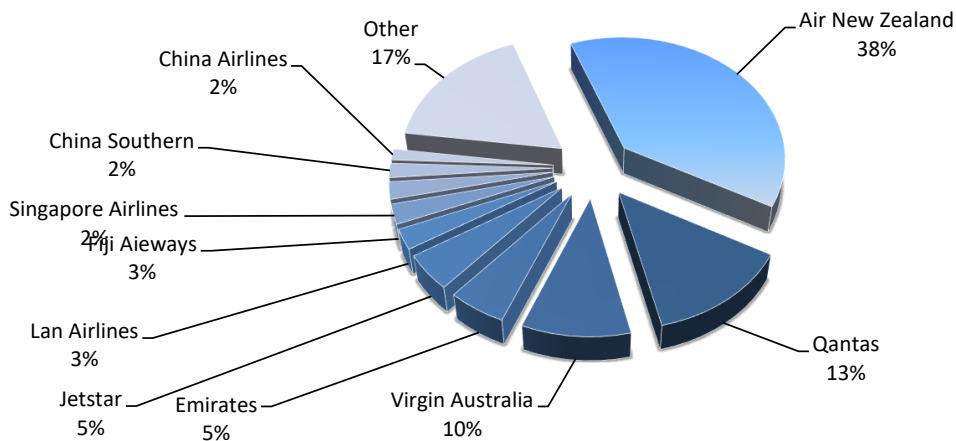
OPERATOR	AIRPORT	S16		S17		SEATS +/-	ATMS +/-		
		SEATS	ATMS	SEATS	ATMS				
	NAN Nadi International	4,386	17	4,380	19	-6	2		
	NLK Norfolk Island Airport	168	1	0	0	-168	-1		
	NOU Noumea	504	3	504	3	0	0		
	NRT Tokyo Narita	2,114	7	2,114	7	0	0		
	OOL Gold Coast Coolangatta	1,344	8	1,176	7	-168	-1		
	PER Perth	2,114	7	2,114	7	0	0		
	PPT Papeete Faaa	702	3	916	3	214	0		
	PVG Shanghai Pu Dong	2,114	7	2,114	7	0	0		
	RAR Rarotonga	2,544	10	2,014	8	-530	-2		
	SFO San Francisco International	2,304	7	2,364	7	60	0		
	SGN Ho Chi Minh City	702	3	604	2	-98	-1		
	SIN Singapore Changi	2,184	7	2,114	7	-70	0		
	SYD Sydney Kingsford Smith	8,112	35	8,598	32	486	-3		
	TBU Nuku'Alofa Fua'Amotu Internationa	1,296	6	1,410	6	114	0		
	YVR Vancouver	1,560	5	1,560	5	0	0		
NZ Total		58,132	225	59,796	227	1,664	2		
PR	Philippine Airlines	MNL	Manila	624	4	624	4	0	0
PR Total				624	4	624	4	0	0
QF	Qantas	BNE	Brisbane International	2,184	13	2,262	13	78	0
		CNS	Cairns	0	1	0	0	0	-1
		MEL	Melbourne	3,024	18	3,480	20	456	2
		SYD	Sydney Kingsford Smith	5,544	39	6,279	39	735	0
QF Total				10,752	71	12,021	72	1,269	1
QR	Qatar Airways	DOH	Doha	0	0	1,813	7	1,813	7
QR Total				0	0	1,813	7	1,813	7
SB	Aircalin Air Caledonie Int	NOU	Noumea	462	3	462	3	0	0
SB Total				462	3	462	3	0	0
SQ	Singapore Airlines	SIN	Singapore Changi	1,848	12	1,848	12	0	0
SQ Total				1,848	12	1,848	12	0	0
TG	Thai Airways International Public Lt	BKK	Bangkok International	1,460	5	1,460	5	0	0
TG Total				1,460	5	1,460	5	0	0

AUCKLAND INTERNATIONAL AIRPORT
PEAK WEEK DEPARTURE FREQUENCIES - BY CARRIER
S17 Week 10 to 16 July 2017

OPERATOR		AIRPORT		S16		S17		SEATS +/-		ATMS +/-	
				SEATS	ATMS	SEATS	ATMS				
TN	Air Tahiti Nui	LAX	Los Angeles International	882	3	882	3	0	0		
TN Total				882	3	882	3	0	0		
UA	United Airlines	SFO	San Francisco International	657	3	0	0	-657	-3		
UA Total				657	3	0	0	-657	-3		
VA	Virgin Australia	APW	Apia Faleolo	1,232	7	1,232	7	0	0		
		BNE	Brisbane International	2,464	14	2,464	14	0	0		
		MEL	Melbourne	1,584	9	1,760	10	176	1		
		OOL	Gold Coast Coolangatta	1,408	8	1,232	7	-176	-1		
		RAR	Rarotonga	704	4	704	4	0	0		
		SYD	Sydney Kingsford Smith	1,760	10	1,760	10	0	0		
		TBU	Nuku'Alofa Fua'Amotu Internationa	352	2	352	2	0	0		
VA Total				9,504	54	9,504	54	0	0		

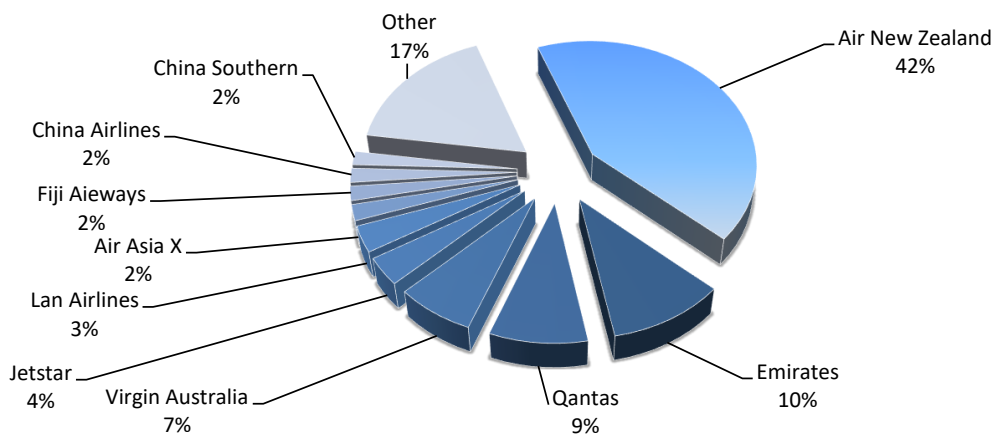
Top 10 Airlines by Air Transport Movements (ATMs)

Airline	Movements
Air New Zealand	12,609
Qantas	4,404
Virgin Australia	3,241
Emirates	1,738
Jetstar	1,558
Lan Airlines	868
Fiji Aieways	849
Singapore Airlines	744
China Southern	620
China Airlines	478
Other	5,682

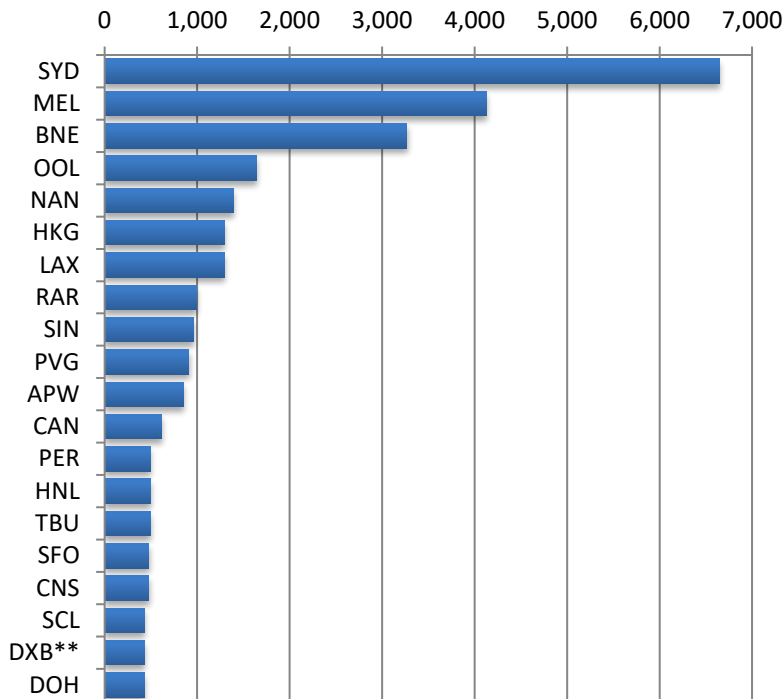


Top 10 Airlines by Air Seats

Airline	Seats
Air New Zealand	3,384,825
Emirates	849,772
Qantas	705,221
Virgin Australia	570,416
Jetstar	289,740
Lan Airlines	269,948
Air Asia X	163,618
Fiji Aieways	148,017
China Airlines	146,746
China Southern	139,314
Other	1,383,656



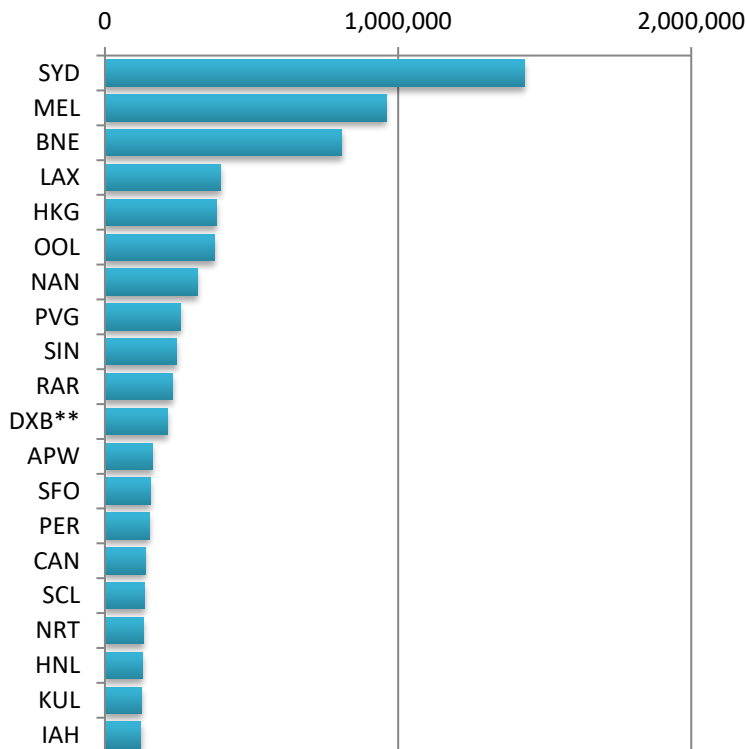
Air Transport Top 20 Movements by Destination



Destination	ATM'S
SYD	6,650
MEL	4,128
BNE	3,269
OOL	1,641
NAN	1,397
HKG	1,301
LAX	1,301
RAR	994
SIN	958
PVG	912
APW	855
CAN	620
PER	500
HNL	498
TBU	495
SFO	479
CNS	479
SCL	434
DXB**	434
DOH	434

** EK DXB Direct service

Air Transport Top 20 Seats by Destination

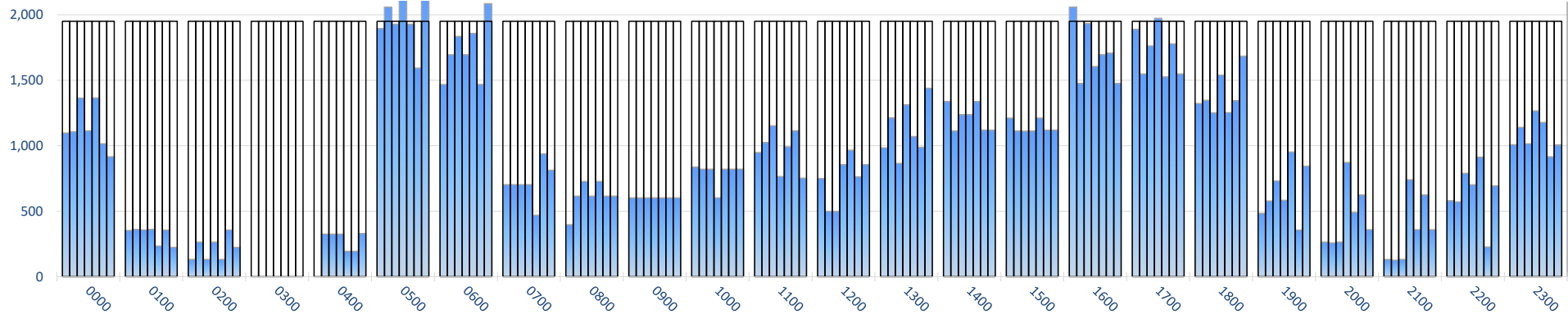


Destination	SEATS
SYD	1,431,806
MEL	958,918
BNE	808,658
LAX	393,236
HKG	379,464
OOL	374,806
NAN	316,193
PVG	258,784
SIN	245,519
RAR	230,234
DXB**	213,094
APW	161,098
SFO	154,623
PER	150,473
CAN	139,314
SCL	134,974
NRT	130,464
HNL	126,944
KUL	125,570
IAH	122,928

** EK DXB Direct service

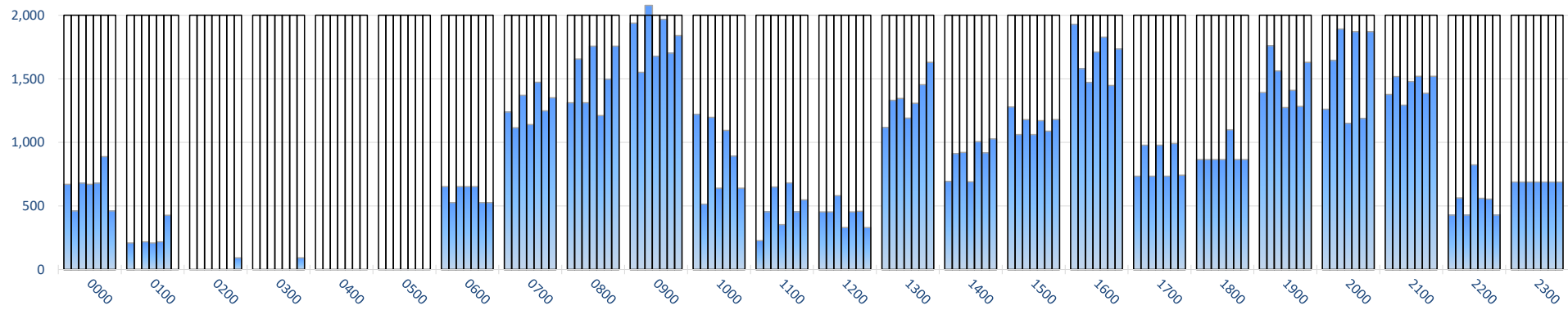
INTERNATIONAL TERMINAL ARRIVALS (PER 60 MINUTES, ROLLING EVERY 5 MINUTES)

Week Movements per Hour - All times LOCAL



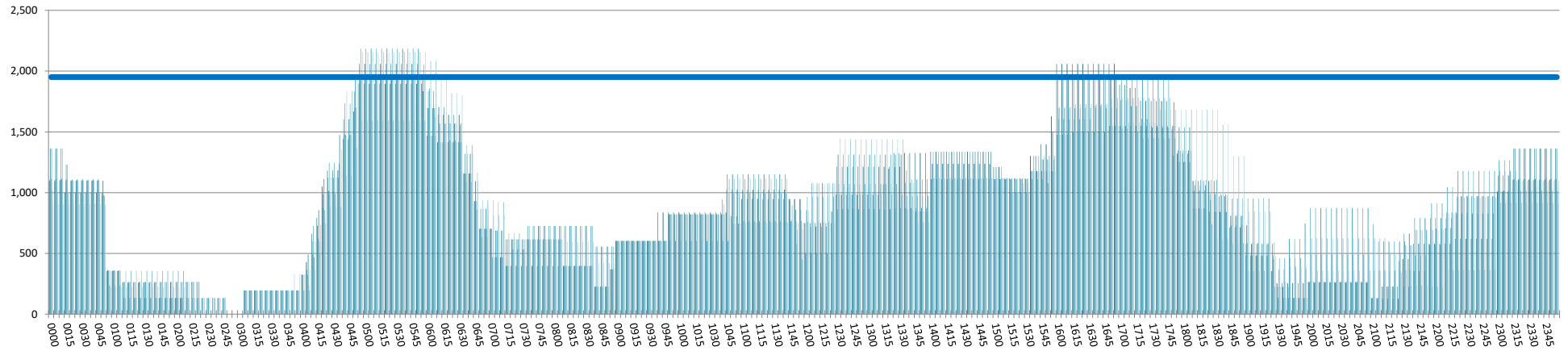
INTERNATIONAL TERMINAL DEPARTURES (PER 60 MINUTES, ROLLING EVERY 5 MINUTES)

Week Movements per Hour - All times LOCAL



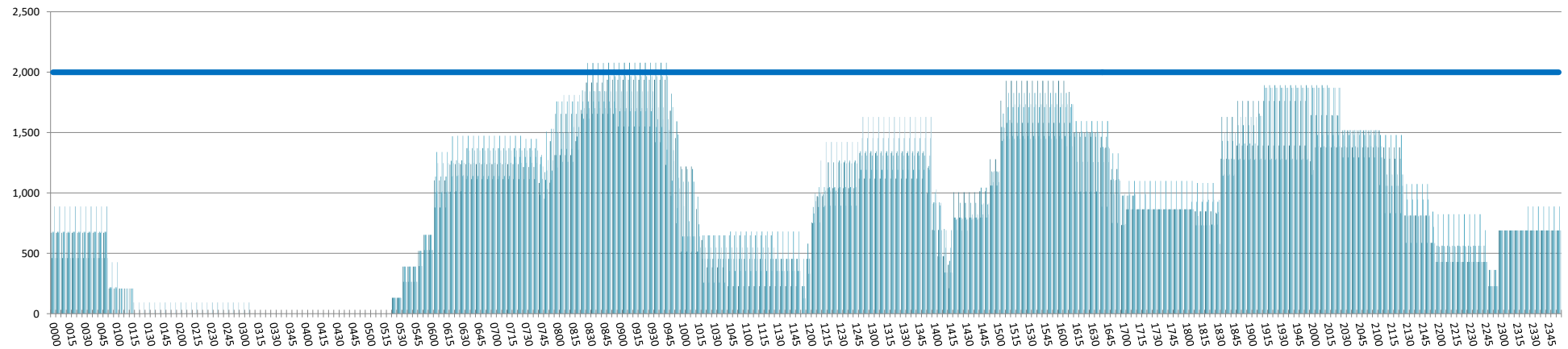
INTERNATIONAL TERMINAL ARRIVALS (PER 60 MINUTES, ROLLING EVERY 5 MINUTES)

Week Movements per Hour - All times LOCAL



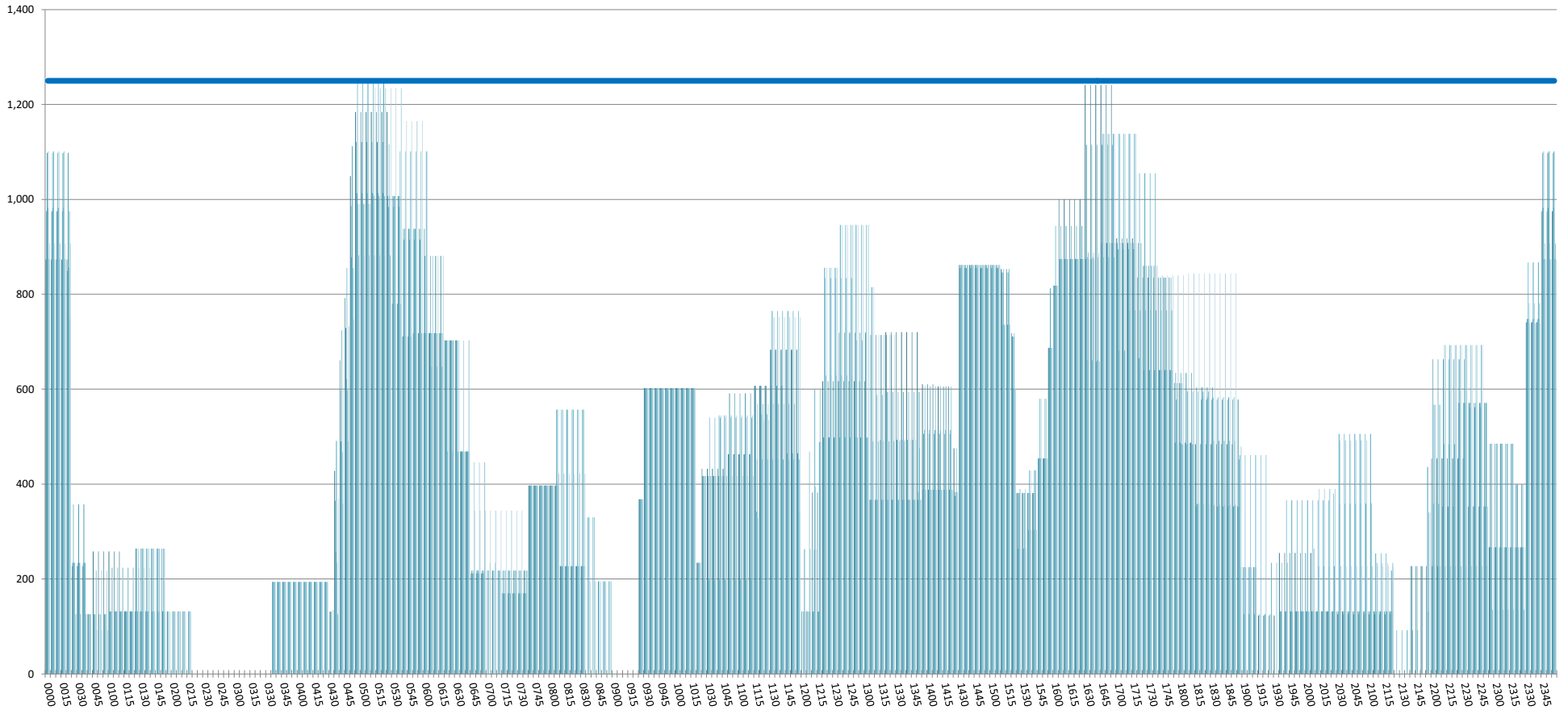
INTERNATIONAL TERMINAL DEPARTURES (PER 60 MINUTES, ROLLING EVERY 5 MINUTES)

Week Movements per Hour - All times LOCAL



INTERNATIONAL TERMINAL ARRIVALS (PER 30 MINUTES, ROLLING EVERY 5 MINUTES)

Week Movements - All times LOCAL



GLOSSARY OF TERMS

Air Transport Movement (ATM)	A scheduled or charter passenger or freight aircraft movement.
Allocation	The allocation of slots such that demand is constrained to fit within declared scheduling limits.
Common Travel Area (CTA)	Services to or from the Republic of Ireland and the Channel Islands.
Demand	The unconstrained demand for slots, prior to any schedule adjustments.
Passenger ATM	A scheduled or charter <u>passenger</u> aircraft movement (ie, excluding all-cargo aircraft movements).
Scheduling Limits	Limiting parameters declared by the Airport Operator used in the coordination process.
Seats	The number of seats based on the aircraft configuration advised by the airline.
Average Week	Peak Week for S17 is 10-16 July 2017
Data Snapshot	All data used for this report was as held 15 March 2017

GUIDE TO HISTOGRAMS

The histograms show the pattern of traffic by time of day against the appropriate scheduling limit. Each time period consist of seven columns representing the days-of-week, Monday through Sunday.