

# Dublin International Airport

## DUB

### Winter 2012

### START OF SEASON REPORT

KEY STATISTICS	Winter 2012	Change from Winter 2011 (End of Season)	Change from Winter 2011 (Start of Season)
Air Transport Movements	58,291	8.4%	9.7%
Total Seats	9,162,511	11.9%	7.2%
Seats per Passenger ATM	159	3.7%	-0.6%

ATM AND TOTAL SEATS INCLUDE ALL SERVICE TYPES.....SEATS PER PASSENGER ATM INCLUDE C/J/G SERVICE TYPE ONLY

W11 ADJUSTED TO REFLECT 21 WEEKS FOR COMPARISON

W12 peak week 29OCT - 04NOV (Week 31)

CONTENTS	Page
Distribution of schedule adjustments	3
Top 10 Airlines by ATM's	4
Top 10 Airlines by seats	5
Top destinations	6
R60 Movement Demands - Departures	7
R60 Movement Demands - Arrivals	8
R60 Movement Demands - Totals	9
R10 Movement Demands - Departures	10
R10 Movement Demands - Arrivals	11
R10 Movement Demands - Totals	12
Terminal 1 Demands - Arrivals	13
Terminal 1 Demands - Departures	14
Terminal 2 Demands - Arrivals (Weighted)	15
Terminal 2 Demands - Departures (Weighted)	16
Terminal 2 Demands - Arrivals (Non Weighted)	17
Terminal 2 Demands - Departures (Non Weighted)	18

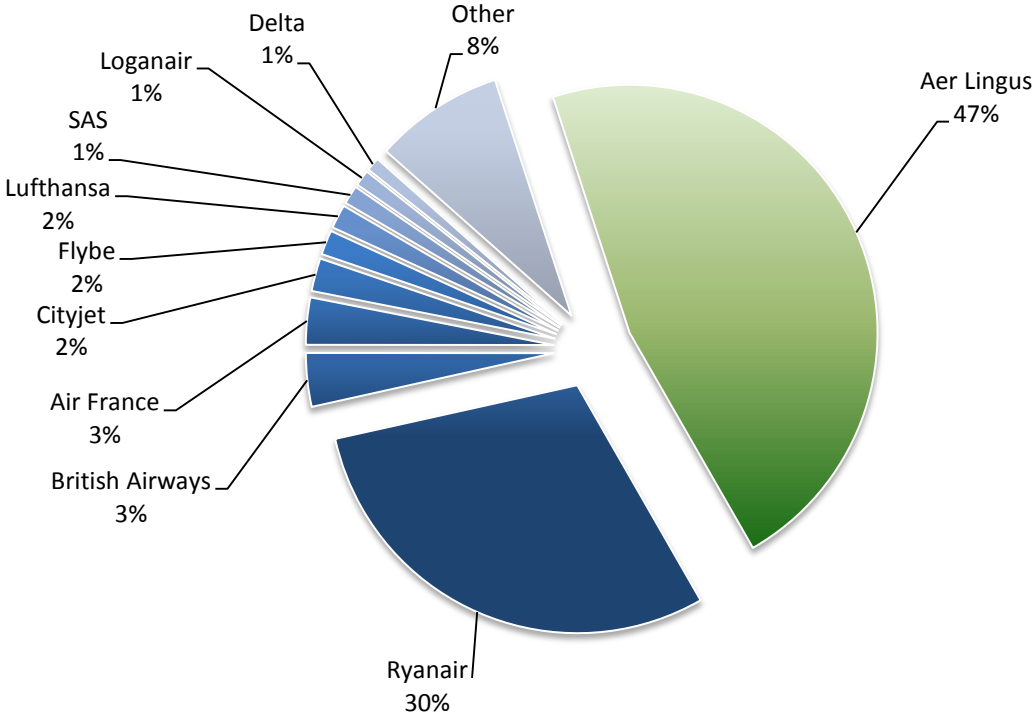
Data in this report is current as of: 19 September 2012

No warranty whether expressed or implied as to the completeness, accuracy, fitness for purpose, or satisfactory quality is given by ACL regarding the information in this report, which is provided by third



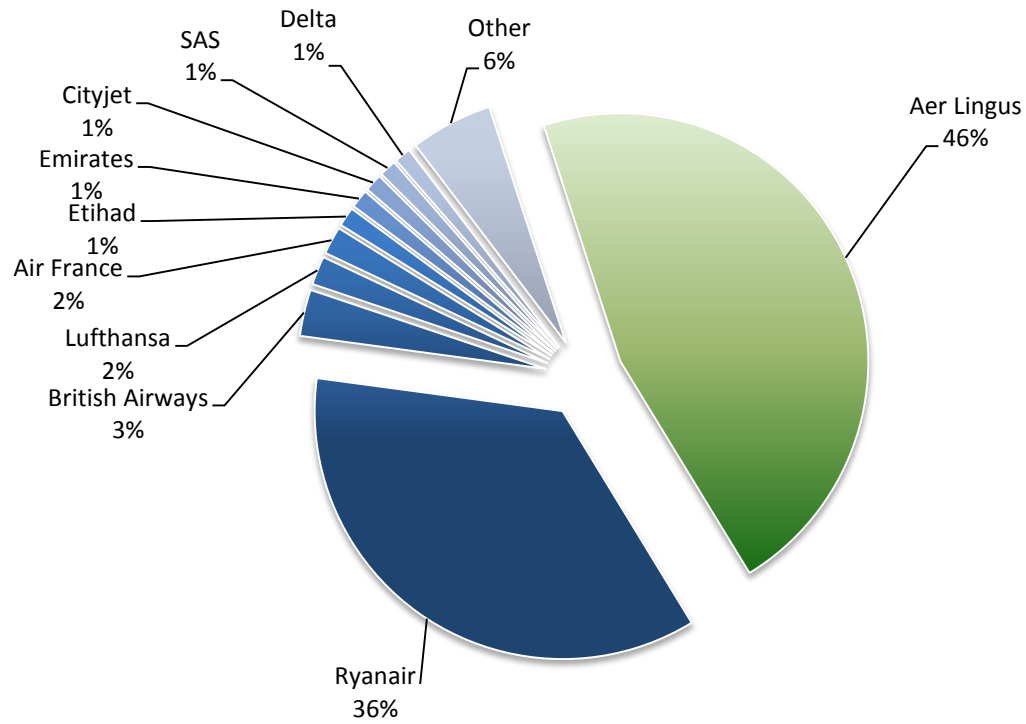


# TOP 10 AIRLINES BY MOVEMENTS (ATM's)



Aircraft	ATMs
Aer Lingus	27,229
Ryanair	17,377
British Airways	2,034
Air France	1,788
Cityjet	1,256
Flybe	932
Lufthansa	907
SAS	708
Loganair	608
Delta	524
Other	4,928

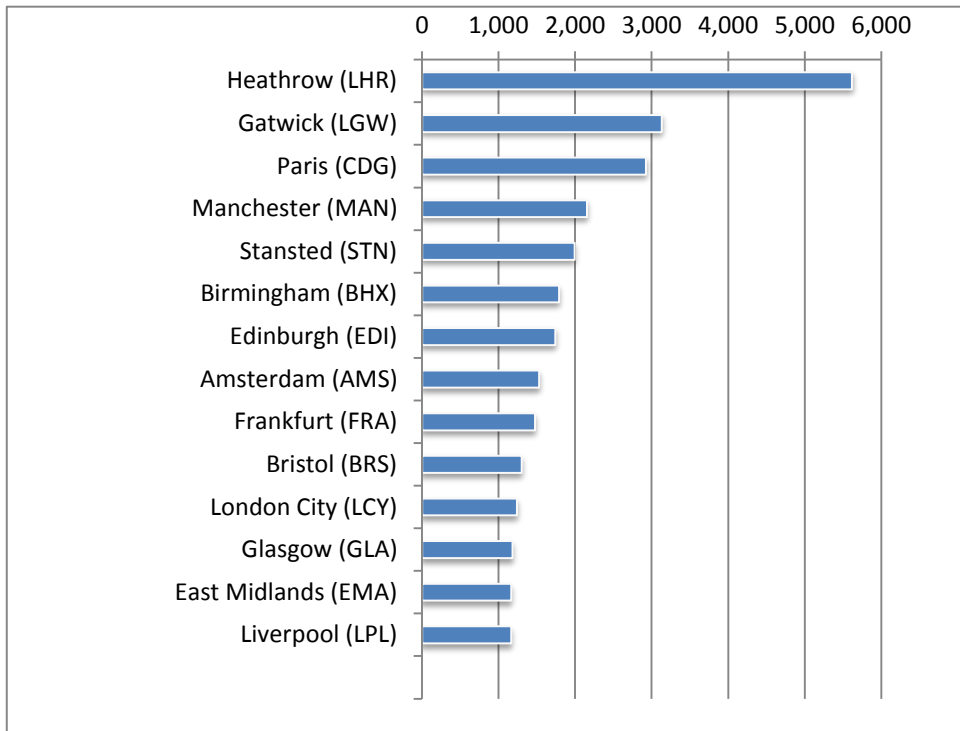
## TOP 10 AIRLINES BY SEATS



Aircraft	Seats
Aer Lingus	4,240,602
Ryanair	3,284,253
British Airways	277,790
Lufthansa	171,423
Air France	165,680
Etihad	115,280
Emirates	110,160
Cityjet	106,458
SAS	101,792
Delta	98,382
Other	490,691

## AIR TRANSPORT MOVEMENTS BY DESTINATION

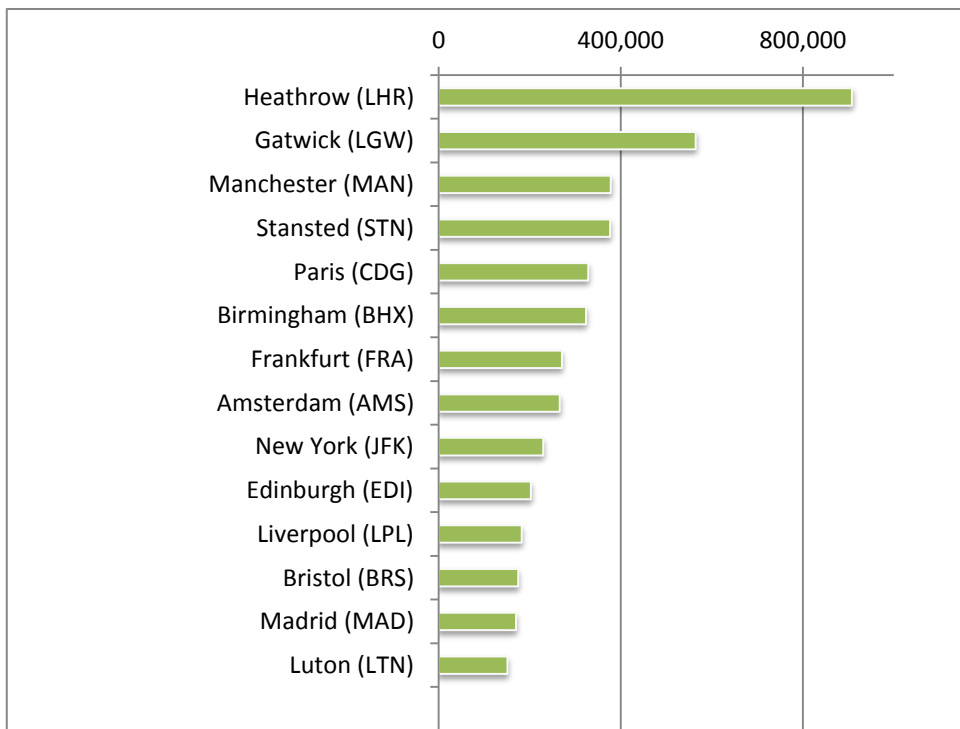
Total Allocated Movements For Season W12



Winter 2012	ATM'S
Heathrow (LHR)	5,617
Gatwick (LGW)	3,132
Paris (CDG)	2,926
Manchester (MAN)	2,155
Stansted (STN)	1,992
Birmingham (BHX)	1,789
Edinburgh (EDI)	1,742
Amsterdam (AMS)	1,530
Frankfurt (FRA)	1,476
Bristol (BRS)	1,302
London City (LCY)	1,242
Glasgow (GLA)	1,182
East Midlands (EMA)	1,164
Liverpool (LPL)	1,164

## AIR TRANSPORT SEATS BY DESTINATION

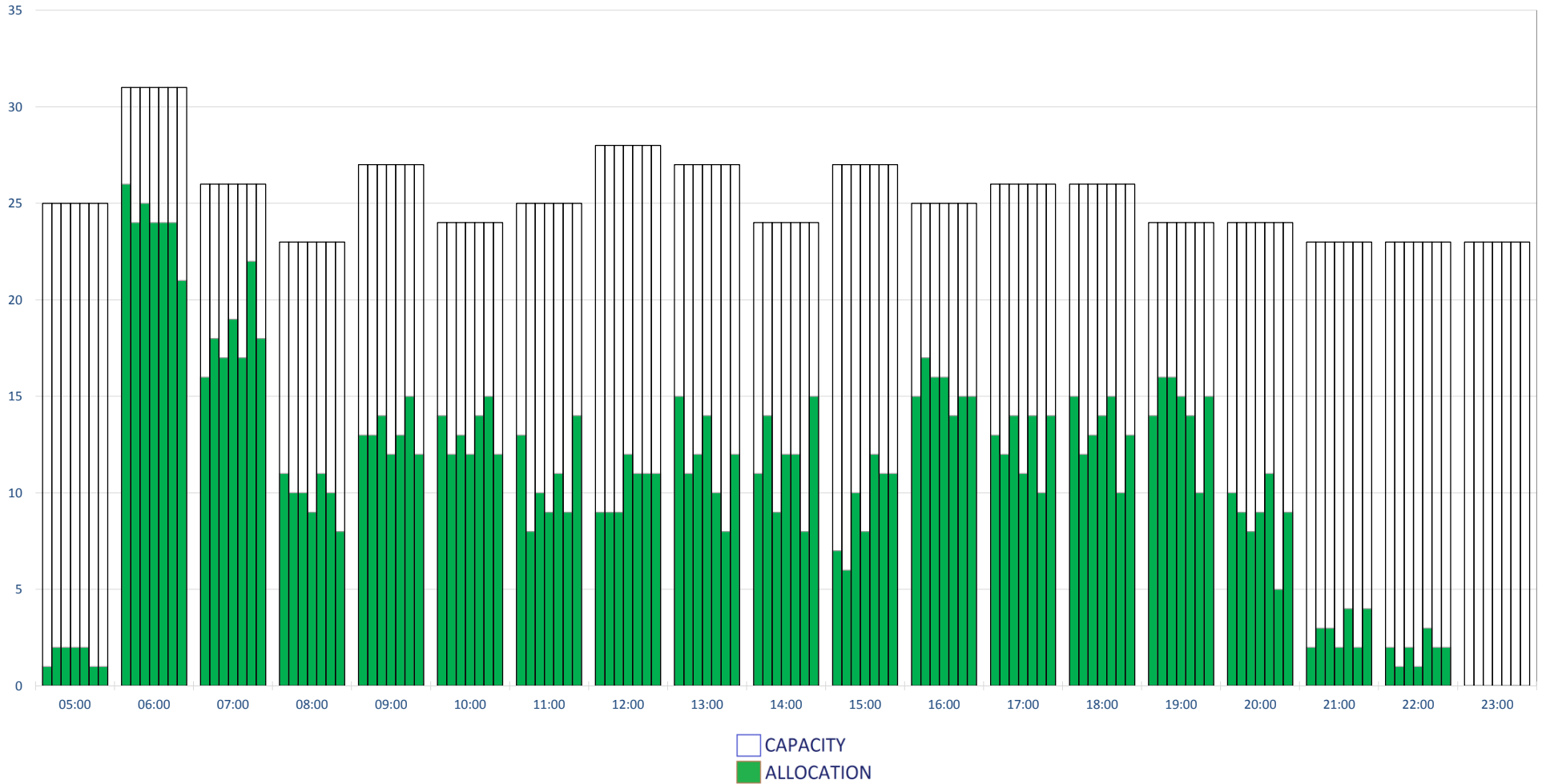
Total Allocated Movements For Season W12



Winter 2012	SEATS
Heathrow (LHR)	907,996
Gatwick (LGW)	564,348
Manchester (MAN)	378,303
Stansted (STN)	376,488
Paris (CDG)	328,568
Birmingham (BHX)	323,631
Frankfurt (FRA)	270,429
Amsterdam (AMS)	266,220
New York (JFK)	229,486
Edinburgh (EDI)	202,843
Liverpool (LPL)	182,007
Bristol (BRS)	174,383
Madrid (MAD)	169,941
Luton (LTN)	150,822

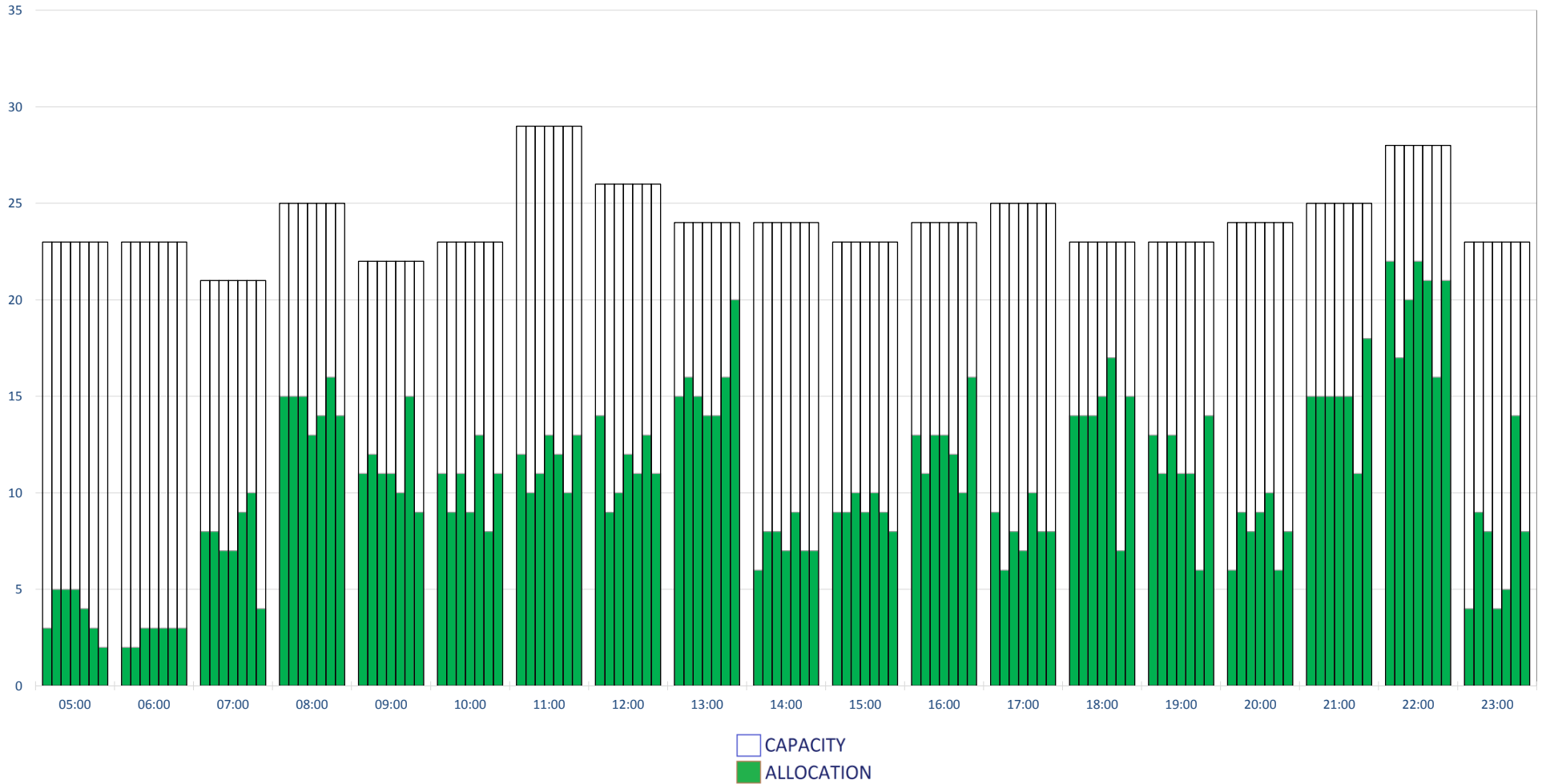
### RUNWAY (R60) MOVEMENT AS AT 19 SEPTEMBER 2012 - DEPARTURES

Peak Week Movements per Hour - All times UTC



### RUNWAY (R60) MOVEMENT AS AT 19 SEPTEMBER 2012 - ARRIVALS

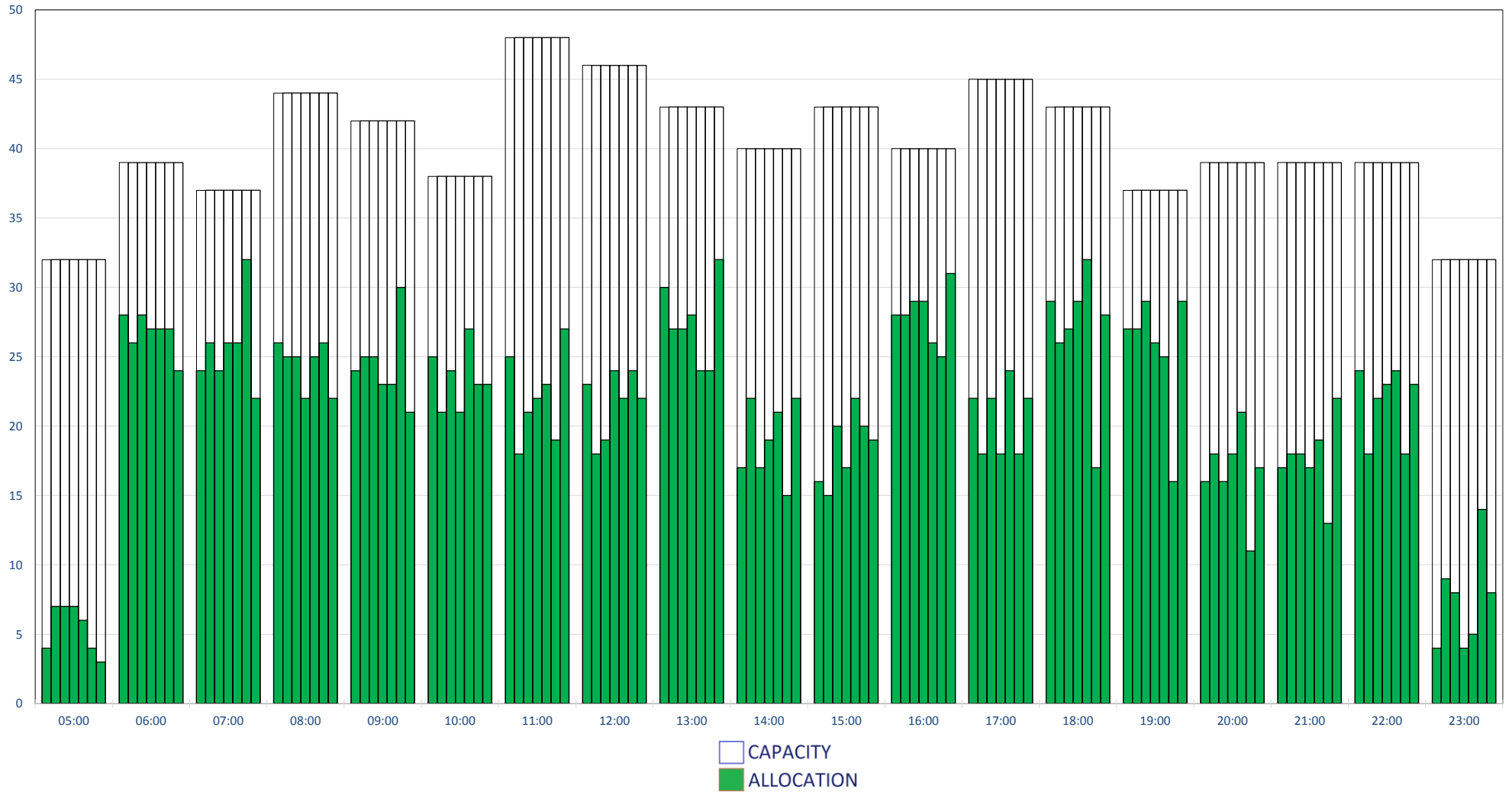
Peak Week Movements per Hour - All times UTC





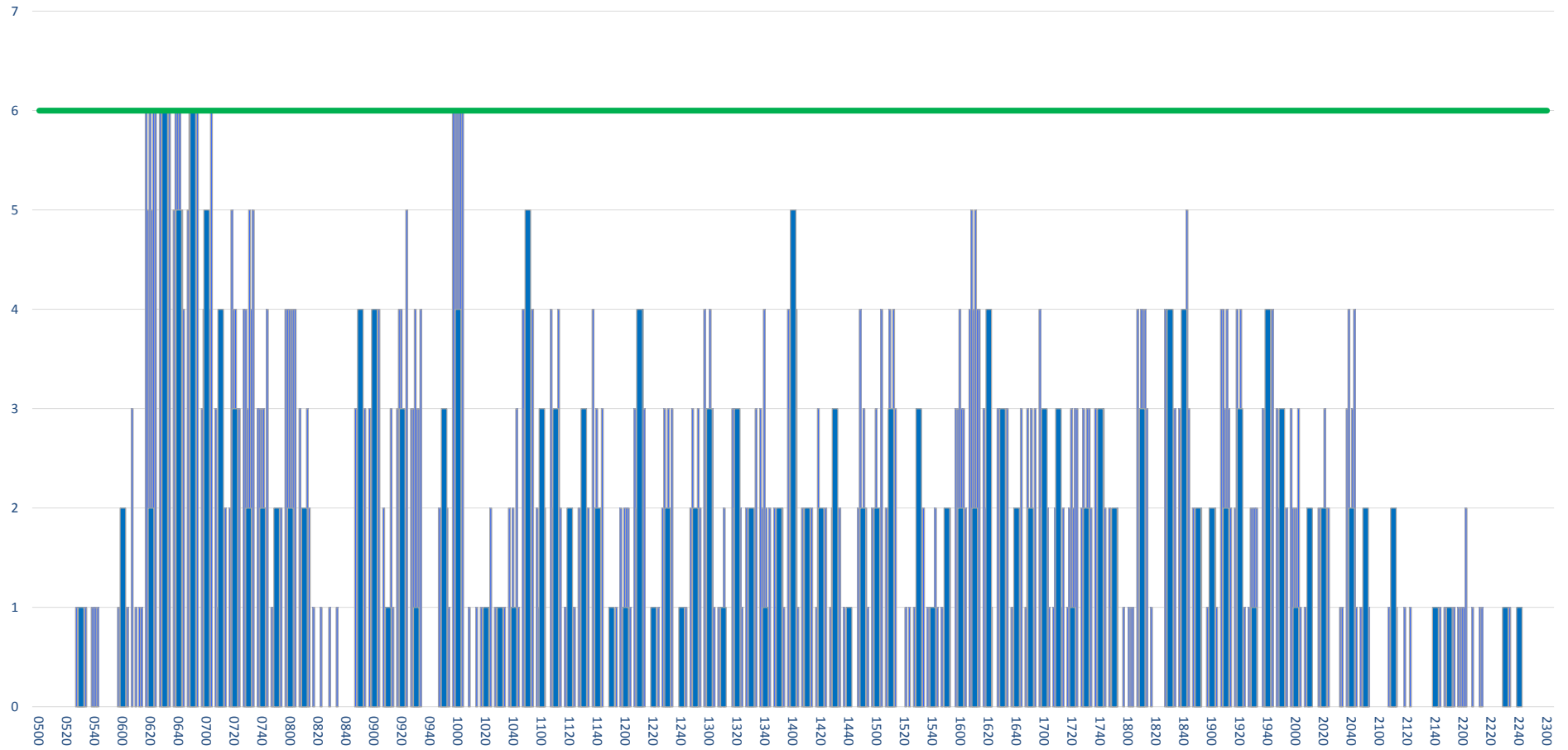
### RUNWAY (R60) MOVEMENT AS AT 19 SEPTEMBER 2012 - TOTALS

Peak Week Movements per Hour - All times UTC



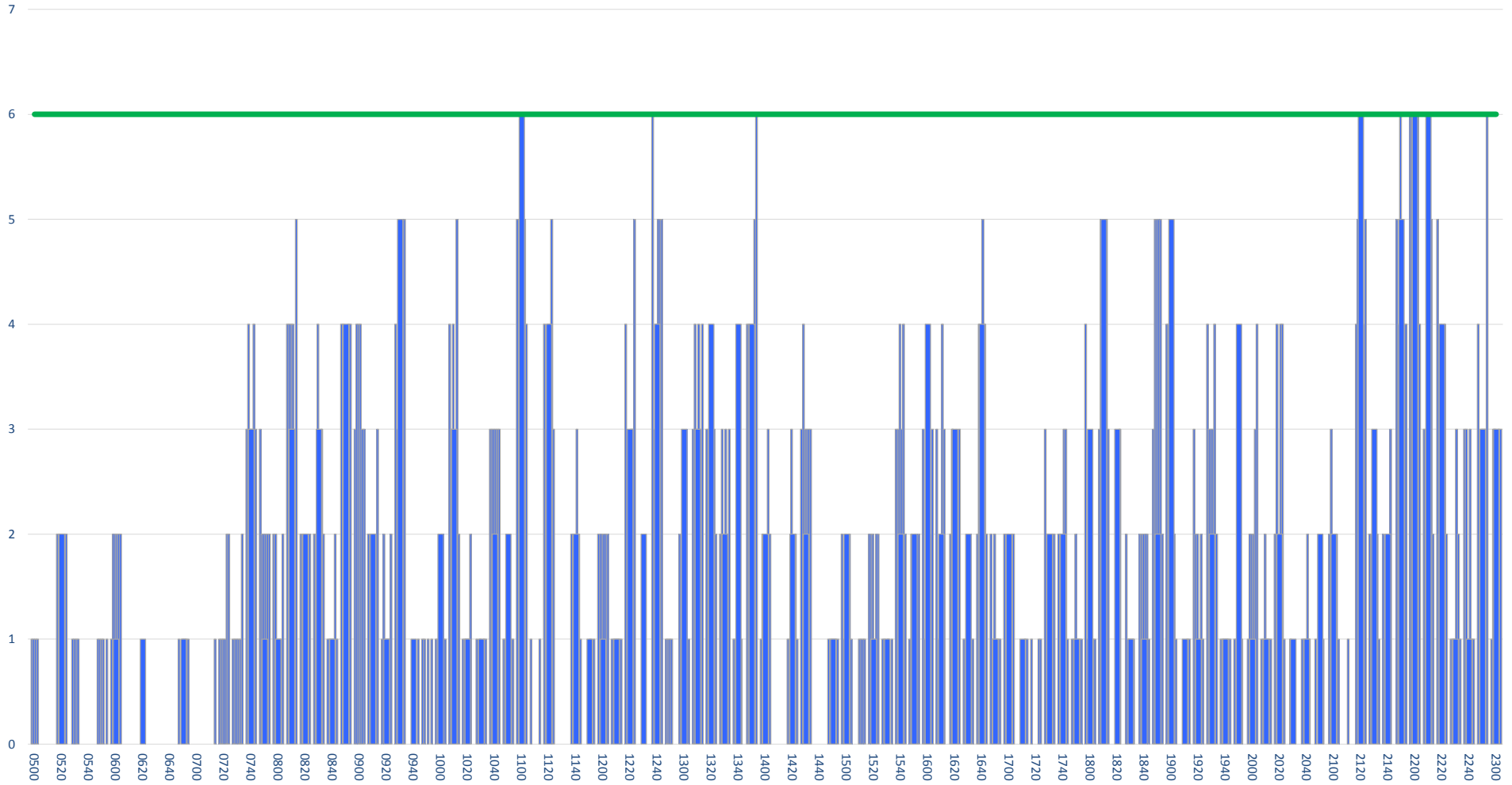
### RUNWAY (R10) MOVEMENT AS AT 19 SEPTEMBER 2012 - DEPARTURES

Peak Week Movements per Hour - All times UTC



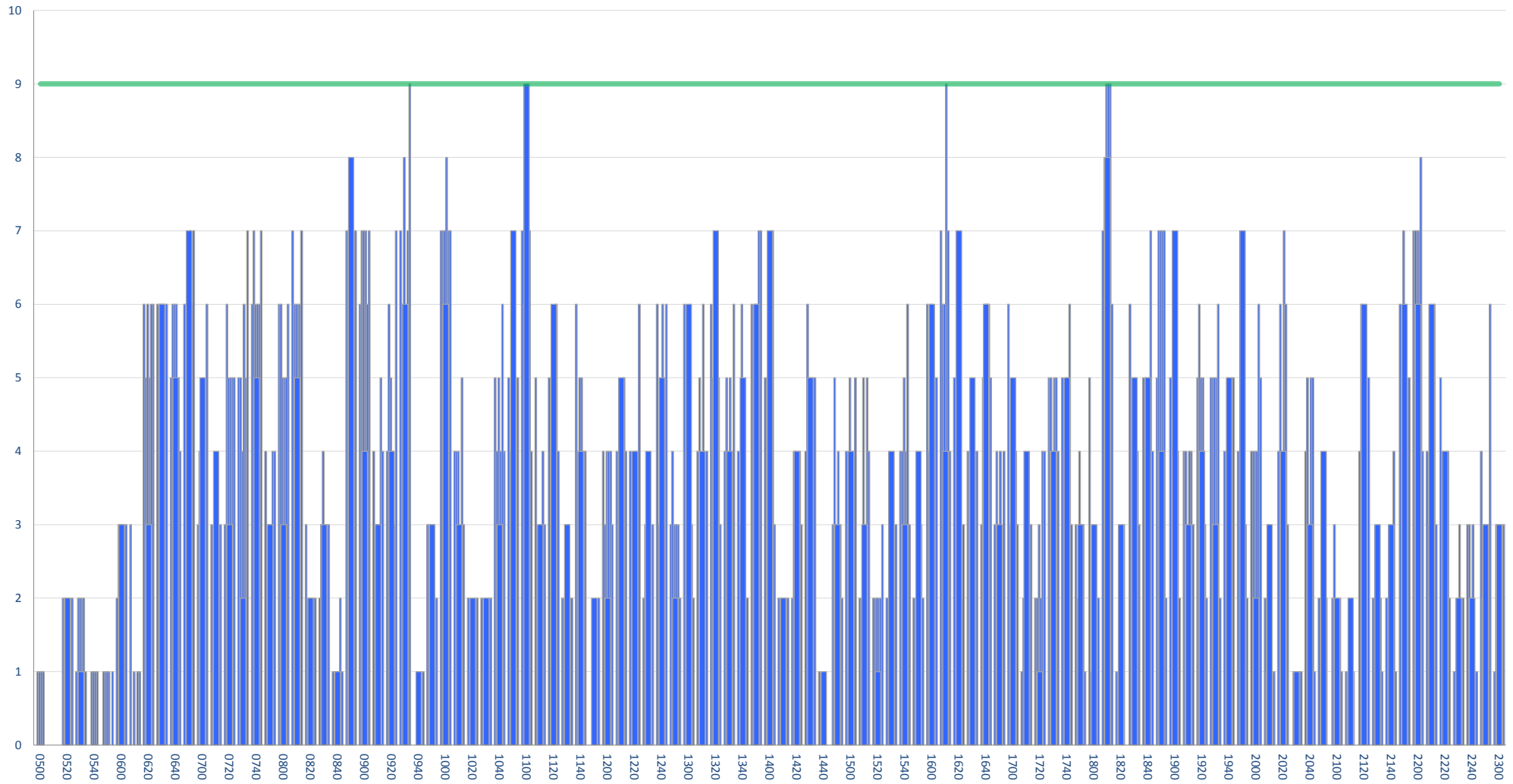
### RUNWAY (R10) MOVEMENT AS AT 19 SEPTEMBER 2012 - ARRIVALS

Peak Week Movements per Hour - All times UTC



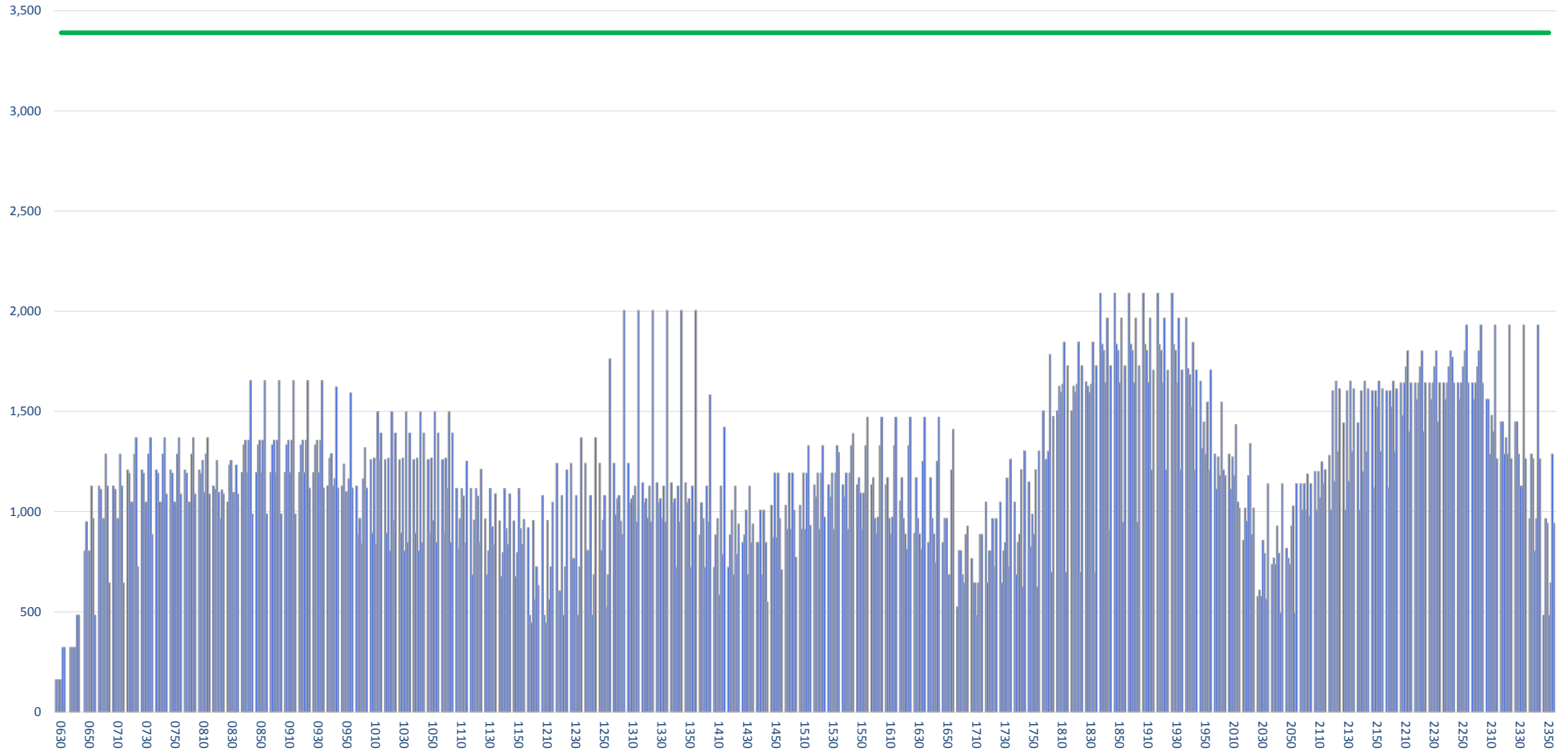
### RUNWAY (R10) MOVEMENT AS AT 19 SEPTEMBER 2012 - TOTALS

Peak Week Movements per Hour - All times UTC



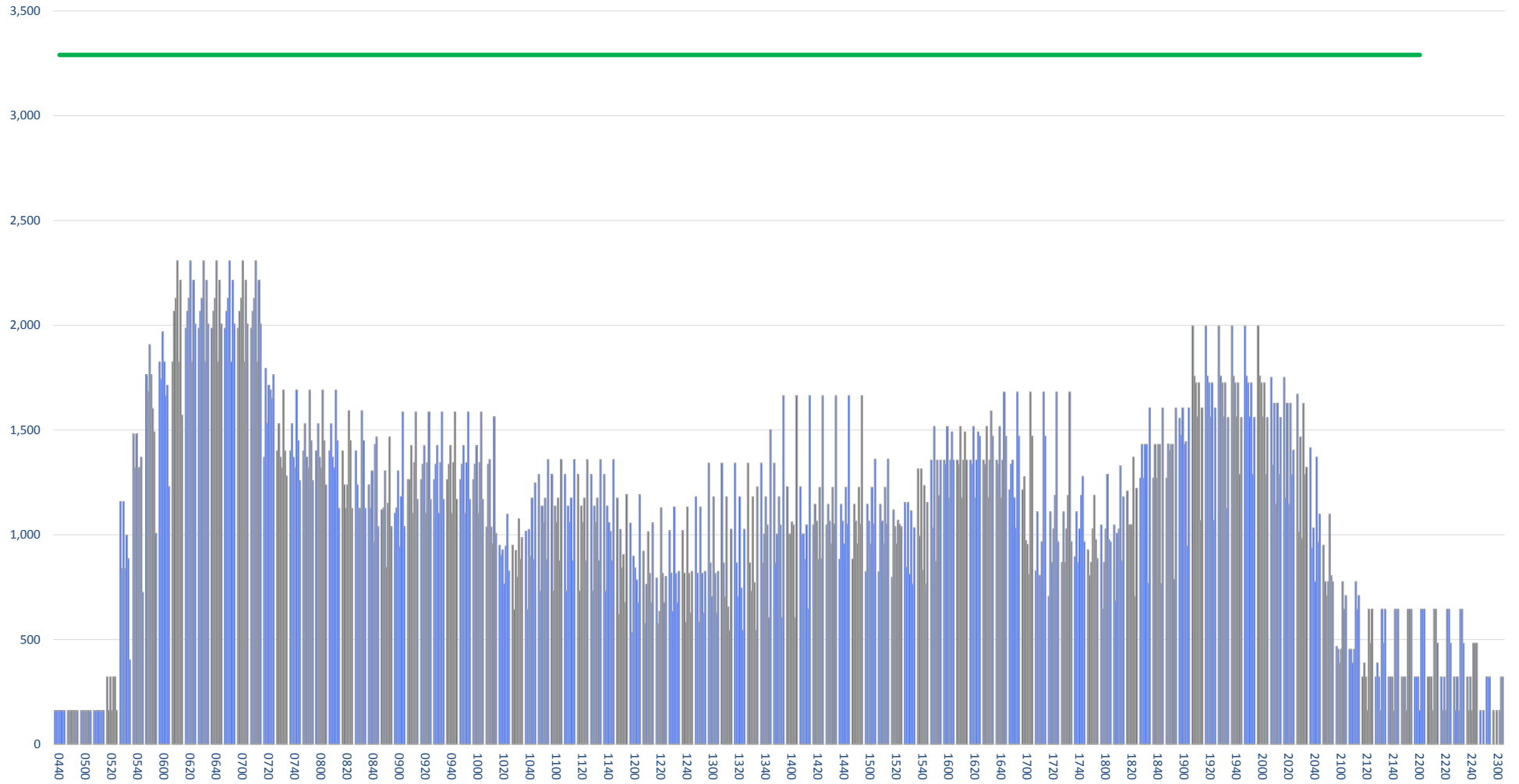
### TERMINAL 1 T60/10 ARRIVALS AS AT 19 SEPTEMBER 2012

Peak Week Passengers per Hour - All times UTC



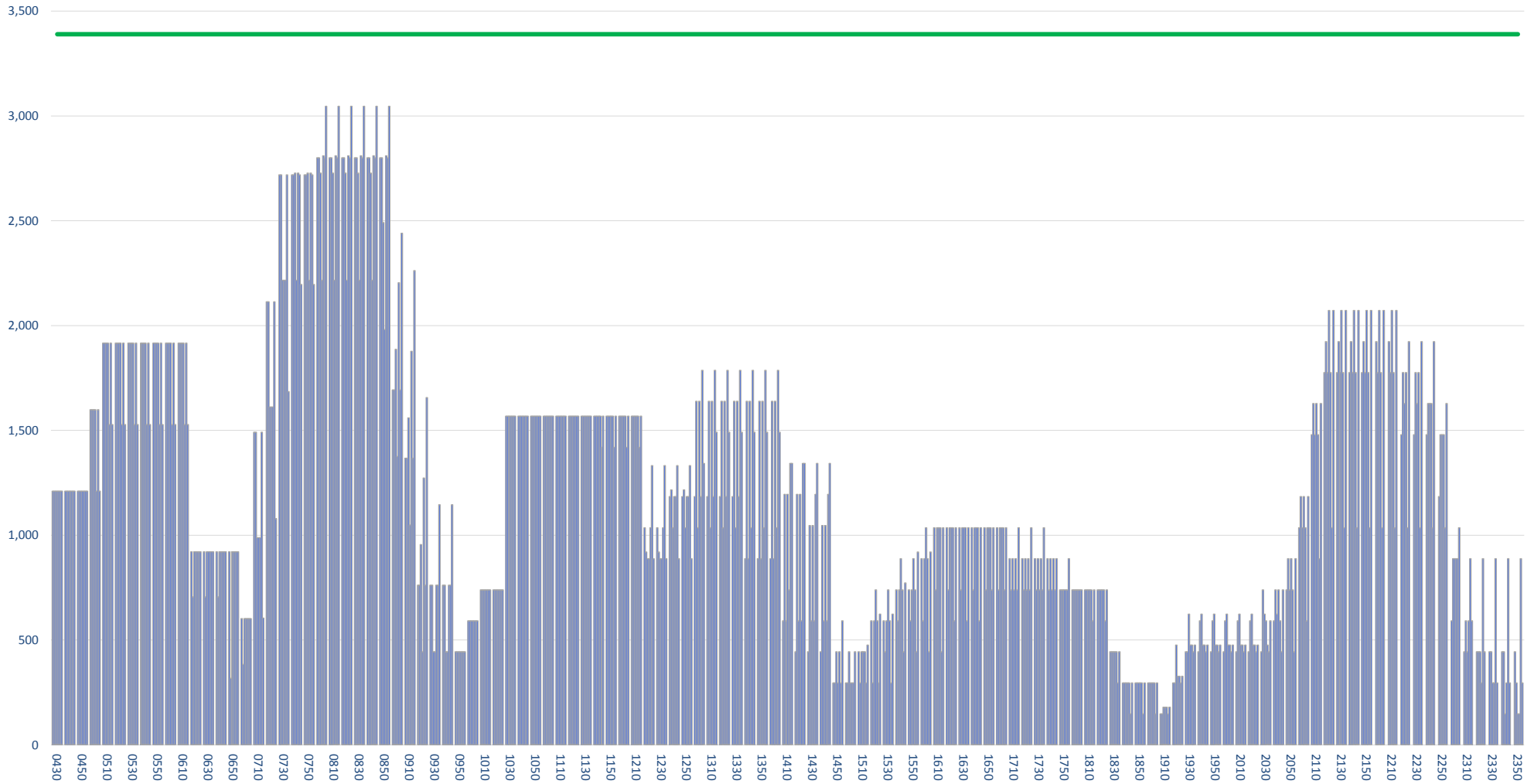
### TERMINAL 1 T60/10 DEPARTURES AS AT 19 SEPTEMBER 2012

Peak Week Passengers per Hour - All times UTC



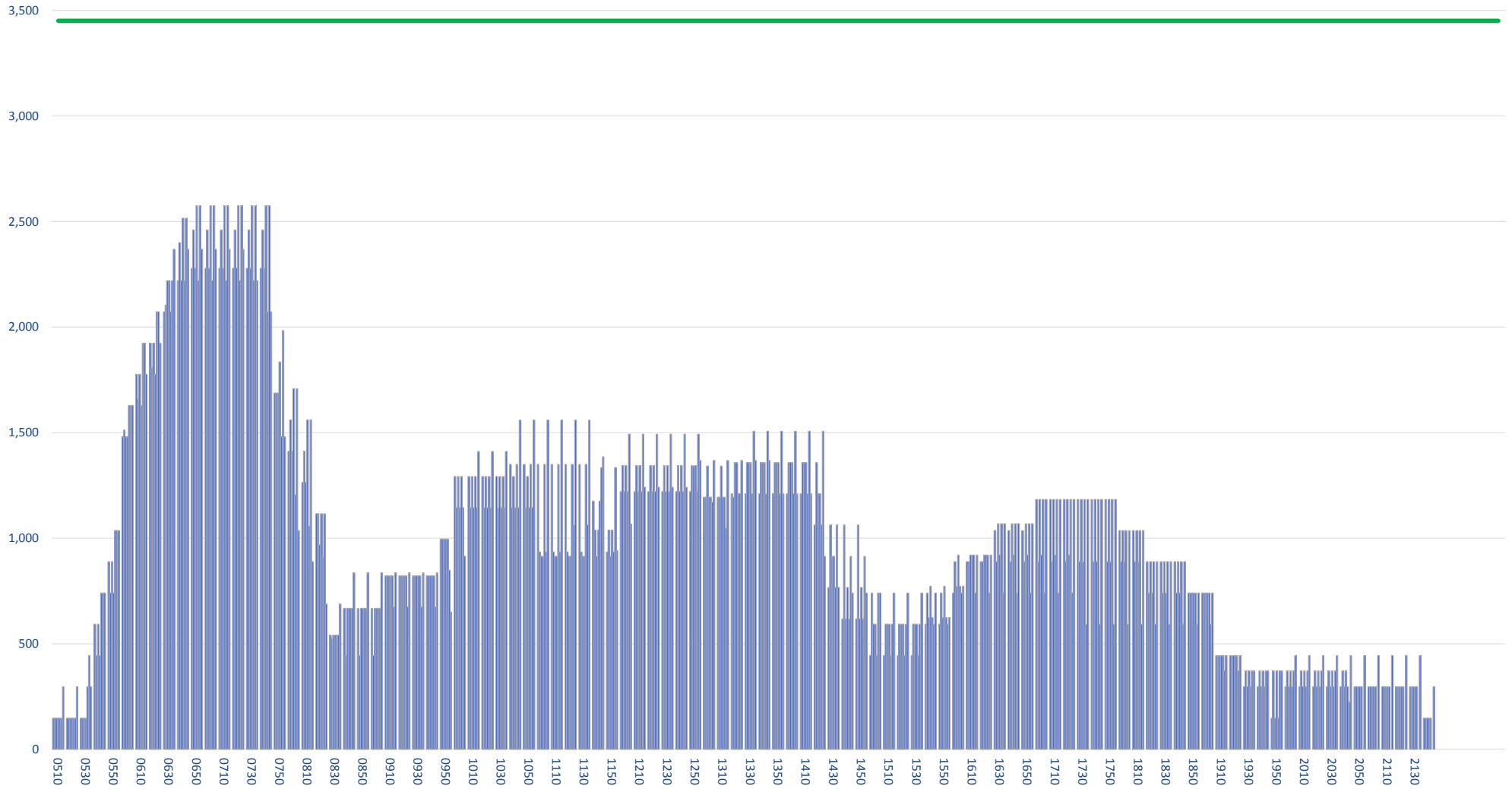
**TERMINAL 2 T60/10 ARRIVALS AS AT 19 SEPTEMBER 2012 (WEIGHTED)**

Peak Week Passengers per Hour - All times UTC



### TERMINAL 2 T60/10 DEPARTURES AS AT 19 SEPTEMBER 2012 (WEIGHTED)

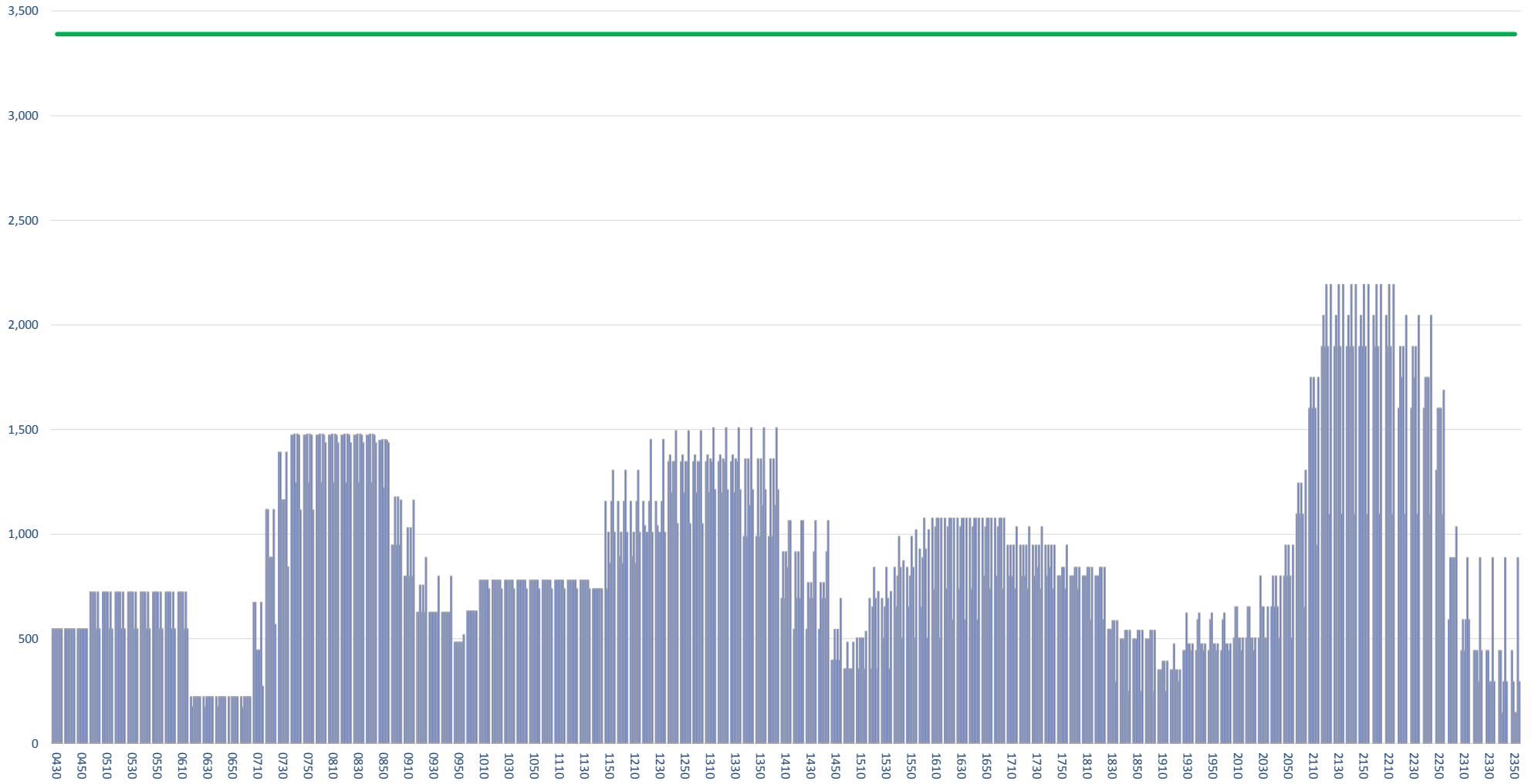
Peak Week Passengers per Hour - All times UTC





### TERMINAL 2 T60/10 ARRIVALS AS AT 19 SEPTEMBER 2012 (NON WEIGHTED)

Peak Week Passengers per Hour - All times UTC



**TERMINAL 2 T60/10 DEPARTURES AS AT 19 SEPTEMBER 2012 (NON WEIGHTED)**

Peak Week Passengers per Hour - All times UTC

