

# QUEENSTOWN INTERNATIONAL AIRPORT

## ZQN

### W16 Start of Season Report

Key Statistics	W15 Operated	W16 Start of Season	Percentage Change
Air Transport Movements	5,984	6,226	▲ 4%
Total Seats	869,742	1,014,432	▲ 17%
Seats per Passenger ATM	145	163	

Contents	Page
Airline Rank by ATM's and Seats	2
Aircraft Type Rankings by ATM's and Seats	3
Peak Week Departure Frequencies by Carrier	4
Destination Rankings by ATM's and Seats	5
Runway Peak Week Utilisation	6
Domestic Terminal Peak Week Utilisation	7
International Terminal Peak Week Utilisation	8
Total Terminal Peak Week Utilisation	9
Glossary	10

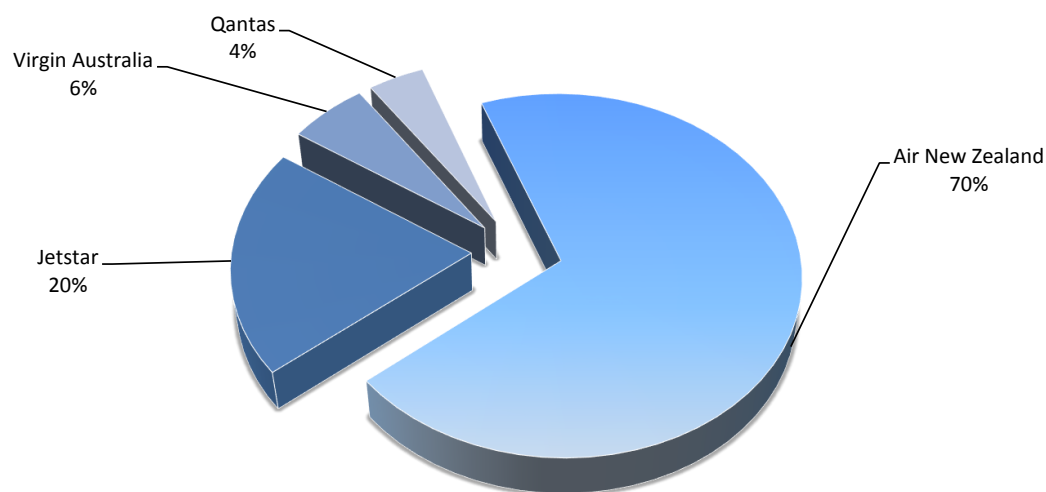
Data in this report is current as of 21 October 2016

No warranty whether expressed or implied as to the completeness, accuracy, fitness for purpose, or satisfactory quality is given by ACL regarding the information in this report, which is provided by third parties. Accordingly, ACL excludes all liability with regard to such data.

The contents of this report may not be reproduced without the written consent of ACL.

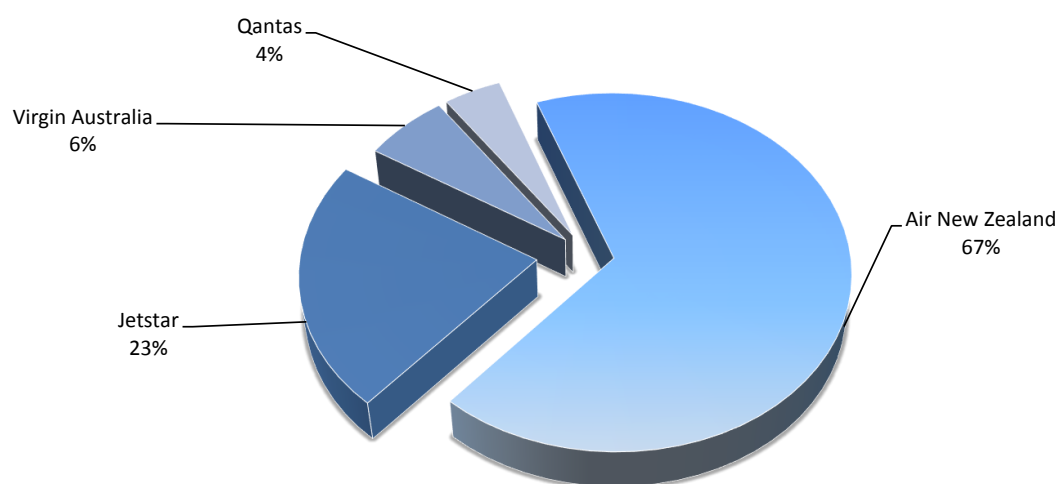
## Airlines by Air Transport Movements (ATMs)

Airline	Movements
Air New Zealand	4,340
Jetstar	1,264
Virgin Australia	364
Qantas	258



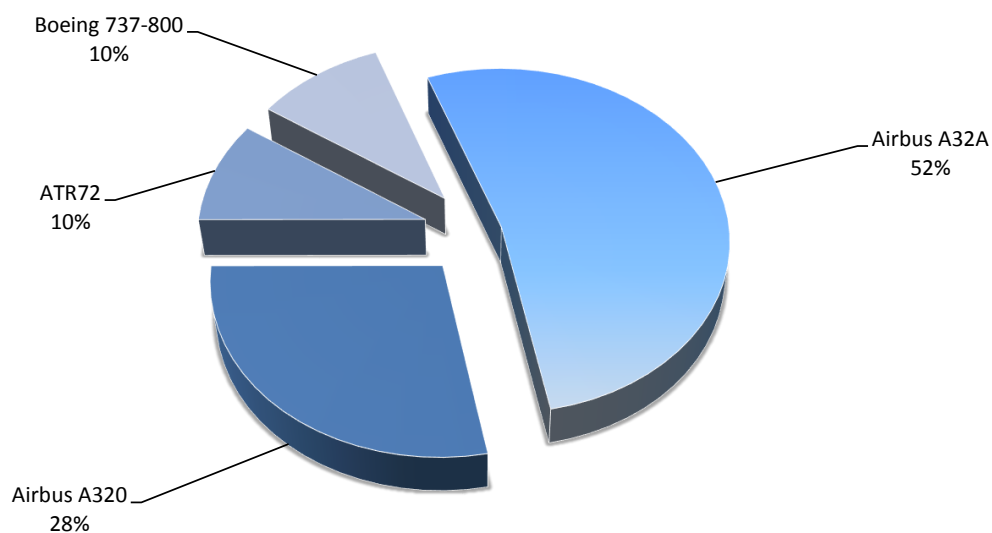
## Airlines by Seats

Airline	Seats
Air New Zealand	679,456
Jetstar	227,520
Virgin Australia	64,064
Qantas	43,392



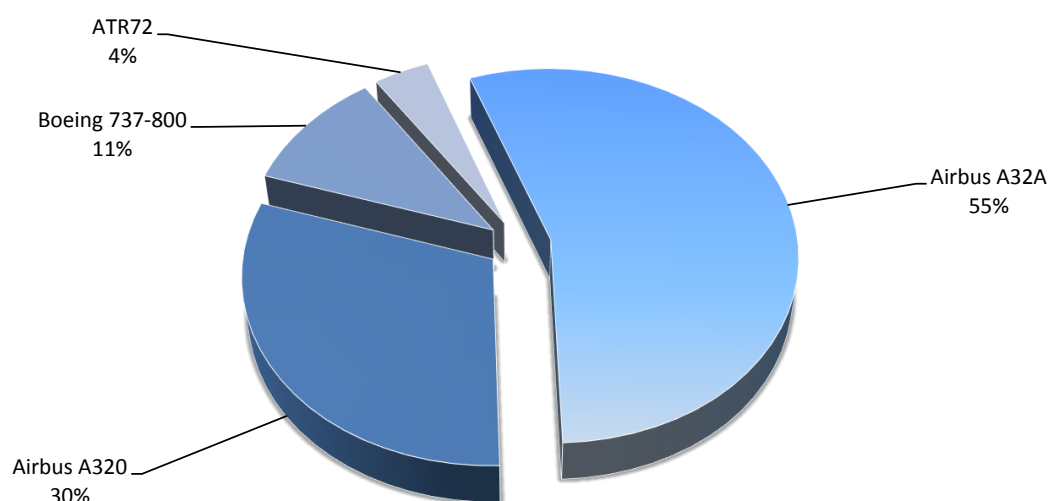
## Aircraft Types by Air Transport Movements (ATMs)

Airline	Movements
Airbus A32A	3,267
Airbus A320	1,747
ATR72	590
Boeing 737-800	622



## Aircraft Types by Seats

Airline	Seats
Airbus A32A	558,267
Airbus A320	308,589
Boeing 737-800	107,456
ATR72	40,120



## QUEENSTOWN INTERNATIONAL AIRPORT

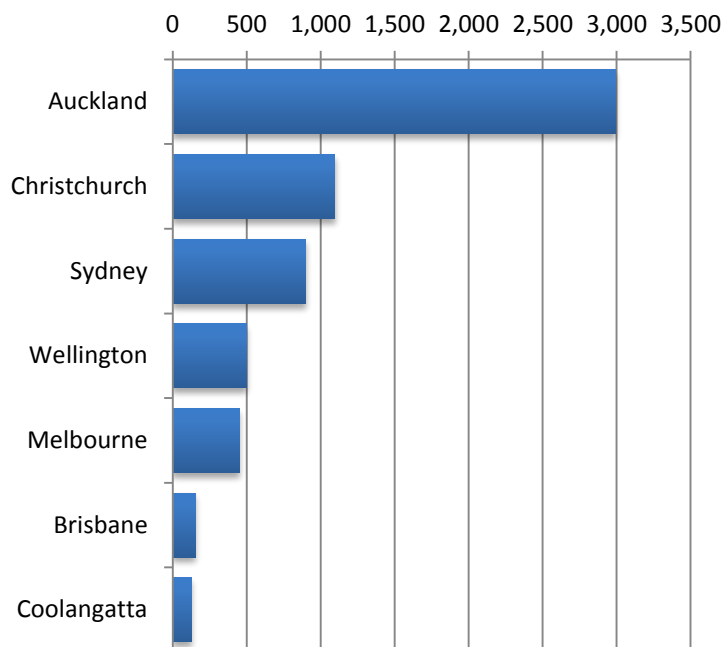
### PEAK WEEK DEPARTURE FREQUENCIES - BY CARRIER

W15 28 Dec to 03 Jan

W16 26 Dec to 01 Jan

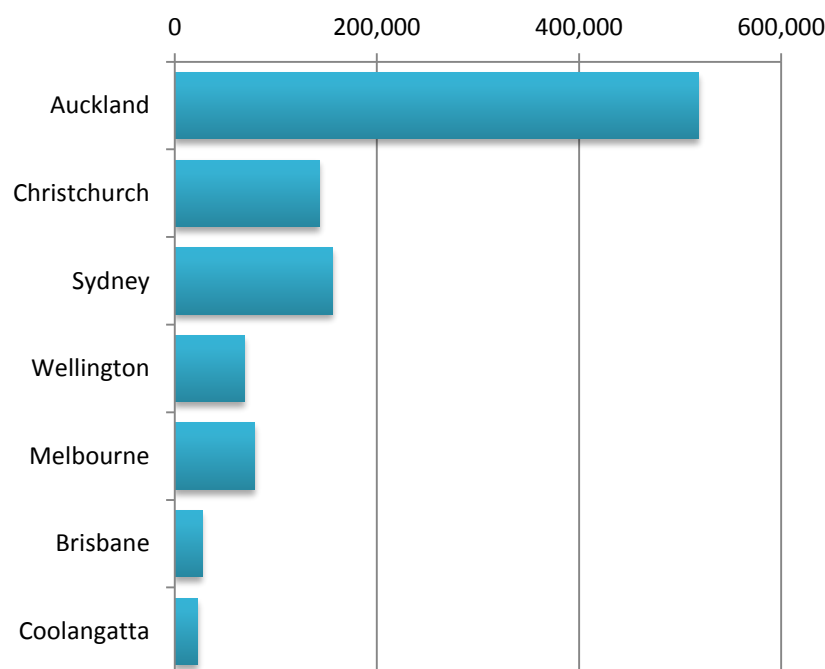
W16 26 Dec to 01 Jan				W15		W16			
OPERATOR		AIRPORT		SEATS	ATMS	SEATS	ATMS	SEATS +/-	ATMS +/-
JQ	Jetstar	AKL	Auckland International	2,700	15	2,880	16	180	1
		MEL	Melbourne	900	5	1,260	7	360	2
		OOL	Gold Coast Coolangatta	540	3	540	3	0	0
		SYD	Sydney Kingsford Smith	900	5	1,260	7	360	2
JQ Total				5,040	28	5,940	33	900	5
NZ	Air New Zealand	AKL	Auckland International	9,570	56	11,806	69	2,236	13
		CHC	Christchurch International	3,956	40	3,896	27	-60	-13
		MEL	Melbourne	1,008	6	1,176	7	168	1
		SYD	Sydney Kingsford Smith	1,008	6	1,176	7	168	1
		WLG	Wellington International	2,696	20	1,982	14	-714	-6
NZ Total				18,238	128	20,036	124	1,798	-4
QF	Qantas	SYD	Sydney Kingsford Smith	1,008	6	1,524	9	516	3
QF Total				1,008	6	1,524	9	516	3
VA	Virgin Australia	BNE	Brisbane International	880	5	1,232	7	352	2
		SYD	Sydney Kingsford Smith	704	4	880	5	176	1
VA Total				1,584	9	2,112	12	528	3

## Air Transport Movements by Destination



Destination	ATM'S
Auckland	2,995
Christchurch	1,097
Sydney	900
Wellington	501
Melbourne	453
Brisbane	154
Coolangatta	126

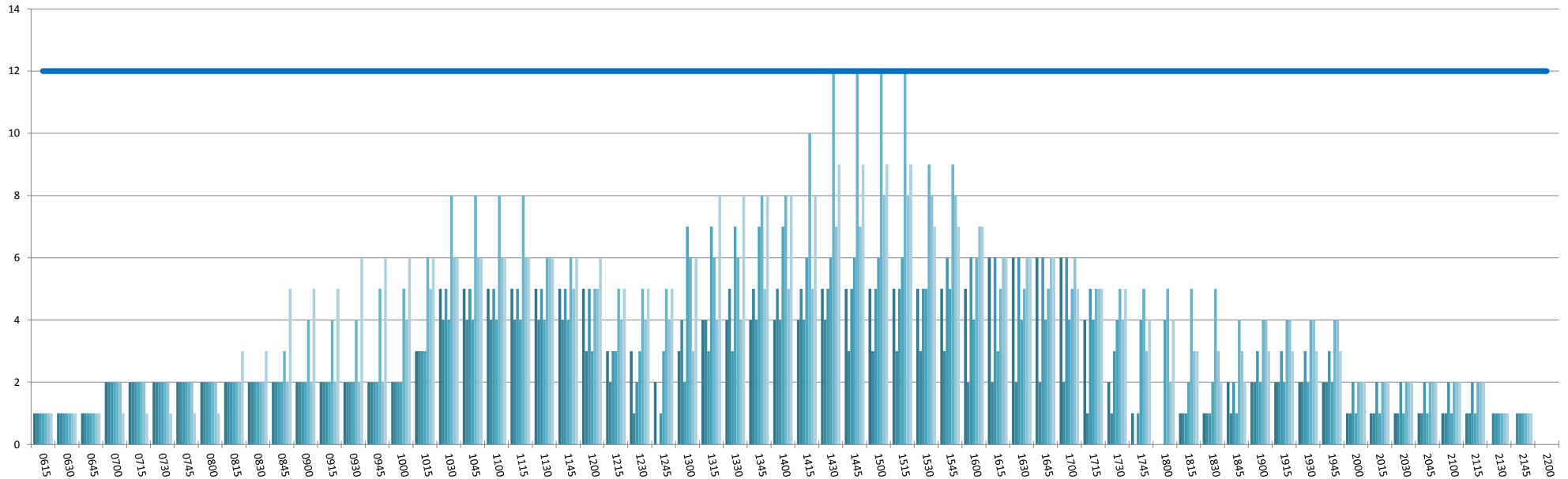
## Air Transport Seats by Destination



Destination	SEATS
Auckland	518,139
Christchurch	142,810
Sydney	155,772
Wellington	68,979
Melbourne	78,948
Brisbane	27,104
Coolangatta	22,680

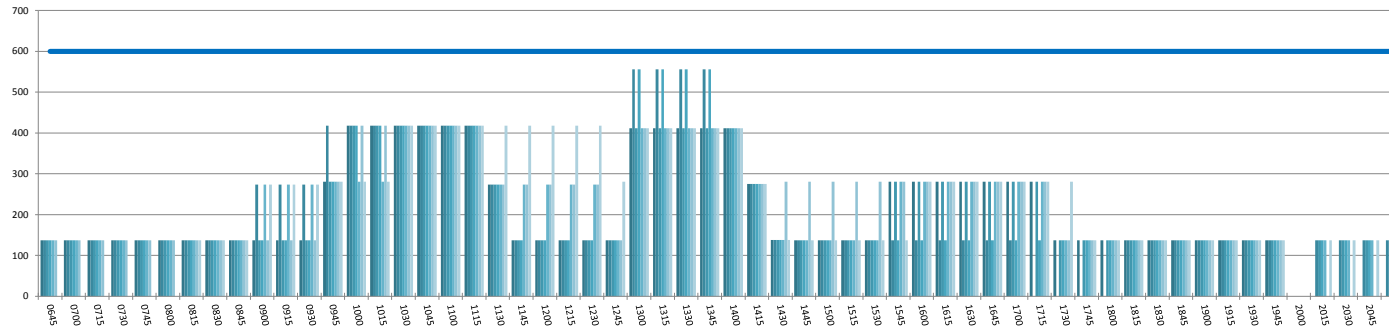
## RUNWAY TOTAL UTILISATION PER 60 MINUTES (ROLLING EVERY 15 MINUTES)

Peak Week Movements per Hour, Week 14-20 November 2016- All times LOCAL



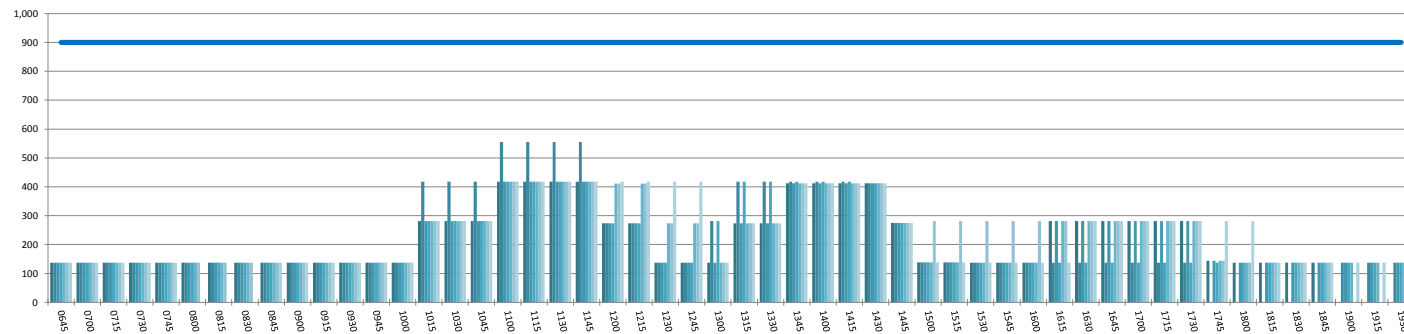
### DOMESTIC TERMINAL ARRIVALS UTILISATION PER 60 MINUTES (ROLLING EVERY 15 MINUTES)

Peak Week Movements per Hour - All times LOCAL



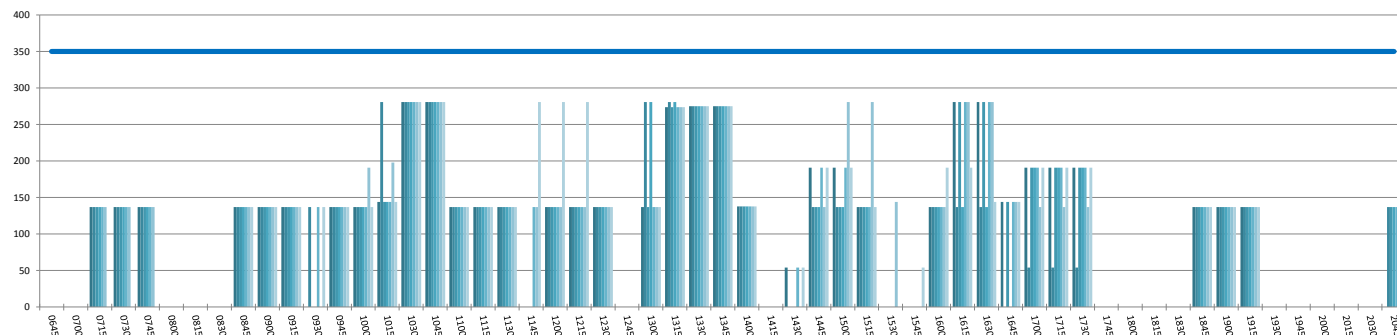
### DOMESTIC TERMINAL DEPARTURES UTILISATION PER 60 MINUTES (ROLLING EVERY 15 MINUTES)

Peak Week Movements per Hour - All times LOCAL



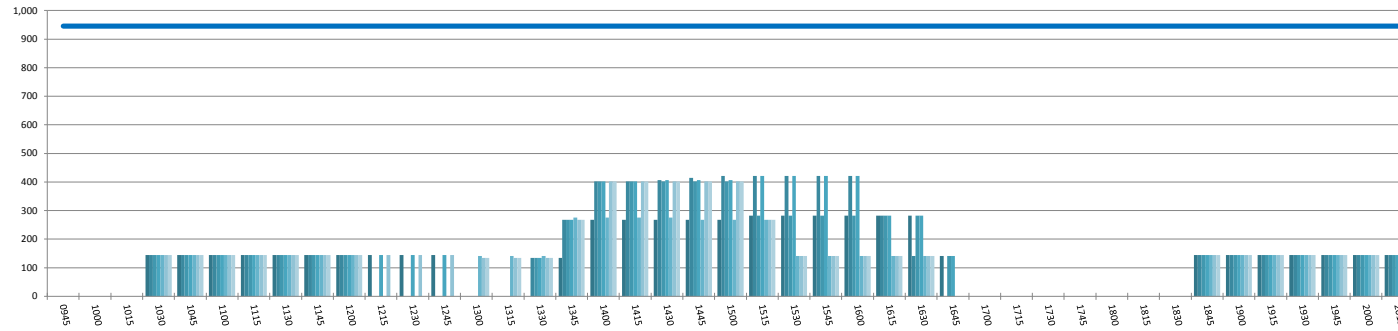
### DOMESTIC TERMINAL ARRIVALS UTILISATION PER 30 MINUTES (ROLLING EVERY 15 MINUTES)

Peak Week Movements per Hour - All times LOCAL



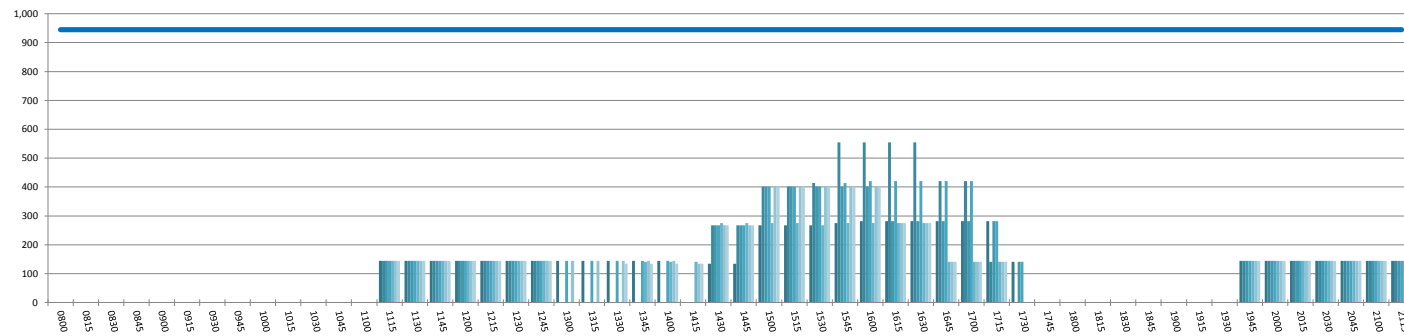
### INTERNATIONAL TERMINAL ARRIVALS UTILISATION PER 60 MINUTES (ROLLING EVERY 15 MINUTES)

Peak Week Movements per Hour - All times LOCAL



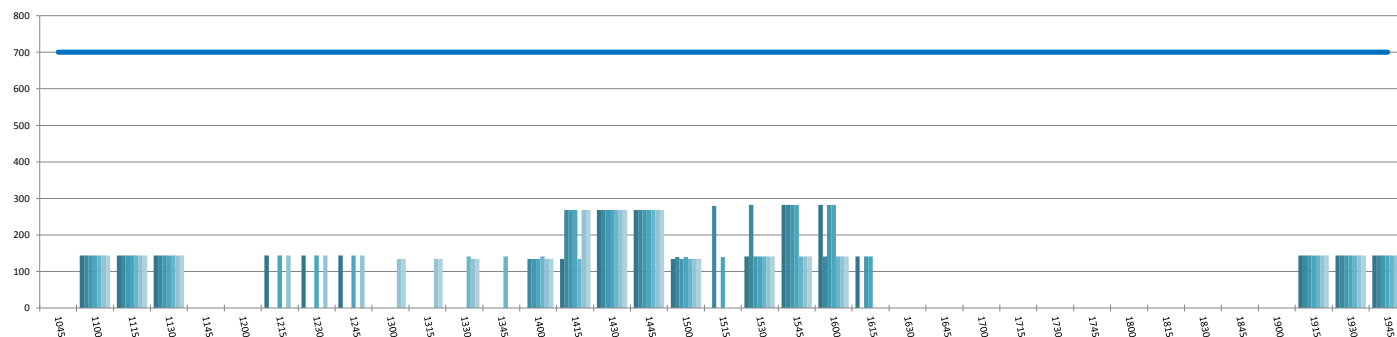
### INTERNATIONAL TERMINAL DEPARTURES UTILISATION PER 60 MINUTES (ROLLING EVERY 15 MINUTES)

Peak Week Movements per Hour - All times LOCAL



### INTERNATIONAL TERMINAL ARRIVALS UTILISATION PER 30 MINUTES (ROLLING EVERY 15 MINUTES)

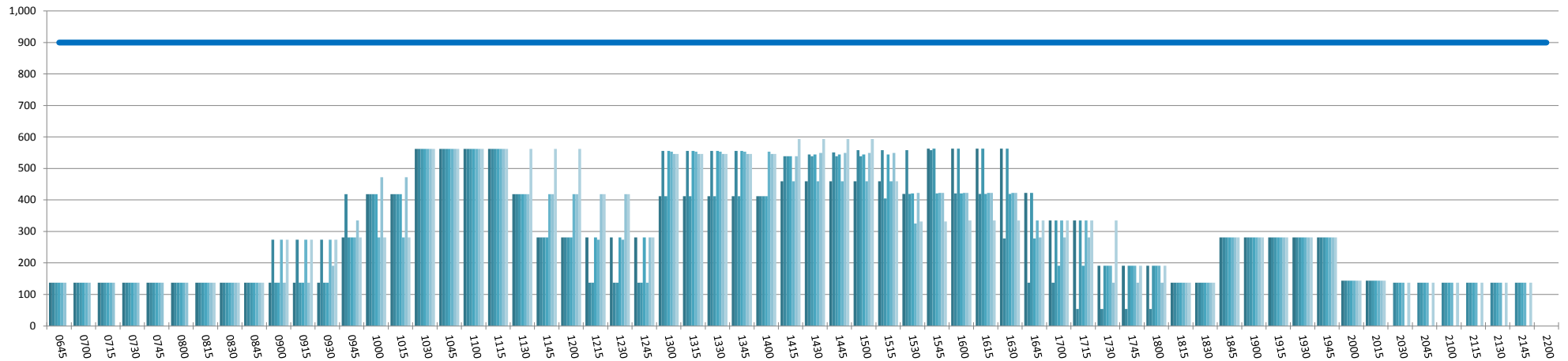
Peak Week Movements per Hour - All times LOCAL





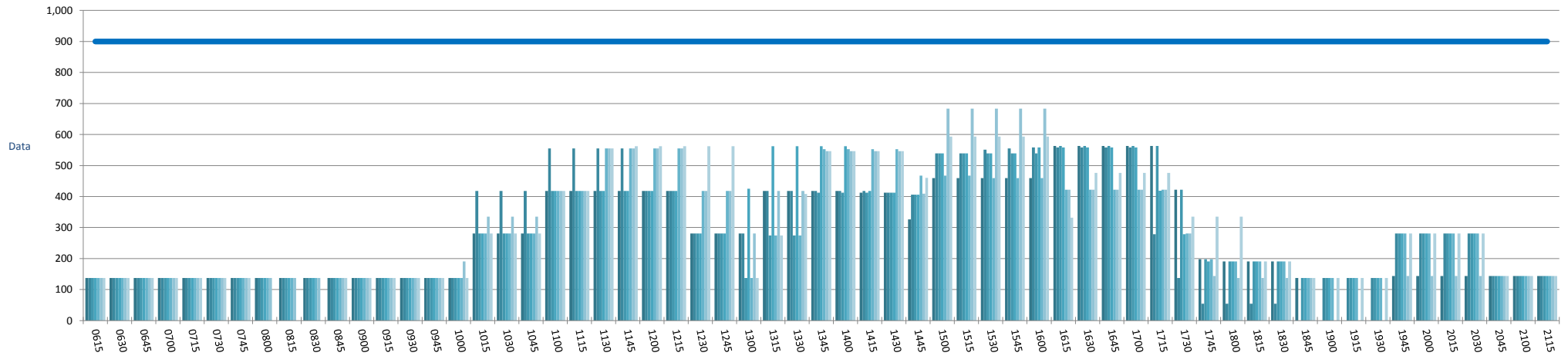
## ENTIRE TERMINAL PASSENGER ARRIVALS UTILISATION PER 60 MINUTES (ROLLING EVERY 15 MINUTES)

Peak Week Movements per Hour - All times LOCAL



## ENTIRE TERMINAL PASSENGER DEPARTURES UTILISATION PER 60 MINUTES (ROLLING EVERY 15 MINUTES)

Peak Week Movements per Hour - All times LOCAL



## GLOSSARY OF TERMS

---

<b>Air Transport Movement (ATM)</b>	A scheduled or charter passenger or freight aircraft movement.
<b>Allocation</b>	The allocation of slots such that demand is constrained to fit within declared scheduling limits.
<b>Common Travel Area (CTA)</b>	Services to or from the Republic of Ireland and the Channel Islands.
<b>Passenger ATM</b>	A scheduled or charter <u>passenger</u> aircraft movement (ie, excluding all-cargo aircraft movements).
<b>Scheduling Limits</b>	Limiting parameters declared by the Airport Operator used in the coordination process.
<b>Seats</b>	The number of seats based on the aircraft configuration advised by the airline.
<b>Peak Week</b>	The Peak Pax Week for W16 is 26 Dec 2016 to 01 Jan 2017
<b>Data Snapshot</b>	All data used for this report was as held 21 October 2016

### GUIDE TO HISTOGRAMS

---

The histograms show the pattern of traffic by time of day against the appropriate scheduling limit. Each time period consist of seven columns representing the days-of-week, Monday through Sunday.