



# WELLINGTON INTERNATIONAL AIRPORT

## WLG

### W16 Start of Season (International Traffic)

Key Statistics	W15 Operated	W16 Start of Season	Percentage Change
Air Transport Movements	2,725	2,777	▲ 1.9%
Total Seats	465,249	489,280	▲ 5.2%
Seats per Passenger ATM	171	176	

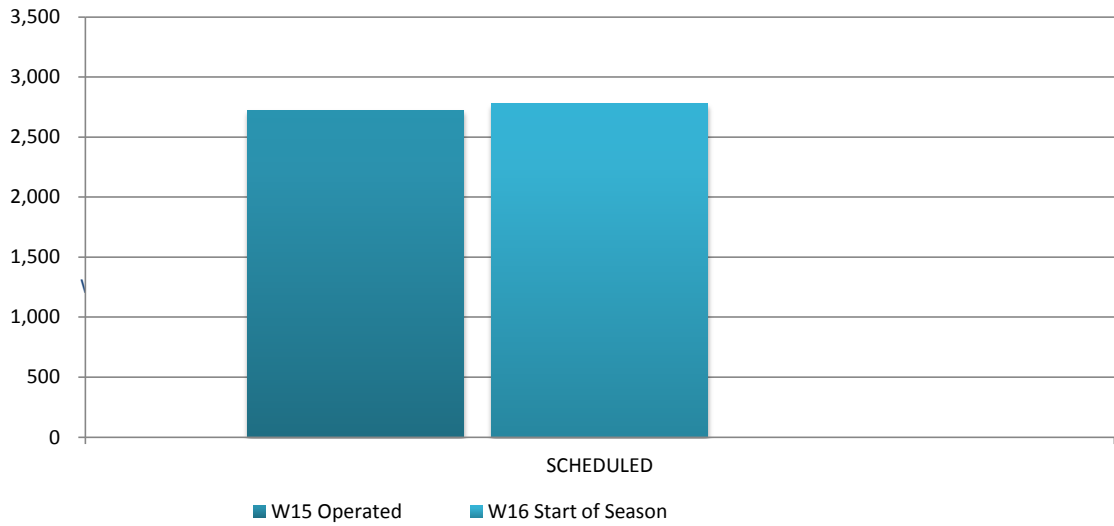
Contents	Page
Movements and Seats by Service Type	2
Peak Week Departure Frequencies by Carrier	3
Airlines by ATM's and Seats	4
Destinations by ATM's and Seats	5
Total Movements by Week	6
International Terminal - Passengers per 60 Minutes	7
Glossary	8

Data in this report is current as of 21 October 2016

No warranty whether expressed or implied as to the completeness, accuracy, fitness for purpose, or satisfactory quality is given by ACL regarding the information in this report, which is provided by third parties. Accordingly, ACL excludes all liability with regard to such data.

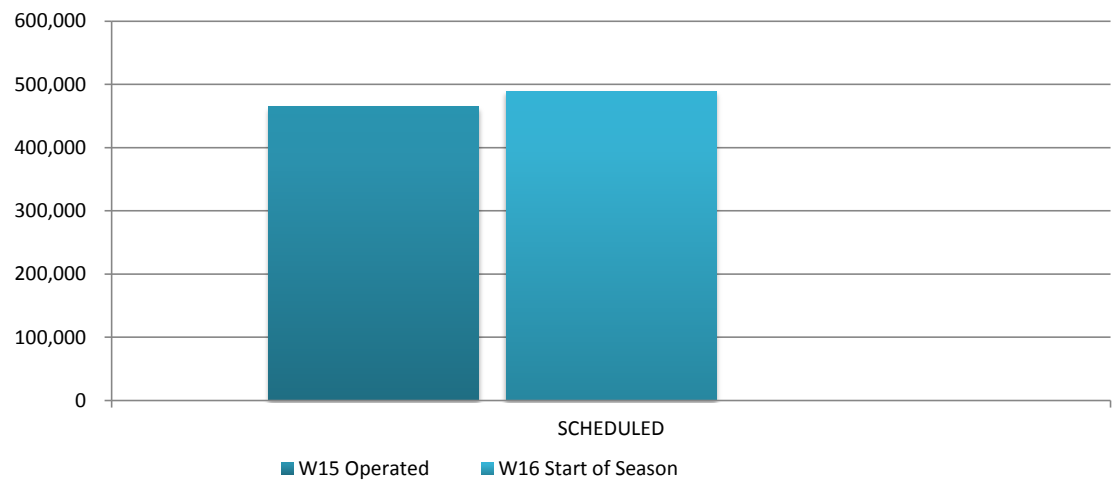
The contents of this report may not be reproduced without the written consent of ACL.

## Full Season ATMs by Service Type



	W15 Operated	W16 Start of Season	% CHANGE	
SCHEDULED	2,725	2,777	▲	1.9%
TOTAL	2,725	2,777	▲	1.9%

## Full Season Seats by Service Type



	W15 Operated	W16 Start of Season	% CHANGE	
SCHEDULED	465,249	489,280	▲	5.2%
TOTAL	465,249	489,280	▲	5.2%

## WELLINGTON INTERNATIONAL AIRPORT

### PEAK WEEK DEPARTURE FREQUENCIES - BY CARRIER

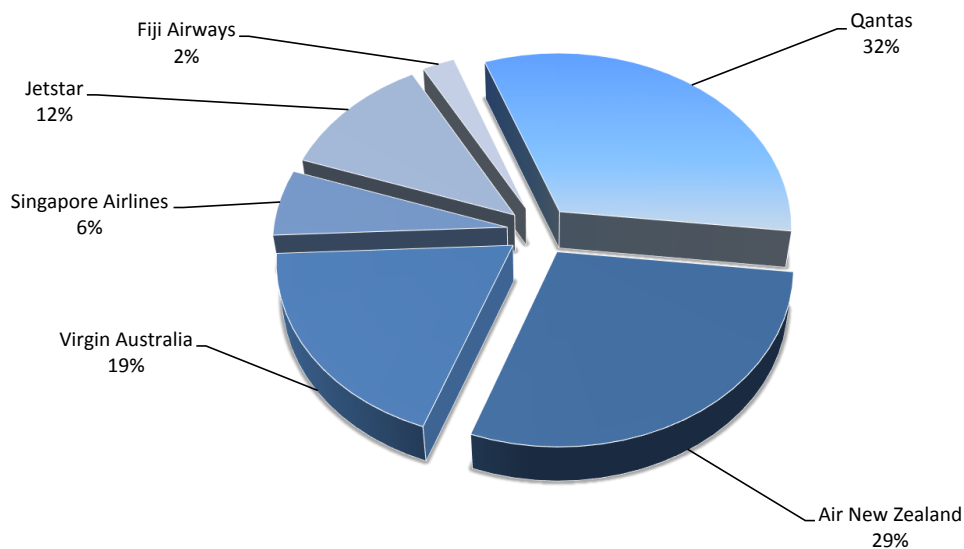
W15 21-27 Dec 15

W16 19-25 Dec 16

OPERATOR		AIRPORT		W15		W16		SEATS +/-	ATMS +/-
				SEATS	ATMS	SEATS	ATMS		
FJ	Fiji Airways	NAN	Nadi International	324	2	284	2	-40	0
FJ Total				324	2	284	2	-40	0
JQ	Jetstar	MEL	Melbourne	1,260	7	1,260	7	0	0
		OOL	Gold Coast Coolangatta	720	4	720	4	0	0
JQ Total				1,980	11	1,980	11	0	0
NZ	Air New Zealand	MEL	Melbourne	1,176	7	1,176	7	0	0
		SYD	Sydney Kingsford Smith	2,016	12	2,016	12	0	0
NZ Total				3,192	19	3,192	19	0	0
QF	Qantas	BNE	Brisbane International	504	3	0	0	-504	-3
		MEL	Melbourne	1,512	9	1,512	9	0	0
		SYD	Sydney Kingsford Smith	2,520	15	2,688	16	168	1
QF Total				4,536	27	4,200	25	-336	-2
SQ	Singapore Airlines	SIN	Singapore Changi	0	0	1,064	4	1,064	4
SQ Total				0	0	1,064	4	1,064	4
VA	Virgin Australia	BNE	Brisbane International	2,816	16	2,464	14	-352	-2
VA Total				2,816	16	2,464	14	-352	-2

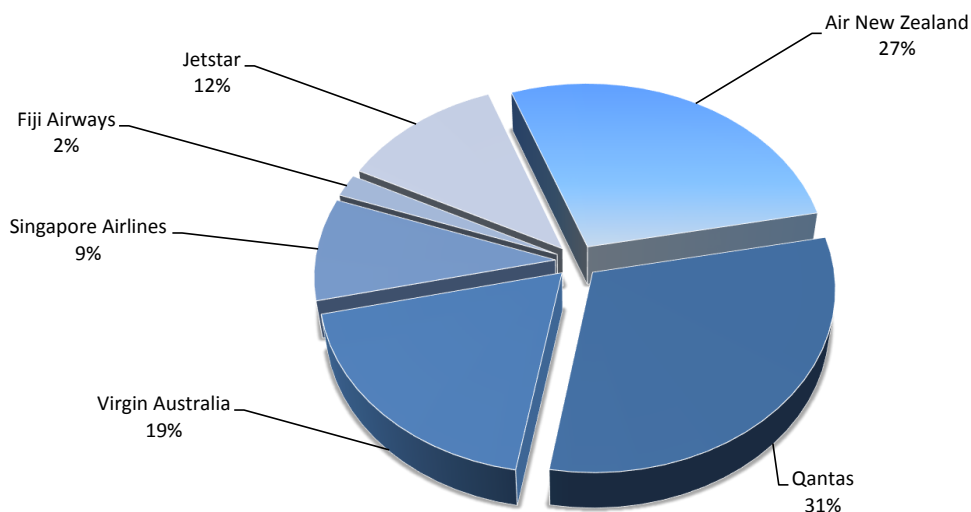
## Airlines by Air Transport Movements (ATMs)

Airline	NW16 Movements	NW15	Diff
Qantas	898	960	-6%
Air New Zealand	799	804	-1%
Virgin Australia	520	538	-3%
Singapore Airlines	168	0	
Jetstar	324	347	-7%
Fiji Airways	68	76	-11%

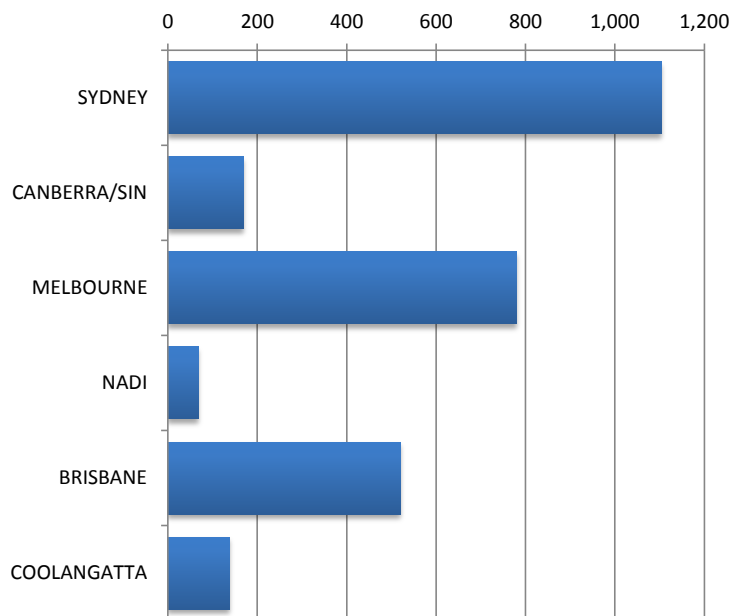


## Airlines by Air Seats

Airline	NW16 Seats	NW15	Diff
Air New Zealand	134,232	135,152	-1%
Qantas	150,864	161,326	-6%
Virgin Australia	91,520	94,584	-3%
Singapore Airlines	44,688		
Fiji Airways	9,656	11,989	-19%
Jetstar	58,320	62,198	-6%

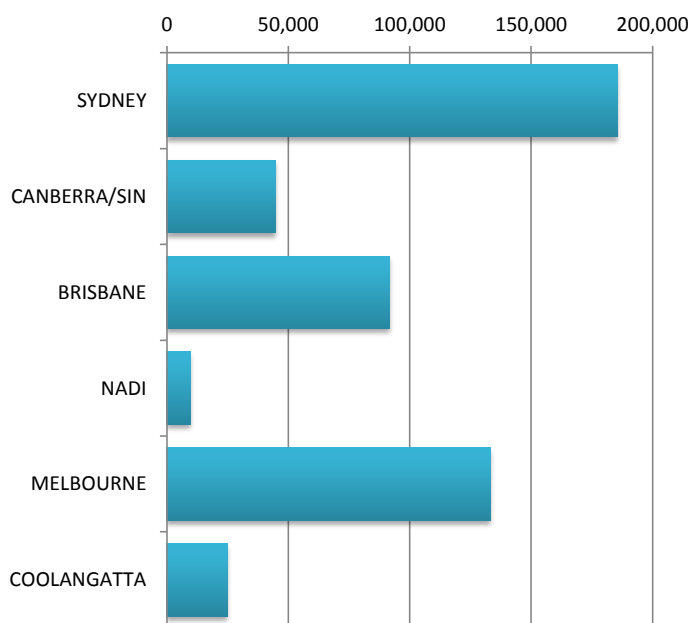


## Air Transport Movements by Destination



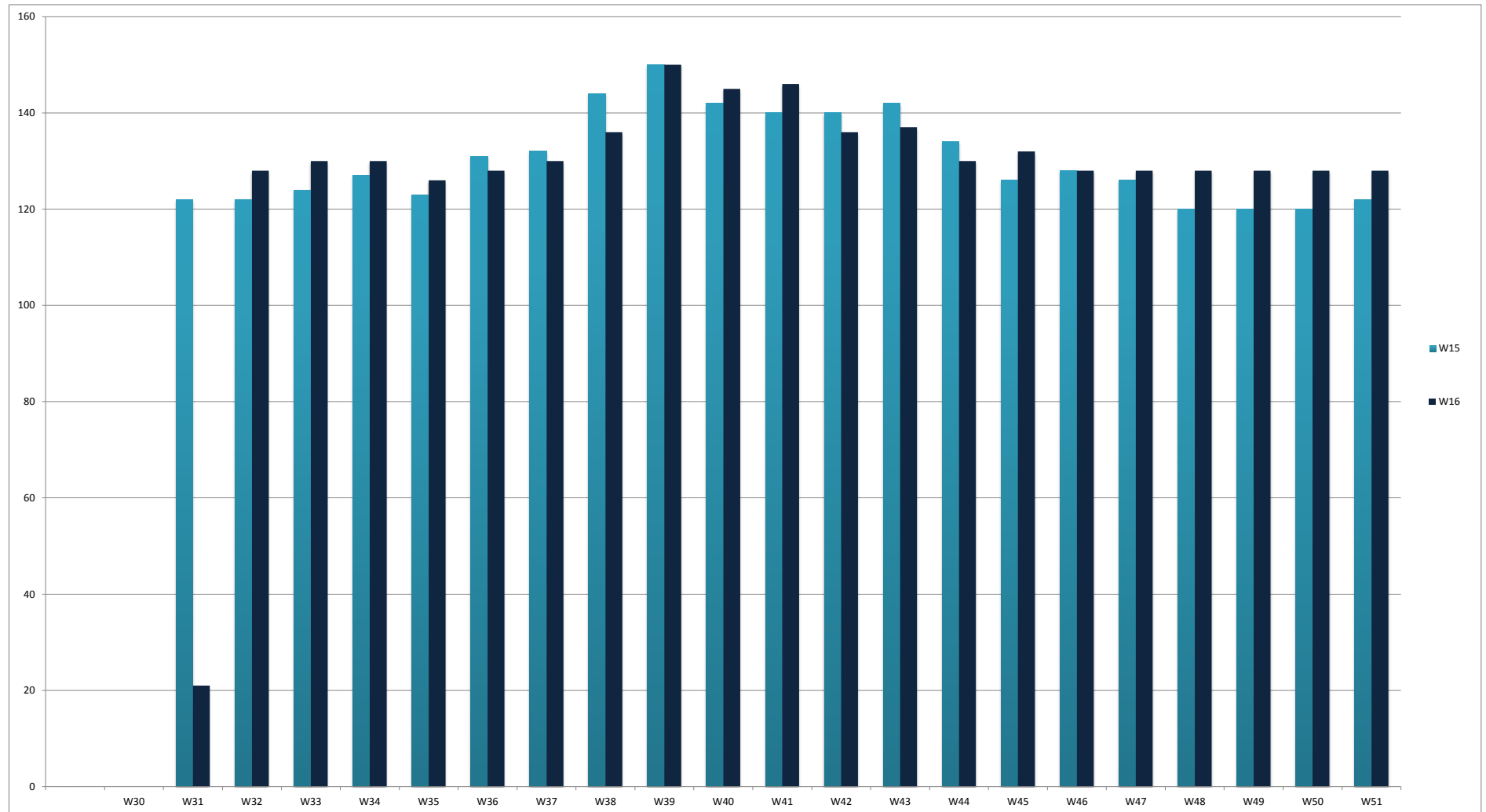
Destination	NW16 ATM'S	NW15	Diff
SYDNEY	1,104	1,102	0%
CANBERRA/SIN	168		
MELBOURNE	779	806	-3%
NADI	68	69	-1%
BRISBANE	520	603	-14%
COOLANGATTA	138	138	0%

## Air Transport Seats by Destination



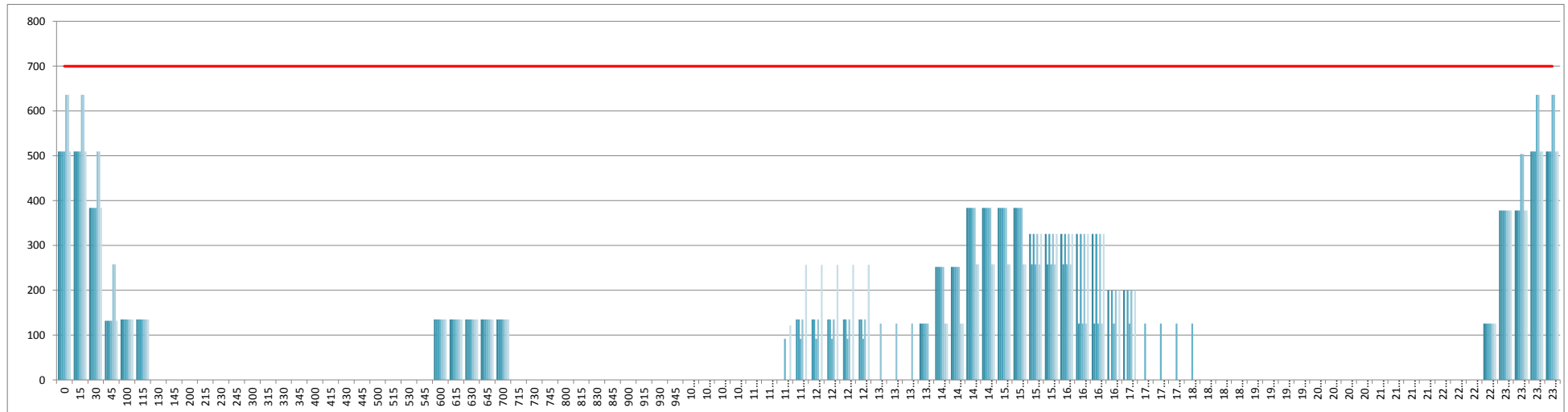
Destination	NW16 SEATS	NW15	Diff
SYDNEY	185,472	185,033	0%
CANBERRA/SIN	44,688		
BRISBANE	91,520	105,641	-13%
NADI	9,656	10,752	-10%
MELBOURNE	133,104	137,672	-3%
COOLANGATTA	24,840	24,914	0%

## Air Transport Movements by Week for W15 vs W16 Season



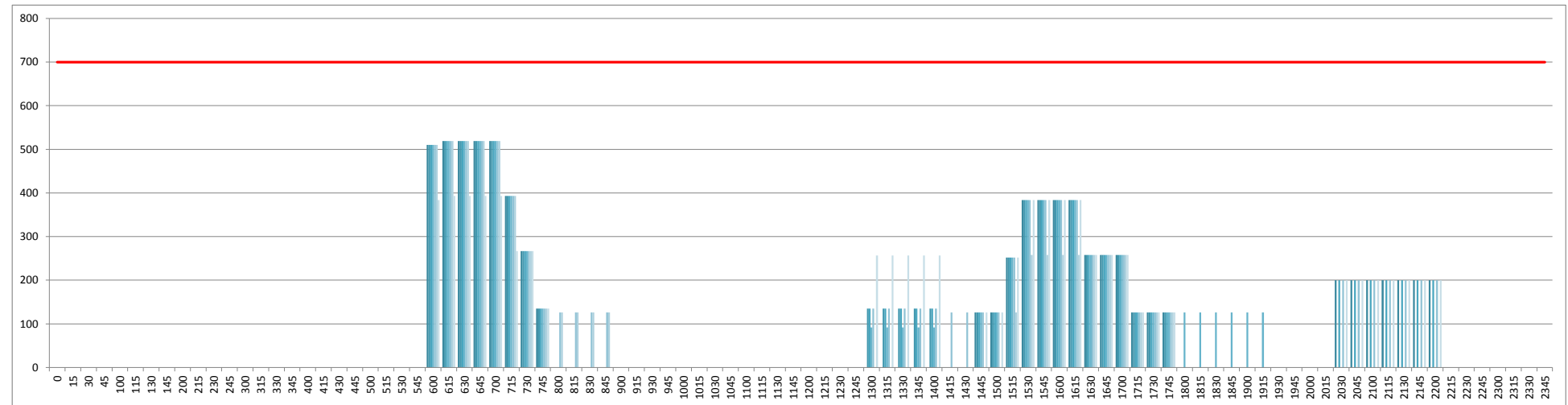
## INTERNATIONAL TERMINAL ARRIVALS (PER 60 MINUTES)

Week Movements per Hour - All times LOCAL



## INTERNATIONAL TERMINAL DEPARTURES (PER 60 MINUTES)

Week Movements per Hour - All times LOCAL



## GLOSSARY OF TERMS

---

<b>Air Transport Movement (ATM)</b>	A scheduled or charter passenger or freight aircraft movement.
<b>Allocation</b>	The allocation of slots such that demand is constrained to fit within declared scheduling limits.
<b>Passenger ATM</b>	A scheduled or charter <u>passenger</u> aircraft movement (ie, excluding all-cargo aircraft movements).
<b>Scheduling Limits</b>	Limiting parameters declared by the Airport Operator used in the coordination process.
<b>Seats</b>	The number of seats based on the aircraft configuration advised by the airline.
<b>Peak Week</b>	19 to 25 December 2016
<b>Data Snapshot</b>	All data used for this report was as held 21 October 2016

## GUIDE TO HISTOGRAMS

---

The histograms show the pattern of traffic by time of day against the appropriate scheduling limit. Each time period consist of seven columns representing the days-of-week, Monday through Sunday.