

# CHRISTCHURCH INTERNATIONAL AIRPORT CHC

## W16 Start of Season Report (International Traffic)

Key Statistics	W15 Operated	W16 Season Start	Percentage Change	
Air Transport Movements	4,625	5,188	▲	12.2%
Total Seats	887,536	1,044,016	▲	17.6%
Seats per Passenger ATM	192	201		

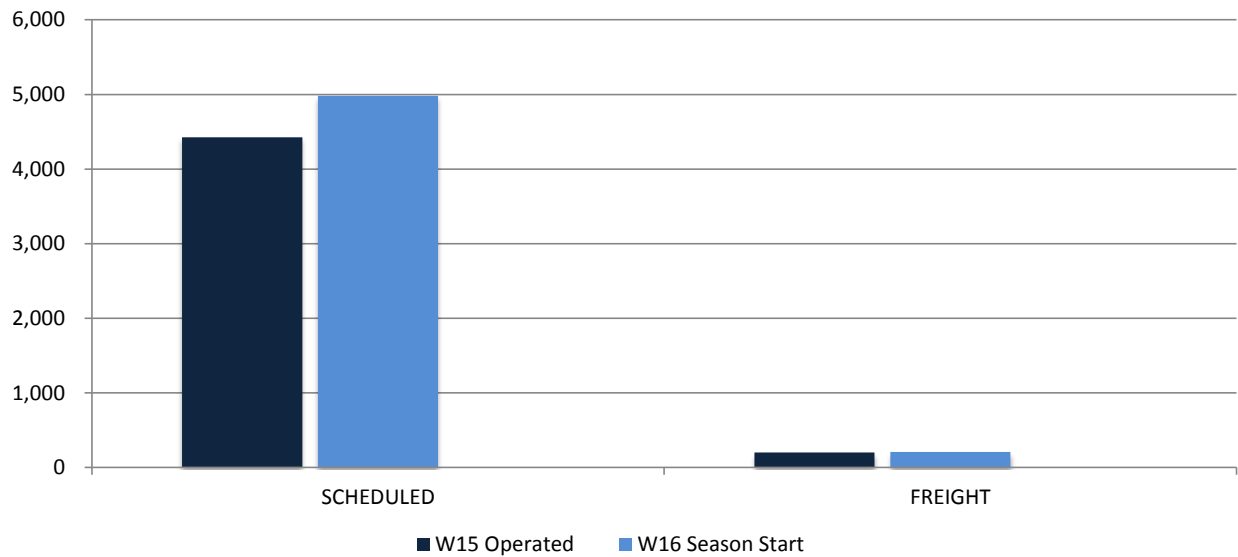
Contents	Page
Movements and Seats by Service Type	2
Peak Week Departure Frequencies by Carrier	3
Top Airlines by ATM's and Seats	4
Top Destinations by ATM's and Seats	5
International Terminal - Passengers per 60 Minutes	6
Glossary	7

Data in this report is current as of 18 October 2016

No warranty whether expressed or implied as to the completeness, accuracy, fitness for purpose, or satisfactory quality is given by ACL regarding the information in this report, which is provided by third parties. Accordingly, ACL excludes all liability with regard to such data.

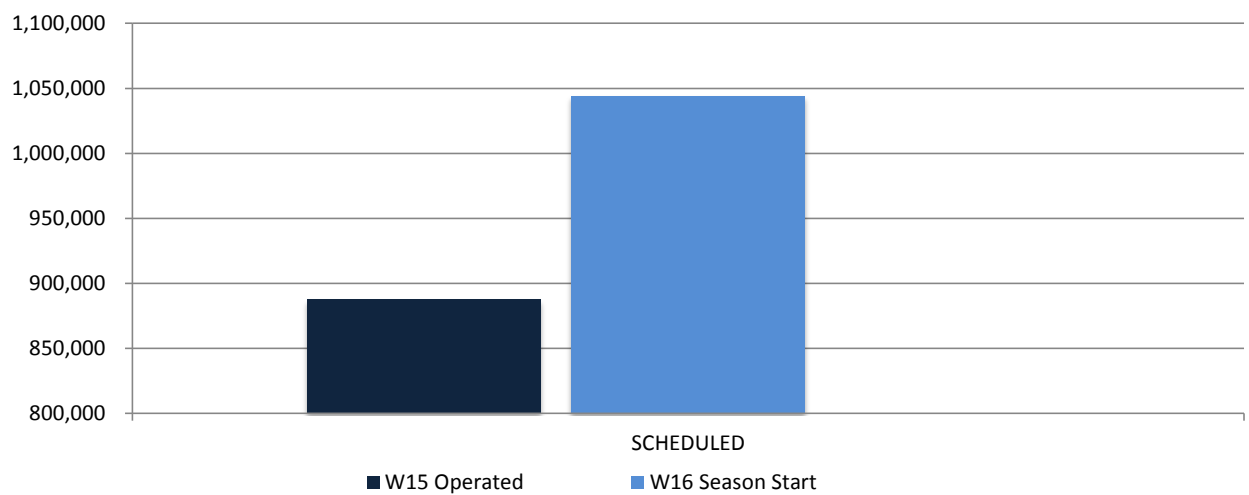
The contents of this report may not be reproduced without the written consent of ACL.

## Full Season ATMs by Service Type



	W15 Operated	W16 Season Start	Percentage Change
<b>SCHEDULED</b>	4,425	4,980	▲ 12.5%
<b>FREIGHT</b>	200	208	▲ 4.0%
<b>TOTAL</b>	4,625	5,188	▲ 12.2%

## Full Season Seats by Service Type



	W15 Operated	W16 Season Start	Percentage Change
<b>SCHEDULED</b>	887,536	1,044,016	▲ 17.6%
<b>TOTAL</b>	887,536	1,044,016	▲ 17.6%

# CHRISTCHURCH INTERNATIONAL AIRPORT

## PEAK WEEK DEPARTURE FREQUENCIES - BY CARRIER

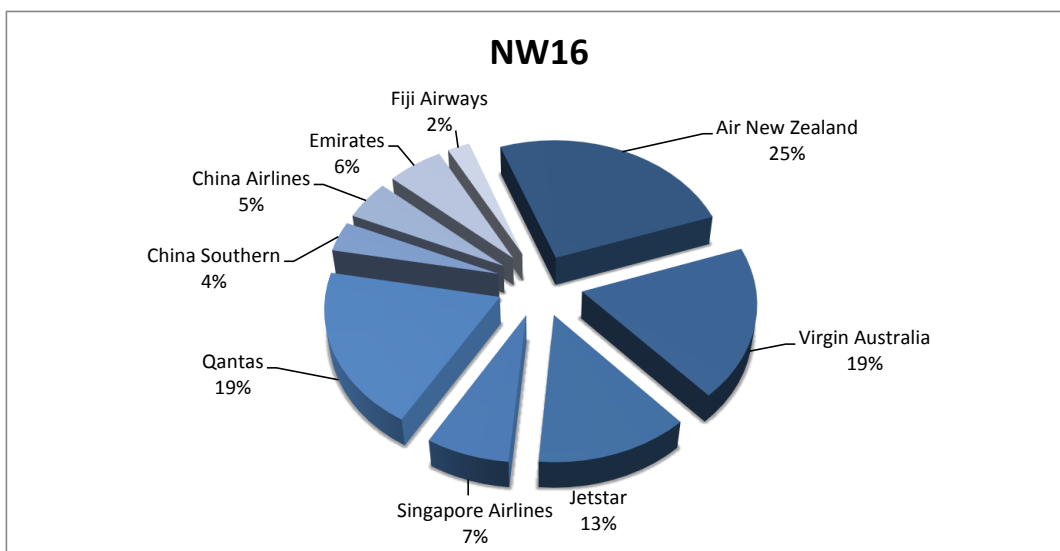
W15 04-10 Jan 2016

W16 02-08 Jan 2017

				W15		W16			
OPERATOR		AIRPORT		SEATS	ATMS	SEATS	ATMS	SEATS +/-	ATMS +/-
CI	China Airlines	TPE	Taipei Chiang Kai Shek	1,842	6	1,842	6	0	0
CI Total				1,842	6	1,842	6	0	0
CZ	China Southern Airlines	CAN	Guangzhou Baiyun	684	3	1,140	5	456	2
CZ Total				684	3	1,140	5	456	2
EK	Emirates	DXB	Dubai	2,478	7	3,612	7	1,134	0
EK Total				2,478	7	3,612	7	1,134	0
FJ	Fiji Airways	NAN	Nadi International	324	2	486	3	162	1
FJ Total				324	2	486	3	162	1
JQ	Jetstar	MEL	Melbourne	2,160	12	1,260	7	-900	-5
		OOL	Gold Coast Coolangatta	720	4	720	4	0	0
		SYD	Sydney Kingsford Smith	1,620	9	1,620	9	0	0
JQ Total				4,500	25	3,600	20	-900	-5
NZ	Air New Zealand	BNE	Brisbane International	1,344	8	1,344	8	0	0
		MEL	Melbourne	1,680	10	1,848	11	168	1
		OOL	Gold Coast Coolangatta	336	2	336	2	0	0
		PER	Perth	468	2	604	2	136	0
		SYD	Sydney Kingsford Smith	1,848	11	2,016	12	168	1
NZ Total				5,676	33	6,148	35	472	2
OZ	Asiana Airlines	ICN	Seoul Incheon Intl	0	0	295	1	295	1
OZ Total				0	0	295	1	295	1
QF	Qantas	BNE	Brisbane International	672	4	1,176	7	504	3
		MEL	Melbourne	0	0	1,176	7	1,176	7
		SYD	Sydney Kingsford Smith	1,680	15	1,176	12	-504	-3
QF Total				2,352	19	3,528	26	1,176	7
SQ	Singapore Airlines	SIN	Singapore Changi	2,710	10	2,710	10	0	0
SQ Total				2,710	10	2,710	10	0	0
VA	Virgin Australia	BNE	Brisbane International	1,584	10	1,760	10	176	0
		MEL	Melbourne	1,408	8	1,584	9	176	1
		SYD	Sydney Kingsford Smith	1,056	6	1,056	6	0	0
VA Total				4,048	24	4,400	25	352	1

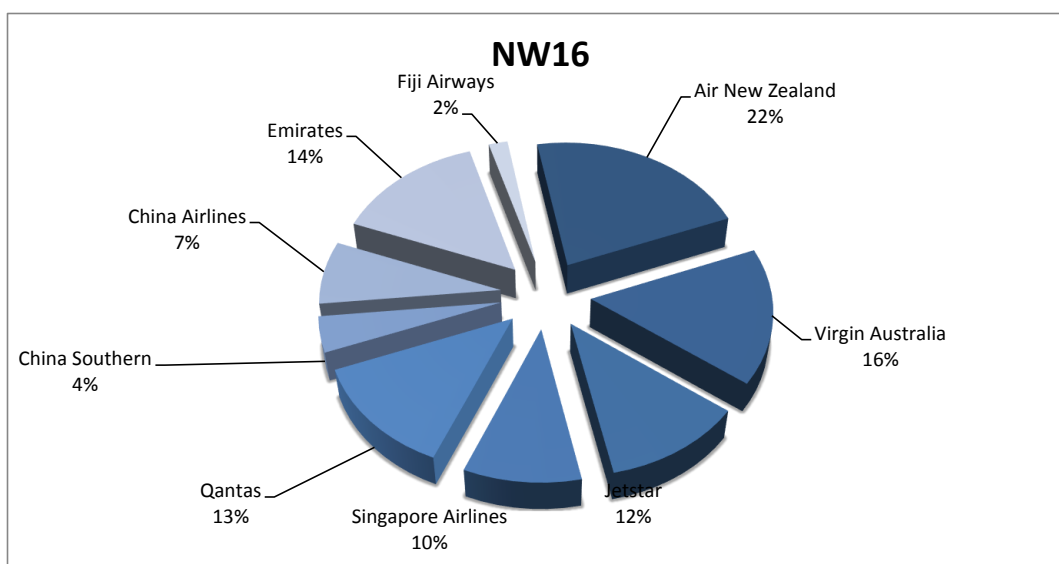
## Airlines by Air Transport Movements (ATMs)

Airline	NW15	NW16
Air New Zealand	1,270	1,301
Virgin Australia	953	967
Jetstar	728	674
Singapore Airlines	350	368
Qantas	605	1,006
China Southern	84	190
China Airlines	250	250
Emirates	294	294
Fiji Airways	84	118

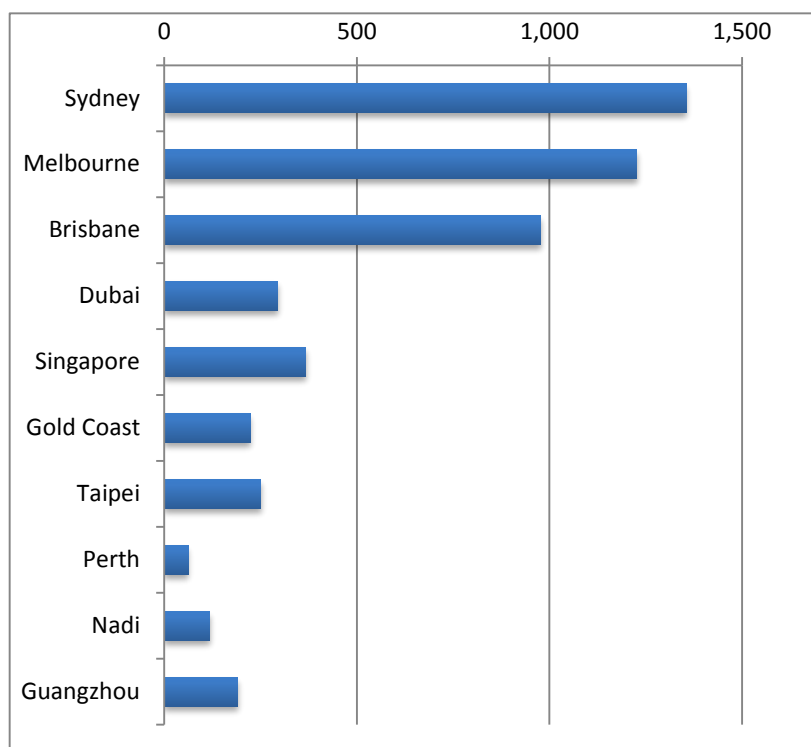


## Airlines by Air Seats

Airline	NW15	NW16
Air New Zealand	215,746	226,708
Virgin Australia	163,128	165,792
Jetstar	143,880	121,320
Singapore Airlines	103,938	99,728
Qantas	68,315	134,064
China Southern	19,152	43,320
China Airlines	76,778	76,750
Emirates	104,076	151,380
Fiji Airways	13,608	19,116

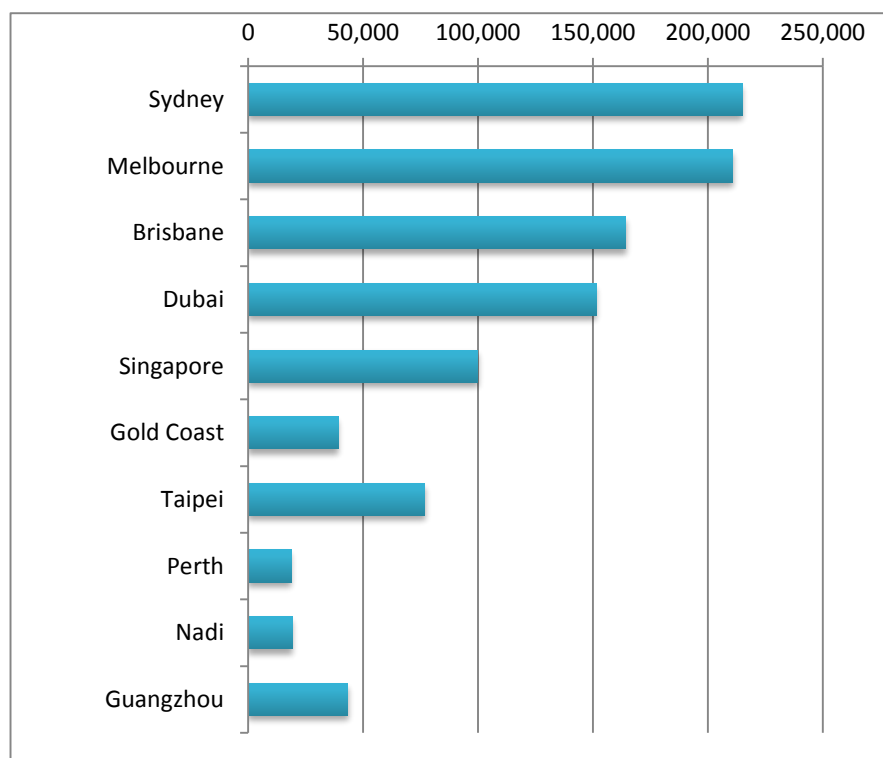


## Air Transport Movements by Destination



Destination	NW15	NW16
Sydney	1,361	1,355
Melbourne	1,049	1,227
Brisbane	765	977
Dubai	294	294
Singapore	349	368
Gold Coast	222	223
Taipei	244	250
Perth	59	62
Nadi	84	118
Guangzhou	84	190

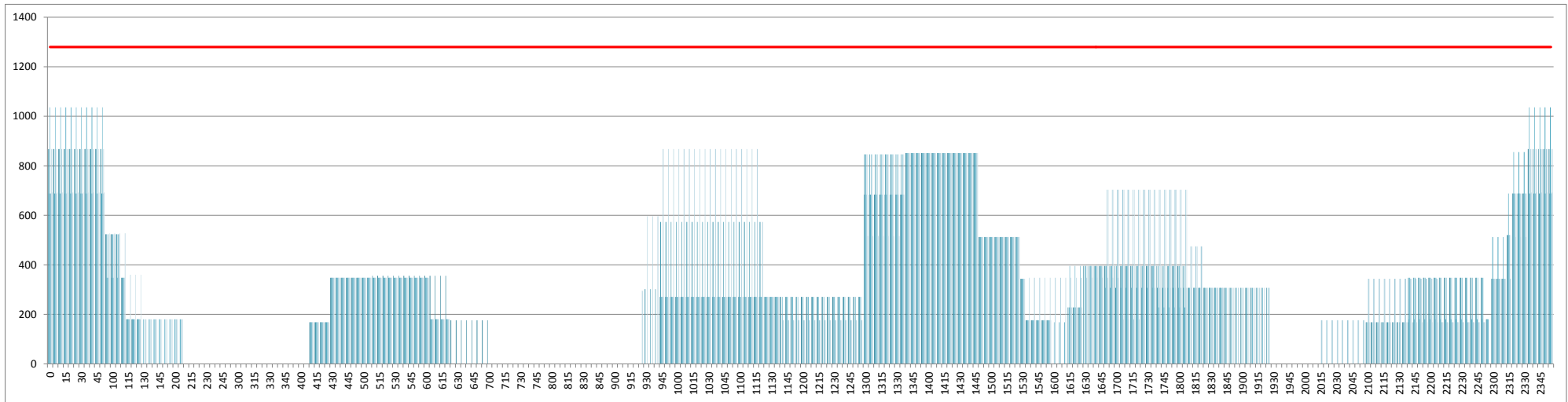
## Air Transport Seats by Destination



Destination	NW15	NW16
Sydney	217,321	214,984
Melbourne	180,711	210,748
Brisbane	128,657	164,296
Dubai	104,076	151,380
Singapore	94,704	99,728
Gold Coast	39,026	39,132
Taipei	75,020	76,750
Perth	13,849	18,724
Nadi	13,608	19,116
Guangzhou	19,152	43,320

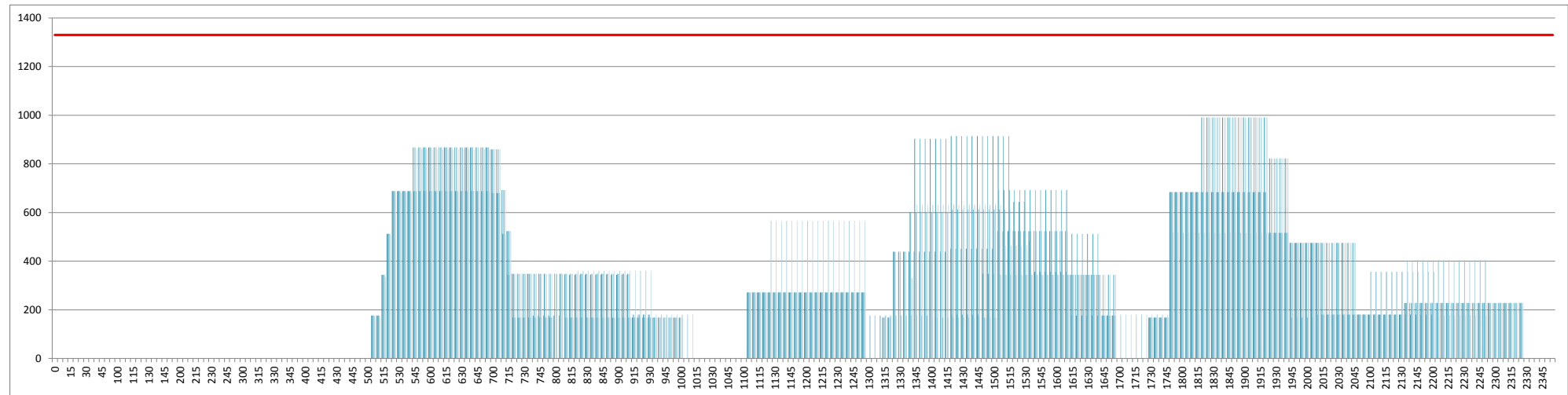
## INTERNATIONAL TERMINAL ARRIVALS (PER 60 MINUTES)

Week Movements per Hour - All times LOCAL



## INTERNATIONAL TERMINAL DEPARTURES (PER 60 MINUTES)

Week Movements per Hour - All times LOCAL



## GLOSSARY OF TERMS

---

<b>Air Transport Movement (ATM)</b>	A scheduled or charter passenger or freight aircraft movement.
<b>Allocation</b>	The allocation of slots such that demand is constrained to fit within declared scheduling limits.
<b>Common Travel Area (CTA)</b>	Services to or from the Republic of Ireland and the Channel Islands.
<b>Demand</b>	The unconstrained demand for slots, prior to any schedule adjustments.
<b>Passenger ATM</b>	A scheduled or charter <u>passenger</u> aircraft movement (ie, excluding all-cargo aircraft movements).
<b>Scheduling Limits</b>	Limiting parameters declared by the Airport Operator used in the coordination process.
<b>Seats</b>	The number of seats based on the aircraft configuration advised by the airline.
<b>Average Week</b>	Week for W15 is 02 to 08 January 2017
<b>Data Snapshot</b>	All data used for this report was as held 18 October 2016

## GUIDE TO HISTOGRAMS

---

The histograms show the pattern of traffic by time of day against the appropriate scheduling limit. Each time period consist of seven columns representing the days-of-week, Monday through Sunday.