

Stansted Airport (STN)

Summer 2016 (S16)



Start of Season Report

Report Date: Fri 11-Mar-2016

Headlines

	S16 Start	vs. S15 Start	vs. S15 End
Total Air Transport Movements (Passenger & Freight)	104,983	▲ 5.1%	▲ 5.9%
Total Passenger Air Transport Movements	96,486	▲ 3.7%	▲ 4.7%
Total Passenger Air Transport Movement Seats	17,630,999	▲ 5.4%	▲ 6.3%
Average Seats per Passenger Air Transport Movement	182.73	▲ 1.6%	▲ 1.6%
Percentage of allocated slots cleared as requested (OK)	99%		

Contents

Page	Content
2	Runway Scheduling Limits
3	ATM Allocation by Operator (Full season and Peak Week Comparison)
4	Peak Week - Allocation and Slot Adjustment Distribution by Operator
5	Significant Route Changes
6	Full Season - ATM Analysis
7	Full Season - PATM Seats Analysis
8	Full Season - Terminal Analysis
9	Full Season - Aircraft Size Analysis
10	Full Season - Seasonality
11	Peak Week - Hourly Runway Demand
12	Peak Week - Hourly Runway Allocation
13	Peak Week - Hourly Runway Allocation Comparison (S16 Start vs. S15 Start)
14	Peak Week - Hourly Runway Allocation Comparison (S16 Start vs. S15 End)
15	Peak Week Histogram - Departure Passengers (T60) - All Terminals - All Operators
16	Peak Week Histogram - Departure Passengers (T60/15) - All Terminals - All Operators
17	Peak Week Histogram - Departure Passengers (T120/15) - All Terminals - All Operators
18	Peak Week Histogram - Arrival Passengers (T60) - 1I - All Operators
19	Peak Week Histogram - Arrival Passengers (T60/15) - 1I - All Operators
20	Peak Week Histogram - Arrival Passengers (T120/15) - 1I - All Operators
21	Glossary

S15 scheduling season runs from Sun 29-Mar-2015 to Sat 24-Oct-2015 (210 days).

S16 scheduling season runs from Sun 27-Mar-2016 to Sat 29-Oct-2016 (217 days).

S15 full season data is adjusted by a factor of 1.03333 in order to directly compare against S16 full season data.

Disclaimer

No warranty whether expressed or implied as to the completeness, accuracy, fitness for purpose, or satisfactory quality is given by ACL regarding the information in this report, which is provided by third parties. Accordingly, ACL excludes all liability with regard to such data.

The contents of this report may not be reproduced without the written consent of ACL.

Peak Week - Allocation and Slot Adjustment Distribution by Operator

Schedule: S16 Start



Operator	S16 allocated ATMs	SLOT ADJUSTMENTS (MINUTES OFF REQUESTED TIME)														Requests with NO slot allocated	
		0	5	10	15	20	25	30	35	40	45	50	55	60	>60		
Aegean Airlines	-																-
Air Europa	-																-
Air Moldova	6	100.0%	0.0%	0.0%	0.0%	0.0%	0.0%	0.0%	0.0%	0.0%	0.0%	0.0%	0.0%	0.0%	0.0%	0.0%	-
Allied Air	4	100.0%	0.0%	0.0%	0.0%	0.0%	0.0%	0.0%	0.0%	0.0%	0.0%	0.0%	0.0%	0.0%	0.0%	0.0%	-
Asiana Airlines	4	100.0%	0.0%	0.0%	0.0%	0.0%	0.0%	0.0%	0.0%	0.0%	0.0%	0.0%	0.0%	0.0%	0.0%	0.0%	-
Astra Airlines	-																-
Astral Aviation	4	100.0%	0.0%	0.0%	0.0%	0.0%	0.0%	0.0%	0.0%	0.0%	0.0%	0.0%	0.0%	0.0%	0.0%	0.0%	-
Atlas Air	6	100.0%	0.0%	0.0%	0.0%	0.0%	0.0%	0.0%	0.0%	0.0%	0.0%	0.0%	0.0%	0.0%	0.0%	0.0%	-
Aurigny Air Services	16	100.0%	0.0%	0.0%	0.0%	0.0%	0.0%	0.0%	0.0%	0.0%	0.0%	0.0%	0.0%	0.0%	0.0%	0.0%	-
BH Air	2	100.0%	0.0%	0.0%	0.0%	0.0%	0.0%	0.0%	0.0%	0.0%	0.0%	0.0%	0.0%	0.0%	0.0%	0.0%	-
Blue Islands	-																-
Bright Flight	-																-
British Airways	11	100.0%	0.0%	0.0%	0.0%	0.0%	0.0%	0.0%	0.0%	0.0%	0.0%	0.0%	0.0%	0.0%	0.0%	0.0%	-
Bulgarian Air Charter	-																-
Cargo Air	-																-
CargoLogicAir	12	100.0%	0.0%	0.0%	0.0%	0.0%	0.0%	0.0%	0.0%	0.0%	0.0%	0.0%	0.0%	0.0%	0.0%	0.0%	-
Cargolux	6	100.0%	0.0%	0.0%	0.0%	0.0%	0.0%	0.0%	0.0%	0.0%	0.0%	0.0%	0.0%	0.0%	0.0%	0.0%	-
China Southern	4	100.0%	0.0%	0.0%	0.0%	0.0%	0.0%	0.0%	0.0%	0.0%	0.0%	0.0%	0.0%	0.0%	0.0%	0.0%	-
Cobalt	-																14
Corendon Airlines	-																-
EasyJet	408	99.3%	0.0%	0.0%	0.2%	0.0%	0.0%	0.2%	0.0%	0.0%	0.0%	0.0%	0.0%	0.0%	0.0%	0.2%	-
Eurowings	14	100.0%	0.0%	0.0%	0.0%	0.0%	0.0%	0.0%	0.0%	0.0%	0.0%	0.0%	0.0%	0.0%	0.0%	0.0%	-
Evelop Airlines	-																-
Federal Express	72	100.0%	0.0%	0.0%	0.0%	0.0%	0.0%	0.0%	0.0%	0.0%	0.0%	0.0%	0.0%	0.0%	0.0%	0.0%	-
Flybe	36	100.0%	0.0%	0.0%	0.0%	0.0%	0.0%	0.0%	0.0%	0.0%	0.0%	0.0%	0.0%	0.0%	0.0%	0.0%	-
Freebird Airlines	2	100.0%	0.0%	0.0%	0.0%	0.0%	0.0%	0.0%	0.0%	0.0%	0.0%	0.0%	0.0%	0.0%	0.0%	0.0%	-
Germania	-																-
Germanwings	52	100.0%	0.0%	0.0%	0.0%	0.0%	0.0%	0.0%	0.0%	0.0%	0.0%	0.0%	0.0%	0.0%	0.0%	0.0%	-
Jet2.com	20	100.0%	0.0%	0.0%	0.0%	0.0%	0.0%	0.0%	0.0%	0.0%	0.0%	0.0%	0.0%	0.0%	0.0%	0.0%	-
Loganair	-																-
Martinair	6	100.0%	0.0%	0.0%	0.0%	0.0%	0.0%	0.0%	0.0%	0.0%	0.0%	0.0%	0.0%	0.0%	0.0%	0.0%	-
MNG Airlines	-																-
Onur Air	14	100.0%	0.0%	0.0%	0.0%	0.0%	0.0%	0.0%	0.0%	0.0%	0.0%	0.0%	0.0%	0.0%	0.0%	0.0%	-
Pegasus Airlines	42	78.6%	4.8%	0.0%	0.0%	0.0%	0.0%	0.0%	0.0%	0.0%	0.0%	0.0%	0.0%	0.0%	0.0%	0.0%	-
Qatar Airways	18	88.9%	0.0%	0.0%	5.6%	0.0%	5.6%	0.0%	0.0%	0.0%	0.0%	0.0%	0.0%	0.0%	0.0%	0.0%	-
Ryanair	2,486	97.9%	0.2%	0.0%	0.3%	0.0%	0.2%	0.2%	0.1%	0.3%	0.0%	0.0%	0.1%	0.1%	0.4%	0.4%	-
Safari Express Cargo	2	50.0%	0.0%	0.0%	0.0%	0.0%	50.0%	0.0%	0.0%	0.0%	0.0%	0.0%	0.0%	0.0%	0.0%	0.0%	-
Silk Way Airlines	4	100.0%	0.0%	0.0%	0.0%	0.0%	0.0%	0.0%	0.0%	0.0%	0.0%	0.0%	0.0%	0.0%	0.0%	0.0%	-
Silk Way West Airlines	-																-
Small Planet Airlines	-																-
STP Airways	4	100.0%	0.0%	0.0%	0.0%	0.0%	0.0%	0.0%	0.0%	0.0%	0.0%	0.0%	0.0%	0.0%	0.0%	0.0%	-
Tailwind Airlines	-																-
Thomas Cook (UK)	111	96.4%	0.0%	0.0%	0.0%	0.0%	0.0%	0.0%	0.9%	0.0%	0.0%	0.9%	0.9%	0.0%	0.9%	-	
Thomson Airways	62	96.8%	0.0%	1.6%	0.0%	0.0%	0.0%	0.0%	0.0%	0.0%	0.0%	0.0%	0.0%	0.0%	0.0%	-	
Titan Airways	48	97.9%	0.0%	0.0%	0.0%	0.0%	0.0%	0.0%	0.0%	0.0%	0.0%	0.0%	0.0%	2.1%	0.0%	-	
TNT Airways	10	100.0%	0.0%	0.0%	0.0%	0.0%	0.0%	0.0%	0.0%	0.0%	0.0%	0.0%	0.0%	0.0%	0.0%	-	
Turkish Airlines	6	100.0%	0.0%	0.0%	0.0%	0.0%	0.0%	0.0%	0.0%	0.0%	0.0%	0.0%	0.0%	0.0%	0.0%	-	
UPS Airlines	28	100.0%	0.0%	0.0%	0.0%	0.0%	0.0%	0.0%	0.0%	0.0%	0.0%	0.0%	0.0%	0.0%	0.0%	-	
West Atlantic Cargo	33	100.0%	0.0%	0.0%	0.0%	0.0%	0.0%	0.0%	0.0%	0.0%	0.0%	0.0%	0.0%	0.0%	0.0%	-	
TOTAL	3,553	97.9%	0.2%	0.1%	0.3%	0.0%	0.2%	0.1%	0.1%	0.2%	0.0%	0.1%	0.1%	0.1%	0.3%	0.3%	14

Operators with 0 'allocated ATMs' and 0 'Requests with NO slot allocated' in S16, are included in this list due to having slots allocated in either S15 Start or S15 End schedules.

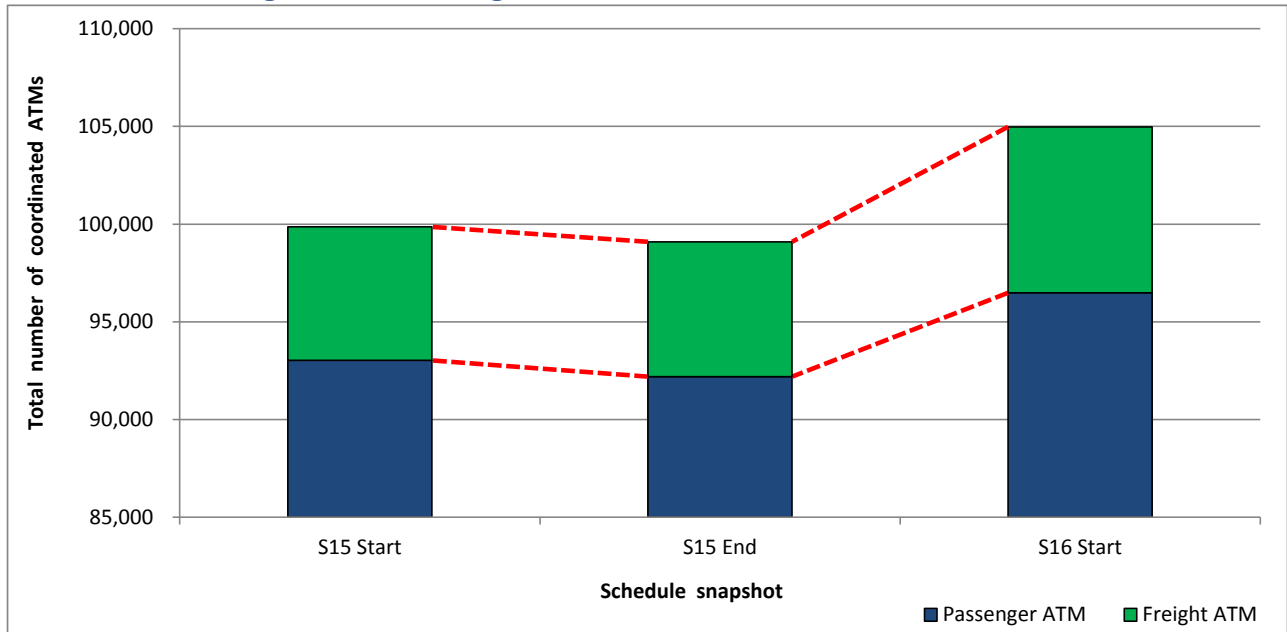
Significant Route Changes

Operator	Category	Description of change from S15 schedule to S16 schedule
BA Cityflyer	NEW	Services to AGP, FAO, IBZ, PMI, TXL
EasyJet	CHANGE	Increased services to AMS, BFS and EDI
EasyJet	CANCELLED	Services to CPH and RAK
Eurowings	NEW	Services to VIE
Flybe	CANCELLED	Services to IOM and NCL
Germanwings	CANCELLED	Services to DUS
Onur Air	NEW	Services to IST
Pegasus Airlines	CHANGE	Increased services to SAW
Pegasus Airlines	CANCELLED	Services to BJV and ECN
Ryanair	NEW	Services to MXP, PLQ, VRN
Ryanair	CANCELLED	Services to HAU, KUN, RDZ, SFT, SXB, TMP
STP Airways	NEW	Services to TMS
Thomas Cook (UK)	NEW	Services to BOJ, LCA, LEI, REU

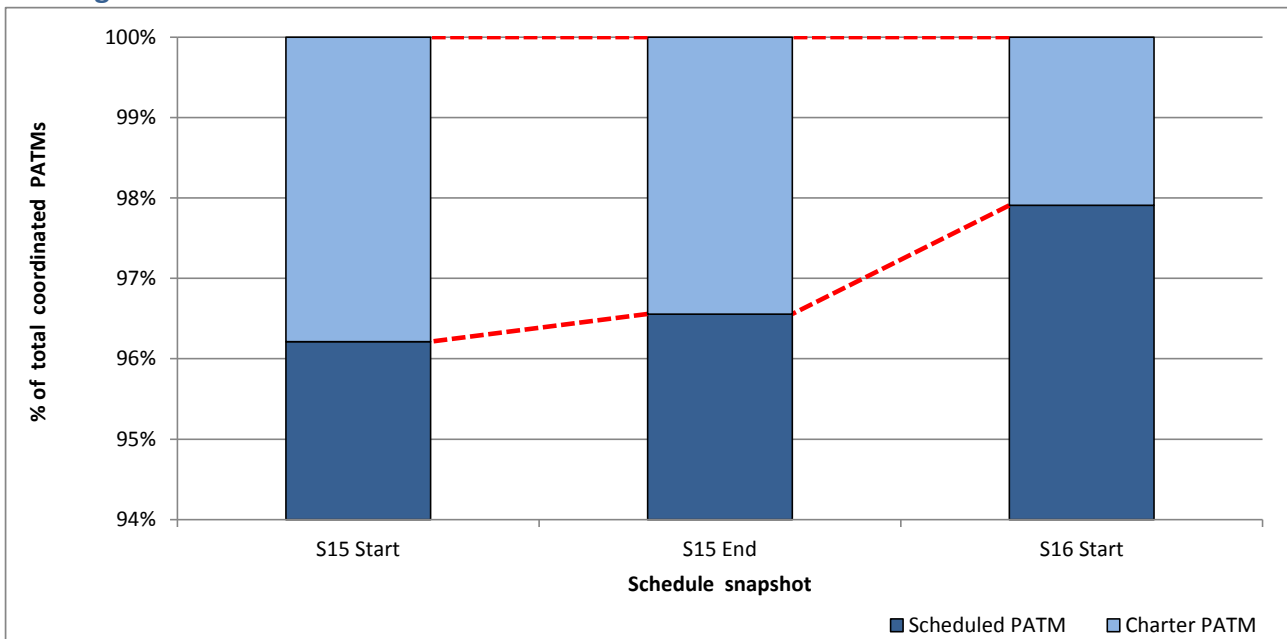
Full Season - ATM Analysis



Total ATMs: Passenger ATMs vs. Freight ATMs



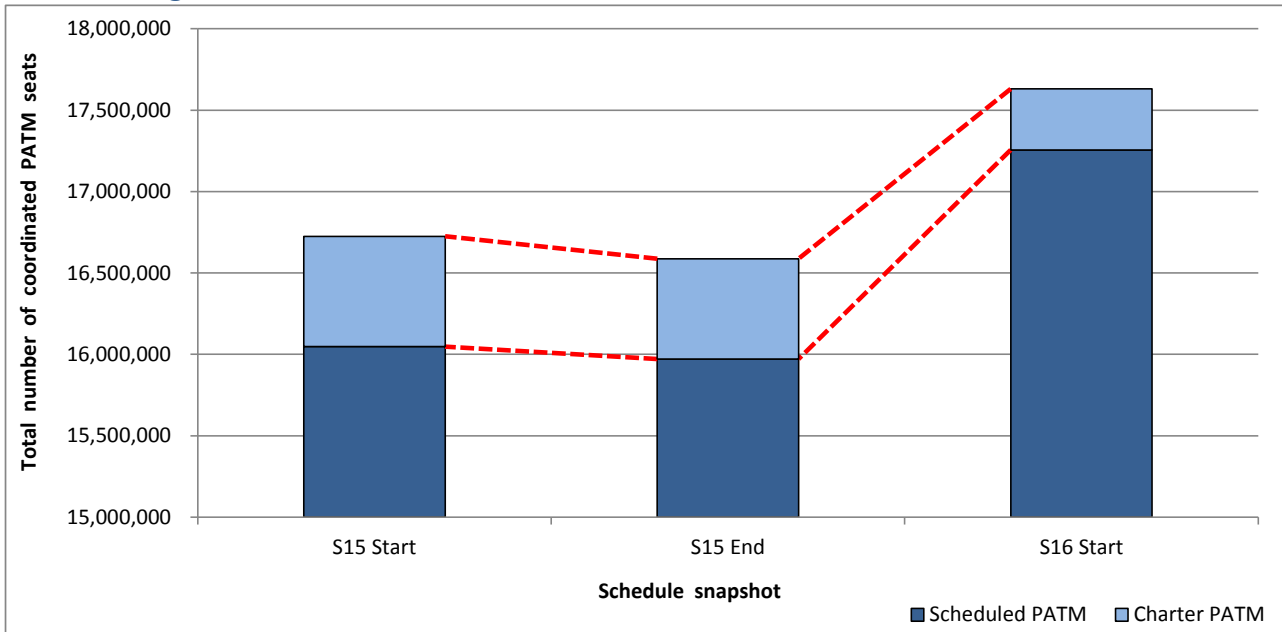
Passenger ATMs: Scheduled vs. Charter



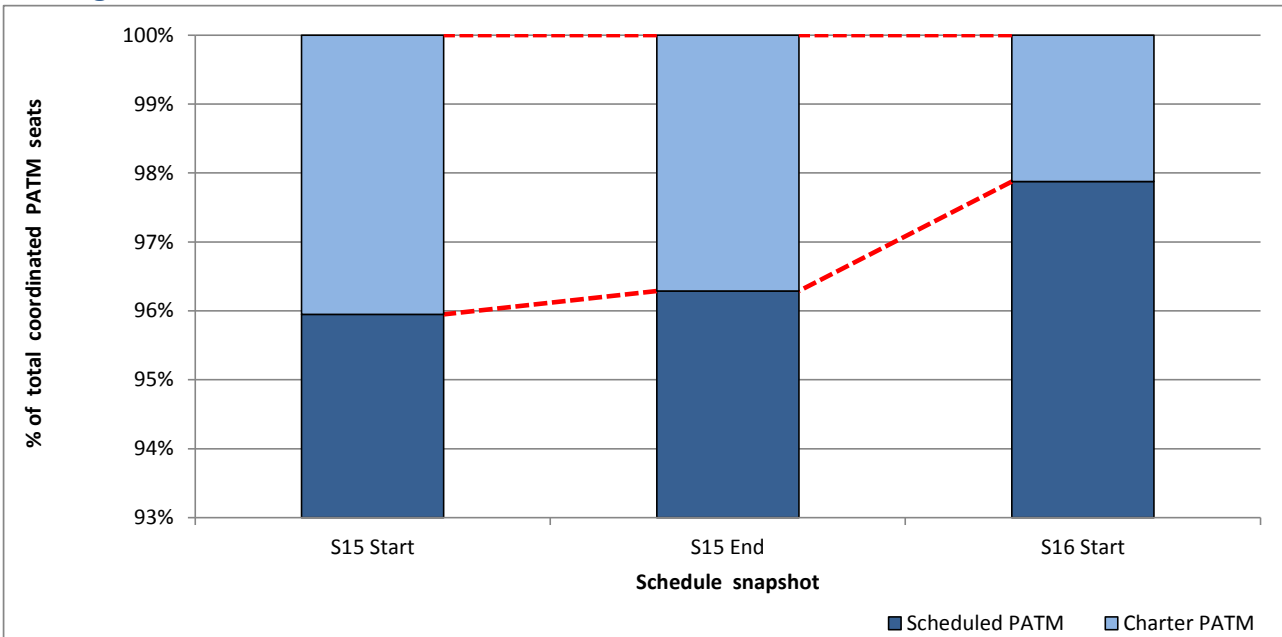
Full Season - PATM Seats Analysis



Total Passenger ATM seats: Scheduled vs. Charter



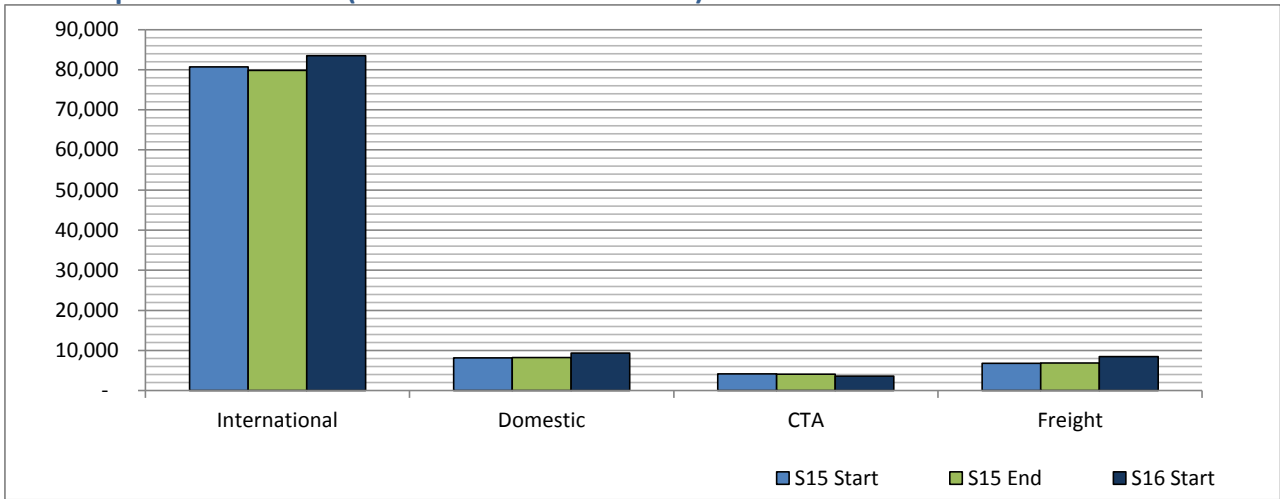
Passenger ATM seats: Scheduled vs. Charter



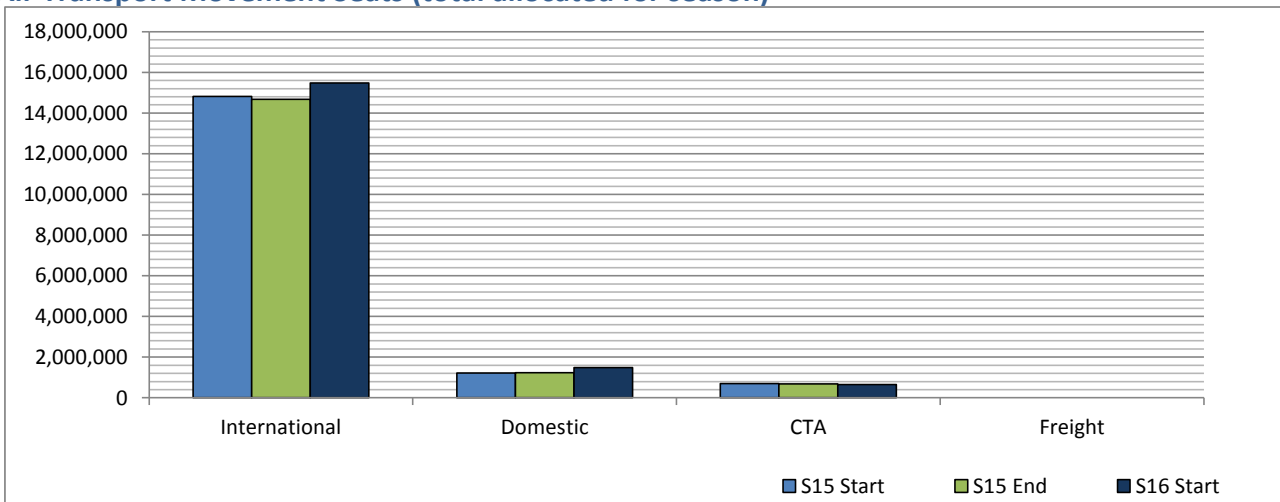
Full Season - Terminal Analysis



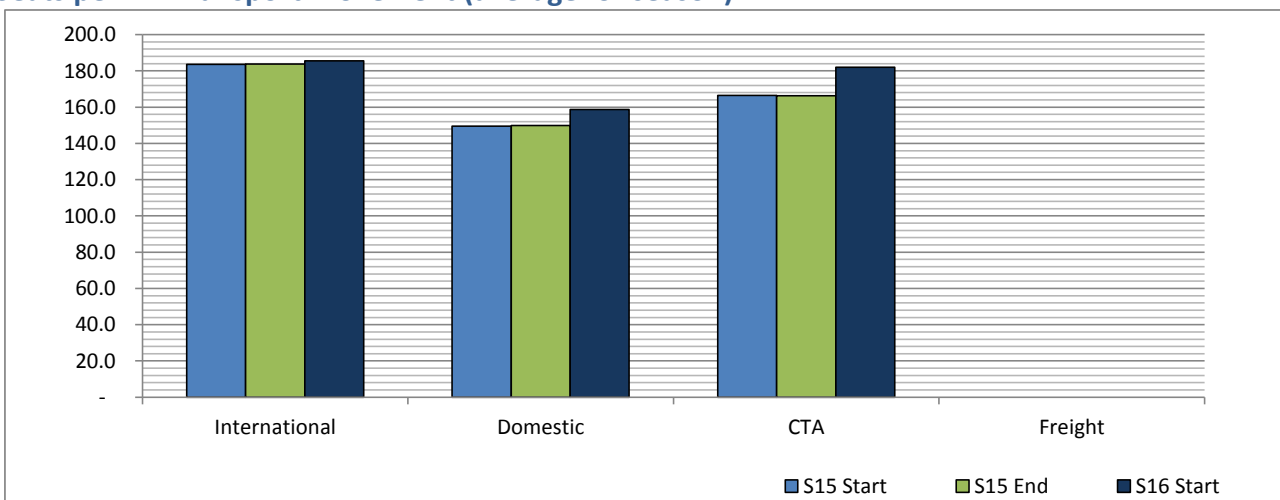
Air Transport Movements (total allocated for season)



Air Transport Movement Seats (total allocated for season)



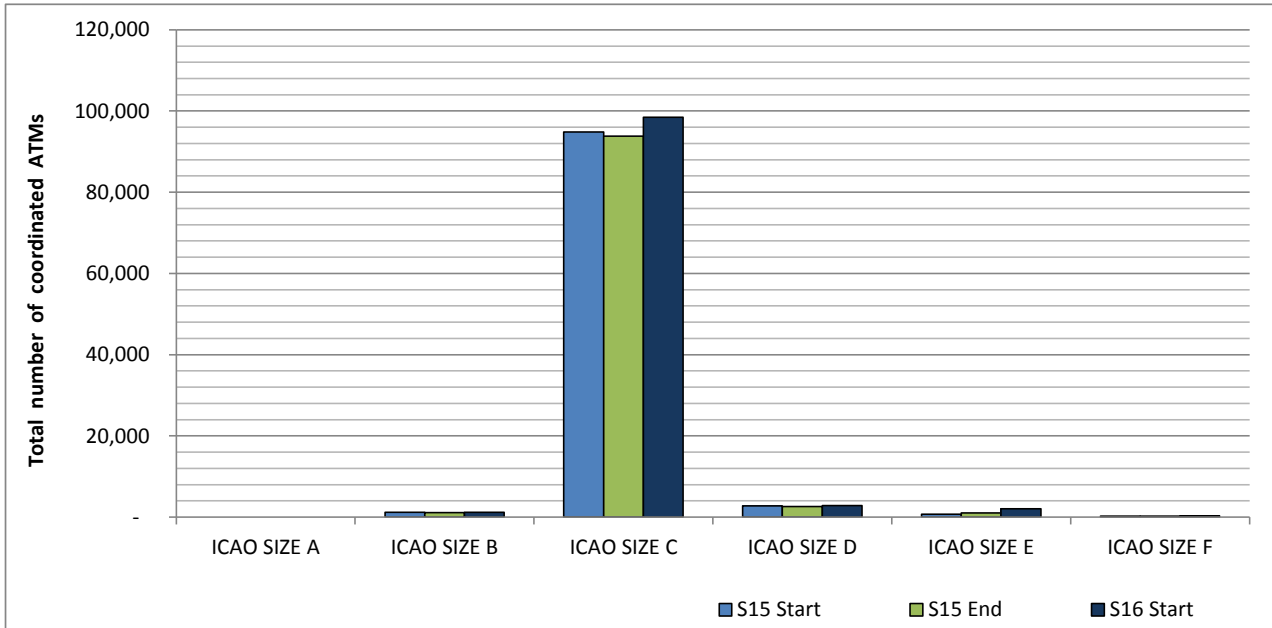
Seats per Air Transport Movement (average for season)



Full Season - Aircraft Size Analysis

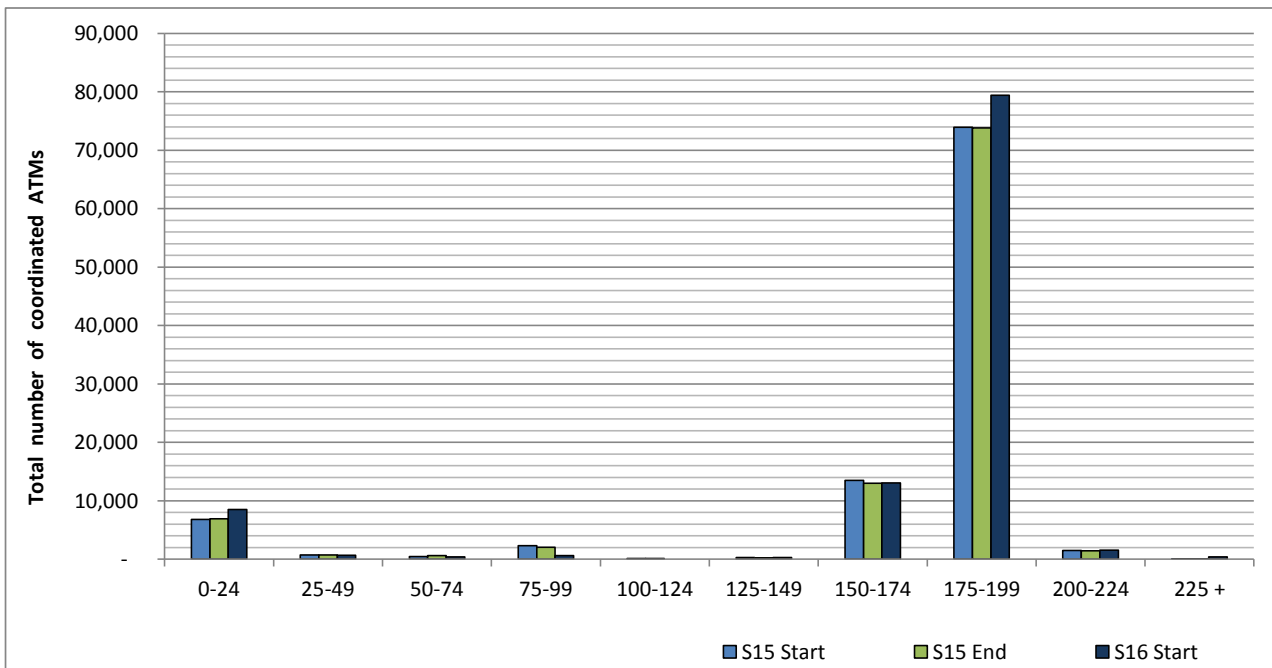


ICAO size designation



Note: See Glossary for definitions of ICAO SIZE groupings

Air Transport Movement seat distribution

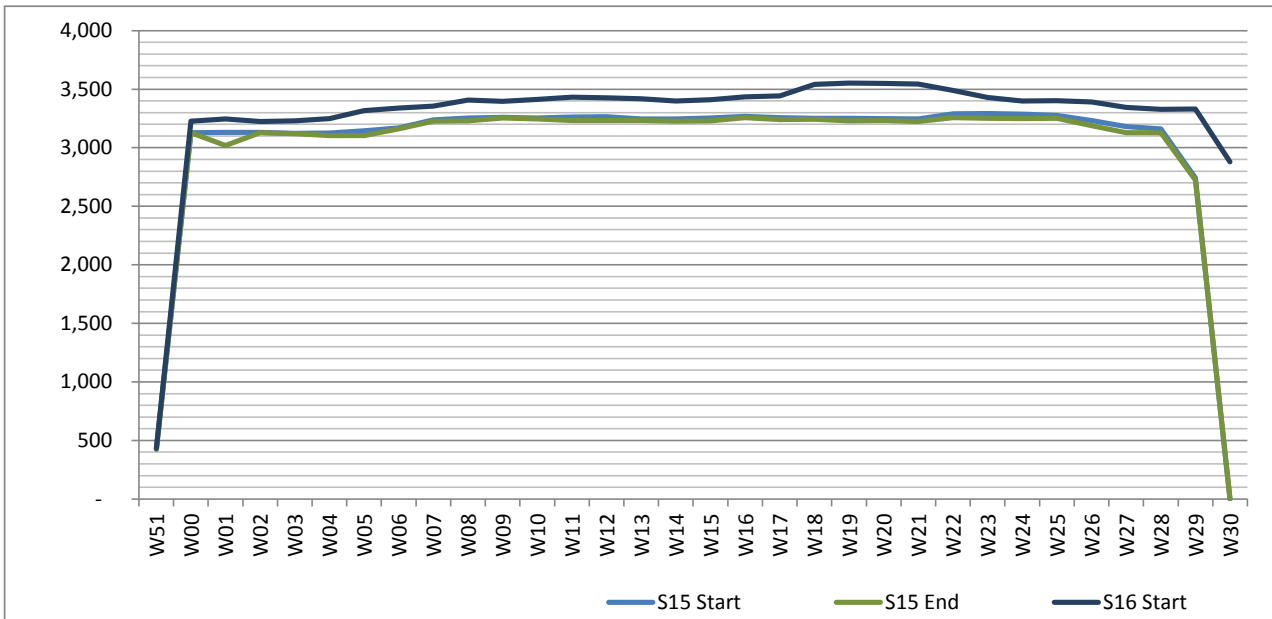


Note: FREIGHT-ONLY services with 0 seats are included in the first seat band '0-24'

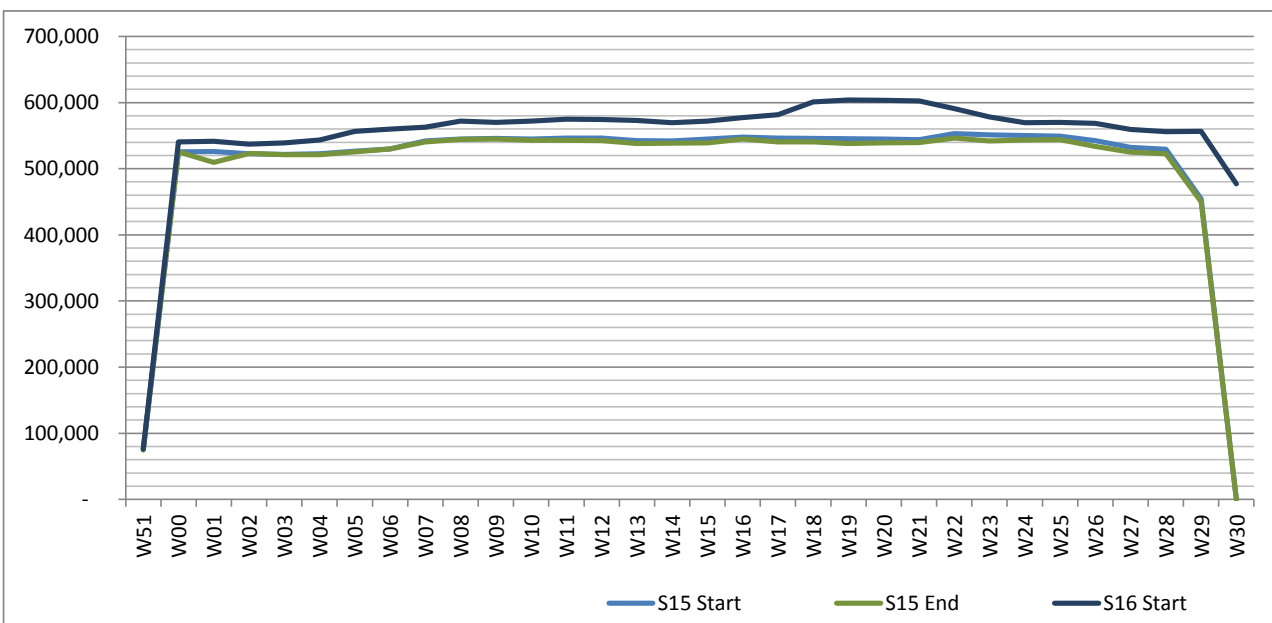
Full Season - Seasonality



Air Transport Movements by week of season



Air Transport Movement Seats by week of season



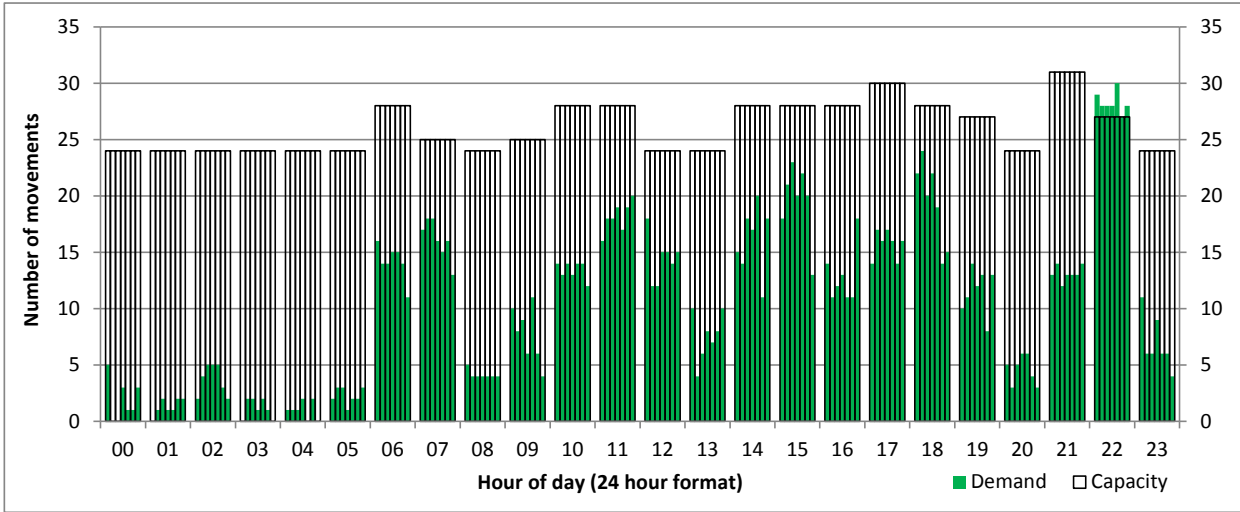
Peak Week - Hourly Runway Demand

Schedule: S16 Start



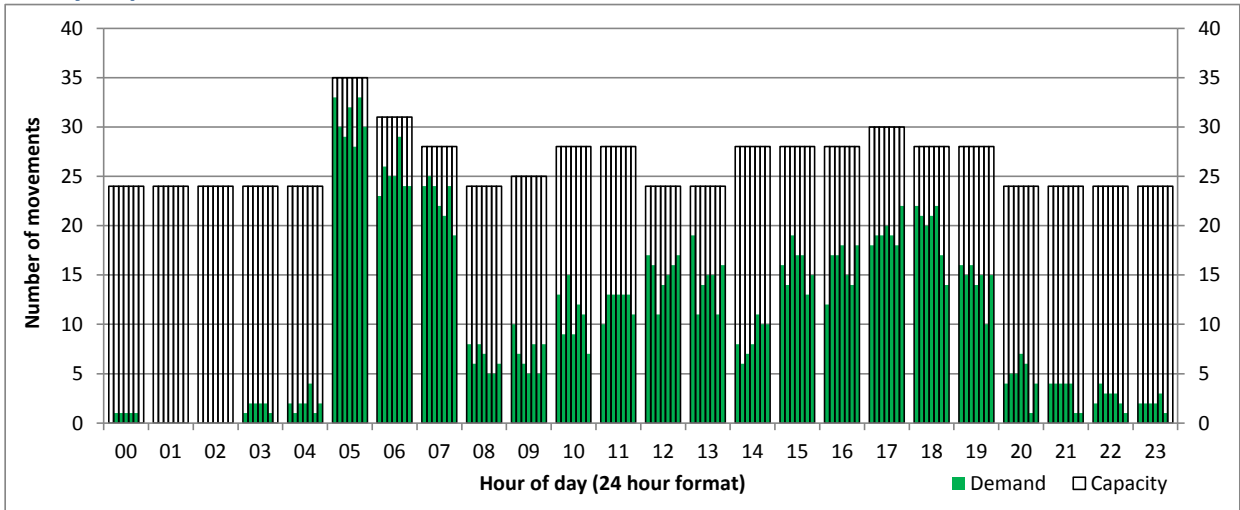
Hourly Arrival Demand

Time: UTC



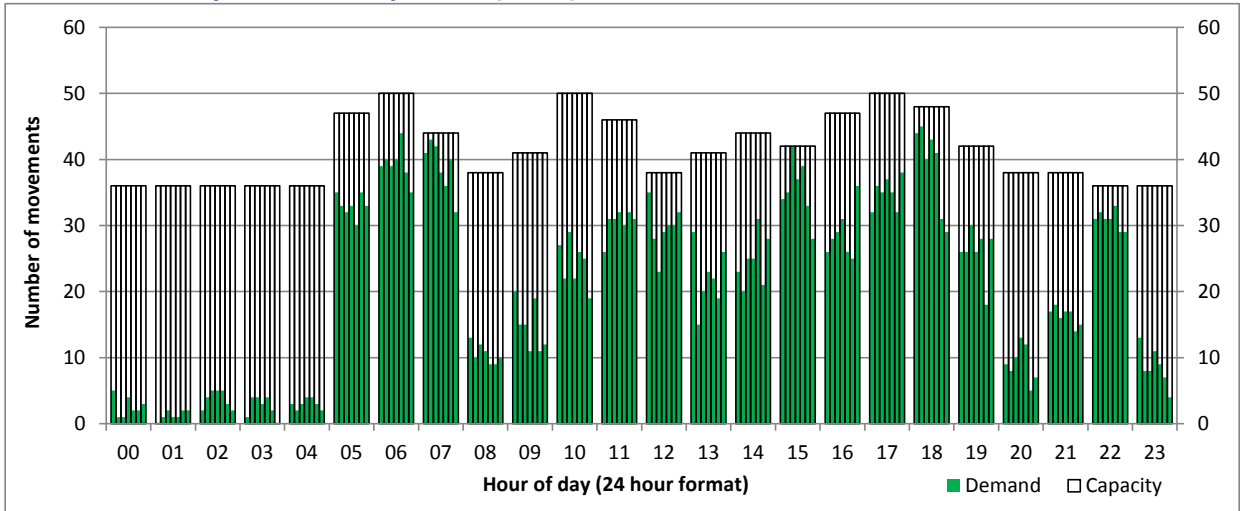
Hourly Departure Demand

Time: UTC



Combined Hourly Arrival & Departure (Total) Demand

Time: UTC



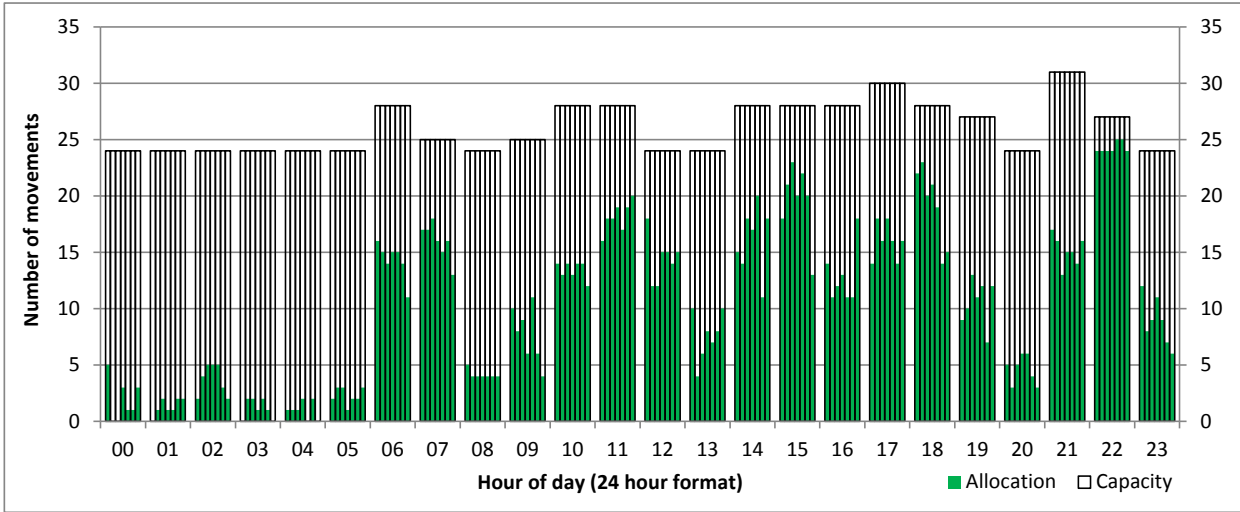
Peak Week - Hourly Runway Allocation

Schedule: S16 Start



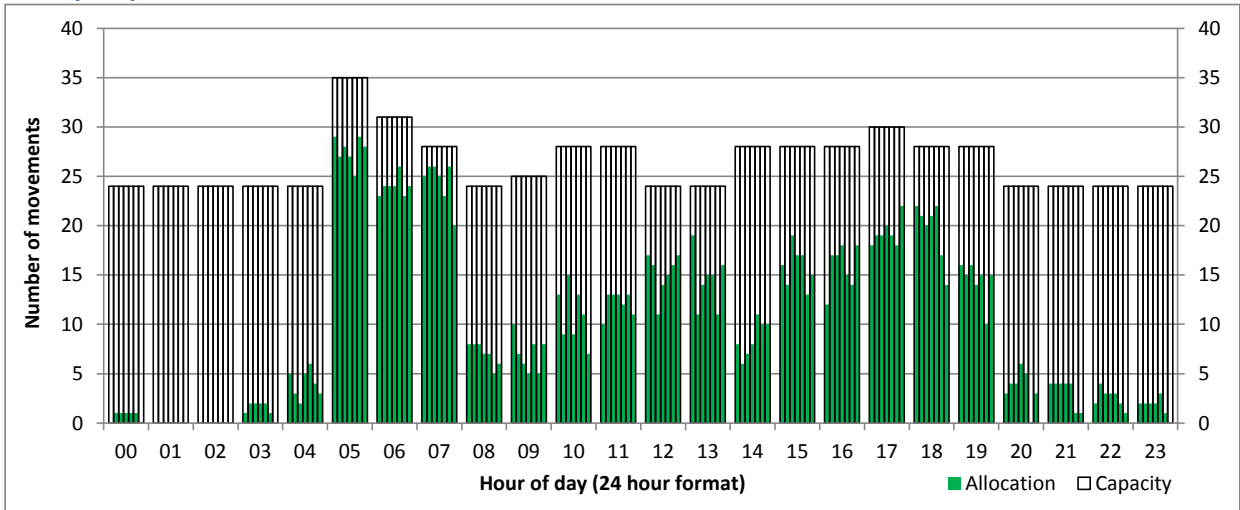
Hourly Arrival Allocation

Time: UTC



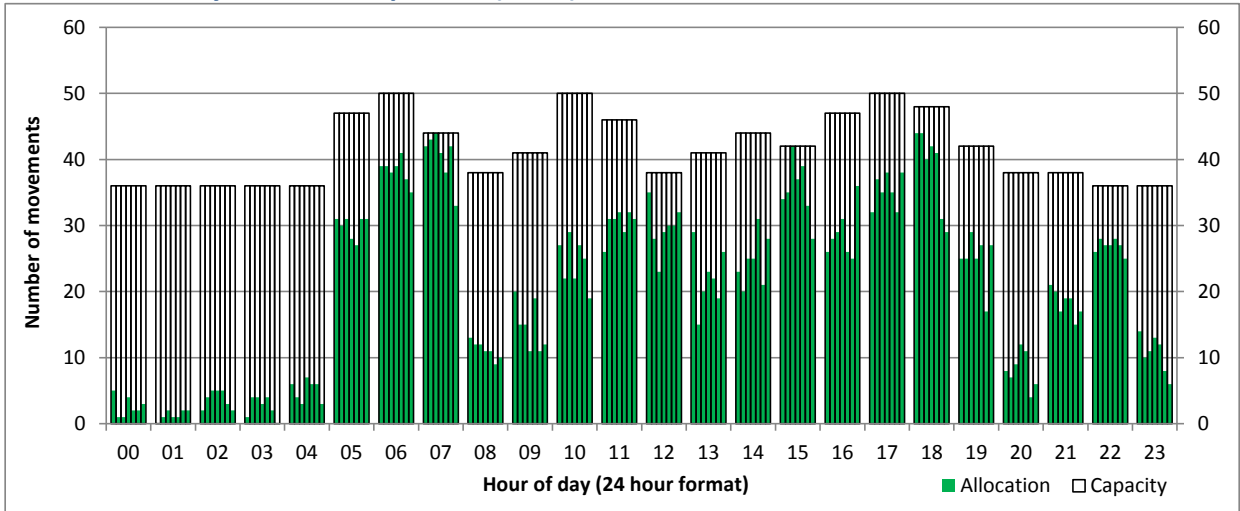
Hourly Departure Allocation

Time: UTC



Combined Hourly Arrival & Departure (Total) Allocation

Time: UTC



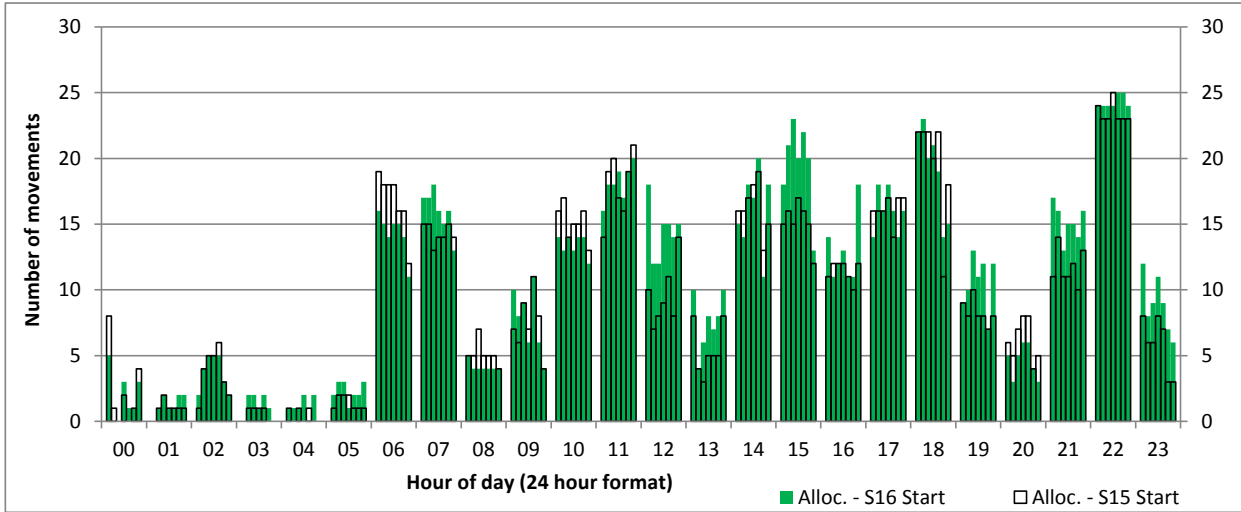
Peak Week - Runway Allocation Comparison

Comparison of S16 Start vs. S15 Start



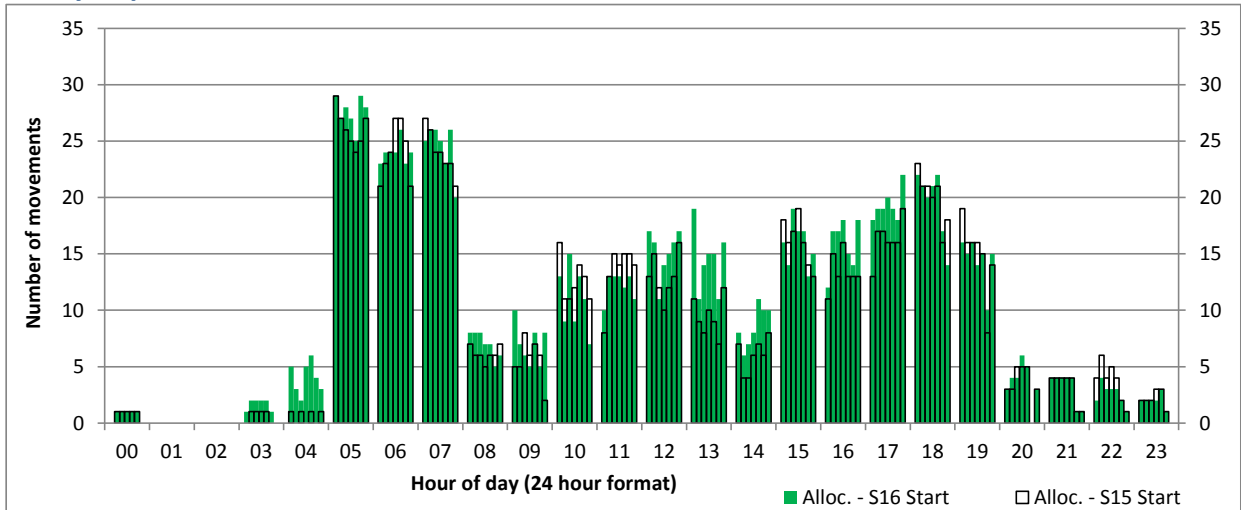
Hourly Arrival Allocation

Time: UTC



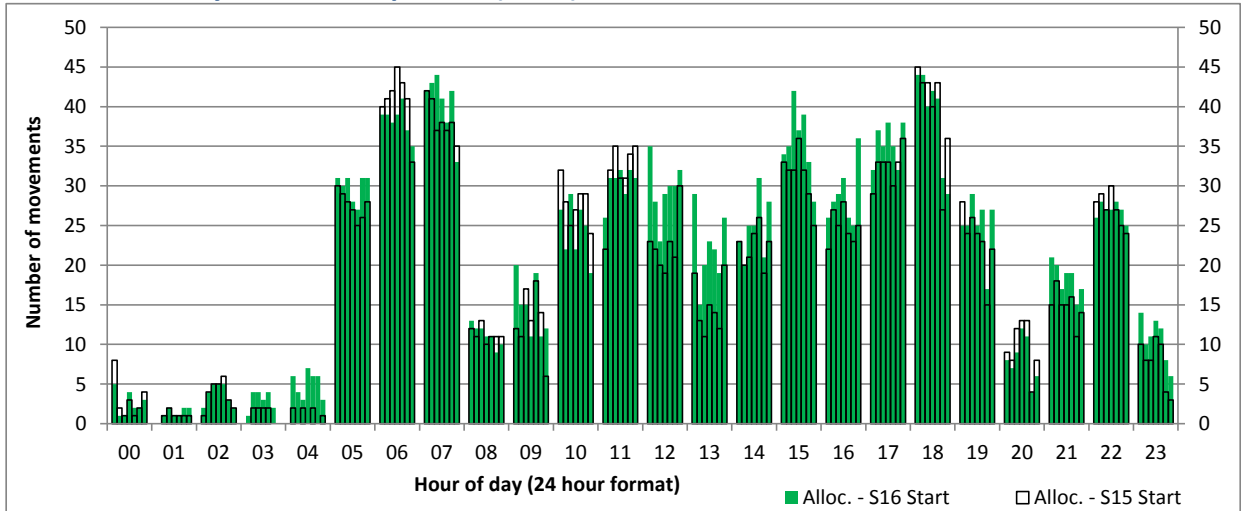
Hourly Departure Allocation

Time: UTC



Combined Hourly Arrival & Departure (Total) Allocation

Time: UTC



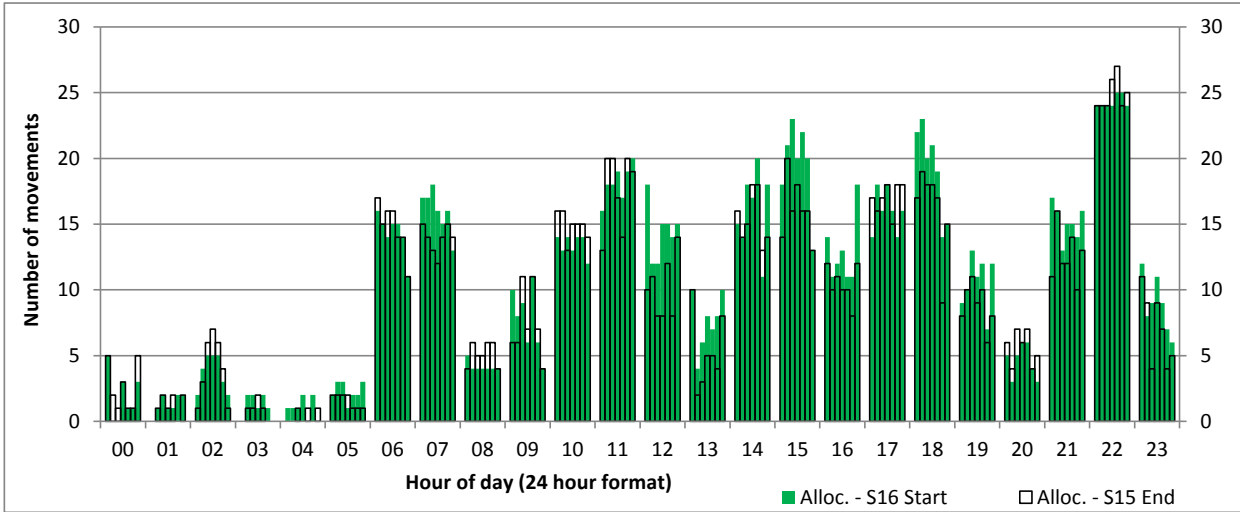
Peak Week - Runway Allocation Comparison

Comparison of S16 Start vs. S15 End



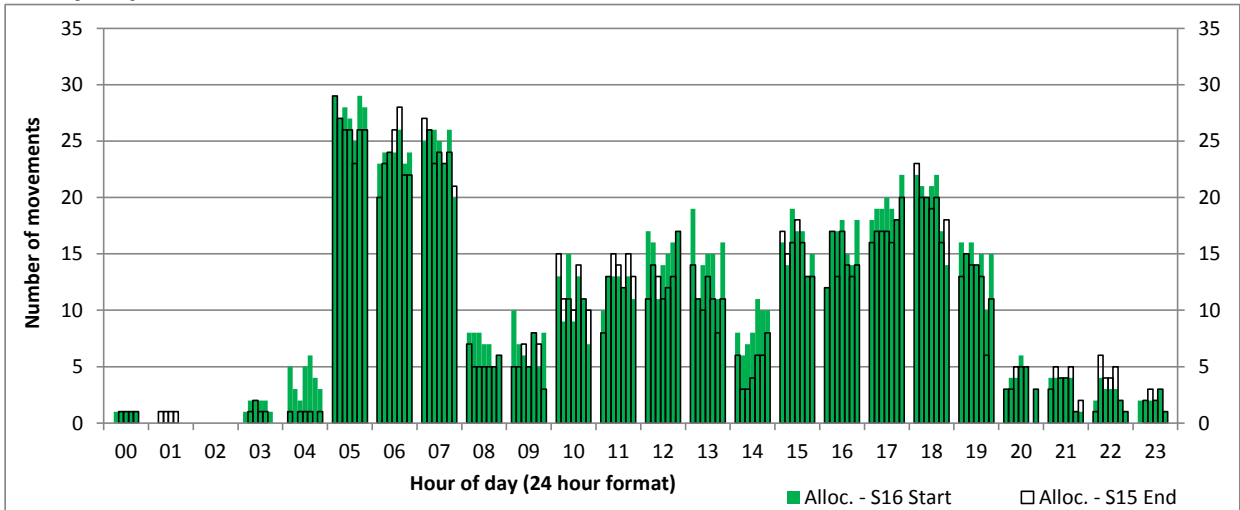
Hourly Arrival Allocation

Time: UTC



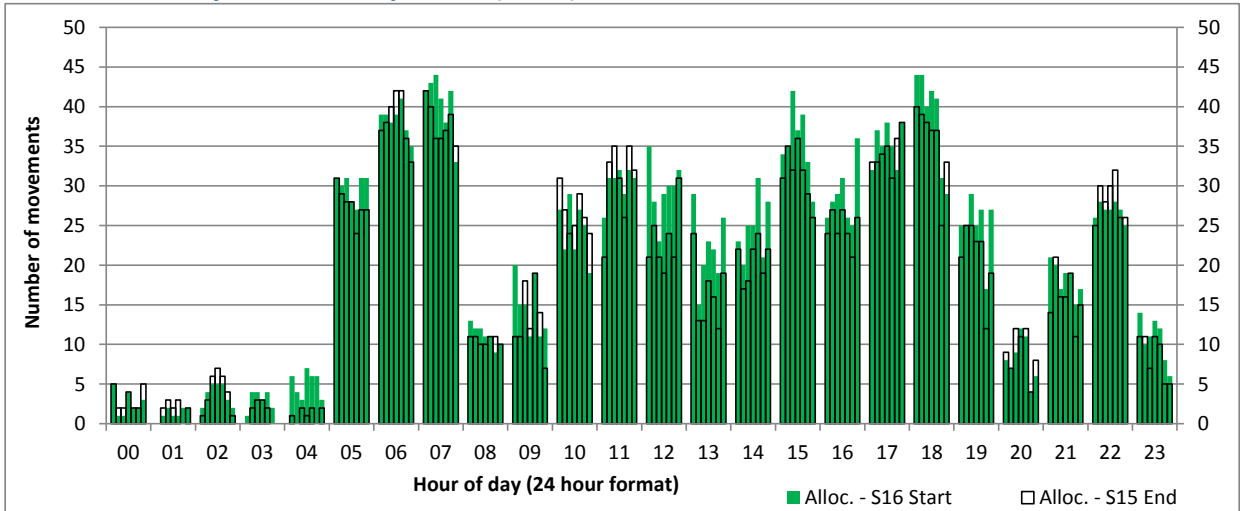
Hourly Departure Allocation

Time: UTC



Combined Hourly Arrival & Departure (Total) Allocation

Time: UTC



Peak Week - Passengers Histogram

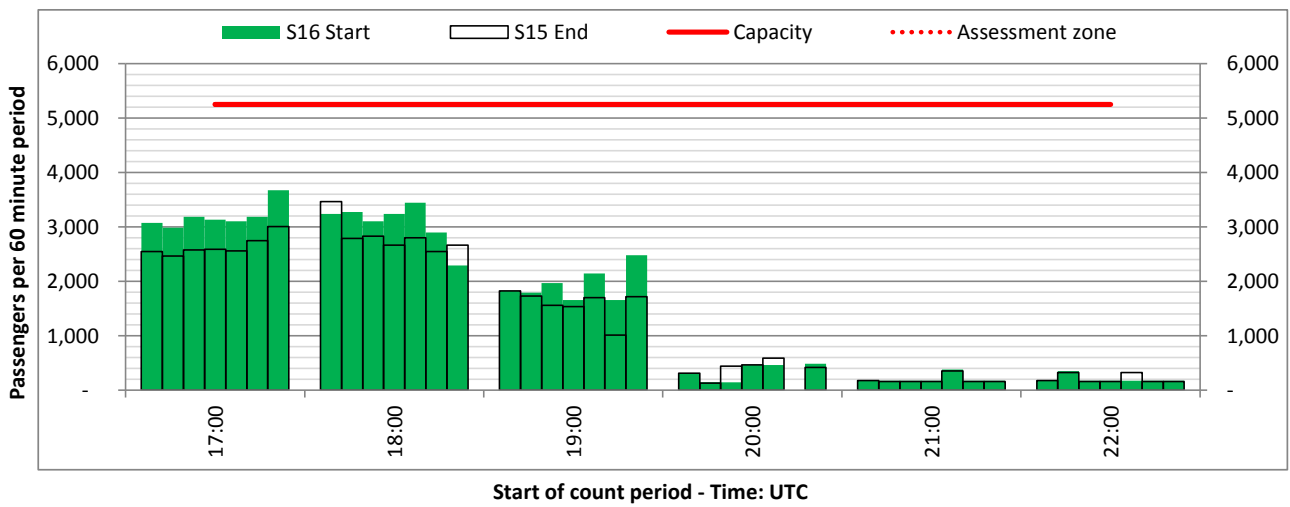
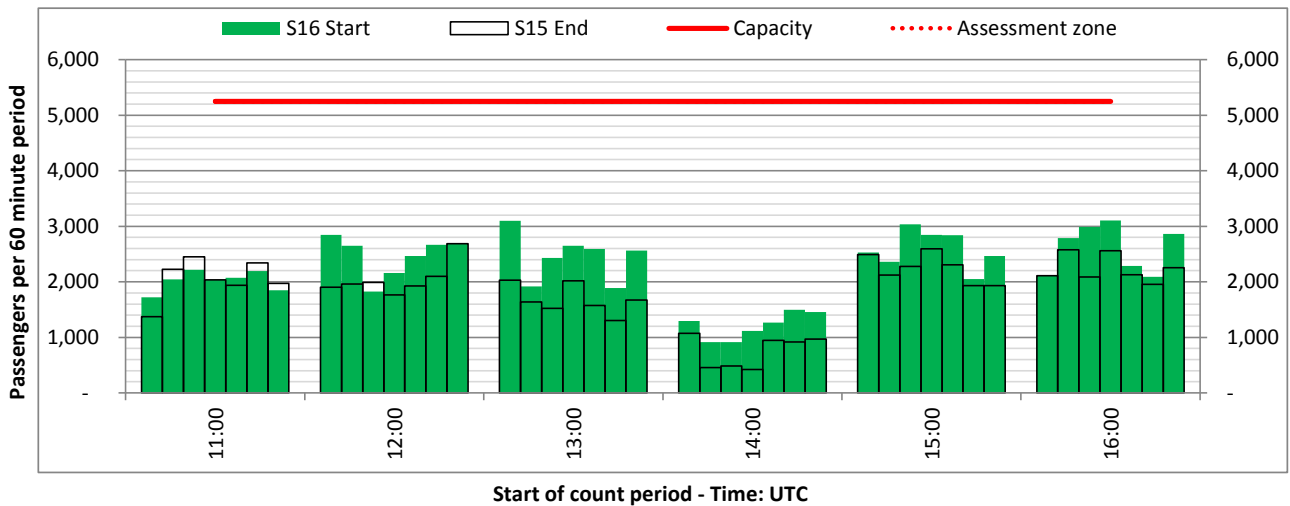
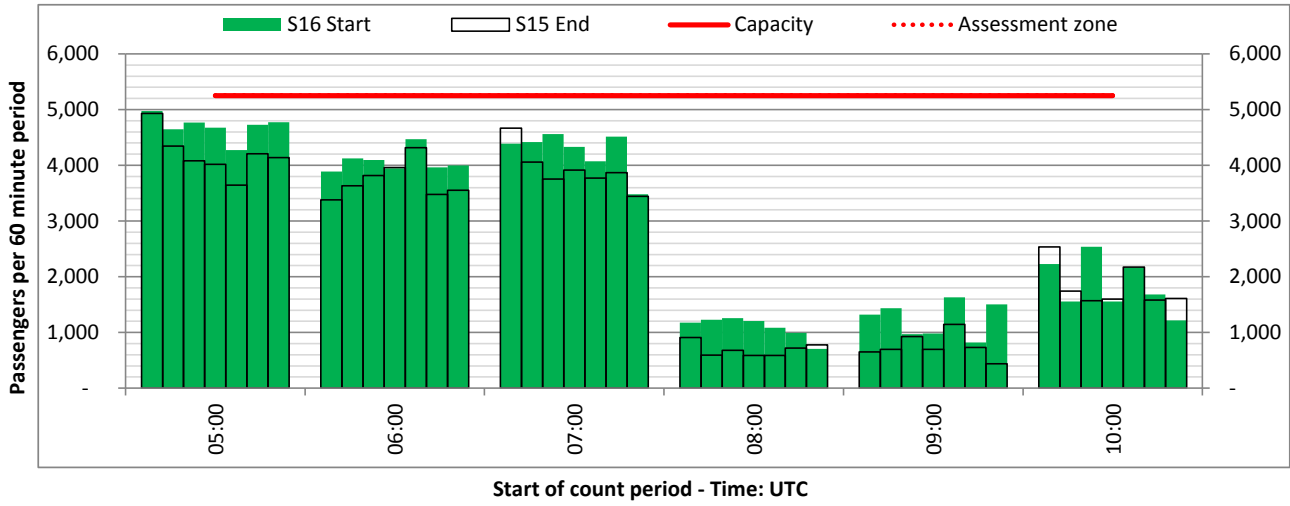
DEPARTURE - 60 minute count rolling every 60 mins (T60)



Terminals: All Terminals

Operators: All Operators

Days: 1234567



Peak Week - Passengers Histogram

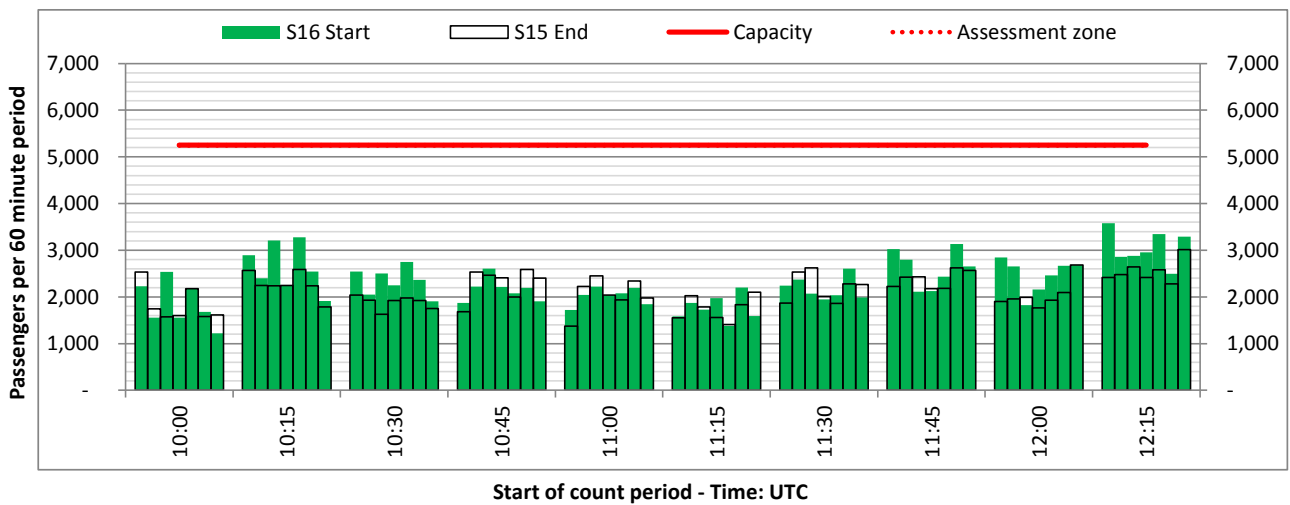
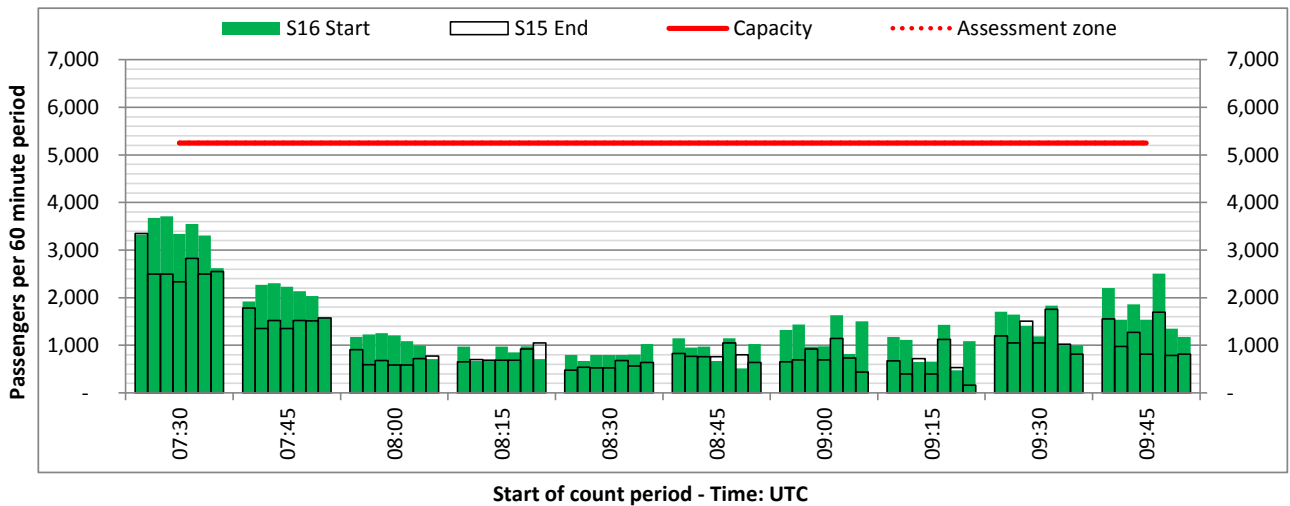
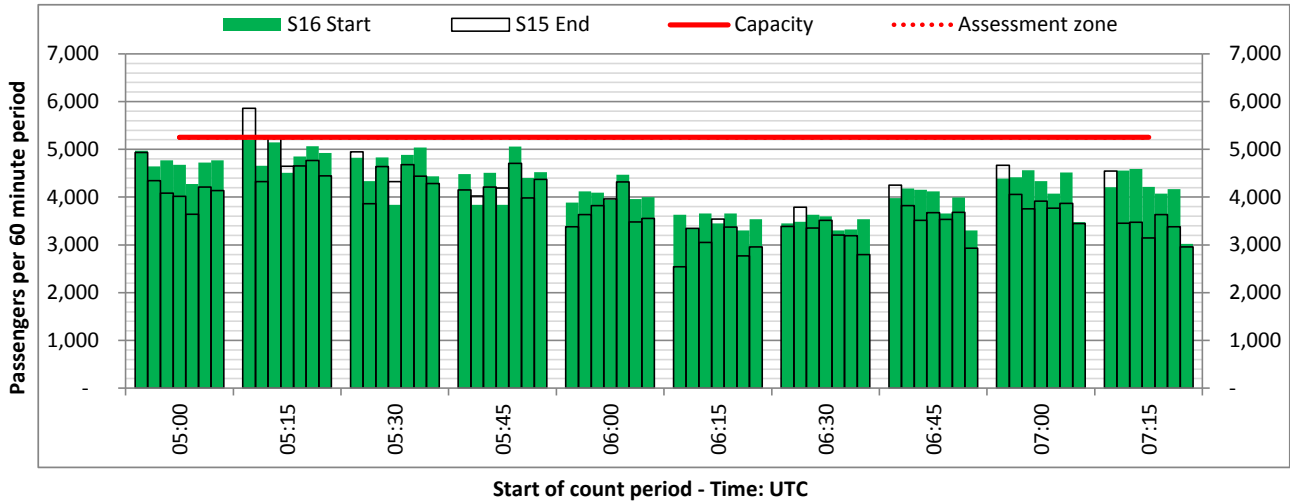
DEPARTURE - 60 minute count rolling every 15 mins (T60/15)



Terminals: All Terminals

Operators: All Operators

Days: 1234567



Peak Week - Passengers Histogram

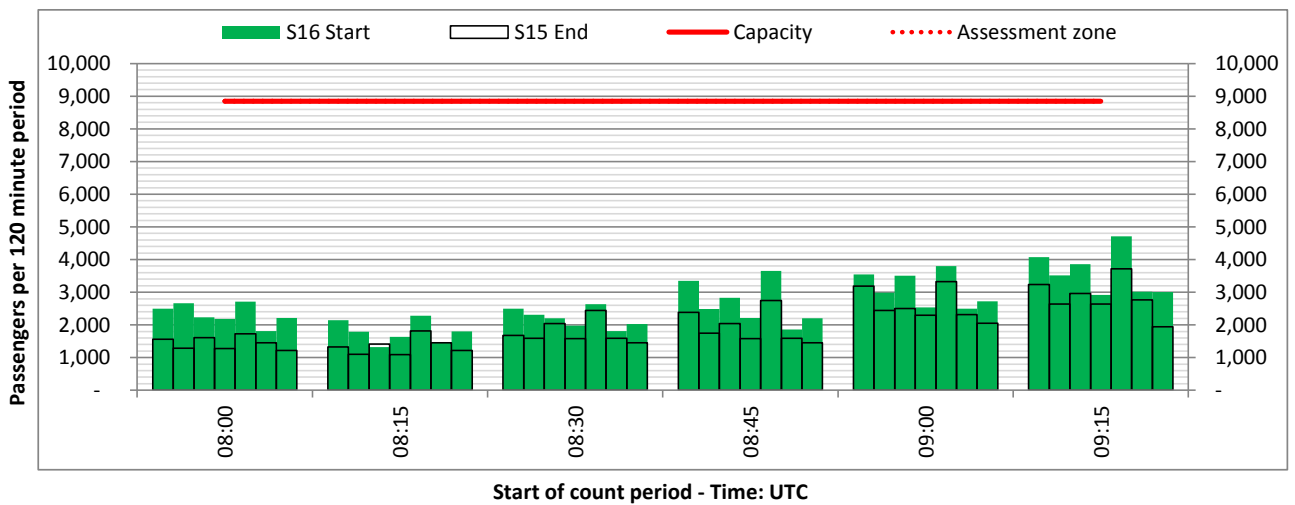
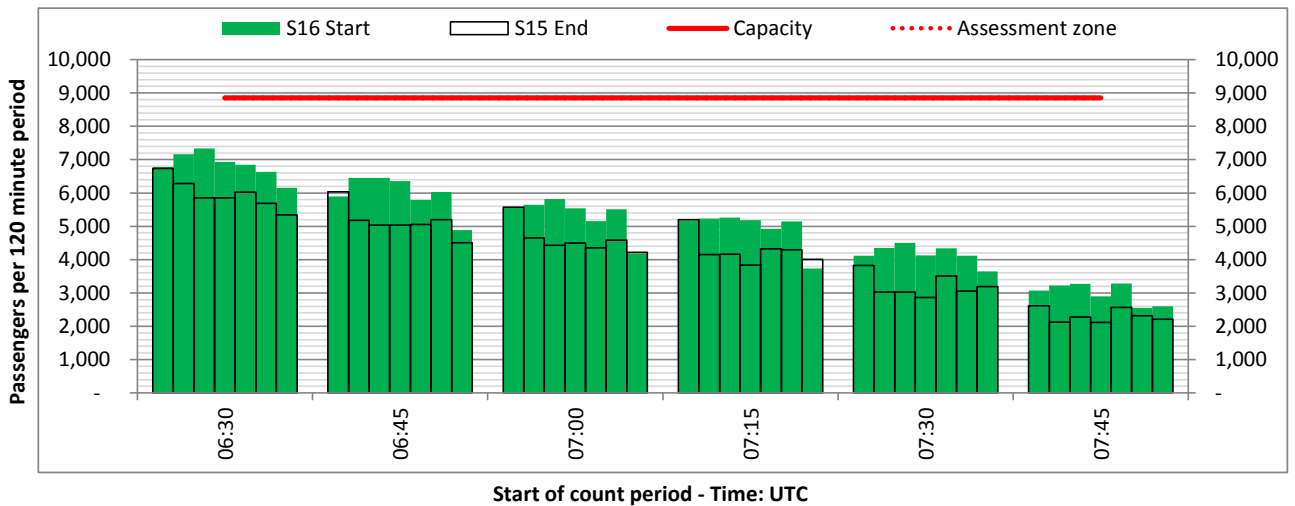
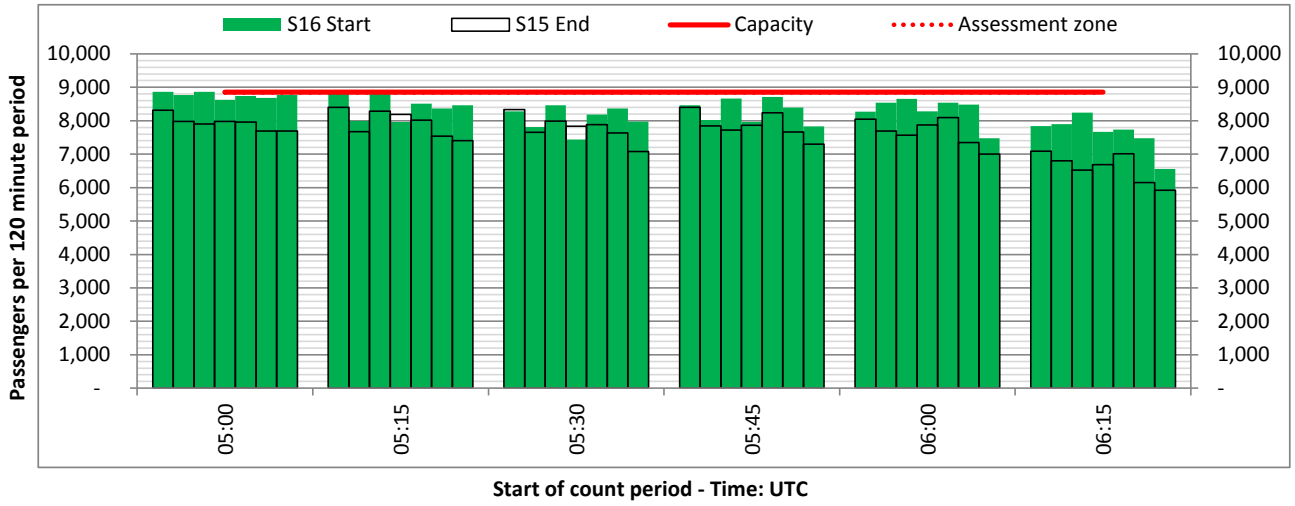
DEPARTURE - 120 minute count rolling every 15 mins (T120/15)



Terminals: All Terminals

Operators: All Operators

Days: 1234567



Peak Week - Passengers Histogram

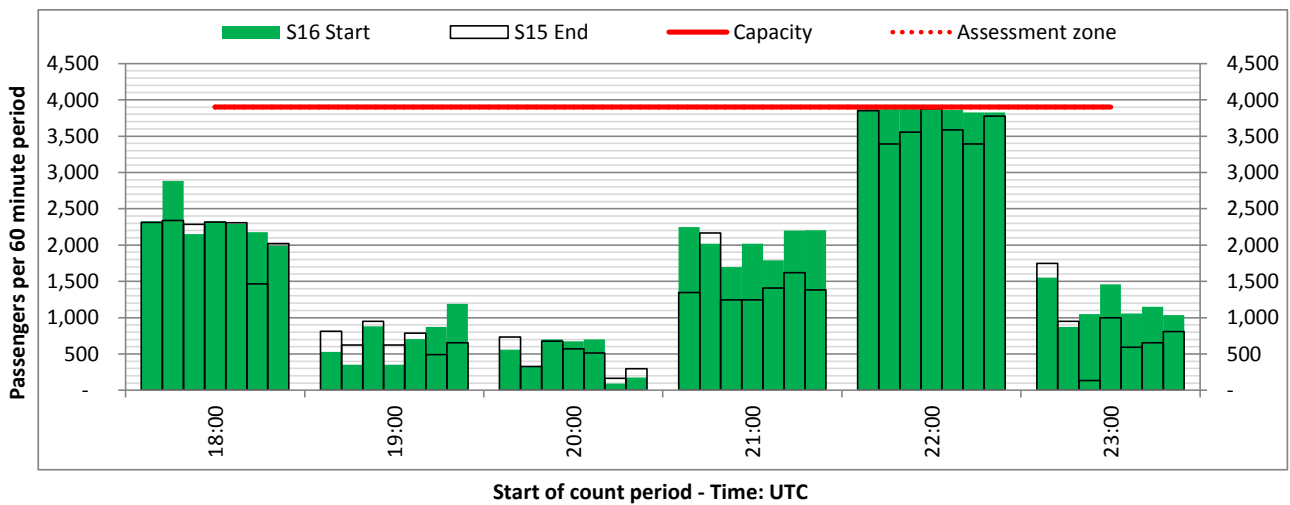
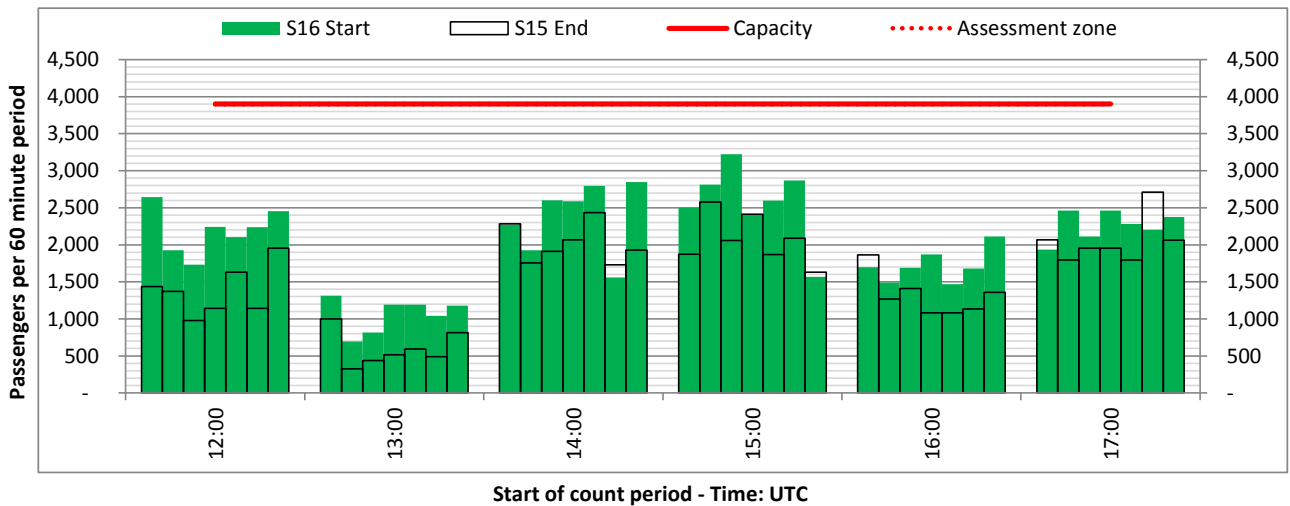
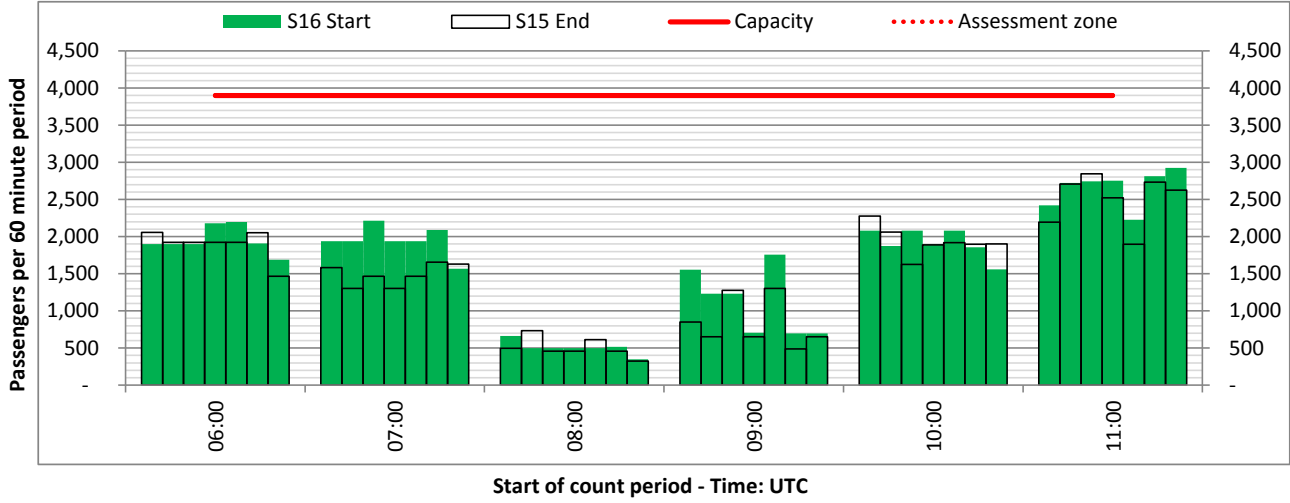
ARRIVAL - 60 minute count rolling every 60 mins (T60)



Terminals: 11

Operators: All Operators

Days: 1234567



Peak Week - Passengers Histogram

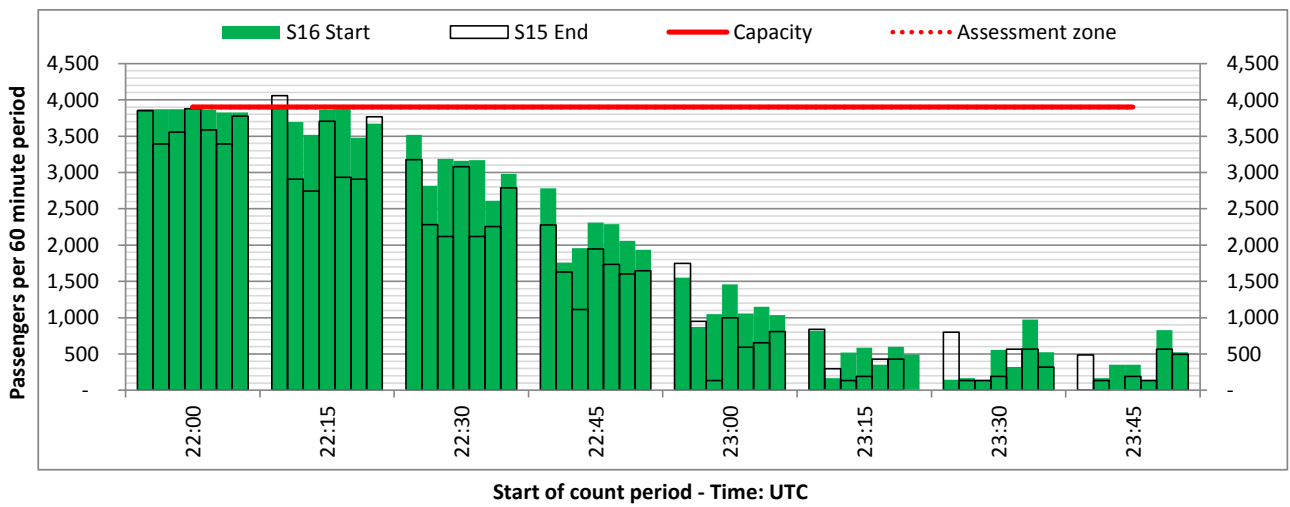
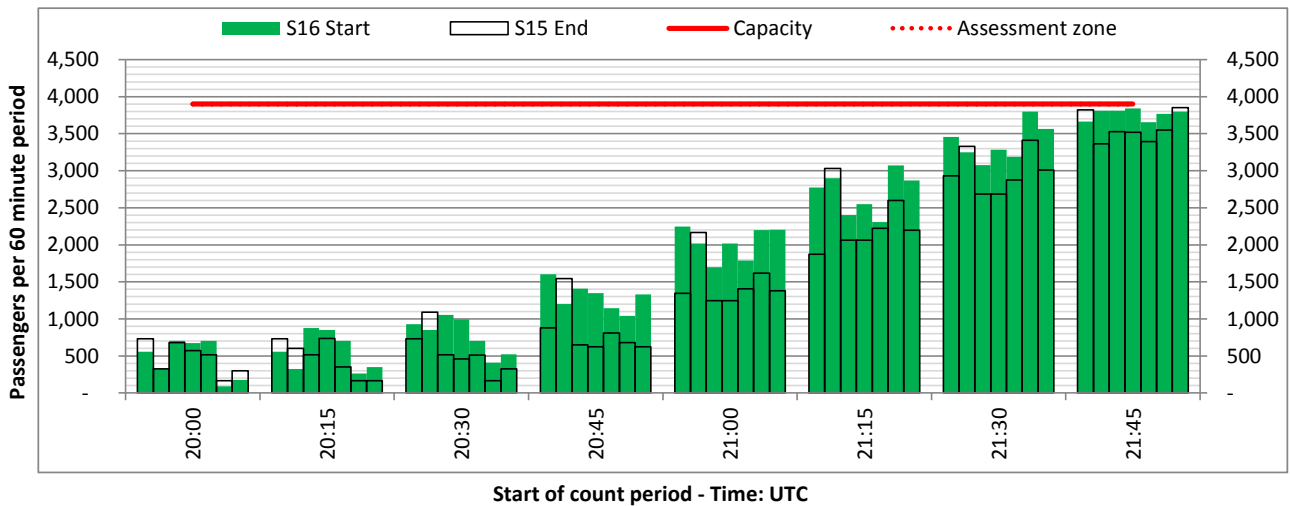
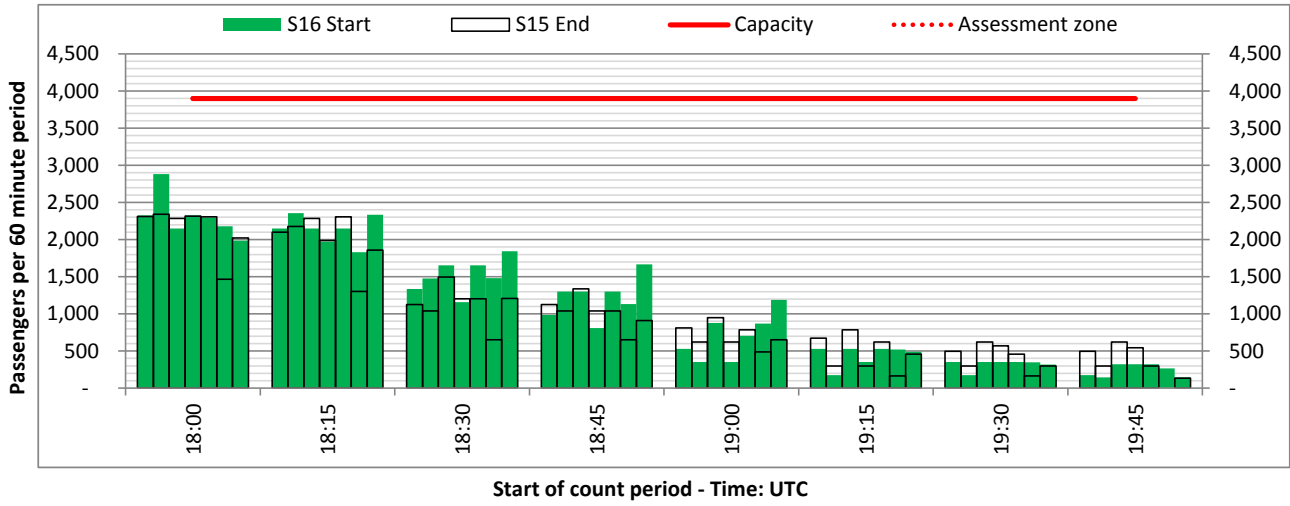
ARRIVAL - 60 minute count rolling every 15 mins (T60/15)



Terminals: 1I

Operators: All Operators

Days: 1234567



Peak Week - Passengers Histogram

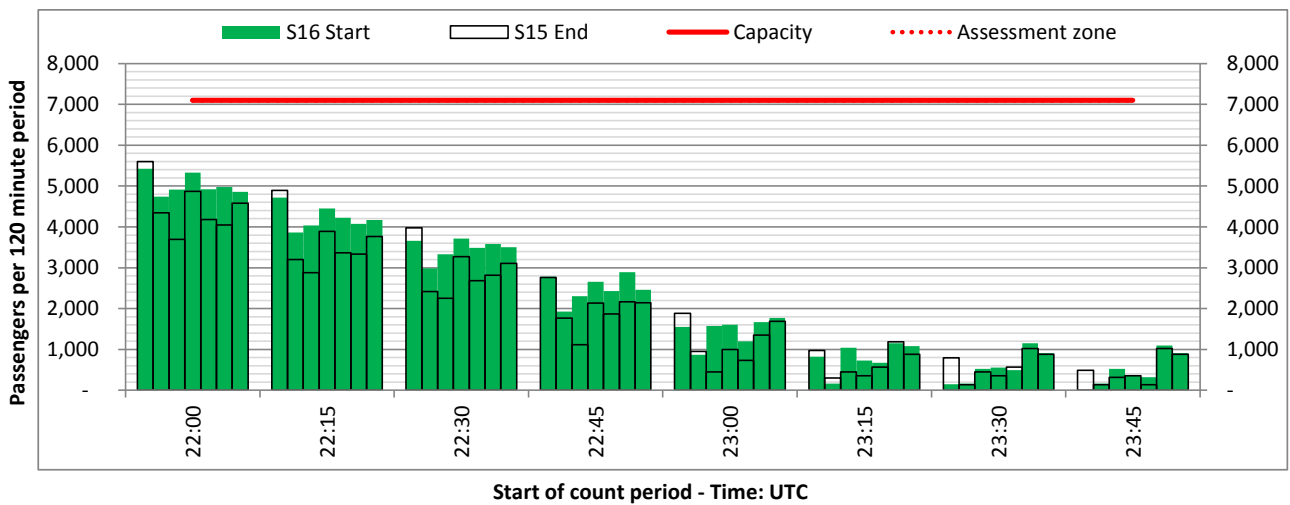
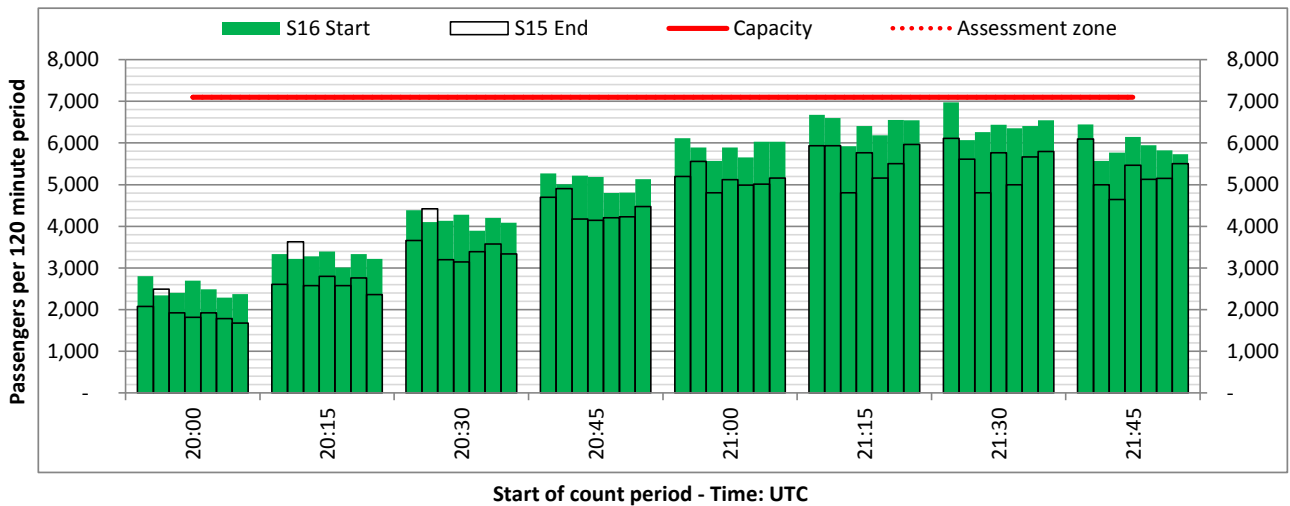
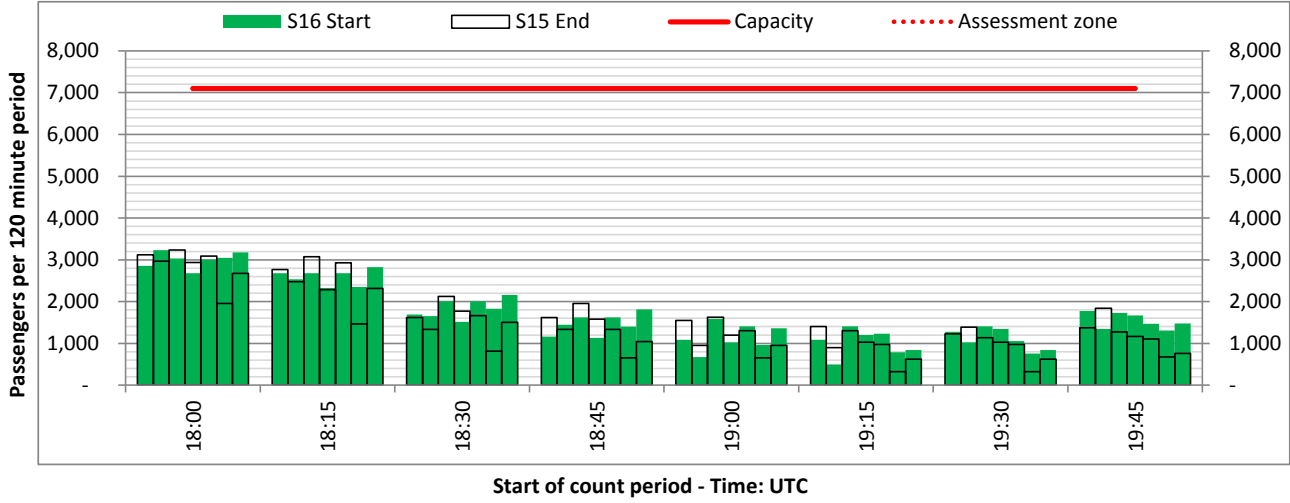
ARRIVAL - 120 minute count rolling every 15 mins (T120/15)



Terminals: 11

Operators: All Operators

Days: 1234567



Air Transport Movement (ATM)	Any aircraft movement which is either a scheduled or chartered passenger or cargo flight.
Common Travel Area (CTA)	Origin or Destination is in Republic of Ireland or the Channel Islands.
Demand	Unconstrained demand before any schedule adjustments have been made.
"Fill-in"	These are gaps in a historic series of slots which the carrier requests to "Fill-in" at Initial Submissions - Fill-ins will be recognisably part of the historic series and will have the same flight details to qualify as a "Fill-in".
Hist (SHL)	Snapshot of historic schedule rolled over from end of the previous equivalent season - as advised to airlines in the SHLs.
ICAO Size A	Aircraft with wingspan between 0.00m - 14.99m.
ICAO Size B	Aircraft with wingspan between 15.00m - 23.99m.
ICAO Size C	Aircraft with wingspan between 24.00m - 35.99m.
ICAO Size D	Aircraft with wingspan between 36.00m - 51.99m.
ICAO Size E	Aircraft with wingspan between 52.00m - 64.99m.
ICAO Size F	Aircraft with wingspan between 65.00m - 80.00m.
Init Coord	Snapshot of schedule immediately after Initial Coordination is completed - as advised to airlines in the SALs.
Passenger Air Transport Movement (PATM)	Any aircraft movement which is either a scheduled or chartered passenger flight.
Start	Snapshot of schedule shortly before the start of the scheduling season (exact date given below where used).
Time: Local	Times shown are in LOCAL time for the airport/scheduling season.
Time: UTC	Times shown are in Universal Time Constant (UTC).

Data snapshot descriptions

S15 Start	S15 schedule as cleared on Fri 11-Mar-16.
S15 End	S15 schedule as cleared on Mon 08-Sep-14.
S16 Start	S16 schedule as cleared on Tue 08-Mar-16.
Peak Week	Peak week for S15 is Mon 31-Aug-15 to Sun 06-Sep-15. Peak week for S16 is Mon 08-Aug-16 to Sun 14-Aug-16.

For ACL use

	Airport-Season-Branch-Resource	From date	To date	Time
Full Season Rep 1	STN-S15-SOS-Standard	Sun 29-Mar-2015	Sat 24-Oct-2015	UTC
Full Season Rep 2	STN-S15-Live-Standard	Sun 29-Mar-2015	Sat 24-Oct-2015	UTC
Full Season Rep 3	STN-S16-SOS Report-Standard	Sun 27-Mar-2016	Sat 29-Oct-2016	UTC
	Airport-Season-Branch-Resource	From date	To date	Time
Peak Week Rep 1	STN-S15-SOS-Standard	Mon 31-Aug-2015	Sun 06-Sep-2015	UTC
Peak Week Rep 2	STN-S15-Live-Standard	Mon 31-Aug-2015	Sun 06-Sep-2015	UTC
Peak Week Rep 3	STN-S16-SOS Report-Standard	Mon 08-Aug-2016	Sun 14-Aug-2016	UTC